



# ICP DAS PDS-220Fx Series Serial-to-Fiber Device Server User Guide

[Home](#) » [ICP DAS](#) » ICP DAS PDS-220Fx Series Serial-to-Fiber Device Server User Guide 

## Contents

- [1 ICP DAS PDS-220Fx Series Serial-to-Fiber Device Server](#)
- [2 What's in the shipping package?](#)
- [3 Preparations for devices](#)
- [4 Connecting the Power and Host PC](#)
- [5 Installing VxComm Utility on your PC](#)
- [6 Configuring Ethernet settings](#)
- [7 Configuring virtual COM ports](#)
- [8 Testing your PDS-220Fx](#)
- [9 Additional Information](#)
- [10 Documents / Resources](#)
  - [10.1 References](#)
- [11 Related Posts](#)



**ICP DAS PDS-220Fx Series Serial-to-Fiber Device Server**



## Product Information: PDS-220Fx Series

The PDS-220Fx Series is a product line of industrial data acquisition devices manufactured by ICP DAS. The series includes software, a quick start guide, and a CD containing firmware, demo programs, and documentation. The device is designed to capture and record data from various sensors and instruments for industrial automation purposes. It is equipped with Ethernet and COM ports for easy communication with other devices and systems.

## Product Usage Instructions

1. Connect the PDS-220Fx to your computer using an Ethernet cable.
2. Insert the accompanying CD into your computer and click "Search Servers".
3. Double-click on your PDS-220Fx device to configure the Ethernet settings.
4. Assign a COM port number and check the COM port configuration.
5. Click "Restart Driver" to start the driver.
6. Right-click on "Port1" and choose "Open COM Port".
7. Check the configuration and click "Open COM" to establish a connection.
8. Click "Send" to send a string to your PDS-220Fx device.

If you encounter any issues or have further questions about the product, you can visit the ICP DAS website or contact their technical support team via email.

## What's in the shipping package?

The package includes the following items:



**PDS-220Fx  
Series**



**Software  
CD**



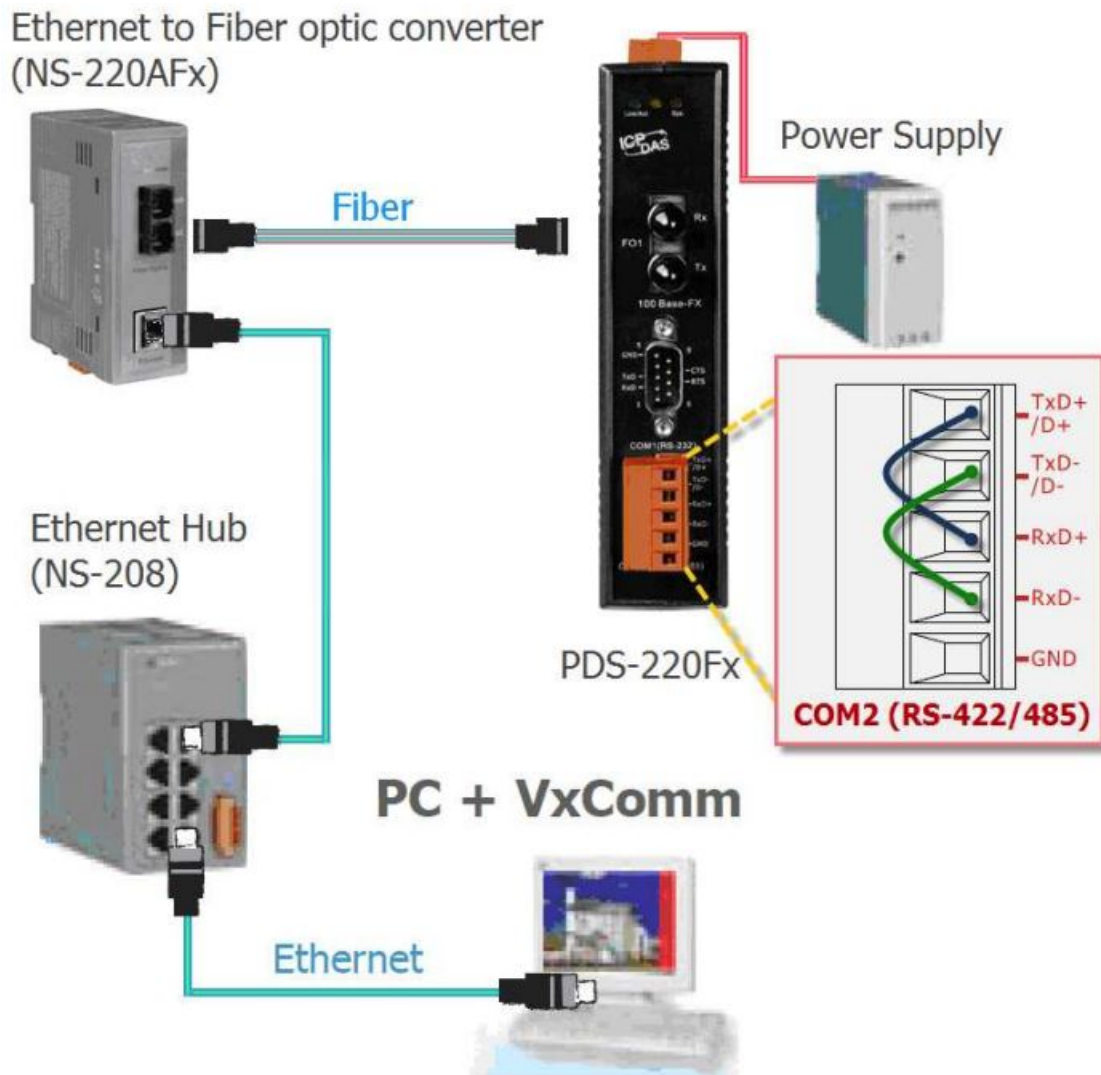
**Quick Start Guide  
(This Document)**

### **Preparations for devices**

1. Power Supply: +10 ~ +48 VDC (Ex, DP-665, optional)
2. Ethernet to Fiber Optic converter. (Ex, NS-200F series, optional)
3. Ethernet Hub. (Ex, NS-205, optional)
4. Make sure your PC has workable network settings.
5. Disable or well configure your Windows firewall and Anti-Virus firewall first, else the "Search Servers" on page 3 may not work. (Please contact with your system Administrator)

### **Connecting the Power and Host PC**

1. Connect both the PDS-220Fx via the Fiber Optic converter and your computer to the same sub network or the same Ethernet Switch.
2. Wire "RXD" and "TXD" of the COM2 on the PDS-220Fx as below (for test).

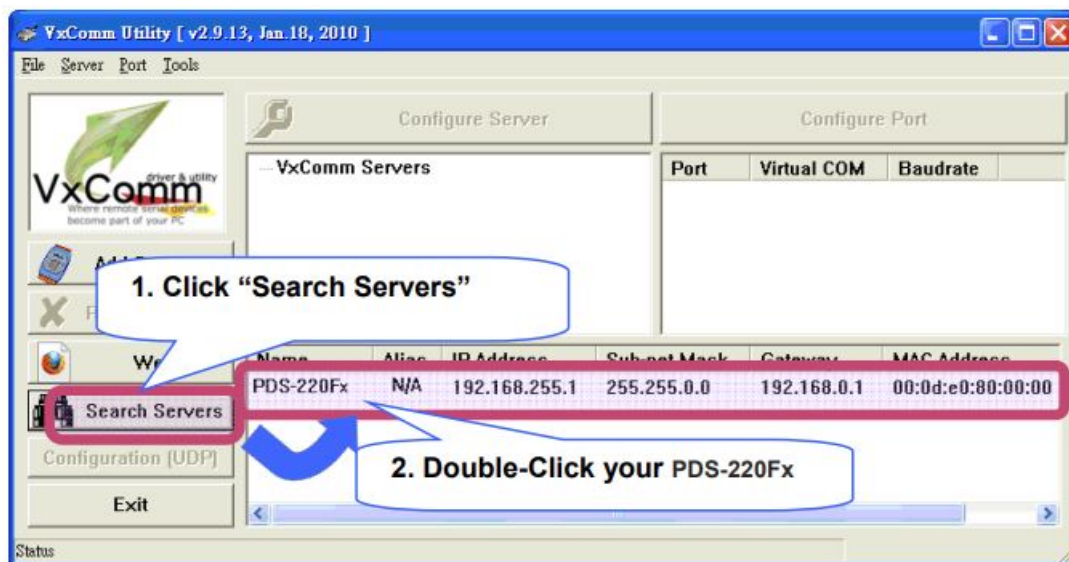


## Installing VxComm Utility on your PC

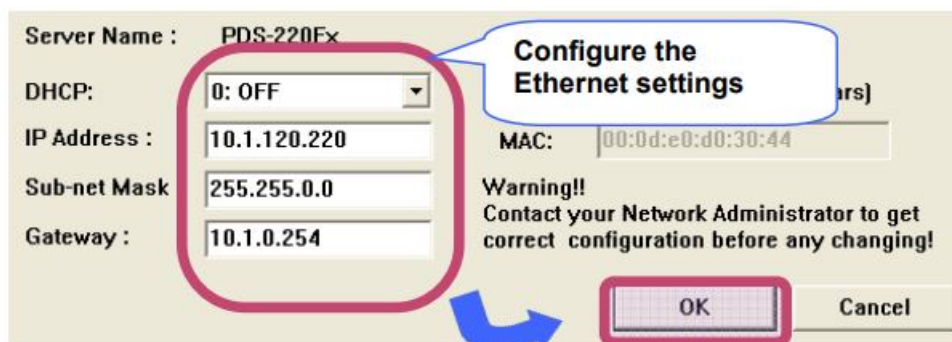
1. Locate the software from  
 CD:\Napdos\driver\VxComm driver\  
<http://www.icpdas.com/products/Software/VxComm/vxcomm.htm>
2. Install VxComm Utility.

## Configuring Ethernet settings

1. Run VxComm Utility and click "Search Servers" button to search your PDS-220Fx.
2. Double-Click the PDS-220Fx to configure the Ethernet Settings.

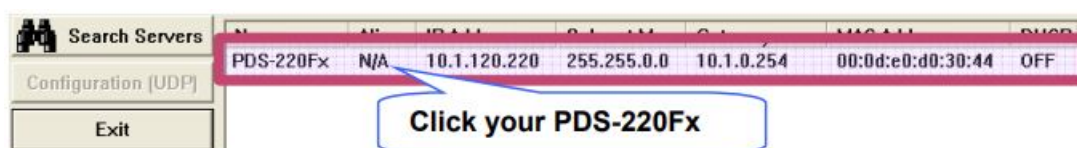


3. Contact your Network Administrator to get correct network configuration.
4. Modify the network settings and then click "OK". The PDS-220Fx will restart it-self immediately.

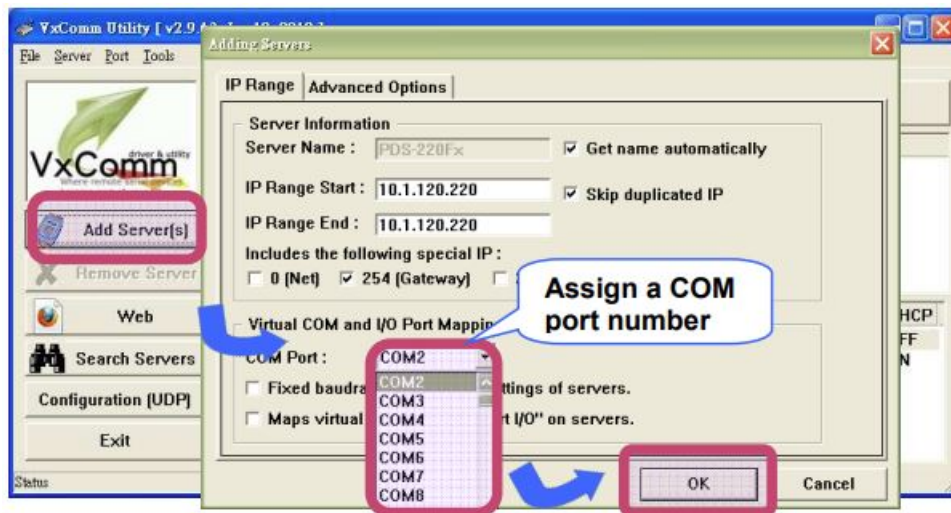


## Configuring virtual COM ports

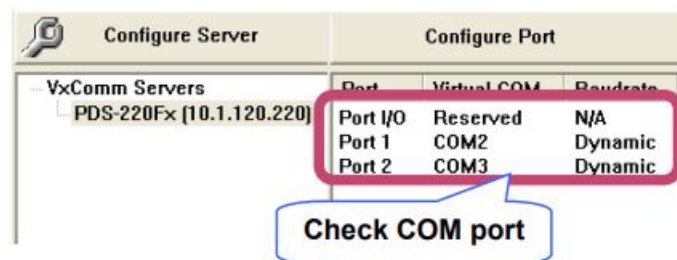
1. Again search out your PDS-220Fx to make sure the new IP/Mask/Gateway are set in, then click your PDS-220Fx to select it.



2. Click the button "Add Sever(s)", assign a COM port number and then click "OK".



3. Check the COM port numbers virtualized on PC.

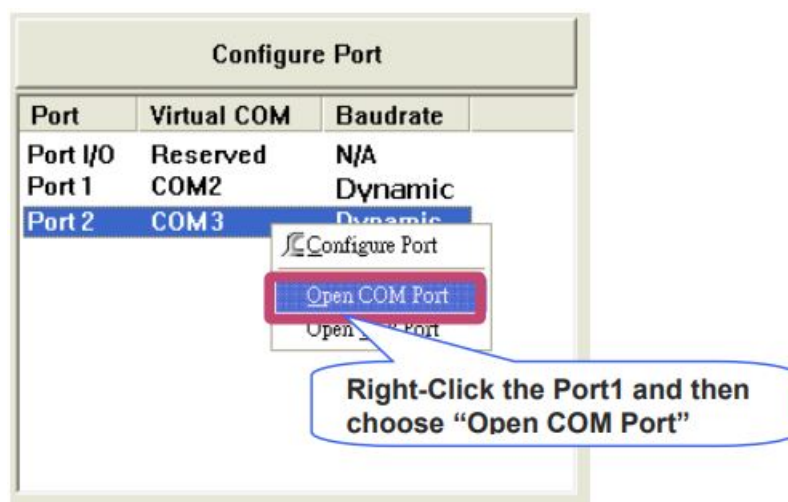


4. Click "Tools -> Restart Driver" and then click "Restart Driver" to start the driver.



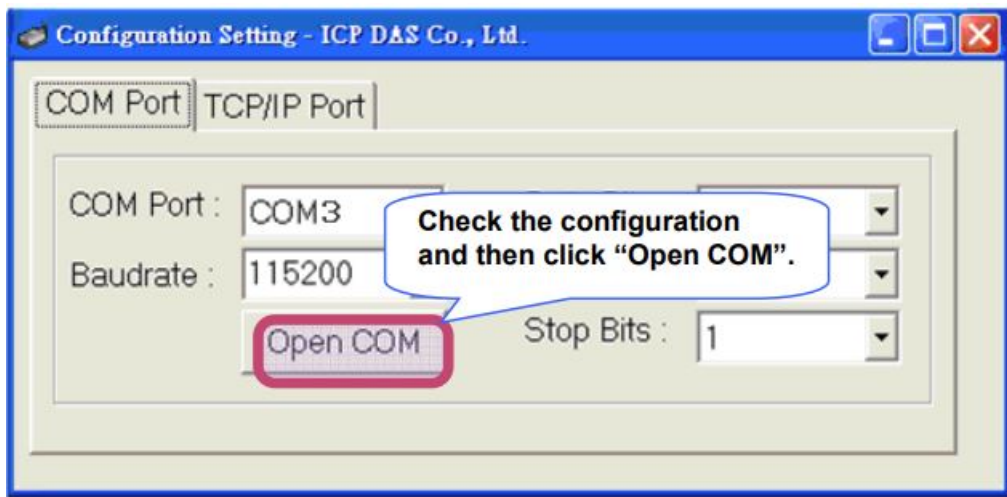
## Testing your PDS-220Fx

1. Right-Click the Port2 and then choose "Open COM Port".

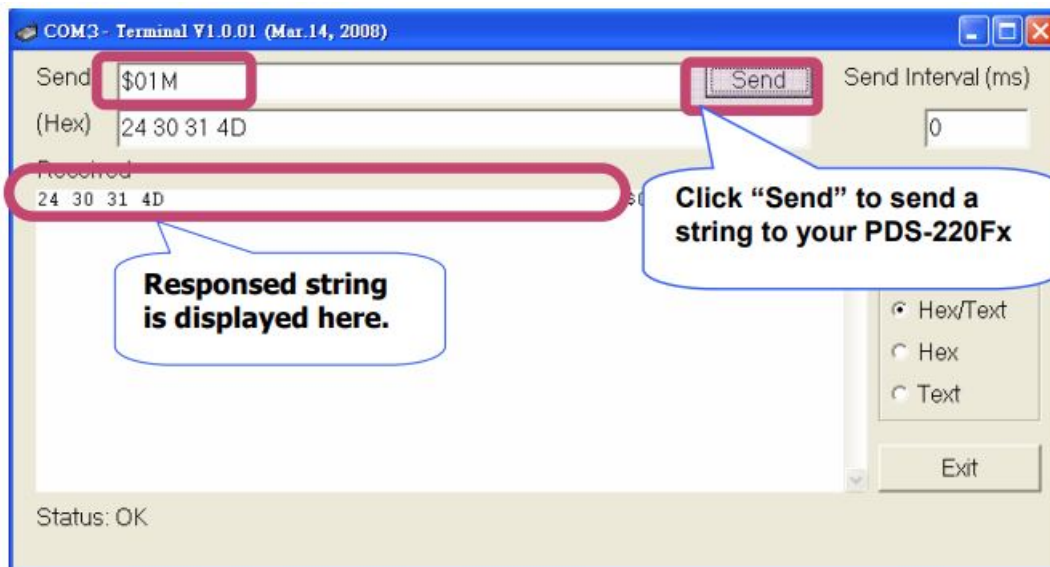


2. Check the COM Port's configuration and then click "Open COM".





3. Send a string and get a response that should be the same as sent.



## Additional Information

- **PDS-220Fx Series Document:**

CD:\Napdos\PDS\PDS-220Fx\document\

<http://ftp.icpdas.com.tw/pub/cd/8000cd/napdos/pds/pds-220fx/document/>

- **PDS-220Fx Series firmware**

CD:\ Napdos\PDS\PDS-220Fx\VxComm\Server(PDS)\

[http://ftp.icpdas.com.tw/pub/cd/8000cd/napdos/pds/pds-220fx/vxcomm/server\(pds\)](http://ftp.icpdas.com.tw/pub/cd/8000cd/napdos/pds/pds-220fx/vxcomm/server(pds))

- **More demo programs**

CD: \NAPDOS\PDS\PDS-220Fx\demo

<http://ftp.icpdas.com.tw/pub/cd/8000cd/napdos/pds/pds-220fx/demo>

## The PDS-220Fx Series Web Site

<http://www.icpdas.com/products/Industrial/pds/pds-220fx.htm>

## The ICP DAS Web Site

<http://www.icpdas.com>

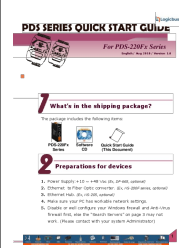
- Technical support
- Supplies and ordering information
- Information to enhance the product
- FAQ & Application story

Contact Us [Service@icpdas.com](mailto:Service@icpdas.com)

[ventas@logicbus.com](mailto:ventas@logicbus.com)

+52 (33)-3823-4349  
[lienda.logicbus.com.mx](mailto:lienda.logicbus.com.mx)

Documents / Resources

	<p><a href="#">ICP DAS PDS-220Fx Series Serial-to-Fiber Device Server</a> [pdf] User Guide</p> <p>PDS-220Fx Series Serial-to-Fiber Device Server, PDS-220Fx Series, Serial-to-Fiber Device Ser ver, Fiber Device Server, Device Server, Server</p>
---	--

References

-  [ICP DAS](#)
-  [PDS-220Fx Series](#)