

iCON



V1-X MIDI DAW Control Surface



ICON V1-X MIDI DAW Control Surface User Guide

[Home](#) » [Icon](#) » **ICON V1-X MIDI DAW Control Surface User Guide** 

Contents

- 1 ICON V1-X MIDI DAW Control Surface**
- 2 Product Information**
- 3 Product Usage Instructions**
- 4 Unpacking**
- 5 Setup**
- 6 Use**
- 7 Documents / Resources**
 - 7.1 References**
- 8 Related Posts**

iCON
P r o A u d i o



ICON V1-X MIDI DAW Control Surface



Product Information

Specifications:

- **Model:** V1-X MIDI DAW Control Surface
- **Package Includes:** Quick Start Guide x 1, AC adaptor x 1pc, V1-X PC x 1, USB3.0 Cable x 1, Magnec pegs x 2

Product Usage Instructions

Installation:

1. Visit www.iconproaudio.com and navigate to the product page's download section to download the driver.
2. Follow the step-by-step instructions provided on the website to complete the installation process.

Note: Do not connect your V1-X during this stage of installation.

Setting Up on Mac:

1. Turn on your Mac.
2. Install the V1-M+V1-X iMap software.
3. Press down the 4th rotary encoder and switch on the V1-M/V1-X when turning it on for the first time.
4. Select your system and open the iMap software.

Everyday Use:

1. Launch the iMap software on your computer.
2. Setup your Digital Audio Workstation (DAW) preferences using the iMap interface.
3. Customize the control surface mappings according to your needs.

Frequently Asked Questions (FAQ):

- **Q: Where can I download the driver for V1-X?**

A: You can download the driver from www.iconproaudio.com by visiting the product page's download section.

- **Q: How do I set up the V1-X on my Mac?**

A: To set up on Mac, turn on your Mac, install the iMap software, and follow the on-screen instructions to configure your system preferences.

- **Q: Can I customize the control surface mappings for different Digital Audio Workstations?**

A: Yes, you can customize the control surface mappings using the iMap software to suit different DAW requirements.

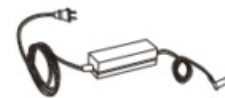
Unpacking



V1-X PC x 1



Quick Start Guide x 1



AC adaptor x 1pc



USB3.0 Cable x 1



Magnetic pegs x 2

Please visit www.iconproaudio.com and go to the product page's download section to download its driver. Follow the step by step instructions to complete the installation.

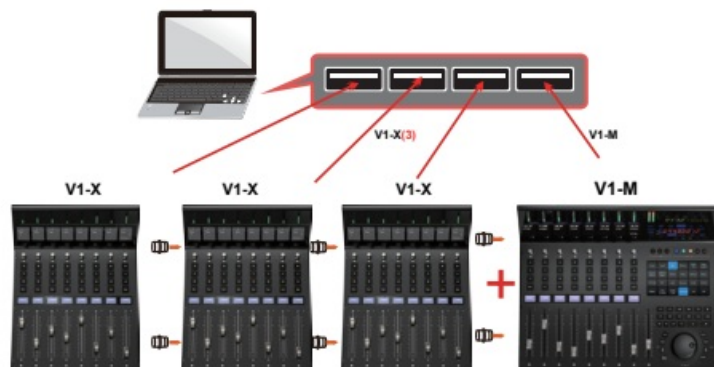
Note: Please do not connect your V1-X at this stage.

Setup

When turning on for the 1st time



In Every Day Use



• Mac

Turn on your Mac

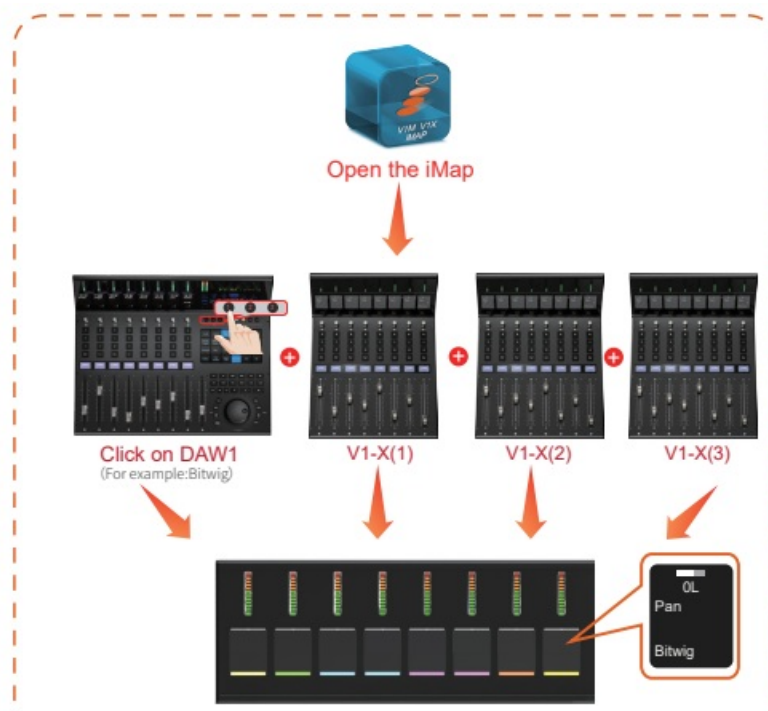


• PC

Turn on your computer



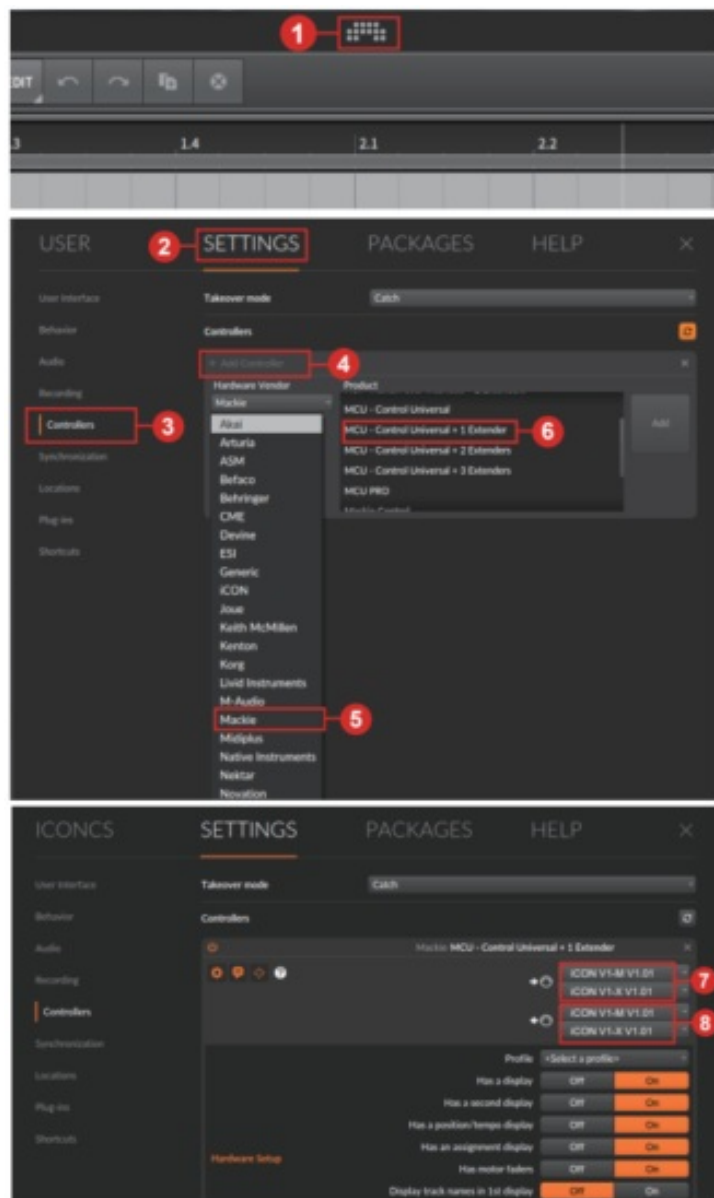
Use



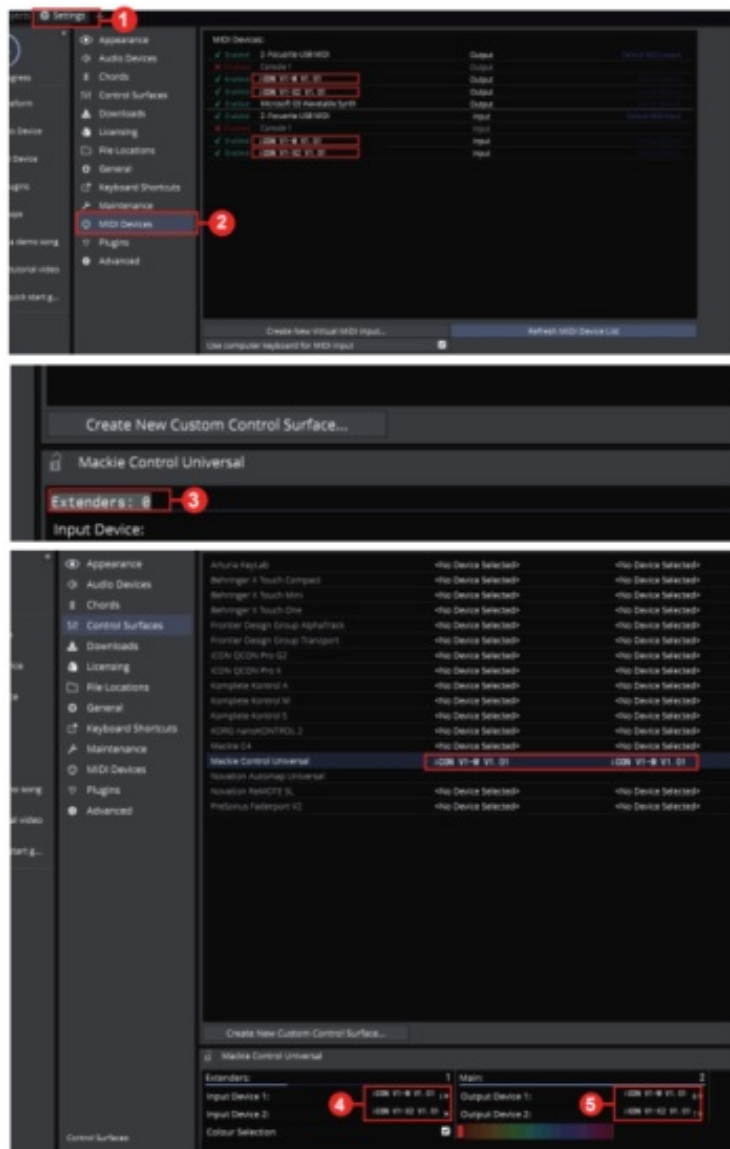
For Mackie Control / HUI

(For information on how to install [script], please see the manual)

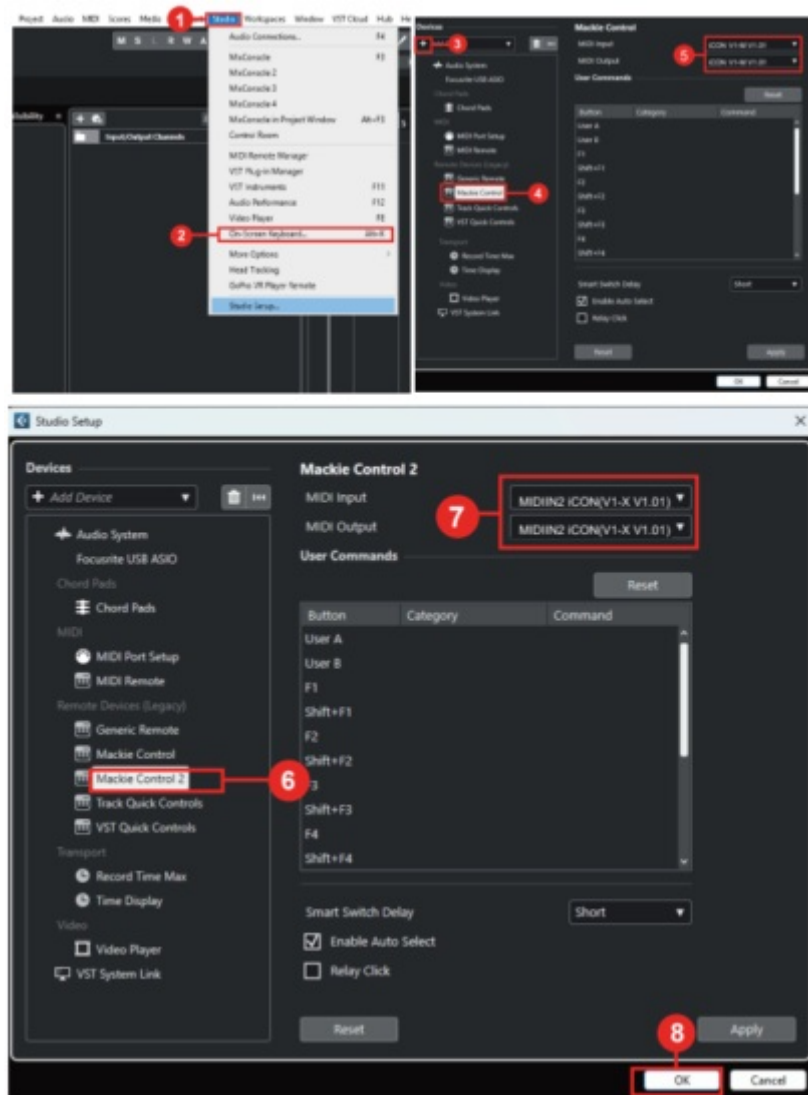
Bitwig



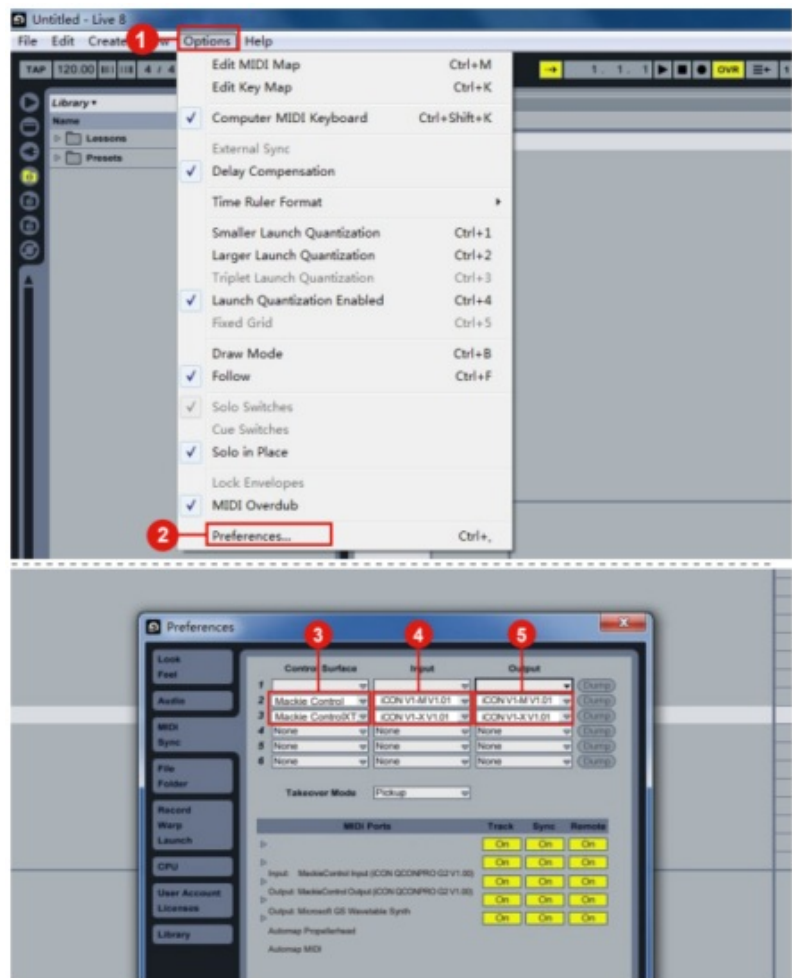
Waveform



Cubase/Nuendo



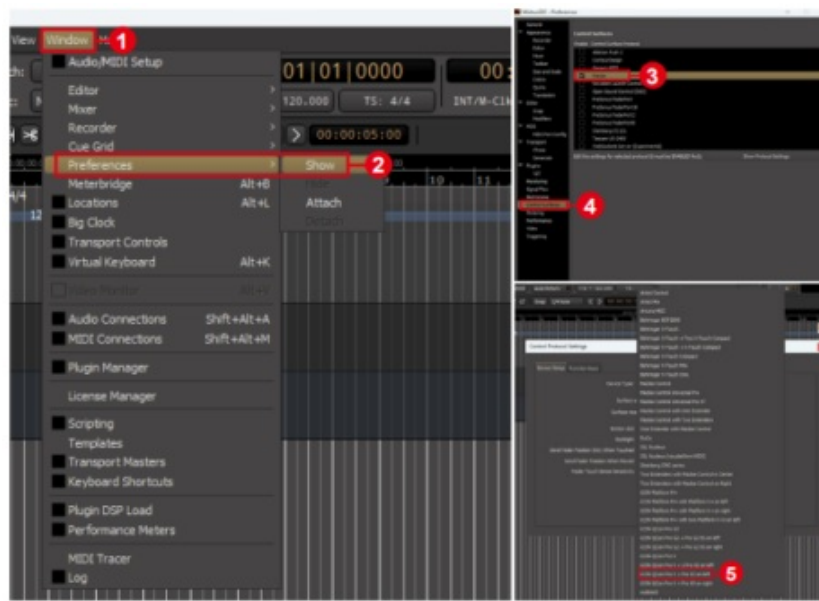
Ableton Live



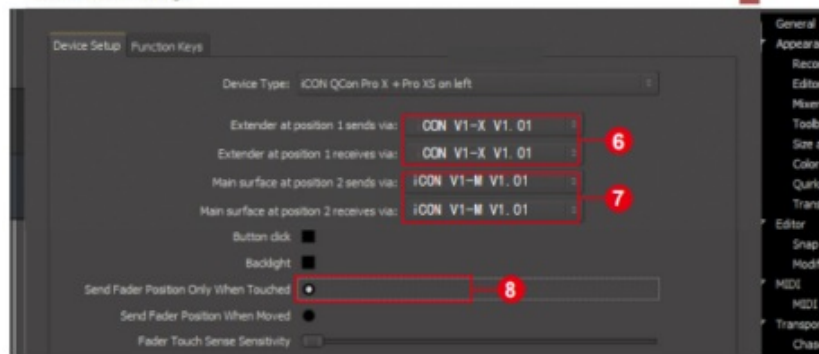
Studio One



Mixbus 32C

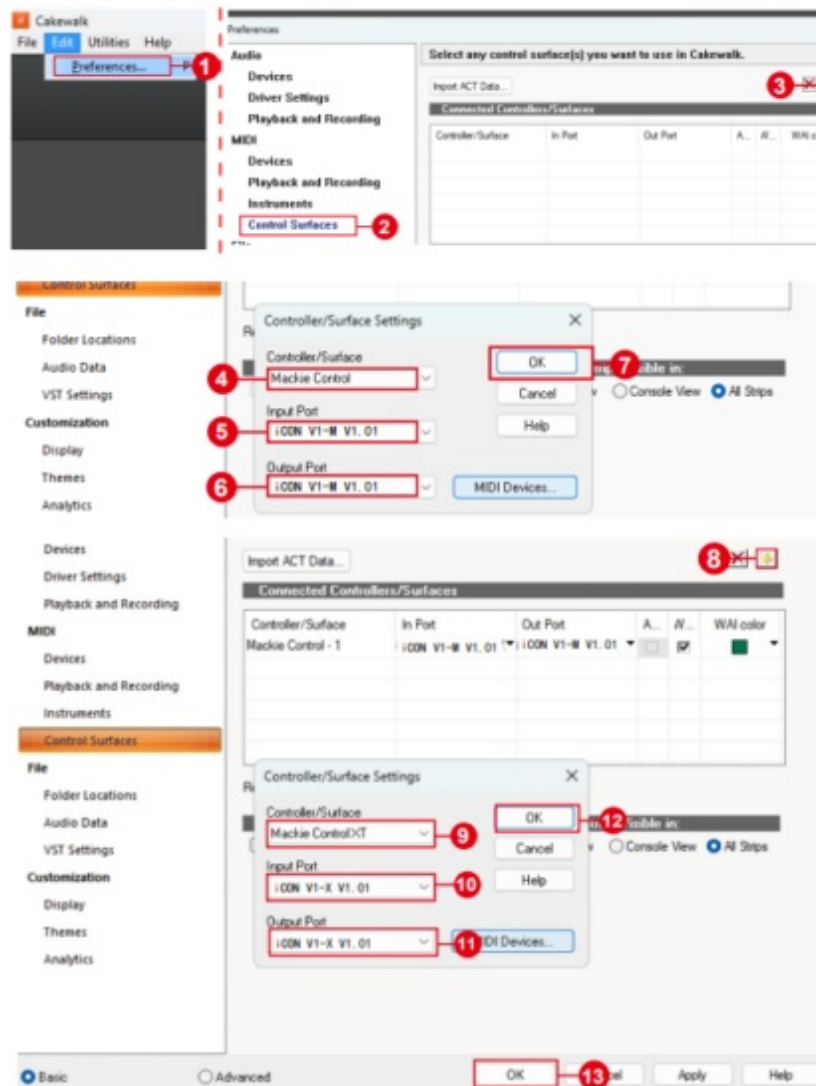


Control Protocol Settings

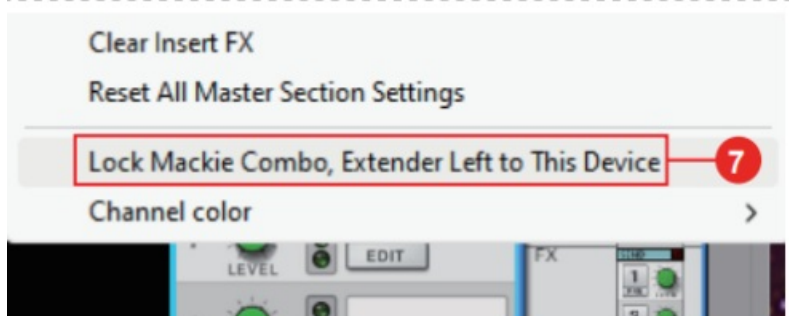
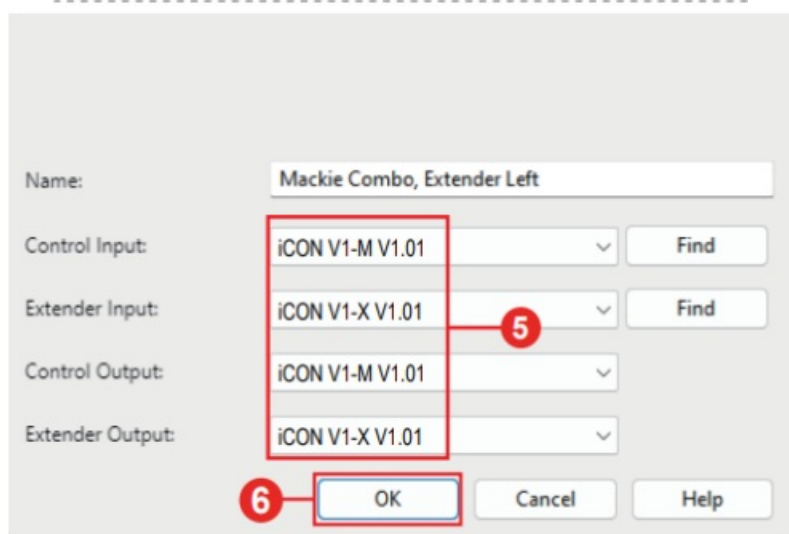
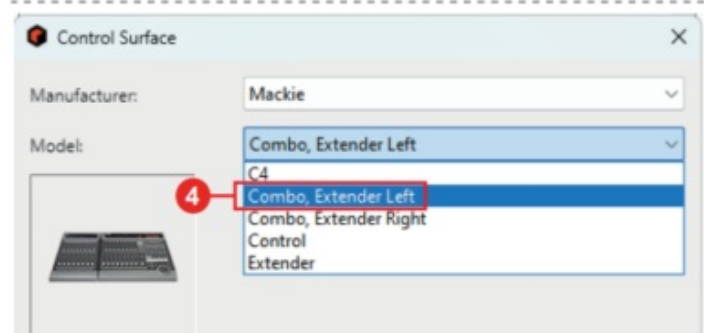
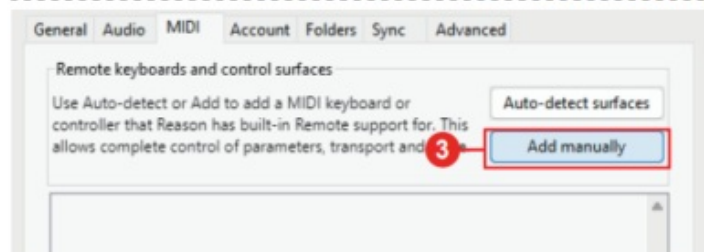
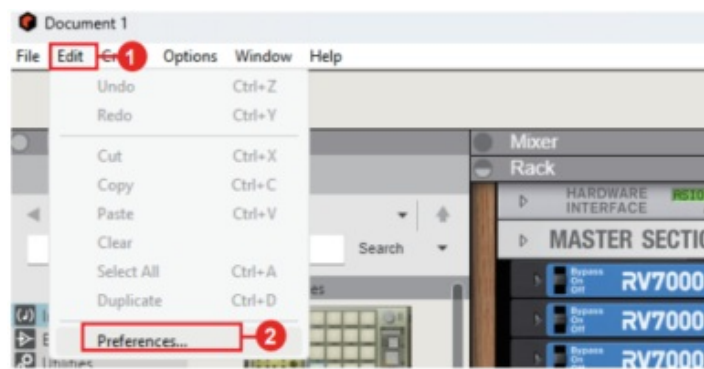


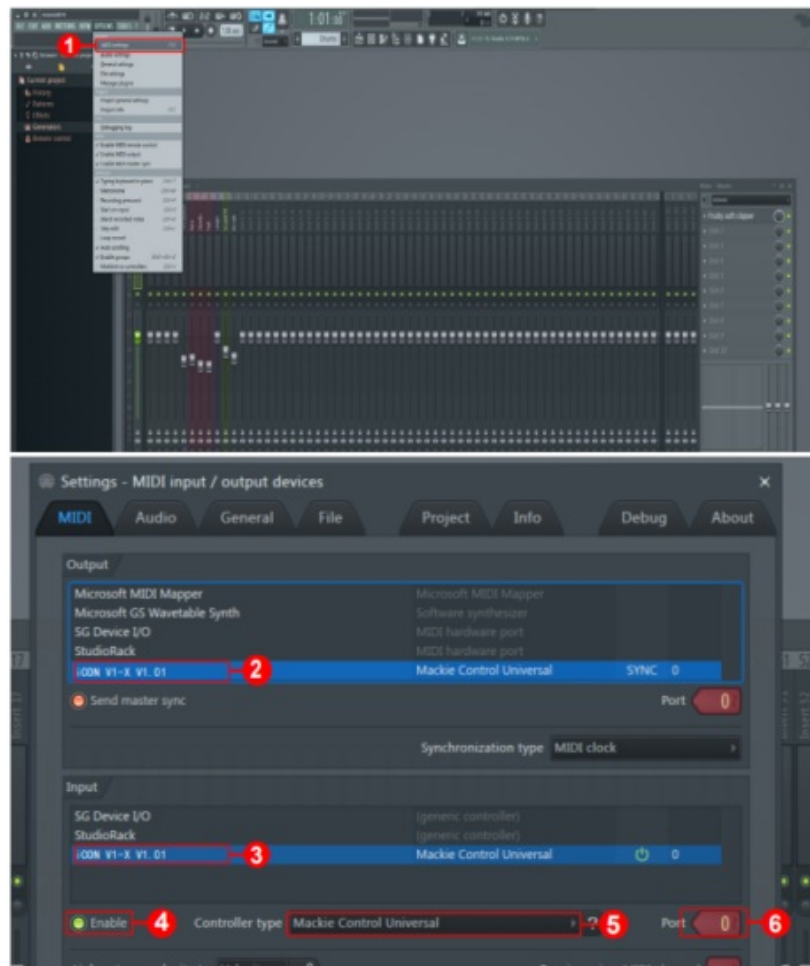
LUNA



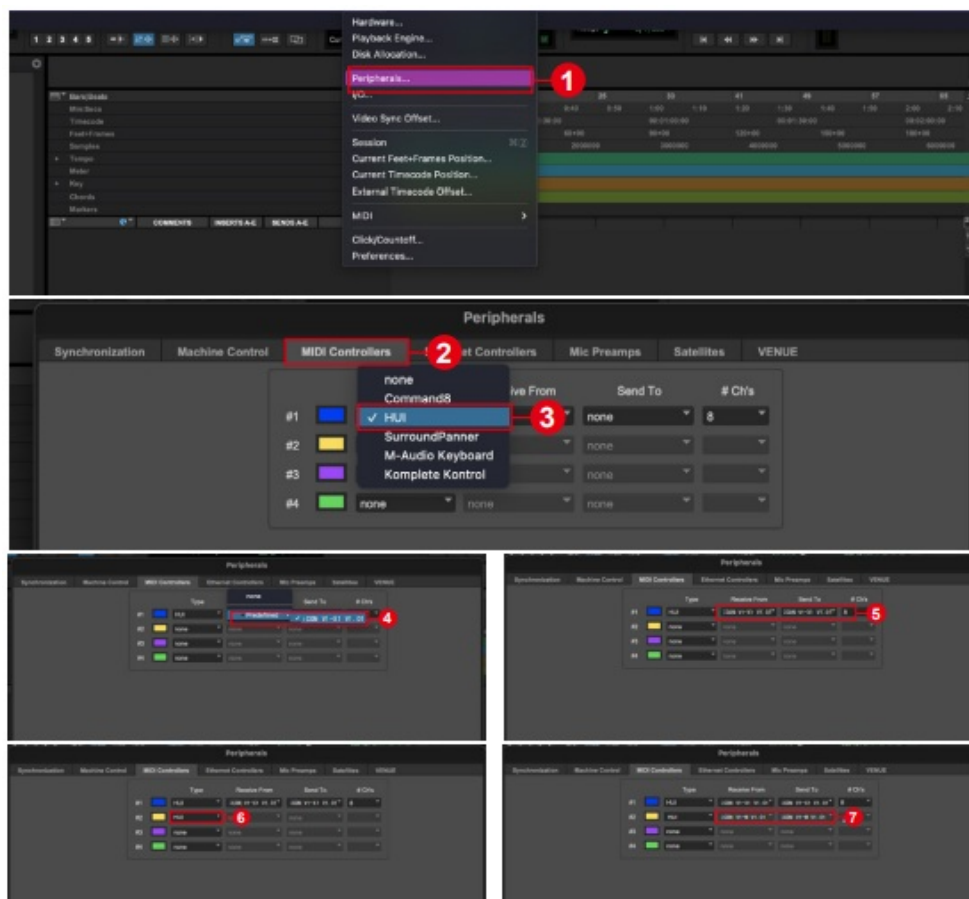


Reason

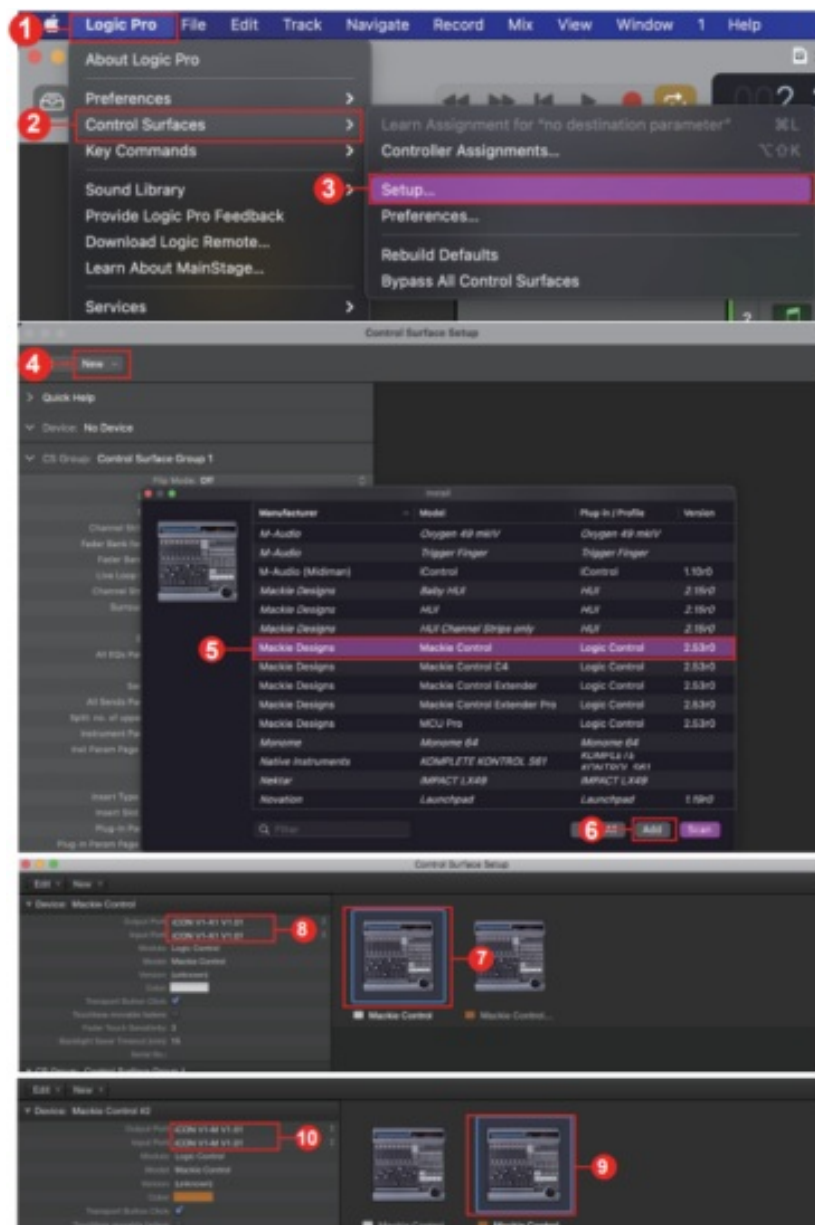




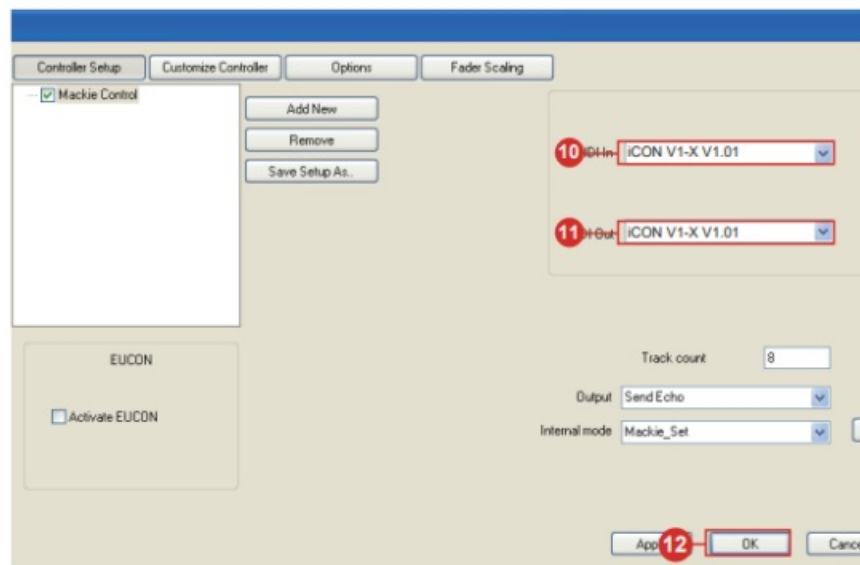
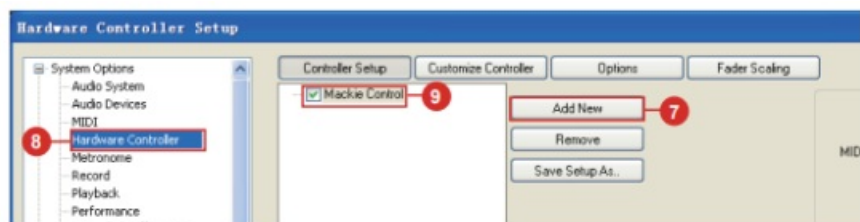
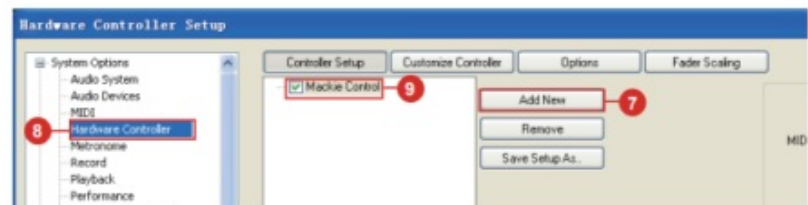
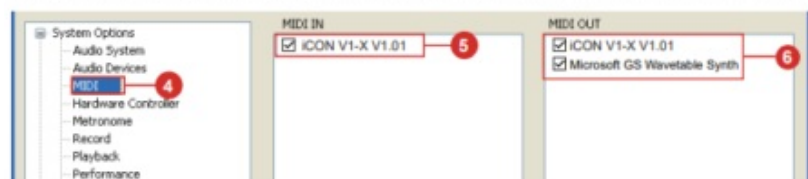
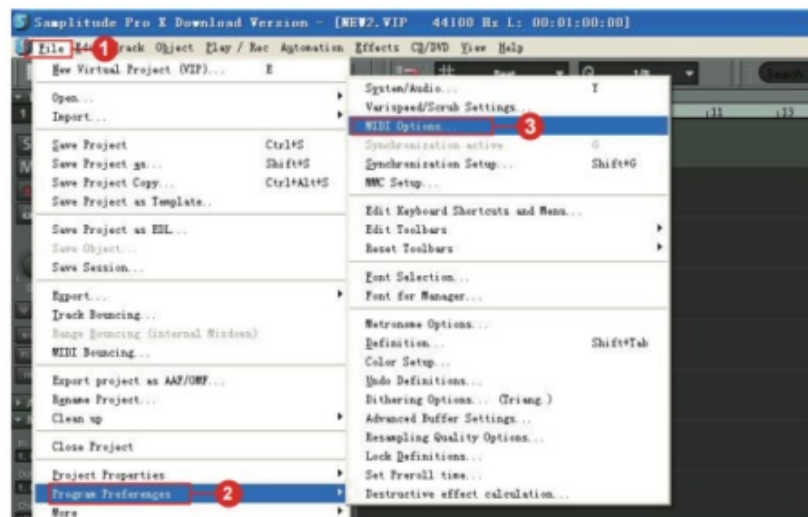
Pro Tools



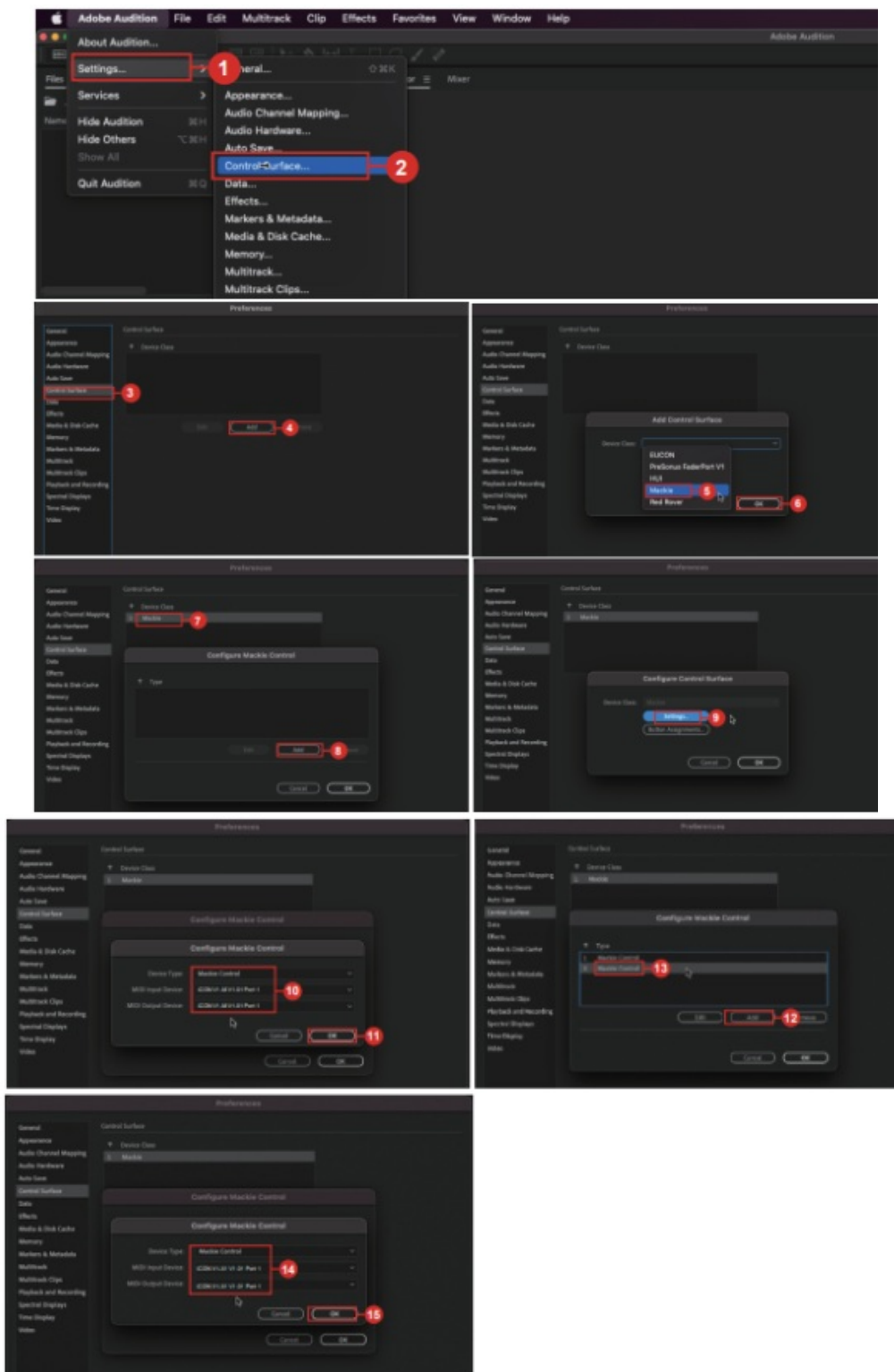
Logic pro



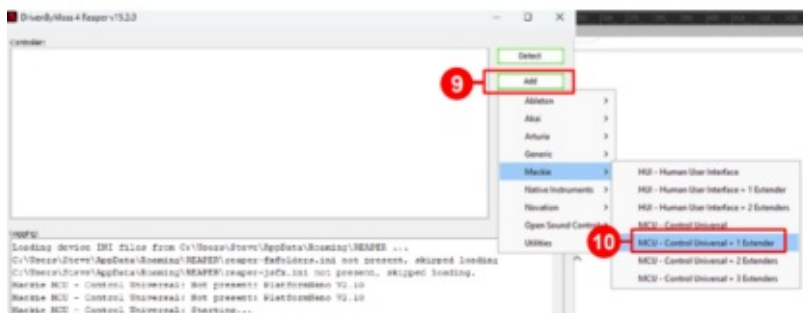
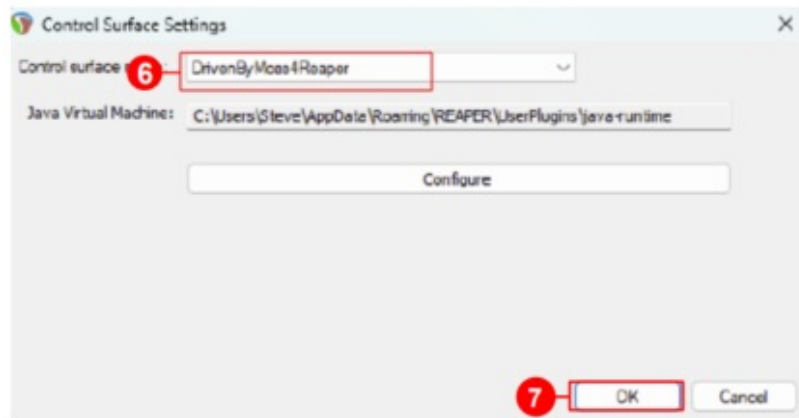
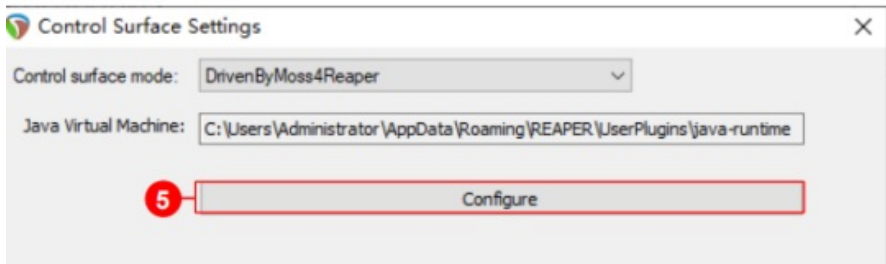
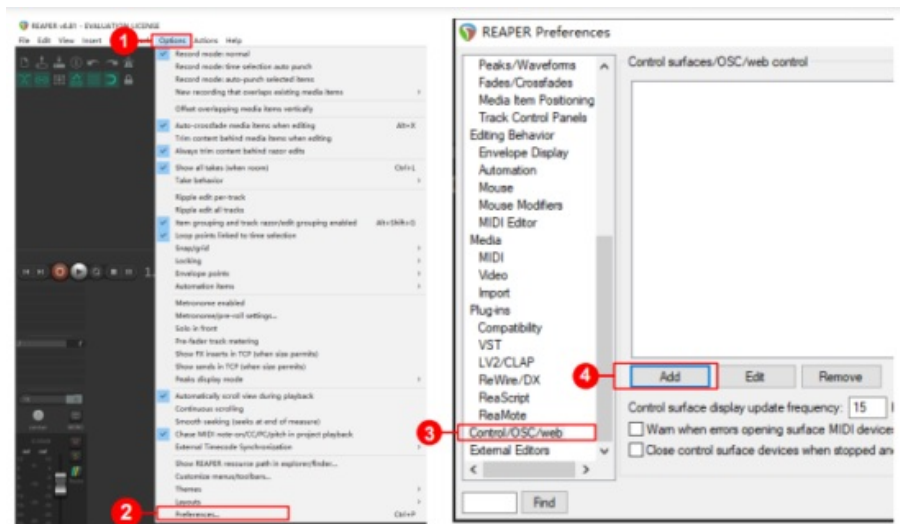
Samplitude



Audition



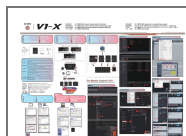
Reaper





www.iconproaudio.com

Documents / Resources



[iCON V1-X MIDI DAW Control Surface](#) [pdf] User Guide

V1-M, V1-X MIDI DAW Control Surface, V1-X, MIDI DAW Control Surface, DAW Control Surface , Control Surface, Surface

References

- [i iCON](#) |
- [User Manual](#)

[Manuals+](#), [Privacy Policy](#)

This website is an independent publication and is neither affiliated with nor endorsed by any of the trademark owners. The "Bluetooth®" word mark and logos are registered trademarks owned by Bluetooth SIG, Inc. The "Wi-Fi®" word mark and logos are registered trademarks owned by the Wi-Fi Alliance. Any use of these marks on this website does not imply any affiliation with or endorsement.