



ICON PRO AUDIO I-KEYBOARD NANO USB MIDI Controller Keyboard User Manual

[Home](#) » [ICON PRO AUDIO](#) » ICON PRO AUDIO I-KEYBOARD NANO USB MIDI Controller Keyboard User Manual



Contents

- [1 ICON PRO AUDIO I-KEYBOARD NANO USB MIDI Controller Keyboard](#)
- [2 Product Information](#)
- [3 Product Usage Instructions](#)
- [4 MODELS](#)
- [5 Important Safety Instructions](#)
- [6 Introduction](#)
- [7 What's in the package](#)
- [8 Register your ICON](#)
- [9 Features](#)
- [10 Front Panel Layout](#)
- [11 Rear panel layout](#)
- [12 Getting Started](#)
- [13 Download the Windows](#)
- [14 Firmware upgrade](#)
- [15 Velocity curve](#)
- [16 Specifications](#)
- [17 Dimensions](#)
- [18 Services](#)
- [19 Documents / Resources](#)
 - [19.1 References](#)
- [20 Related Posts](#)



ICON PRO AUDIO I-KEYBOARD NANO USB MIDI Controller Keyboard



Product Information

The ICON iKeyboard series is a range of USB MIDI controller keyboards available in different sizes: 3Nano, 4Nano, 5Nano, 6Nano, and 8Nano. These keyboards feature velocity-sensitive piano-style keys, allowing for expressive playing. They are designed to provide seamless integration with MIDI-compatible software and hardware, making them ideal for music production, composition, and live performances.

Product Usage Instructions

Before using the ICON iKeyboard, please read and follow the important safety instructions provided in the user manual.

1. Ensure you have read the user manual thoroughly before using the keyboard.
2. Keep the user manual for future reference.
3. Comply with all warnings and instructions mentioned in the user manual or indicated on the appliance.
4. Avoid exposing the keyboard to rain, moisture, or any liquids. Keep it dry at all times.
5. When cleaning the keyboard, use a dry or slightly damp soft cloth. Do not use any liquids or abrasive materials.
6. Ensure proper ventilation by not blocking any ventilation openings.
7. Avoid placing the keyboard near heat sources like radiators, heat registers, stoves, or other heat-producing appliances.
8. Use the provided polarized or grounding-type plug and consult an electrician if it does not fit into your outlet.
9. Protect the power cord from damage and avoid touching exposed wiring while the keyboard is in operation.
10. Only use attachments/accessories specified by the manufacturer.
11. During lightning storms or when the keyboard is left unused for a long period of time, unplug it and all connected electrical equipment.
12. Refer all servicing to qualified service personnel if the keyboard has been damaged or fails to operate normally.

For a detailed description of the features, setup instructions, and full specifications of your specific model (iKeyboard 3Nano / 4 Nano / 5Nano / 6Nano / 8Nano), please refer to the user manual provided. To register your product, visit our website at <https://www.iconproaudio.com/registration>. Registering your product will allow us to provide better support and keep you updated with any important information or updates. We recommend retaining the original packaging in case the product needs to be returned for servicing. The original packaging or a reasonable equivalent is required for safe transportation. With proper care and adequate air circulation, your iKeyboard 3Nano / 4 Nano / 5Nano / 6Nano / 8Nano will provide reliable performance for many years. It is recommended to record the serial number of your keyboard in the space provided on the product for future reference.

MODELS

iKeyboard 3Nano



iKeyboard 4Nano



iKeyboard 5Nano



iKeyboard 6Nano



iKeyboard 8Nano



Important Safety Instructions

1. Read this manual thoroughly before using this unit.
2. Keep this manual for future reference.
3. Take notice of and comply with all warnings included in the user's manual or indicated on the appliance.
4. Follow all instructions included in this manual.
5. Do not expose this unit to rain or moisture. Avoid having water or other liquids spilled on this unit.
6. When cleaning the cabinet or other parts of this appliance, use only a dry or slightly damp soft cloth.
7. Do not block any ventilation openings or interfere with the proper ventilation of this unit. Install in accordance with the manufacturer's instructions.
8. Do not use or store near any heat sources such as radiators, heat registers, stoves, or other heat-producing appliances.
9. Do not interfere with the safety purpose of the polarized or grounding-type plug. A polarized plug has two blades with one wider than the other. A grounding-type plug has two blades and a third grounding prong. These are designated for your safety. If the provided plug does not fit into your outlet, consult an electrician.
10. Protect the power cord from being walked on or otherwise damaged by items placed on or against them. Particular attention should be given to the plugs, receptacles, and the point where the cord exits the appliance.
11. To avoid the risk of electrical shock, do not touch any exposed wiring while the unit is in operation.
12. Only use attachments/accessories specified by the manufacturer.

13. Unplug this unit and all connected electrical equipment during lightning storms or when left unused a long period of time.
14. Refer all servicing to qualified service personnel. Servicing is required when the appliance has been damaged in any way or fails to operate normally.
 - **WARNING:** To reduce the risk of fire or electric shock, do not expose this unit to rain or moisture

Introduction

- Thank you for purchasing the ICON iKeyboard 3Nano / 4 Nano /5Nano / 6Nano / 8Nano USB MIDI controller. We sincerely trust this product will provide years of satisfactory service, but if anything is not to your complete satisfaction, we will endeavor to make things right.
- In these pages, you'll find a detailed description of the features of the iKeyboard 3Nano / 4 Nano /5Nano / 6Nano / 8Nano, as well as a guided tour through its front and rear panels, step-by-step instructions for their setup and use, and full specifications.
- Please register the product on our website at the below link www.iconproaudio.com/registration:
- Please follow the step-by-step procedures. Start by inputting the device's serial number as well as your personal information, etc. By registering your product online, you will be entitled to service and after-sales support at our Help Center by visiting our website at www.iconproaudio.com.
- Also, all the registered products under your account will be listed on your personal product page where you will find updated information such as firmware/driver upgrades, software bundles, user manual downloads, etc. for your device.
- As with most electronic devices, we strongly recommend you retain the original packaging. In the unlikely event the product must be returned for servicing, the original packaging (or reasonable equivalent) is required.
- With proper care and adequate air circulation, your iKeyboard 3Nano / 4 Nano /5Nano / 6Nano / 8Nano will operate without any trouble for many years. We recommend that you record your serial number in the space provided below for future reference.

What's in the package

- iKeyboard 3Nano / iKeyboard 4Nano / iKeyboard 5Nano / iKeyboard 6Nano / iKeyboard 8Nano – 25/37/49/61/88-note velocity-sensitive piano-style keys USB
- MIDI controller keyboard x 1
- Quick Start Guide x 1
- USB 2.0 cable x 1

Register your ICON

Register your ICON ProAudio product to your personal account

1. Check the serial number of your device

Please go to <https://iconproaudio.com/registration> or scan the QR code below.



- Input your device's serial number and the other information on the screen. Click "Submit". A message will pop up showing your device information such as model name and serial number – Click "Register this device to my account" or if you see any other message, please contact our after-sales service team
2. Log in to your personal account page for existing users or sign up for new user
 - **Existing user:** Please log in to your personal user page by inputting your username and password.
 - **New user:** Please click "Sign Up" and fill in all the information.
 3. **Download all useful materials**

All your registered devices under your account will show on the page. Each product will be listed along with all its available files such as drivers, firmware, user manuals in different languages, and bundled software, etc. for download. Please make sure you have downloaded the necessary files such as the driver before you begin device installation.

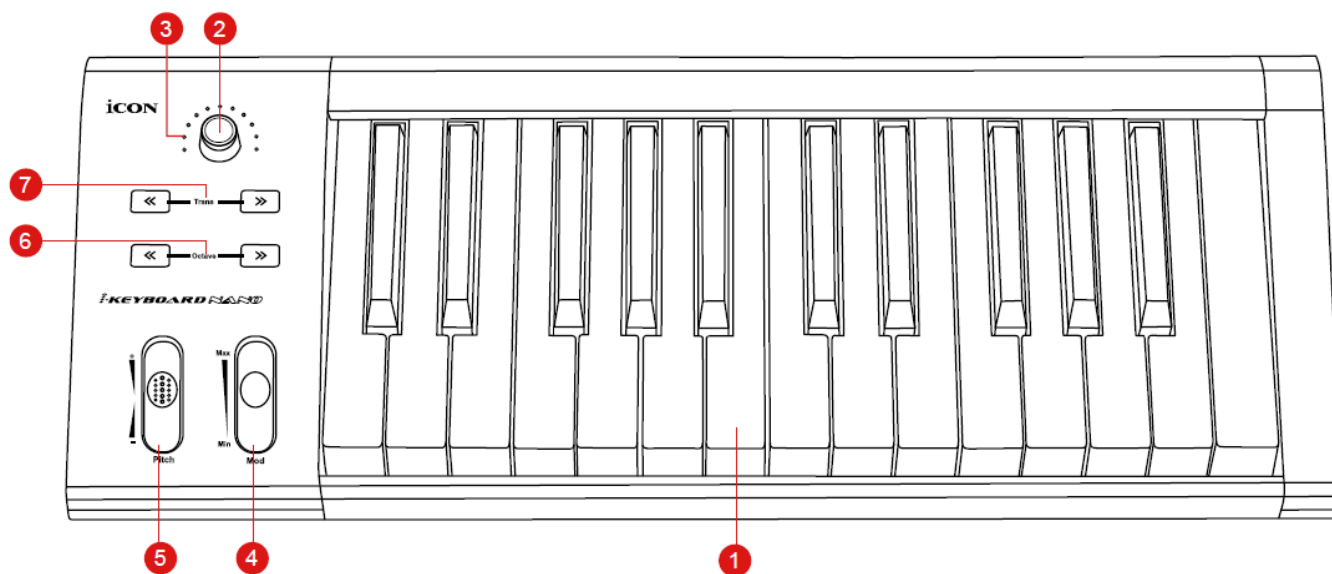
Features



- Dual function encoder knob (Enter & rotate)
- 11-segment LED surrounding the encoder to indicate the rotating position (Volume & Pan).
- Velocity-sensitive piano style keyboard
- Modulation and Pitch jog-wheel
- Octave up/down buttons
- Transpose up/down buttons
- Multi velocity curves available for selection (Key and Pads)

- Midi output jack
- Expression & sustain pedal TRS connectors
- Sustain pedal connector polarity reversible
- Class-compliant with Windows XP, Vista (32-bit/64-bit), Windows 7/8/10 (32-bit & 64-bit), and Mac OS X (IntelMac)
- USB 2.0 high-speed connectivity
- Firmware upgrades were available simply via USB connection and iMap software.
- Robust metal casing with Kensington lock port

Front Panel Layout



1. 25/37/49/61/88-note key switches

25/37/49/61/88-note velocity-sensitive piano-action key switches.

2. Dual function encoders

The dual functioned encoder acting as a push-button and a rotary control. When an encoder is pressed, it may be used to change modes of operation or to change what appears in the display above the channel strips. When an encoder is rotated, depending on its assigned function, it can be used to adjust a channel's pan, send level, or plug-in parameters.

3. Encoder LED

The 11-LED surrounding the encoder lights up to indicate the relative position of the rotation without having to look at your computer.

4. Modulation jog wheel

Rotate to adjust the modulation effect.

5. Pitch jog wheel

Rotate to adjust the pitch bend. It returns to default, "0" when released.

6. Octave buttons

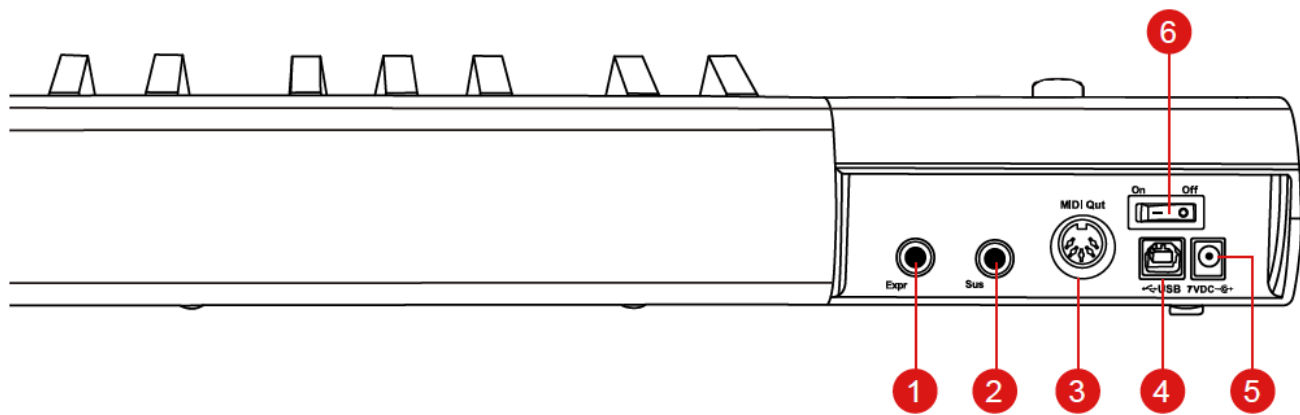
Raise or lower the pitches played on your keyboard.

7. Transpose button (Use in conjunction with the Octave up/down buttons)

Raise or lower the pitches (by less than an octave) played on your keyboard.

(**Tip:** While pressing and holding the "Transpose" button, press a keyswitch within an octave range from the original c1 position) to change the c1 to that particular switch.)

Rear panel layout



1. Expression Pedal Input

A standard expression pedal can be connected via this 1/4" input.

2. Sustain Pedal Input

This 1/4" jack can be used to connect a momentary footswitch, like a piano's sustain pedal. (ICON SPD-01)

Tip: You may reverse the sustain pedal connector polarity with the provided iMap.

3. Midi Out Port

Use the MIDI Out terminal to connect an external synthesizer or sound module.

4. USB port

Functions as a MIDI port to your notebook (or computer) and compatible software. Also provides power to your iKeyboard 3Nano/4Nano/5Nano/6Nano/8Nano.

5. 7V/1A DC power adapter connector

Connect your 7V/1A DC power adapter (optional) here.

6. Power switch

Power switch for your iKeyboard 3Nano/4Nano/5Nano/6Nano/8Nano

Getting Started

Connecting your keyboard Nano controller

1. Connect the keyboard Nano to your Mac/PC via the USB port.

Choose a USB port on your Mac/PC and insert the wide (flat) end of the USB cable. Connect the cable's small jack end to the keyboard Nano. Your Mac/PC should automatically "see" the new hardware and notify you that it is ready to use.

2. Setup your DAW

Activate the ICON keyboard Nano controller in your DAW or MIDI software using "MIDI Setup" or "MIDI Devices".

Download the Windows

Download the Windows driver from your "Personal User Page at www.iconproaudio.com"

After you download the driver file, please click it to start the installation process.

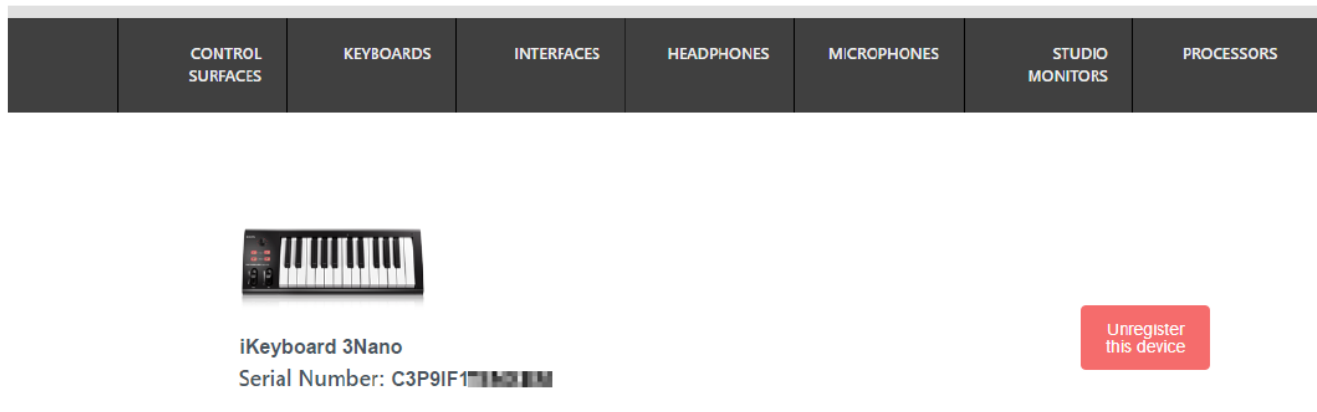


Diagram 1

1. iMap™ Software for Mac OS X

Please follow the procedures below step-by-step to launch your iMap™ software in Mac OS X.

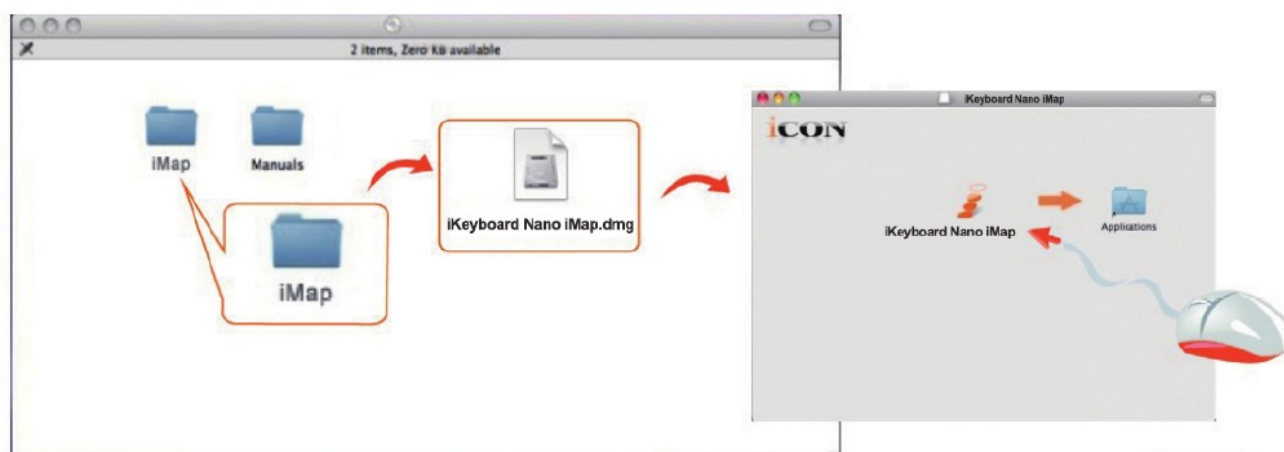


Diagram 2

- Tips:** By “dragging and dropping” the “keyboard Nano” icon into the “Applications” folder, you can create a “iMap” shortcut on your Mac’s desktop.

Installing iMap™ Software for Windows

Please follow the procedures below step-by-step to install your iMap™ software.

- Turn on your PC**
- Download the Windows driver from your “Personal User Page at www.iconproaudio.com”**
After you download the driver file, please click it to start the installation process.
- Setup Wizard appears**
The setup wizard appears, please click “Next”.



Diagram 3

4. Choose Install Location

Choose your preferred install location for iMap™ or use the default location and click “Next”.

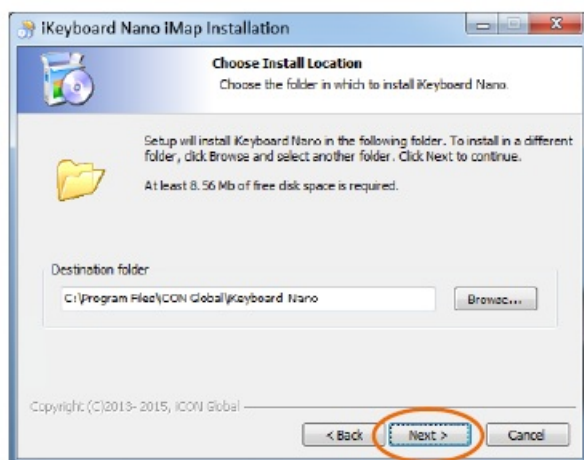


Diagram 4

5. Select shortcut

Select the start menu folder in which you would like to create the iMap™ shortcut. Then click “Next”.

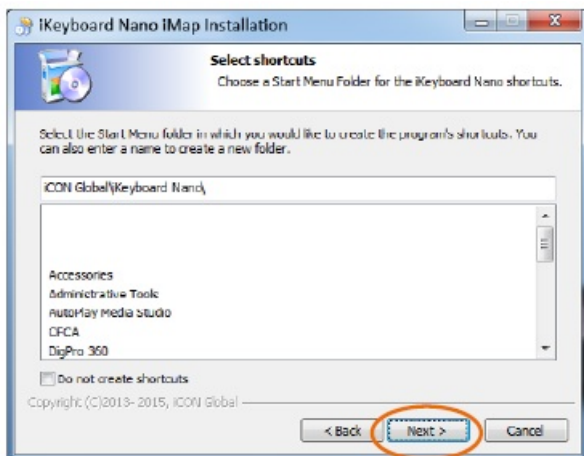


Diagram 5

6. Create a shortcut on your desktop

Please untick the box if you do not want to place a shortcut icon on your desktop for iMap™, otherwise click “Next”.

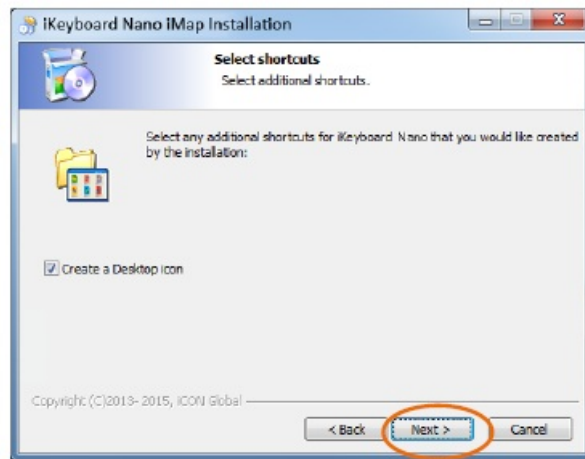


Diagram 6

7. iMap™ started to install

The iMap™ installation has now started, wait for it to finish. Then click “Finish”.

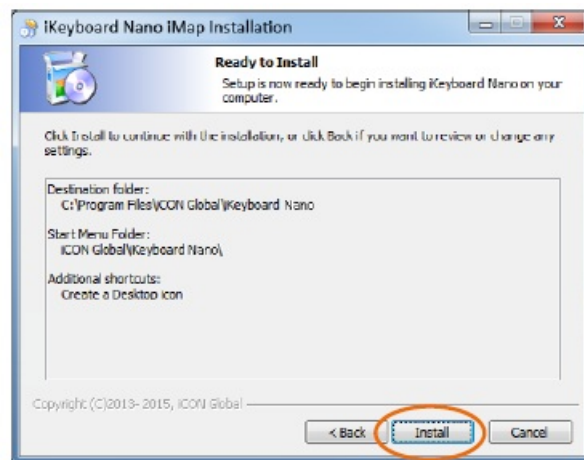


Diagram 7

8. Installation finished

Click “Finish” to complete the iMap™ software installation.



Diagram 8

Assigning MIDI functions with iMap™

You can use iMap™ to easily assign the MIDI functions of your ikeyboard Nano.

Note: If your ikeyboard Nano is not connected to your Mac/PC, the message “There are no MIDI input devices” will appear. Please connect ikeyboard Nano to your Mac/PC with the provided USB cable.

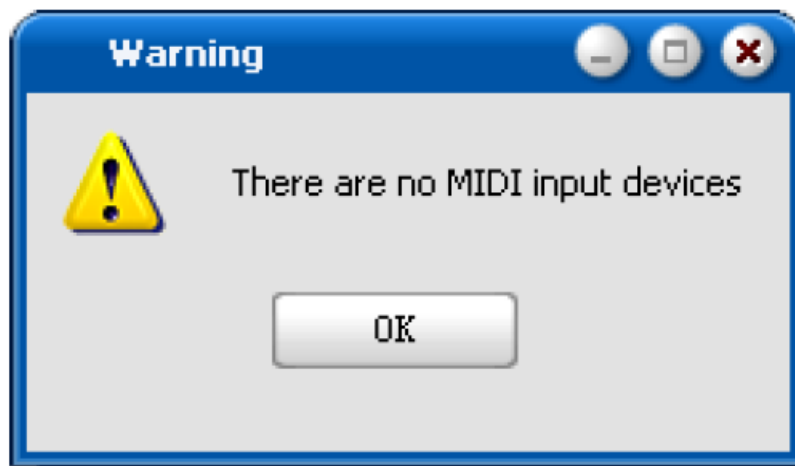
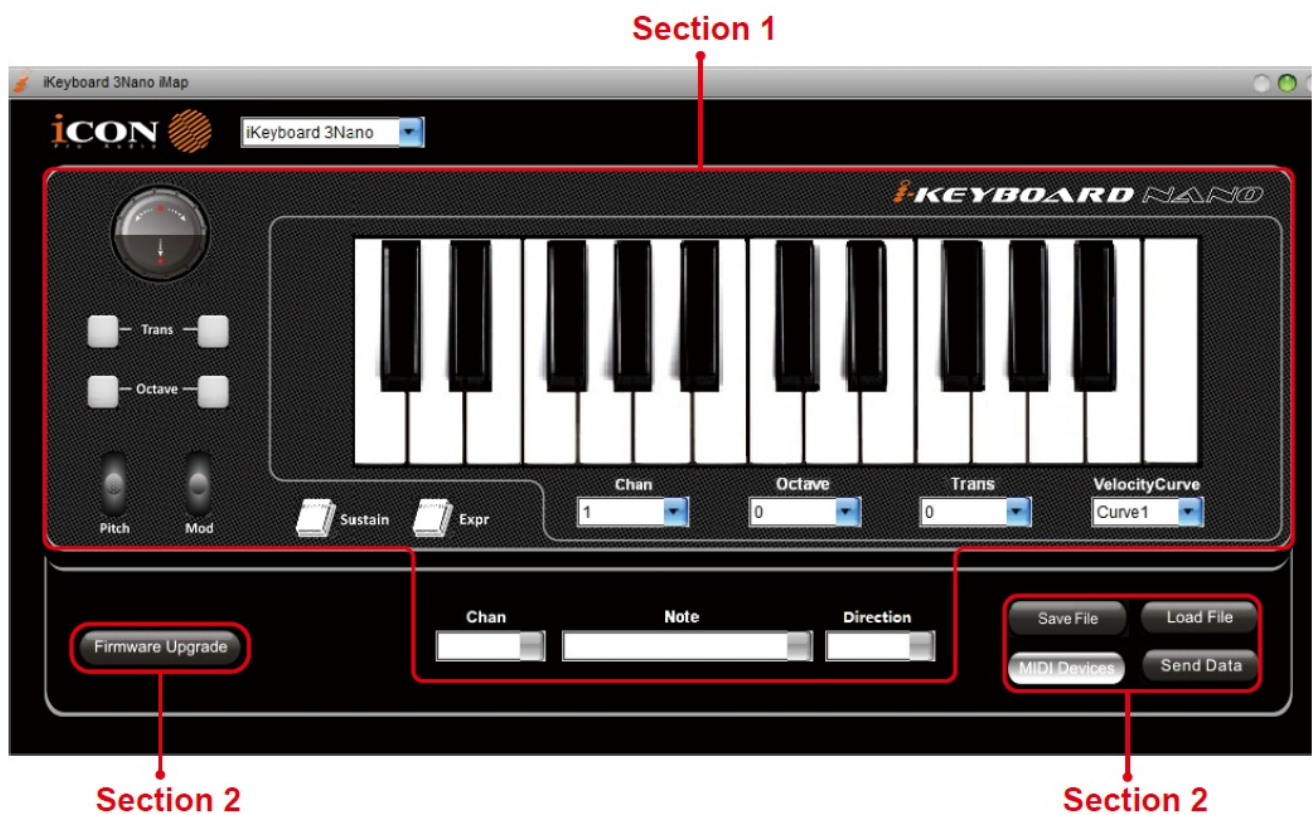


Diagram 9

iMap™ ikeyboard Nano software panel

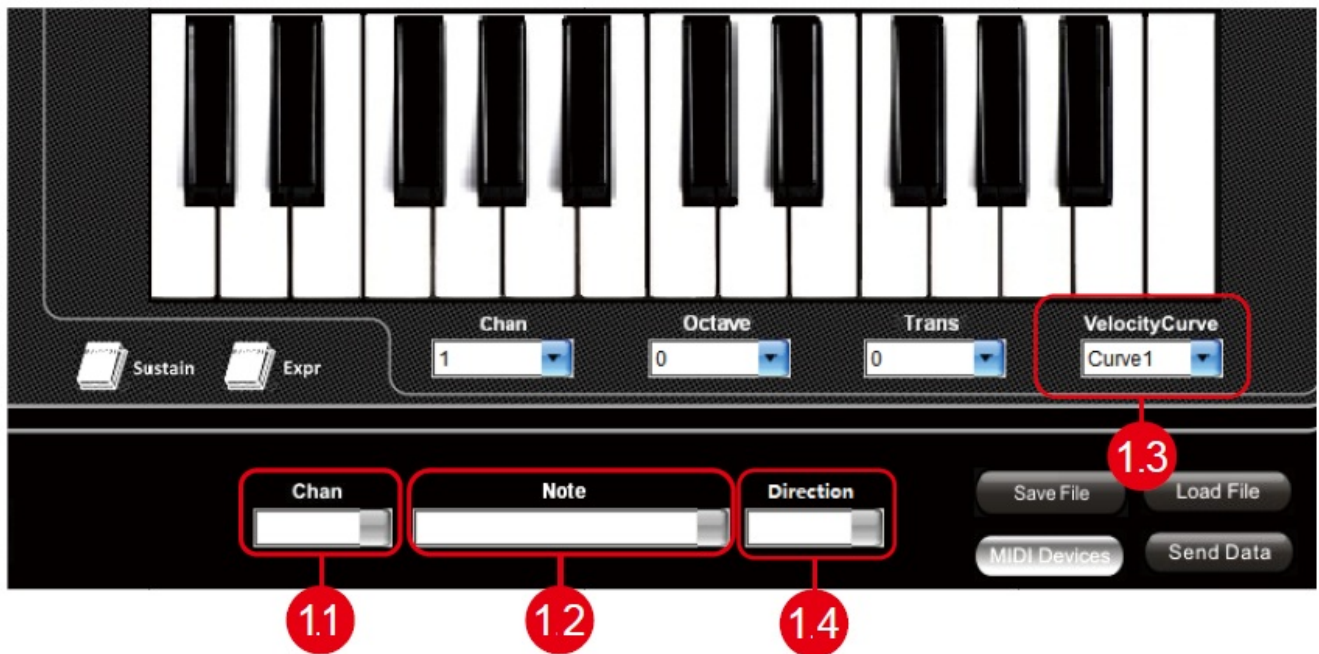
ikeyboard Nano's iMap is divided into two main sections as described below:



Section 1

- **Keyboard elements assignment**

These elements include the key switches, velocity curve, modulation/pitch bend jog wheel, Sustain & Expression pedal, Transpose & Octave buttons. These elements are assigned by the top three drop down windows. To assign a control, select it by clicking it and assign a different midi message by the two drop down menus (MIDI Channel & CC).



- **MIDI Channel**

Assign MIDI channel from 0-16.

- **CC value**

Assign MIDI CC value from 0-127.

- **Velocity Curve**

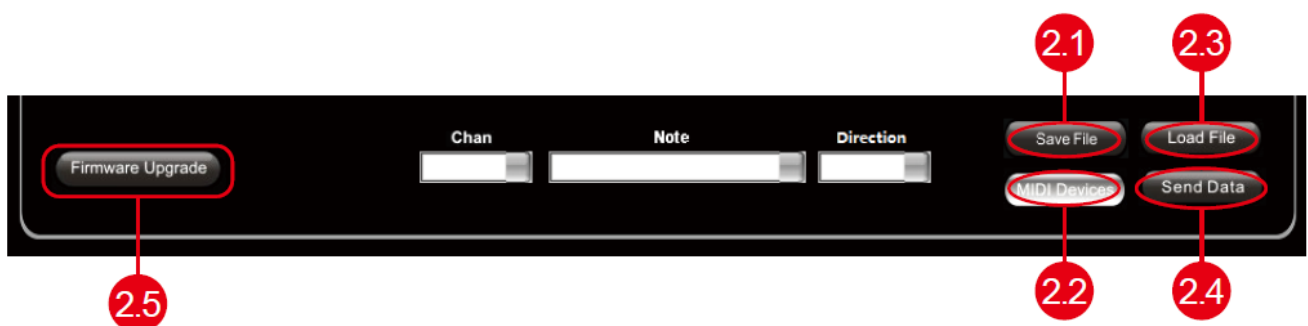
Select the available velocity curve of your keyboard. For the difference velocity curve diagram, please refer to P.19.

- **Sustain Pedal**

You could reverse the sustain pedal connector polarity. Please refer to P.18 for details.

Section 2

- **2.0 General setting to the keyboard**



- **“Save file” button**

Click this button to save your current settings for the iKeyboard Nano. The file is an “ikeyboard Nano” file.

- **“Load file” button**

Click this button to load a previously saved “. keyboard Nano” setting file for your keyboard Nano.

- **The “Send Data” button**

Click this button to upload the iMapTM software settings to your iKeyboard Nano via USB connection.

- **(Note:** You must have connected your keyboard Nano to your Mac/PC, otherwise the settings upload will not be successful.)

- **“MIDI Devices” button**

Click this button, and a MIDI device select window will appear as shown in diagram 10. Please select “ICON keyboard Nano” for the MIDI Out Devices.



Diagram 10

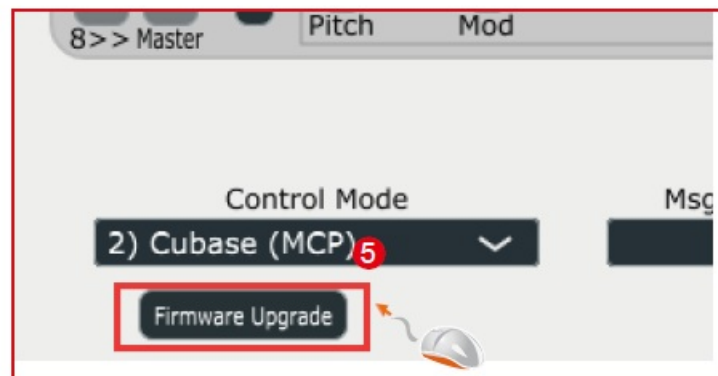
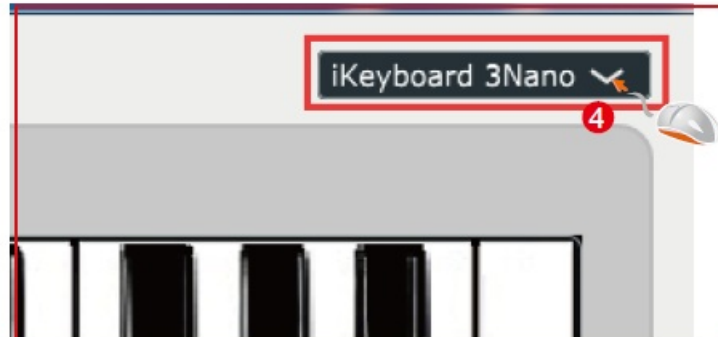
- **(Note:** Please make sure you have pressed this button every time you launched iMap, select your ICON product on the MIDI input-output Device pop-up menu to make sure the communication between iMap and your ICON product is created successfully.)

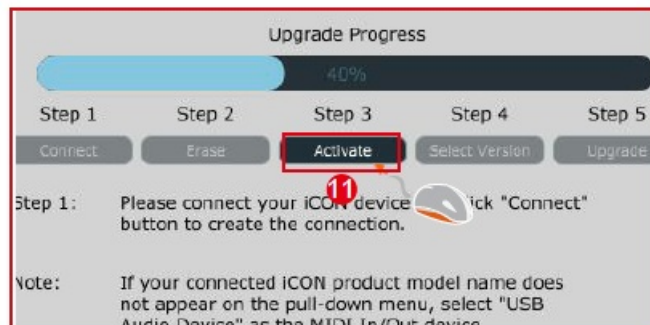
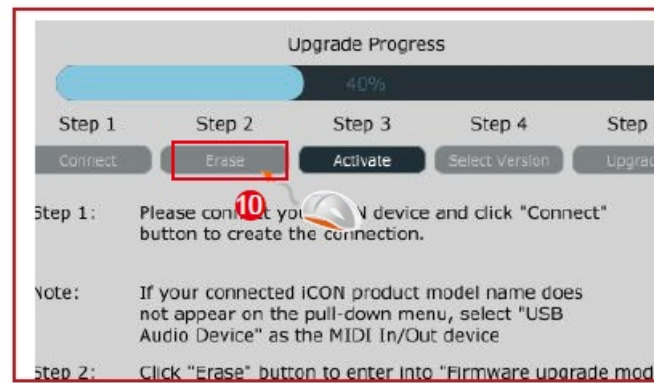
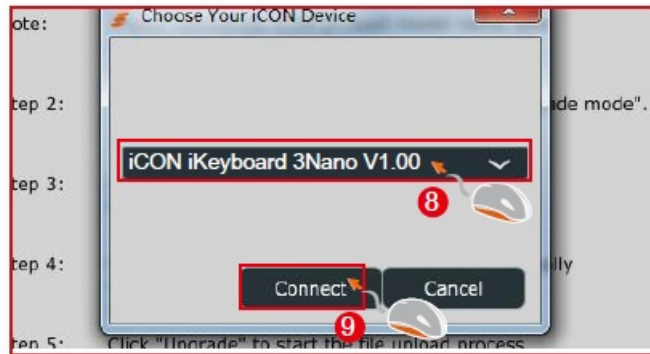
- **“Firmware Upgrade” button**

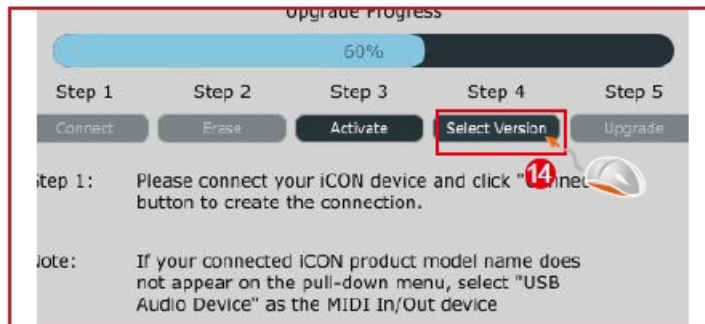
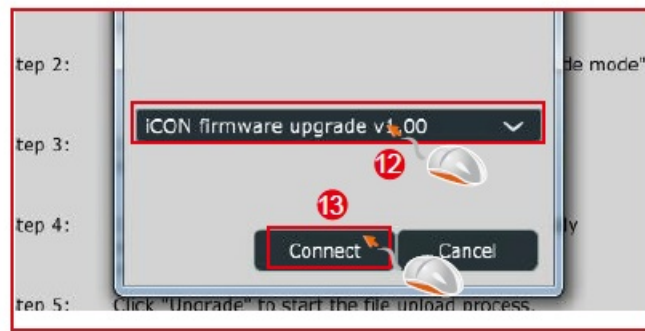
Click this button to enter into the firmware upgrade window for ikeyboard Nano. Please refer to P.15 for the firmware upgrade procedure.

Firmware upgrade

ikeyboard Nano functional firmware upload procedure







Restore the factory default settings

To restore your keyboard Nano settings to factory default, simply import the "Factory Default" setting file into your keyboard Nano with the original setting of the iMap software.

Reverse sustain pedal connector polarity

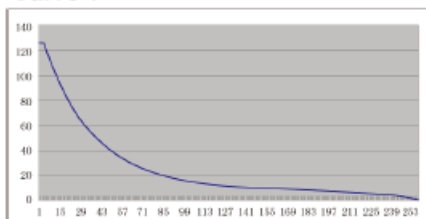
There are two major types of sustain pedals on the market, they have a reverse polarity and thus will have the exact opposite reaction. You may adjust the polarity of your keyboard Nano sustain pedal connector with the provided iMap (V1.03 or above). Please follow the below instructions to adjust the polarity.

1. Launch iMap again and click the "MIDI Devices" button to select iKeyboard Nano or USB Audio Device from the pop-up menu

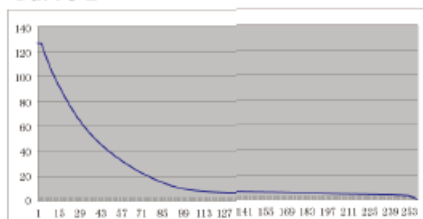
2. Click the 'Sustain Pedal' logo and select "reverse" on the left-side pulldown menu.
3. Click the "Send Data" button to upload the settings to your iKeyboard Nano.
4. Close iMap software.

Velocity curve

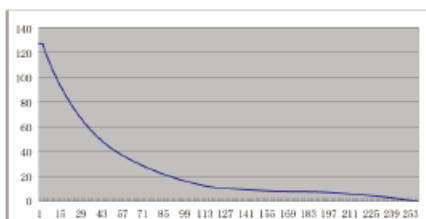
Curve 1



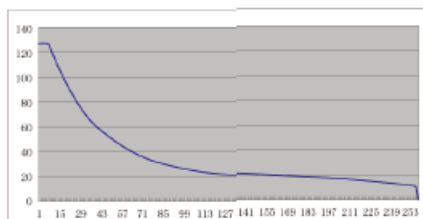
Curve 2



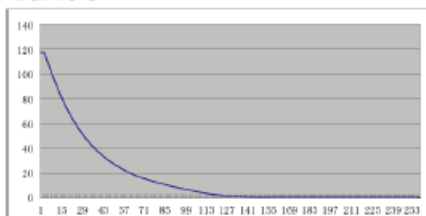
Curve 3



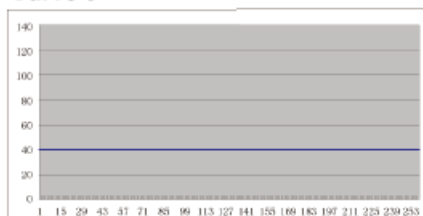
Curve 4



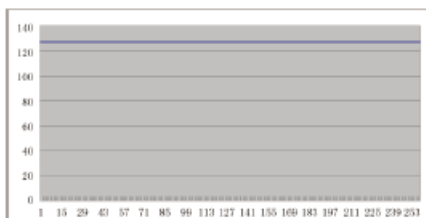
Curve 5



Curve 6



Curve 7



Specifications

Connector:

USB	USB connector (standard type)
Sustain & Expression	2×1/4" TS connectors
MIDI I/O	5-pin Din connector

Power supply	7V/1A DC
Current consumption	100mA or less

Weight:

iKeyboard 3Nano	2.17kg	4.78(lb)
iKeyboard 4Nano	3.03kg	6.68(lb)
iKeyboard 5Nano	3.87kg	8.53(lb)
iKeyboard 6Nano	4.7kg	10.36(lb)
iKeyboard 8Nano	6.56kg	14.46(lb)

Dimensions

iKeyboard 3Nano	476(L)x189(W)x72(H)mm
	18.7"(L)x7.44"(W)x2.83"(H)
iKeyboard 4Nano	641(L)x189(W)x72(H)mm
	25.4"(L)x7.44"(W)x2.83"(H)
iKeyboard 5Nano	806(L)x189(W)x72(H)mm
	31.7"(L)x7.44"(W)x2.83"(H)
iKeyboard 6Nano	971(L)x189(W)x72(H)mm
	38.2"(L)x7.44"(W)x2.83"(H)
iKeyboard 8Nano	1349(L)x189(W)x72(H)mm
	53.11"(L)x7.44"(W)x2.83"(H)

Services

If your ikeyboard Nano needs servicing, follow these instructions.

Check our online Help Center at <http://support.iconproaudio.com/hc/en-us>, for information, knowledge, and downloads such as:

1. FAQ
2. Download
3. Learn More
4. Forum

Very often you will find solutions on these pages. If you don't find a solution, create a support ticket at our online Help Center at the link below, and our technical support team will assist you as soon as we can. Navigate to

<http://support.iconproaudio.com/hc/en-us>. and then sign in to submit a ticket. As soon as you have submitted an inquiry ticket, our support team will assist you in resolving the problem with your ICON ProAudio device as soon as possible.

To send defective products for service:

1. Ensure the problem is not related to operation errors or external system devices.
2. Keep this owner's manual. We don't need it to repair the unit.
3. Pack the unit in its original packaging including the end card and box. This is very important. If you have lost the packaging, please make sure you have packed the unit properly. ICON is not responsible for any damage that occurs due to non-factory packing.
4. Ship to the ICON tech support center or the local return authorization. See our service centers and distributor service points at the link below:
 - If you are located in the US
 - **Send the product to** North America
 - Mixware, LLC – U.S. Distributor
 - 11070 Fleetwood Street – Unit F. Sun Valley, CA 91352; USA
 - **Tel:** (818) 578 4030
 - **Contact:** www.mixware.net/help. If you are located in Europe
 - **Send the product to** Sound Service GmbH European
 - Headquarter Moriz-Seeler-Straße 3D-12489 Berlin
 - **Telephone:** +49 (0)30 707 130-0
 - **Fax:** +49 (0)30 707 130-189
 - **E-Mail:** info@sound-service.eu.
 - If you are located in Hong Kong
 - **Send the product to ASIA OFFICE:** Unit F, 15/F., Fu Cheung Centre,
 - No. 5-7 Wong Chuk Yeung Street, Fotan,
 - Sha Tin, N.T., Hong Kong.
 - **Tel:** (852) 2398 2286
 - **Fax:** (852) 2789 3947
 - **Email:** info.asia@icon-global.com.
 - <https://manual-hub.com/>.
5. For additional update information please visit our website at: www.iconproaudio.com.



6. www.iconproaudio.com.

7. 25/37/49/61/88-note velocity-sensitive piano-style keys USB MIDI controller keyboard


CAUTION

- RISK OF ELECTRIC SHOCK
- DO NOT OPEN
- RISQUE DE CHOC ELECTRIQUE
- NE PAS OUVRIR
 - **CAUTION:** TO REDUCE THE RISK OF ELECTRIC SHOCK
- DO NOT REMOVE COVER (OR BACK)
- NO USER-SERVICEABLE PARTS INSIDE
- REFER SERVICING TO QUALIFIED PERSONNEL

The lightning flashes with an arrowhead symbol within an equilateral triangle. is intended to. alert the user to the presence of uninsulated dangerous voltage within the product s enclosure, that may be of sufficient magnitude to electric shock to persons.



Documents / Resources

	<p>ICON PRO AUDIO I-KEYBOARD NANO USB MIDI Controller Keyboard [pdf] User Manual I-KEYBOARD NANO, I-KEYBOARD NANO USB MIDI Controller Keyboard, USB MIDI Controller Keyboard, MIDI Controller Keyboard, Controller Keyboard, Keyboard</p>
---	---

References

- [Domain im Kundenauftrag registriert](#)
- [Icon Pro Audio \(@iconproaudio\) • Instagram photos and videos](#)
- [Help - Mixware](#)
- [Search - Manual-Hub.com](#)