

**ICOM**  
VE-PG4 Radio  
System



# ICOM VE-PG4 Radio System Instructions

[Home](#) » [ICOM](#) » ICOM VE-PG4 Radio System Instructions 

## Contents

- 1 ICOM VE-PG4 Radio System
- 2 Explicit definitions
- 3 Precautions
- 4 FCC Information
- 5 Disposal
- 6 About CE and DOC
- 7 Supplied accessories
- 8 Other requirements
- 9 Dimensions
- 10 Connections
- 11 Initializing the RoIP Gateway
- 12 The initial login
- 13 Documents / Resources
  - 13.1 References
- 14 Related Posts

**ICOM**

**ICOM VE-PG4 Radio System**



## Important

### SAVE THESE INSTRUCTIONS

These instructions contain basic (important) operating instructions for the VE-PG4. For Advanced features and instructions, see the manuals on the Icom website. <https://www.icomjapan.com/support/>

- INSTALLATION GUIDE describes how to set up the VE-PG4 system, maintenance, specifications, and so on.
- OPERATING GUIDE describes the details of each setting menu item.

## Explicit definitions

WORD	DEFINITION
<b>R WARNING!</b>	Personal injury, fire hazard, or electric shock may occur.
<b>CAUTION</b>	Equipment damage may occur.
<b>NOTE</b>	Recommended for optimum use. No risk of personal injury, fire, or electric shock.

Icom is not responsible for the destruction, damage to, or performance of any Icom or non-Icom equipment if the malfunction is because of:

- Force majeure, including, but not limited to, fires, earthquakes, storms, floods, lightning, or other natural disasters, disturbances, riots, war, or radioactive contamination.
- The use of Icom equipment with any equipment that is not manufactured or approved by Icom.

Icom and the Icom logo are registered trademarks of Icom Incorporated (Japan) in Japan, the United States, the United Kingdom, Germany, France, Spain, Russia, Australia, New Zealand, and/or other countries. All other products or brands are registered trademarks or trademarks of their respective holders.

Thank you for choosing this Icom product. READ ALL INSTRUCTIONS carefully and completely before using this product.

## Precautions

### For the RoIP Gateway

- **WARNING!** NEVER use other than the specified AC adapter. This may result in an electrical shock, cause a fire, or damage the RoIP Gateway.
- **WARNING!** NEVER use non-specified accessories or options. This may result in an electrical shock, cause a fire, or damage the RoIP Gateway.
- **WARNING!** NEVER connect the AC adapter to other than the [DC] jack on the rear panel. This may result in an electrical shock, cause a fire, or damage the RoIP Gateway.
- **WARNING!** NEVER disassemble, modify, or repair the RoIP Gateway. This may result in an electrical shock, cause a fire, or damage the RoIP Gateway.
- **WARNING!** NEVER install the RoIP Gateway in a wet place or outside. This may result in an electrical shock, cause a fire, or damage the RoIP Gateway.
- **WARNING!** NEVER operate or touch the RoIP Gateway with wet hands. This may result in an electrical shock or damage to the RoIP Gateway.
- **WARNING!** NEVER connect the ground terminal to a gas or electric pipe. This may result in an electrical shock or cause a fire.
- **WARNING!** NEVER use the RoIP Gateway during a thunder and lightning storm. Using it may result in an electrical shock, cause a fire, or damage the RoIP Gateway. Always disconnect the AC adapter before any storm.
- **WARNING!** Immediately disconnect the AC adapter if the RoIP Gateway emits an abnormal odor, sound, or smoke. Contact your Icom dealer or distributor for advice.
- **WARNING!** NEVER put the RoIP Gateway in any unstable place (such as on a slanted surface or vibrated place). This may cause injury and/or damage to the RoIP Gateway.
- **CAUTION:** NEVER install the RoIP Gateway in a place without air vents. Heat dissipation may be reduced, and this could damage the RoIP Gateway.
- **CAUTION:** Always place the RoIP Gateway in a secure place to avoid inadvertent use by unauthorized persons.
- **CAUTION:** DO NOT use or place the RoIP Gateway in areas with temperatures below 0°C (+32°F) or above +40°C (+104°F).
- **CAUTION:** DO NOT place the RoIP Gateway in direct sunlight. This could damage the RoIP Gateway.
- **CAUTION:** DO NOT use the RoIP Gateway in strong magnetic fields or an area with high static electricity. This could damage the RoIP Gateway.
- **CAUTION:** Disconnect the AC adapter when you do not use the RoIP Gateway for a long period.
- **CAUTION:** DO NOT use harsh solvents such as benzene or alcohol to clean the RoIP Gateway, as they can damage the RoIP Gateway's surfaces. If the RoIP Gateway becomes dusty or dirty, wipe it clean with a dry, soft cloth.

## **PRECAUTIONS (Continued)**

**CAUTION:** Use only the specified cable to connect a transceiver or repeater to the RoIP Gateway. Using another cable could cause damage to the RoIP Gateway or the transceiver or repeater.

### **For the AC adapter**

- **WARNING!** NEVER use other than the RoIP Gateway. This may result in an electrical shock, cause a fire, or damage the AC adapter.

- **WARNING!** Connect the adapter to an outlet between 100 V and 240 V AC. Otherwise, this may result in an electrical shock, cause a fire, or damage the AC adapter.
- **WARNING!** NEVER install the AC adapter in a wet place that is outside or near the humidifier. This may result in an electrical shock, cause a fire, or damage the AC adapter.
- **WARNING!** NEVER put something heavy on the AC adapter cable. This may result in an electrical shock, cause a fire, or damage the AC adapter.
- **WARNING!** NEVER modify, bend by force, twist, pull, or heat the AC adapter's cable. This may result in an electrical shock, cause a fire, or damage the AC adapter.
- **WARNING!** NEVER touch the AC adapter with wet hands. This may result in an electrical shock or damage to the AC adapter.
- **WARNING!** NEVER use the AC adapter when it can not closely inserted into the AC outlet. This may result in an electrical shock, cause a fire, or damage the AC adapter.
- **WARNING!** Use and place the AC adapter and connection cable to avoid inadvertent use by children. This may result in an electrical shock or cause injury.

### Other precautions

- When operating the PC or external device, see those instruction manuals for details.
- The supplied AC adapter may at some time need to be replaced, depending on its life expectancy. The life of an AC adaptor differs according to the environment or condition in which the adaptor is used. We recommend replacement when it has been used for approximately 5 years (When used under the ambient temperature of 25°C, 77°F). Contact your local dealer for details.
- RoIP Gateway supports only IPv4. IPv6 is not supported.

### CAUTION for the magnetic legs

The supplied magnetic legs contain strong magnets.

- Be careful not to pinch your fingers with the magnet.
- Do not bring the magnet close to or hit the implant site, such as a cardiac pacemaker. It could cause an unexpected operation of electronic medical devices and could be dangerous to life.
- Keep the magnet away from such as watches, IC cards, compasses, and precision instruments.

### FCC Information

**CAUTION:** Changes or modifications to this equipment, not expressly approved by Icom Inc., could void your authority to operate this device under FCC regulations.

This equipment has been tested and found to comply with the limits for a Class B digital device, under part 15 of the FCC Rules. These limits are designed to provide reasonable protection against harmful interference in a residential installation. This equipment generates, uses, and can radiate radio frequency energy and, if not installed and used by the instructions, may cause harmful interference to radio communications. However, there is no guarantee that interference will not occur in a particular installation. If this equipment does cause harmful interference to radio or television reception, which can be determined by turning the equipment off and on, the user is encouraged to try to correct the interference by one or more of the following measures:

- Reorient or relocate the receiving antenna.

- Increase the separation between the equipment and the receiver.
- Connect the equipment to an outlet on a circuit different from that to which the receiver is connected.
- Consult the dealer or an experienced radio/TV technician for help.

## Disposal



The crossed-out wheeled bin symbol on your product, literature, or packaging reminds you that in the European Union, all electrical and electronic products, batteries, and accumulators (rechargeable batteries) must be taken to designated collection locations at the end of their working life. Do not dispose of these products as unsorted municipal waste. Dispose of them according to the laws in your area.

## About CE and DOC



Hereby, Icom Inc. declares that the versions of VE-PG4 which have the “CE” symbol on the product, comply with the essential requirements of the Radio Equipment Directive, 2014/53/EU, and the restriction of the use of certain hazardous substances in electrical and electronic equipment Directive, 2011/65/EU. The full text of the EU declaration of conformity is available at the following internet address:

<https://www.icomjapan.com/support/> These versions also comply with the essential requirements of the Battery Regulation, (EU) 2023/1542.

## About UKCA DOC

To obtain the UKCA Declaration of Conformity, please contact Icom UK Limited by email at [info@icomuk.co.uk](mailto:info@icomuk.co.uk) or call + 44(0) 1227 741741.

## Supplied accessories

- Power adapter .....1
- Clamp .....1
- Magnetic leg ..... 4
- Screw ..... 4
- Connector ..... 24
- Cushion sheet ..... 1
- Antenna ..... 2
- Antenna mount base ..... 2
- This leaflet (For maintenance)
  - Refer to the web manual for transceivers and cables that are usable with the RoIP Gateway.

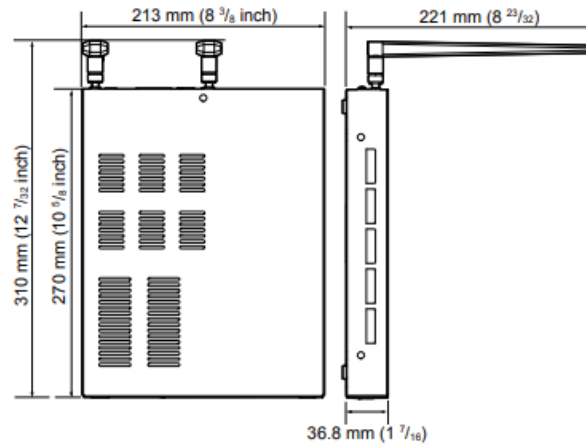
## Other requirements

- LAN cable (User supplied)
- Grounding cable (User supplied)
- PC for the setup operation

- Icom transceiver
- Connection cable for the transceiver

You can install the VE-PG4 into the 19-inch rack using an optional MBF-6 MOUNTING BRACKET. See the manual supplied with the bracket for details on the installation.

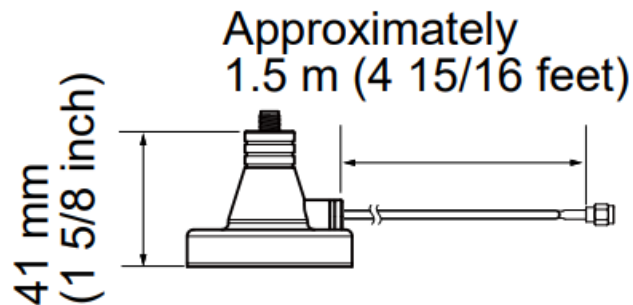
## Dimensions



## About the antenna mount base

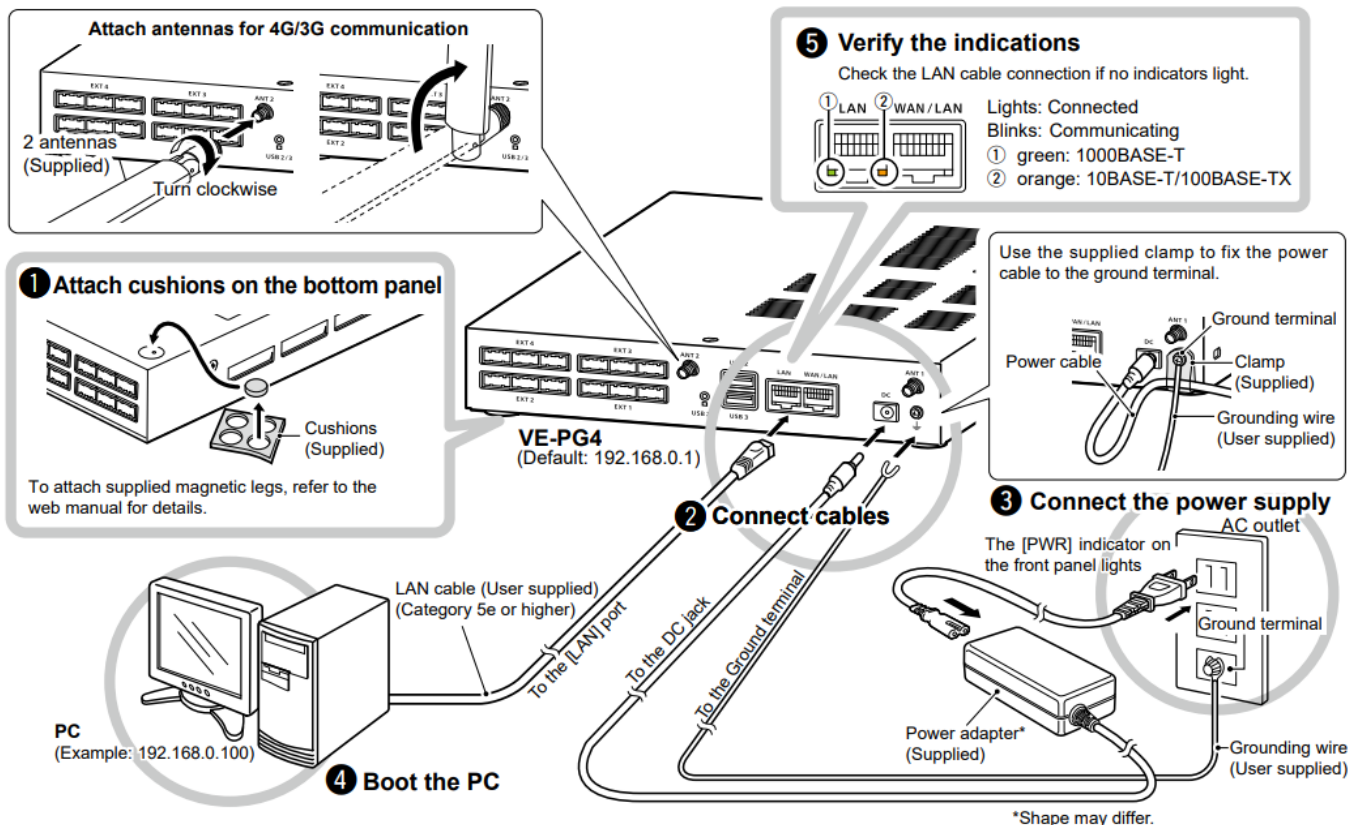
Use the supplied antenna mount base to place the antenna in a better location.

- Attach the mount base to a steel rack using the magnet on the bottom side. Refer to the web manual for details.



## Connections

Disconnect the PC from the network, before connecting cables.



## IP address for PC

The RoIP Gateway's IP address is set to "192.168.0.1," and the DHCP server to "Disable" as the default. Set the PC's IP address to 192.168.0.x network (Example: "192.168.0.100"). See the PC's instruction manual for the IP address setting details.

## WARNING!

To prevent electrical shock, television interference (TVI), broadcast interference (BCI), and other problems, ground the RoIP Gateway through the ground terminal. NEVER connect the ground terminal to a gas or electric pipe. This may result in an electrical shock, or cause a fire.

## Initializing the RoIP Gateway

If you cannot access the Controller Setting screen, such as when you lose your IP address or password, you will not be able to access the RoIP Gateway Setting screen unless you reset the RoIP Gateway to factory defaults.

- Initializing clears all the settings. See the INSTALLATION GUIDE for resetting on the Setting screen.

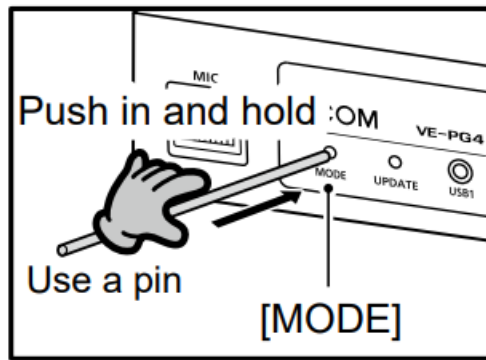
1. Disconnect all cables from the RoIP Gateway except for the power adapter.

2. Hold down [MODE] until all indicators on the front panel light orange.

- When the initialization has been completed, the [PWR] indicator lights green.

**CAUTION:** DO NOT turn OFF the RoIP Gateway until the [PWR] indicator lights green.

3. After the initializing, reset the RoIP Gateway's IP address, operating mode, and so on.



## The initial login

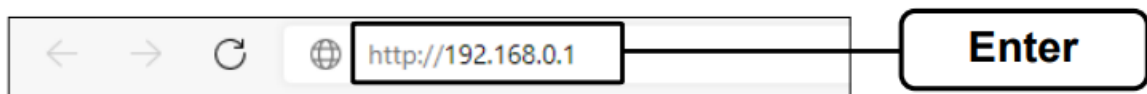
### Accessing the setting screen

You can access the Setting screen of the RoIP Gateway using a web browser on the PC.

### About web browsers

- Microsoft Edge (Chromium-based) is a recommended web browser.
- Enable JavaScript® and set to accept cookies on your web browser to correctly display the Setting screen.
- The Setting screen may not be correctly displayed, depending on the browser.

1. Enter the IP address of the RoIP Gateway “http://192.168.0.1/” (as the default) into the address bar of your web browser, and then press the [Enter] key.



- The Login Authentication screen is displayed.

2. Enter the username “admin” (fixed username) and the default password “admin,” and then click <Sign in>.



- The Password screen is displayed.

3. Enter a new password into both “New Password” and “New Password (Confirm),” and then click <Apply>.



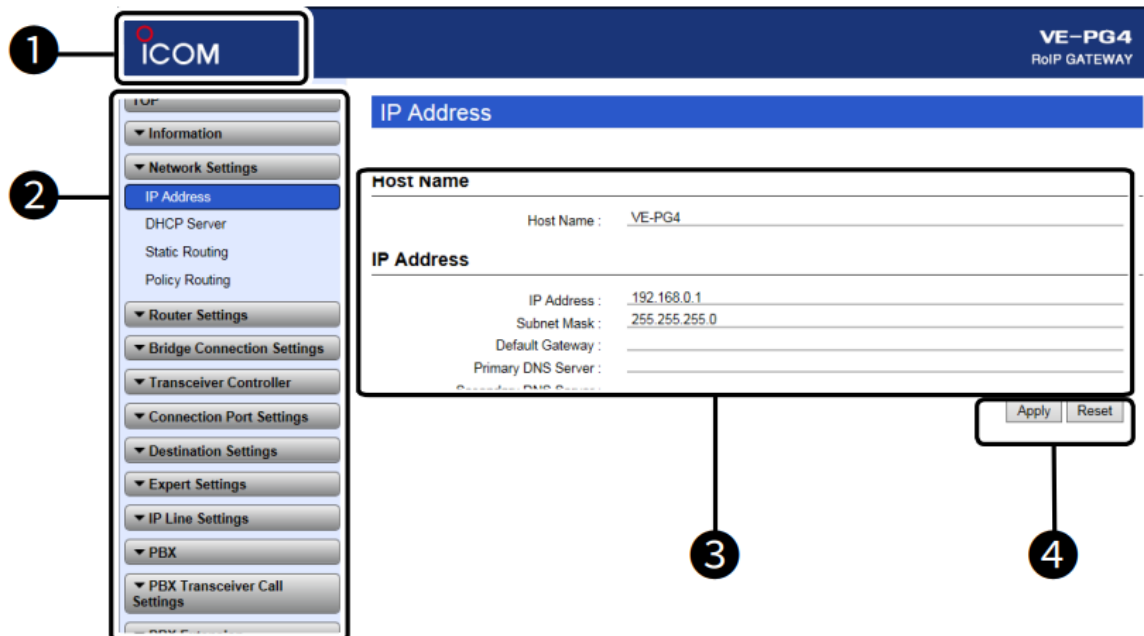
- The password should be 8 to 31 characters, numbers, and letters (case sensitive.)
- You can check the entered characters by clicking the eye icon to the right.
- The Login Authentication screen is displayed.

- For details on the Setting screen operation, see the PDF manuals supplied on the Icom website.

#### To prevent unauthorized access:

- Choose a password that is not easy to guess.
- Use numbers, characters, and letters (both lower and upper case).
- See the OPERATING GUIDE for details on setting the password.

#### About the setting screen



### Link to the Icom website

Click the Icom logo to open the Icom website if your PC is connected to the Internet.

### Setting menu

Displays the window name list. When you click on a name, a list drops down where you select a desired setting item.

### Setting window

Displays the settings and values when you click a setting item.

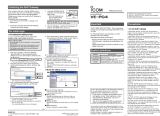
### Setting buttons

Saves or cancels the entered settings.

### Icom Inc.

1-1-32 Kamiminami, Hirano-ku, Osaka 547-0003, Japan Jul. 2024 A7487W-1EX-3 Printed in Japan © 2019–2024 Icom Inc.

## Documents / Resources

	<p><a href="#">ICOM VE-PG4 Radio System</a> [pdf] Instructions VE-PG4 Radio System, VE-PG4, Radio System, System</p>
---	--

## References

- [User Manual](#)

[Manuals+](#), [Privacy Policy](#)

This website is an independent publication and is neither affiliated with nor endorsed by any of the trademark owners. The "Bluetooth®" word mark and logos are registered trademarks owned by Bluetooth SIG, Inc. The "Wi-Fi®" word mark and logos are registered trademarks owned by the Wi-Fi Alliance. Any use of these marks on this website does not imply any affiliation with or endorsement.