

iCOM RS-MS3W Terminal Mode Access Point Mode Software Instructions

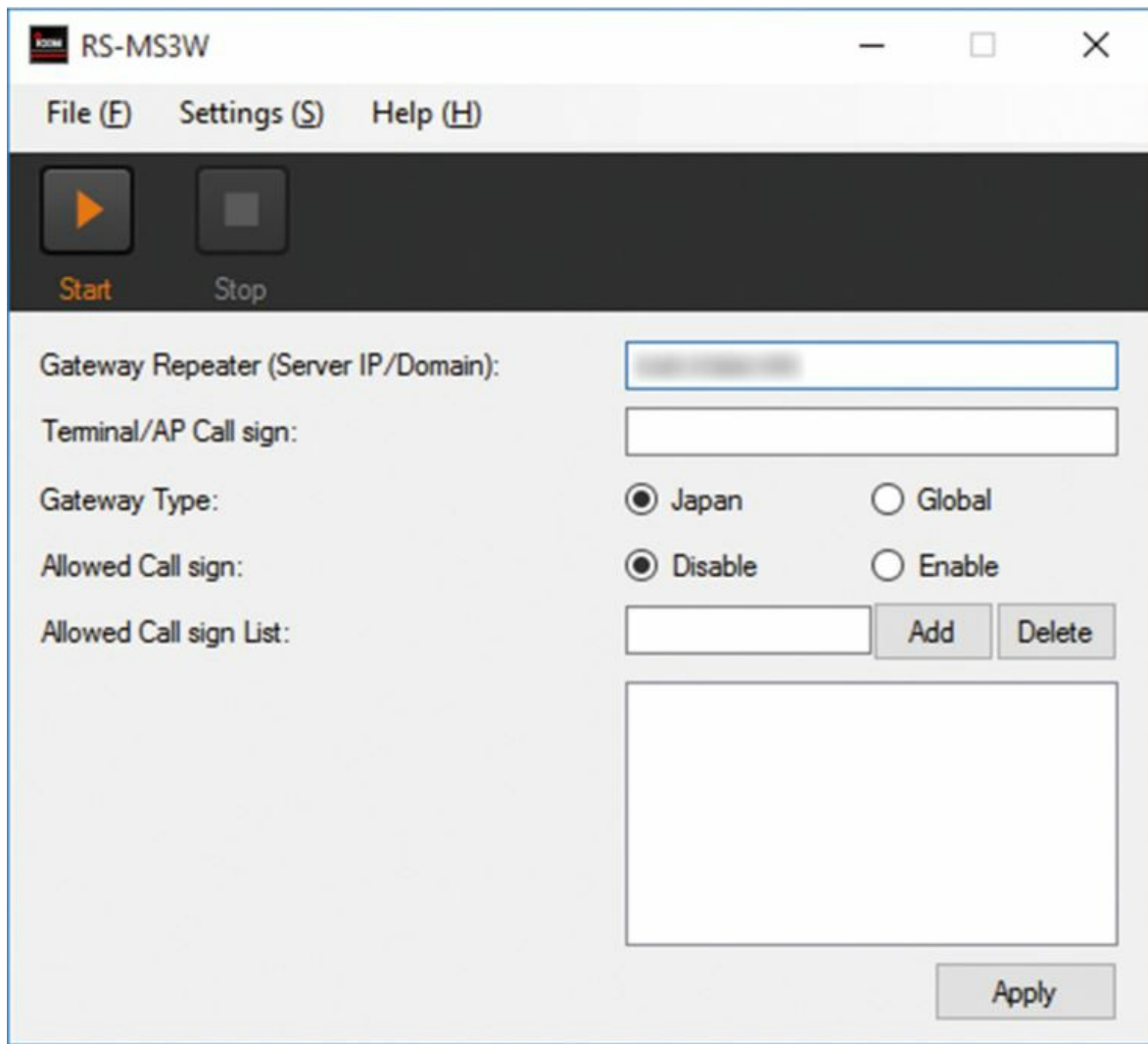
[Home](#) » [ICOM](#) » iCOM RS-MS3W Terminal Mode Access Point Mode Software Instructions 

Contents

- 1 iCOM RS-MS3W Terminal Mode Access Point Mode Software
- 2 Product Information
- 3 SYSTEM REQUIREMENTS
- 4 COMPATIBLE TRANSCEIVERS AND CABLES
- 5 INSTALLATION
- 6 MAIN SCREEN
- 7 Documents / Resources
 - 7.1 References



iCOM RS-MS3W Terminal Mode Access Point Mode Software



Product Information

Specifications

- **USB port:** USB 1.1 or USB 2.0

System Requirements

- To use the RS-MS3W software, the following are required:
 - **USB port:** USB 1.1 or USB 2.0

Note: Before using this software application, you must have your call sign registered to the gateway server that has the RS-RP3C installed. Please consult the gateway repeater administrator for more details.

Frequently Asked Questions

- **Q:** What are the system requirements for using RS-MS3W?
 - **A:** The system requires a USB port (USB 1.1 or USB 2.0).
- **Q:** How do I register my call sign to the gateway server?
 - **A:** Before using RS-MS3W, you must have your call sign registered to the gateway server that has the RS-RP3C installed. Please contact the gateway repeater administrator for more details.

- **Q:** How can I check the COM port number that the data communication cable is connected to?
 - **A:** On the main screen of the RS-MS3W software, click on “Com Port” to display the COM port number.
Refer to the data cable’s installation guide on the Icom website for more information.
- **Q:** How can I uninstall the RS-MS3W software?
 - **A:** To uninstall, use the “Apps & features” in the System menu. Go to Start > Settings > System > Apps & features and locate RS-MS3W. Click on it and select “Uninstall”.

Thank you for choosing this Icom product.

The RS-MS3W is a software application for Windows, designed for using the DV Gateway function of the Icom D-STAR® transceivers. These instructions are made based on using Windows 10.

READ ALL INSTRUCTIONS carefully and completely before using this product.

SYSTEM REQUIREMENTS

The following are required to use the RS-MS3W. (As of March 2019)

Operating system

- Microsoft® Windows® 10 (32/64 bit)
- Microsoft® Windows® 8.1 (32/64 bit)
- Microsoft® Windows® 7 (32/64 bit)

USB port

- A USB 1.1 or USB 2.0

NOTE: Before using this software application, you must have your call sign registered to the gateway server that has the RS-RP3C installed.

Ask the gateway repeater administrator for details.

COMPATIBLE TRANSCEIVERS AND CABLES

The following transceivers are compatible with the RS-MS3W. (As of March 2019)

- ID-31A PLUS/ID-31E PLUS
- ID-51A (PLUS2)/ID-51E (PLUS2)
- ID-4100A/ID-4100E
- IC-9700

The OPC-2350LU data cable is needed to connect the transceiver to the RS-MS3W.

NOTE: See “About the DV Gateway function**” on the Icom website for connection details.

<http://www.icom.co.jp/world/support/download/manual/>

* When using the IC-9700, see the transceiver's Advanced manual.

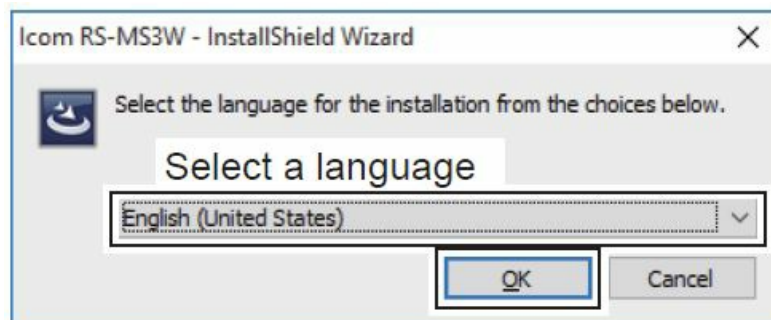
INSTALLATION

To install:

- Confirm Windows has completed its startup.
- Log in as the administrator.
- Be sure no other applications are running.

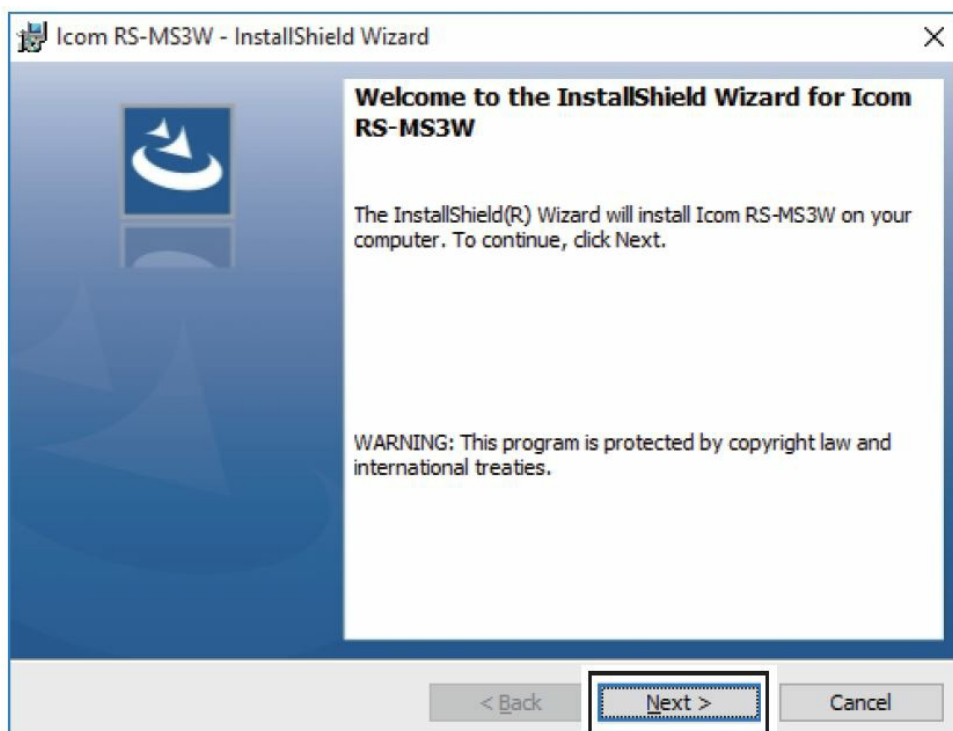
These instructions are based on using Microsoft® Windows® 10.

1. Unzip the file downloaded from the Icom website. (<http://www.icom.co.jp/world/support/download/firm/>)
2. Double click the executable file in the unzipped folder.
 - When “User Account Control” is displayed, click <Yes> to continue.



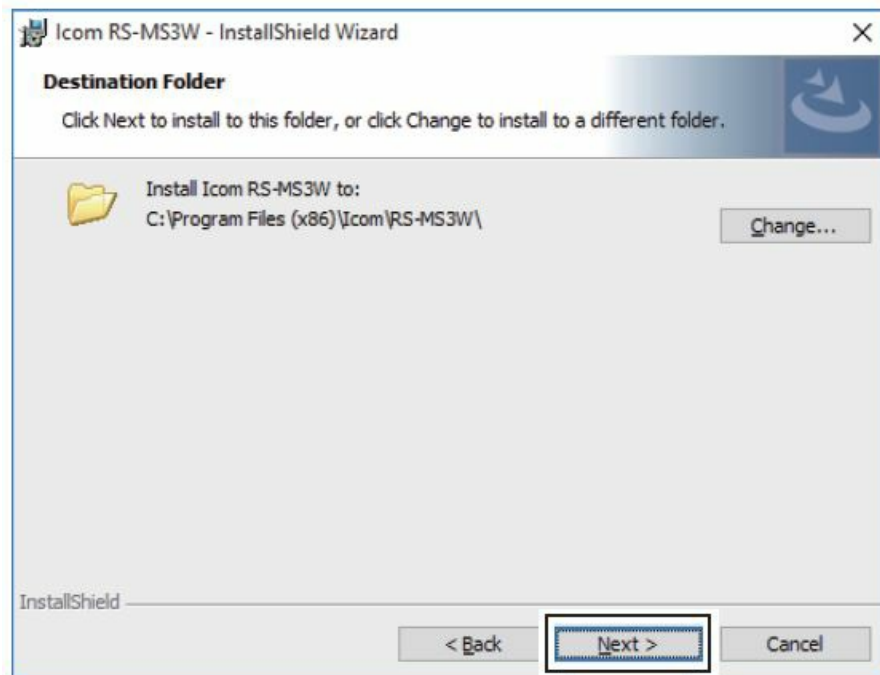
Click

3. Select a language, and then click <OK>.



Click

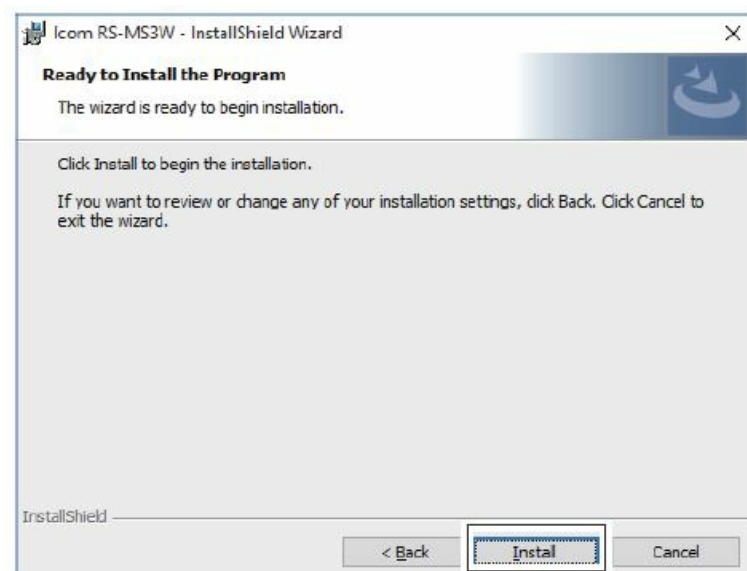
4. Click <Next >>.



Click

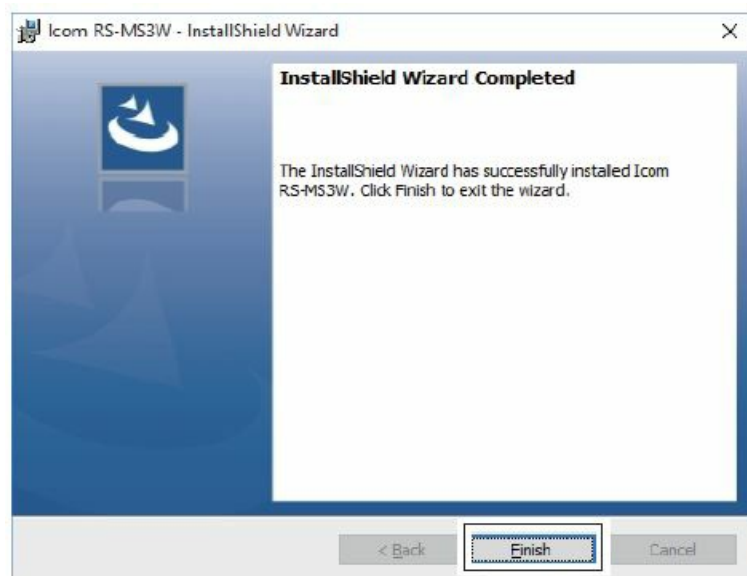
5. Click <Next >>.

- To select another destination folder, click <Change...> before clicking <Next >>.



Click

6. Click <Install>.



Click

7. Click <Finish>.

Attention

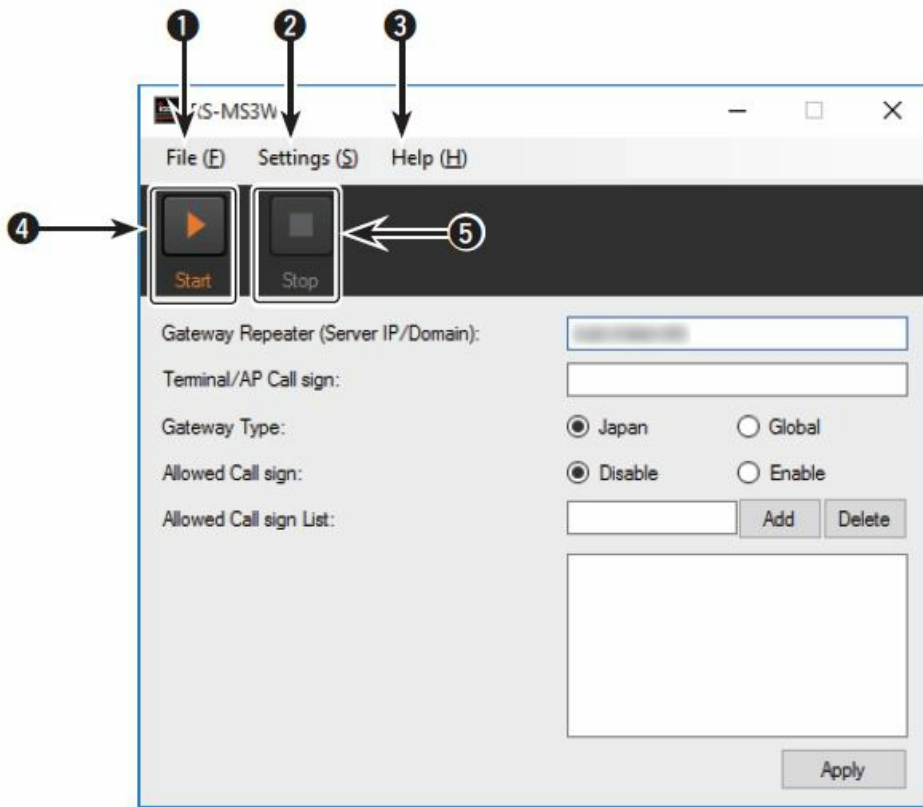


- The “RS-MS3W” file is created in the Windows Start menu, and a shortcut icon is created on the desktop.
- Double click the icon to open the RS-MS3W.

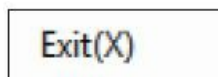
NOTE

- To uninstall, use the “Apps & features” in the “System” menu.
- To get started, click on Start > Settings > System > Apps & features.

MAIN SCREEN



1. File

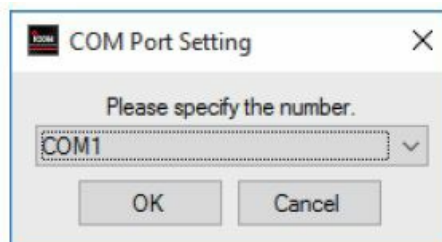


- **Exit:** Closes the application.

2. Settings

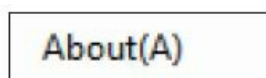


- **Com Port:** Displays the COM port number that the data communication cable is connected to.

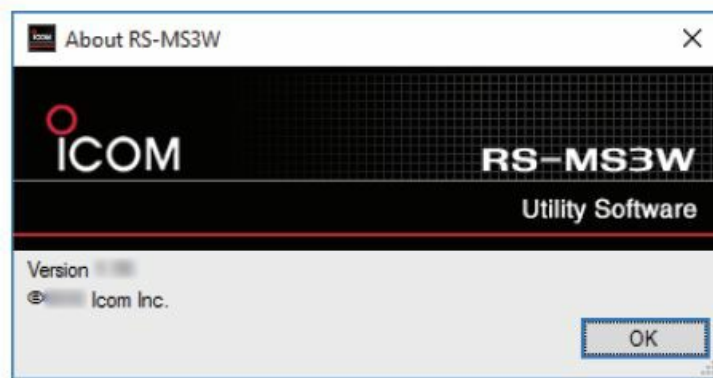


- **Note:** Click “▼” to display the COM ports on a drop-down list.
- See the data cable’s “Installation Guide” on the Icom website for details on checking the COM port number.
- **TIP:** You can access the data cable’s Installation Guide by entering the cable name on the URL below. <http://www.icom.co.jp/world/support/download/manual/>

3. Help



- **About:** Opens the information window and displays the version number.

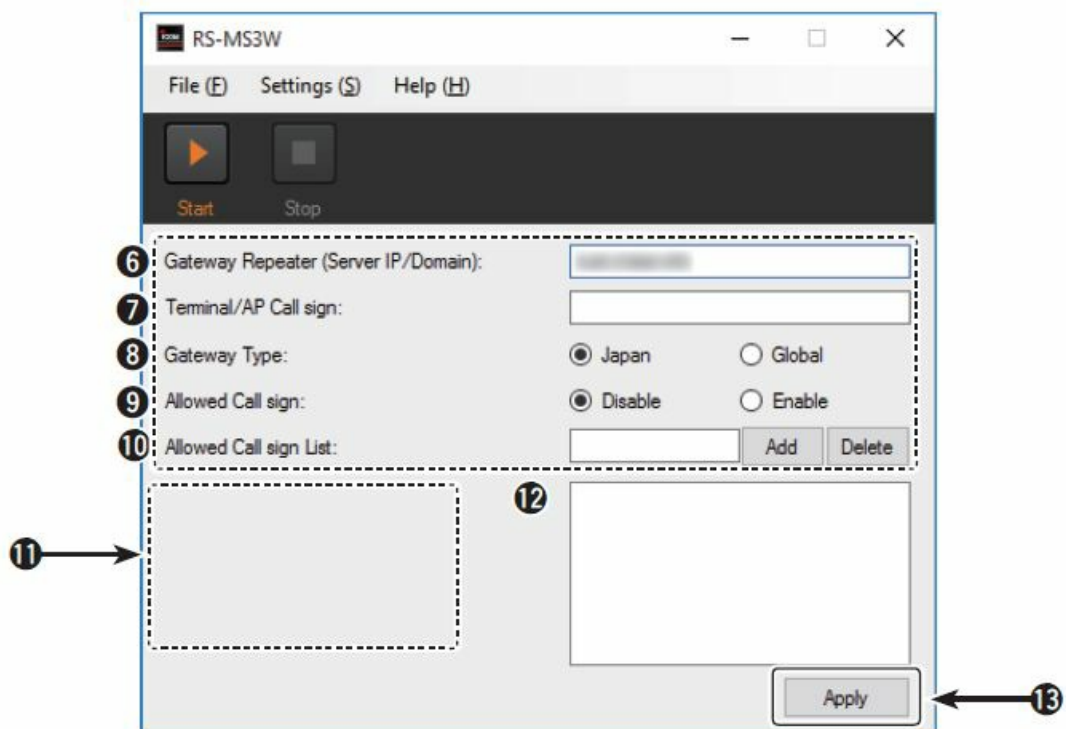


4. Start

- Click to start the connection to the destination.

5. Stop

- Click to stop the connection to the destination.



6. Gateway Repeater (Server IP/Domain)

- Enter the RS-RP3C's gateway repeater address or domain name.
- **Tip:** The address consists of up to 64 characters.
- **NOTE:** You must have your call sign registered to the gateway server that has the RS-RP3C installed. Ask the gateway repeater administrator for details.

7. Terminal/AP Call sign

Enter the Terminal/AP call sign that is registered as the access point on the RS-RP3C's Personal Information screen.

- The call sign consists of 8 characters.
 - Enter My Call sign of the connected transceiver.
 - Enter a space for the 7th character.
 - Enter a desired ID suffix between A to F for the 8th character.
- If the call sign is entered in lowercase letters, the letters are automatically changed to uppercase letters when you click <Apply>.

8. Gateway Type

- Select the gateway type.
 - **Tip:** Select “Global” when operating outside of Japan.

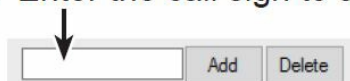
9. Allowed Call sign

- Select to use the call sign restriction for the Access Point mode. When ‘Enable’ is selected, this allows the station of the assigned call sign to transmit through the Internet.
- **Disabled:** Allow any call signs to transmit.
- **Enabled:** Allow only the call sign displayed in 12 to transmit.
- **Tip:** When using the Terminal mode, select ‘Disabled.’

10. Allowed Call sign List

- Enter the call sign of the stations are allowed to transmit through the internet while “Enabled” is selected for 9 “Allowed Call sign.”
- You can add up to 30 call signs.
- Adding a call sign

1. Enter the call sign to allow transmitting.

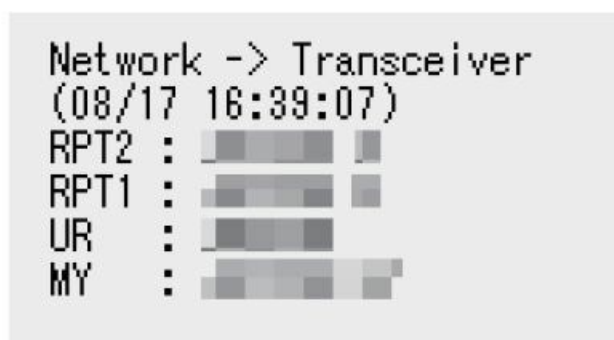


2. Click <Add>.

- Deleting a call sign
 1. In the call sign field 12, click on the call sign to delete.
 - The selected call sign is displayed in the entry field.
 2. Click <Delete>.

11. Call sign information field

- Displays the information of call signs that are transmitted from the PC or received from the Internet.
- (Example)



12. Call sign field

- Displays the call signs that are allowed to transmit while “Enabled” is selected for 9 “Allowed Call sign.”

13. Apply button

Click to save the entered data or settings.

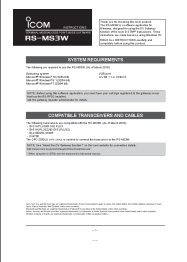
- The button turns red when you have changed the data or settings.
- The changes are not saved until you click this button.

1-1-32 Kamiminami, Hirano-ku, Osaka 547-0003, Japan
© 2016–2019 Icom Inc.

Icom, Icom Inc. and the Icom logo are registered trademarks of Icom Incorporated (Japan) in Japan, the United States, the United Kingdom, Germany, France, Spain, Russia, Australia, New Zealand, and/or other countries. Microsoft and Windows are registered trademarks of Microsoft Corporation in the United States and/or other countries.

Adobe, Acrobat, and Reader are either registered trademarks or trademarks of Adobe Systems Incorporated in the United States and/or other countries.
All other products or brands are registered trademarks or trademarks of their respective holders.

Documents / Resources

	<p>iCOM RS-MS3W Terminal Mode Access Point Mode Software [pdf] Instructions RS-MS3W Terminal Mode Access Point Mode Software, RS-MS3W, Terminal Mode Access Point Mode Software, Access Point Mode Software, Point Mode Software, Mode Software, Software</p>
---	---

References

-  [Manual-Hub.com - Free PDF manuals!](#)
-  [Instruction Manual / Guides | Support | Icom Inc.](#)
-  [Manual-Hub.com - Free PDF manuals!](#)
- [User Manual](#)

[Manuals+.](#) [Privacy Policy](#)

This website is an independent publication and is neither affiliated with nor endorsed by any of the trademark owners. The "Bluetooth®" word mark and logos are registered trademarks owned by Bluetooth SIG, Inc. The "Wi-Fi®" word mark and logos are registered trademarks owned by the Wi-Fi Alliance. Any use of these marks on this website does not imply any affiliation with or endorsement.