


iclever WM-101 Wireless Mouse



iclever WM-101 Wireless Mouse User Manual

[Home](#) » [iclever](#) » iclever WM-101 Wireless Mouse User Manual 

Contents

- [1 iclever WM-101 Wireless Mouse](#)
- [2 Product Information](#)
- [3 Package Contents](#)
- [4 Diagram](#)
- [5 Specification](#)
- [6 Operation](#)
- [7 FCC Statement](#)
- [8 Declaration of Conformity](#)
- [9 Documents / Resources](#)
 - [9.1 References](#)



iclever WM-101 Wireless Mouse



Product Information

Specifications

- **Model:** WM-101
- **Frequency Band:** 2408MHz-2474MHz

FAQ

- **Q:** Are the buttons of the mouse compatible with Mac OS X?
 - **A:** No, the buttons of the mouse are not compatible with Mac OS X.

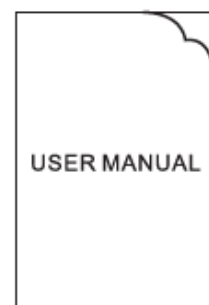
Package Contents



x1

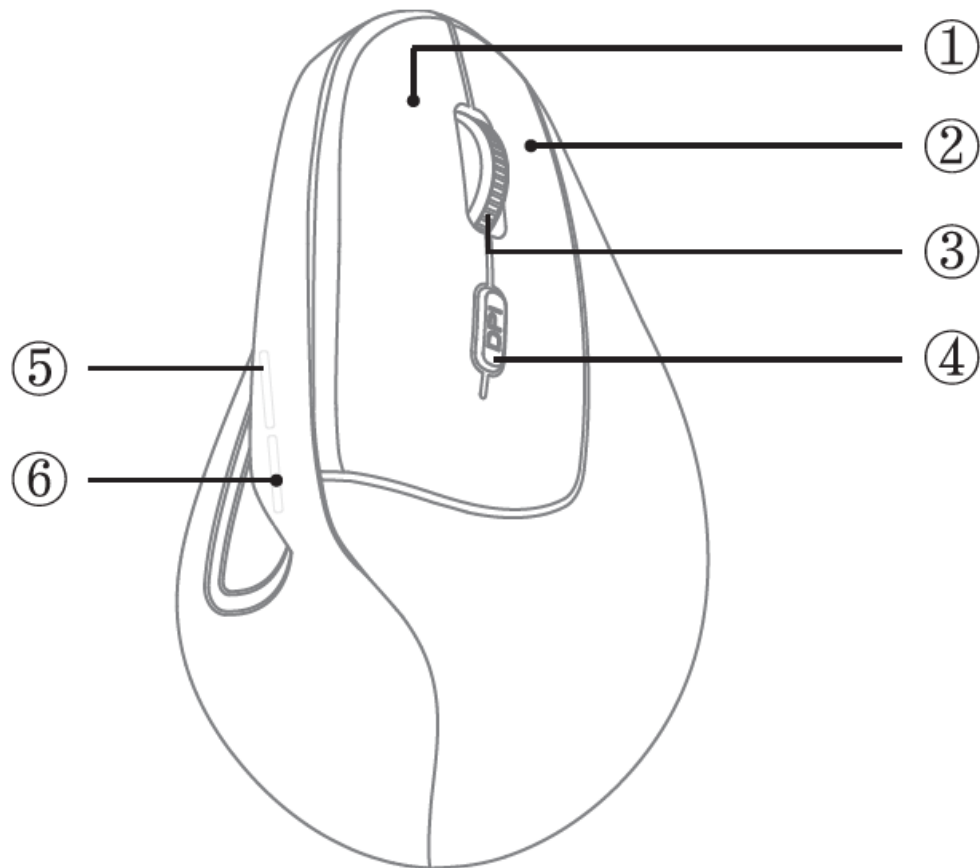


x1



x1

Diagram

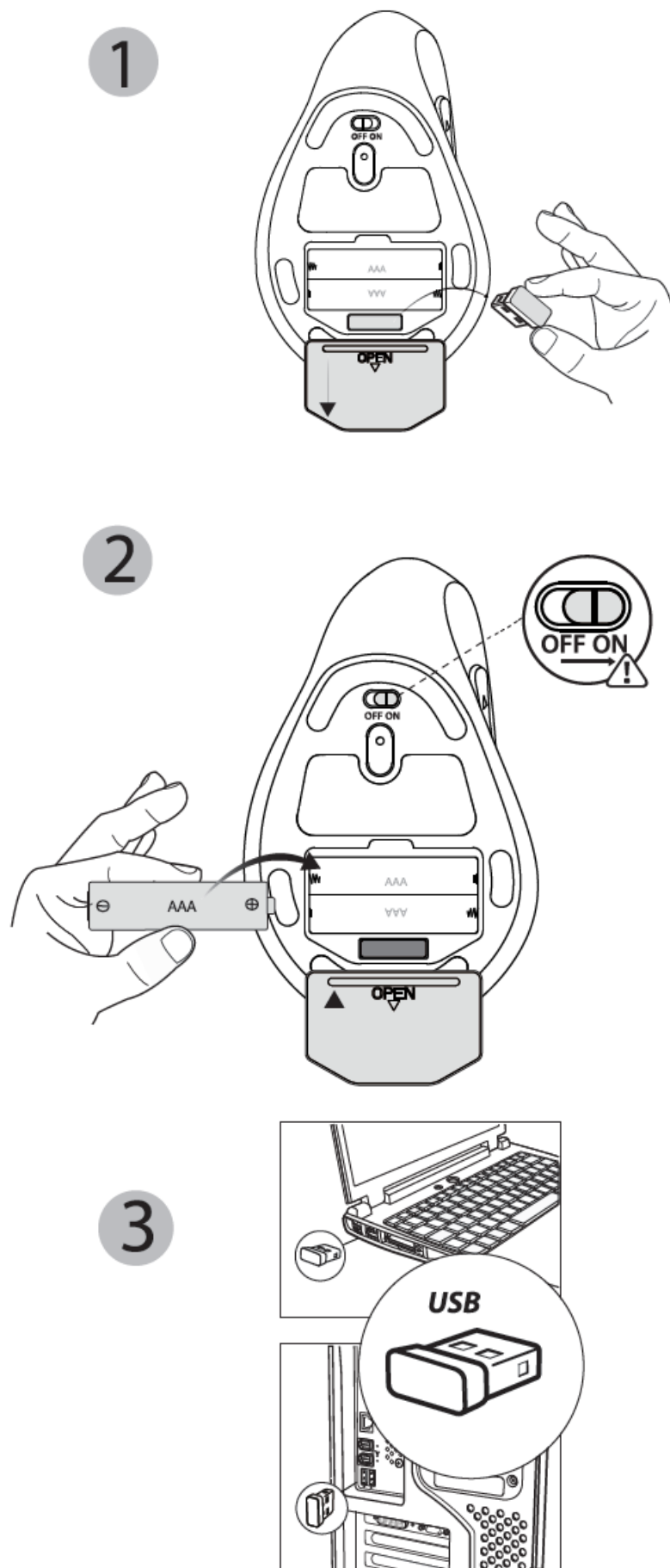


1. Left Button
2. Right Button
3. Scroll Button
4. DPI Button
5. Page Up Button
6. Page Down Button

Specification

- **Size:** 128*78*72 mm
- **Net Weight:** 90 \pm 5g
- **Wireless Operation Range:** 15m
- **Working Voltage:** 3V
- **Working Current:** 15mA
- **DPI Adjustment:** 1000-1600-2000-2400
- **Compatibility:**
 - **Windows:** 2000/ME/XP(X64)/ Vista /7/8/10;
 - **Mac OS X** 10.4 or above
 - **Note:** buttons of 5,6 are not working in Mac OS X.
- **Frequency band:** 2408MHz-2474MHz
- **Maximum transmission power:** 0 dBm

Operation



FCC Statement

Changes or modifications not expressly approved by the party responsible for compliance could void the user's

authority to operate the equipment. This equipment has been tested and found to comply with the limits for a Class B digital device, pursuant to Part 15 of the FCC Rules. These limits are designed to provide reasonable protection against harmful interference in a residential installation. This equipment generates uses and can radiate radio frequency energy and, if not installed and used in accordance with the instructions, may cause harmful interference to radio communications. However, there is no guarantee that interference will not occur in a particular installation. If this equipment does cause harmful interference to radio or television reception, which can be determined by turning the equipment off and on, the user is encouraged to try to correct the interference by one or more of the following measures:

- Reorient or relocate the receiving antenna.
- Increase the separation between the equipment and receiver.
- Connect the equipment into an outlet on a circuit different from that to which the receiver is connected.
- Consult the dealer or an experienced radio/TV technician for help.

This device complies with part 15 of the FCC rules. Operation is subject to the following two conditions

1. this device may not cause harmful interference.
2. this device must accept any interference received, including interference that may cause undesired operation.

Contact

- support@iclever.com
- support@iclever.co.jp


Declaration of Conformity

- Hereby, [Thousandshores Deutschland GmbH] declares that the radio equipment type [Wireless Mouse WM-101] is in compliance with Directive 2014/53/EU.
- The full text of the EU declaration conformity is available at the following internet address:
<http://files.iclever.com/wm-101-eu-doc.pdf>

UK Declaration of Conformity

- Learn more about the UK Declaration of Conformity, Please click below link to download.
- <http://files.iclever.com/wm-101-uk-doc.pdf>

Documents / Resources

	iclever WM-101 Wireless Mouse [pdf] User Manual WM-101 Wireless Mouse, WM-101, Wireless Mouse, Mouse
---	---

References

- [User Manual](#)

[Manuals+](#), [Privacy Policy](#)

This website is an independent publication and is neither affiliated with nor endorsed by any of the trademark owners. The "Bluetooth®" word mark and logos are registered trademarks owned by Bluetooth SIG, Inc. The "Wi-Fi®" word mark and logos are registered trademarks owned by the Wi-Fi Alliance. Any use of these marks on this website does not imply any affiliation with or endorsement.