

  
**MW360 Wireless Mouse**



# iClever MW360 Wireless Mouse User Manual

[Home](#) » [iClever](#) » iClever MW360 Wireless Mouse User Manual 

## Contents

- [1 iClever MW360 Wireless Mouse](#)
- [2 Product Information](#)
- [3 Product Usage Instructions](#)
- [4 Product Features](#)
- [5 4G USB Connection](#)
- [6 Charging Guide](#)
- [7 Product Parameters](#)
- [8 Multimedia Functions](#)
- [9 FAQ](#)
- [10 Documents / Resources](#)
  - [10.1 References](#)



**iClever MW360 Wireless Mouse**



## Product Information

### Specifications

- **Dimensions:** 105×148.5mm
- **Weight:** 100g
- **Type:** Wireless Mouse
- **Model:** MW360

## Product Usage Instructions

### Installation

1. Insert batteries into the wireless mouse following the polarity markings.
2. Turn on the mouse using the power switch located on the underside.
3. Ensure your computer or device has Bluetooth capability or plug in the USB receiver for connectivity.

### Operation

To use the wireless mouse:

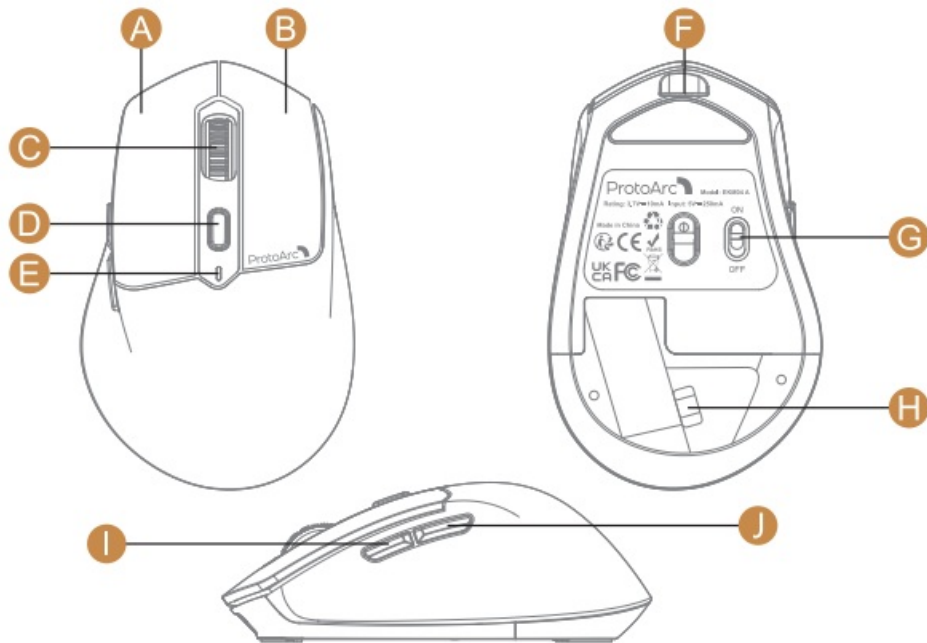
1. Move the mouse to control the cursor on your screen.
2. Left-click, right-click, and scroll using the buttons provided on the mouse.
3. If experiencing connectivity issues, refer to the troubleshooting section or move closer to the receiver.

### Maintenance

To ensure optimal performance:

- Keep the mouse clean by wiping it with a soft, dry cloth.
- Replace batteries when the mouse becomes unresponsive.
- Avoid dropping or exposing the mouse to extreme temperatures.

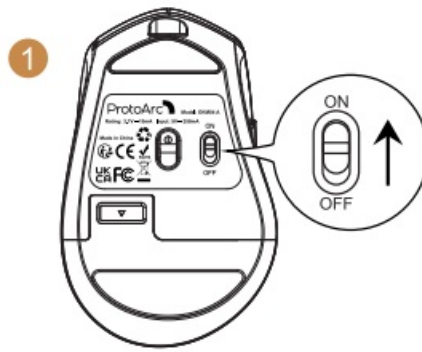
## Product Features



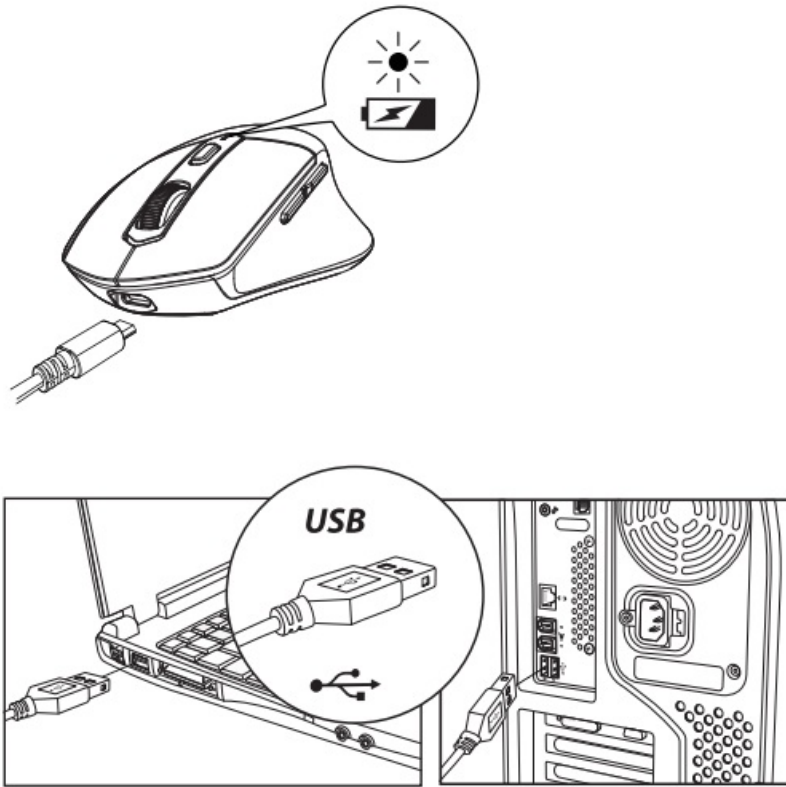
1. Left Button
2. Scroll Wheel
3. Low Battery / Charging Indicator
4. Power Switch
5. Forward Button
6. Right Button
7. DPI Button
8. TYPE-C Charging Port
9. USB Receiver
10. Backward Button

## 4G USB Connection

1. Switch the mouse ON.
2. Take out the USB receiver from the bottom of the mouse.
3. Plug the USB receiver into the USB port of the computer, then the mouse can work normally.



## Charging Guide

















1. When the battery is low, the low battery red indicator starts flashing until the keyboard/mouse turns off.
2. Plug the Type-C port into the keyboard/mouse and the USB-A port into the computer to charge. The red light stays on while charging.
3. It takes 2-3 hours to fully charge. The indicator turns green when fully charged.

## Product Parameters

### Mouse:

- **DPI:** 800/1200/1600/2400
- **Battery Capacity:** 300mAh
- **Working Voltage:** 3.7V
- **Working Current:**  $\leq 5\text{mA}$
- **Standby Current:**  $\leq 1.5\text{mA}$
- **Sleeping Current:**  $\leq 0.3\text{mA}$
- **Standby Time:**  $\geq 365$  Days
- **Working Time:** 60 Hours
- **Charging Time:**  $\leq 2$  Hours
- **Wake up Way:** Press any button
- **Mouse Dimension:** 113.3×72.1×41.8mm

## Multimedia Functions

Keys	Functions	Keys	Functions
	Brightness -		Brightness +
	Window Switching		Multi-window Preview
	Show Desktop		Search
	Select All		Copy
	Cut		Paste
	Mute		Home
	Screenshot		
	Press FN+ESC to turn ON/OFF the FN function		

**Note:** The FN function is for alternate commands (F1-F12 & multimedia functions are dual-use keys).

**NOTE:**

This equipment has been tested and found to comply with the limits for a Class B digital device, pursuant to part 15 of the FCC Rules.

These limits are designed to provide reasonable protection against harmful interference in a residential installation. This equipment generates, uses and can radiate radio frequency energy and, if not installed and used in accordance with the instructions, may cause harmful interference to radio communications. However, there is no guarantee that interference will not occur in a particular installation. If this equipment does cause harmful interference to radio or television reception, which can be determined by turning the equipment off and on, the user is encouraged to try to correct the interference by one or more of the following measures:

- Reorient or relocate the receiving antenna.
- Increase the separation between the equipment and receiver.
- Connect the equipment into an outlet on a circuit different from that to which the receiver is connected.
- Consult the dealer or an experienced radio/TV technician for help

Changes or modifications not expressly approved by the party responsible for compliance could void the user's authority to operate the equipment.

**This device complies with Part 15 of the FCC Rules. Operation is subject to the following two conditions:**

1. this device may not cause harmful interference, and
2. this device must accept any interference received, including interference that may cause undesired operation.

**FAQ**


**Q: What should I do if my wireless mouse stops working?**

A: First, check if the batteries need replacement. If that doesn't work, try re-pairing the mouse with your device or reinserting the USB receiver. If issues persist, contact customer support for further assistance.

**Q: Can I use this wireless mouse with a tablet or smartphone?**

A: Yes, as long as your tablet or smartphone supports Bluetooth connectivity or has a USB port for the receiver, you can use the wireless mouse with them.

**Documents / Resources**

	<a href="#">iClever MW360 Wireless Mouse</a> [pdf] User Manual 2AKHJ-MW360, 2AKHJMW360, MW360 Wireless Mouse, MW360, Wireless Mouse, Mouse
---	---

**References**

- [User Manual](#)

[Manuals+](#), [Privacy Policy](#)

This website is an independent publication and is neither affiliated with nor endorsed by any of the trademark owners. The "Bluetooth®" word mark and logos are registered trademarks owned by Bluetooth SIG, Inc. The "Wi-Fi®" word mark and logos are registered trademarks owned by the Wi-Fi Alliance. Any use of these marks on this website does not imply any affiliation with or endorsement.