



Icleanse Swift 5x User Guide

[Home](#) » [iCleanse](#) » Icleanse Swift 5x User Guide 

Contents

- [1 iCleanse Swift 5x](#)
- [2 Important Safety Instructions](#)
- [3 Indicators](#)
- [4 About your cleanse Swift 5x](#)
- [5 Tech Specs](#)
- [6 Troubleshooting](#)
- [7 Warranty and Registration](#)
- [8 Documents / Resources](#)
 - [8.1 References](#)
- [9 Related Posts](#)



iCleanse Swift 5x



Important Safety Instructions

READ ALL INSTRUCTIONS BEFORE USING THIS DEVICE

CAUTION: This device emits ultraviolet radiation. The device has been designed to contain UV exposure. Do not attempt to make modifications to the device or attempt to look directly at the UV lamps while it is in operation. UV light can cause discoloration with continuous exposure to plastic devices that are white or light in color.

WARNING: For the continued protection against risk of fire, replace only with fuse of the specified type and current ratings.

- Do not use outdoors or on wet surfaces.
- Use device only as described in this manual.
- Turn off the device before unplugging.
- Any service should be performed by an authorized service representative
- **CAUTION:** Double pole/neutral fusing.

Meet your Swift 5x

The iCleanse Swift 5x provides a chemical-free, general-purpose disinfection for mobile phones and tablets. The Swift 5x has been designed for minimal contact with what you place in it, allowing maximum surface coverage by germicidal light during the disinfection cycle. Please read through this guide thoroughly to ensure proper use of your Swift 5x.

Indicators

- The iCleanse Swift 5x has an easy-to-use interface. Below are the various lighted buttons and their functions.
- Cycle Time Remaining Progress Bar: Shows the remaining time in the disinfection cycle.

- Admin Mode: Illuminates when you are in administrator mode.
- Service Lamps: Illuminates when it's time to replace your lamps.
- Stop Button: Stops the disinfection cycle.
- Lock Button: Locks all trays of the unit. The light under this button indicates that the unit is locked.
- Start Button: Starts the disinfection cycle for all trays.
- Disinfecting: Indicates that the drawer is being disinfected.
- Charging: Indicates that a device is being charged.
- Tray Open: Indicates that the tray is open.

About your cleanse Swift 5x

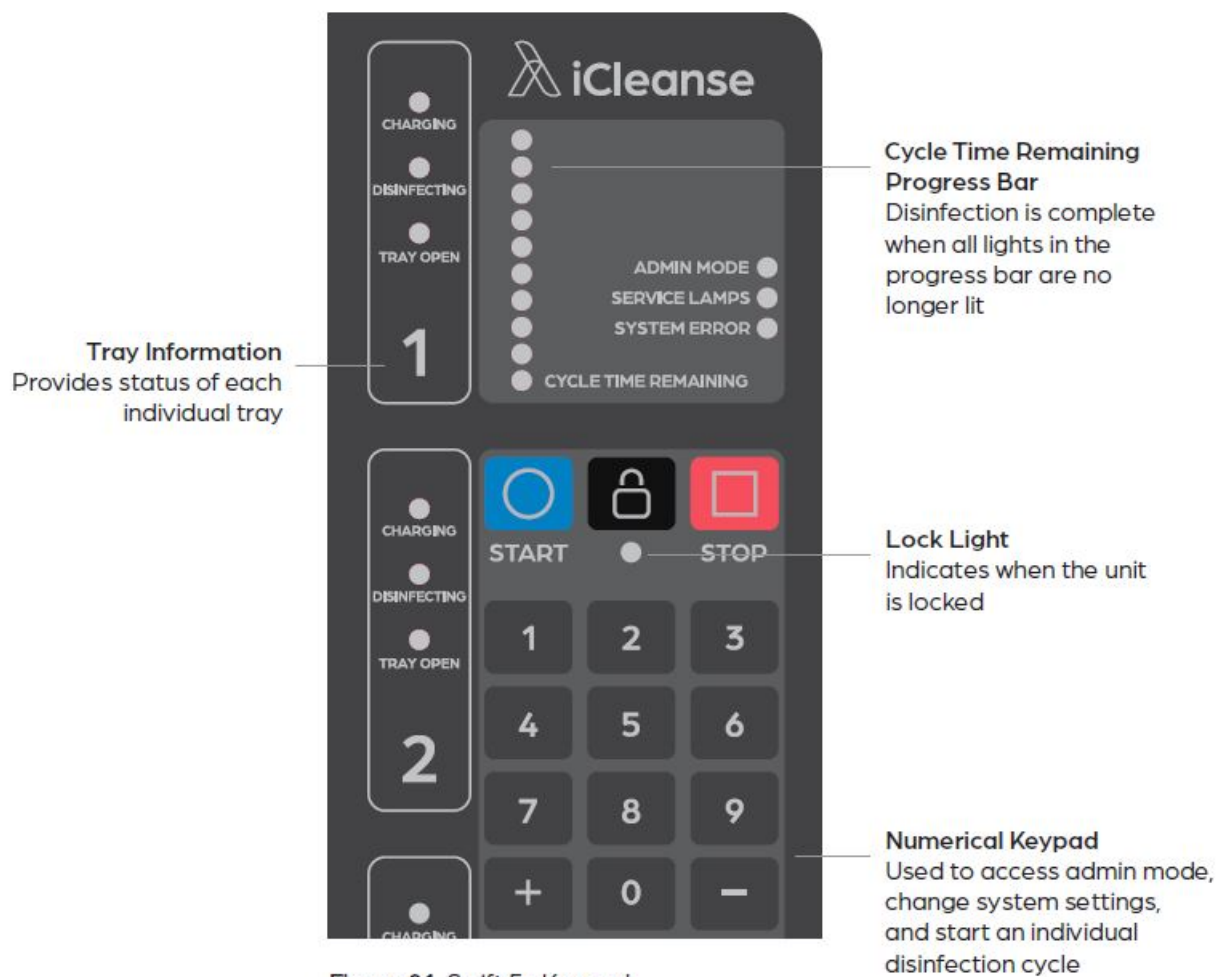


Figure 01. Swift 5x Keypad

Tech Specs

Model	Swift 5x
Dimensions	15.5 in x 17.5 in x 17.75 in / 39.4 cm x 44.5 cm x 45 cm
Weight	46 lbs / 20.8 kg
Basket Accommodations	8.5 in x 11 in x .75 in / 22 cm x 28 cm x 2 cm
Disinfection Cycle Time	Set at Factory — Default is 120 seconds
Operating Temp. Range	37°F – 95°F / 2.78°C – 35°C
Operating Humidity Range	5-95% @ 82.4°F / 5-95% @ 28°C
Storage Humidity Range	0-95% Non-condensing
AC Supply Voltage	120VAC – 240VAC
Installation Requirements	Level Surface; 3 in / 7.5 cm from obstruction
Power Cord Length	6.5 ft / 2 m

Setting up your Swift 5x

Ensure the Swift 5x unit is on a level surface and has 3 to 4 inches of open space behind it to allow for proper airflow for the cooling fan. Plug in the power cord to any standard outlet and power in the unit by using the switch on the back.

Admin Mode

Admin mode allows the user to create and change pass codes for admins and users as well as reset the lamp counter.

Entering Admin Mode

1. Step 1: Turn the unit on.
2. Step 2: Press and continue to hold the “+” key while entering the admin PIN. The default PIN is 1234.
3. Step 3: To exit admin mode, press and hold the “-” key and enter the admin PIN. Admin mode will also exit after 60 seconds of inactivity.

PIN Management

There are two types of PINs stored in the iCleanse’s memory — administrator PINs and user PINs. The unit must be in admin mode to make these changes. User PIN: Lock and Unlock unit (maximum of 16 four-digit PINs)

Administrator PIN: Make system changes, add and remove users and administrators (maximum of 4, four-digit PINs)

Adding and deleting PIN's

Add an admin PIN by entering admin mode, then entering “++XXXX” and delete by entering “-XXXX” (XXXX to be replaced by your desired 4-digit PIN)

Add a user PIN by entering “+XXXX” and delete by entering “-XXXX”

Delete all user PINs by entering “+99” (this will not delete the admin PINs)

Guidelines for Use

- Non-Critical Devices: iCleanse Swift 5x units should be used on devices classified as non-critical. “Non-Critical” medical devices are devices that are in contact with unbroken skin only.
- General Purpose Disinfection: This is described as a germicide intended to process non-critical medical

devices and equipment surfaces. Germicide is an agent that kills germs, like pathogenic microorganisms.

- **Cleaning vs Disinfecting:** The iCleanse Swift 5x's germicidal lamps will not penetrate dirt and grime, therefore it is highly recommended that you still periodically clean your devices. Cleaning is not disinfecting and vice versa.
- **Lamp Recycling:** Please visit www.lamprecycle.org for information on recycling your lamps after use.
- **Expectations:** Due to the progressive application of UV-C light, the devices being disinfected may experience color change over time.
- **Power Cord:** Do not store the power cord inside the unit as it may cause damage to the inside of the unit.

Disinfecting

There are three ways to disinfect with your Swift 5x.

1. Method 1: Dock, charge, disinfect multiple devices at once.

1. Step 1: Open a tray and place your device in the basket.
2. Step 2: To charge the device, plug into the USB port at the back of the tray. Please note that USB charging cables are not provided.
3. Step 3: Close the tray
4. Step 4: Repeat until all devices are in the unit as needed. The unit will automatically begin charging and disinfecting after 7 seconds once a device is plugged into any of the USB port and all trays are closed. You do not have to press the start button if you're charging as well as disinfecting.
5. Step 5: The unit automatically locks when the disinfection cycle is in process. You will not be able to open the trays or remove devices until the cycle completes. Step 6: The cycle is complete when all the "DISINFECTING" lights are solid blue.

2. Method 2: Disinfect a single device on the fly.

1. Step 1: Open any tray and place your device in the basket.
2. Step 2: Close the tray.
3. Step 3: Press and hold the number on the keypad that corresponds to the tray you are disinfecting to start a disinfection cycle.
4. Step 4: Wait for the disinfection cycle to complete.
5. Step 5: Open the tray and remove the disinfected device.

3. Method 3: Disinfect multiple devices on the fly.

1. Step 1: Open any tray and place your device in the basket.
2. Step 2: Close the tray.
3. Step 3: Repeat steps 1 & 2 until all devices are in the unit.
4. Step 4: Press and hold the start button to disinfect all trays.
5. Step 5: The unit automatically locks when the disinfection cycle is in process. You will not be able to open the trays or remove devices until the cycle completes. Step 6: The cycle is complete when all the "DISINFECTING" lights are solid blue.
 - All trays must be closed for the disinfection process to begin.
 - Press the stop button if you need to interrupt the disinfection cycle.

Lamp Status & Lamp Replacement

Each set of lamps has a lifespan of 4,000 cycles.

When lamps reach 500 cycles remaining, the Service lamps light will turn on.

When there are 0 cycles remaining you can no longer run a disinfection cycle. To learn how to replace your lamps go to: www.icleanse.com/support.

Resetting the Lamp Cycle Counter

1. After replacing the lamps follow this procedure to reset the lamp cycles to 4,000. Step 1: Hold “+” and enter “1234” on the keypad.
2. Step 2: You will hear a beep along with the “ADMIN MOSE” light illuminating on the front panel.
3. Step 3: Enter “+77+0000” on the keypad.
4. Step 4: You should hear a beep and see the “SERVICE LAMPS” light on the front panel turning off.
5. Step 5: Hold “-” and enter “1234” on the keypad.
6. Step 6: You will hear a beep along with the “ADMIN MODE” light on the front panel turning off.
7. Step 7: Switch off the unit and turn it back on after 5 seconds.

Troubleshooting

- If you are having trouble with your Swift 5x unit, please see the following solutions.
- Light illuminates the tray is open while closed
- Open the tray and check for any obstructions in the bay. Close the tray and check that the Tray Open light is off.
- Tray won't close (visibly)
- Clear any obstructions. If the problem persists, contact iCleanse.
- Unit does not power on
- Check and replace fuses at the power cord connection point.
- Unexpected display or control panel behavior
- Cycle power switch off/on.
- Trays won't unlock
- Use the default PIN code 1234.

Warranty and Registration

For iCleanse Swift 5x Warranty

Each iCleanse product comes with a full 1-year warranty upon registration of your product. For more info visit www.icleanse.com/warranty.

Registration

Please visit www.icleanse.com/warranty to register your new Swift 5x within 30 days of your purchase to activate your one year warranty.

We're Here to Help

iCleanse offers comprehensive support from our in-house customer experience team. Available Monday thru Friday 9:00am – 5:00pm

800.969.1166 icleanse.com/support support@icleanse.com

Documents / Resources



Icleanse Swift 5x [pdf] User Guide Swift 5x

References

- [!\[\]\(a88007b249b36c75dcbde101f514cec3_img.jpg\) iCleanse - iCleanse Homepage](#)
- [!\[\]\(800628c068083563f747129d8b339031_img.jpg\) Support Request - iCleanse](#)
- [!\[\]\(01f5879e654468630e790d983a473ee0_img.jpg\) Support Request - iCleanse](#)
- [!\[\]\(ce8b778f402aca455ccdfd070a33a08d_img.jpg\) Warranty - iCleanse](#)
- [!\[\]\(c4a503502fa8c84efaf3849039d81824_img.jpg\) Lamp Recycle – Environmental Responsibility Starts Here](#)