

**ICERIVER**  
**KS1, KS2**  
**Batch**  
**Processing**  
**Tool**



# ICERIVER KS1, KS2 Batch Processing Tool User Manual

[Home](#) » [ICERIVER](#) » ICERIVER KS1, KS2 Batch Processing Tool User Manual 

## Contents

- [1 ICERIVER KS1, KS2 Batch Processing Tool](#)
- [2 Functional Overview](#)
- [3 Miner Management](#)
- [4 Miner Scan and Detection](#)
- [5 Configuring Miner](#)
- [6 Factory Reset](#)
- [7 Firmware Upgrade](#)
- [8 Setting](#)
- [9 Documents / Resources](#)
  - [9.1 References](#)

**ICERIVER**

**ICERIVER KS1, KS2 Batch Processing Tool**



**Note:** This software is only compatible with ICERIVER miners and does not support other brands' miners.

## Functional Overview

### Miners Monitoring and Upgrade

#### Reminders

1. The PC running the software must be Windows 10 or Windows 11;
2. The language is fixed according to the software version: the Chinese version, and the English version.
3. If you encounter virus warnings during download, we recommend trying a different browser (this software is safe).
4. Before using the software, ensure it is extracted; otherwise, it will not function properly.
5. The computer and miners using this software must have network connectivity; when setting a fixed IP, ensure the software and miners are in the same subnet.

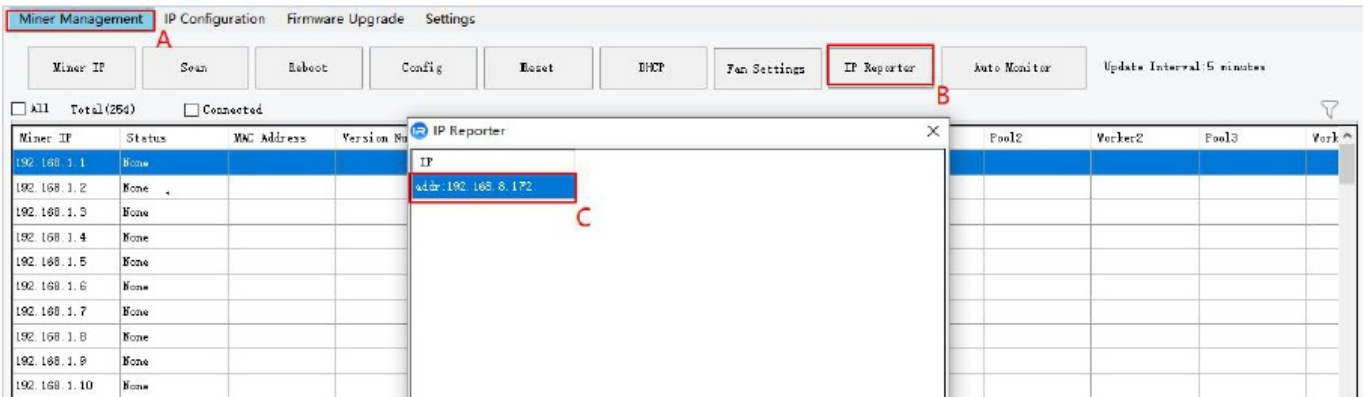
## Miner Management

- Double-click to launch the software.

名称	修改日期	类型	大小
en	2024/7/3 10:21	文件夹	
fir	2024/7/3 10:21	文件夹	
log	2024/7/3 10:29	文件夹	
Config	2024/6/12 9:27	Microsoft Edge ...	4 KB
IceRiver_MinerTool	2024/6/8 15:31	应用程序	589 KB
Newtonsoft.Json.dll	2023/5/18 16:11	应用程序扩展	686 KB

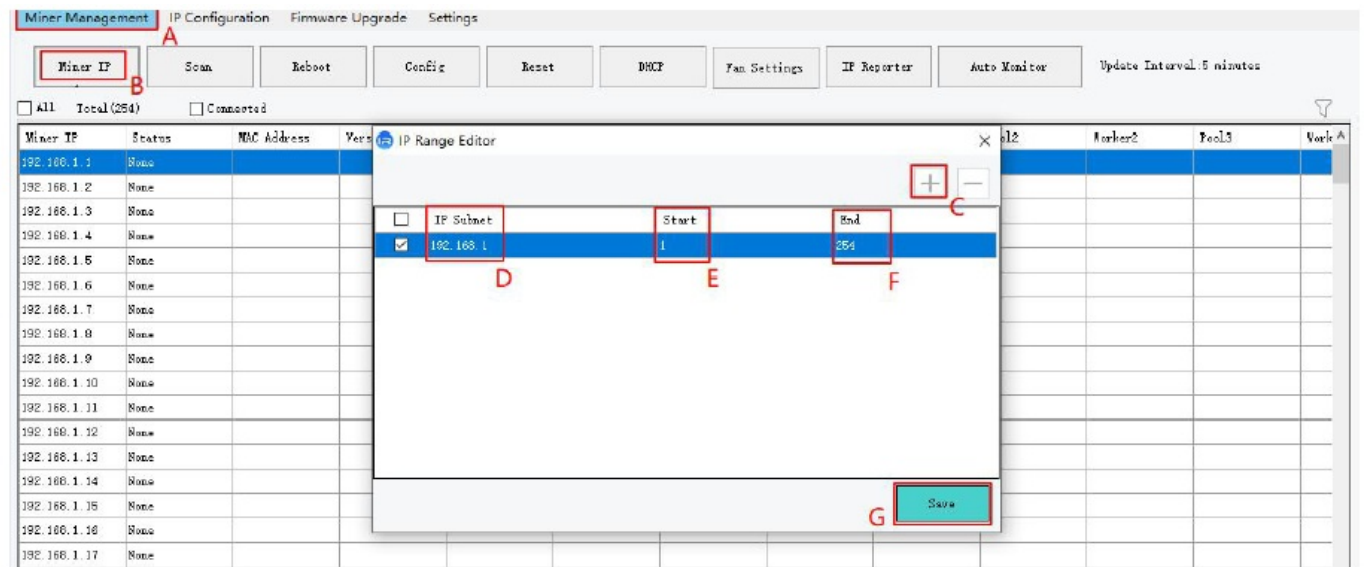
## IP Report

- **A:** Click on “Miner Management” to enter the miner management interface.
- **B:** Click on “IP Reporter” to enter the interface.
- **C:** Short press the IP button on the machine panel for 2 seconds.



## IP Range Editor

- **A:** Click on “Miner Management” to enter the “Miner Management” interface.
- **B:** Click on “Miner IP” to enter the “IP Range Editor” interface.
- **C:** Click on “+” to retrieve the IP range of the Miners.
- **D, E, F:** Double-click on an IP range to modify it.
- **G:** Click “Save”.



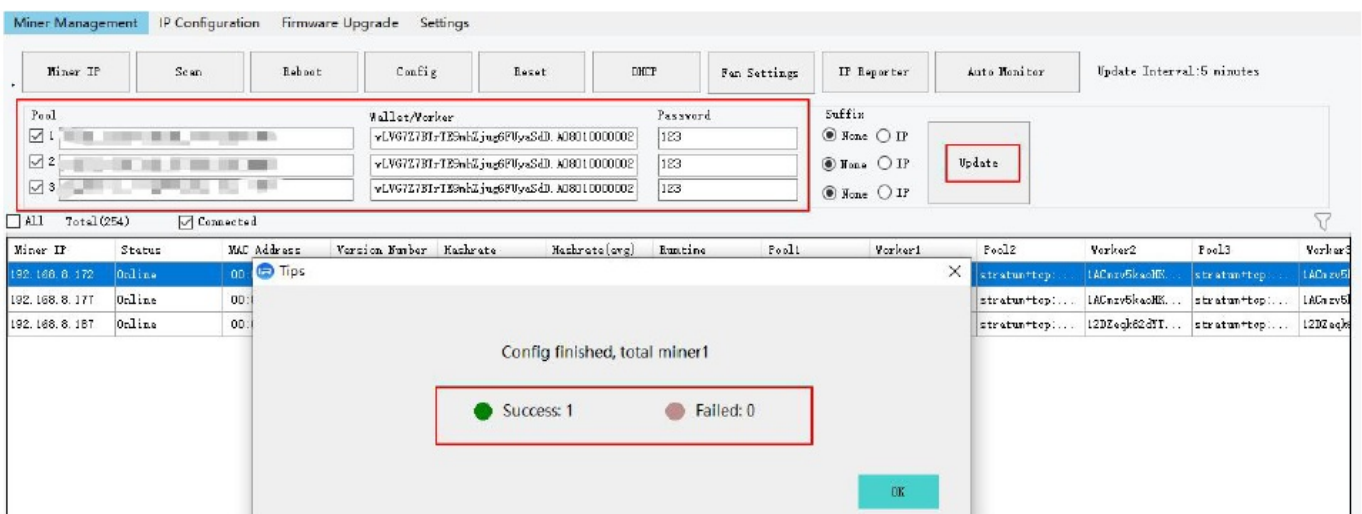
## Miner Scan and Detection

- After scanning the entire IP range, a popup window will display the number of machines in different states (Normal, Failed, Offline, Abnormal).
- You can click “Connected” to display only the successfully scanned miners.



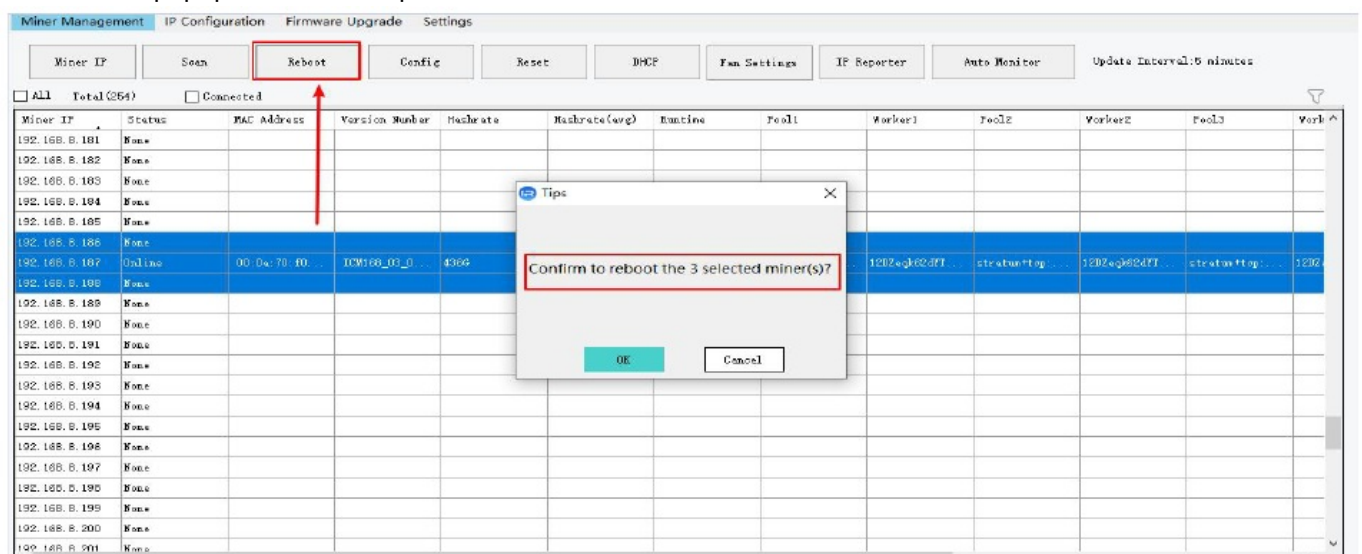
## Configuring Miner

- **A.** Press “Ctrl” or select “All” to choose the miners you want to configure. You can change settings such as pool address, miner name, password, etc.
- **B.** Click on “Update” to apply the configuration to the selected miners. After configuration, you will receive a prompt indicating the number of miners that were successfully configured and the number that failed.



## Reboot Miner

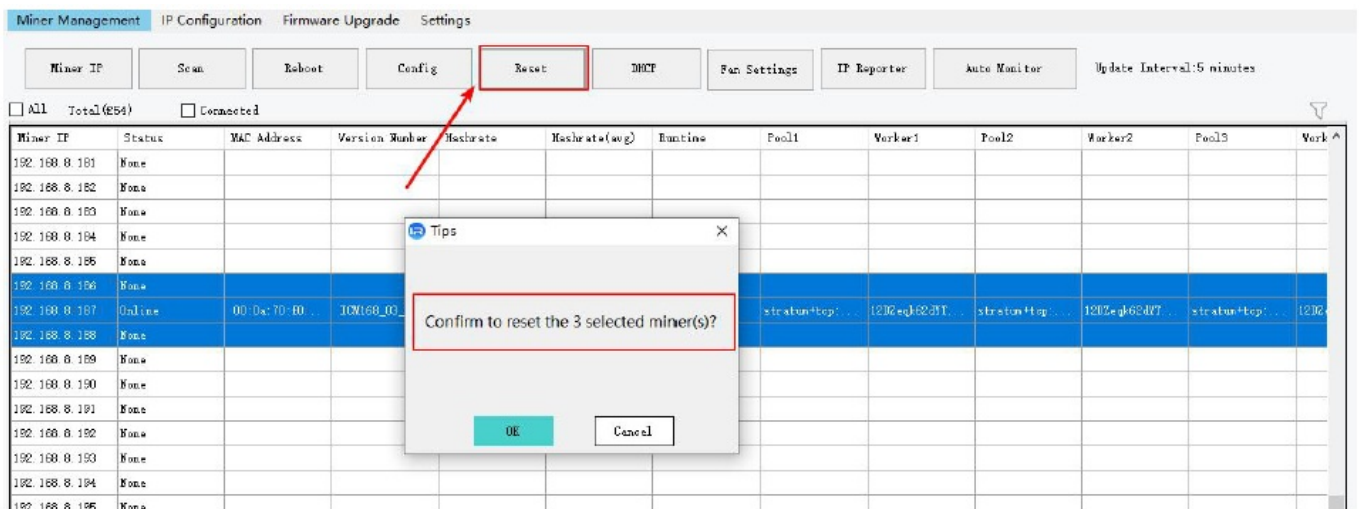
If you need to reboot a specific miner, you can select that miner and then click “Reboot.” If you want to reboot multiple miners, hold down “Ctrl” and click to select the miners you want to reboot. Clicking “Reboot” will prompt a confirmation popup; click “OK” to proceed.



## Factory Reset

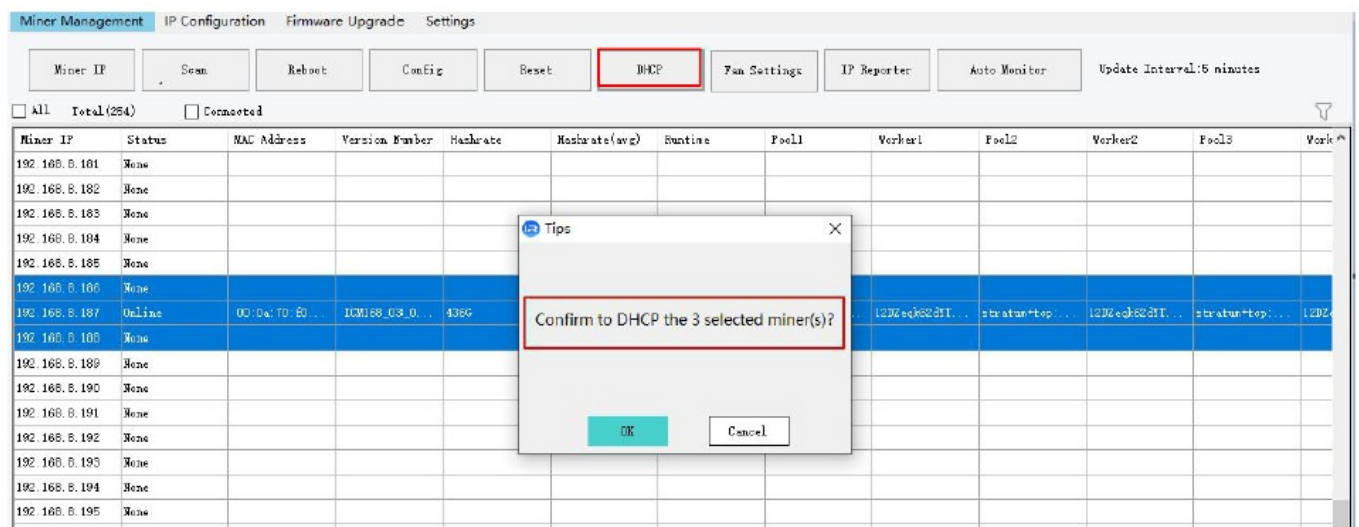
- If you need to reset a miner to its factory settings, you can click the miner and then click “Reset”.

- This action will prompt a confirmation popup; click “OK” to proceed.
- If you want to reset factory settings for multiple miners, hold down “Ctrl” and click to select the miners you want to reset.



## Restore DHCP Mode

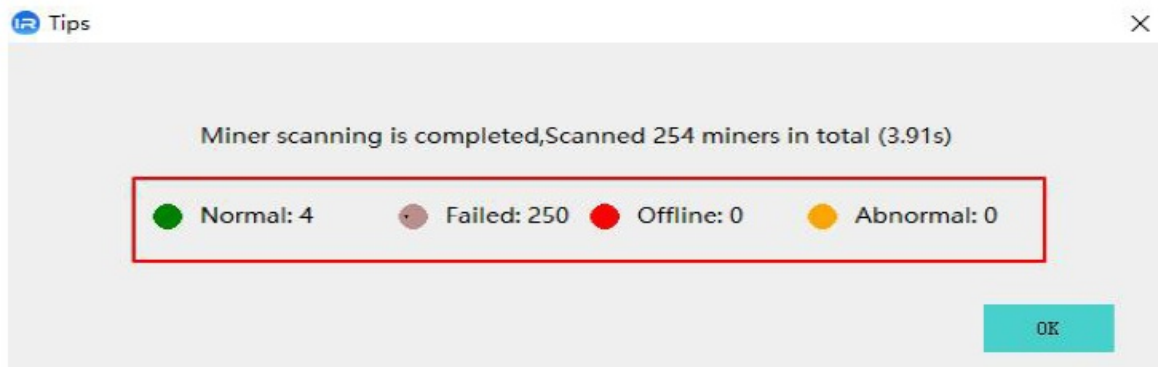
- If a miner is currently set with a static IP and you need to switch it back to automatically obtain an IP address via DHCP, follow these steps:
- Select the miner you want to restore.
- Click on “DHCP”.
- Confirm the action by clicking “OK”.



## Auto Monitor of Miners

- Once the miner settings are configured, click on “Auto Monitor”. By default, it will refresh every 5 minutes.
- Colors indicate: Normal (Green), Offline (Red), Abnormal (Yellow), Failed (Dark Red).





## Accessing web interface

- Clicking on the miner's IP allows direct access to the miner's web interface.

Miner Management IP Configuration Firmware Upgrade Settings

Miner IP

Scan

Reboot

Config

Reset

DMCP

Fan Settings

IP Reporter

Auto Monitor

Update Interval: 5 minutes

☐ All Total (254) ☐ Connected

Miner IP	Status	MAC Address	Version Number	Hashrate	Hashrate (avg)	Runtime	Pool1	Worker1	Pool2	Worker2	Pool3	Worker3
192.168.8.175	None											
192.168.8.176	None											
192.168.8.177	Online	00:0a:70:80:...	ICM188.03.0...	4046	4106	00:01:38:46	stratum+tcp...	1ACnsvSkaoHK...	stratum+tcp...	1ACnsvSkaoHK...	stratum+tcp...	1ACn...
192.168.8.178	None											
192.168.8.179	None											
192.168.8.180	None											
192.168.8.181	None											
192.168.8.182	None											
192.168.8.183	None											
192.168.8.184	None											
192.168.8.185	None											
192.168.8.186	None											

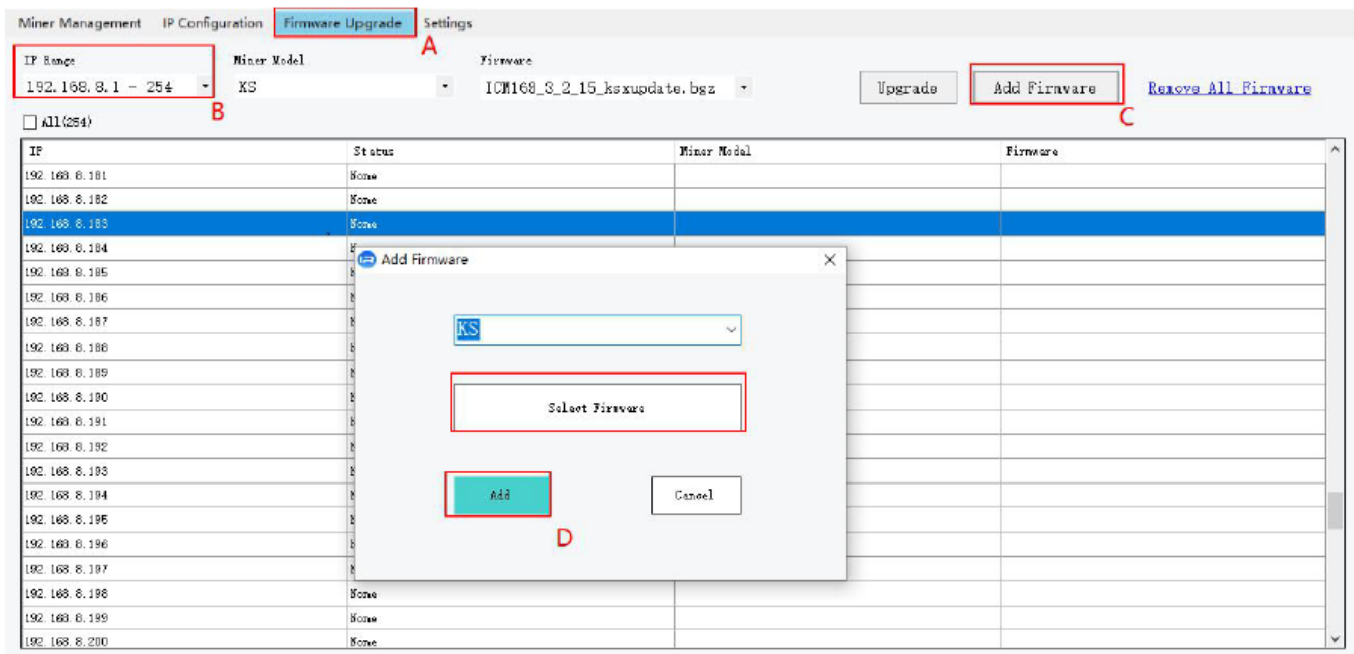
Click the okline IP address to go to the Web page

Click the online IP address to go to the Web page

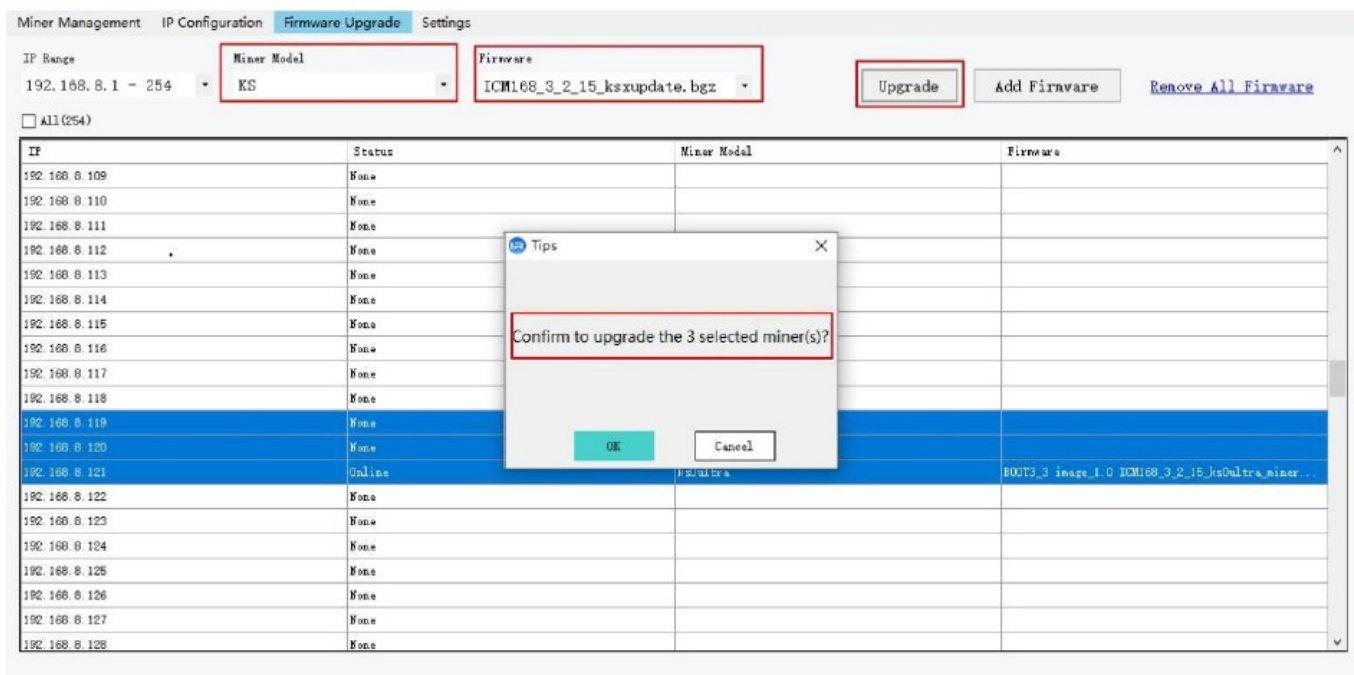
## Firmware Upgrade

If any miner experiences issues requiring a firmware upgrade, you can use batch firmware upgrade for resolution. Operating Instructions:

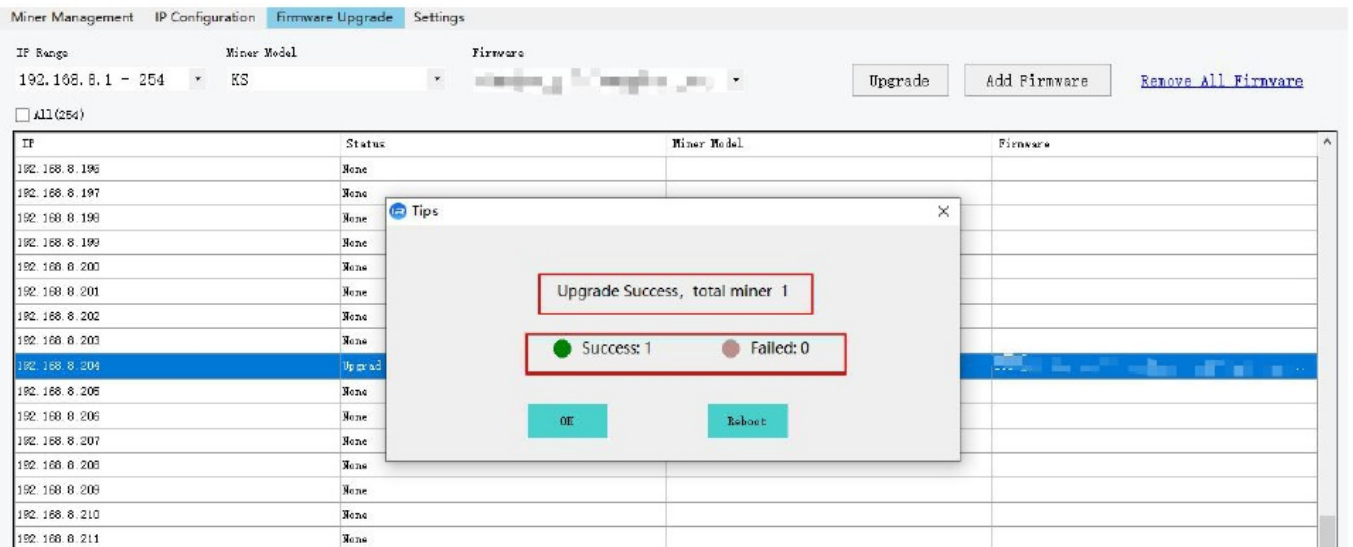
- Click on "Firmware Upgrade".
- Choose the IP range where the miners requiring upgrade are located.
  - Single-click to select the miners for upgrade. For multiple miners, hold down "Ctrl" while clicking to select.
- Click on "Add Firmware", which will prompt a dialog box to appear.
- After selecting the firmware upload, Click "Add" again, and a prompt confirming "Upload Successful" will appear



Select "Miner Model", and "Firmware", and click "Upgrade". A prompt will appear indicating the number of miners to be upgraded. Confirm the quantity and click "OK". The upgrade process takes approximately 2 minutes (Note: Do not power off during the upgrade process).

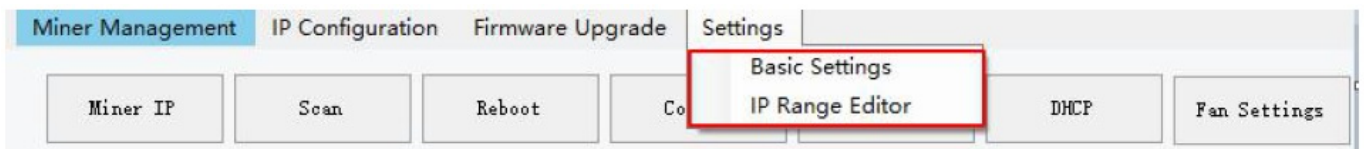


- Wait for 2 minutes, and a prompt will appear indicating the results of the upgrade: either Success or Failed.



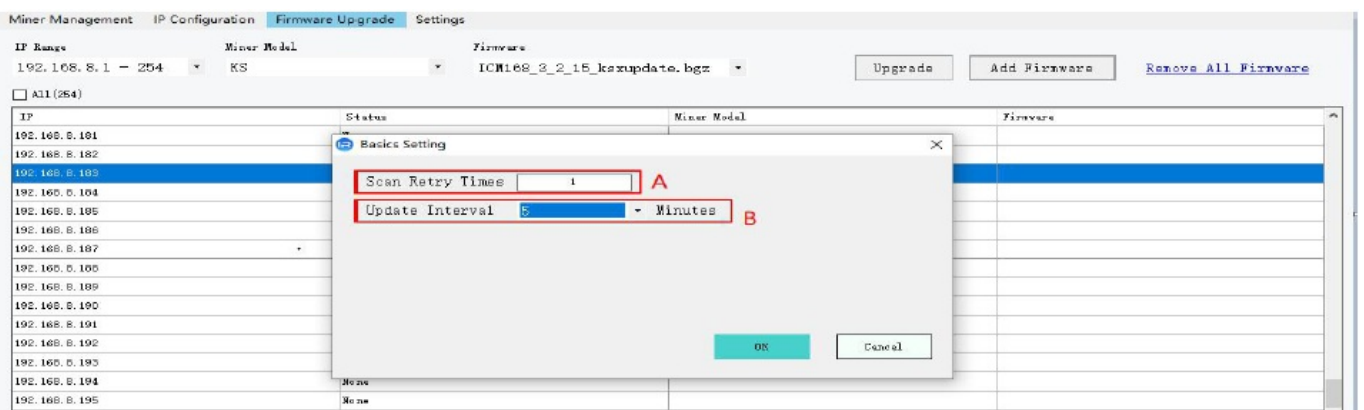
## Setting

- The batch software setting is divided into two functions: "Basic Settings" and "IP Range Editor".



## Basic Settings

- A:** Retry times for IP scanning, which can be set from 1 to 9 times.
- B:** Refresh interval for software monitoring, configurable at intervals of 5, 10, 20, 30, 60, or 120 minutes.

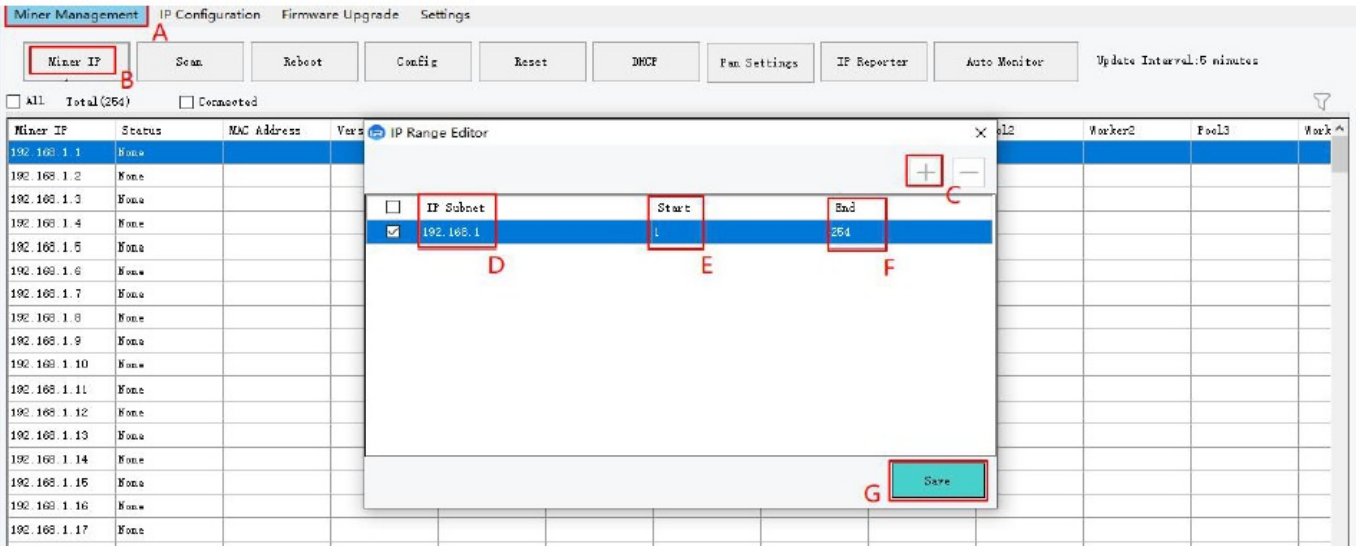


- After setting the software monitoring refresh interval, you can monitor the miners in the "Miner Management" interface.

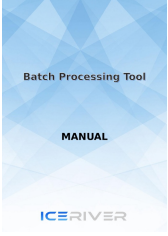


## IP Range Editor





Documents / Resources



[ICERIVER KS1, KS2 Batch Processing Tool](#) [pdf] User Manual

KS1, KS2, KS1 KS2 Batch Processing Tool, KS1 KS2, Batch Processing Tool, Processing Tool, Tool

References

- [User Manual](#)

[Manuals+](#), [Privacy Policy](#)

This website is an independent publication and is neither affiliated with nor endorsed by any of the trademark owners. The "Bluetooth®" word mark and logos are registered trademarks owned by Bluetooth SIG, Inc. The "Wi-Fi®" word mark and logos are registered trademarks owned by the Wi-Fi Alliance. Any use of these marks on this website does not imply any affiliation with or endorsement.