

## iBoard IB-P189C Black Running Boards Style



# iBoard IB-P189C Black Running Boards Style Installation Guide

[Home](#) » [iBoard](#) » iBoard IB-P189C Black Running Boards Style Installation Guide 

### Contents

- [1 iBoard IB-P189C Black Running Boards Style](#)
- [2 Product Specifications](#)
- [3 Product Usage Instructions](#)
- [4 PART LIST](#)
- [5 Mounting List AND Hardware](#)
- [6 INSTALLATION](#)
- [7 Documents / Resources](#)
  - [7.1 References](#)
- [8 Related Posts](#)

# iBoard

**iBoard IB-P189C Black Running Boards Style**



## Product Specifications

- **Part Number:** IB-P189C&J
- Rocker Panel Mount
- No drilling required

## Product Usage Instructions

### Step 1: Start Installation

Start installation from the passenger side front of the vehicle. Locate the front factory running board mounting location along the inner side of the body panel.

### Step 2: Install Passenger Side Front Mounting Bracket

Slide (1) Plastic Washer over each factory mounting stud in the body panel to prevent corrosion.

### Step 3: Attach Passenger Side Front Mounting Bracket

Select (1) Passenger side Mounting Bracket. Attach it to the (3) factory studs using (3) M8 Large Flat Washers and (3) M8 Nylon Lock Nuts. Do not fully tighten the hardware at this time.

### Step 4: Install Passenger Side Rear Mounting Bracket

Move to the Passenger Side Rear Mounting Location and repeat Steps 1-3 to install the Passenger Side Rear Mounting Bracket. Do not fully tighten at this time.

Step 5: Step Bar Installation

Install the Step Bar by attaching it to the sliders with (2) Carriage Bolts, using (2) M8 Large Flat Washers and (2) M8 Nylon Lock Nuts. Ensure all hardware is secure and tight.

**Attention:** Do periodic inspections to ensure all hardware is secure. Use mild soap or non-abrasive products for cleaning to protect your bars/boards.

FAQ

- **Q: Do I need any special tools for installation?**
  - **A:** No, the hardware required for installation is provided with the product. You may need basic hand tools for assembly.
- **Q: Can these step bars be painted to match my vehicle color?**
  - **A:** It is recommended to consult a professional for painting to ensure durability and a proper finish.

READ INSTRUCTIONS CAREFULLY BEFORE START ING INSTALLATION. REMOVE CONTENTS FROM BOX AND VERIFY ALL PARTS ARE PRESENT. ASSISTANCE IS RECOMMENDED.

- ROCKER PANEL MOUNT
- NO DRILLING REQUIRED

Fastener Size	Tightening Torque (ft-lbs)	Required
6mm	6-7	X
8mm	16-18	√
10mm	31-32	X
12mm	56-58	X
14mm	92-94	X

PART LIST

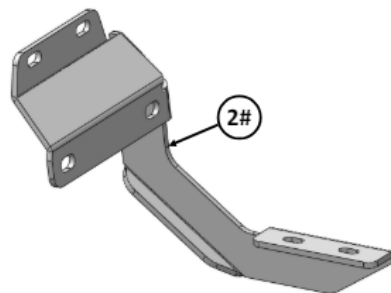
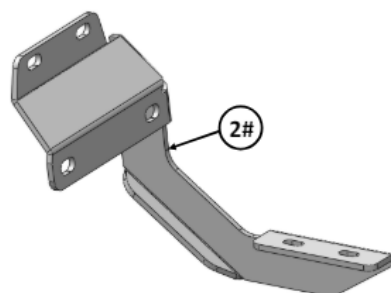
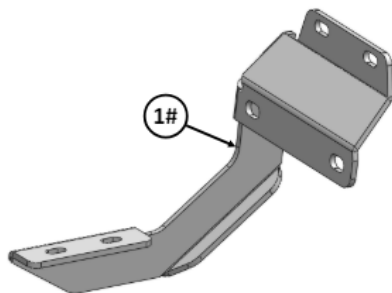
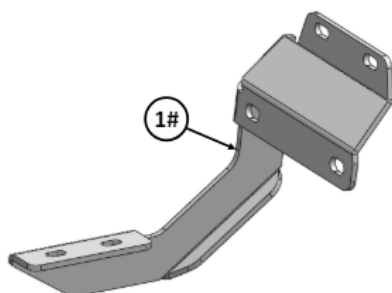
## PART LIST

Driver Side Step Bar

Front



Passenger Side Step Bar



## Mounting List AND Hardware

### Mounting Bracket List

Item	QTY	Description	Item	QTY	Description
1#	2	Driver Side Mounting Brackets	2#	2	Passenger Side Mounting Brackets

### Hardware Package A (For Bracket Installation)

Item	QTY	Description	Item	QTY	Description
1#	12	M8 Plastic Washers	3#	12	M8 Nylon Lock Nuts
2#	12	M8 Large Flat Washers			



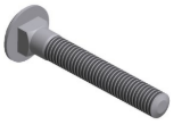



1 #



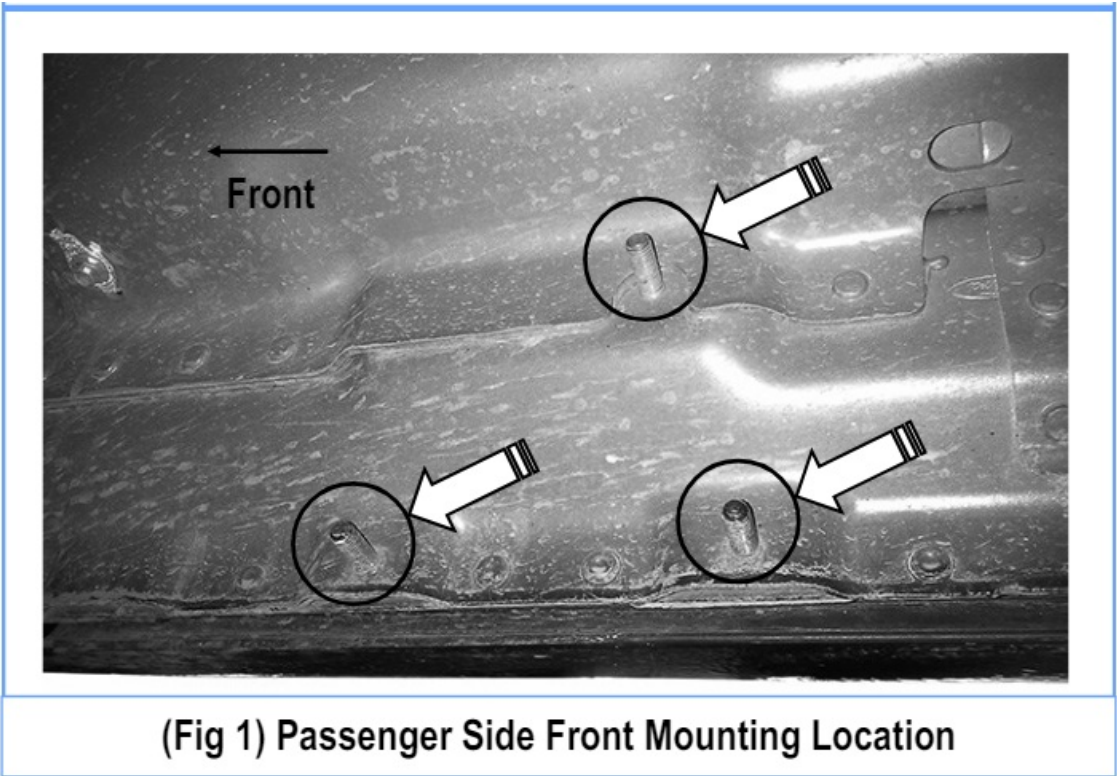
2 #

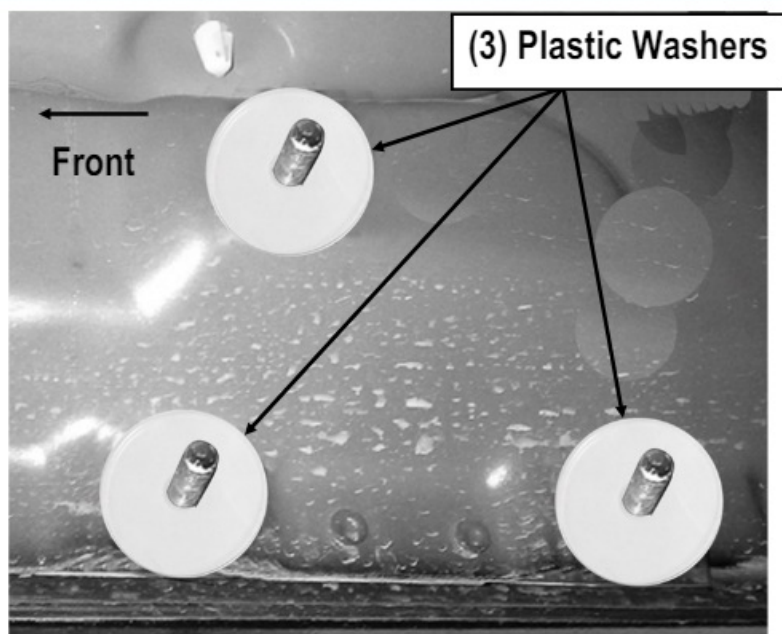


3 #

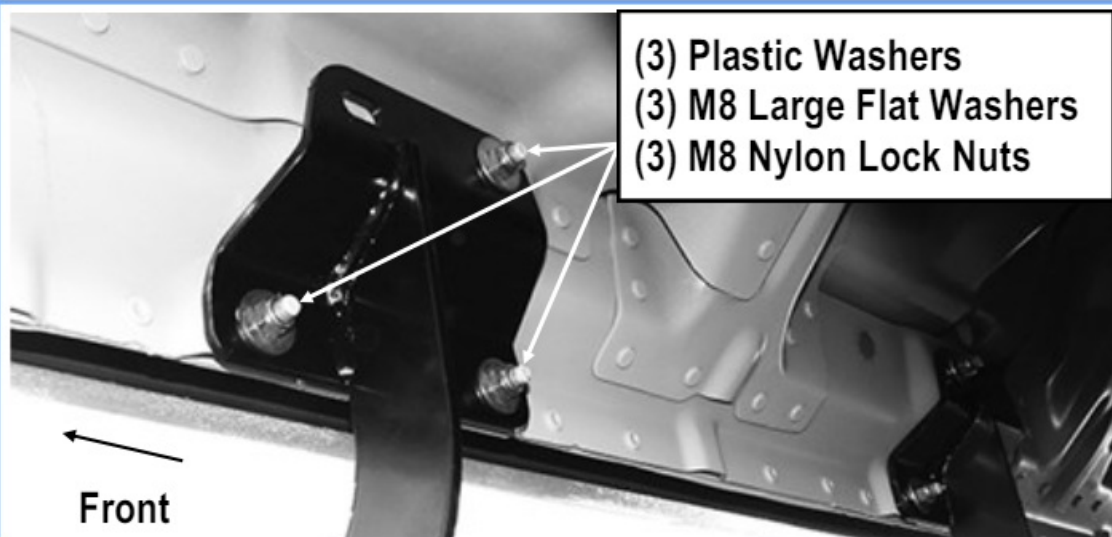
Hardware Package B (For Step Bar Installation)					
Item	QTY	Description	Item	QTY	Description
1#	8	M8X1.25-35mm Carriage Bolts	3#	8	M8 Nylon Lock Nuts
2#	8	M8 Large Flat Washers	4#	4	Sliders (Packed with Mounting Brackets)
<div><div>1 #</div><div>2 #</div><div>3 #</div><div>4 #</div></div>					

INSTALLATION

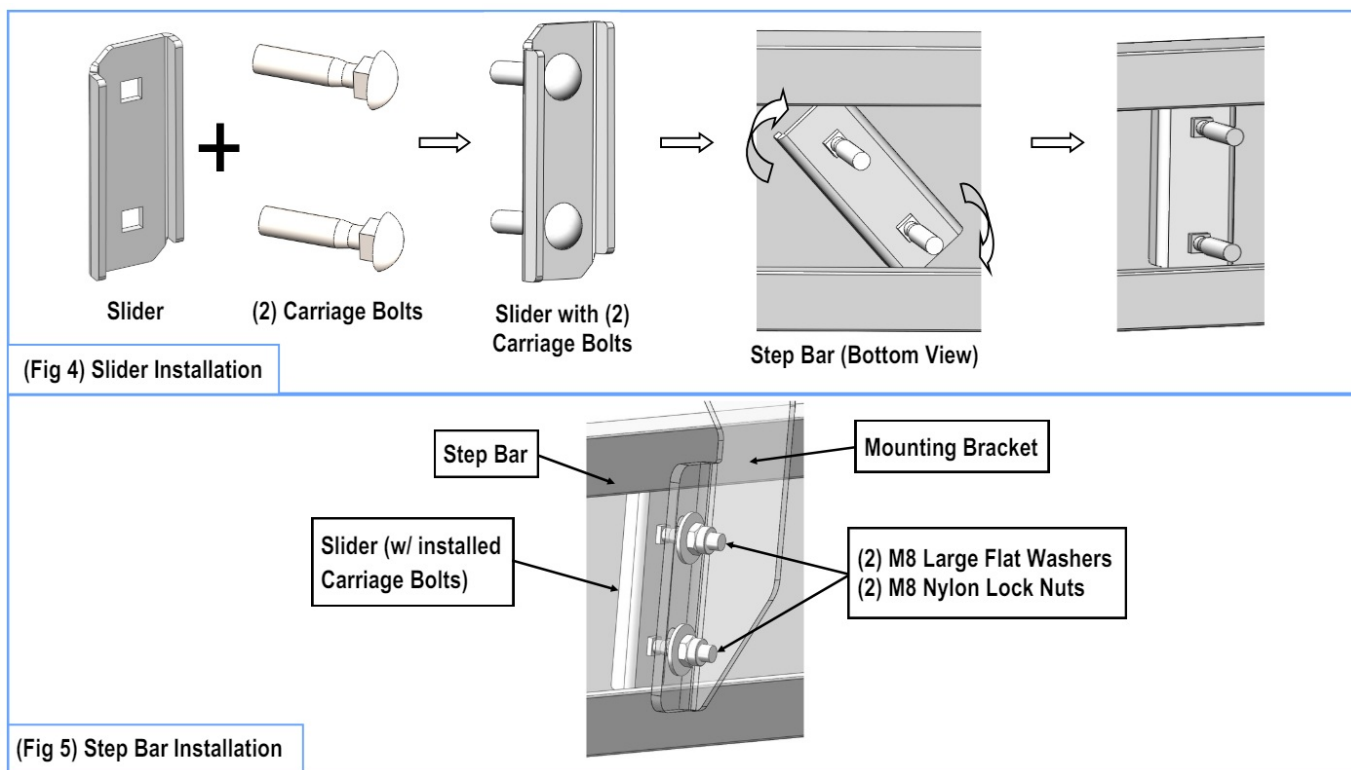




**(Fig 2) Thread Plastic Washers Onto 3 Mounting Studs  
(Passenger Side Front Mounting Location)**



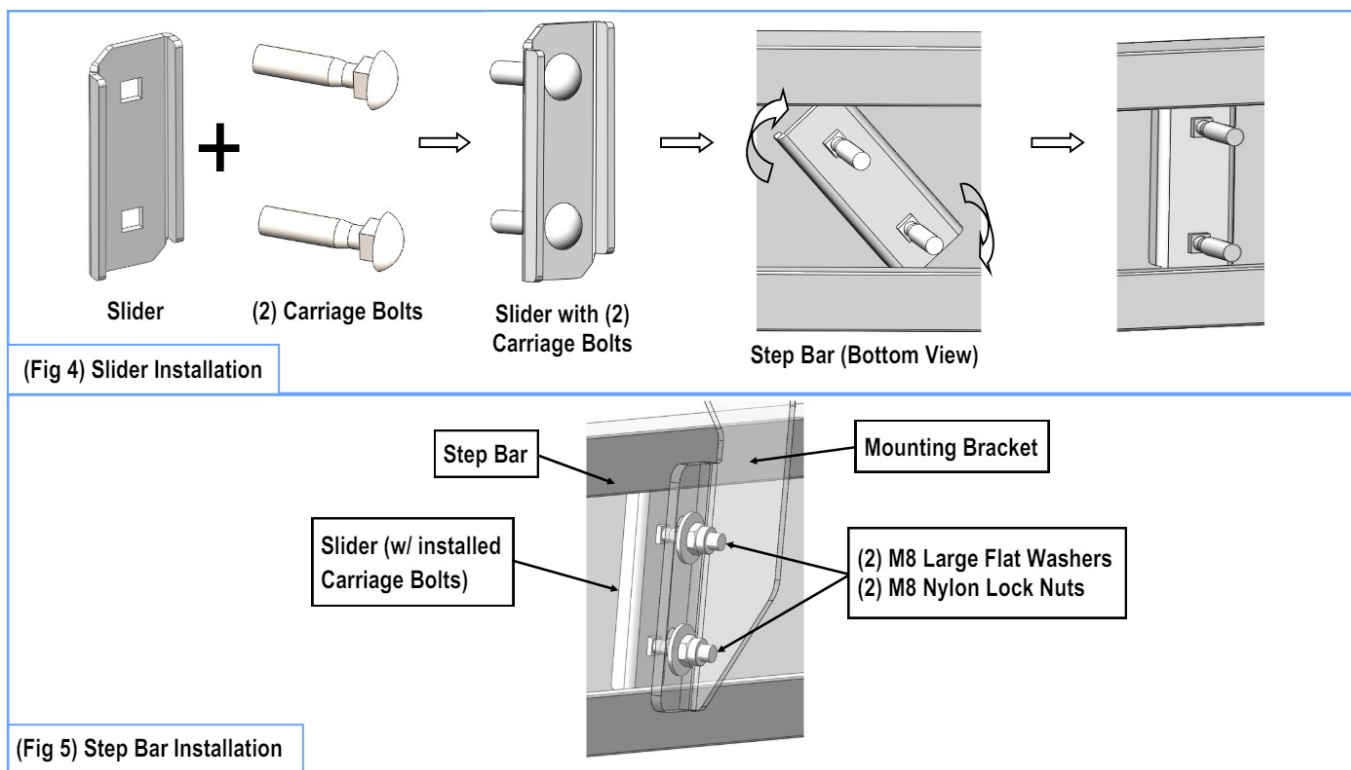
**(Fig 3) Passenger Front Mounting Bracket Installed (Example)**



- **STEP 1 :** Start installation from the passenger side front of the vehicle. Locate the front factory running board mounting location along the inner side of the body panel, (Fig 1).
- **STEP 2 :** Slide (1) Plastic Washer over each factory mounting stud in the body panel, (Fig 2).  
**Note:** The Plastic Washers are designed to prevent corrosion between the aluminum body panel and the steel mounting brackets.
- **STEP 3 :** Select (1) Passenger side Mounting Bracket. Attach the Mount-ing Bracket to the (3) factory studs with (3) M8 Large Flat Washers and (3) M8 Nylon Lock Nuts, (Fig 3). Do not fully tighten the hardware at this time.
- **STEP 4 :** Move to the Passenger Side Rear Mounting Location. Repeat Steps 1—3 to install the Passenger Side Rear Mounting Bracket. Do not fully tighten at this time.
- **STEP 5 :** Once all (2) Passenger side mounting brackets are installed, then proceed to the Step Bar installation. (Figs 4 & 5)

1. Select (1) Slider and (2) M8X1.25-35mm Carriage Bolts;
2. Install (2) M8X1.25-35mm Carriage Bolts in (1) Slider.
3. Slide the Slider (with carriage bolts) to the Step Bar.
4. Repeat to install the other (1) slider to the step bar.
5. Attach the Step Bar (with the Sliders) onto the installed mounting brackets. Position the Sliders to the installed brackets.

Secure the Step Bar to the installed Brackets by using (4) M8 Large Flat Washers and (4) M8 Nylon Lock Nuts and (2) Sliders, (Fig 5). Do not fully tighten the hardware at this time. Note: The Sliders are packed with the Mounting Brackets. Level and adjust the Step Bar and fully tighten all hardware. Repeat Steps 1-5 for the other side Step Bar installation. The installation is completed!!!



### Attention

Do periodic inspections to the installation to make sure that all hardware is secure and tight. In order to protect your bars/boards, please use mild soap/non-abrasive products for cleaning only.

Customer Support: [info@iboardauto.com](mailto:info@iboardauto.com)

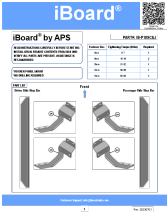
SCAN



Scan for  
Installation Video

---

## Documents / Resources

	<p><a href="#">iBoard IB-P189C Black Running Boards Style</a> [pdf] Installation Guide IB-P189C, IB-P189J, IB-P189C Black Running Boards Style, IB-P189C, Black Running Boards Style, Running Boards Style, Boards Style</p>
---	--

## References

- [User Manual](#)

### Manuals+, Privacy Policy

This website is an independent publication and is neither affiliated with nor endorsed by any of the trademark owners. The "Bluetooth®" word mark and logos are registered trademarks owned by Bluetooth SIG, Inc. The "Wi-Fi®" word mark and logos are registered trademarks owned by the Wi-Fi Alliance. Any use of these marks on this website does not imply any affiliation with or endorsement.