

iBoard IB P159 Running Boards Style



# iBoard IB-P159 Running Boards Style Instruction Manual

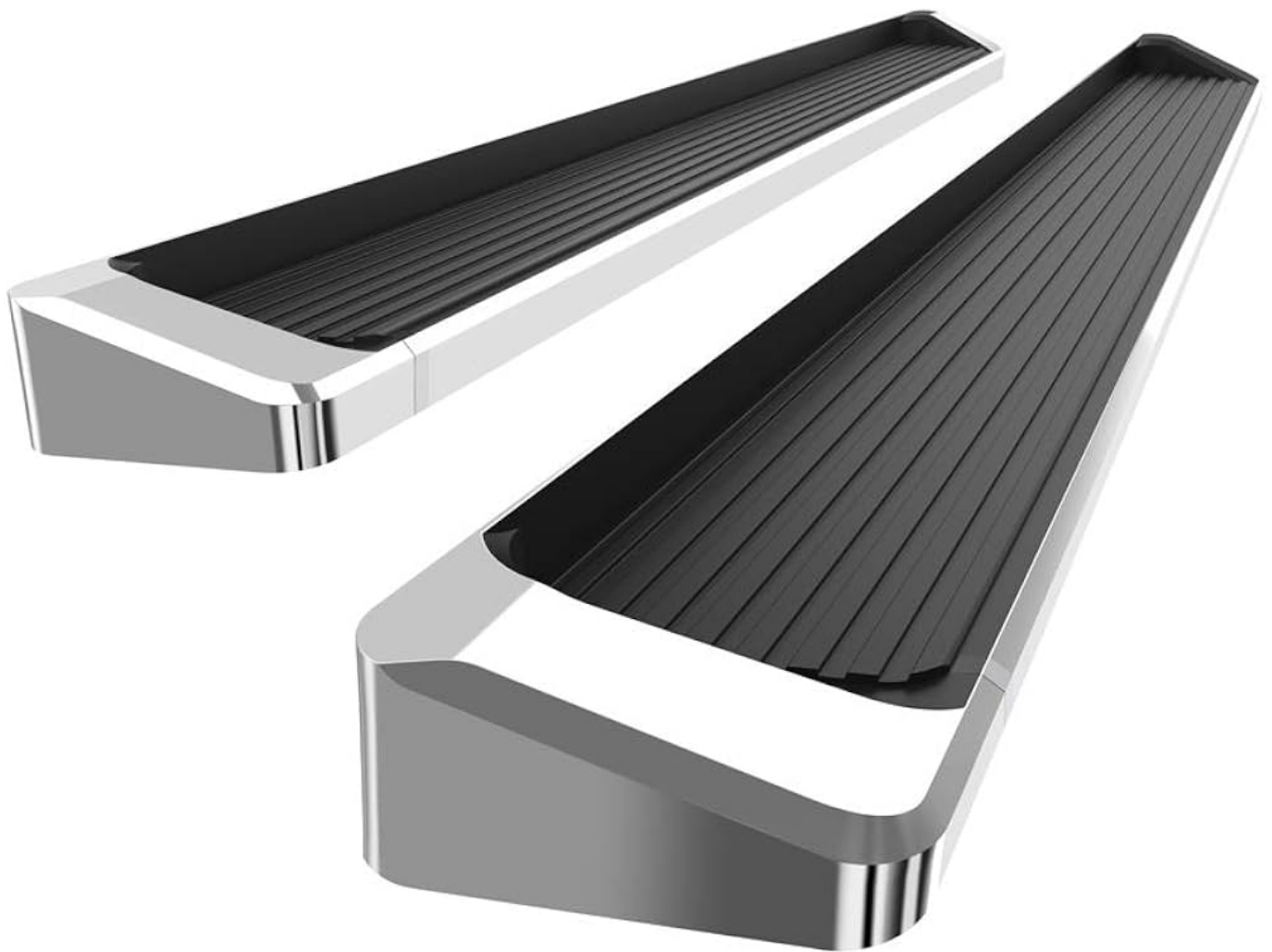
[Home](#) » [iBoard](#) » iBoard IB-P159 Running Boards Style Instruction Manual 

## Contents

- [1 iBoard IB-P159 Running Boards Style](#)
- [2 Product Specifications](#)
- [3 PART LIST](#)
- [4 INSTALLATION AND USING INSTRUCTION](#)
- [5 Frequently Asked Questions](#)
- [6 Documents / Resources](#)
  - [6.1 References](#)
- [7 Related Posts](#)

# iBoard

**iBoard IB-P159 Running Boards Style**



## Product Specifications

- **Part Number:** IB-P159/P258 C&J
- Rocker Panel Mount
- No drilling required
- Fastener Size Tightening Torque (ft-lbs):
  - **6mm:** 6-7
  - **8mm:** 16-18
  - **10mm:** 31-32
  - **12mm:** 56-58
  - **14mm:** 92-94

READ INSTRUCTIONS CAREFULLY BEFORE START ING INSTALLATION. REMOVE CONTENTS FROM BOX AND VERIFY ALL PARTS ARE PRESENT. ASSISTANCE IS RECOMMENDED.

- ROCKER PANEL MOUNT
- NO DRILLING REQUIRED

**PART#:** IB-P159/P258 C&J



Item	QTY	Description	Item	QTY	Description
1#	6	Mounting Brackets	3#	18	M8X1.25 Nylon Lock Nuts
2#	18	M8 Large Flat Washers			

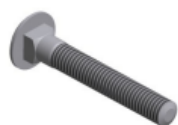


2 #



3 #

Hardware Package B (For Step Bar Installation)					
Item	QTY	Description	Item	QTY	Description
1#	12	M8X1.25-35mm Carriage Bolts	3#	12	M8 Nylon Lock Nuts
2#	12	M8 Large Flat Washers	4#	6	Sliders (Packed with Mounting Brackets)



1 #



2 #



3 #

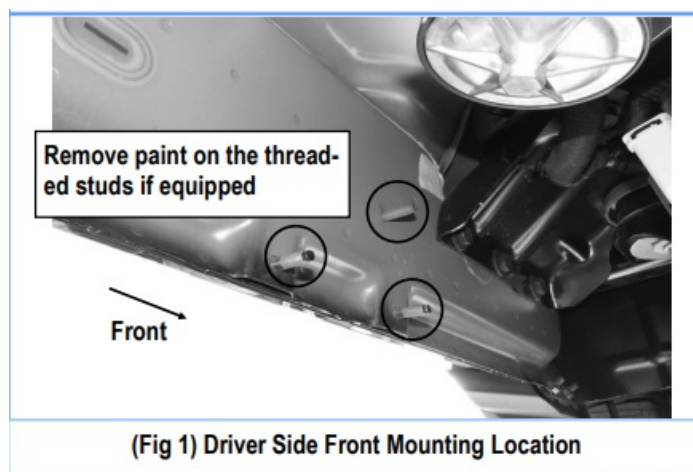


4 #

## INSTALLATION AND USING INSTRUCTION

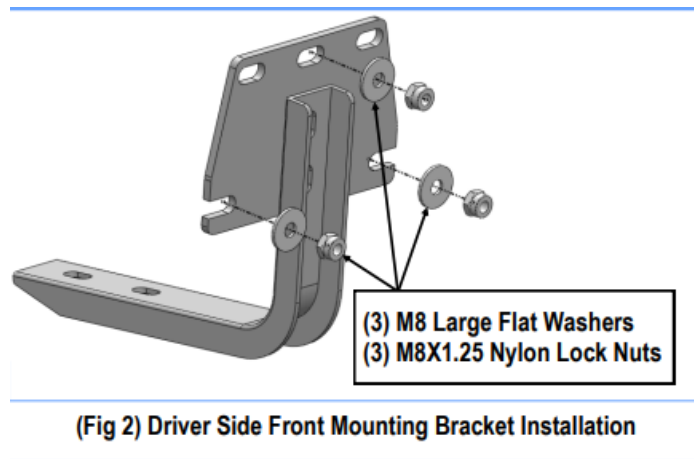
- **STEP 1:** Start the installation under the driver's side of the vehicle. Locate the front (3) factory studs along the inner side of the body pan-el, (Fig 1).

**NOTE:** Use a wire brush to remove paint on the threaded studs if equipped.

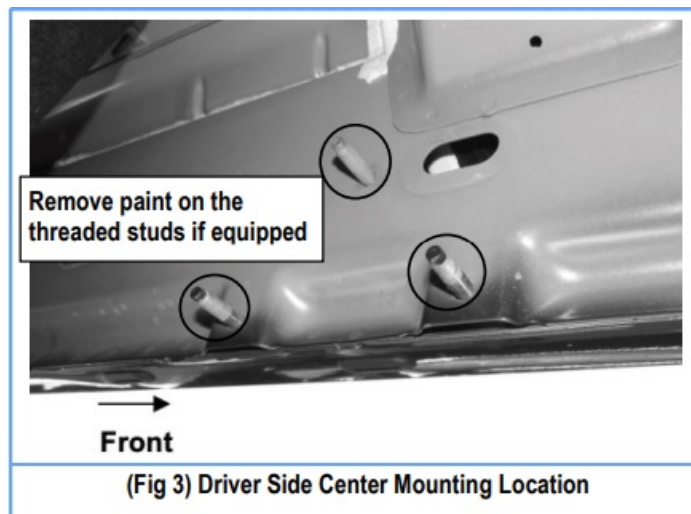


- **STEP 2:** Select (1) Mounting Bracket. Attach the Mounting Bracket to the (3) factory studs on the Driver Side Front Mounting Bracket Location with (3) M8 Large Flat Washers and (3) M8X1.25 Ny-lon Lock Nuts, (Fig 2). Do not fully tighten the hardware at this time.

**NOTE:** All (6) Mounting Brackets are universal.



**STEP 3:** Move to Driver side Center and Rear mounting locations, (Figs 3-4). Repeat Steps 1-2 to install Driver Center Mounting bracket and Driver Rear Mounting bracket. Do not fully tighten hardware at this time.

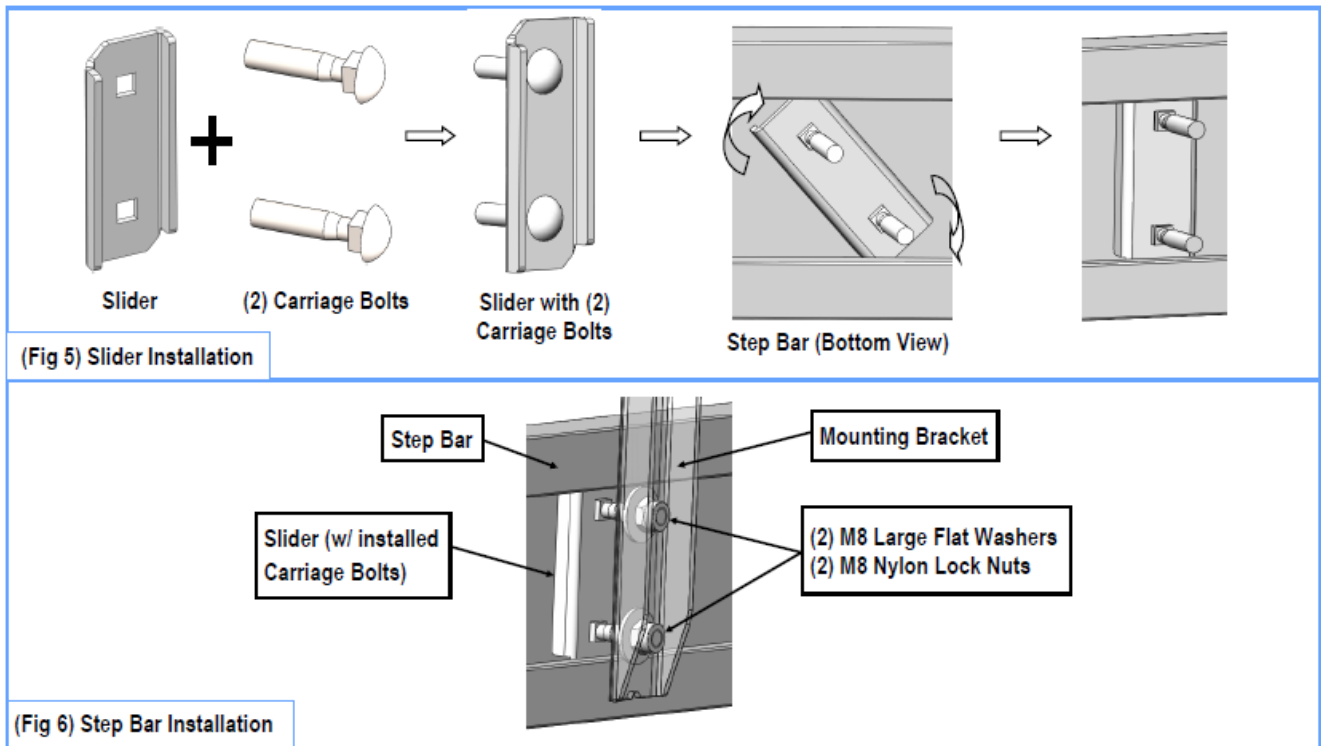


- **STEP 5:** Once all (3) Driver side mounting brackets are installed, then proceed to the Step Bar installation. (Figs 5 & 6)
    - Select (1) Slider and (2) M8X1.25-35mm Carriage Bolts;
    - Install (2) M8X1.25-35mm Carriage Bolts in (1) Slider.
    - Slide the Slider (with carriage bolts) to the Step Bar.
    - Repeat to install the other (2) sliders to the step bar.
    - Attach the Step Bar (with the Sliders) onto the installed mounting brackets. Position the Sliders to the installed brackets. Secure the Step Bar to the installed Brackets by using (6) M8 Large Flat Washers and (6) M8 Nylon Lock Nuts and (3) Sliders, (Fig 6). Do not fully tighten the hardware at this time.
- Note:** The Sliders are packed with the Mounting Bracket.

Level and adjust the Step Bar and fully tighten all hardware. Repeat Steps 1-5 for the other side Step Bar installation. The installation is completed!!!

### Attention

- Do periodic inspections to the installation to make sure that all hardware is secure and tight.
- To protect your bars/boards, please use mild soap/non-abrasive products for cleaning only.



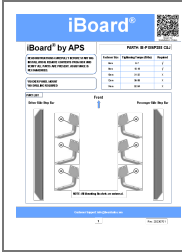
Customer Support: [info@iboardauto.com](mailto:info@iboardauto.com)

### Frequently Asked Questions

- **Q: Are the mounting brackets universal?**
  - A: Yes, all (6) mounting brackets are universal.
- **Q: What should I do if a part is missing from the hardware package?**
  - A: If a part is missing, please contact customer support at [info@iboardauto.com](mailto:info@iboardauto.com) for assistance.
- **Q: Can I install the step bars without professional assistance?**
  - A: While professional assistance is recommended, the installation can be done following the provided instructions carefully.

---

### Documents / Resources



**[iBoard IB-P159 Running Boards Style](#)** [pdf] Instruction Manual  
IB-P159 Running Boards Style, IB-P159, Running Boards Style, Boards Style, Boards Style, Style

References

- [User Manual](#)

[Manuals+](#), [Privacy Policy](#)

This website is an independent publication and is neither affiliated with nor endorsed by any of the trademark owners. The "Bluetooth®" word mark and logos are registered trademarks owned by Bluetooth SIG, Inc. The "Wi-Fi®" word mark and logos are registered trademarks owned by the Wi-Fi Alliance. Any use of these marks on this website does not imply any affiliation with or endorsement.