

iBoard IB P123C Running Boards Style



iBoard IB-P123C Running Boards Style Instruction Manual

[Home](#) » [iBoard](#) » iBoard IB-P123C Running Boards Style Instruction Manual 

Contents

- [1 iBoard IB-P123C Running Boards Style](#)
- [2 Specifications](#)
- [3 Product Parts List](#)
- [4 Product Usage Instructions](#)
- [5 PART LIST](#)
- [6 INSTALLATION](#)
- [7 Frequently Asked Questions](#)
- [8 Documents / Resources](#)
 - [8.1 References](#)
- [9 Related Posts](#)

iBoard®

iBoard IB-P123C Running Boards Style



Specifications

- **Part Number:** IB-P123C&J
- Rocker Panel Mount
- No drilling required

Product Parts List

Item	Qty	Description
1#	2	Driver / Passenger Front Mounting Brackets

Product Usage Instructions

- **Step 1: Locate Threaded Holes**
 - Starting from the driver side of the vehicle, locate the factory-threaded holes at the bottom of the outer frame channel and the single-threaded hole at the bottom of the inner frame channel.
- **Step 2: Assemble the Front Mounting Bracket**
 - Assemble the Driver Front Mounting Bracket and Driver Front Support Bracket using the provided bolts and nuts. Do not fully tighten the hardware at this time.

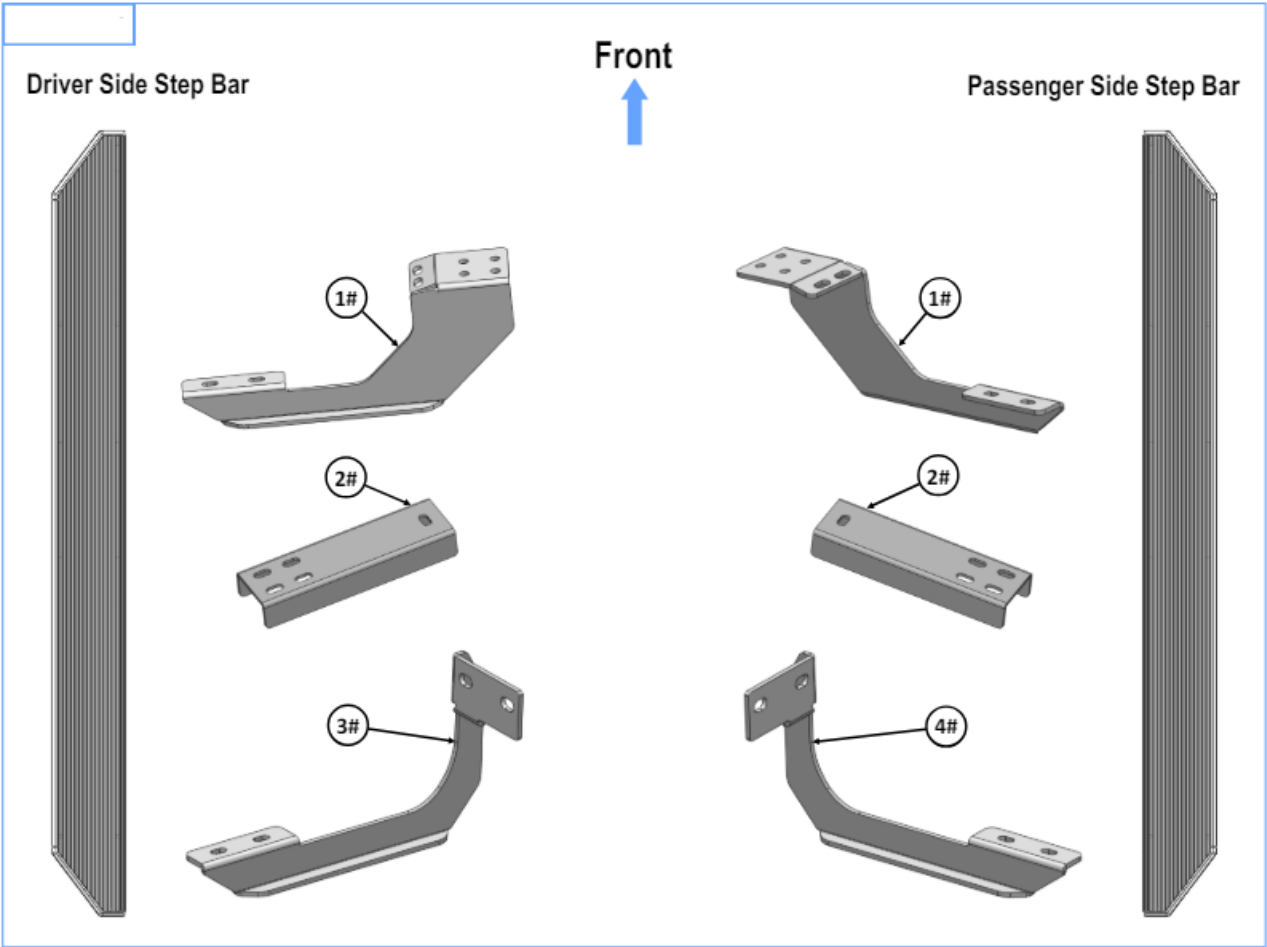
READ INSTRUCTIONS CAREFULLY BEFORE START ING INSTALLATION. REMOVE CONTENTS FROM BOX AND VERIFY ALL PARTS ARE PRESENT. ASSISTANCE IS RECOMMENDED.

- ROCKER PANEL MOUNT
- NO DRILLING REQUIRED

PART#: IB-P123C&J

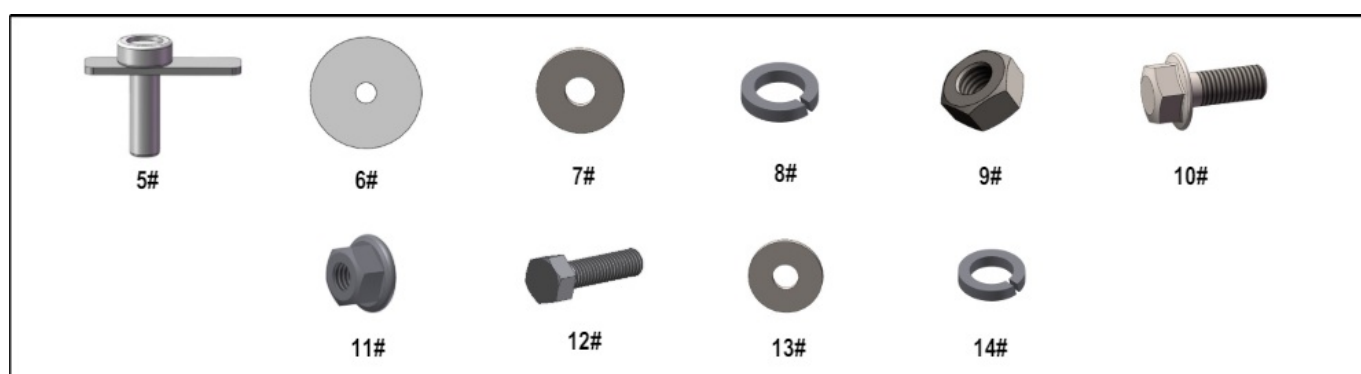
Fastener Size	Tightening Torque (ft-lbs)	Required
6mm	6-7	X
8mm	16-18	√
10mm	31-32	√
12mm	56-58	X
14mm	92-94	X

PART LIST

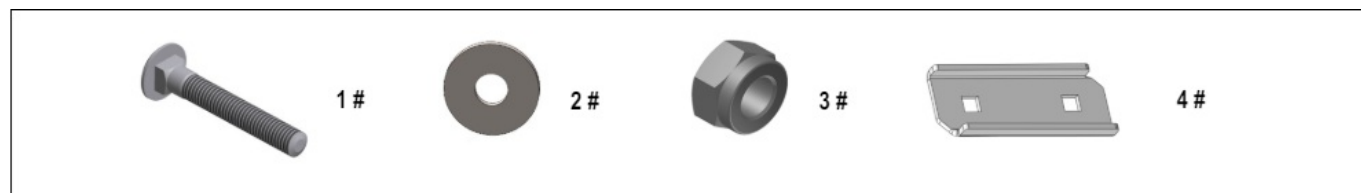


Hardware Package A (For Bracket Installation)

Item	Qty	Description	Item	Qty	Description
1#	2	Driver / Passenger Front Mounting Brackets	8#	4	M10 Lock Washers
2#	2	Driver / Passenger Front Support Brackets	9#	4	M10X1.5 Hex Nuts
3#	1	Driver Rear Mounting Bracket	10#	8	M8X1.25-20mm Hex Flange Bolts
4#	1	Passenger Rear Mounting Bracket	11#	8	M8X1.25 Hex Flange Nuts
5#	4	M10X1.5-35mm Bolt Plates	12#	6	M8X1.25-30mm Hex Bolts
6#	4	M10 Plastic Washers	13#	6	M8 Flat Washers
7#	4	M10 Flat Washers	14#	6	M8 Lock Washers



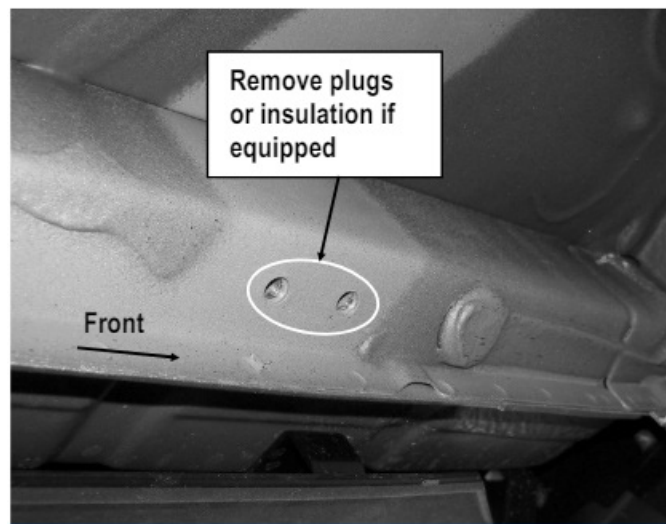
Hardware Package B (For Step Bar Installation)



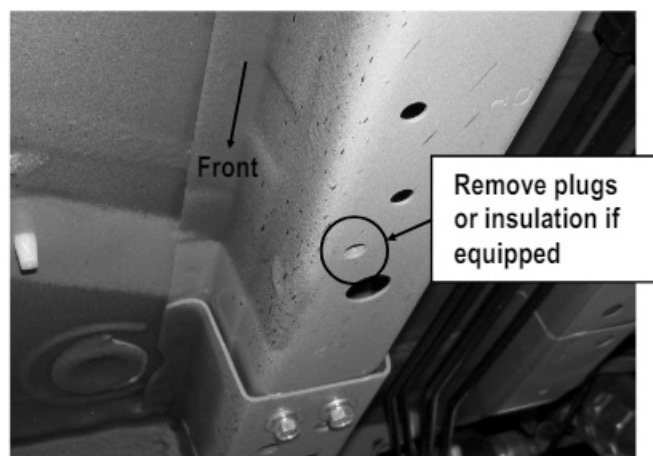
INSTALLATION

STEP 1: Starting from the driver side of the vehicle, locate the (2) factory-threaded holes at the bottom of the outer frame channel and the single-threaded hole at the bottom of the inner frame channel, (Fig 1A & 1B).

NOTE: The threaded holes may be filled with plastic plugs or filled with insulation. Remove plugs or insulation before proceeding.

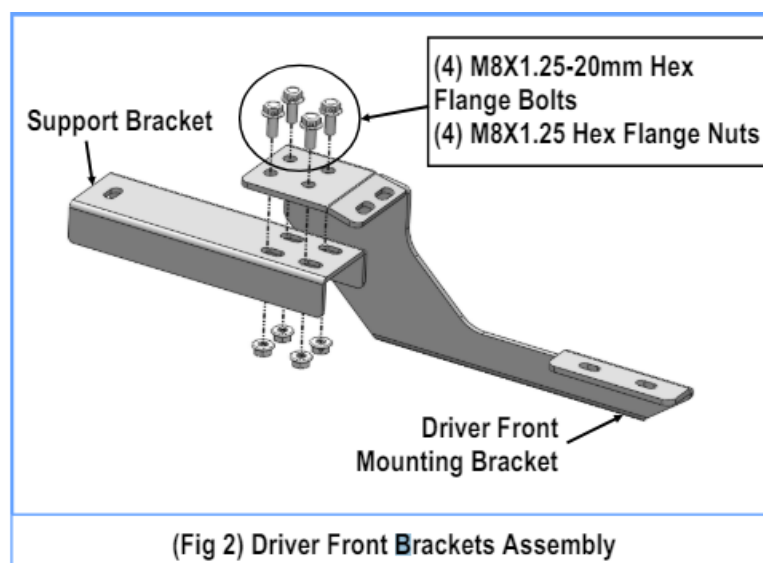


(Fig 1A) Driver Side Front Mounting Location (Two Threaded holes on the outer frame channel)



(Fig 1B) Driver Side Front Support Mounting Location (One threaded hole on the inner frame channel)

STEP 2: Assemble (1) Driver Front Mounting Bracket and (1) Driver Front Support Bracket together with the included (4) M8X1.25-20mm Hex Flange Bolts and (4) M8X1.25 Hex Flange Nuts, (Fig 2). Do not fully tighten hardware at this time.

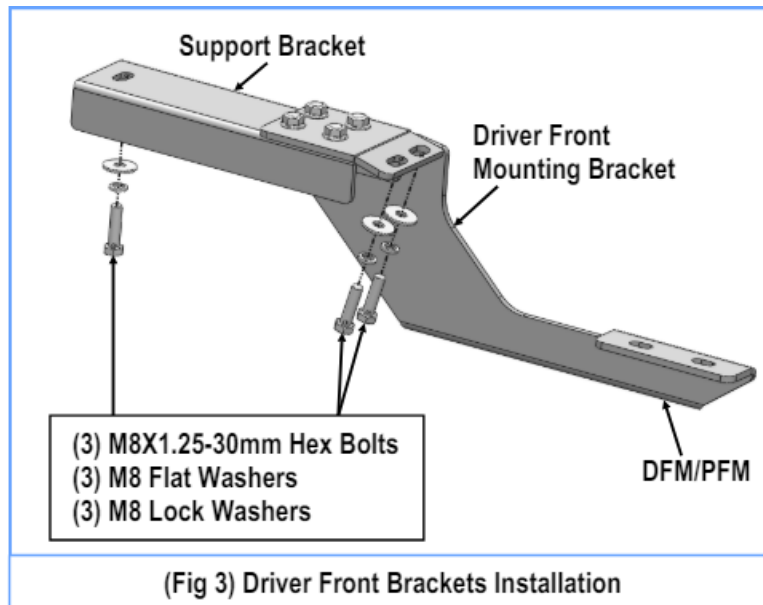


(Fig 2) Driver Front Brackets Assembly

STEP 3 : Position the assembled driver front brackets to the vehicle. At-tach the Driver Front Mounting Bracket to the (2) threaded holes (Fig 1A) by using the provided (2) M8X1.25-30mm Hex Bolts, (2) M8 Lock Washers and (2)

M8 Flat Washers, (Fig 3).

Line up the slot at the end of the Support Bracket with the threaded hole on the inner frame channel. Bolt the Support Bracket to the threaded hole on frame channel (Fig 1B) with (1) M8X1.25-30mm Hex Bolt, (1) M8 Lock Washer and (1) M8 Flat Washer, (Fig 3). Do not fully tighten the hardware at this time.

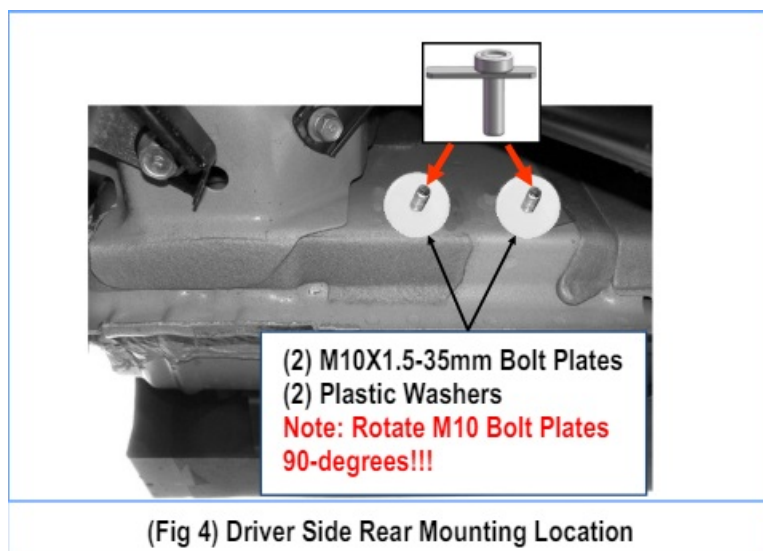


STEP 4

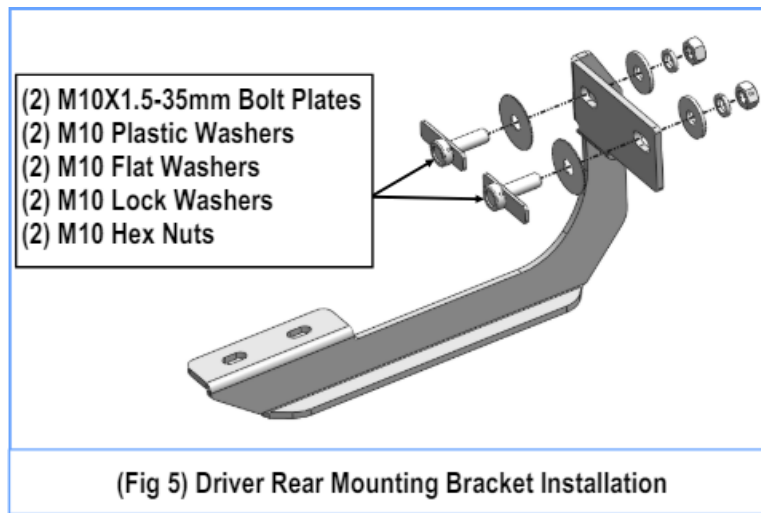
Move to the Driver Side Rear Mounting Location on the body panel, (Fig 4).

Thread (2) M10 Plastic Washers onto (2) M10X1.5-35mm Bolt Plates. Insert the M10 Bolt Plates with Plastic Washers into the oval hole, and thread the Plastic Washers down against the body panel, (Fig 4). Rotate the M10 Bolt Plates 90 degrees to across the slot in the body panel.

IMPORTANT: The Plastic Washer is designed to prevent the M10 Bolt Plate from falling into the body cavity within the Bracket installation.

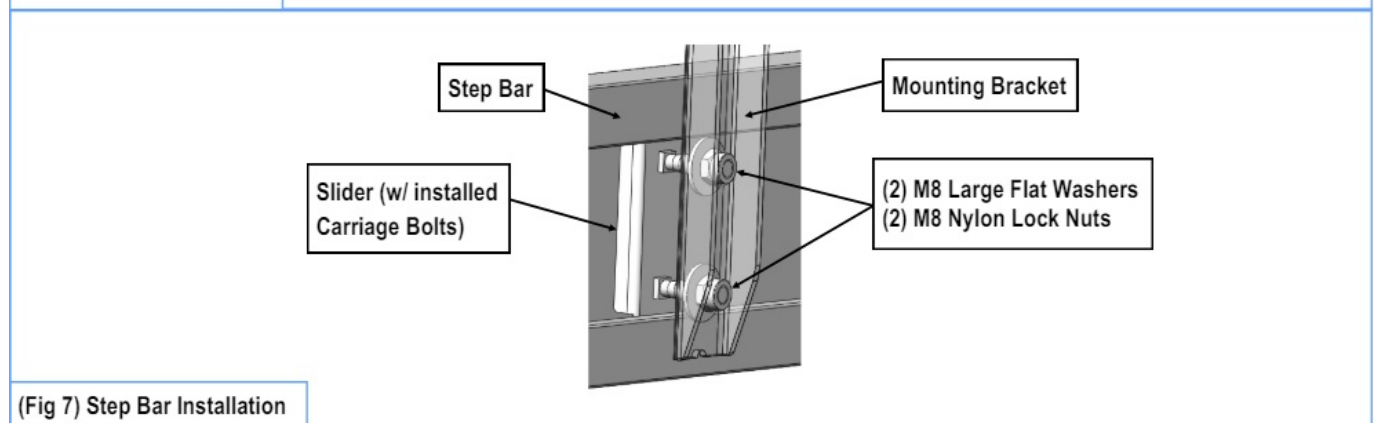
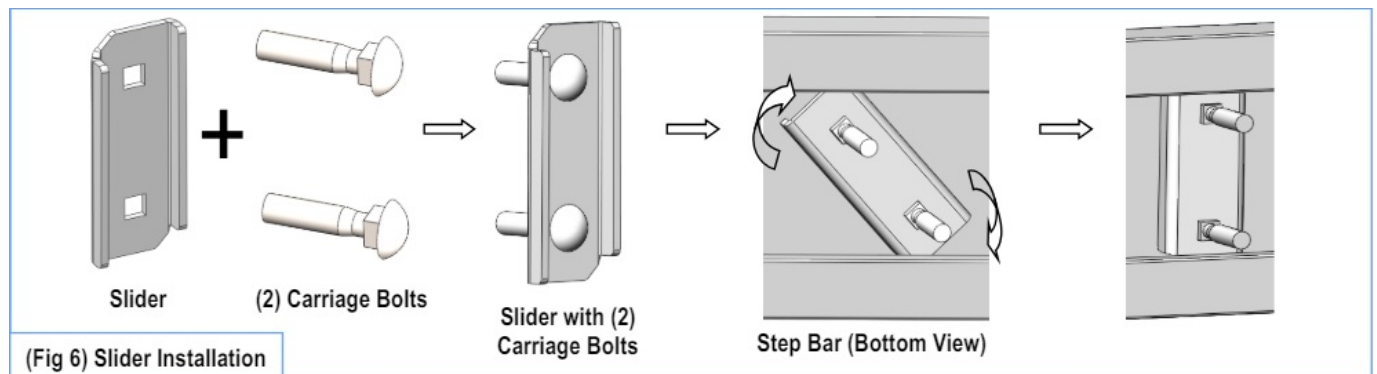


STEP 5: Select (1) Driver Rear Mounting Bracket. Hang the Bracket onto the installed (2) M10 Bolt Plates and secure with (2) M10 Flat Washers, (2) M10 Lock Washers and (2) M10 Hex Nuts, (Fig 5). Do not fully tighten hardware at this time.



STEP 6: Once all (2) Driver side mounting brackets are installed, then proceed to the Step Bar installation. (Figs 6 & 7)

1. Select (1) Slider and (2) M8X1.25-35mm Carriage Bolts;
2. Install (2) M8X1.25-35mm Carriage Bolts in (1) Slider.
3. Slide the Slider (with carriage bolts) to the Step Bar.
4. Repeat to install the other (1) slider to the step bar.
5. Attach the Step Bar (with the Sliders) to the installed mounting brackets. Position the Sliders to the installed brackets. Secure the Step Bar to the installed Brackets by using (4) M8 Large Flat Washers and (4) M8 Nylon Lock Nuts and (2) Sliders, (Fig 7). Do not fully tighten the hardware at this time.



Note: The Sliders are packed with the Mounting Brackets.

- Level and adjust the Step Bar and fully tighten all hardware.
- Repeat Steps 1-6 for the other side Step Bar installation. The installation is completed!!!

Attention

- Do periodic inspections to the installation to make sure that all hardware is secure and tight.
- To protect your bars/boards, please use mild soap/non-abrasive products for cleaning only.

Customer Support: info@iboardauto.com

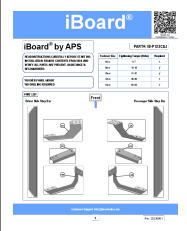
Scan Installation Vedio



Frequently Asked Questions

- **Q: Is drilling required for installation?**
 - A: No, drilling is not required as this product is designed for rocker panel mount without drilling.
 - **Q: What is the recommended tightening torque for different fastener sizes?**
 - A: The recommended tightening torque is as follows:
 - **6mm:** 6-7 ft-lbs
 - **8mm:** 16-18 ft-lbs
 - **10mm:** 31-32 ft-lbs
 - **12mm:** 56-58 ft-lbs
 - **14mm:** 92-94 ft-lbs
-

Documents / Resources

	<p>iBoard IB-P123C Running Boards Style [pdf] Instruction Manual IB-P123C Running Boards Style, Running Boards Style, Boards Style, Style</p>
---	---

References

- [User Manual](#)

