



iBoard IB-P097 Black Running Boards Style Installation Guide

[Home](#) » [iBoard](#) » iBoard IB-P097 Black Running Boards Style Installation Guide 

Contents

- [1 iBoard IB-P097 Black Running Boards Style](#)
- [2 PART LIST](#)
- [3 Hardware Package A \(For Bracket Installation\)](#)
- [4 Hardware Package B \(For Step Bar Installation\)](#)
- [5 Installation](#)
- [6 Documents / Resources](#)
 - [6.1 References](#)

iBoard®

iBoard IB-P097 Black Running Boards Style

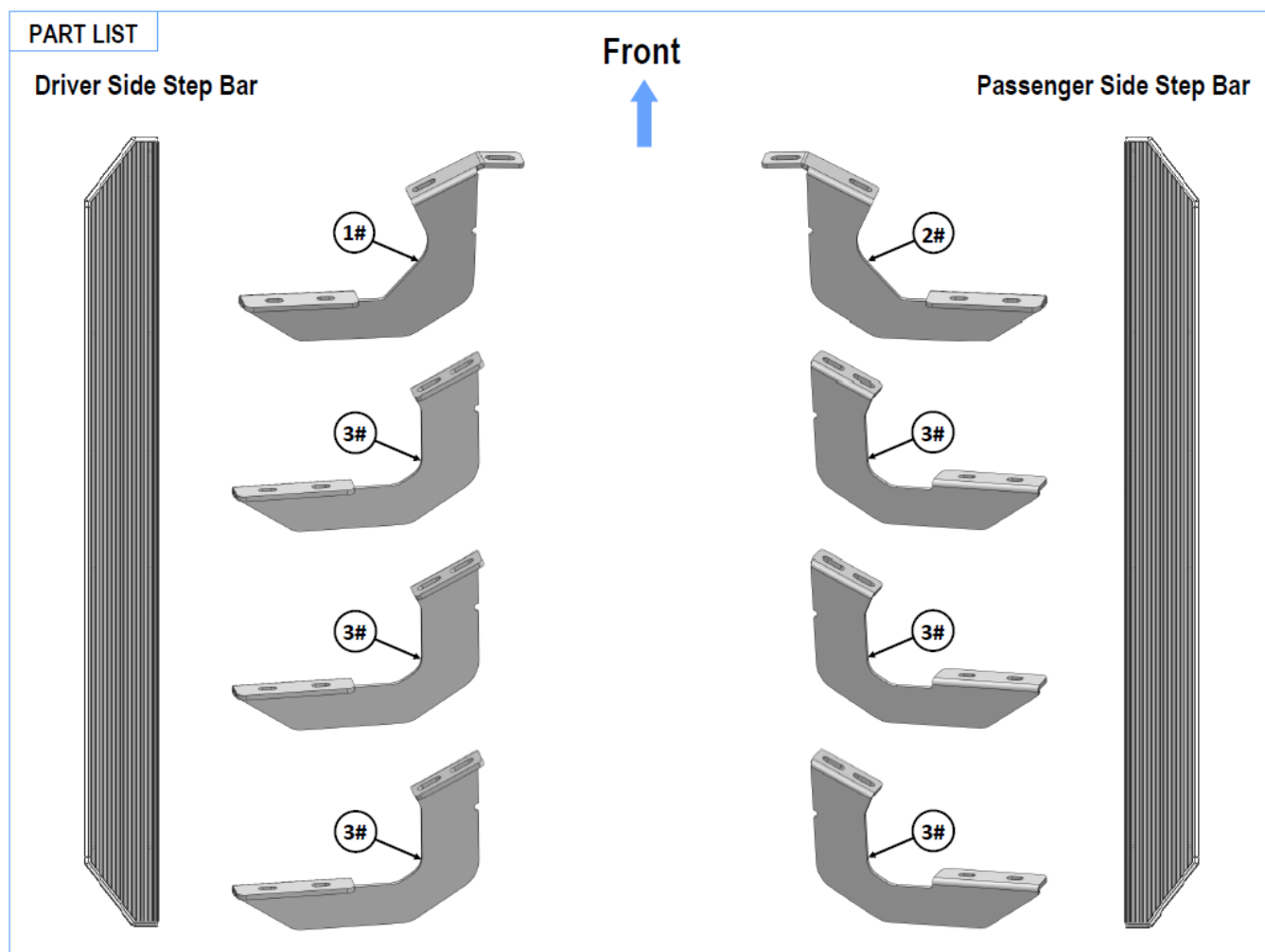


READ INSTRUCTIONS CAREFULLY BEFORE START ING INSTALLATION. REMOVE CONTENTS FROM BOX AND VERIFY ALL PARTS ARE PRESENT. ASSISTANCE IS RECOMMENDED.

*ROCKER PANEL MOUNT
*NO DRILLING REQUIRED






PART LIST



Fastener Size	Tightening Torque (ft-lbs)	Required
6mm	6-7	X
8mm	16-18	√
10mm	31-32	X
12mm	56-58	X
14mm	92-94	X

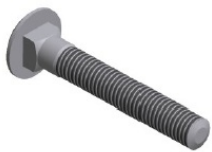
Hardware Package A (For Bracket Installation)

Hardware Package A (For Bracket Installation)					
Item	Qty	Description	Item	Qty	Description
1#	1	Driver Front Mounting Bracket	4#	16	M8X1.25-30mm Hex Bolts
2#	1	Passenger Front Mounting Bracket	5#	16	M8 Flat Washers
3#	6	Mounting Brackets	6#	16	M8 Lock Washers
<div> <div>  <p>4 #</p> </div> <div>  <p>5 #</p> </div> <div>  <p>6 #</p> </div> </div>					

Hardware Package B (For Step Bar Installation)

Hardware Package B (For Step Bar Installation)

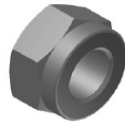
Item	QTY	Description	Item	QTY	Description
1#	16	M8X1.25-35mm Carriage Bolts	3#	16	M8 Nylon Lock Nuts
2#	16	M8 Large Flat Washers	4#	8	Sliders (Packed with Mounting Brackets)



1 #



2 #



3 #



4 #

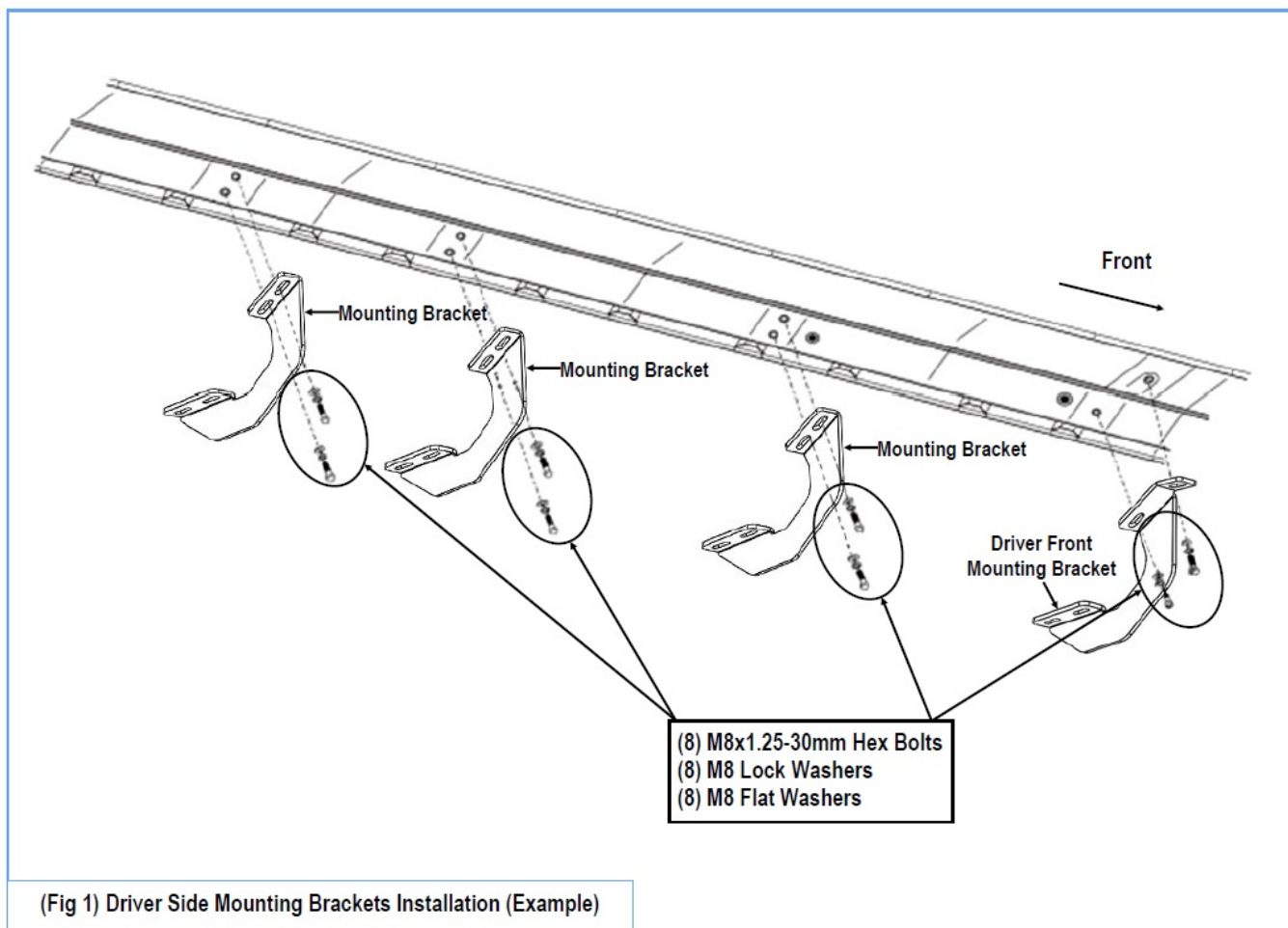
Installation

STEP 1

Start installation from the driver side of the vehicle. Select the Driver Front Mounting Bracket. Attach the Bracket to the vehicle using the included (2) M8x1.25-30mm Hex Bolts, (2) M8 Lock Washers and (2) M8 Flat Washers, (Fig 1). Do not fully tighten hardware at this time.

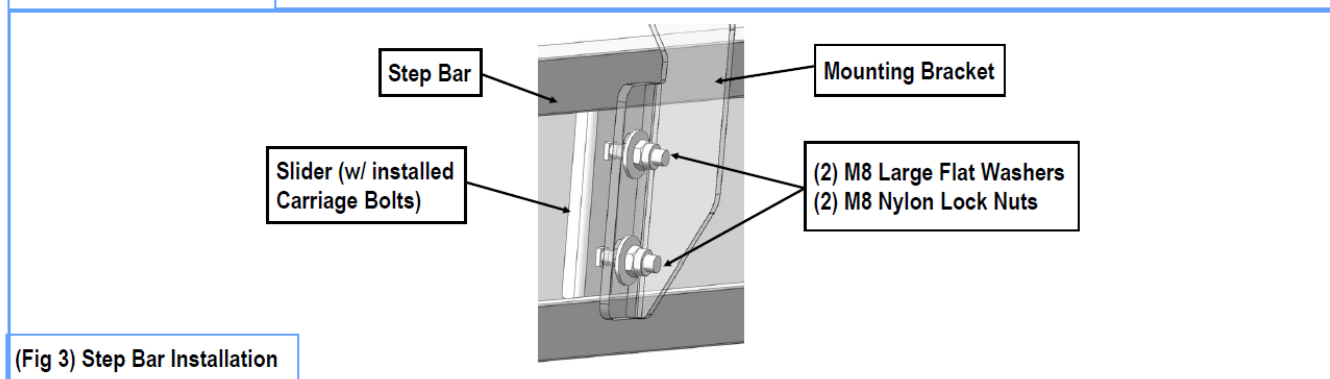
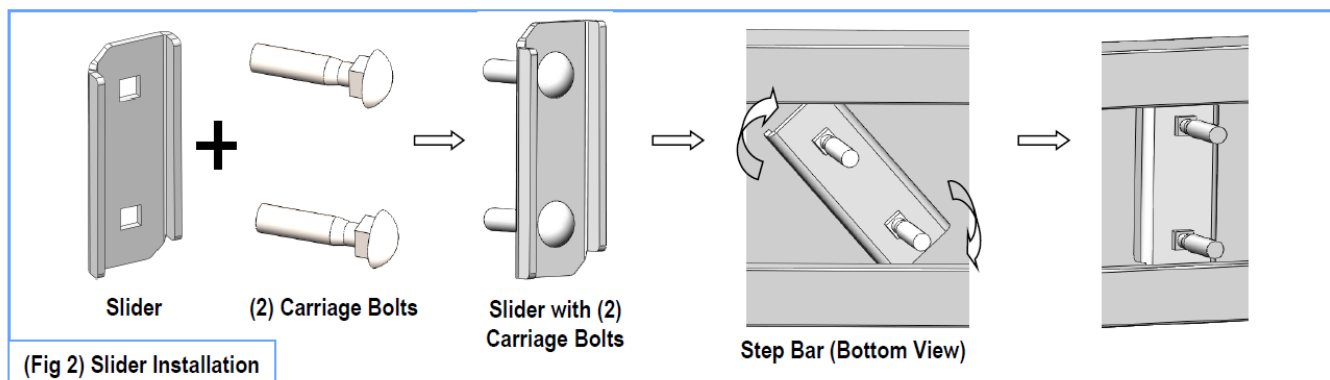
STEP 2

Move to the driver side center, center 1 and rear mounting locations. Repeat Step 1 to install the Driver Center & Center 1 & Rear Mounting Brackets, (Fig 1).



STEP 3

Once all (4) Driver side mounting brackets are installed, then proceed to the Step Bar installation. (Figs 2 & 3)



1. Select (1) Slider and (2) M8X1.25-35mm Carriage Bolts;
2. Install (2) M8X1.25-35mm Carriage Bolts in (1) Slider.

3. Slide the Slider (with carriage bolts) to the Step Bar.
4. Repeat to install the other (3) sliders to the step bar.
5. Attach the Step Bar (with the Sliders) onto the installed mounting brackets. Position the Sliders to the installed brackets. Secure the Step Bar to the installed Brackets by using (8) M8 Large Flat Washers and (8) M8 Nylon Lock Nuts and (4) Sliders, (Fig 3). Do not fully tighten hardware at this time.

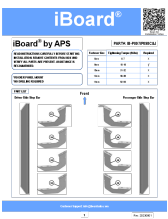
Note: The Sliders are packed with the Mounting Bracket.
Level and adjust the Step Bar and fully tighten all hardware. Repeat Steps 1-3 for the other side Step Bar installation. The installation is completed!!!

Attention

Do periodic inspections to the installation to make sure that all hardware is secure and tight.
In order to protect your bars/boards, please use mild soap/non-abrasive products for cleaning only.

Customer Support: info@iboardauto.com

Documents / Resources

	<p>iBoard IB-P097 Black Running Boards Style [pdf] Installation Guide IB-P097, P098C, IB-P097 Black Running Boards Style, IB-P097, Black Running Boards Style, Running Boards Style, Boards Style</p>
---	---

References

- [User Manual](#)

[Manuals+](#), [Privacy Policy](#)

This website is an independent publication and is neither affiliated with nor endorsed by any of the trademark owners. The "Bluetooth®" word mark and logos are registered trademarks owned by Bluetooth SIG, Inc. The "Wi-Fi®" word mark and logos are registered trademarks owned by the Wi-Fi Alliance. Any use of these marks on this website does not imply any affiliation with or endorsement.