



## iBoard IB-228C Running Board Side Step Bars Installation Guide

[Home](#) » [iBoard](#) » iBoard IB-228C Running Board Side Step Bars Installation Guide 

### Contents

- [1 iBoard IB-228C Running Board Side Step Bars](#)
- [2 INTRODUCTION](#)
- [3 PART LIST](#)
- [4 Customer Support](#)
- [5 Documents / Resources](#)
  - [5.1 References](#)
- [6 Related Posts](#)

**iBoard IB-228C Running Board Side Step Bars**



**INTRODUCTION**

READ INSTRUCTIONS CAREFULLY BEFORE START ING INSTALLATION. REMOVE CONTENTS FROM BOX AND VERIFY ALL PARTS ARE PRESENT. ASSISTANCE IS RECOMMENDED

- \*ROCKER PANEL MOUNT
- \*NO DRILLING REQUIRED

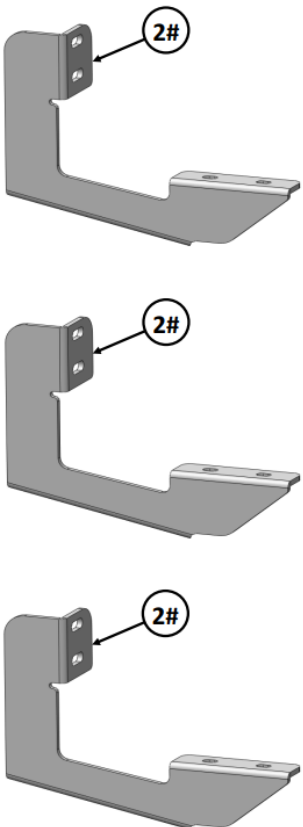
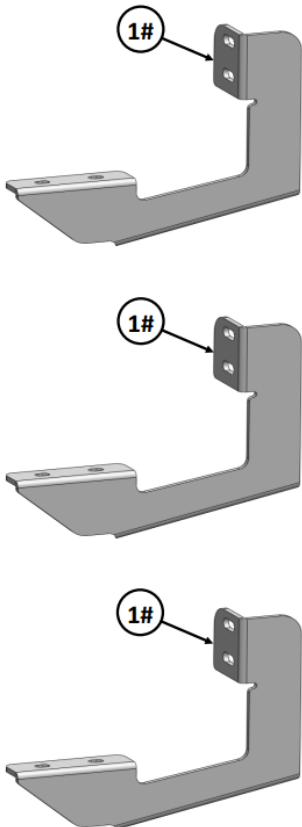
Fastener Size	Tightening Torque (ft-lbs)	Required
6mm	6-7	X
8mm	16-18	√
10mm	31-32	X
12mm	56-58	X
14mm	92-94	X

**PART LIST**



**Driver Side Step Bar**

**Front**  
↑

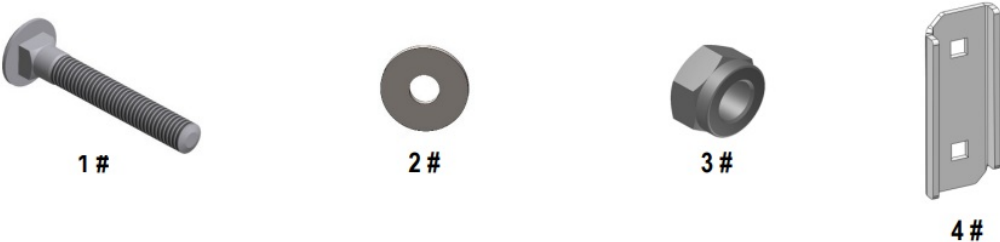
**Passenger Side Step Bar**



Mounting Bracket List				
Description	Item	QTY	Description	
Driver Front/Center/Rear Mounting Brackets	2#	3	Passenger Front/Center/Rear Mounting Brackets	

Hardware Package A (For Bracket Installation)				
Description	Item	QTY	Description	
M8 Large Flat Washers	2#	12	M8X1.25 Nylon Lock Nuts	
<div> 1#</div> <div> 2#</div>				

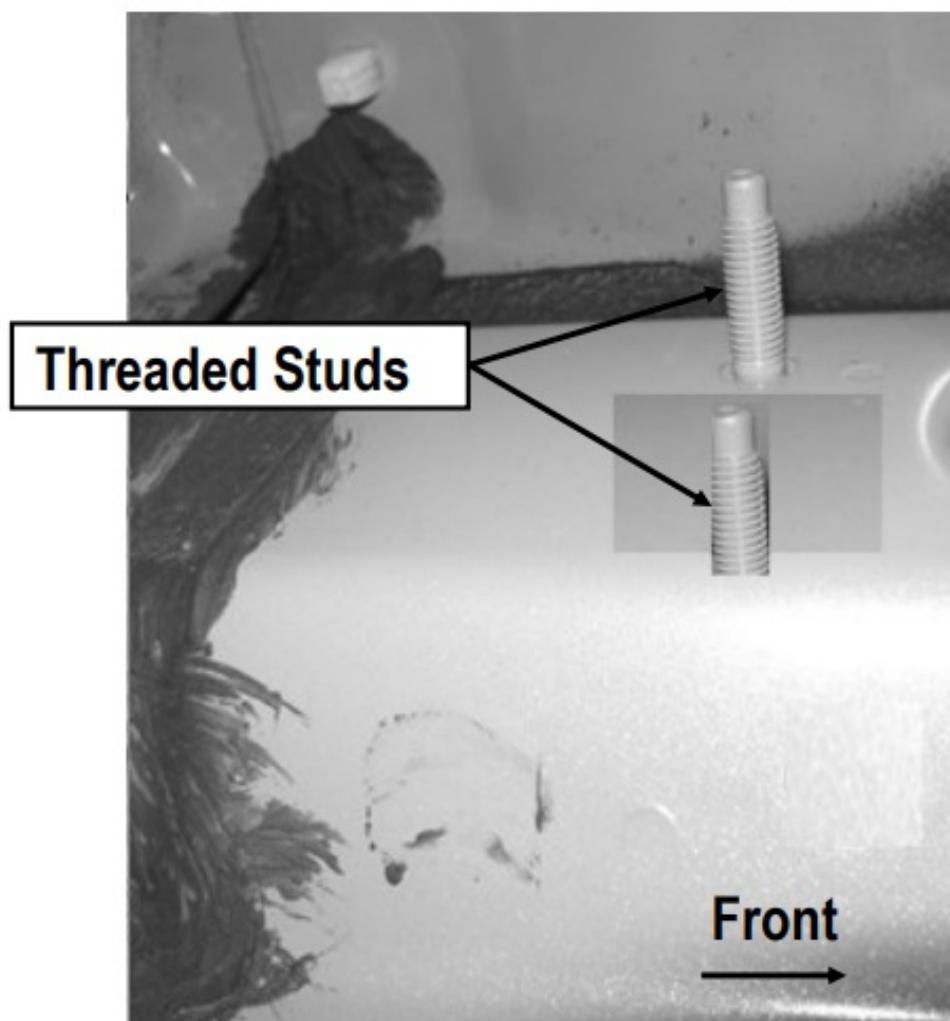
## Hardware Package B (For Stainless Steel Step Bar Installation)

Description	Item	
M8X1.25-35mm Carriage Bolts	3#	
M8 Large Flat Washers	4#	
 <div><div>1 #</div><div>2 #</div><div>3 #</div><div>4 #</div></div>		

### STEP 1

Start installation from the driver side front of the vehicle. Locate the (2) factory threaded studs located on the side of the inner body panel, (Fig 1).

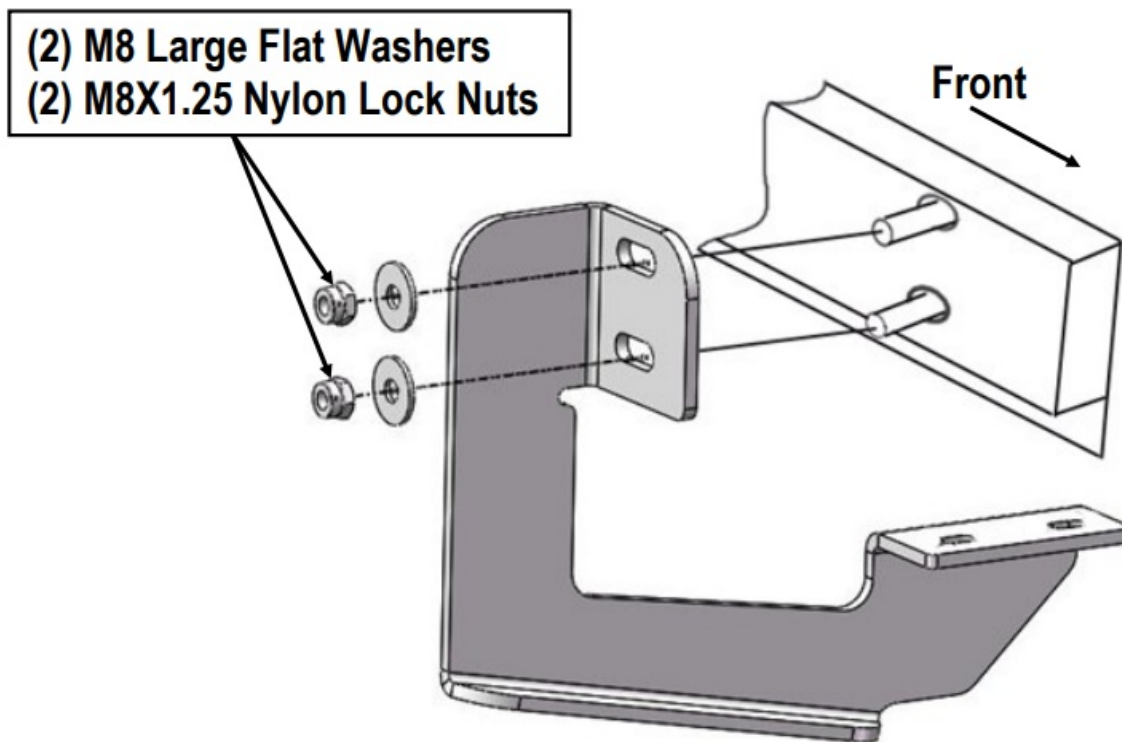
(Fig 1) Driver Side Front Mounting Location



## STEP 2

Select the Driver Front Mounting Bracket. Attach to the (2) factory threaded studs with (2) M8 Large Flat Washers and (2) M8X1.25 Nylon Lock Nuts, (Fig 2). Do not fully tighten hardware at this time.

### (Fig 2) Driver Side Front Mounting Bracket Installation



## STEP 3

Move to the center & rear mounting location. Repeat Steps 1 – 2 for Driver Center & Rear Mounting Brackets.

**Note:** All (3) Driver Side Mounting Brackets are universal.

## STEP 4

Once all (3) Driver side mounting brackets are installed, then proceed to the Step Bar installation. (Figs 3 & 4)

1. Select (1) Slider and (2) M8X1.25-35mm Carriage Bolts;
2. Install (2) M8X1.25-35mm Carriage Bolts in (1) Slider.
3. Slide the Slider (with carriage bolts) to the Step Bar.
4. Repeat to install the other (2) sliders to the step bar.
5. Attach the Step Bar (with the Sliders) onto the installed mounting brackets. Position the Sliders to the installed brackets. Secure the Step Bar to the installed Brackets by using (6) M8 Large Flat Washers and (6) M8 Nylon Lock Nuts and (3) Sliders, (Fig 4). Do not fully tighten hardware at this time.

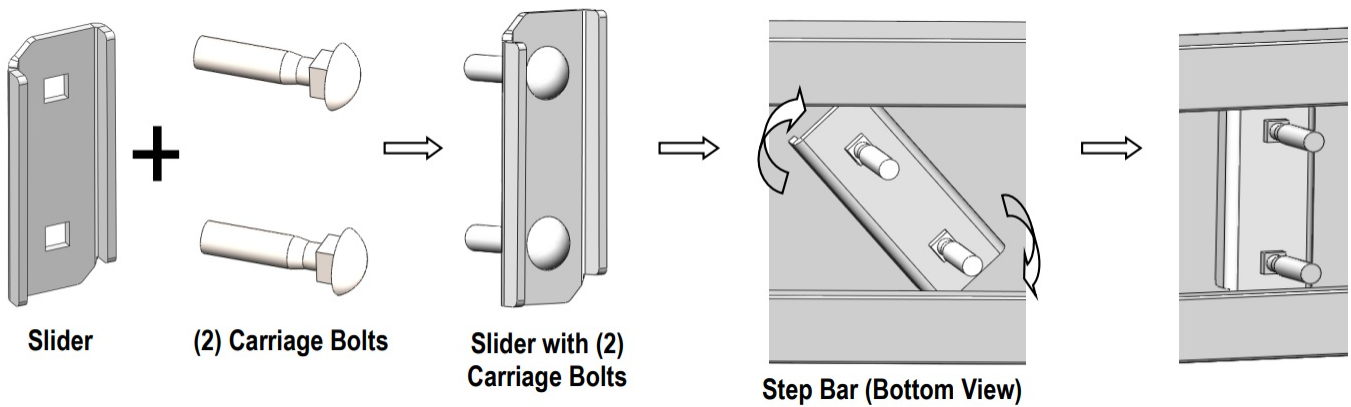
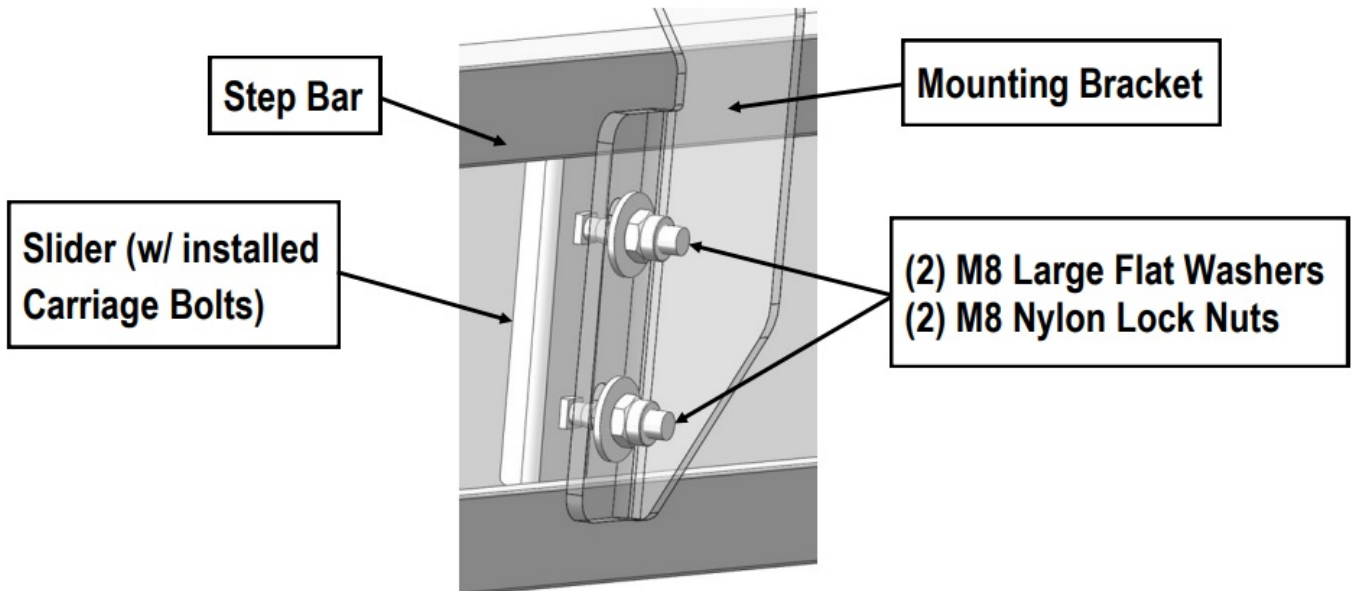
**Note:** The Sliders are packed with the Step Bars.

Level and adjust the Step Bar and fully tighten all hardware. Repeat Steps 1-4 for the other side Step Bar installation. The installation is completed!!!

**NOTE:** All (3) Passenger Side Mounting Brackets are universal.

**Attention**

Do periodic inspections to the installation to make sure that all hardware is secure and tight.  
In order to protect your bars/boards, please use mild soap/non-abrasive products for cleaning only

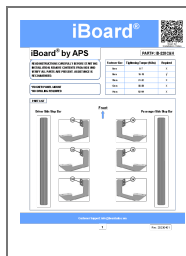
**(Fig 3) Slider Installation****(Fig 4) Step Bar Installation****Customer Support**

[info@iboardauto.com](mailto:info@iboardauto.com)





## Documents / Resources



### [iBoard IB-228C Running Board Side Step Bars](#) [pdf] Installation Guide

IB-228C, IB-228H, IB-228C Running Board Side Step Bars, Running Board Side Step Bars, Board Side Step Bars, Side Step Bars, Bars

## References

- [User Manual](#)

### [Manuals+](#), [Privacy Policy](#)

This website is an independent publication and is neither affiliated with nor endorsed by any of the trademark owners. The "Bluetooth®" word mark and logos are registered trademarks owned by Bluetooth SIG, Inc. The "Wi-Fi®" word mark and logos are registered trademarks owned by the Wi-Fi Alliance. Any use of these marks on this website does not imply any affiliation with or endorsement.