

iBoard®
IB-120C
Electronic
Smart
Interactive
Board



iBoard IB-120C Electronic Smart Interactive Board Installation Guide

[Home](#) » [iBoard](#) » iBoard IB-120C Electronic Smart Interactive Board Installation Guide 

Contents

- [1 iBoard IB-120C Electronic Smart Interactive Board](#)
- [2 Product Usage Instructions:](#)
- [3 PART LIST](#)
- [4 FAQs](#)
- [5 Documents / Resources](#)
 - [5.1 References](#)

iBoard®

iBoard IB-120C Electronic Smart Interactive Board



Specifications

- Part Number: IB-120C&H
- Fastener Sizes: 6mm, 8mm, 10mm, 12mm, 14mm
- Tightening Torque (ft-lbs):
 - 6-7 for 6mm
 - 16-18 for 8mm
 - 31-32 for 10mm
 - 56-58 for 12mm
 - 92-94 for 14mm

Product Usage Instructions:

Step 1: Front Mounting Bracket Installation

Start installation from the driver's side front of the vehicle. Insert one M12 U-Bolt to the back plate as shown in Figures 1 & 2. Attach Stop Spacers and other hardware components.

Step 2: Driver Front Mounting Bracket Installation

Attach the Driver Front Mounting Bracket (DFM) to the M12 U-Bolt using Large Flat Washers, Lock Washers, and Hex Nuts. Do not fully tighten the hardware at this time.

Step 3: Driver Rear Mounting Bracket Installation

Repeat Steps 1-2 for the Driver Rear Mounting Bracket (DRM) installation. Note that Driver Rear Mounting Bracket does not use Stop Spacer and M6X1-30mm Hex Bolt.

Step 4: Step Bar Installation

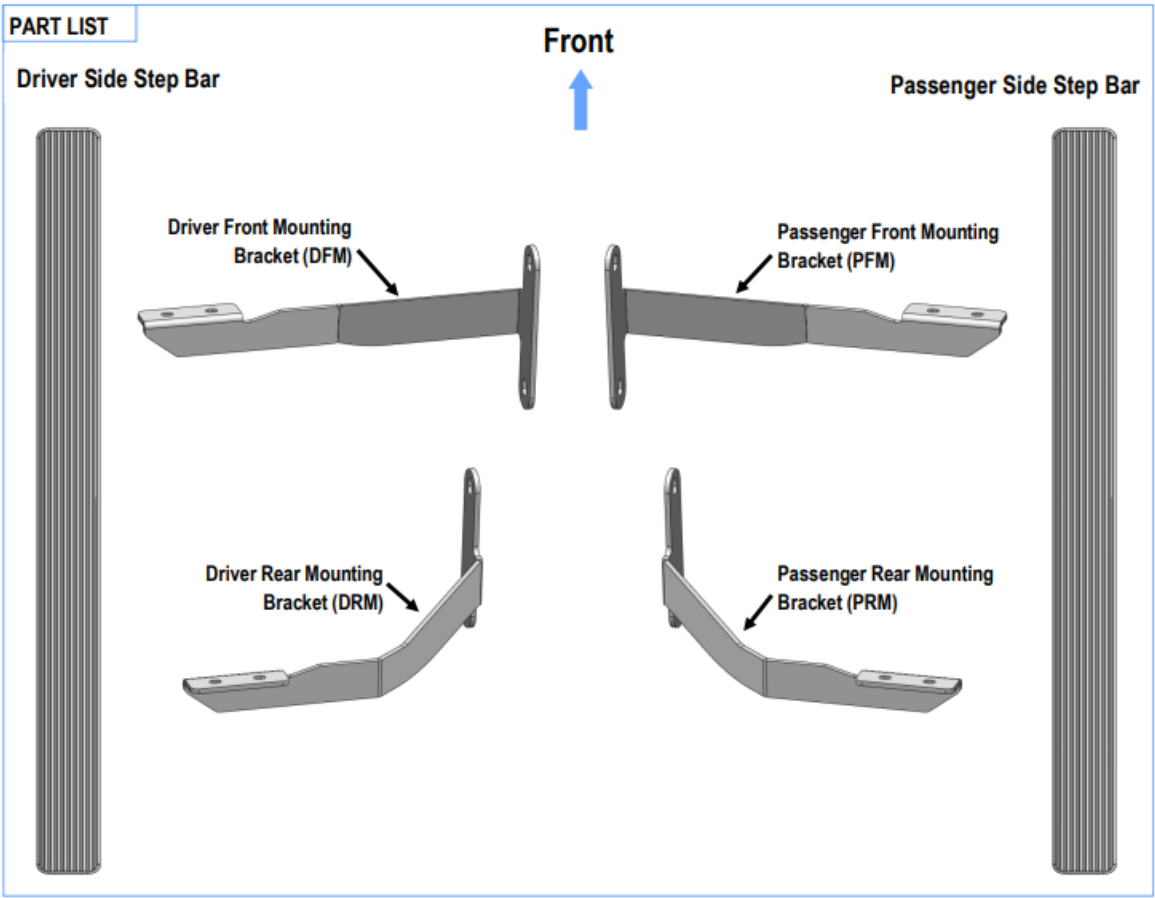
Once all driver side mounting brackets are installed, proceed to the Step Bar installation. Follow the detailed instructions provided in Figures 6 & 7 for attaching the Step Bar with Sliders and securing it to the installed brackets.

Note: The Sliders are packed with the Step Bars. Ensure you level and adjust the Step Bar before fully tightening all hardware.

READ INSTRUCTIONS CAREFULLY BEFORE STARTING INSTALLATION. REMOVE CONTENTS FROM BOX AND VERIFY ALL PARTS ARE PRESENT. ASSISTANCE IS RECOMMENDED.

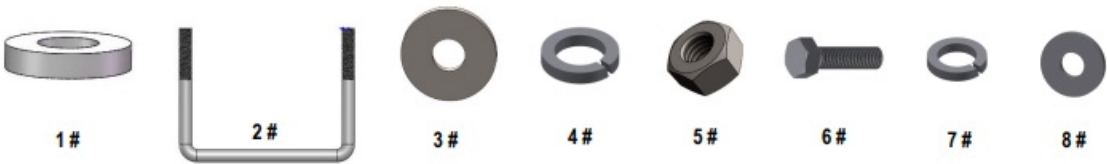
- BODY FRAME MOUNT
- NO DRILLING REQUIRED

PART LIST



Hardware Package A (For Bracket Installation)

Item	QTY	Description	Item	QTY	Description
1#	6	Stop Spacers	5#	8	M12 Hex Nuts
2#	4	M12 U-Bolts	6#	3	M6X1-30mm Hex Bolts
3#	8	M12 Large Flat Washers	7#	3	M6 Lock Washers
4#	8	M12 Lock Washers	8#	3	M6 Large Flat Washers



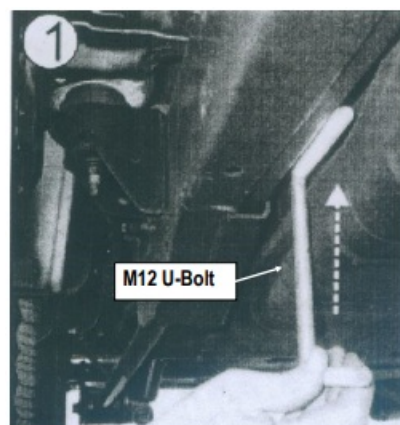
Hardware Package B (For Stainless Steel Step Bar Installation)

Item	QTY	Description	Item	QTY	Description
1#	8	M8X1.25-35mm Carriage Bolts	3#	8	M8 Nylon Lock Nuts
2#	8	M8 Large Flat Washers	4#	4	Sliders (Packed with Step Bars)



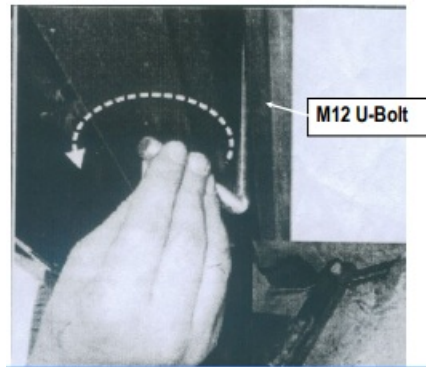
STEP 1

Start installation from the driver side front of the vehicle. Insert
(1) M12 U-Bolt to back plate with as shown, **(Figs 1 & 2)**.



M12 U-Bolt

(Fig 1) M12 U-Bolt Installation

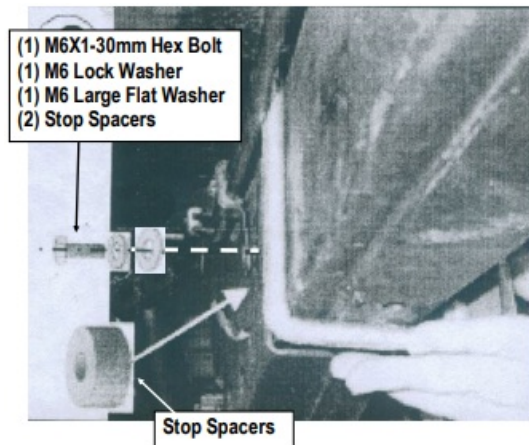


M12 U-Bolt

(Fig 2) M12 U-Bolt Installation

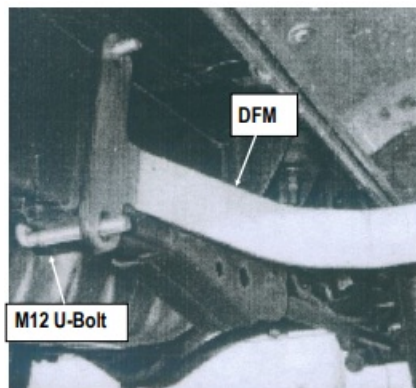
STEP 2

Then, attach (2) Stop Spacers (1) M6X1-30mm Hex Bolt and (1) M6 Lock Washer to the factory hole as shown, (Fig 3).

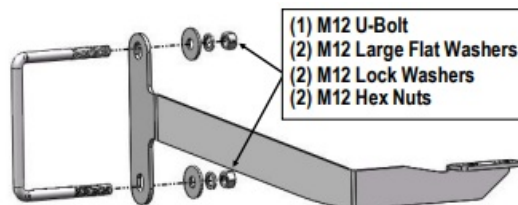


STEP 3

Attach the Driver Front Mounting Bracket (**DFM**) to M12 U-Bolt with (2) M12 Large Flat Washers, (2) M12 Lock Washers and (2) M12 Hex Nuts, (**Figs 4 & 5**). Do not fully tighten hardware at this time.



(Fig 4) Driver Front Mounting Bracket Installation



STEP 4

Move to driver side rear mounting location. Repeat **Steps 1-3** for Driver Rear Mounting Bracket (**DRM**) installation. Do not fully tighten hardware at this time.

Note: In (4) Mounting Brackets, **only the Driver Rear Mounting Bracket do not use the Stop Spacer and the M6X1-30mm Hex Bolt.**

STEP 5

Once all (2) Driver side mounting brackets are installed, then proceed to the Step Bar installation. (**Figs 6 & 7**)

(1) Select (1) Slider and (2) M8X1.25-35mm Carriage Bolts;

(2) Install (2) M8X1.25-35mm Carriage Bolts in (1) Slider.

(3) Slide the Slider (with carriage bolts) to the Step Bar.

(4) Repeat to install the other (1) slider to the step bar.

(5) Attach the Step Bar (with the Sliders) onto the installed mounting brackets. Position the Sliders to the installed brackets. Secure the Step Bar to the installed Brackets by using (4) M8 Large Flat Washers and (4) M8 Nylon Lock Nuts and (2) Sliders, (**Fig 7**). Do not fully tighten hardware at this time.

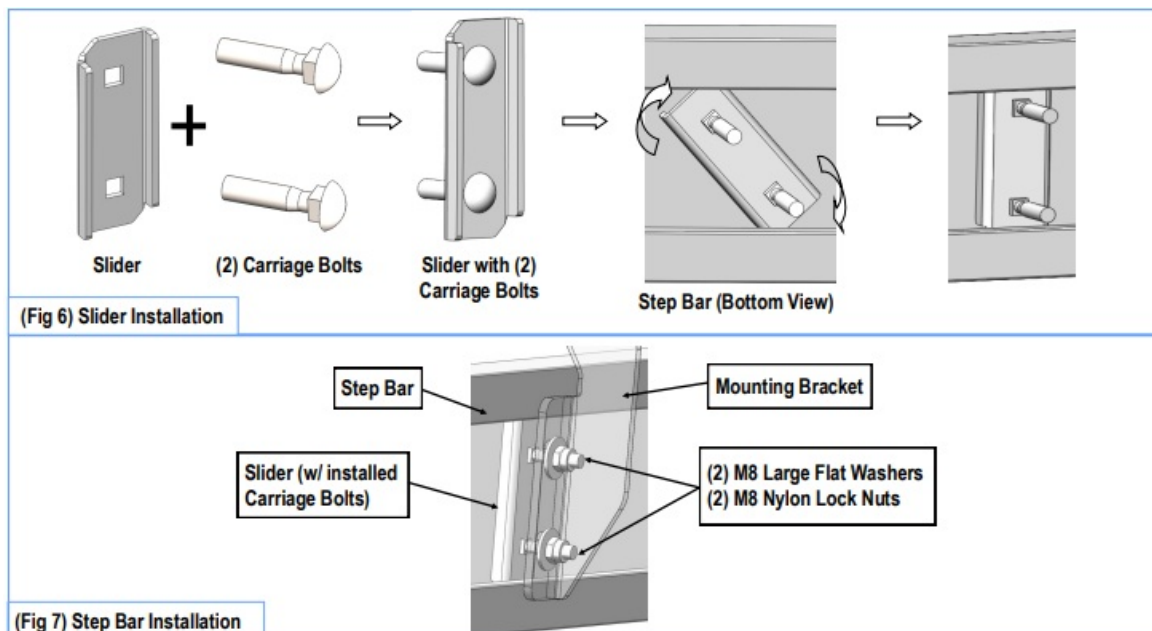
Note: The Sliders are packed with the Step Bars.

Level and adjust the Step Bar and fully tighten all hardware.

Repeat **Steps 1-5** for the other side, Step Bar installation. **The installation is completed!!!**

Attention

- Do periodic inspections to the installation to make sure that all hardware is secure and tight.
- In order to protect your bars/boards, please use mild soap/non-abrasive products for cleaning only.



Scan for
Installation Video

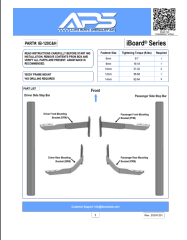
Customer Support: info@iboardauto.com

FAQS

Q: What should I do if I encounter missing parts during installation?

A: If any parts are missing, please contact our Customer Support at info@iboardauto.com for assistance.

Documents / Resources

	<p>iBoard IB-120C Electronic Smart Interactive Board [pdf] Installation Guide IB-120C, IB-120H, IB-120C Electronic Smart Interactive Board, IB-120C, Electronic Smart Interactive Board, Smart Interactive Board, Interactive Board, Board</p>
---	---

References

- [User Manual](#)

Manuals, Privacy Policy

This website is an independent publication and is neither affiliated with nor endorsed by any of the trademark owners. The "Bluetooth®" word mark and logos are registered trademarks owned by Bluetooth SIG, Inc. The "Wi-Fi®" word mark and logos are registered trademarks owned by the Wi-Fi Alliance. Any use of these marks on this website does not imply any affiliation with or endorsement.