

iBoard IB-094 Running Board Side Step Bar



# iBoard IB-094 Running Board Side Step Bar Installation Guide

[Home](#) » [iBoard](#) » iBoard IB-094 Running Board Side Step Bar Installation Guide 

## Contents

- [1 iBoard IB-094 Running Board Side Step Bar](#)
- [2 INTRODUCTION](#)
- [3 PART LIST](#)
- [4 INSTALLATION INSTRUCTION](#)
- [5 USING INSTRUCTION](#)
- [6 Documents / Resources](#)
  - [6.1 References](#)
- [7 Related Posts](#)

# iBoard

**iBoard IB-094 Running Board Side Step Bar**



**INTRODUCTION**

READ INSTRUCTIONS CAREFULLY BEFORE START ING INSTALLATION. REMOVE CONTENTS FROM THE BOX AND VERIFY ALL PARTS ARE PRESENT. ASSISTANCE IS RECOMMENDED.

- ROCKER PANEL MOUNT
- NO DRILLING REQUIRED

**PART#:** IB-094/095S/095C&H

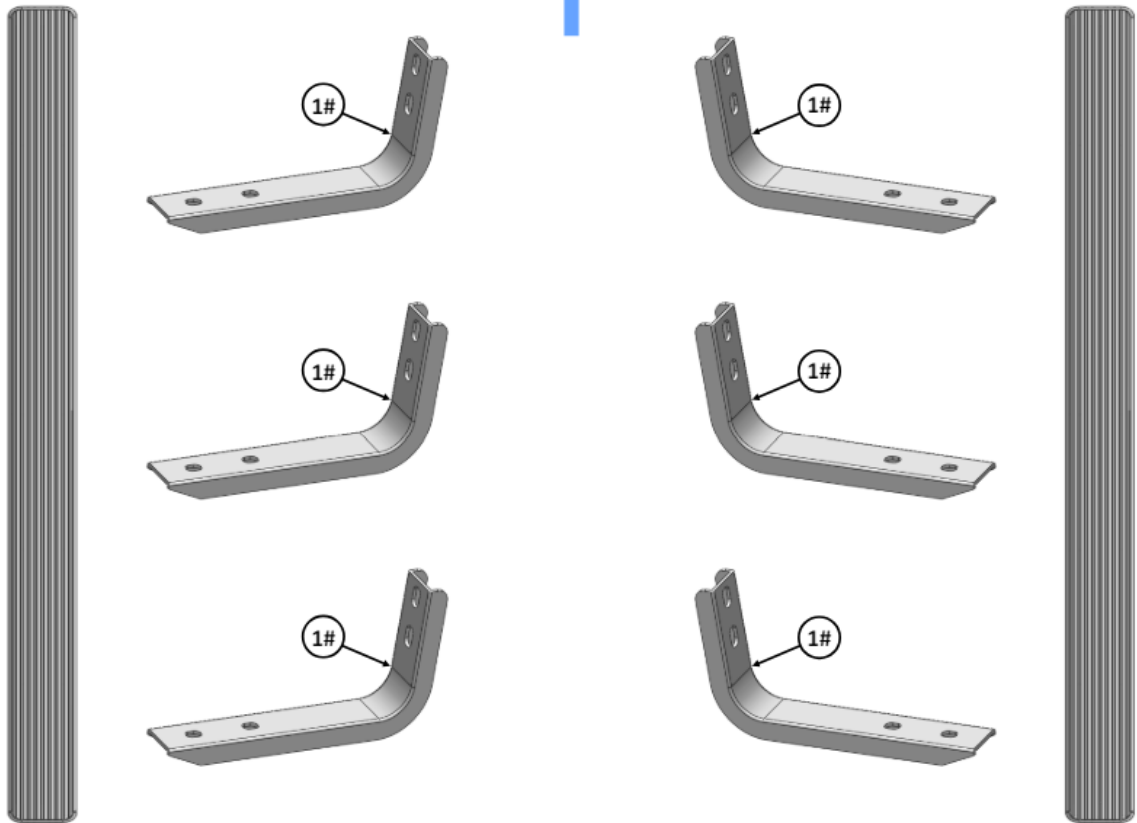
Fastener Size	Tightening Torque (ft-lbs)	Required
6mm	6-7	X
8mm	16-18	√
10mm	31-32	X
12mm	56-58	X
14mm	92-94	X

**PART LIST**

Driver Side Step Bar

Front  
↑

Passenger Side Step Bar

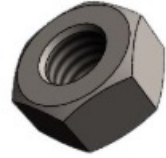
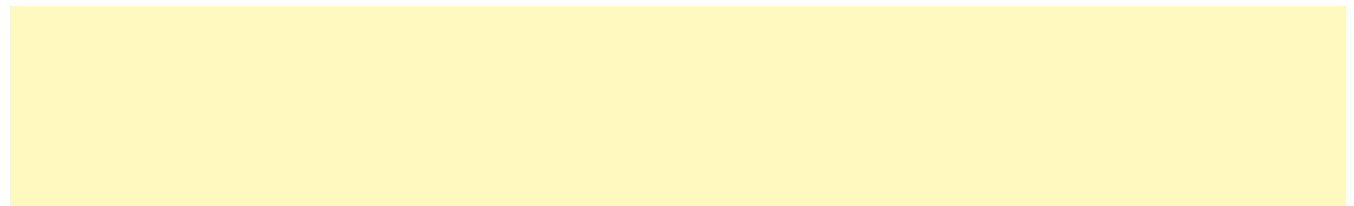


Mounting Bracket List

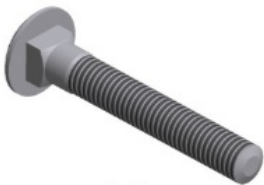
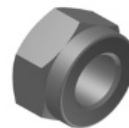
Item	QTY	Description	Item	QTY	Description
1#	6	Mounting Brackets			

**Hardware Package A (For Bracket Installation)**

Item	Qty	Description	Item	Qty	Description
1#	12	M8 Large Flat Washers	3#	12	M8 Hex Nuts
2#	12	M8 Lock Washers			

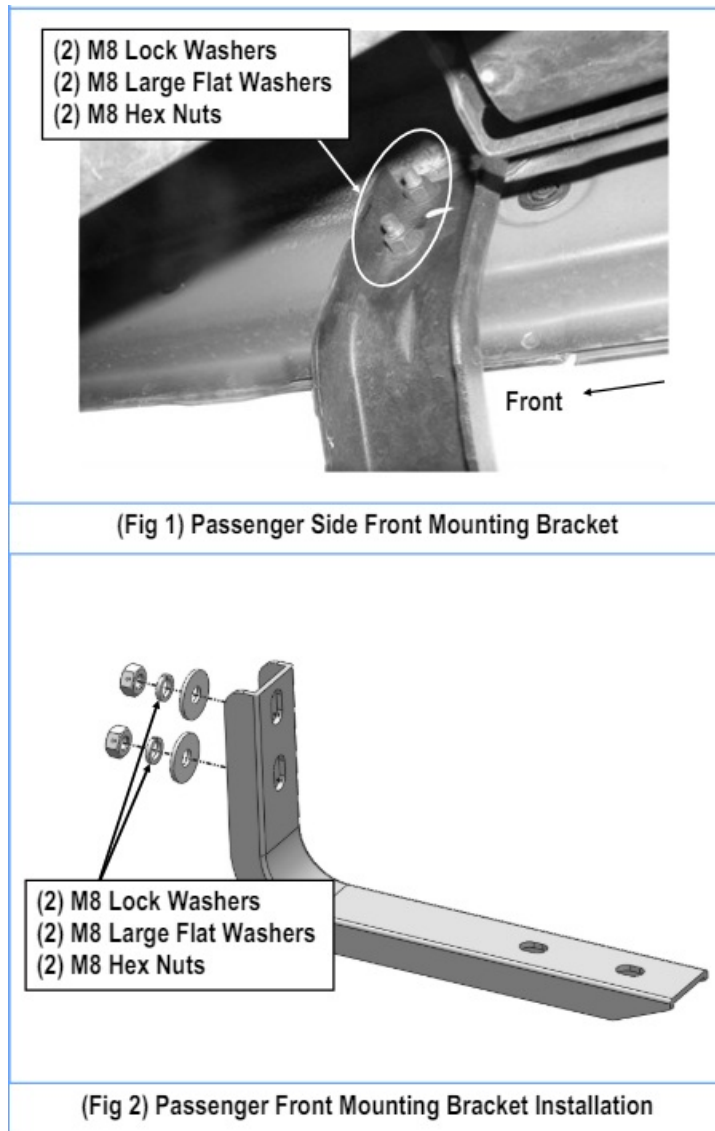
**1 #****2 #****3 #****Hardware Package B (For Stainless Steel Step Bar Installation)**

Item	Qty	Description	Item	Qty	Description
1#	12	M8X1.25-35mm Carriage Bolts	3#	12	M8 Nylon Lock Nuts
2#	12	M8 Large Flat Washers	4#	6	Sliders (Packed with Step Bars)

**1 #****2 #****3 #****4 #****INSTALLATION INSTRUCTION****STEP 1**

Start from the passenger side of the vehicle. On the passenger side, if equipped, remove the existing running board by removing the (6) nuts holding mount to the inside of the body. Install the mounting brackets with the removed stock nuts, and leave the nuts loose for now (Figs 1 & 2).

**NOTE:** Holes in brackets are offset, install with holes towards the front of the truck, passenger side shown. If not equipped with factory running boards – then use the supplied (2) M8 Hex Nuts, (2) M8 Large Flat Washers & (2) M8 Lock Washers to install mounting brackets to the truck.



## STEP 2

Repeat Step 1 to install other (2) passenger-side mounting brackets.

## STEP 3

Once all (3) Passenger side mounting brackets are installed, then proceed to the Step Bar installation. (Figs 3 & 4)

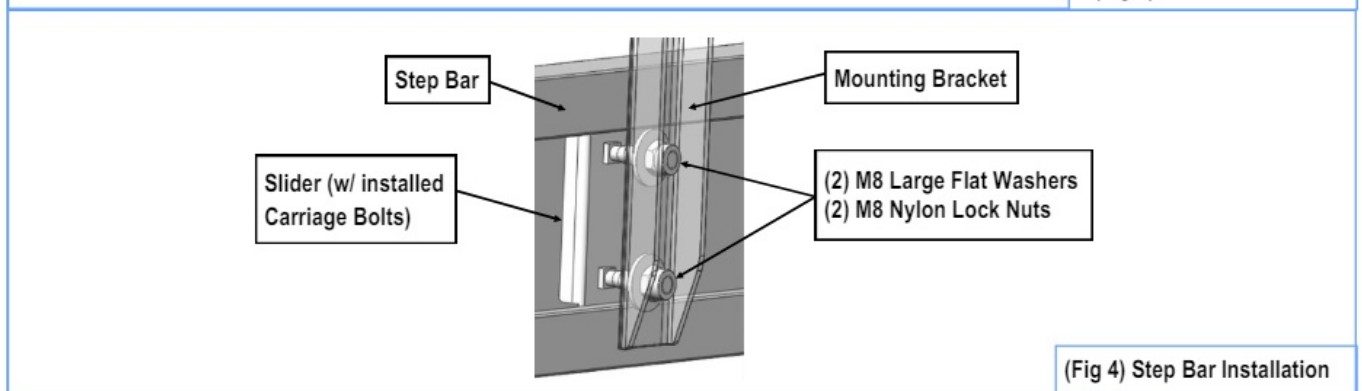
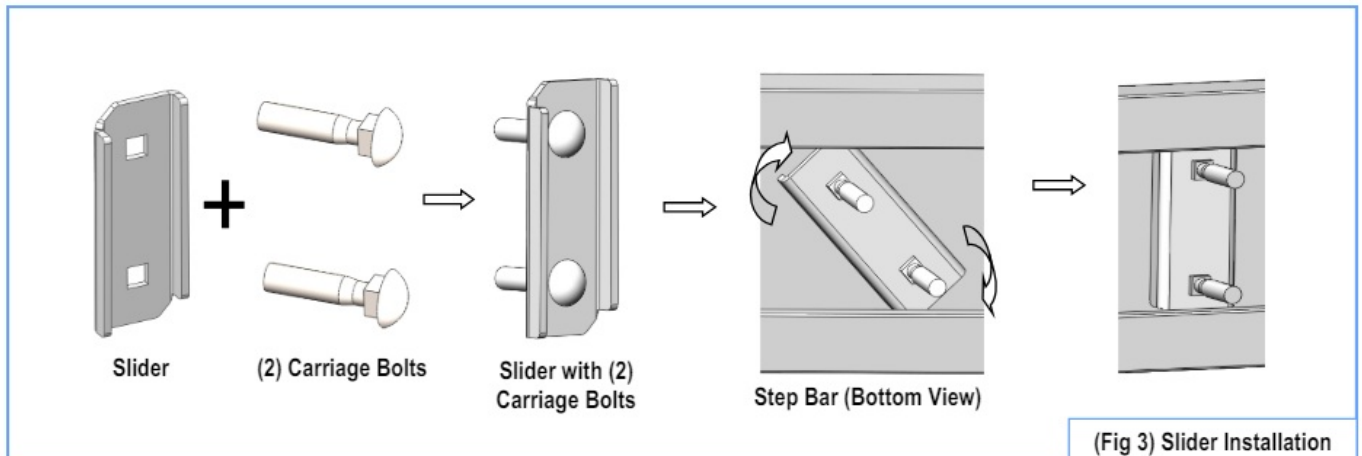
1. Select (1) Slider and (2) M8X1.25-35mm Carriage Bolts;
2. Install (2) M8X1.25-35mm Carriage Bolts in (1) Slider.
3. Slide the Slider (with carriage bolts) to the Step Bar.
4. Repeat to install the other (2) sliders to the step bar.
5. Attach the Step Bar (with the Sliders) to the installed mounting brackets. Position the Sliders to the installed brackets. Secure the Step Bar to the installed Brackets by using (6) M8 Large Flat Washers (6) M8 Nylon Lock Nuts and (3) Sliders, (Fig 4). Do not fully tighten hardware at this time.

**Note:** The Sliders are packed with the Step Bars. Level and adjust the Step Bar and fully tighten all hardware. Repeat Steps 1-3 for the other side Step Bar installation. The installation is completed!!!

## Attention

Do periodic inspections to the installation to make sure that all hardware is secure and tight. In order to protect your bars/boards, please use mild soap/non-abrasive products for cleaning only.

## USING INSTRUCTION



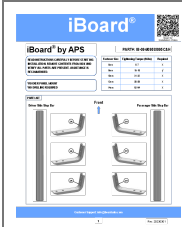
- Scan for Installation Video



Customer Support: [info@iboardauto.com](mailto:info@iboardauto.com)

---

## Documents / Resources



**[iBoard IB-094 Running Board Side Step Bar](#)** [pdf] Installation Guide  
IB-094, IB-095S, IB-095C H, IB-094 Running Board Side Step Bar, Running Board Side Step Bar, Board Side Step Bar, Side Step Bar, Step Bar, Bar

References

- [User Manual](#)

[Manuals+](#), [Privacy Policy](#)

This website is an independent publication and is neither affiliated with nor endorsed by any of the trademark owners. The "Bluetooth®" word mark and logos are registered trademarks owned by Bluetooth SIG, Inc. The "Wi-Fi®" word mark and logos are registered trademarks owned by the Wi-Fi Alliance. Any use of these marks on this website does not imply any affiliation with or endorsement.