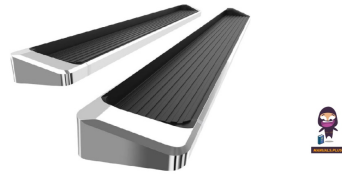


**iBoard IB-082C Running Board Side Step Bars**



# iBoard IB-082C Running Board Side Step Bars Installation Guide

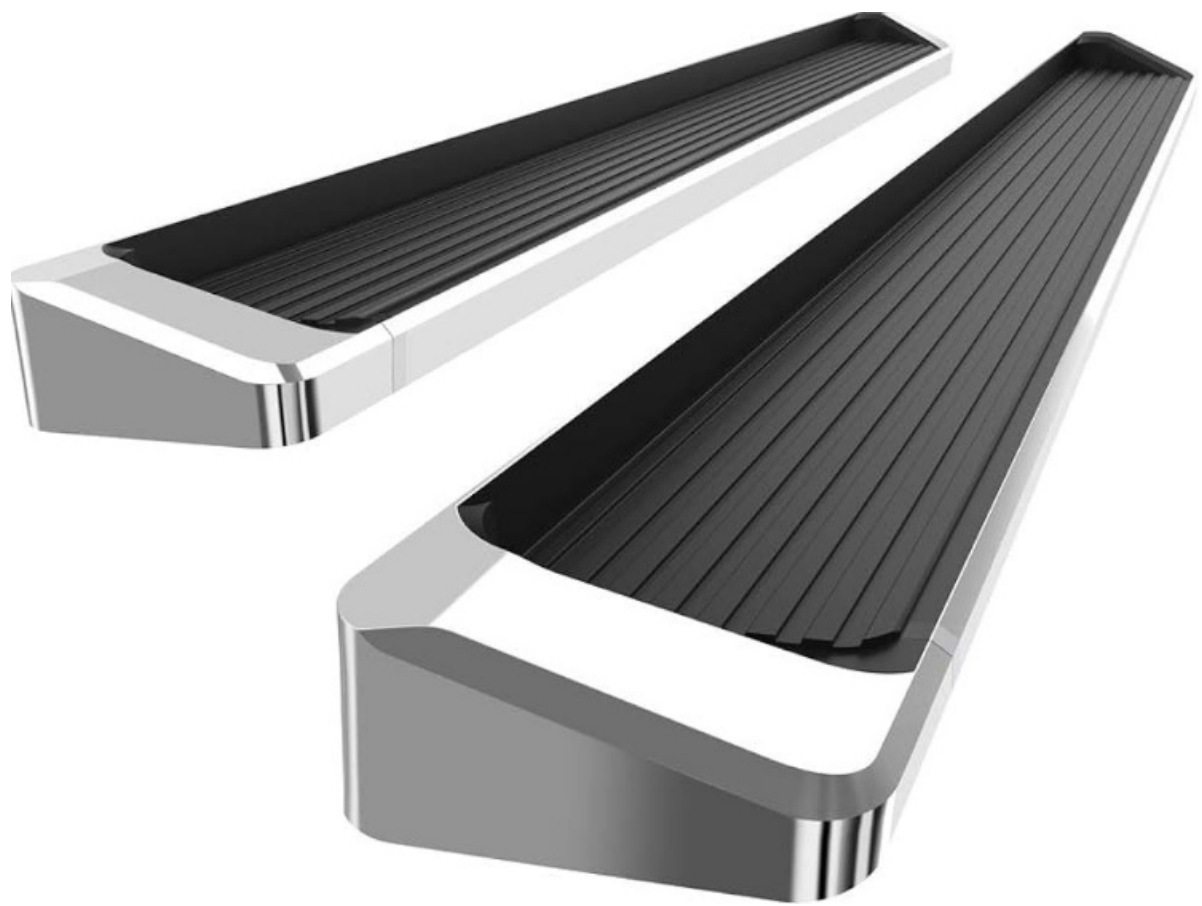
[Home](#) » [iBoard](#) » iBoard IB-082C Running Board Side Step Bars Installation Guide 

## Contents

- [1 iBoard IB-082C Running Board Side Step Bars](#)
- [2 Product Usage Instructions](#)
- [3 Frequently Asked Questions](#)
- [4 Product Information](#)
- [5 PART LIST](#)
- [6 Hardware Package](#)
- [7 Installation Instruction](#)
- [8 Documents / Resources](#)
  - [8.1 References](#)

# iBoard

**iBoard IB-082C Running Board Side Step Bars**



## Specifications

- Part Number: IB-082C&H
- Fastener Sizes: 6mm, 8mm, 10mm, 12mm, 14mm
- Tightening Torque (ft-lbs): 6-7, 16-18, 31-32, 56-58, 92-94

**Product Information** The product is a set of step bars designed for specific vehicle models. It includes various mounting brackets, hardware packages for installation, and detailed instructions for a secure and easy setup.

## Product Usage Instructions

**Step 1: Driver Side Front Installation** Start by removing the front body mount nut and washer. Use pliers or a crescent wrench to hold the bolt while loosening the nut.

**Step 2: Driver Front Mounting Bracket Installation** Loosely attach the Driver Front Mounting Bracket using the factory nut and washer. Ensure the factory rubber bushing and other components are in place.

### Step 5: Step Bar Installation

1. Select a Slider and two M8X1.25-35mm Carriage Bolts.
2. Install the Carriage Bolts in the Slider.
3. Slide the Slider with carriage bolts onto the Step Bar.
4. Repeat for the other slider and Step Bar.
5. Attach the Step Bar with Sliders to the installed mounting brackets. Secure using Large Flat Washers, Nylon Lock Nuts, and Sliders. Do not fully tighten at this time.

## Frequently Asked Questions

- **Q: Can I install the step bars alone without assistance?**

- A: While assistance is recommended, the installation can be done alone with careful following of the provided instructions.

- **Q: What tools are required for installation?**

- A: Basic tools such as pliers, wrenches, and possibly a socket set may be needed for proper installation.

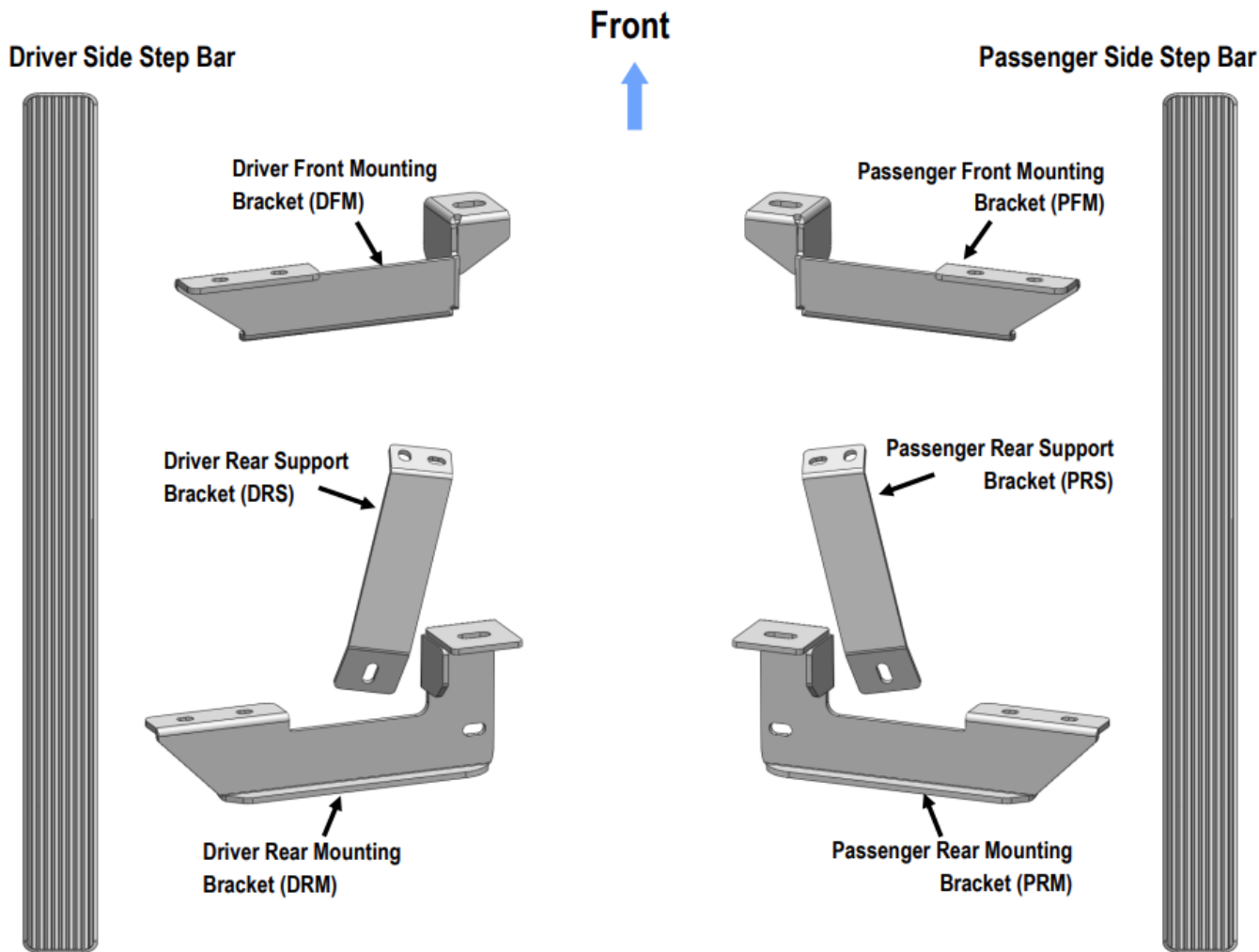
## Product Information

READ INSTRUCTIONS CAREFULLY BEFORE STARTING INSTALLATION. REMOVE CONTENTS FROM BOX AND VERIFY ALL PARTS ARE PRESENT. ASSISTANCE IS RECOMMENDED.

- BODY FRAME MOUNT
- NO DRILLING REQUIRED

Fastener Size	Tightening Torque (ft-lbs)	Required
6mm	6-7	X
8mm	16-18	√
10mm	31-32	X
12mm	56-58	X
14mm	92-94	X

## PART LIST



## Hardware Package

### Hardware Package A (For Bracket Installation)

Item	Qty	Description	Item	Qty	Description
1#	6	M8X1.25-30mm Hex Bolts	3#	6	M8 Lock Washers
2#	8	M8 Large Flat Washers	4#	2	M8 Hex Nuts



### Hardware Package B (For Stainless Steel Step Bar Installation)

Item	Qty	Description	Item	Qty	Description
1#	8	M8X1.25-35mm Carriage Bolts	3#	8	M8 Nylon Lock Nuts
2#	8	M8 Large Flat Washers	4#	4	Sliders (Packed with Step Bars)



1 #



2 #



3 #



4 #

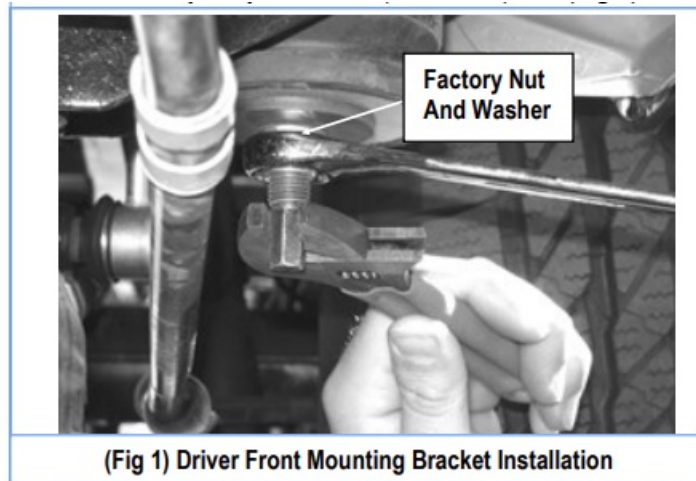
## Installation Instruction

### STEP 1

Start installation from the driver side front of the vehicle. Re-move front body mount nut and washer located underside of vehicle. NOTE: Use a pair of pliers or a crescent wrench to hold the bolt as you loosen the nut, (Fig 1).

### STEP 2

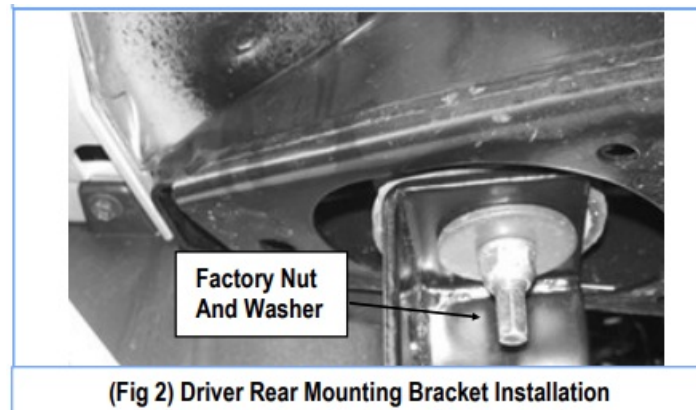
Loosely attach Driver Front Mounting Bracket (DFM) using the factory nut and washer. NOTE: Keep factory rubber bushing and other factory body mount components in place (Fig 1).



(Fig 1) Driver Front Mounting Bracket Installation

### STEP 3

Move toward the rear of the vehicle. Repeat Steps 1-2 to install the Driver Rear Mounting Bracket (DRM), (Fig 2).



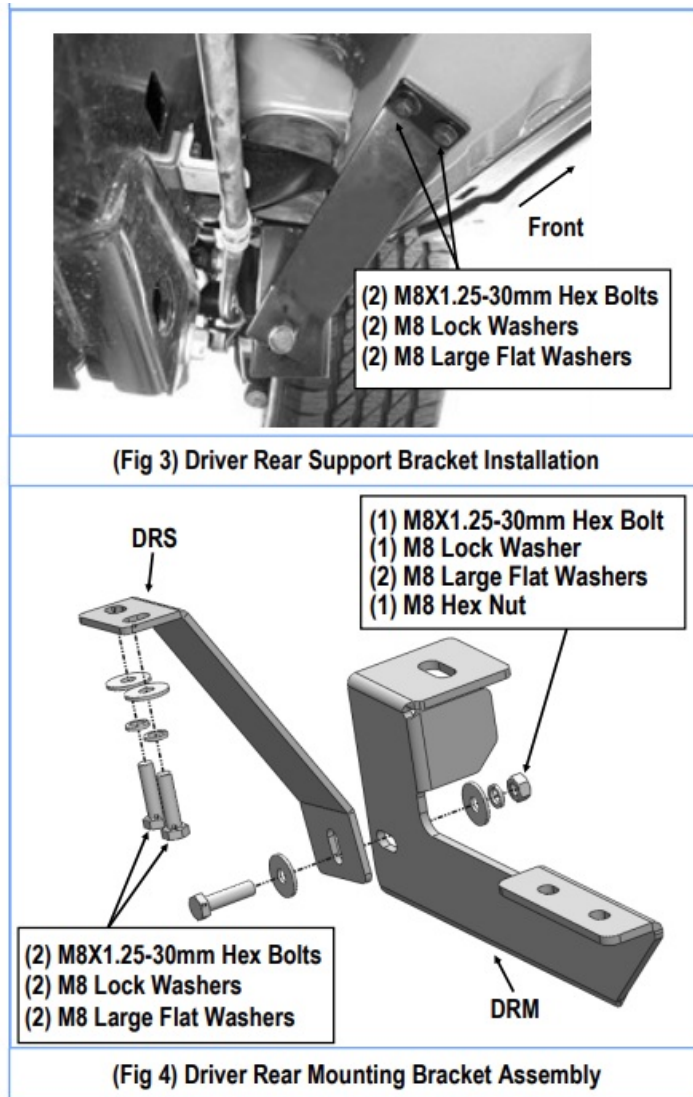
(Fig 2) Driver Rear Mounting Bracket Installation

### STEP 4

Locate the (2) factory threaded holes in the side panel by the rear body mounting location and attach the Driver Rear Support Bracket (DRS) to these factory holes using the included (2) M8X1.25-30mm Hex Bolts, (2) M8 Lock

Washers, and (2) M8 Large Flat Washers, (Fig 3).

Attach opposite side of Driver Rear Support Bracket (DRS) to Driver Rear Mounting Bracket (DRM) using the included (1) M8X1.25-30mm Hex Bolt, (1) M8 Lock Washer, (1) M8X1.25 Hex Nut, and (2) M8 Large Flat Washers, (Figs 3 & 4). Do not fully tighten at this time.

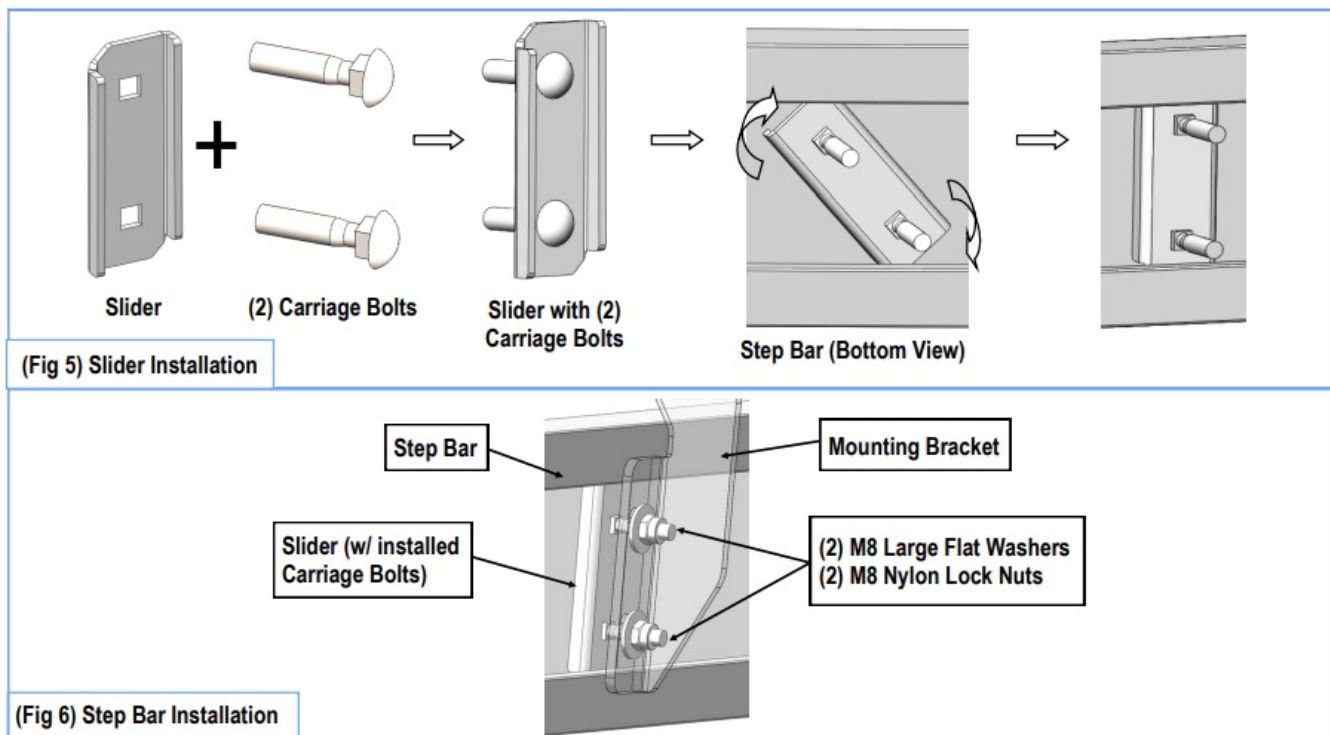


## STEP 5

Once all (2) Driver side mounting brackets are installed, then proceed to the Step Bar installation. (Figs 5 & 6)

1. Select (1) Slider and (2) M8X1.25-35mm Carriage Bolts;
2. Install (2) M8X1.25-35mm Carriage Bolts in (1) Slider.
3. Slide the Slider (with carriage bolts) to the Step Bar.
4. Repeat to install the other (1) slider to the step bar.
5. Attach the Step Bar (with the Sliders) onto the installed mounting brackets. Position the Sliders to the installed brackets. Secure the Step Bar to the installed Brackets by using (4) M8 Large Flat Washers and (4) M8 Nylon Lock Nuts and (2) Sliders, (Fig 6). Do not fully tighten hardware at this time.

Note: The Sliders are packed with the Step Bars. Level and adjust the Step Bar and fully tighten all hardware. Repeat Steps 1-5 for the other side Step Bar installation. The installation is completed!!!



## Attention

Do periodic inspections to the installation to make sure that all hardware is secure and tight. In order to protect your bars/boards, please use mild soap/non-abrasive products for cleaning only.

Customer Support: [info@iboardauto.com](mailto:info@iboardauto.com)



## Documents / Resources

	<p><b><a href="#">iBoard IB-082C Running Board Side Step Bars</a></b> [pdf] Installation Guide  IB-082C, IB-082H, IB-082C Running Board Side Step Bars, IB-082C, Running Board Side Step Bars, Board Side Step Bars, Side Step Bars, Step Bars</p>
--	--

## References

- [User Manual](#)

[Manuals+](#), [Privacy Policy](#)

This website is an independent publication and is neither affiliated with nor endorsed by any of the trademark owners. The "Bluetooth®" word mark and logos are registered trademarks owned by Bluetooth SIG, Inc. The "Wi-Fi®" word mark and logos are registered trademarks owned by the Wi-Fi Alliance. Any use of these marks on this website does not imply any affiliation with or endorsement.