

iBoard IB-044C&H Running Boards Nerf Bars Side Steps



# iBoard IB-044C&H Running Boards Nerf Bars Side Steps Instruction Manual

[Home](#) » [iBoard](#) » iBoard IB-044C&H Running Boards Nerf Bars Side Steps Instruction Manual 

## Contents

- [1 iBoard IB-044C&H Running Boards Nerf Bars Side Steps](#)
- [2 Product Information](#)
- [3 Product Usage Instructions](#)
- [4 Documents / Resources](#)
  - [4.1 References](#)
- [5 Related Posts](#)



**iBoard IB-044C&H Running Boards Nerf Bars Side Steps**



## Product Information

### Specifications

- Part Number: IB-044C&H
- Rocker Panel Mount
- No drilling required

### Product Usage Instructions

#### 1. Step 1: Driver Side Mounting Locations

Starting on the driver side of the vehicle, locate the (2) holes in the bottom of the body panel (pinch weld). Next, locate the rectangular opening and (2) small holes in the inner body panel directly above the holes in the pinch weld. Installation will use only the forward holes in each mounting location. Remove any sealing tape or insulation covering the holes in the inner panel.

#### 2. Step 2: Driver Front Mounting Bracket Installation

Slide (1) M8 Clip Nut into the rectangular opening with the nut towards the inside. Line up the threaded nut on the clip with the round hole toward the front of the vehicle. Repeat to install an M8 Clip Nut in the forward hole in the pinch weld. Ensure correct factory mounting holes location by holding a mounting Bracket up in position.

#### 3. Step 3: Driver Front Mounting Bracket Assembly

Select the Driver Front Mounting Bracket. Attach the Bracket to the M8 Clip Nut and lower hole using the provided hardware. Ensure that the cradle on the front Bracket faces to the rear of the vehicle. Do not fully tighten hardware at this time.

#### 4. Step 4: Driver Center and Rear Mounting Brackets Installation

Move to the center and rear of the vehicle. Locate the (2) holes in the pinch weld similar to the front location and repeat Steps 1-3 to install the Driver Center Mounting Bracket and Driver Rear Mounting Bracket.

#### 5. Step 5: Step Bar Installation

Once all (3) Driver side mounting brackets are installed, proceed with the Step Bar installation.

#### FAQs

**Q: Is drilling required for installing this product?**

A: No, drilling is not required for this product as it is designed for rocker panel mount.

**Q: What is the recommended tightening torque for different fastener sizes?**

A: The recommended tightening torque is as follows:

- 6mm – 6-7 ft-lbs
- 8mm – 16-18 ft-lbs
- 10mm – 31-32 ft-lbs
- 12mm – 56-58 ft-lbs
- 14mm – 92-94 ft-lbs

#### iBoard® by APS

READ INSTRUCTIONS CAREFULLY BEFORE START ING INSTALLATION. REMOVE CONTENTS FROM BOX AND VERIFY ALL PARTS ARE PRESENT. ASSISTANCE IS RECOMMENDED.

- ROCKER PANEL MOUNT
- NO DRILLING REQUIRED

#### PART#: IB-044C&H

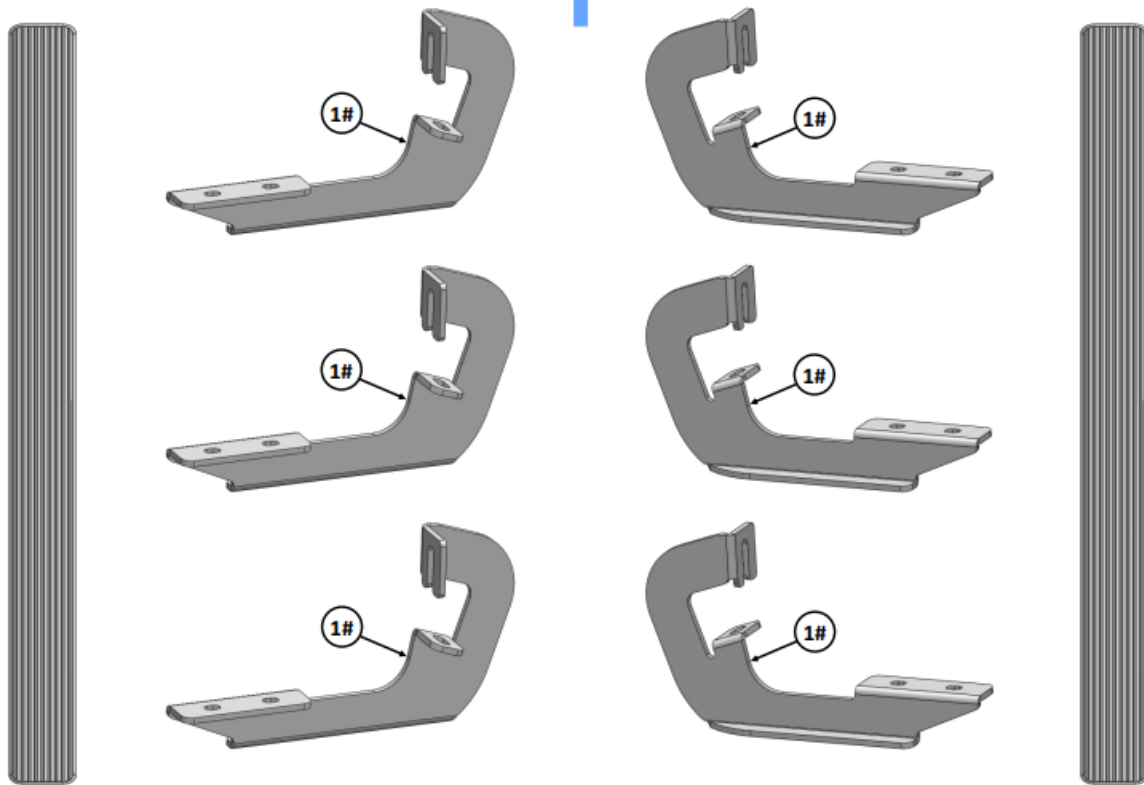
Fastener Size	Tightening Torque (ft-lbs)	Required
6mm	6-7	X
8mm	16-18	√
10mm	31-32	X
12mm	56-58	X
14mm	92-94	X

# PART LIST

Driver Side Step Bar

Front

Passenger Side Step Bar



## Mounting Bracket List

Item	Qty	Description	Item	Qty	Description
1#	6	Mounting Brackets			

## Hardware Package A (For Bracket Installation)

Item	Qty	Description	Item	Qty	Description
1#	12	M8X1.25-30mm Hex Bolts	4#	6	M8X1.25 Hex Nuts
2#	18	M8 Large Flat Washers	5#	6	M8 Clip Nuts
3#	12	M8 Lock Washers			



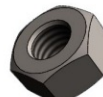
1 #



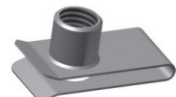
2 #



3 #




4 #




5 #


Hardware Package B (For Stainless Steel Step Bar Installation)					
Item	Qty	Description	Item	Qty	Description
1#	12	M8X1.25-35mm Carriage Bolts	3#	12	M8 Nylon Lock Nuts
2#	12	M8 Large Flat Washers	4#	6	Sliders (Packed with Step Bars)




1 #



2 #



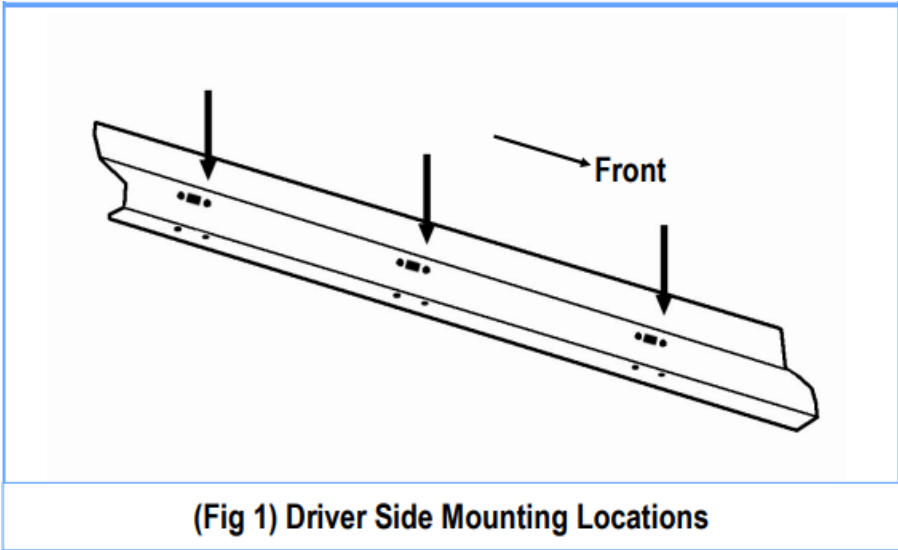
3 #



4 #

### 1. STEP 1

Starting on the driver side of the vehicle, locate the (2) holes in the bottom of the body panel, (pinch weld). Next locate the rec-tangular opening and (2) small holes in the inner body panel directly above the holes in the pinch weld, (Fig 1). Installation will use only the forward holes in each mounting location. NOTE: The holes in the inner panel may be covered with seal-ing tape or insulation, remove as required.



### 2. STEP 2

Slide (1) M8 Clip Nut into the rectangular opening with the nut towards the inside. Line up the threaded nut on the clip with the round hole toward the front of the vehicle, (Fig 2). Repeat to install an M8 Clip Nut in forward hole in the pinch weld. NOTE: If necessary, hold a mounting Bracket up in position to deter-mine correct factory

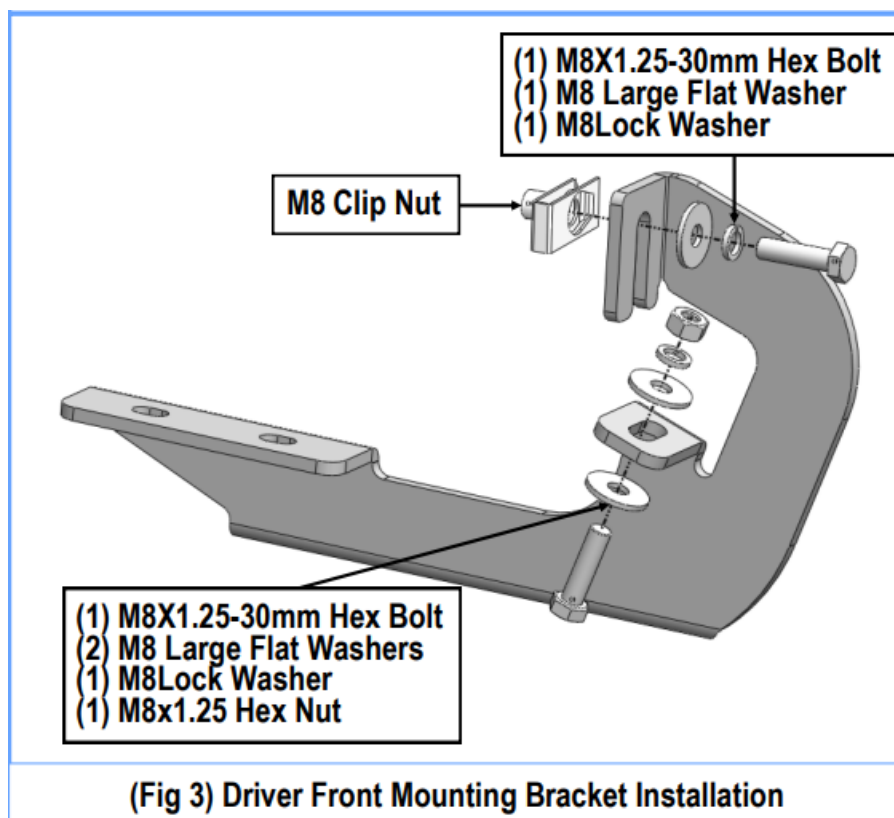
mounting holes location.

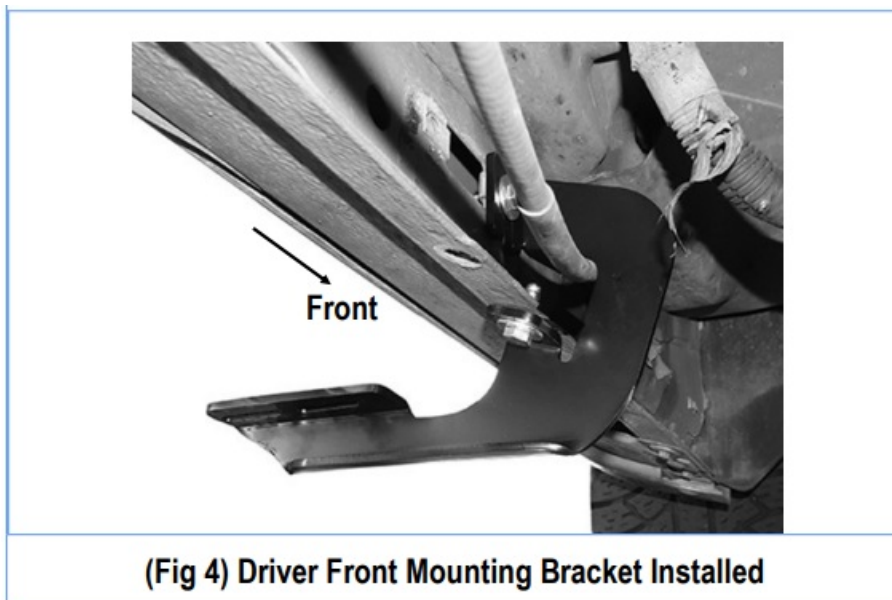


### 3. STEP 3

Select the Driver Front Mounting Bracket. Attach the Bracket to the (1) M8 Clip Nut with the included (1) M8X1.25-30mm Hex Bolt, (1) M8 Lock Washer and (1) M8 Flat Washer, and to the lower hole use (1) M8X1.25-30mm Hex Bolt, (1) M8 Lock Washer, (2) M8 Large Flat Washers and (1) M8X1.25 Hex Nut (Fig 3). Depending on model and year, the brake cable may be run on the inside or outside of the Bracket. Do not fully tighten hardware at this time.

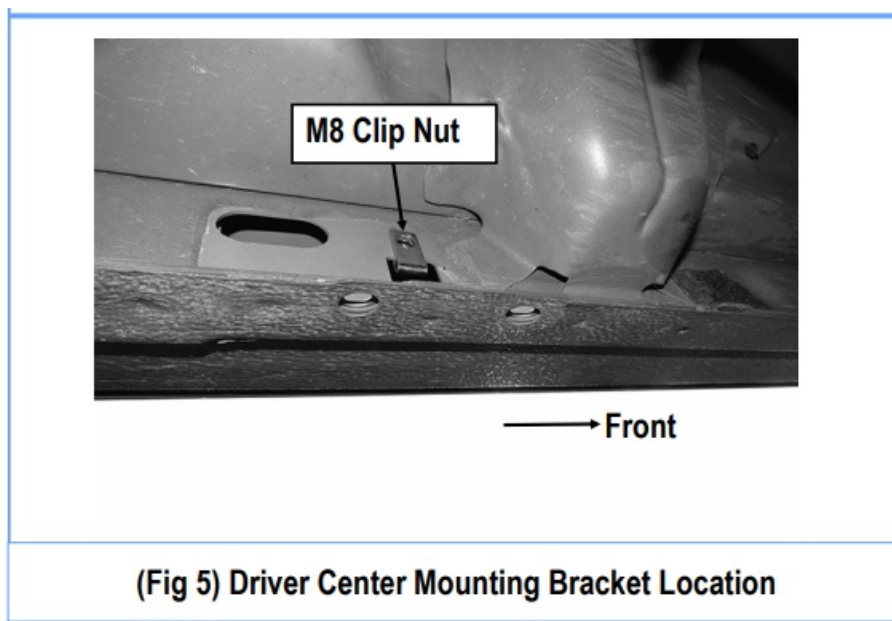
**NOTE:** The cradle on the front Bracket should face to the rear of the vehicle.





#### 4. STEP 4

Next, move to the center & rear of the vehicle. Locate the (2) holes in the pinch weld similar to the front location, (Fig 5-6). Repeat Steps 1-3 to install the Driver Center Mounting Bracket & Driver Rear Mounting Bracket .



#### 5. STEP 5

Once all (3) Driver side mounting brackets are installed, then proceed to the Step Bar installation. (Figs 7 & 8)

1. Select (1) Slider and (2) M8X1.25-35mm Carriage Bolts;
2. Install (2) M8X1.25-35mm Carriage Bolts in (1) Slider.
3. Slide the Slider (with carriage bolts) to the Step Bar.
4. Repeat to install the other (2) slider to the step bar.
5. Attach the Step Bar (with the Sliders) onto the installed mounting brackets. Position the Sliders to the installed brackets. Secure the Step Bar to the installed Brackets by using (6) M8 Large Flat Washers and (6) M8 Nylon Lock Nuts and (3) Sliders, (Fig 8). Do not fully tighten hardware at this time.

**Note:** The Sliders are packed with the Step Bars.

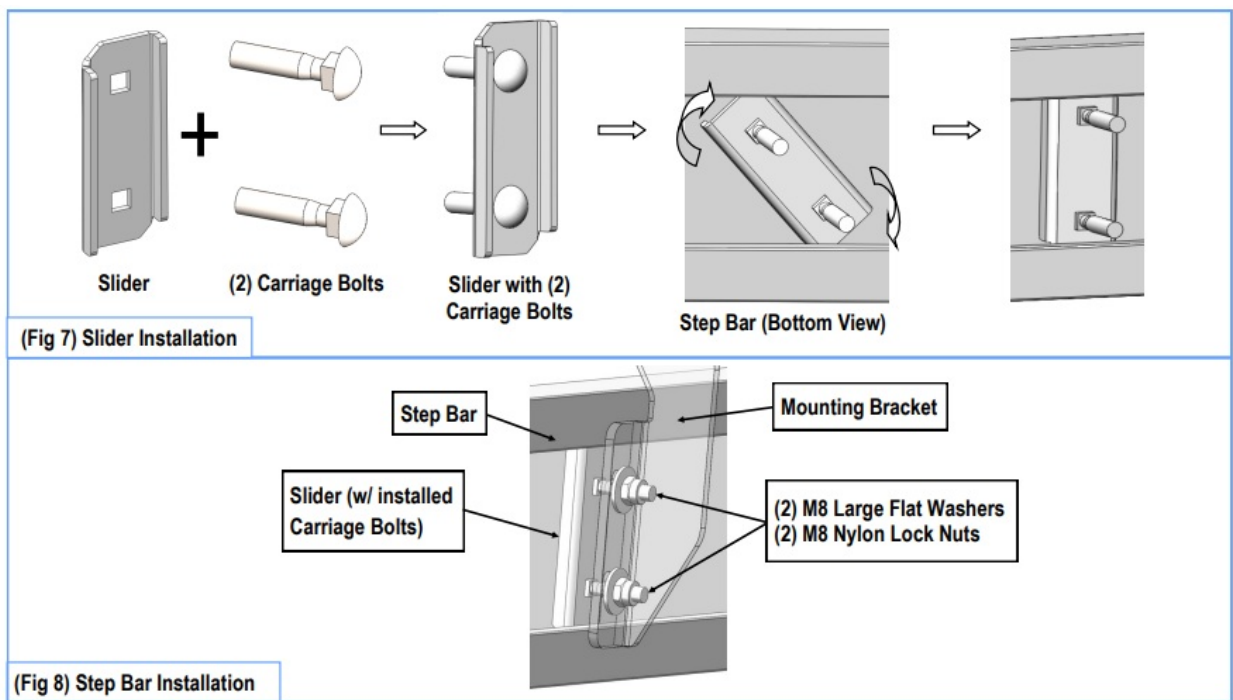
Level and adjust the Step Bar and fully tighten all hardware.

Repeat Steps 1-5 for the other side Step Bar installation. The installation is completed!!!

#### **Attention**

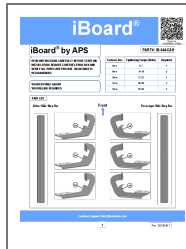
Do periodic inspections to the installation to make sure that all hardware is secure and tight.

In order to protect your bars/boards, please use mild soap/non-abrasive products for cleaning only.



Customer Support: [info@iboardauto.com](mailto:info@iboardauto.com)  
 Rev. 20230401

## Documents / Resources



**[iBoard IB-044C&H Running Boards Nerf Bars Side Steps](#)** [pdf] Instruction Manual  
 IB-044C H Running Boards Nerf Bars Side Steps, IB-044C H, Running Boards Nerf Bars Side Steps, Boards Nerf Bars Side Steps, Nerf Bars Side Steps, Bars Side Steps, Side Steps, Steps

## References

- [User Manual](#)

[Manuals+](#), [Privacy Policy](#)

This website is an independent publication and is neither affiliated with nor endorsed by any of the trademark owners. The "Bluetooth®" word mark and logos are registered trademarks owned by Bluetooth SIG, Inc. The "Wi-Fi®" word mark and logos are registered trademarks owned by the Wi-Fi Alliance. Any use of these marks on this website does not imply any affiliation with or endorsement.