



iBoard IB-028CH Running Boards Nerf Bars Side Steps Step Bars Installation Guide

[Home](#) » [iBoard](#) » iBoard IB-028CH Running Boards Nerf Bars Side Steps Step Bars Installation Guide 

Contents

- [1 iBoard IB-028CH Running Boards Nerf Bars Side Steps Step Bars](#)
- [2 Documents / Resources](#)
 - [2.1 References](#)
- [3 Related Posts](#)

iBoard®

iBoard IB-028CH Running Boards Nerf Bars Side Steps Step Bars



Specifications

- Product Name: Driver Side Step Bar
- Part Number: IB-028C&H
- Fastener Size: 6mm, 8mm, 10mm, 12mm, 14mm
- Tightening Torque (ft-lbs): 6-7, 16-18, 31-32, 56-58, 92-94

Product Usage Instructions

1. Step 1: Locating Front Factory Holes

Start installation from the driver side front of the vehicle. Locate the (2) front factory holes on the driver side floor panel located by the front tire. Insert (1) M10 Clip Nut through the larger hole with the threaded nut facing up.

2. Step 2: Attaching Driver Front Mounting Bracket

Attach the Driver Front Mounting Bracket to the pinch weld using (2) M10X1.5-30mm Hex Bolts, (4) M10 Flat Washers, (2) M10 Lock Washers, and (2) M10 Hex Nuts. Do not fully tighten hardware at this time.

3. Step 3: Installing Tube Spacer and Bolts

Place a short 65mm Tube Spacer between the tab on the Driver Front Mounting Bracket and the installed M10 Clip Nut. Attach the bracket to the Clip Nut with (1) M10X1.5-100mm Hex Bolt, (1) M10 Flat Washer, and (1) M10 Lock Washers.

4. Step 4: Installing Rear Mounting Brackets

Use an 85mm Tube Spacer with an M10X1.5-120mm Hex Bolt on the Driver Center and Rear Mounting Brackets. Repeat the installation process for the rear mounting brackets on the driver side.

5. Step 5: Finalizing Installation

Install the rear Mounting Brackets depending on your vehicle model. Ensure all bolts and nuts are securely tightened to the specified torque values.

FAQ:

Q: Is drilling required for mounting these step bars?

A: No, these step bars are designed for rocker panel mount without the need for drilling.

iBoard® by APS

READ INSTRUCTIONS CAREFULLY BEFORE START ING INSTALLATION. REMOVE CONTENTS FROM BOX AND VERIFY ALL PARTS ARE PRESENT. ASSISTANCE IS RECOMMENDED.

- ROCKER PANEL MOUNT
- NO DRILLING REQUIRED

PART#: IB-028C&H

Fastener Size	Tightening Torque (ft-lbs)	Required
6mm	6-7	X
8mm	16-18	√
10mm	31-32	√
12mm	56-58	X
14mm	92-94	X

PART LIST

Driver Side Step Bar

Front

Passenger Side Step Bar



Driver Front Mounting Bracket (DFM)



Driver Center/Rear Mounting Bracket (DCM/DRM)



Passenger Front Mounting Bracket (PFM)



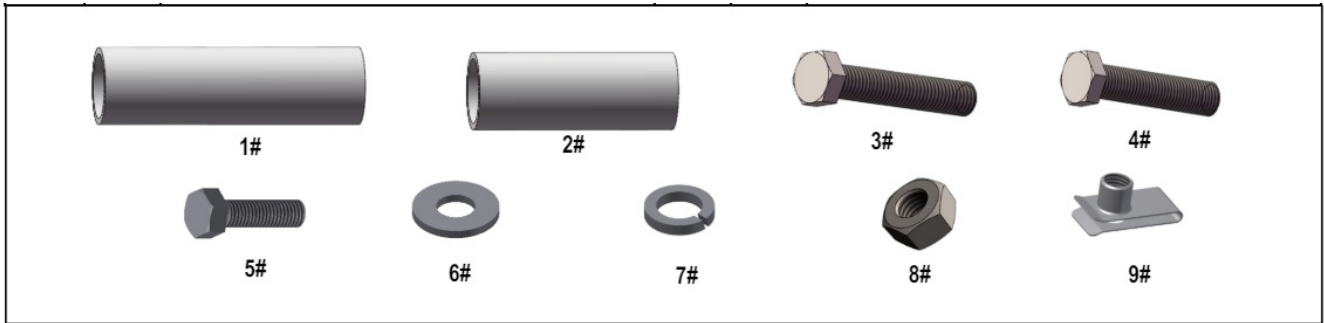
Passenger Center/Rear Mounting Bracket (PCM/PRM)



Note: *Driver Center / Rear Mounting Bracket are universal
*Passenger Center / Rear Mounting Bracket are universal

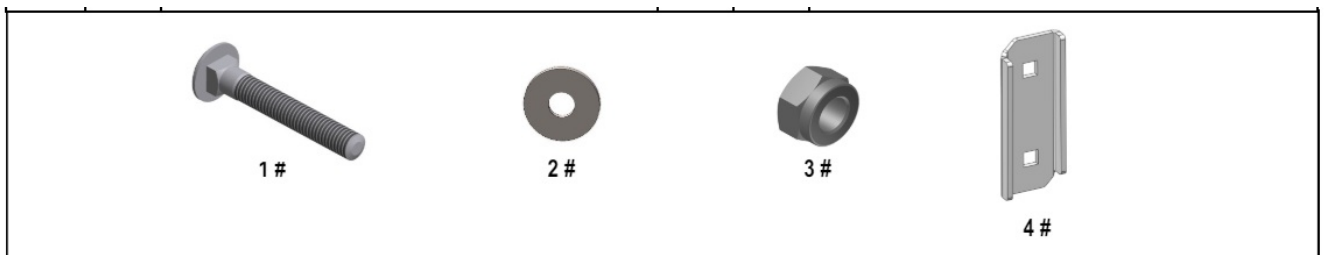
Hardware Package A (For Bracket Installation)

Item	QTY	Description	Item	QTY	Description
1#	4	85mm Tube Spacers	6#	30	M10 Flat Washers
2#	2	65mm Tube Spacers	7#	18	M10 Lock Washers
3#	4	M10X1.5-120mm Hex Bolts	8#	12	M10 Hex Nuts
4#	2	M10X1.5-100mm Hex Bolts	9#	6	M10 Clip Nuts
5#	12	M10X1.5-30mm Hex Bolts			



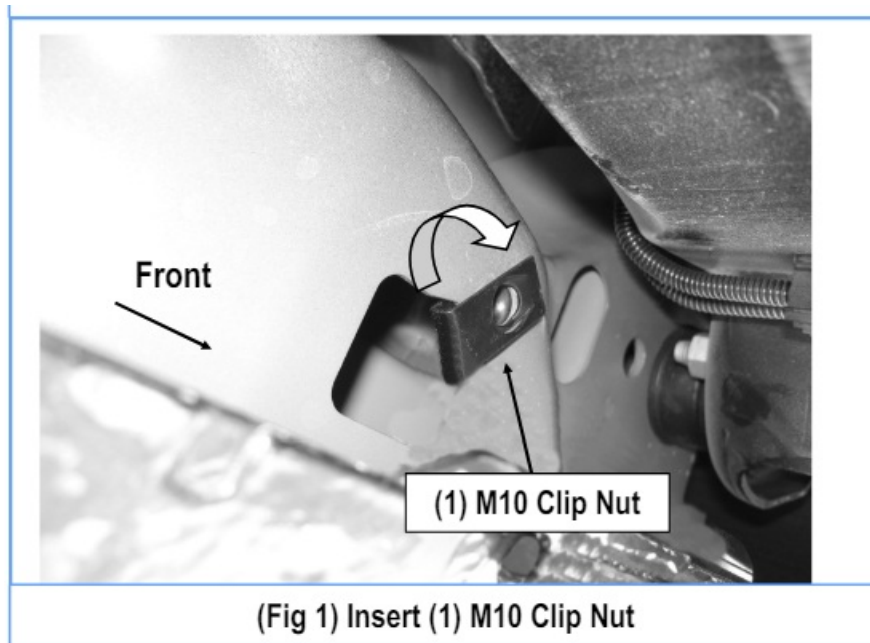
Hardware Package B (For Stainless Steel Step Bar Installation)

Item	QTY	Description	Item	QTY	Description
1#	12	M8X1.25-35mm Carriage Bolts	3#	12	M8 Nylon Lock Nuts
2#	12	M8 Large Flat Washers	4#	6	Sliders (Packed with Step Bars)



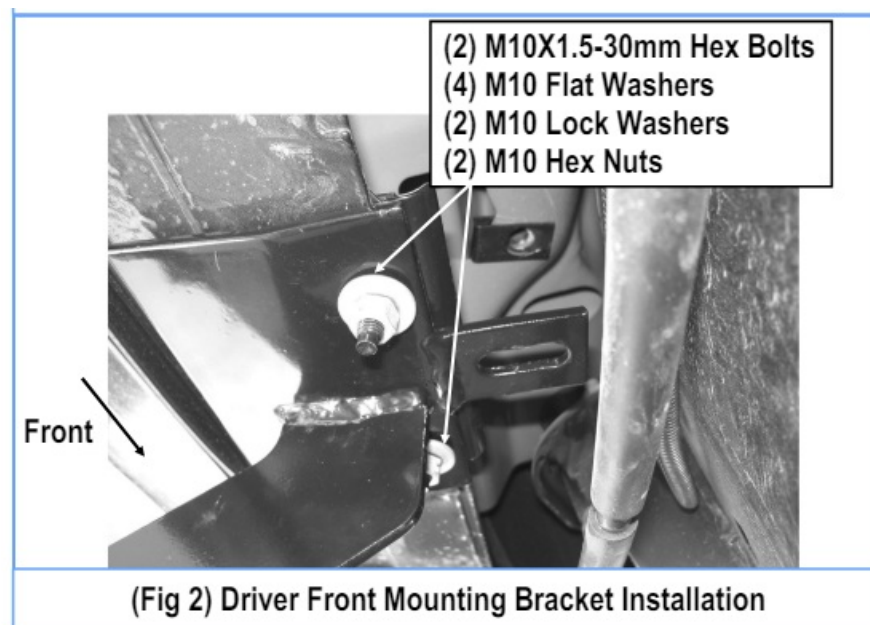
1. STEP 1

Start installation from the driver side front of the vehicle. From underside of vehicle, locate the (2) front factory holes on the driver side floor panel located by the front tire. With the thread-ed nut facing up, insert (1) M10 Clip Nut through larger hole. Orient M10 Clip Nut to engage in the smaller hole, (Fig 1).



2. STEP 2

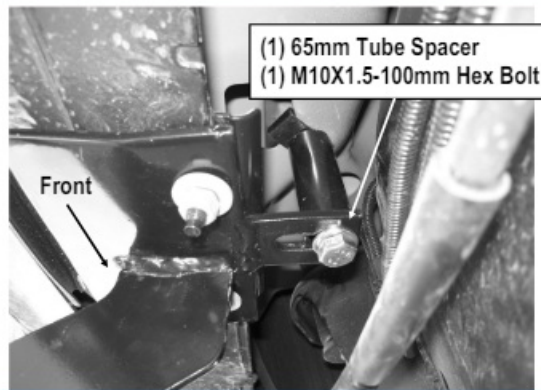
Select the Driver Front Mounting Bracket (DFM). Attach the Front Mounting Bracket to pinch weld with (2) M10X1.5-30mm Hex Bolts, (4) M10 Flat Washers, (2) M10 Lock Washers and (2) M10 Hex Nuts, (Figs 2 & 4). Do not fully tighten hardware at this time.



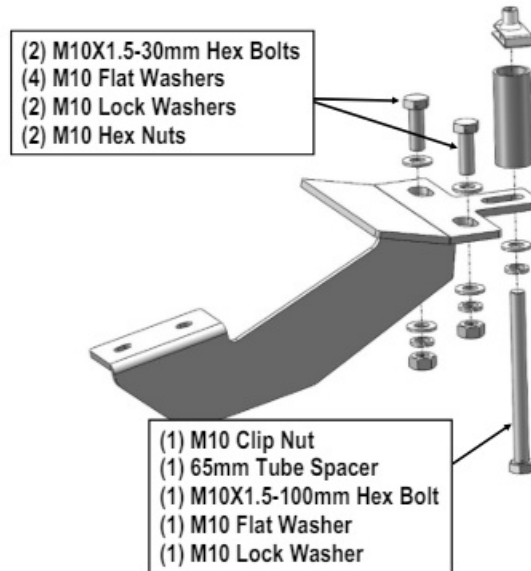
3. STEP 3

Place (1) short 65mm Tube Spacer between the tab on the Driver Front Mounting Bracket and the installed M10 Clip Nut.

Attach the Driver Front Mounting Bracket to the installed Clip Nut with (1) M10X1.5-100mm Hex Bolt, (1) M10 Flat Washer and (1) M10 Lock Washers, (Figs 3 & 4). Do not fully tighten at this time.



(Fig 3) Driver Front Mounting Bracket Installation



(Fig 4) Driver Front Mounting Bracket Installation

4. STEP 4

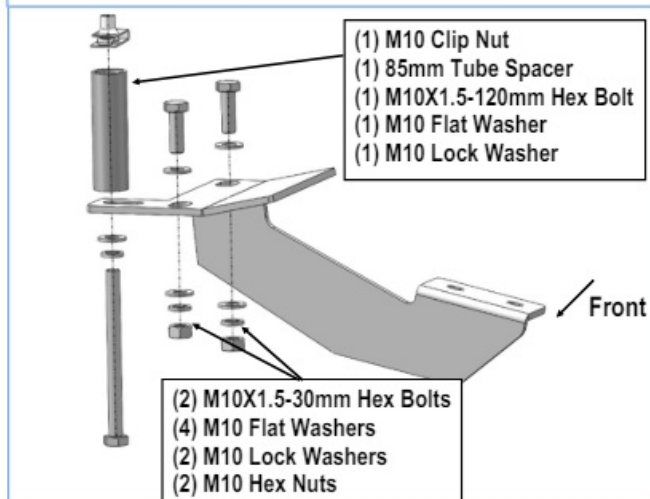
Move to the driver side center mounting location. Repeat Steps 2 – 3 for Driver Center Mounting Bracket.

Depending upon your vehicle, the center factory hole might be too small for the M10 Clip Nut, file the Clip Nut until you are able to mount it, (Fig 5).

NOTE: You will be using (1) 85mm Tube Spacer with (1) M10X1.5 -120mm Hex Bolt on the Driver Center and Rear Mounting Brackets, (Fig 6). Do not fully tighten at this time.



(Fig 5) The Clip Nut Installation



(Fig 6) Driver Center Mounting Bracket (DCM) Installation

5. STEP 5

- Move to the driver side rear mounting location. Repeat Step 4 for Driver Rear Mounting Brackets.
- **IMPORTANT!** Install the rear Mounting Brackets depending upon your vehicle. 07-08 Explorer Sport Trac:
- You will need to swap the Rear Mounting Brackets. The Passenger Rear Mounting Bracket will mount on the driver side rear location, and the Driver Rear Mounting Bracket will mount on the passenger side rear location.

6. STEP 6

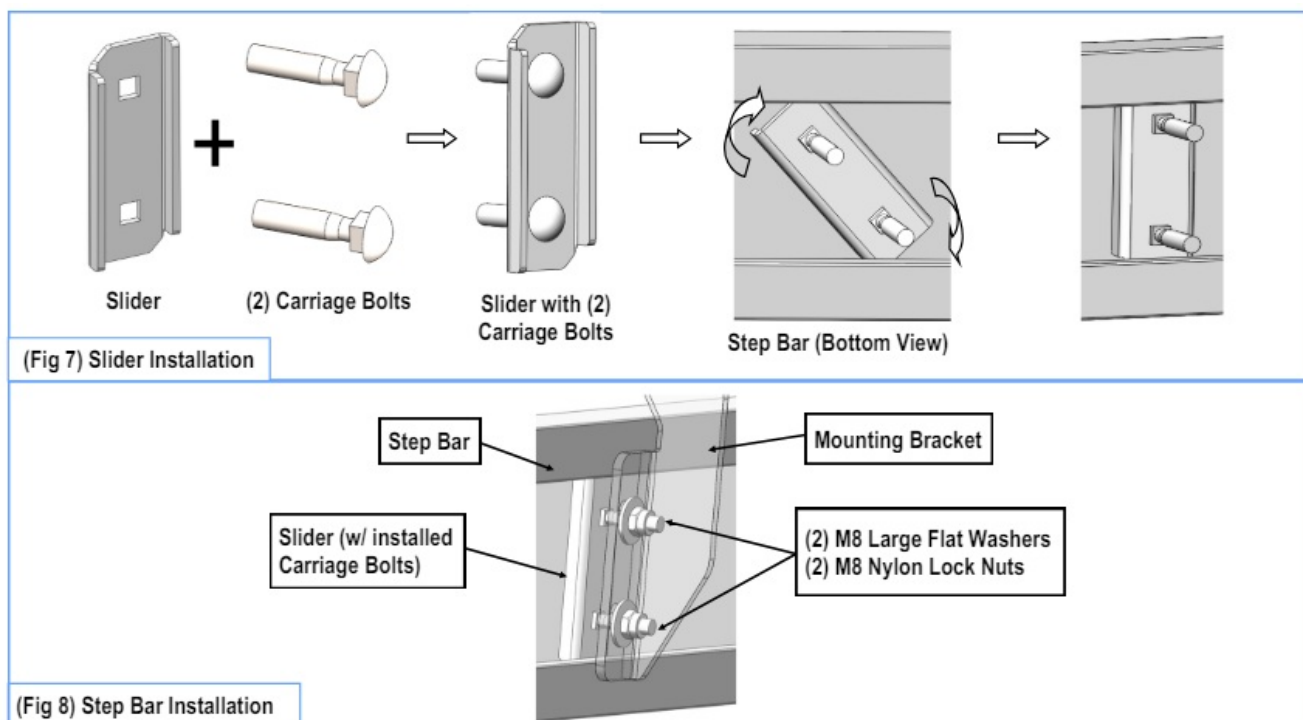
Once all (3) Driver side mounting brackets are installed, then proceed to the Step Bar installation. (Figs 7 & 8)

1. Select (1) Slider and (2) M8X1.25-35mm Carriage Bolts;
2. Install (2) M8X1.25-35mm Carriage Bolts in (1) Slider.
3. Slide the Slider (with carriage bolts) to the Step Bar.
4. Repeat to install the other (2) sliders to the step bar.
5. Attach the Step Bar (with the Sliders) onto the installed mounting brackets. Position the Sliders to the installed brackets. Secure the Step Bar to the installed Brackets by using (6) M8 Large Flat Washers and (6) M8 Nylon Lock Nuts and (3) Sliders, (Fig 8). Do not fully tighten hardware at this time.

Note: The Sliders are packed with the Step Bars.

Level and adjust the Step Bar and fully tighten all hardware.

Repeat Steps 1-6 for the other side Step Bar installation. The installation is completed!!!



Attention

Do periodic inspections to the installation to make sure that all hardware is secure and tight.
 In order to protect your bars/boards, please use mild soap/non-abrasive products for cleaning only.

Customer Support: info@iboardauto.com

Documents / Resources

	<p>iBoard IB-028CH Running Boards Nerf Bars Side Steps Step Bars [pdf] Installation Guide IB-028CH Running Boards Nerf Bars Side Steps Step Bars, IB-028CH, Running Boards Nerf Bars Side Steps Step Bars, Bars Side Steps Step Bars, Steps Step Bars</p>
--	---

References

- [User Manual](#)

[Manuals+](#), [Privacy Policy](#)

This website is an independent publication and is neither affiliated with nor endorsed by any of the trademark owners. The "Bluetooth®" word mark and logos are registered trademarks owned by Bluetooth SIG, Inc. The "Wi-Fi®" word mark and logos are registered trademarks owned by the Wi-Fi Alliance. Any use of these marks on this website does not imply any affiliation with or endorsement.