

iBoard IB-022C&H Running Boards Nerf Bars Side Steps Step Bars Installation Guide

Contents

- 1 iBoard®
 - 1.1 iBoard® by APS
 - 1.1.1 PART#: IB-022C&H
 - 1.1.1.1 PART LIST
 - 1.1.2 STEP 1
 - 1.1.3 STEP 2
 - 1.1.4 STEP 3
 - 1.1.5 STEP 4
- 2 Documents / Resources
 - 2.1 References

iBoard®



Scan for Installation Video

iBoard® by APS

READ INSTRUCTIONS CAREFULLY BEFORE START ING INSTALLATION. REMOVE CONTENTS FROM BOX AND VERIFY ALL PARTS ARE PRESENT. ASSISTANCE IS RECOMMENDED.

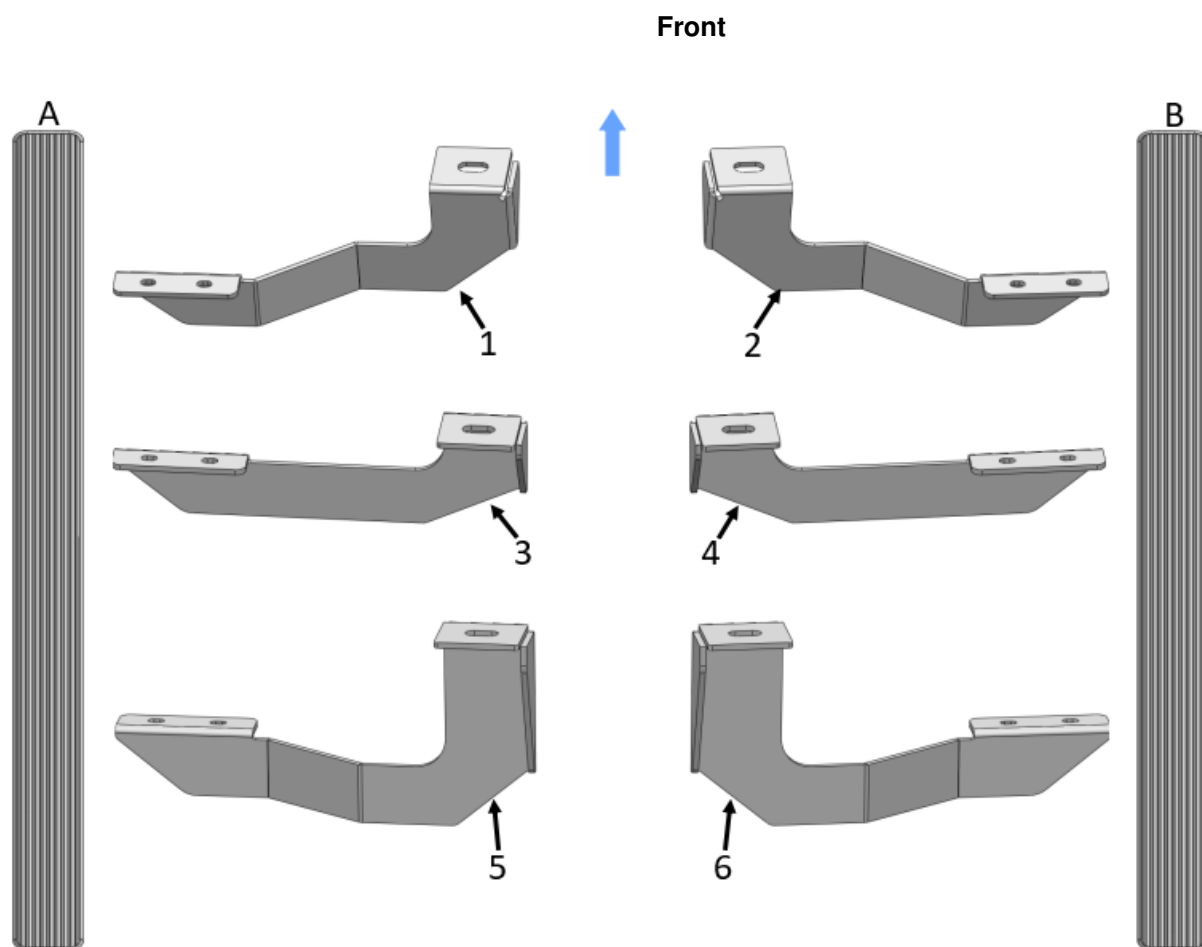
*BODY PANEL MOUNT

*NO DRILLING REQUIRED

PART#: IB-022C&H

Fastener Size	Tightening Torque (ft-lbs)	Required
6mm	6-7	X
8mm	16-18	√
10mm	31-32	X
12mm	56-58	X
14mm	92-94	X

PART LIST

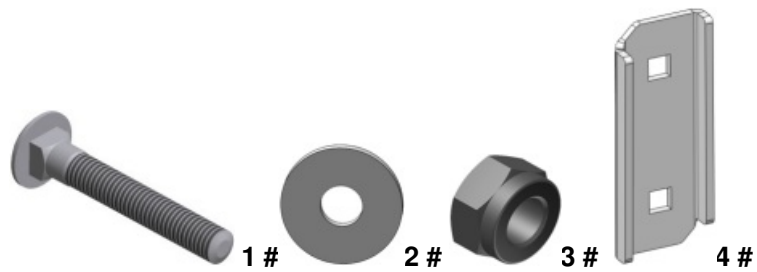


A: Driver Side Step Bar
B: Passenger Side Step Bar

1. Driver Front Mounting Bracket (DFM)
2. Passenger Front Mounting Bracket (PFM)
3. Driver Center Mounting Bracket (DCM)
4. Passenger Center Mounting Bracket (PCM)
5. Driver Rear Mounting Bracket (DRM)
6. Passenger Rear Mounting Bracket (PRM)

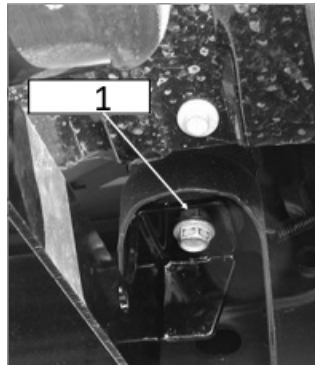
Hardware Package (For Stainless Steel Step Bar Installation)

Item	QTY	Description
1#	12	M8X1.25-35mm Carriage Bolts
2#	12	M8 Large Flat Washers
3#	12	M8 Nylon Lock Nuts
4#	6	Sliders (Packed with Step Bars)



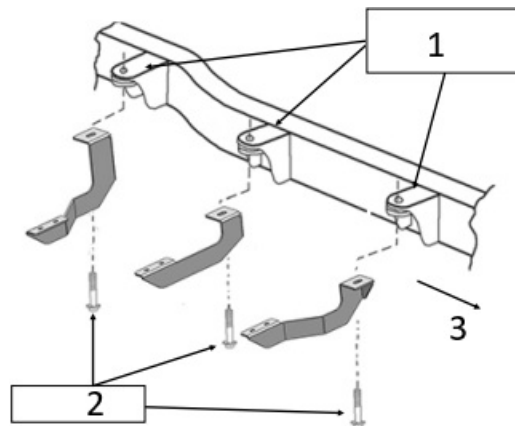
STEP 1

Start the installation under the Passenger side of the vehicle. Remove the front body mount hex bolt, **(Fig 1 & 2)**. Do not remove rubber bushings.



(Fig 1) Bracket Installed

1. Factory bolt



(Fig 2) Brackets Installation

1. Factory Body Mount Locations
2. Factory Bolts
3. Front

STEP 2

Hang the Passenger Front Mounting Bracket **(PFM)** to the body mount using the long factory hex bolt, **(Fig 1 & 2)**. Do not fully tighten hex bolt at this time.

STEP 3

Repeat **Steps 1 & 2** for Passenger Center Mounting Bracket (**PCM**) and Passenger Rear Mounting Bracket (**PRM**) installation, (**Fig 1 & 2**).

STEP 4

Once all (3) Passenger side mounting brackets are installed, then proceed to the Step Bar installation. (**Figs 3 & 4**)

- (1) Select (1) Slider and (2) M8X1.25-35mm Carriage Bolts;
- (2) Install (2) M8X1.25-35mm Carriage Bolts in (1) Slider.
- (3) Slide the Slider (with carriage bolts) to the Step Bar.
- (4) Repeat to install the other (2) sliders to the step bar.
- (5) Attach the Step Bar (with the Sliders) onto the installed mounting brackets. Position the Sliders to the installed brackets. Secure the Step Bar to the installed Brackets by using (6) M8 Large Flat Washers and (6) M8 Nylon Lock Nuts and (3) Sliders, (Fig 4). Do not fully tighten hardware at this time.

Note: The Sliders are packed with the Step Bars.

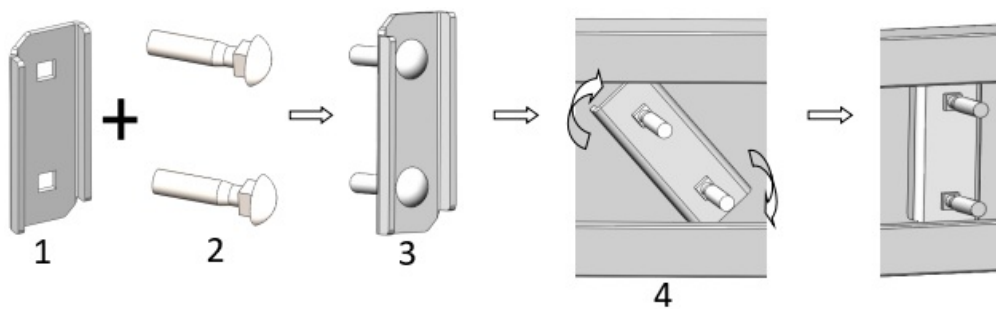
Level and adjust the Step Bar and fully tighten all hardware.

Repeat **Steps 1-4** for the other side Step Bar installation. **The installation is completed!!!**

Attention

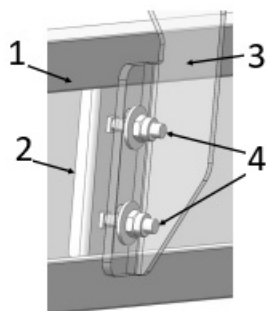
Do periodic inspections to the installation to make sure that all hardware is secure and tight.

In order to protect your bars/boards, please use mild soap/non-abrasive products for cleaning only.



(Fig 3) Slider Installation

1. Slider
2. (2) Carriage Bolts
3. Slider with (2) Carriage Bolts
4. Step Bar (Bottom View)



(Fig 4) Step Bar Installation

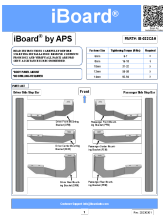
1. Step Bar
2. Slider (w/ installed Carriage Bolts)
3. Mounting Bracket

- 4. (2) M8 Large Flat Washers
(2) M8 Nylon Lock Nuts

Customer Support: info@iboardauto.com

Rev. 20230301

Documents / Resources

	<p>iBoard IB-022C&H Running Boards Nerf Bars Side Steps Step Bars [pdf] Installation Guide IB-022C H Running Boards Nerf Bars Side Steps Step Bars, IB-022C H, Running Boards Nerf B ars Side Steps Step Bars, Boards Nerf Bars Side Steps Step Bars, Bars Side Steps Step Bars, Side Steps Step Bars, Steps Step Bars</p>
---	--

References

- [User Manual](#)

[Manuals+](#), [Privacy Policy](#)

This website is an independent publication and is neither affiliated with nor endorsed by any of the trademark owners. The "Bluetooth®" word mark and logos are registered trademarks owned by Bluetooth SIG, Inc. The "Wi-Fi®" word mark and logos are registered trademarks owned by the Wi-Fi Alliance. Any use of these marks on this website does not imply any affiliation with or endorsement.