

iBoard IB-014C Running Boards (Nerf Bars)



# iBoard IB-014C Running Boards (Nerf Bars) Instruction Manual

[Home](#) » [iBoard](#) » iBoard IB-014C Running Boards (Nerf Bars) Instruction Manual 

## Contents

- [1 iBoard IB-014C Running Boards \(Nerf Bars\)](#)
- [2 Product Usage Instructions](#)
- [3 FAQ](#)
- [4 PART LIST](#)
- [5 Hardware Package A \(For Bracket Installation\)](#)
- [6 INSTALLATION](#)
- [7 Documents / Resources](#)
  - [7.1 References](#)
- [8 Related Posts](#)

# iBoard®

iBoard IB-014C Running Boards (Nerf Bars)



## Specifications

- Product Name: Step Bar Installation Kit
- Model Number: IB-014C&H
- Fastener Sizes: 6mm, 8mm, 10mm, 12mm, 14mm
- Tightening Torque (ft-lbs): 6-7 (6mm), 16-18 (8mm), 31-32 (10mm), 56-58 (12mm), 92-94 (14mm)

## Product Usage Instructions

### Step 1: Removing Factory Body Mount Bolt

Start installation from the driver side front of the vehicle.  
Remove the factory body mount bolt as shown in Fig 1.

### Step 2: Attaching Driver Front Mounting Bracket (DFM)

Attach the Driver Front Mounting Bracket (DFM) to the front body mount using the provided hardware. Make sure to adjust the position of the bracket to prevent contact with other components.

### Step 3: Installing Driver Rear Mounting Bracket (DRM) and Support Bracket

Move to the rear mounting location and install the Driver Rear Mounting Bracket (DRM). Attach the Driver Rear Support Bracket (DRS/PRS) to the back of the DRM using the specified hardware. Do not fully tighten at this time.

### Step 4: Slider and Step Bar Installation

Install sliders with carriage bolts as shown in Fig 4. Attach the Step Bar to the sliders for completion of the installation process.

## FAQ

**Q: Can I use power tools for installation?**

A: We recommend using hand tools to prevent damage to threads due to the strong thread-locking compound used on body bolts.

**Q: What should I do if a part is missing?**

A: Contact customer support at [info@iboardauto.com](mailto:info@iboardauto.com) for assistance with missing parts.

PART#: IB-014C&H

READ INSTRUCTIONS CAREFULLY BEFORE START ING INSTALLATION. REMOVE CONTENTS FROM BOX AND VERIFY ALL PARTS ARE PRE-SENT. ASSISTANCE IS RECOMMENDED.

- BODY FRAME MOUNT
- DRILLING IS REQUIRED

Fastener Size	Tightening Torque (ft-lbs)	Required
6mm	6-7	X
8mm	16-18	√
10mm	31-32	√
12mm	56-58	√
14mm	92-94	X

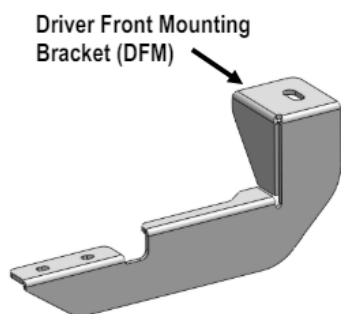
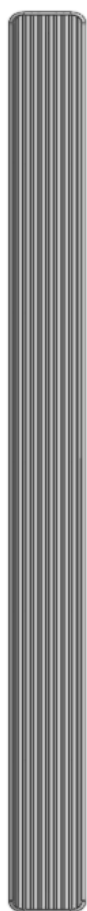
**PART LIST**

## PART LIST

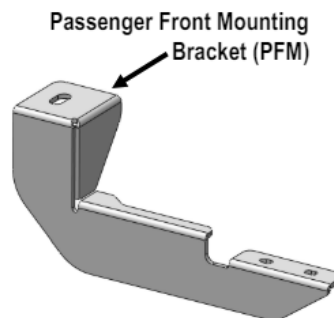
Driver Side Step Bar

Front

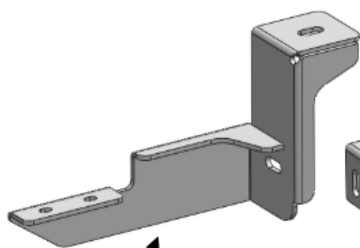
Passenger Side Step Bar



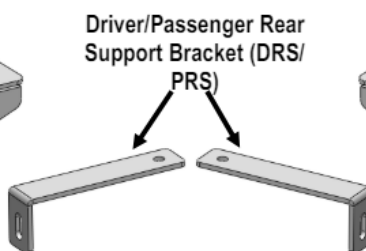
Driver Front Mounting Bracket (DFM)



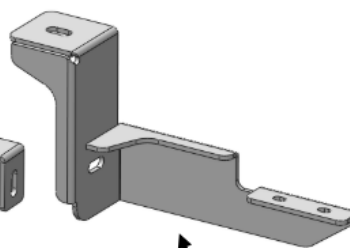
Passenger Front Mounting Bracket (PFM)



Driver Rear Mounting Bracket (DRM)



Driver/Passenger Rear Support Bracket (DRS/PRS)



Passenger Rear Mounting Bracket (PRM)



**Hardware Package A (For Bracket Installation)**

Hardware Package A (For Bracket Installation)					
Item	QTY	Description	Item	QTY	Description
1#	4	M12X1.75-120mm Hex Bolts	5#	8	M10 Large Flat Washers
2#	4	M12 Large Flat Washers	6#	4	M10 Lock Washers
3#	4	M12 Lock Washers	7#	4	M10 Hex Nuts
4#	4	M10X1.5-35mm Hex Bolts			

1 #
2 #
3 #
4#
5#
6#
7 #

Hardware Package B (For Stainless Steel Step Bar Installation)					
Item	QTY	Description	Item	QTY	Description
1#	8	M8X1.25-35mm Carriage Bolts	3#	8	M8 Nylon Lock Nuts
2#	8	M8 Large Flat Washers	4#	4	Sliders (Packed with Step Bars)

1 #
2 #
3 #
4 #

**IMPORTANT ALERT:** GM uses a very strong thread-locking compound on all body bolts. Use of an air assisted impact ratchet can cause damage to the threads on factory body mount bolts and the internal nut assembly because of this thread locking compound. We only recommend the use of hand tools to slowly remove and reinstall body mount bolts on all GM vehicles.

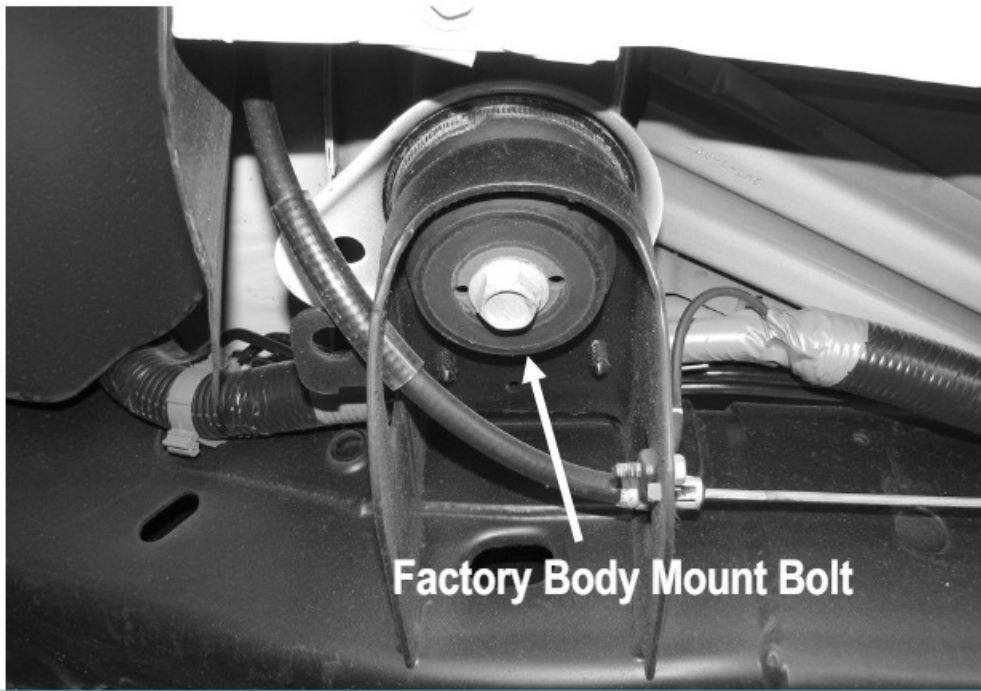
**CRITICAL INFORMATION:** If during the removal process, it becomes increasingly difficult to unscrew the body mount bolt with hand tools, tighten the bolt several rotations to clear the thread locking compound from the threads, then reverse direction and continue to unscrew until the body mount bolt is out. Repeat this process as necessary on all GM body mount bolts. Use of an appropriate anti-seize compound is highly recommended for re-installation. Tighten body mount bolt to factory torque specifications for your particular model year.

## INSTALLATION



### STEP 1

Start installation from the driver side front of the vehicle. Re-move the factory body mount bolt.

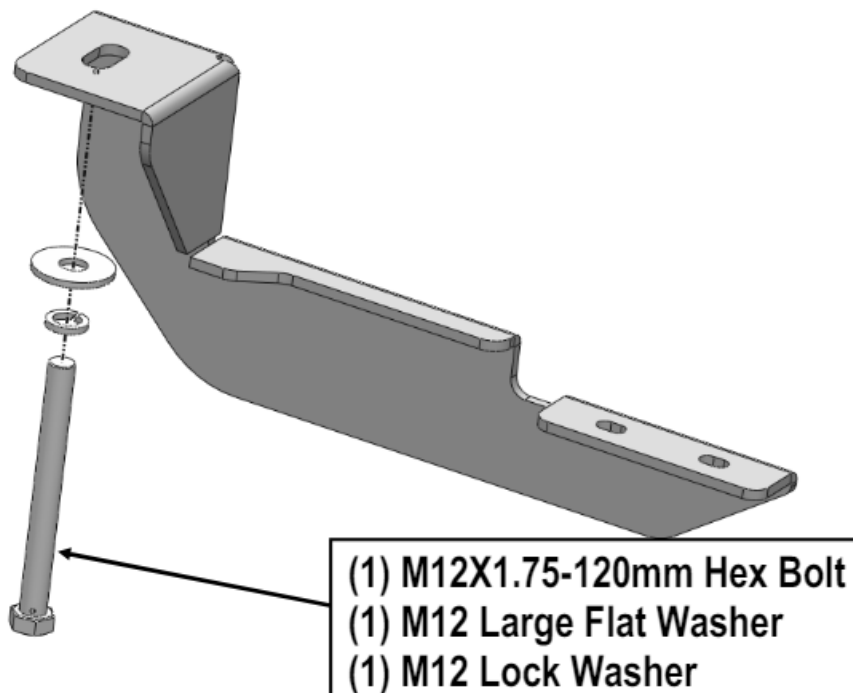


**(Fig 1) Example Of Gm Factory Body Mount Bolt**

**STEP 2**

Attach the Driver Front Mounting Bracket (DFM) to the front body mount with (1) M12X1.75-120mm Hex Bolt, (1) M12 Lock Washer and (1) M12 Large Flat Washer, (Fig 2). Do not fully tighten hardware at this time.

**IMPORTANT!** To prevent unnecessary noise, adjust the position of all Mounting Brackets, make sure the Mounting Brackets no contact with the factory steel body mount bracket or emergency brake cables.



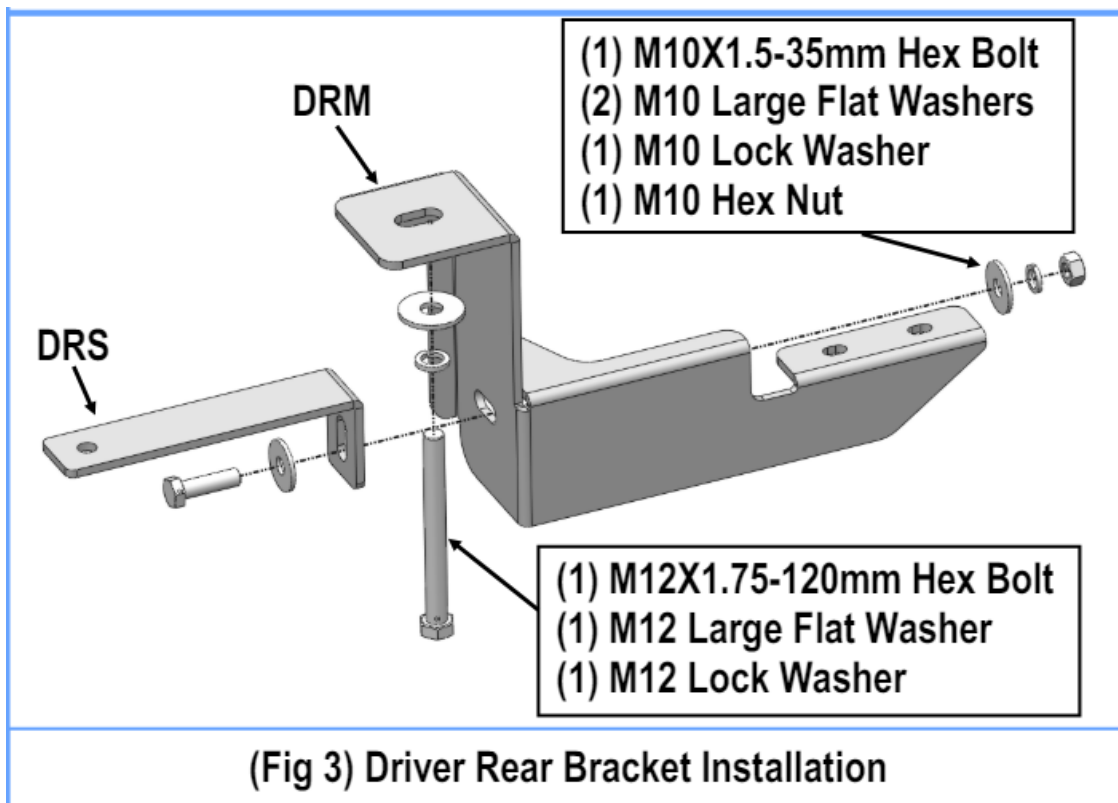
**(Fig 2) Driver Front Mounting Bracket Installation**

**STEP 3**

Move to the rear mounting location. Repeat Step 2 for the Driver Rear Mounting Bracket installation, (Fig 3). Do

not fully tighten hardware at this time.

Select (1) Driver Rear Support Bracket (DRS/PRS). Attach the short end of the Support Bracket to the back of the Driver Rear Mounting Bracket with (1) M10X1.5-35mm Hex Bolt, (2) M10 Large Flat Washers, (1) M10 Lock Washer and (1) M10 Hex Nut, (Fig 3). Do not fully tighten hardware at this time.



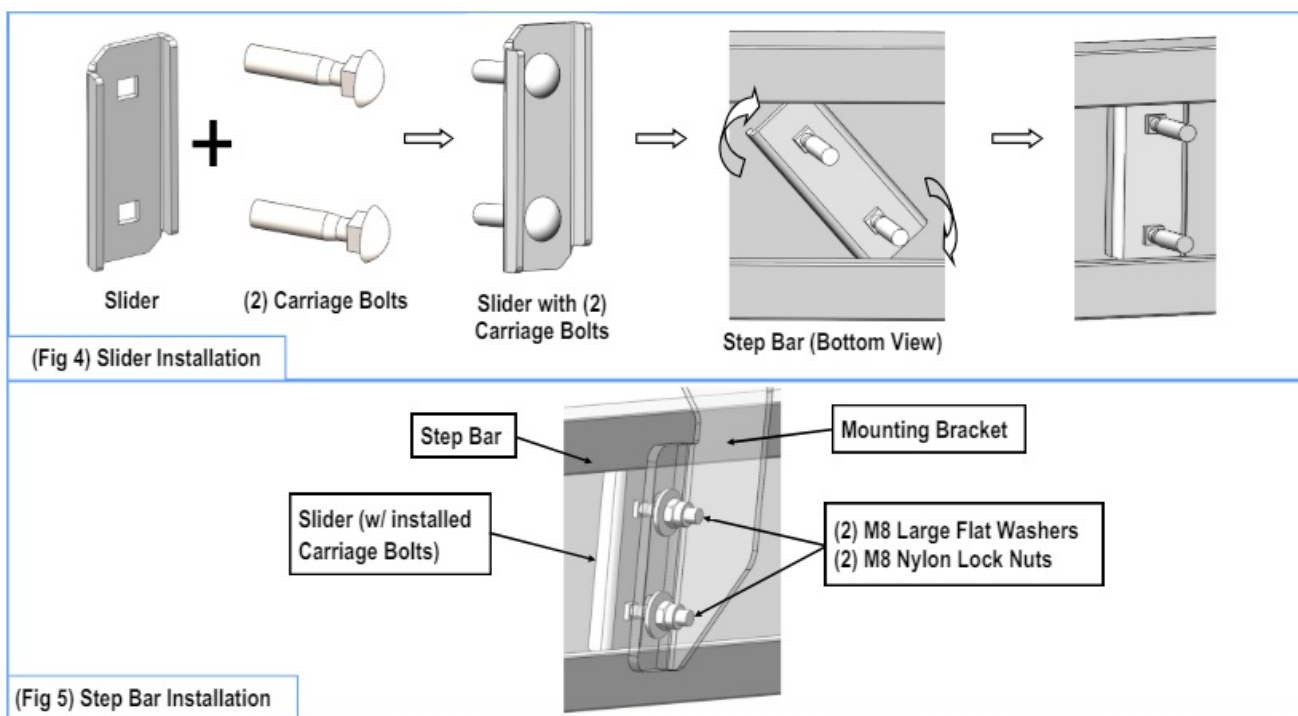
#### STEP 4

Once all (2) Driver side mounting brackets are installed, then proceed to the Step Bar installation. (Figs 4&5)

1. Select (1) Slider and (2) M8X1.25-35mm Carriage Bolts;
2. Install (2) M8X1.25-35mm Carriage Bolts in (1) Slider.
3. Slide the Slider (with carriage bolts) to the Step Bar.
4. Repeat to install the other (1) slider to the step bar.
5. Attach the Step Bar (with the Sliders) onto the installed mounting brackets. Position the Sliders to the installed brackets. Secure the Step Bar to the installed Brackets by using (4) M8 Large Flat Washers and (4) M8 Nylon Lock Nuts and (2) Sliders, (Fig 5). Do not fully tighten hardware at this time.

Note: The Sliders are packed with the Step Bars.

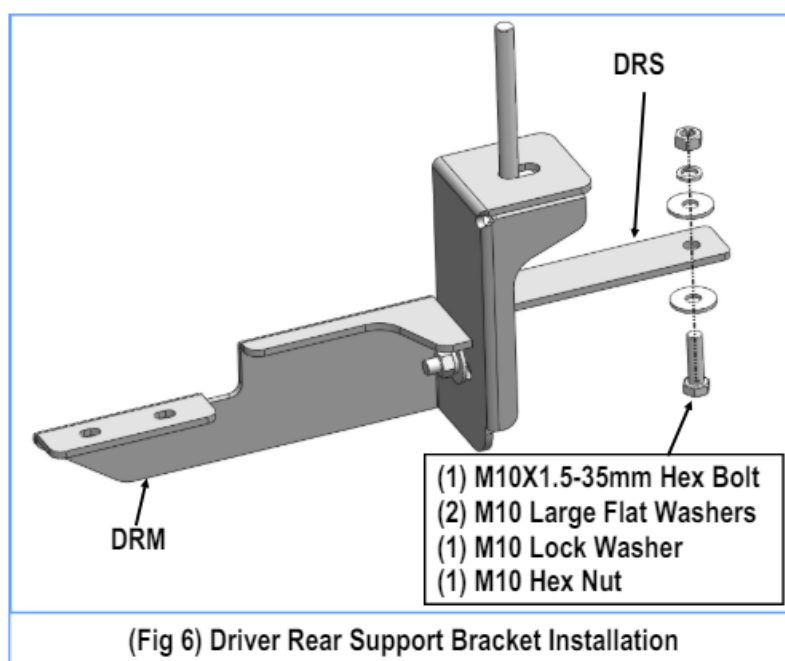
Level and adjust the Step Bar and fully tighten all hardware.



## STEP 5

Using the hole in the long end of the Support Bracket as a guide, drill a 7/16" hole in the bottom of the frame. Do not drill close to the edge of the frame. **IMPORTANT!** Any cutting or drilling tool may break or shatter. Government regulations require safety glasses & equipment at all times when cutting or drilling.

Then, attach the Driver Rear Support Bracket (DRS/PRS) to the frame with (1) M10X1.5-35mm Hex Bolt, (2) M10 Large Flat Washers, (1) M10 Lock Washer and (1) M10 Hex Nut, (Fig 6). Do not fully tighten hardware at this time.



## STEP 6

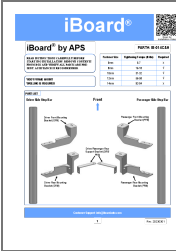
Level and adjust the Step Bar and fully tighten all hardware. Repeat Steps 1-6 for other side Step Bar installation. The installation is completed!!!

## Attention

Do periodic inspections to the installation to make sure that all hardware is secure and tight. In order to protect your bars/boards, please use mild soap/non-abrasive products for cleaning only.



Documents / Resources



[iBoard IB-014C Running Boards \(Nerf Bars\)](#) [pdf] Instruction Manual  
IB-014C Running Boards Nerf Bars, IB-014C, Running Boards Nerf Bars, Boards Nerf Bars, Nerf Bars, Bars

References

- [User Manual](#)

[Manuals+](#), [Privacy Policy](#)

This website is an independent publication and is neither affiliated with nor endorsed by any of the trademark owners. The "Bluetooth®" word mark and logos are registered trademarks owned by Bluetooth SIG, Inc. The "Wi-Fi®" word mark and logos are registered trademarks owned by the Wi-Fi Alliance. Any use of these marks on this website does not imply any affiliation with or endorsement.