



iBoard IB-007C&H Side Step Bars Installation Guide

[Home](#) » [iBoard](#) » iBoard IB-007C&H Side Step Bars Installation Guide 

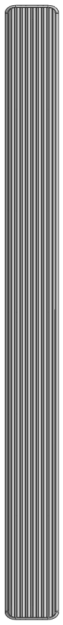
iBoard IB-007C&H Side Step Bars Installation Guide



READ INSTRUCTIONS CAREFULLY BEFORE START ING INSTALLATION. REMOVE CONTENTS FROM BOX AND VERIFY ALL PARTS ARE PRESENT. ASSISTANCE IS RECOMMENDED.

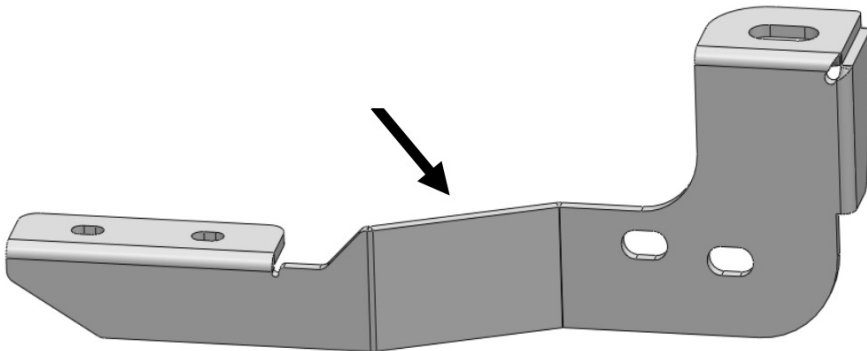
*BODY FRAME MOUNT
*NO DRILLING REQUIRED

Driver Side Step Bar

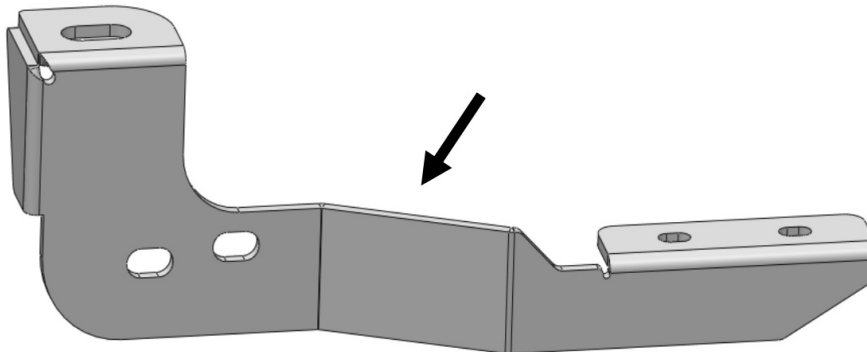


Front

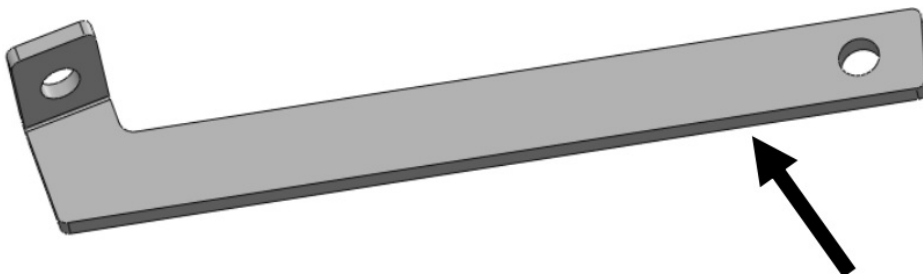
Driver Front Mounting Bracket (DFM)

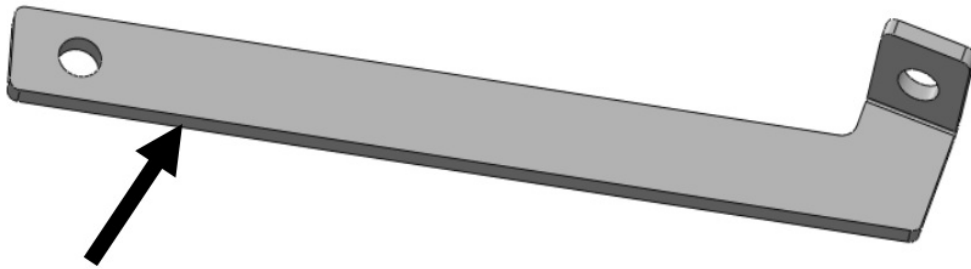


Passenger Front Mounting Bracket (PFM)

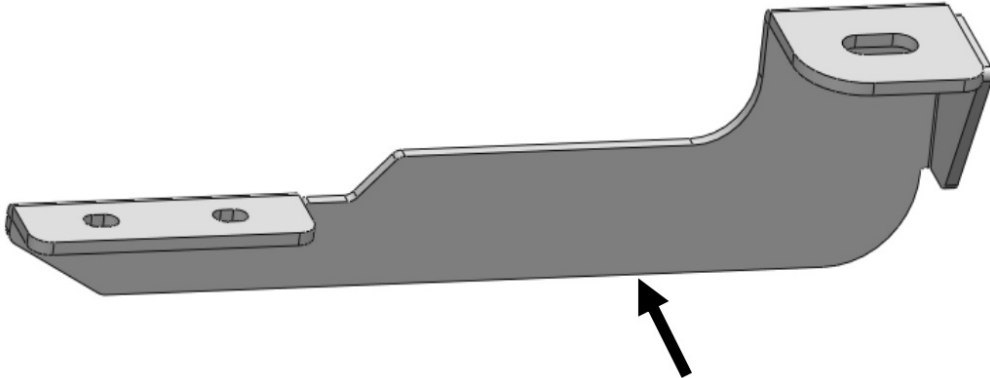


Driver Front Support Bracket (DFS)

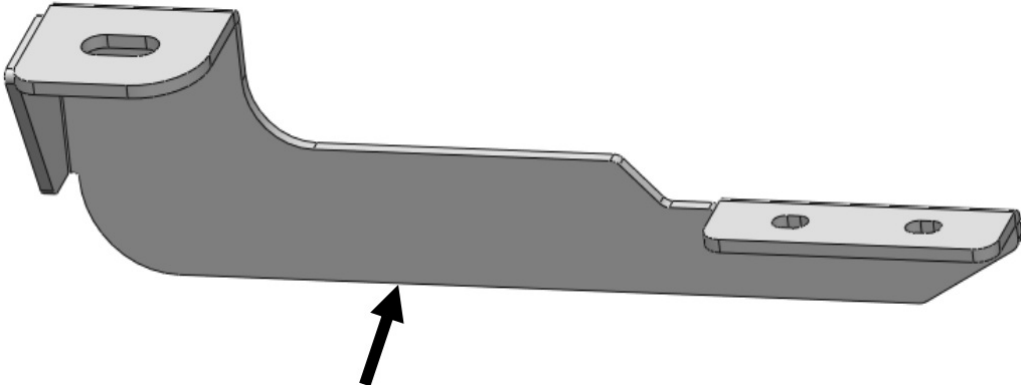




Passenger Front Support Bracket (PFS)



Passenger Front Support Bracket (PFS)



Driver Rear Mounting Bracket (DRM)
Passenger Side Step Bar



Fastener Size	Tightening Torque (ft-lbs)	Required
6mm	6-7	X
8mm	16-18	√
10mm	31-32	√
12mm	56-58	X
14mm	92-94	X

Contents

1 Hardware Package A (For Bracket Installation)

2 Documents / Resources

2.1 References

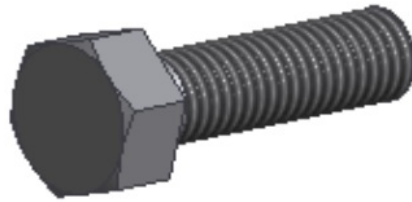
3 Related Posts

Hardware Package A (For Bracket Installation)

Hardware Package A (For Bracket Installation)		
Item	QTY	Description
1#	2	M10 Nut Plates
2#	4	M10X1.5-30 mm Hex Bolts
3#	6	M10 Flat Washers
4#	4	M10 Lock Washers
5#	2	M10X1.5 Hex Nuts



1 #



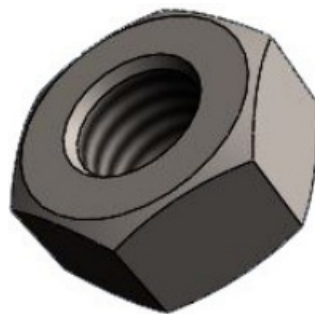
2 #



3 #



4 #



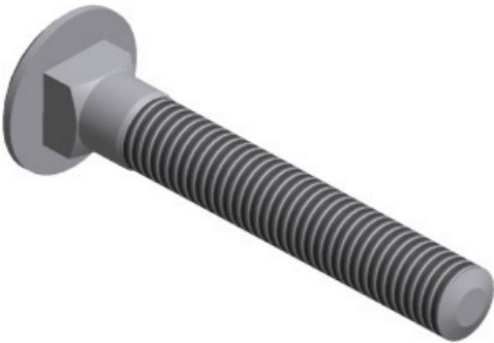
5 #

Hardware Package B (For Stainless Steel Step Bar Installation)

Item	8	M8X1.25-35 mm Carriage Bolts
1#	8	M8 Large Flat Washers

3#	8	M8 Nylon Lock Nuts
2#	4	Sliders (Packed with Step Bars)
4#	4	M8 Large Flat Washers

1 #



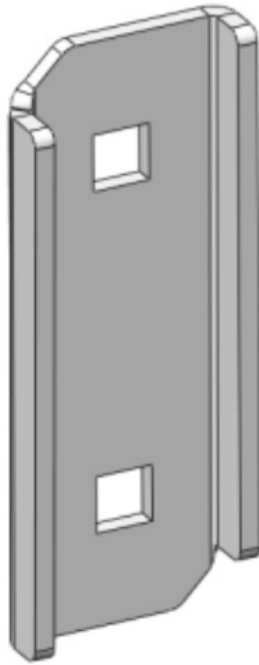
2 #



3#

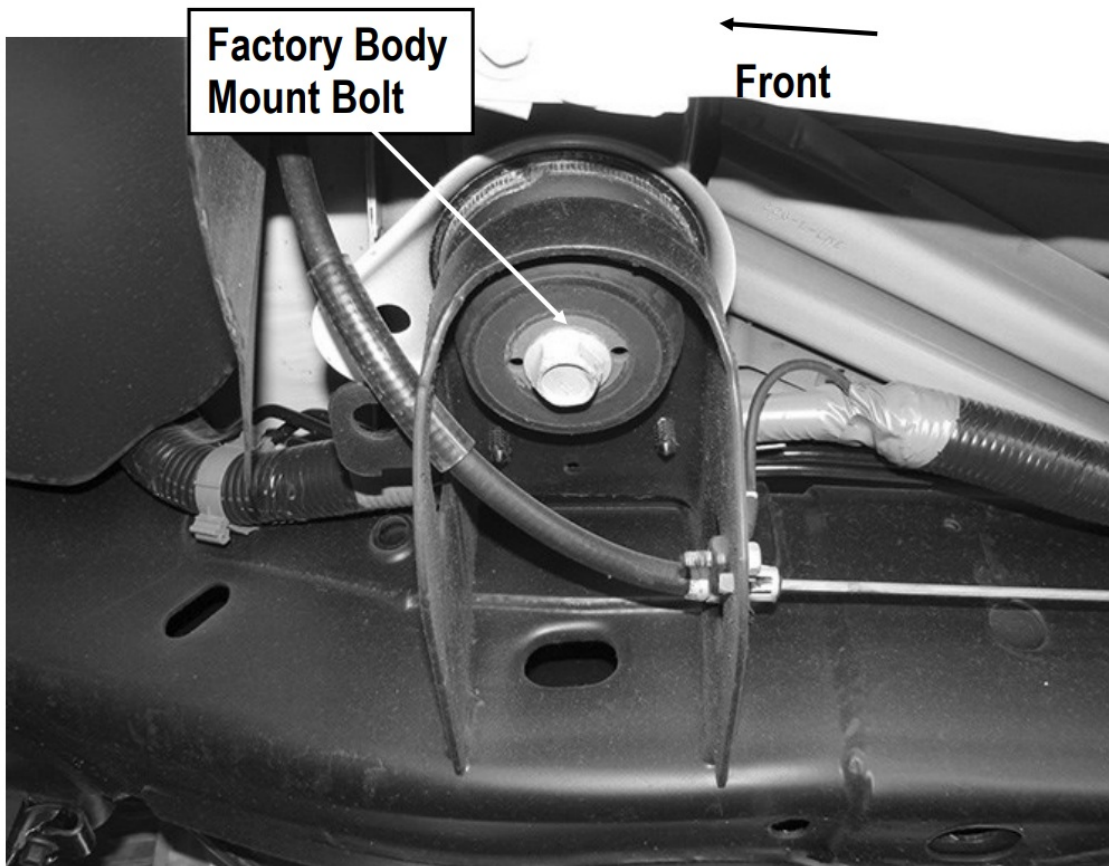


4 #



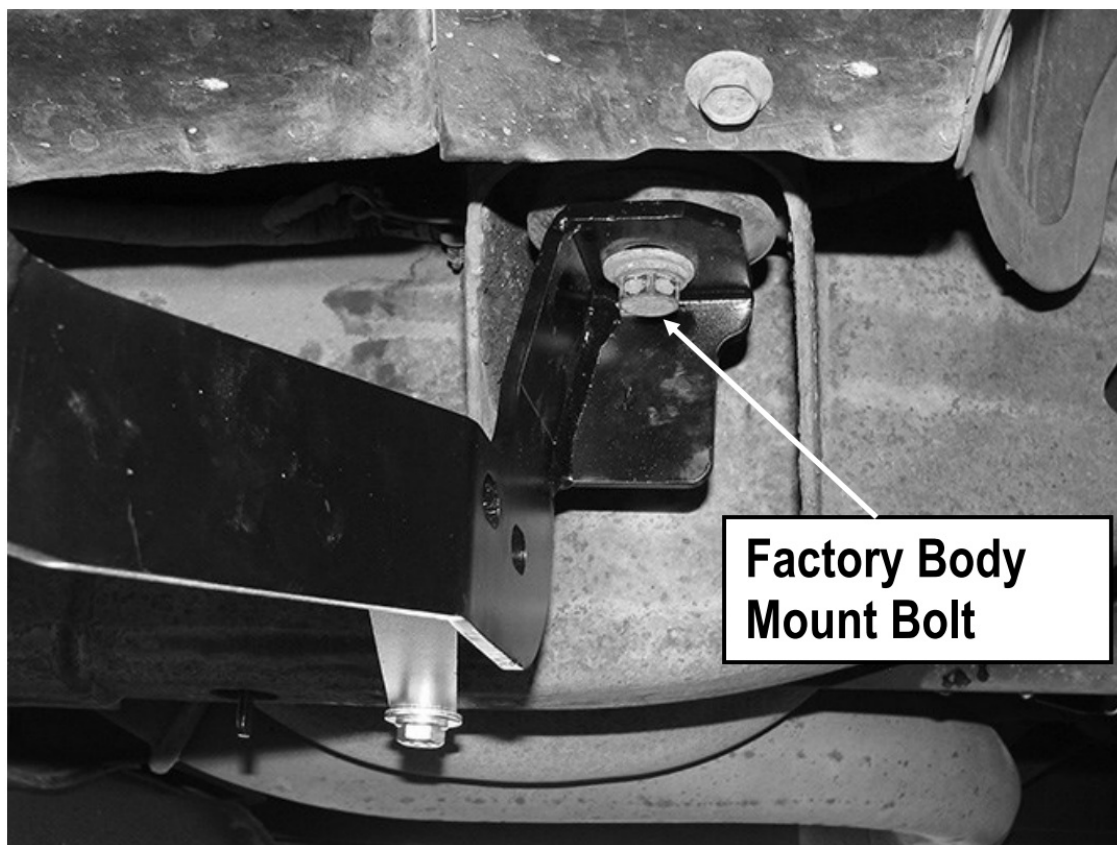
STEP 1

Start the installation under the Passenger side front of the vehicle. Remove the front body mount bolt, **(Fig 1)**. Do not remove rubber bushings.



(Fig 1) Passenger Side Front Mounting Location

STEP : 2 Attach the Passenger Front Mounting Bracket **(PFM)** to the body mount reusing the factory hex bolt, **(Fig 2)**. Do not fully tighten hardware at this time.



(Fig 2) Passenger Front Mounting Bracket (PFM) Installed

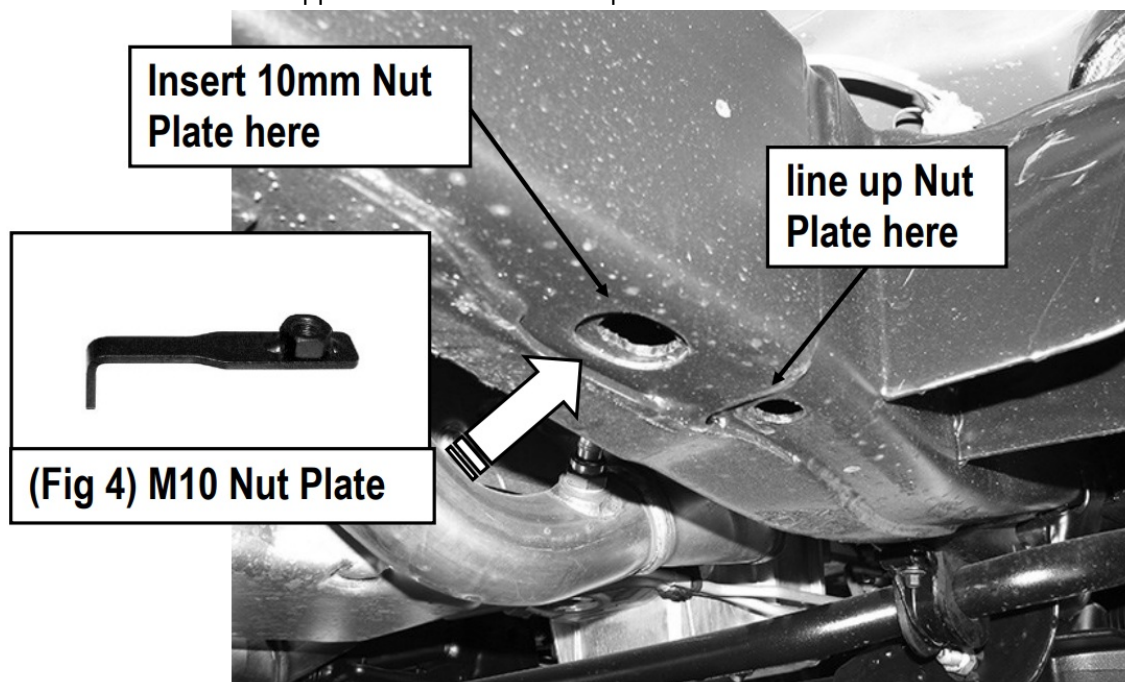
STEP : 3

Locate the two factory holes at the bottom of the frame beside the passenger side front body mount, **(Fig 3)**.

(Fig 3) Passenger Side Front Support Bracket Mounting Location

Insert (1) M10 Nut Plate, **(Fig 4)**, into the oval hole and line up the threaded nut with the round hole, **(Fig 3)**.

NOTE: Nut Plate and Support Brackets are not required on 11-14 2500/3500 models.



(Fig 3) Passenger Side Front Support Bracket Mounting Location

STEP : 4

Attach the flat end of the Passenger Front Support Bracket (PFS) to the installed M10 Nut Plate with (1) M10X1.5-

30mm Hex Bolt, (1) M10 Flat Washer and (1) M10 Lock Washer, **(Fig 5 & 6)**. Do not fully tighten hardware at this time.

Up to 2010 2500/3500 Models:

Note that the Front Support Bracket will not reach up to the Mounting Bracket, **(Fig 6)**. Tighten the Support Bracket to the M10 Nut Plate in the frame. Carefully push up on the Support Bracket until it reaches the inside hole in the Mounting Bracket.

Bolt the Support Bracket to the hole in the Mounting Bracket with (1) M10X1.5-30mm Hex Bolt, (2) M10 Flat Washers, (1) M10 Lock Washer and (1) M10X1.5 Hex Nut, **(Figs 6 & 7)**. Do not fully tighten hardware at this time.

NOTE: Bend Support Bracket up by hand to meet the inner hole in the Front Mounting Bracket.

Support Bracket not required on 2011-2014 2500-3500 Models

(1) M10X1.5-30mm Hex Bolt

(1) M10 Lock Washer

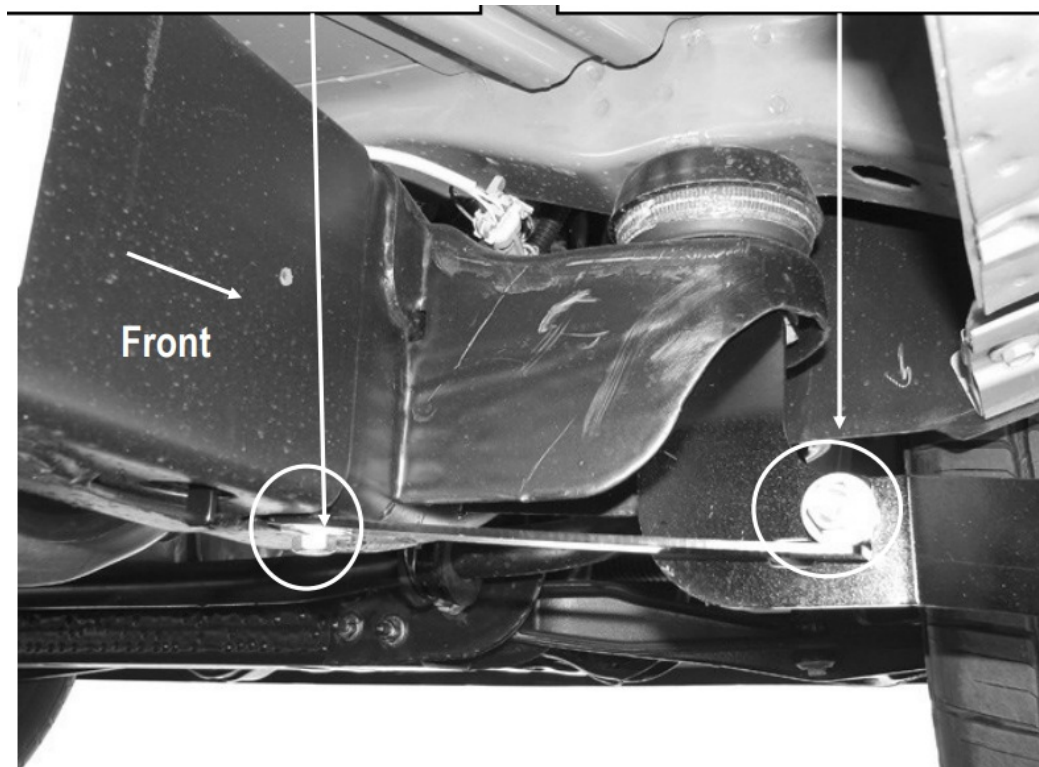
(1) M10 Flat Washer

(1) M10X1.5-30mm Hex Bolt

(1) M10 Lock Washer

(2) M10 Flat Washers

(1) M10X1.5 Hex Nut

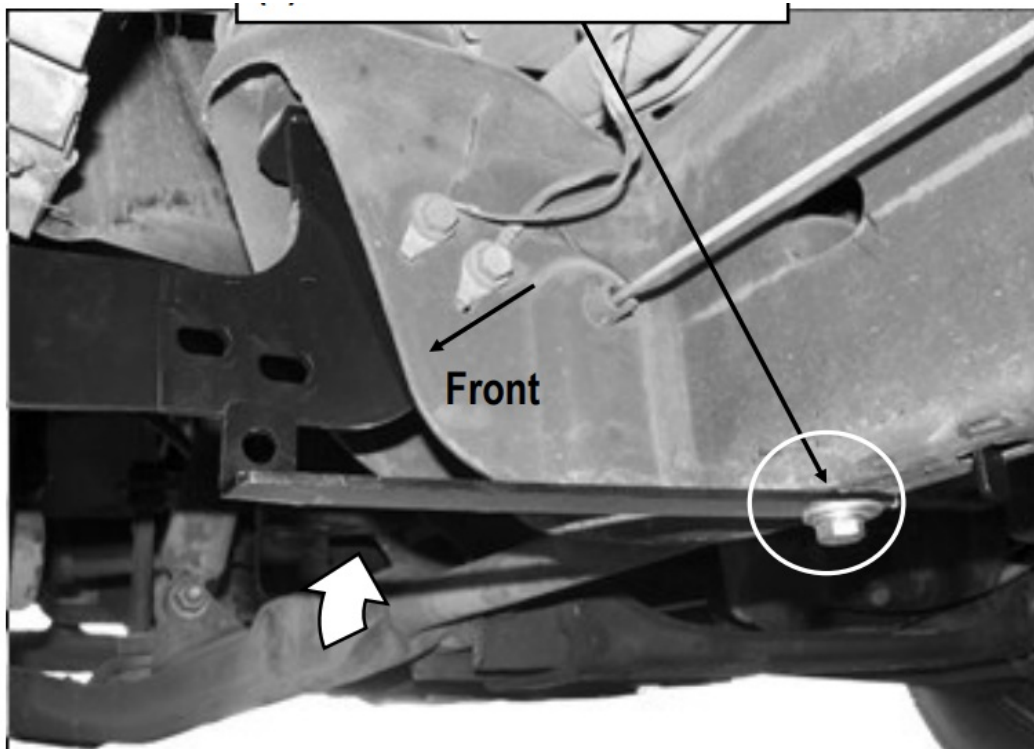


(Fig 5) Passenger Front Support Bracket (PFS) Installed (For 1500 Model)

(1) M10X1.5-30mm Hex Bolt

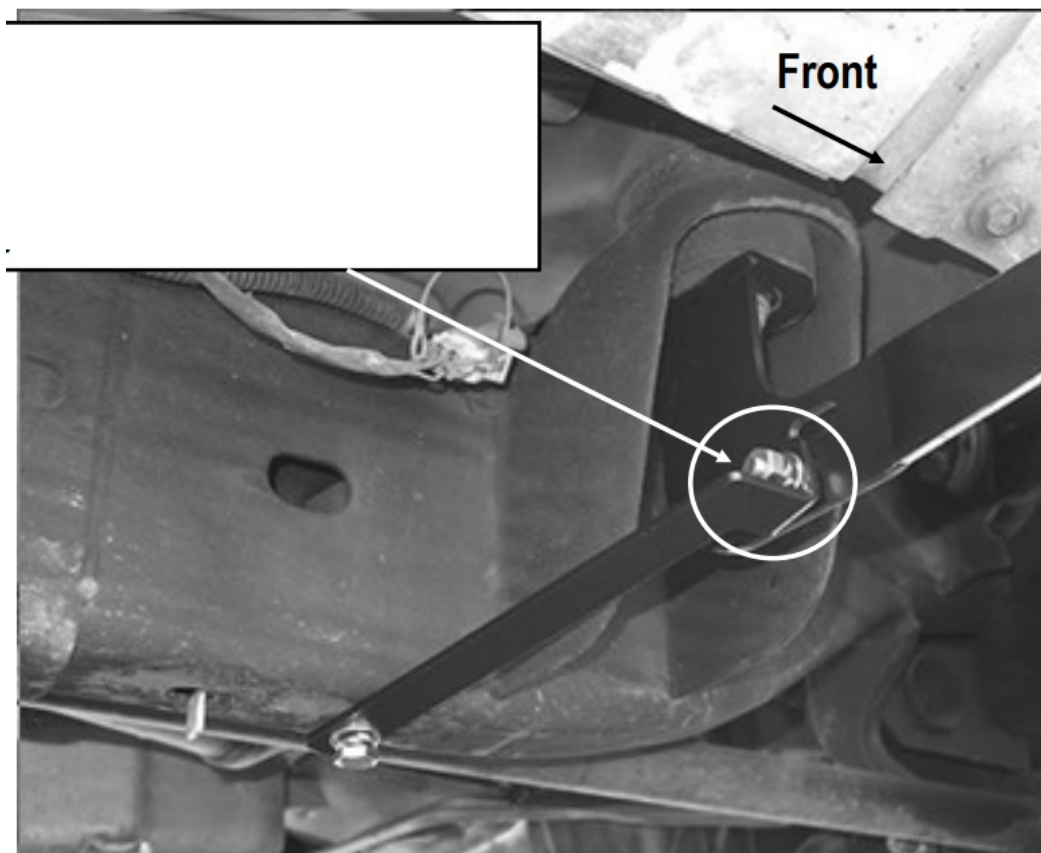
(1) M10 Lock Washer

(1) M10 Flat Washers



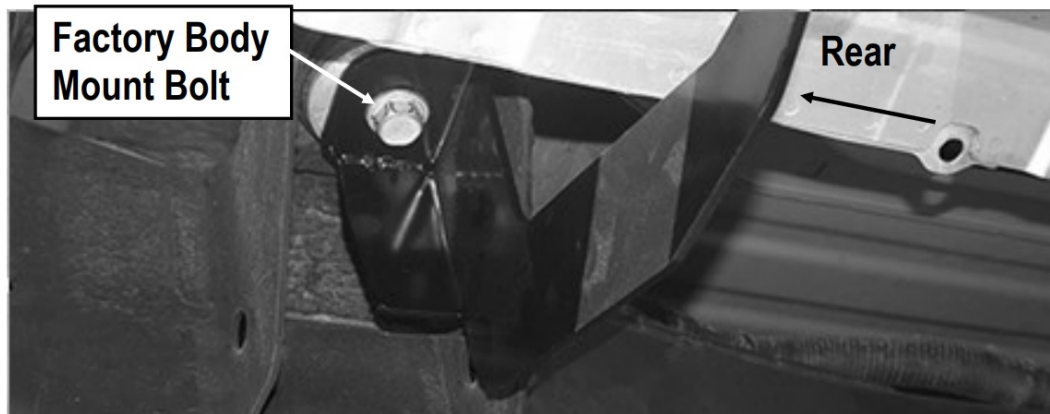
(Fig 6) Passenger Front Support Bracket Installed (For Up to 2010 2500/3500 Models)

- (1) M10X1.5-30mm Hex Bolt
- (1) M10 Lock Washer
- (2) M10 Flat Washers
- (1) M10X1.5 Hex Nut



(Fig 7) Passenger Front Support Bracket Installed

STEP : 5 Move to the Passenger Side Rear body mount. Repeat Steps 1 –4 to attach the Passenger Rear Mounting Bracket to the body mount, (Fig 8). Do not fully tighten hardware at this time.



(Fig 8) Passenger Rear Mounting Bracket (PRM) Installed

STEP : 6 Once all (2) Passenger side mounting brackets are installed, then proceed to the Step Bar installation. **(Figs 9 & 10)**

1. Select (1) Slider and (2) M8X1.25-35mm Carriage Bolts;
2. Install (2) M8X1.25-35mm Carriage Bolts in (1) Slider.
3. Slide the Slider (with carriage bolts) to the **Step Bar**.
4. Repeat to install the other (1) slider to the step bar.
5. Attach the Step Bar (with the Sliders) onto the installed mounting brackets. Position the Sliders to the installed brackets. Secure the Step Bar to the installed Brackets by using (4) M8 Large Flat Washers and (4) M8 Nylon Lock Nuts and (2) Sliders, (Fig 10). Do not fully tighten hardware at this time.

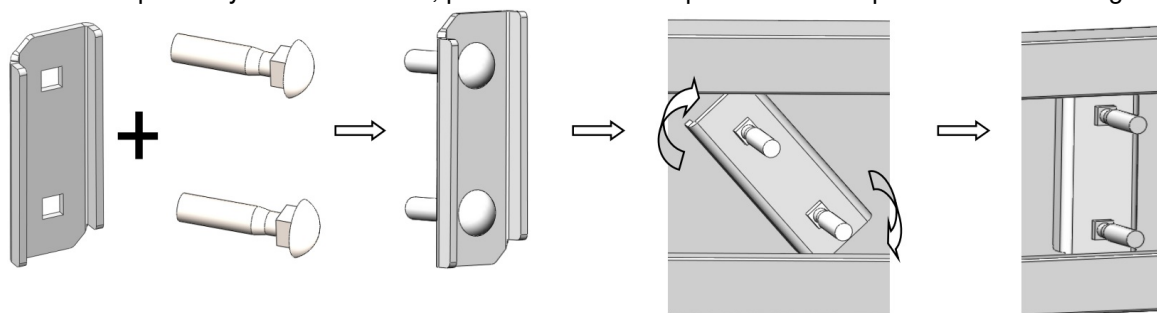
Note: The Sliders are packed with the Step Bars.

Level and adjust the Step Bar and fully tighten all hardware.

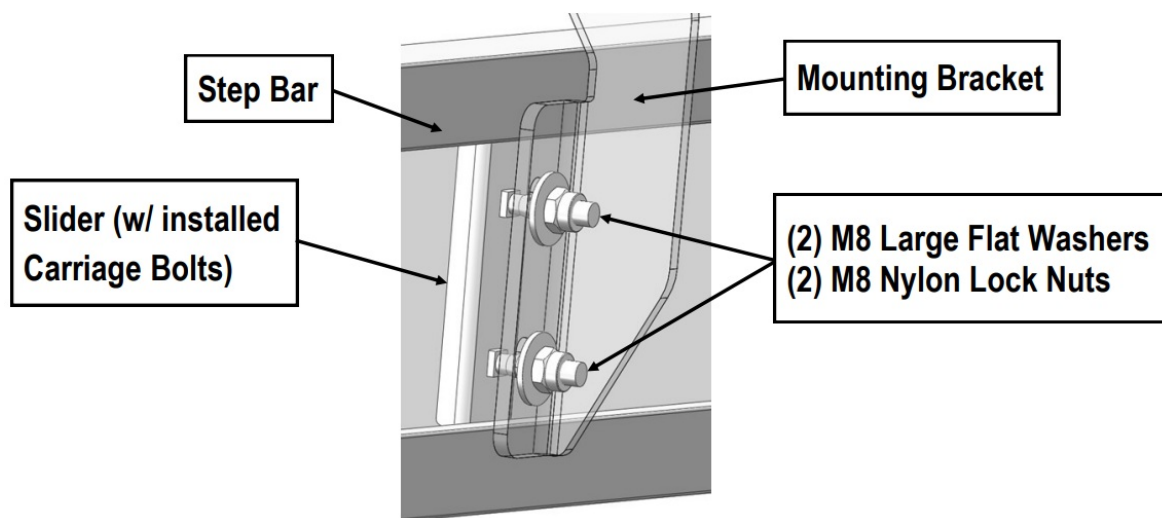
Repeat **Steps 1-6** for the other side Step Bar installation. **The installation is completed!!!**

Attention

Do periodic inspections to the installation to make sure that all hardware is secure and tight. In order to protect your bars/boards, please use mild soap/non-abrasive products for cleaning only.



Slider (2) Carriage Bolts Slider with (2) Carriage Bolts Step Bar (Bottom View)
(Fig 9) Slider Installation



(Fig 10) Step Bar Installation



Customer Support: info@iboardauto.com

iBoard®

Documents / Resources



The image shows the cover of a technical manual titled "iBoard® by APS". It features a QR code in the top right corner and a table of contents on the left side. The main title "iBoard IB-007C&H Side Step Bars" is prominently displayed in the center. Below the title, there is a subtitle "Installation Guide". The cover also includes a small diagram of the step bars and a list of contents.

[iBoard IB-007C&H Side Step Bars](#) [pdf] Installation Guide
IB-007C H Side Step Bars, IB-007C H, Side Step Bars, Step Bars, Bars

References

- [User Manual](#)

Manuals+, Privacy Policy

This website is an independent publication and is neither affiliated with nor endorsed by any of the trademark owners. The "Bluetooth®" word mark and logos are registered trademarks owned by Bluetooth SIG, Inc. The "Wi-Fi®" word mark and logos are registered trademarks owned by the Wi-Fi Alliance. Any use of these marks on this website does not imply any affiliation with or endorsement.