

IBEX DL 800 V-Strom Main Stand Instructions

[Home](#) » [IBEX](#) » IBEX DL 800 V-Strom Main Stand Instructions 

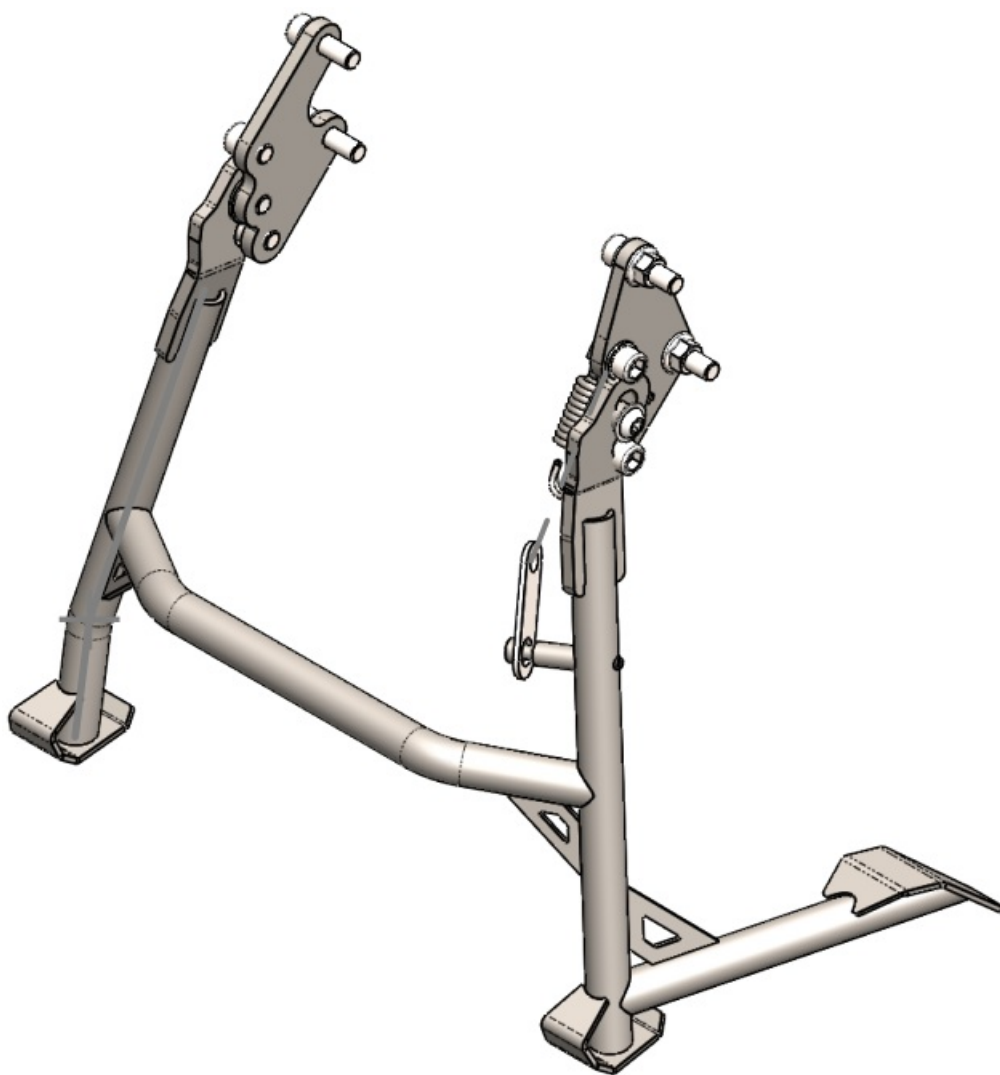


Mounting Instruction

Contents



- [1 DL 800 V-Strom Main Stand](#)
- [2 Legend](#)
- [3 Documents / Resources](#)
 - [3.1 References](#)
- [4 Related Posts](#)

DL 800 V-Strom Main Stand



RAL Farbton: Color:	Article number: Item No.:
9005 (deep black / jet black)	10010351

Rev.: ./.	Date of issue: 05.10.2023
centerstand kit	

 Max. Load	k.E. kg (n.R. lbs)
 Max. Speed	k.E. km/h (n.R. mp/h)

Attention

Cornering and ground clearance can be reduced by using this product!

No torque specifications: Use the torque defined by vehicle manufacturer! The standard torque in this table can be used as long as it is within the vehicle manufacturer's specifications.

For your own safety we recommend having installation and/ or servicing carried out by a specialist workshop. We

assumes no liability for damage caused by improper installation and/ or maintenance work.

8.8	coarse thread	M4	M5	M6	M8	M10	M12
	torque	2,8	5,5	9,6	23	46	79
10.9	coarse thread	M4	M5	M6	M8	M10	M12
	torque	4,1	8,1	14	34	67	115

Thank you for choosing this quality product from IBEX!

The assembly and/or maintenance of this product requires a good technical understanding. For your own safety, we recommend that the assembly and/or maintenance is carried out by a specialist workshop. Our company assumes no liability for any damage caused by improper assembly or maintenance. Be sure to keep in mind all the notes provided in the assembly instructions. Please also note all the instructions relevant to the assembly in the vehicle manual. Nonobservance can cause damage to the vehicle or danger to the driver! Please keep the assembly instructions as a reference.

General Notes:

Observe any country-specific regulations by the legislature or homologation regulations.

Preparation:

Read the assembly instructions carefully and make sure all parts of the list are available. Make sure that your vehicle stands safely and can't fall over. Turn off the engine and pull the ignition key. If necessary, allow the engine/exhaust to cool down. When working on the electrics disconnect the vehicle battery. Be sure to use only suitable tools. If necessary get help with the assembly work by a second person.

Assembling:

According to vehicle manufacturers specification all demounted parts and connections must be reassembled or replaced by the parts and connections supplied by our company. If not stated different secure all threads with a medium-strong liquid screw protection. If not stated different by the vehicle manufacturer or our company, all bolts and nuts must be tightened according to A4/ISO. After assembly, make sure that all previously demounted parts and connections have been properly remounted.

Funktion Check:

After assembly, pay attention to the absolute freedom of movement and proper function of all vehicle parts. Cables, trains and hoses must not scrub or be clamped. Do a comprehensive functional check before the start of your journey. After 100 km please check the proper tightness of all parts and connections demounted during assembly.

Legend



View from the left in the direction of travel (left side)



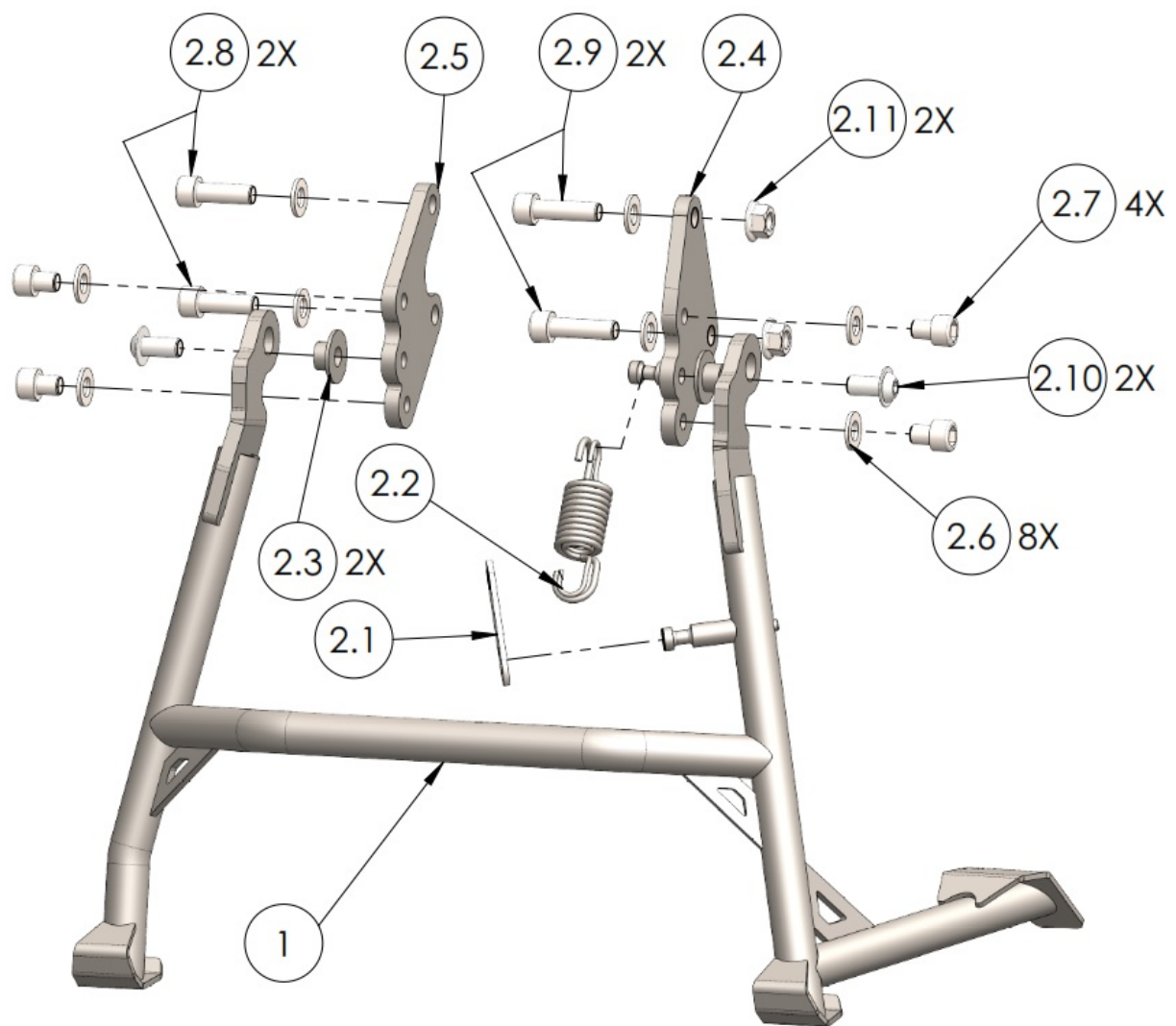
View from the right in the direction of travel (right side)



Positions nummer & Anzugs moment
(position number and torque)

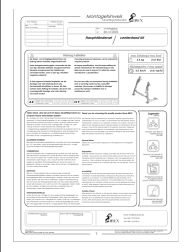


Use screw locking
(use screw lock)



Pos.No.	Drawing number	Description	Quantity	Nm	Special features
1	2921_0_11	centerstand compl.	1		
2	2921_0_29	centerstand kit	1		
2.1	2921_0_25	spring bracket	1		
2.2	1621_0_28	spring kit	1		
2.3	1280_0_21	spacer	2		
2.4	2921_2_26	holder compl.	1		
2.5	2921_1_28	retaining plate	1		
2.6	DIN 125 – A 10.5	washer	8		
2.7	DIN ISO 912 M10 x 12	hexagon socket screw	4	46	
2.8	DIN ISO 912 M10 x 30	hexagon socket screw	2	47	
2.9	DIN ISO 912 M10 x 35	hexagon socket screw	2	46	
2.1	DIN ISO 7380 F – M10 x 25	lenshead screw w.flange	2	46	
2.11	DIN 6927 – M10	lock nut with flange	2		

Documents / Resources

	<p>IBEX DL 800 V-Strom Main Stand [pdf] Instructions DL 800, DL 800 V-Strom Main Stand, V-Strom Main Stand, Main Stand, Stand</p>
---	--

References

- [🌐 pos.no in parked](#)
- [User Manual](#)