



IASUS IA-BMH Module Motorcycle Comm System User Manual

[Home](#) » [IASUS](#) » IASUS IA-BMH Module Motorcycle Comm System User Manual 

IASUS IA-BMH Module Motorcycle Comm System



Contents

- 1 Thank You
- 2 PACKAGE CONTENTS
- 3 SPECIFICATIONS
- 4 INSTALLING BMH MAGNETIC MOUNT
- 5 INSTALLING BMH MICROPHONE
- 6 AUDIO OUTPUT CONNECTOR
- 7 BMH PLACEMENT TIPS
- 8 BMH CHARGING
- 9 BLUETOOTH PAIRING
- 10 TRANSPARENCY MODE
 - 10.1 VOICE COMMAND
 - 10.2 TROUBLESHOOTING
 - 10.3 1-YEAR LIMITED WARRANTY
 - 10.4 FCC Warning
 - 10.5 CUSTOMER SUPPORT
- 11 Documents / Resources
 - 11.1 References
- 12 Related Posts

Thank You

Thank You for choosing the IASUS BMH Motorcycle Comm System Module, a precision crafted, functionally packed, personal communication device designed for your helmet.

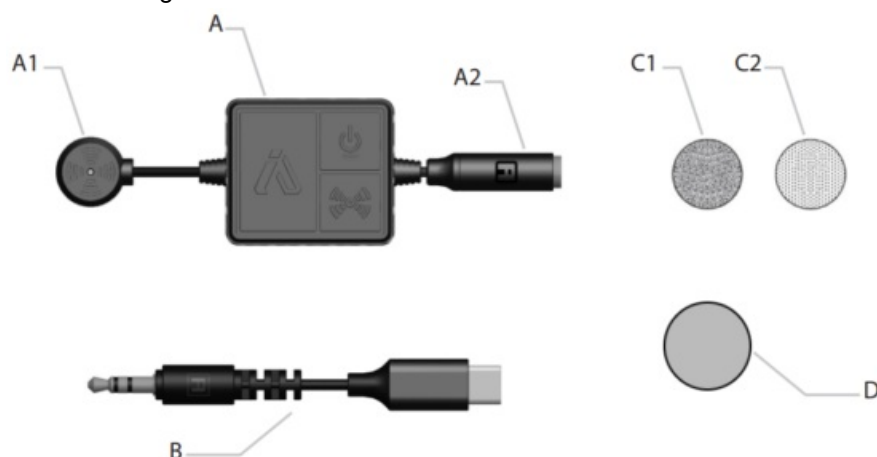
In this manual, you will find instructions to operate your BMH with Bluetooth enabled devices. Should you have any questions and require assistance with setup and usage, please feel free to visit our website:

www.iasus.concepts.com

or contact us directly at: info@iasus-concepts.com

PACKAGE CONTENTS

- A..... BMH Module
- A1 Microphone
- A2 3.5mm Audio Jack
- B..... Charging Cable
- C1..... 3M Velcro Adhesive (Loop)
- C2..... 3M Velcro Adhesive (Hook)
- NOTE:** C1 & C2 are pre-attached together
- D..... Magnetic Mount



SPECIFICATIONS

◀---▶ SUPPORTED PROFILES

AVRCP 1.6 HSP 1.2

A2DP 1.3.1 SPP 1.2

HFP 1.7 BLE 5.0



BATTERY

PLAYBACK TIME9 HOURS

CALL TIME10 HOURS

STAND-BY TIME250 HOURS

CHARGING TIME90 MINUTES

CHARGING SPECS5V

BATTERY CAPACITY150mAh



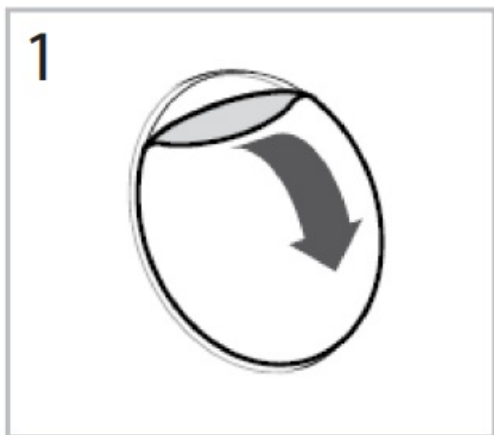
STANDARD

Ingress Protection Rating against dust and water

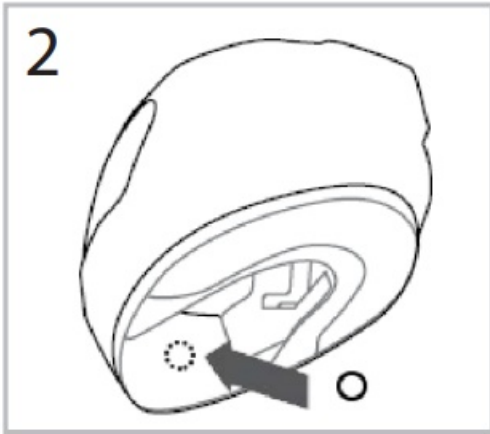
INSTALLING BMH MAGNETIC MOUNT

BMH Interface is designed to be positioned on the inside front section of your helmet through the use of a magnetic clip mount for easy installation and removal.

1. Clean the mounting surface of your helmet. Peel away the backing paper on the BMH Magnetic mount (D).



2. Place the magnetic mount into the chin opening of the helmet. Ensure there is sufficient space for the BMH to adhere to the magnetic mount before pressing firmly for a secure attachment.

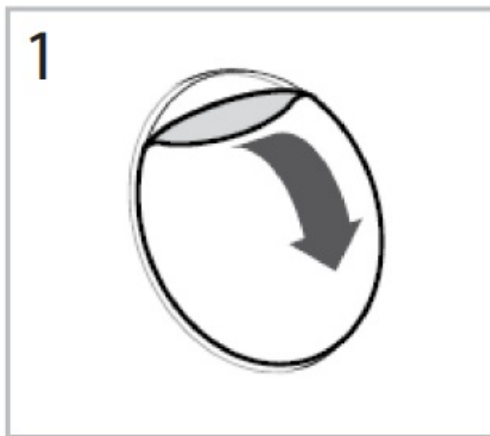


INSTALLING BMH MICROPHONE

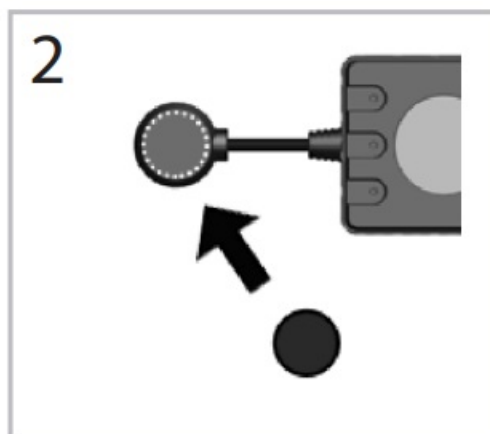
BMH Interface is designed to be positioned on the inside front section of your helmet through the use of a magnetic clip mount for easy installation and removal.

1. Clean the mounting surface of your helmet and the BMH microphone.

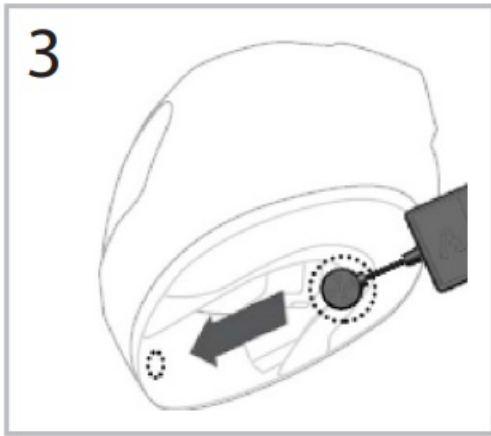
Peel away one side of the backing paper on the BMH Microphone velcro mount (C1/C2).



2. Position the sticky side onto the BMH Microphone (A1). Apply firm pressure to ensure proper adhesion.



3. Remove the remaining paper from the velcro mount (C1/C2) that is now attached to the mic. Place the BMH onto the magnetic mount and position the mic inside the helmet directly in front of your mouth for optimal clear audio.



AUDIO OUTPUT CONNECTOR

BMH is equipped with a 3.5mm audio output connector that is optimized for the following IASUS audio accessories :

- X Sound 4 – High Definition Helmet Speakers
- X Sound 2.1R – Helmet Speakers
- iA Waterproof Earbuds
- Future IASUS helmet speakers and earbuds products

IASUS cannot guarantee the compatibility and sound quality of any third party helmet speakers and earbuds when used with BMH as they may not be acoustically tuned to IASUS audio standards.



BMH PLACEMENT TIPS

The positioning of the BMH may vary depending on the helmet. It's advisable to experiment with different placements and positions before adhering the mount and mic Velcro inside the helmet. Also, remember to orient the 3.5mm speaker plug towards the back of the helmet. This ensures that when you connect the helmet speaker, you can conveniently tuck the plug and speakers into the helmet lining.




To maximize the microphone input capabilities, position the microphone directly in line with your mouth. Provide sufficient space between the base and your mouth for both comfort and safety.

BMH CHARGING

A full charge completes in about 90 minutes. The background LED on the Center Button will be red until it is fully charged, at which point turns blue.

To extend the life of the battery, we recommend not using fast chargers ($>500\text{mA}$). To avoid damage to the battery, refrain from draining completely to zero and leaving it uncharged for an extended amount of time. Keep the BMH fully charged if stored for extended periods of time.

 The BMH battery is sealed inside the unit and is not user serviceable. Please contact IASUS for issues with the battery.

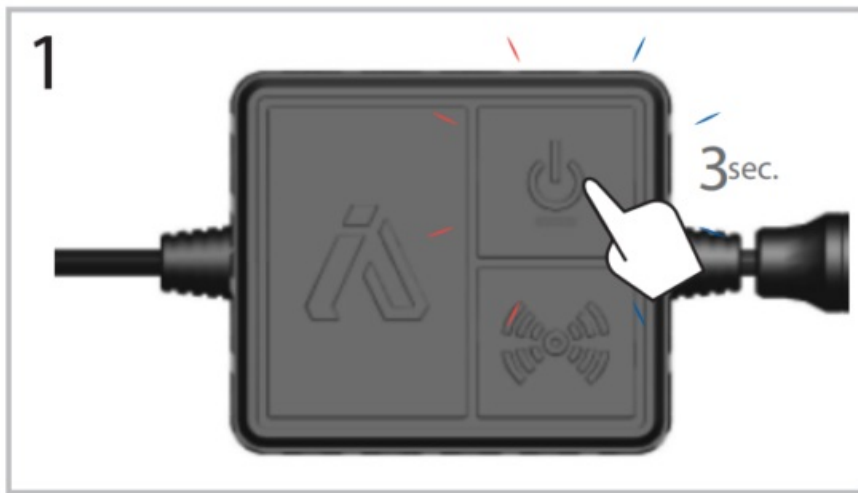
For proper disposal of this product at the end of its working life, consult your local laws for proper electronics and battery recycling and disposal. If you are not sure, do not deposit in unsorted waste but drop it off at your local or regional collection point for recycling to prevent any possible harm to the environment or human health.



BLUETOOTH PAIRING

TURN PAIRING MODE ON

Press and Hold Center Button for at least 3 second until background LED flashes Red and Blue with an audible pairing tone.

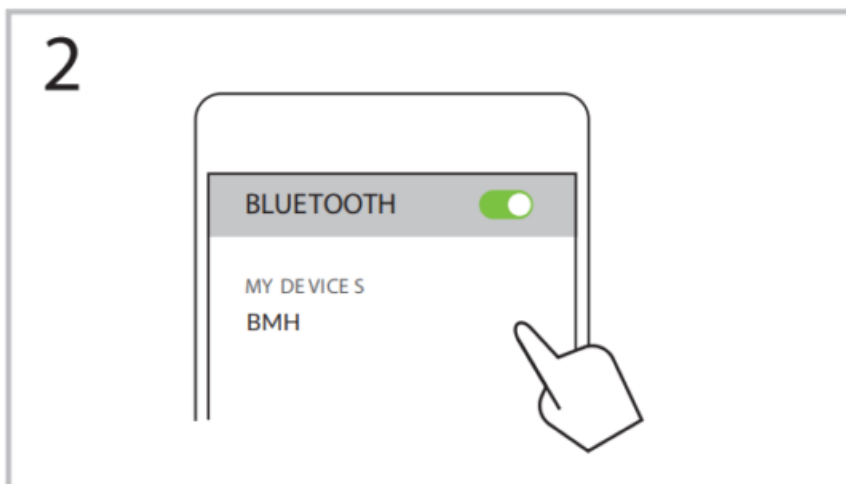


PAIR DEVICE

Find “BMH” in the list of available devices in the Bluetooth menu of the device you are pairing.

The IASUS BMH uses standard Bluetooth 5.2 protocols.

When paired with newer devices, there is no need to enter a passcode. For older Bluetooth equipped devices, enter the code “0000”.



TRANSPARENCY MODE

TURNING TRANSPARENCY MODE ON

One of the unique features of the BMH is the Transparent Mic. With the turn on the feature, the ambient sounds from your surroundings are mixed in with the audio source, enabling you to be aware of what's around you as you enjoy your amplified audio.



VOICE COMMAND

VOICE COMMAND



VOICE ACTIVATED

Say 'Hey Siri' on iPhones* or 'Ok Google/Hey Google' on Android phones*



*Ensure that Voice Command is activated in your device's settings menu

Utilize voice commands with your phone's smart assistants (such as Siri or Google Assistant) to gain full control over volume adjustments, music skipping or backtracking, playback control (play/stop), initiating phone calls, and more.

TROUBLESHOOTING

I paired BMH to my PC and when Windows tried to automatically install the drivers for BMH, it comes back with multiple "Bluetooth Peripheral Device – No Driver Found" errors. Where can I find the drivers?	This means Windows was not able to find any Bluetooth drivers for your PC hardware. Please ensure you have your computer manufacturer's Bluetooth software suite installed and try to pair BMH again. It should automatically install all Bluetooth related functionalities of BMH upon pairing.
BMH's charging light remains red and does not turn blue.	Ensure you're using a charger with an output of 500mA or less. If problem persists, contact IASUS customer support.
BMH's volume when playing music is very low.	Make sure the speakers are positioned accurately with in your helmet. If they are not directly atop and in contact with your ears, you may experience audio loss, resulting in lower volume and dissatisfaction with the audio quality.

1-YEAR LIMITED WARRANTY

IASUS Concepts Limited warrants that the IASUS BMH sold by IASUS Concepts or its authorized agents is free from defects in materials and workmanship under normal use for one year. This warranty is only applicable to the original purchaser in possession of a dated sales document receipt that includes the name and the company from which it was purchased. This warranty is in lieu of and excludes all other warranties, expressed or implied, including any implied warranty of merchantability or fitness, and of any other obligation on the part of IASUS Concepts Limited.

WHAT THIS WARRANTY DOES NOT COVER

- Damage from improper operation, misuse, neglect such as dropping the product onto hard surfaces, contact with extreme humidity or heat, or acts of nature (lightning, floods, power surges, etc.).
- Products that may have been tested, adjusted, installed, maintained, repaired or altered in any way by persons not expressly approved by IASUS Concepts Limited.
- Cords that are stretched, burnt, torn or cut.
- Products purchased more than 12 months previous to the current date.
- Products that are not accompanied by a valid proof of purchase.

TO REGISTER FOR YOUR WARRANTY

You must register your product to receive warranty service. To do so and to view detailed information about our warranty service, please visit : <https://iasus-concepts.com/warranty/>

TO GET WARRANTY SERVICE FROM IASUS CONCEPTS

Please contact our customer service department via our website. Once you have done so, you will receive instructions on how to ship the products to IASUS Concepts or to one of our designated service centers. If instructed to ship the product, you must ship it with freight, duties and insurance prepaid. Regardless of where you are instructed to ship your product, you must include:

- A copy of your dated sales document receipt
- A fully completed Return Materials Authorization (RMA) form.
- Payment for any services or repairs not covered by the warranty. This will have been predetermined with your customer service representative.

LEGAL INFORMATION

There is no informal dispute settlement mechanism available. This warranty gives you specific legal rights, and you may also have other rights, which vary geographically. Some areas do not allow limitations on how long an implied warranty last and/or do not allow the exclusions or limitations or consequential damages. IF this is true for your area, the above limitations or exclusions may not apply to you. IASUS Concepts shall not be liable for any special or consequential damages or for loss or expense directly or indirectly arising from use of the product, inability to use the product in combination with other equipment, or from any other cause. IASUS Concepts reserves the right to make changes in the design of the product and to make additions or improvements to it without incurring any obligation to modify any products previously sold.

FCC Warning

This equipment has been tested and found to comply with the limits for a Class B digital device, pursuant to part 15 of the FCC Rules. These limits are designed to provide reasonable protection against harmful interference in a residential installation. This equipment generates, uses and can radiate radio frequency energy and, if not installed and used in accordance with the instructions, may cause harmful interference to radio communications. However, there is no guarantee that interference will not occur in a particular installation. If this equipment does cause harmful interference to radio or television reception, which can be determined by turning the equipment off and on, the user is encouraged to try to correct the interference by one or more of the following measures:

- Reorient or relocate the receiving antenna.
- Increase the separation between the equipment and receiver.
- Connect the equipment into an outlet on a circuit different from that to which the receiver is connected.
- consult the dealer or an experienced radio/TV technician for help.

Caution: Any changes or modifications to this device not explicitly approved by manufacturer could void your authority to operate this equipment.

This device complies with part 15 of the FCC Rules. Operation is subject to the following two conditions:

(1) This device may not cause harmful interference, and (2) this device must accept any interference received, including interference that may cause undesired operation.

This equipment complies with FCC radiation exposure limits set forth for an uncontrolled environment. This equipment should be installed and operated with minimum distance 0cm between the radiator and your body.

CUSTOMER SUPPORT

for latest news and products,
follow us on social media



/iasus.concepts



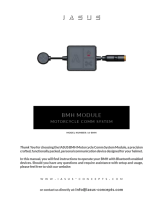
/iasusconcept



Bluetooth 5.2

Bluetooth Low Energy



	<p>IASUS IA-BMH Module Motorcycle Comm System [pdf] User Manual IA-BMH Module Motorcycle Comm System, IA-BMH, Module Motorcycle Comm System, Motorcycle Comm System, Comm System, System</p>
--	---

References

- [🌐 Loading...](#)
- [📄 Warranty - IASUS Concepts](#)
- [📖 User Manual](#)

[Manuals+](#), [Privacy Policy](#)

This website is an independent publication and is neither affiliated with nor endorsed by any of the trademark owners. The "Bluetooth®" word mark and logos are registered trademarks owned by Bluetooth SIG, Inc. The "Wi-Fi®" word mark and logos are registered trademarks owned by the Wi-Fi Alliance. Any use of these marks on this website does not imply any affiliation with or endorsement.