



# iArmor IA-N058H Running Board Side Step Installation Guide

[Home](#) » [iArmor](#) » iArmor IA-N058H Running Board Side Step Installation Guide 

## Contents

- [1 iArmor IA-N058H Running Board Side Step](#)
- [2 BEFORE INSTALLATION](#)
- [3 PART LIST](#)
- [4 Torque Value](#)
- [5 Documents / Resources](#)
  - [5.1 References](#)



## iArmor IA-N058H Running Board Side Step



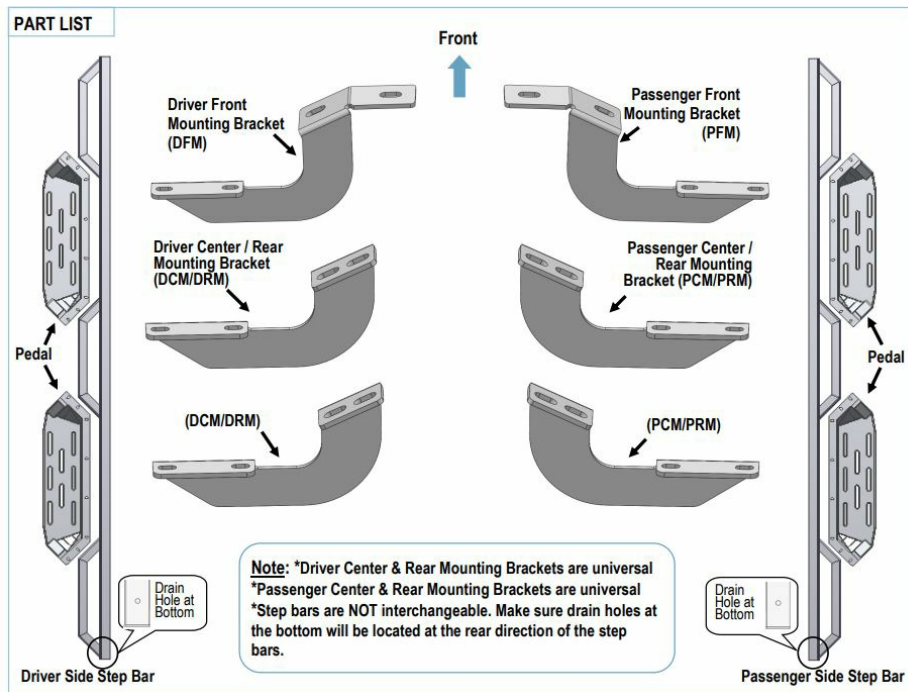
### BEFORE INSTALLATION

REMOVE CONTENTS FROM THE BOX

VERIFY ALL PARTS ARE PRESENT. READ INSTRUCTIONS CAREFULLY BEFORE STARTING INSTALLATION. ASSISTANCE IS RECOMMENDED. THANK YOU FOR CHOOSING OUR PRODUCT!

- ROCKER PANEL MOUNT
- DRILLING/TRIMMING NOT REQUIRED

## PART LIST



## Torque Value

| Fastener Size | Tightening Torque (ft-lbs) | Required |
|---------------|----------------------------|----------|
| 6mm           | 6-7                        | X        |
| 8mm           | 16-18                      | √        |
| 10mm          | 31-32                      | X        |
| 12mm          | 56-58                      | X        |
| 14mm          | 92-94                      | X        |

## Hardware Package A (For Brackets & Bars Installation)

| Hardware Package A (For Brackets & Bars Installation) |     |                       |      |     |                         |
|---|-----|-----------------------|------|-----|-------------------------|
| Item  | QTY | Description           | Item | QTY | Description             |
| 1#  | 12  | M8X1.25-30 Hex Bolts  | 4#   | 12  | M8X1.25-20 T Bolt       |
| 2#  | 24  | M8 Large Flat Washers | 5#   | 12  | M8 Plastic Washers      |
| 3#  | 12  | M8 Lock Washers       | 6#   | 12  | M8X1.25 Nylon Lock Nuts |

1#
2#
3#
4#
5#
6#

| Hardware Package B (For Step Pedals Installation) |     |                       |      |     |                 |
|---|-----|-----------------------|------|-----|-----------------|
| Item  | QTY | Description           | Item | QTY | Description     |
| 1#  | 24  | M8X1.25-25 Hex Bolts  | 3#   | 24  | M8 Lock Washers |
| 2#  | 24  | M8 Large Flat Washers |      |     |                 |

1#
2#
3#

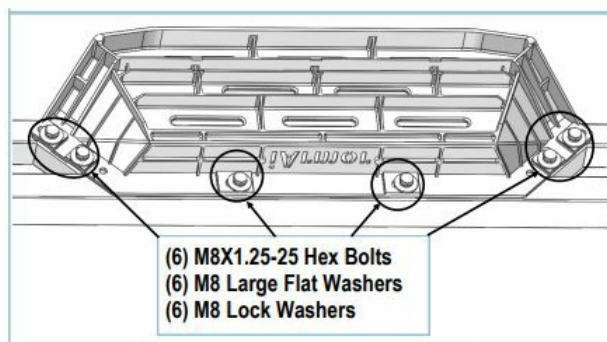
## Note

Driver Center and rear Mounting Brackets are universal Passenger Center and rear Mounting Brackets are universal Step bars are NOT interchangeable. Make sure drain holes at the bottom will be located at the rear direction of the step bars. The instructions here is for your reference only. We strongly recommend the professional installer for the best result. We are not responsible for any damage caused by the installation.

## STEP 1

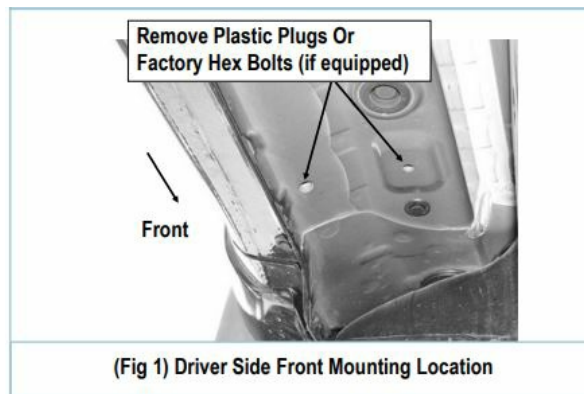
Install (4) Pedals onto the step bars with (24) M8X1.25-25mm Hex Bolts, (24) M8 Large Flat Washers and (24) M8 Lock Washers.

**IMPORTANT:** Don't punch the pedal with any metal hummer within the pedal installation, or the pedal will be damaged.



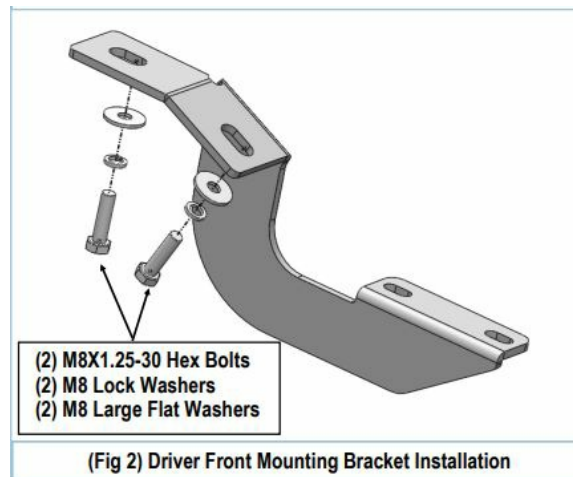
## STEP 2

Start installation on the driver-side front of the vehicle, and remove the existing (2) factory bolts, (or plastic plugs) if equipped, (Fig This will be the mounting location for the Driver's Front Mounting Bracket.



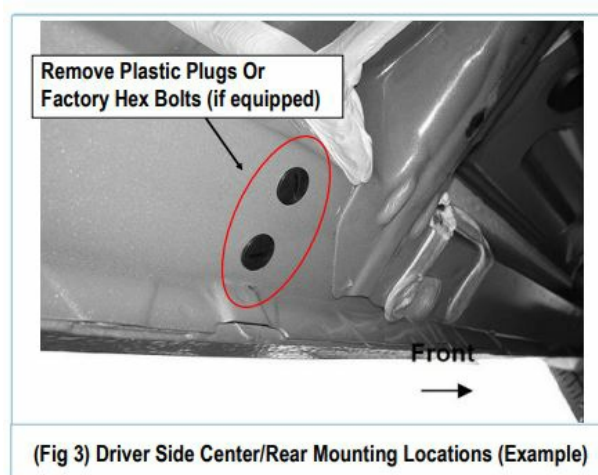
### STEP 3

Select the Driver Front Mounting Bracket (DFM). Attach the Bracket to the vehicle using the included (2) M8X1.25-30 Hex Bolts, (2) M8 Lock Washers and (2) M8 Large Flat Washers, (Fig 2). Do not fully tighten the hardware at this time.



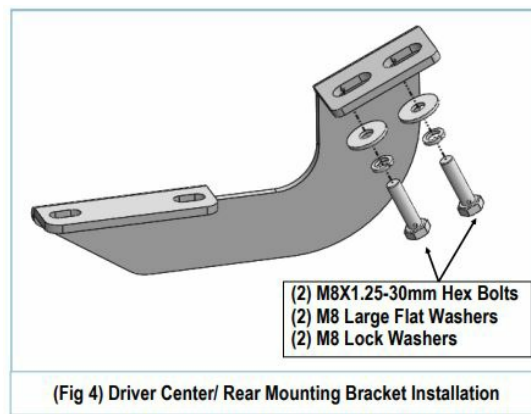
### STEP 4

Move to the Driver Side Center and Rear Mounting Locations, (Fig 3). Repeat Steps 2—3 to install the Driver Center & Rear Mounting Brackets (DCM/DRM), (Fig 4).

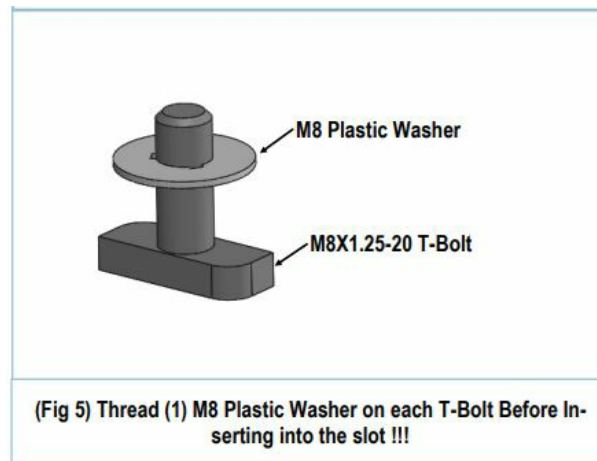


### STEP 5

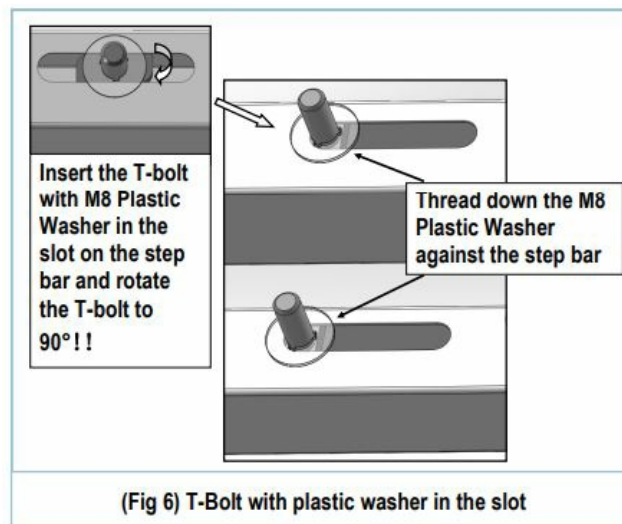
Once (3) brackets have been installed, select (6) M8X1.25- 20mm T-Bolts, and thread (1) M8 Plastic Washer on each T-Bolt, (Fig 5). Install the (6) M8X1.25-20mm T-Bolts with plastic washers in the slots on the assembled Driver side step bar. Rotate the T-Bolts to 90 degrees, and thread down the M8 Plastic Washers against the step bar (Fig 6).



**NOTE:** The Plastic Washer is designed to keep the T-Bolt in place to avoid falling into the tube during installation.



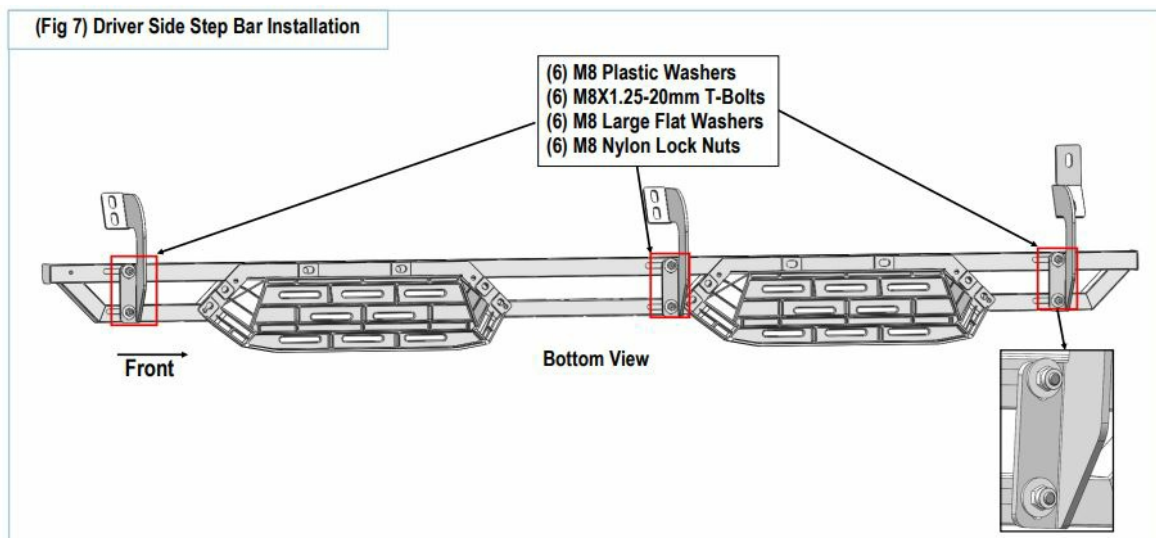
## STEP 6



Attach the Assembled Driver Side Step Bar onto the Mounting Brackets with (6) M8 Plastic Washers, (6) M8X1.25-20mm TBolts, (6) M8 Large Flat Washers, (6) M8 Nylon Lock Nuts, (Fig Do not fully tighten hardware at this time).

## STEP 7

Level and adjust the assembled Step Bar properly and tighten all hardware. Move to the other side of the vehicle. Repeat Steps 2-6 for the other side step bar installation.



### Attention

Do periodic inspections of the installation to make sure that all hardware is secure and tight. To protect your bars/boards, please use mild soap/non-abrasive products for cleaning only.

**Customer Support:** [info@iarmorauto.com](mailto:info@iarmorauto.com)

## Documents / Resources

|  |  |
|--|--|
|  | <p><a href="#">iArmor IA-N058H Running Board Side Step</a> [pdf] Installation Guide</p> <p>IA-N058H Running Board Side Step, IA-N058H, Running Board Side Step, Board Side Step, Side Step, Step</p> |
|--|--|

## References

- [User Manual](#)