



i3-TECHNOLOGIES i3SYNC Transmitter/Receiver User Guide

[Home](#) » [i3-TECHNOLOGIES](#) » i3-TECHNOLOGIES i3SYNC Transmitter/Receiver User Guide



i3-TECHNOLOGIES

i3SYNC TRANSMITTER
Quick start guide



Contents [[hide](#)]

- 1 Let's see what's in the box.
- 2 Description of functions.
- 3 USB-C Transmitter
- 4 Description of functions.
- 5 LED-light.
- 6 How to install.
- 7 How to use.
- 8 How to pair.
- 9 Important warranty information.
- 10 Documents / Resources
- 11 Related Posts

Let's see what's in the box.

i3-Technologies is conscious of the environmental impact of the products that we produce. Therefore we would like you to support us in this mission by disposing of all packaging according to any local regulations. To check if we packed your product correctly, please verify if all these items are present:

<input checked="" type="checkbox"/> 1x I3SYNC Transmitter	<input checked="" type="checkbox"/> 1x User guide
---	---

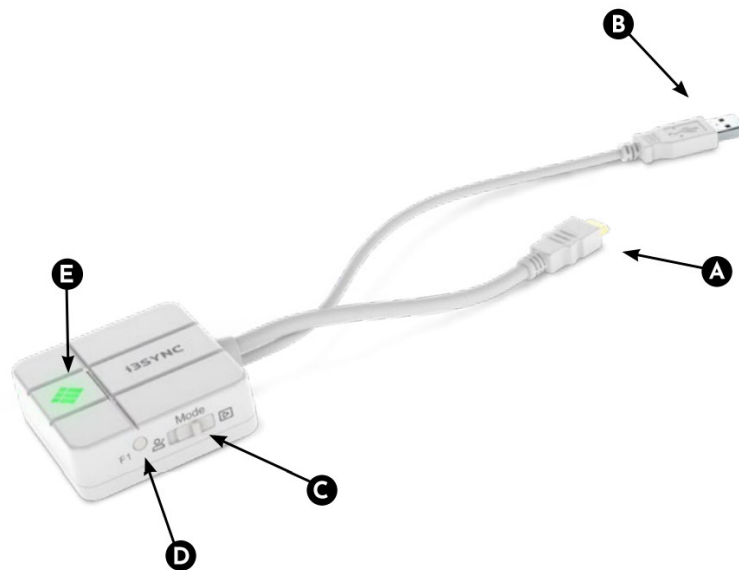
Is something missing or does it look damaged?

We're so sorry, please contact our support service at service@i3-technologies.com, or contact your local reseller.

Description of functions.

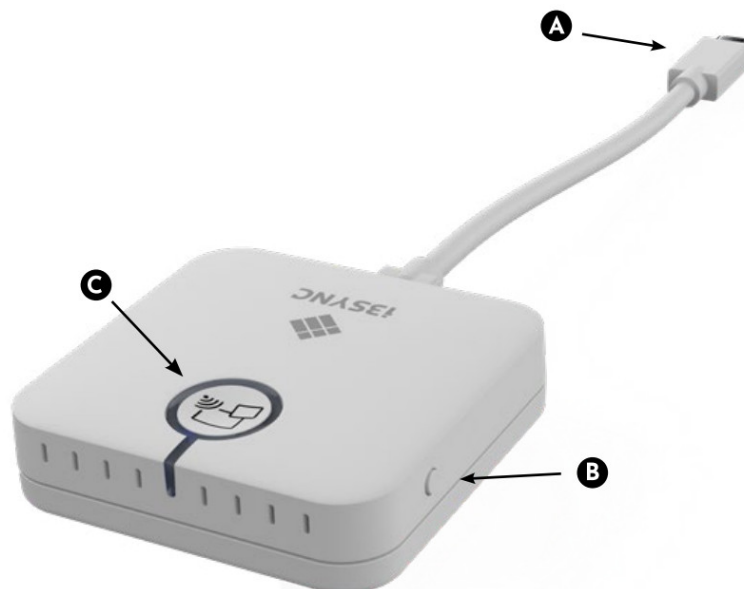
What does every button do when I push it.

HMDI-USB Transmitter



- A HDMI
- B USB
- C Mode Switch: switch presentation mode/Video mode
- D F1 button: a snapshot in presentation mode/video mode
- E Main button: pairing/start mirroring/stop mirroring

USB-C Transmitter

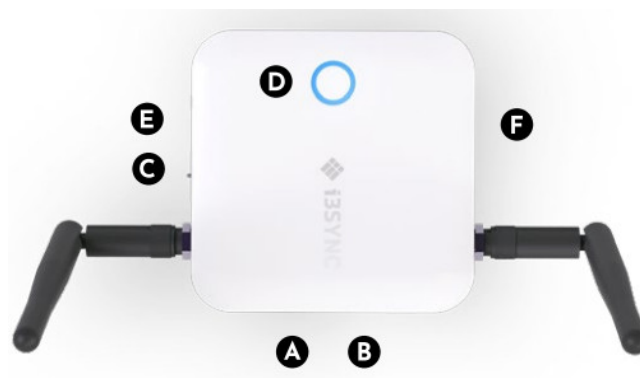


- A USB-C
- B F1 button: Hold down to reboot the device.
- C Main button: pairing/start mirroring/stop mirroring

Description of functions.

What does every button do when I push it.

Receiver



- A HDMI OUT
- B Micro USB
- C Slide Switch: overwrite on/off
- D Main button: for pairing with transmitter
- E F1 button: for firmware update
- F Micro SD Card slot: for firmware update

LED-light.

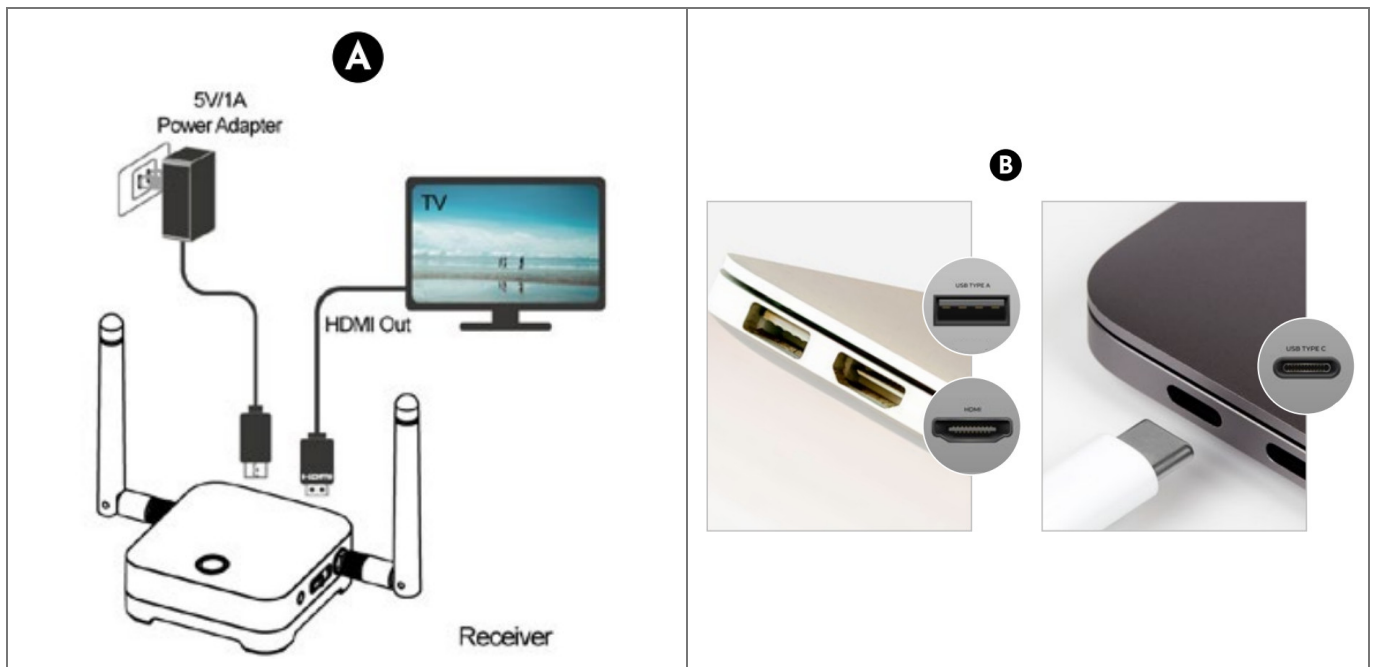
What do all the LED colors mean?



Status	Color	LED Action
Standby	Red	Lights up constantly
Pairing	Green	Blink
Paired and Ready	Green	Lights up constantly
Mirroring	Blue	Lights up constantly
Error	Red	Blink
FW update	White	Blink

How to install.

How to connect your i3SYNC TRANSMITTER and start working with it.



A Receiver

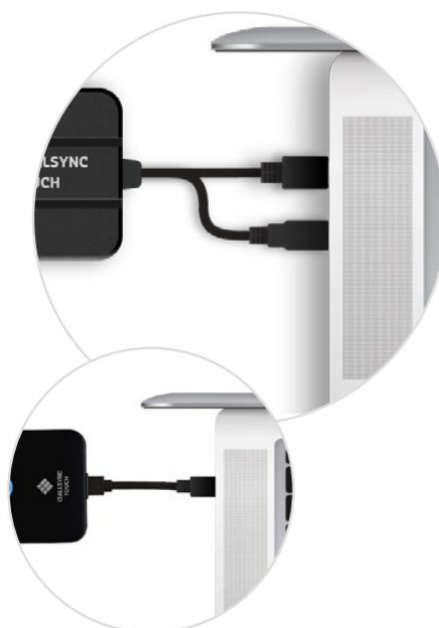
1. Connect an HDMI cable from a display to the HDMI OUT port of the Receiver.
2. Connect the micro USB cable for the power supply.
3. The device will automatically start up after inserting the Power Supply.

B Transmitter

1. Connect the USB-C / HDMI & USB cable into your laptop or another device.

How to use.

First-time usage



1. Connect the i3SYNC receiver to your display.

2. Connect the i3SYNC transmitter to your laptop.
3. Wait for a constant green light of the main button from the transmitter.
4. Press the main button to mirror, the main button will change into blue.

How to pair.



When using the i3SYNC Transmitter for the first time:

1. Press the main button of the receiver and transmitter simultaneously.
2. The transmitter and receiver are blinking green during the pairing process.
3. When the pairing is successful, the receiver and transmitter will have a constant green light.

Important warranty information.

Our i3TOUCH EX devices are equipped by default with a 5-year warranty. If you however have acquired the interactive display for educational purposes, this warranty can be extended.

WARRANTY EXTENSION FOR SCHOOLS

You can register your product for an extended warranty if you are an educational institution.

If you are a corporate institution, please contact your reseller.

Please note that the warranty extension must be registered within 30 days after delivery of the i3 product through the form found on this page:



<http://i3-technologies.com/en/get-support/warranty/>

Thank you.

Enjoy the purchase of your i3SYNC TRANSMITTER.

Documents / Resources



[i3-TECHNOLOGIES i3SYNC Transmitter/Receiver](#) [pdf] User Guide

i3SYNC, Transmitter Receiver