



# i3 INTERNATIONAL UIO8 v2 Universal Input Output Device User Manual

[Home](#) » [i3 INTERNATIONAL](#) » i3 INTERNATIONAL UIO8 v2 Universal Input Output Device User Manual 



Universal InputOutput Device  
UIO8 v2



## Contents

- [1 UIO8 v2 Universal Input Output Device](#)
- [2 Precautions](#)
- [3 Default Connection Information](#)
- [4 Changing IP Address in ACT](#)
- [5 Wiring Diagram](#)
- [6 LED Status](#)
- [7 Adding UIO8v2 device to SRX-Pro](#)
- [8 Turning UIO8v2 Controls ON/OFF in Video Pilot Client \(VPC\)](#)
- [9 Troubleshooting](#)
- [10 Documents / Resources](#)
  - [10.1 References](#)
- [11 Related Posts](#)

## UIO8 v2 Universal Input Output Device

Thank you for purchasing an i3 UIO8v2 LAN Inputs and Output Peripheral Device. UIO8v2 has been designed to support two different functions: a single-reader card access controller board or a universal I/O controller with 4 inputs & 4 outputs.

When used as an I/O Controller device, i3's UIO8v2 may be integrated with the i3's SRX-Pro DVR/NVR system via LAN. SRX-Pro Server will detect and connect to all UIO8v2 devices connected to Local Area Network. Each UIO8 device supports 4 inputs and 4 outputs and can control PTZ cameras through the TCP/IP (network). SRX-Pro Server can connect to a total of 16 individual UIO8v2 devices supporting up to a maximum of 64 inputs and 64 outputs.

UIO8v2 can be powered with a 24VAC power source or via PoE Switch on the network. UIO8v2 device, in turn, offers a 12VDC output, to power other connected devices such as strobe light, buzzer, alarm etc., making for a more convenient and cost-efficient installation. UIO8v2 may also be integrated with i3's CMS sensor input, which adds further reporting and monitoring capabilities to i3 International's CMS Site Info module and Alert Centre application.

If the system needs to be modified or repaired, contact a certified i3 International Dealer/Installer. When serviced by unauthorized technician, the system warranty will be voided. Should you have any problems or questions regarding our products, contact your local Dealer/Installer.

## Precautions

Installation and serving should be performed only by qualified and experienced technicians to conform to all local codes and to maintain your warranty.

When installing your UIO8v2 device be sure to avoid:

- excessive heat, such as direct sunlight or heating appliances
- contaminants such as dust and smoke
- strong magnetic fields
- sources of powerful electromagnetic radiation such as radios or TV transmitters
- moisture and humidity

## Default Connection Information

Default IP Address	192.168.0.8
Default subnet mask	255.255.255.0
Control Port	230
HTTP Port	80
Default Login	i3admin
Default Password	i3admin

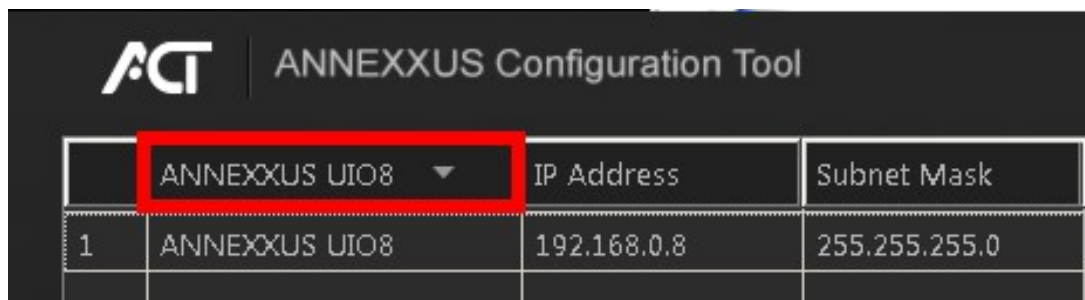
## Changing IP Address in ACT

UIO8v2 devices cannot share an IP address, each UIO8v2 requires its own unique IP address.

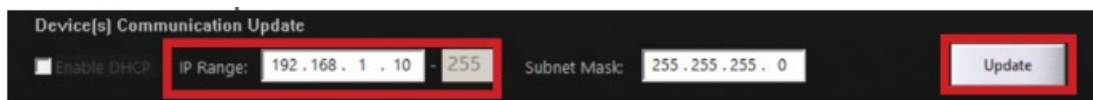
1. Connect your UIO8v2 device to the Gigabit switch.
2. On your i3 NVR, launch i3 Annexes Configuration Tool (ACT) v.1.9.2.8 or higher.

Download and install the latest ACT installation package from i3 website:

<https://i3international.com/download>



3. Select “ANNEXUS UIO8” in the model drop-down menu to show only the UIO8v2 devices in the list.
4. Enter the new IP address and Subnet Mask of the UIO8v2 in the Device(s) Communication Update area.

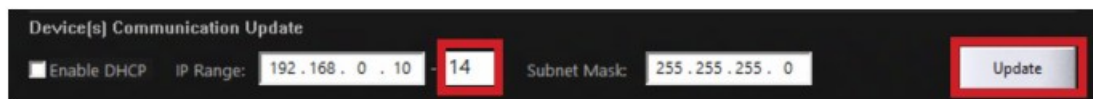


5. Click Update and then Yes in the confirmation window.

**Tip:** New IP address must match the IP range of LAN or NVR's NIC1.

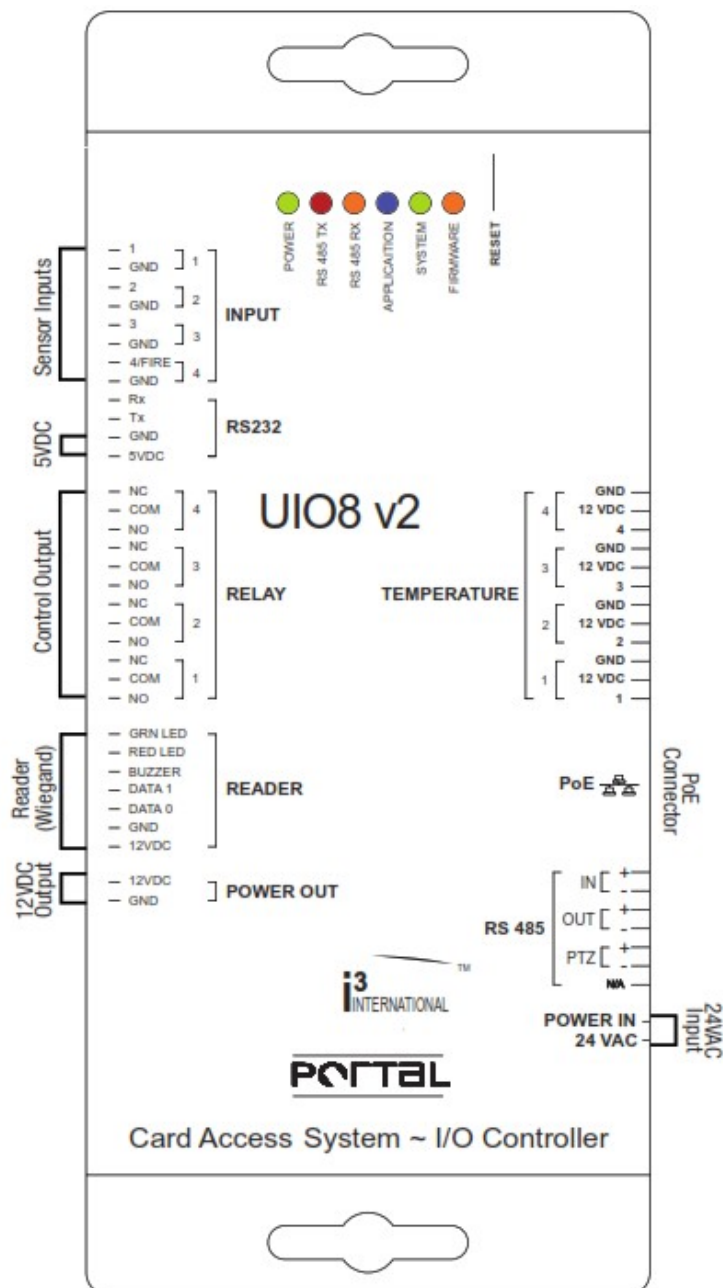
6. Wait a few moments for a “Success” message in the Result field.

Repeat Steps 1-5 for all detected UIO8v2 devices OR **Success**



7. Assign IP range to multiple devices by selecting two or more UIO8v2 in ACT, then entering the starting IP address and the final IP octet for your IP range. Click Update and then Yes in the confirmation window. Wait until “Success” message is shown for all selected UIO8.

## Wiring Diagram



## LED Status

- **POWER (Green LED):** indicates power connection to UIO8v2 device.
- **RS485 TX-RX:** indicates signal transmission to and from connected devices.
- **Portal / IO (Blue LED):** indicates current function of the UIO8v2 device.  
LED ON – Portal Card Access; LED OFF – IO Control
- **SYSTEM (Green LED):** blinking LED indicates the health of the UIO8v2 device.
- **FIRMWARE (Orange LED):** blinking LED indicates firmware upgrade in progress.

Scan this QR code or visit [ftp.i3international.com](http://ftp.i3international.com) for a complete range of i3 product quick guides and manuals.

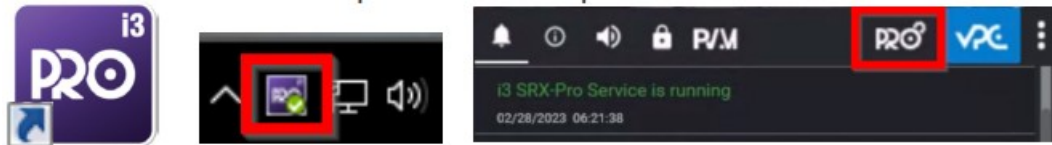


Contact our Technical Support team at: 1.877.877.7241 or [support@i3international.com](mailto:support@i3international.com) if you have any

questions or concerns regarding device installation or if you require software services or support.

## Adding UIO8v2 device to SRX-Pro

1. Launch the i3 SRX-Pro Setup from the Desktop or from the SRX-Pro Monitor.



2. In the IE browser, click Continue to this website.



**Tip:** default administrative login is i3admin.



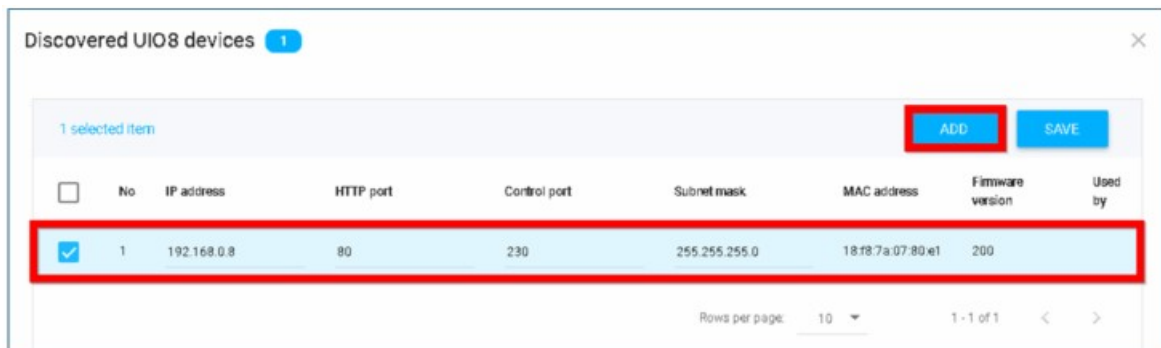
4. Click on the Server tile > I/O devices > Controls (0) or Sensors (0) tab

5. Click SEARCH UIO8 [SEARCH UIO8](#)

All UIO8v2 devices on the network will be detected and displayed.

6. Select the desired UIO8v2 device(s) and click ADD. [ADD](#)

In this example, UIO8v2 device with the IP Address 192.168.0.8 has been selected.



7. Four (4) Control Outputs and four (4) Sensor Inputs from each selected UIO8v2 device will be added to I/O devices tab.

8. Configure settings for connected controls and sensors and click Save [SAVE](#).

Controls

REFRESH

SAVE

MANUALLY ADD

SEARCH UID8

No.	<input checked="" type="checkbox"/>	Control	Begin time	End time	Duration (hh:mm:ss)	Status
^	<input checked="" type="checkbox"/>	UID8:192.168.0.8				
1	<input checked="" type="checkbox"/>	Control 1	12:00:00 AM	12:00:00 AM	00:00:05	<input type="checkbox"/>
2	<input checked="" type="checkbox"/>	Control 2	12:00:00 AM	12:00:00 AM	00:00:05	<input type="checkbox"/>
3	<input checked="" type="checkbox"/>	Control 3	12:00:00 AM	12:00:00 AM	00:00:05	<input type="checkbox"/>
4	<input checked="" type="checkbox"/>	Control 4	12:00:00 AM	12:00:00 AM	00:00:05	<input type="checkbox"/>

Sensors

REFRESH

SAVE

COLUMNS

MANUALLY ADD

SEARCH

No.	<input checked="" type="checkbox"/>	Sensor	Linked cameras	Linked controls	NC/NO	Status
^	<input checked="" type="checkbox"/>	UID8:192.168.0.8				Enable Velocity Timer <input type="checkbox"/>
1	<input checked="" type="checkbox"/>	Sensor 1		Control 1 (UID8:192.168...	NO	OFF
2	<input checked="" type="checkbox"/>	Sensor 2		Control 2 (UID8:192.168...	NO	OFF
3	<input checked="" type="checkbox"/>	Sensor 3		Control 3 (UID8:192.168...	NO	OFF
4	<input checked="" type="checkbox"/>	Sensor 4		Control 4 (UID8:192.168...	NO	OFF



<https://www.youtube.com/channel/UCqcWka-rZR-CLpil84UxXnA/playlists>

## Turning UIO8v2 Controls ON/OFF in Video Pilot Client (VPC)

To turn the Control outputs ON/OFF remotely, launch Video Pilot Client software. Connect to the localhost server if running VPC on the same NVR.

Otherwise, add new server connection and click Connect.

In LIVE mode, hover the mouse over the bottom of the screen to reveal the Sensor/Control menu panel.

Turn individual controls ON and OFF by clicking on the corresponding control button.

Hover over the Control button to see the Control custom name.



## Troubleshooting

### Q: Some UIO8v2 devices cannot be found in SRX-Pro.

A: Make sure each UIO8v2 device has a unique IP address. Use Annexes Configuration Tool (ACT) to change IP address for all UIO8v2 devices.

### Q: Unable to add UIO8 to SRX-Pro.

A: UIO8v2 device can be used by a single application/service at-a-time.

Example: If i3Ai Server is using UIO8v2 device, then SRX-Pro running on the same NVR will not be able to add the same UIO8v2 device. Remove the UIO8v2 from the other application before adding to SRX-Pro.

In SRX-Pro v7, UIO8v2 devices already in use by another application/service will be grayed out. The IP of the device running the application currently using the specific UIO8v2 device will be visible in Used by column.

In this example, UIO8v2 with the IP address 192.0.0.108 is grayed out and cannot be added as it's currently in use by the application running on the device with the IP address 192.0.0.252.

Discovered UIO8 devices 2

1 selected item ADD SAVE

	No	IP address	HTTP port	Control port	Subnet mask	MAC address	Firmware version	Used by
<input checked="" type="checkbox"/>	1	10.1.5.29	80	230	255.255.255	18:f8:7a:13:fe:1f	239	
<input type="checkbox"/>	2	192.0.0.108	80	230	255.0.0.0	18:f8:7a:02:73:b3	233	192.0.0.252

Rows per page: 10 1 - 2 of 2 < >



## REGULATORY NOTICES (FCC CLASS A)

This device complies with Part 15 of the FCC Rules. Operation is subject to the following two conditions: (1) this device may not cause harmful interference, and (2) this device must accept any interference received, including interference that may cause undesired operation.

## RADIO AND TELEVISION INTERFERENCE

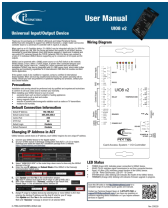
This equipment has been tested and found to comply with the limits of a Class A digital device, pursuant to Part 15 of the FCC rules. These limits are designed to provide reasonable protection against harmful interference when the equipment is operated in a commercial environment. This equipment generates, uses, and can radiate radio frequency energy and, if not installed and used in accordance with the instruction manual, may cause harmful interference to radio communications.

Operation of this equipment in a residential area is likely to cause harmful interference in which case the user will be required to correct the interference at his own expense.

This Class A digital apparatus complies with Canadian ICES-003.

**i3 INTERNATIONAL INC.**  
Tel: 1.866.840.0004  
[www.i3international.com](http://www.i3international.com)

## Documents / Resources

	<p><a href="#">i3 INTERNATIONAL UIO8 v2 Universal Input Output Device</a> [pdf] User Manual UIO8 v2, UIO8 v2 Universal Input Output Device, Universal Input Output Device, Input Output Device, Output Device</p>
---	---

## References

- [i3 International FTP Login Page](#)
- [Ai Smart Video & Cloud Solutions | i3 International](#)
- [Download - i3 International](#)

Manuals+.