



i-SYST UDG-NRF52840 USB Dongle with Nordic nRF Connect for Desktop User Guide

[Home](#) » [i-SYST](#) » i-SYST UDG-NRF52840 USB Dongle with Nordic nRF Connect for Desktop User Guide 



MANUAL GUIDE
USB Dongle with Nordic
nRFconnect for Desktop
for BLE
Version 1.0

Contents

- [1 Revision history](#)
- [2 Introduction](#)
- [3 USB Dongle with Nordic nRFConnect](#)
- [4 Documents / Resources](#)
 - [4.1 References](#)
- [5 Related Posts](#)

Revision history

Version	Date	Note	Contributor(s)	Approver
1.0	12 May 2021	Initial version	Nguyen Hoang Hoan	Nguyen Hoang Hoan

Copyright © 2019 I-SYST, all rights reserved.

3514, 1re Rue, Saint-Hubert, QC., Canada J3Y 8Y5

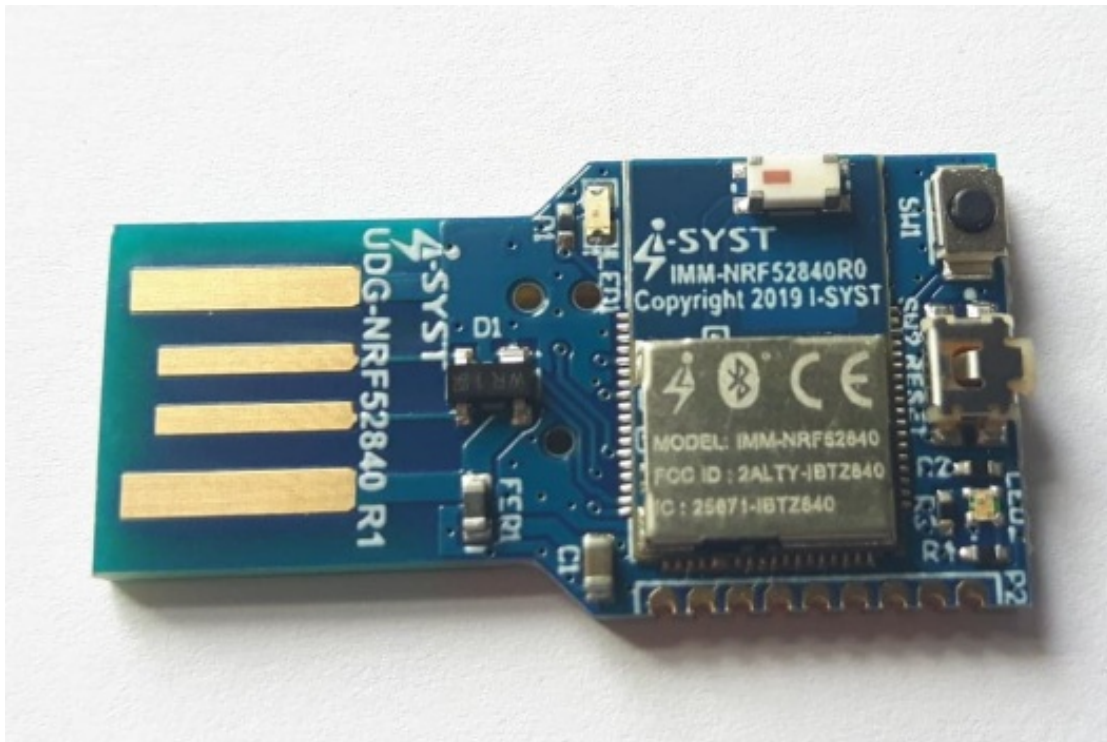
This document may not be reproduced in any form without, express written consent from I-SYST.

Introduction

This document shows step-by-step how to use a USB Dongle with Nordic nRF Connect for desktop as a sniffer for Bluetooth Low Energy (BLE).

USB Dongle with Nordic nRFConnect

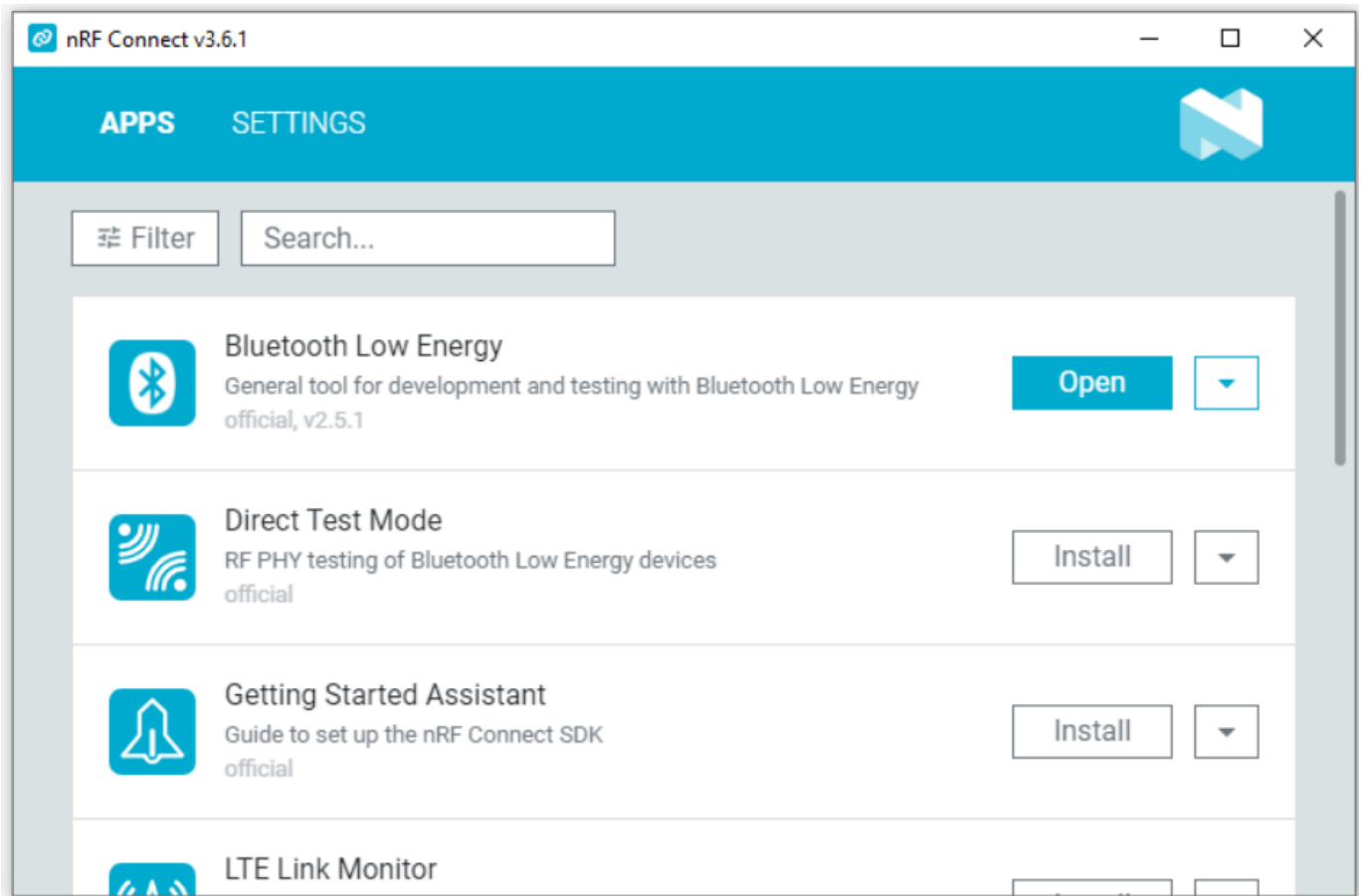
Plug in UDG-NRF52840 to your computer



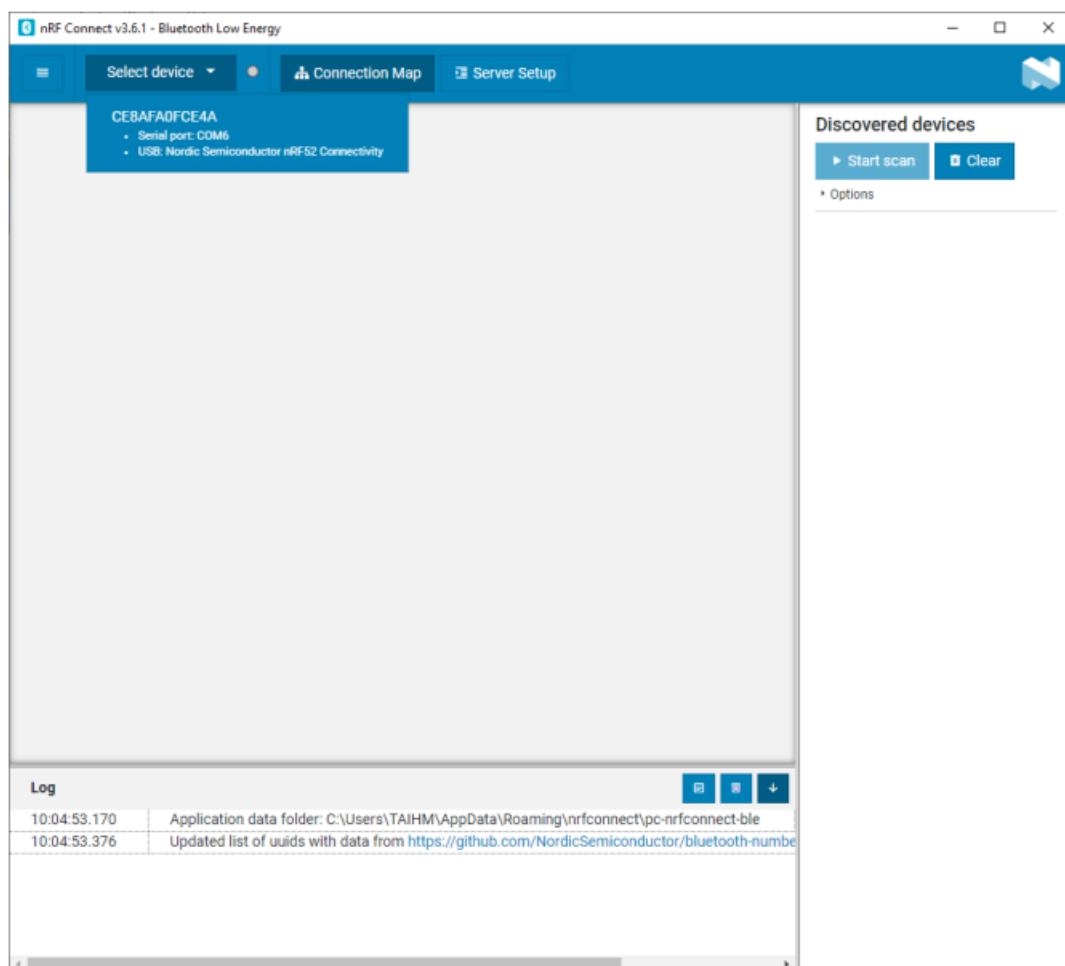
Download Nordic nRF Connect for the desktop at

<https://www.nordicsemi.com/Software-and-Tools/Development-Tools/nRF-Connect-for-desktop>

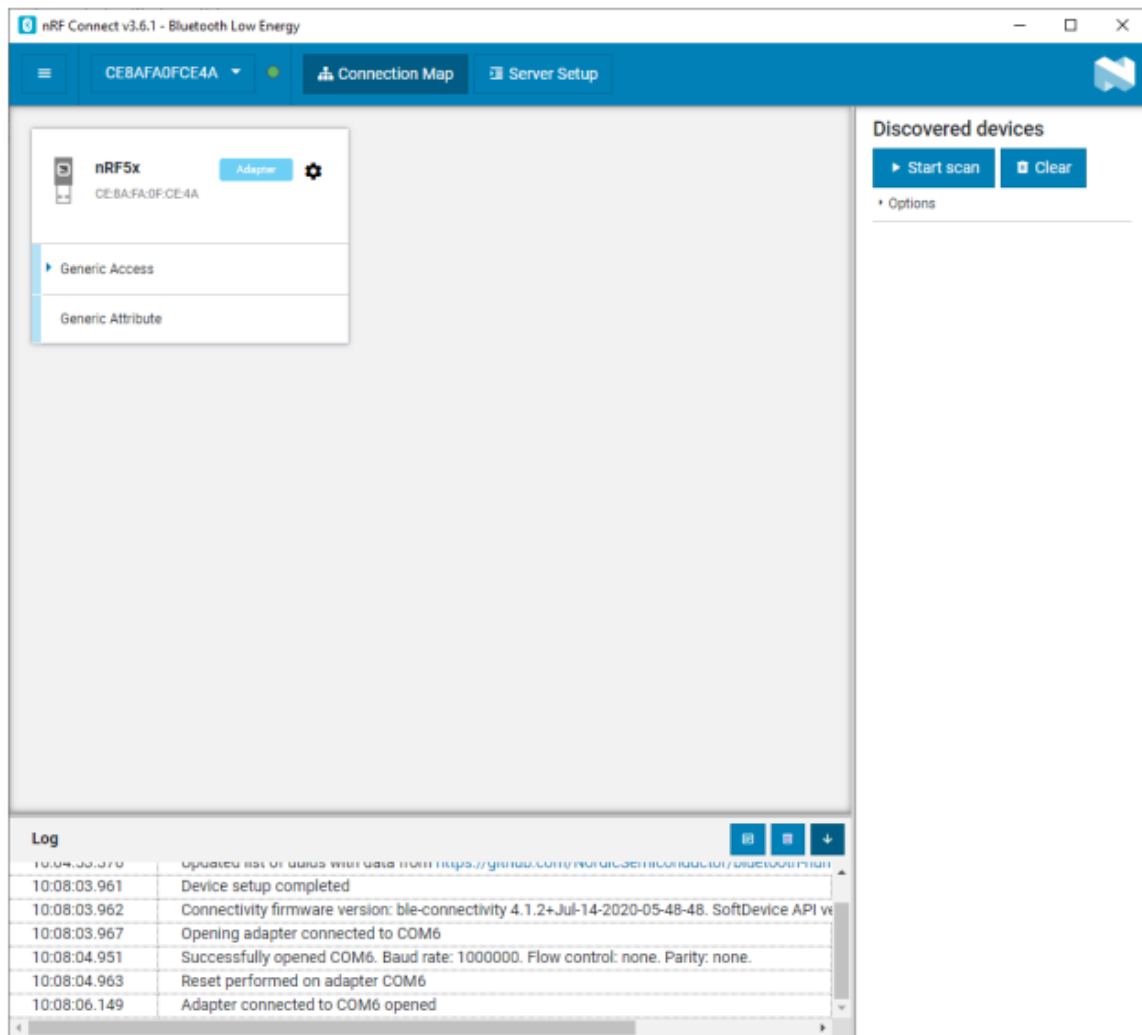
Install Nordic nRF Connect for desktop



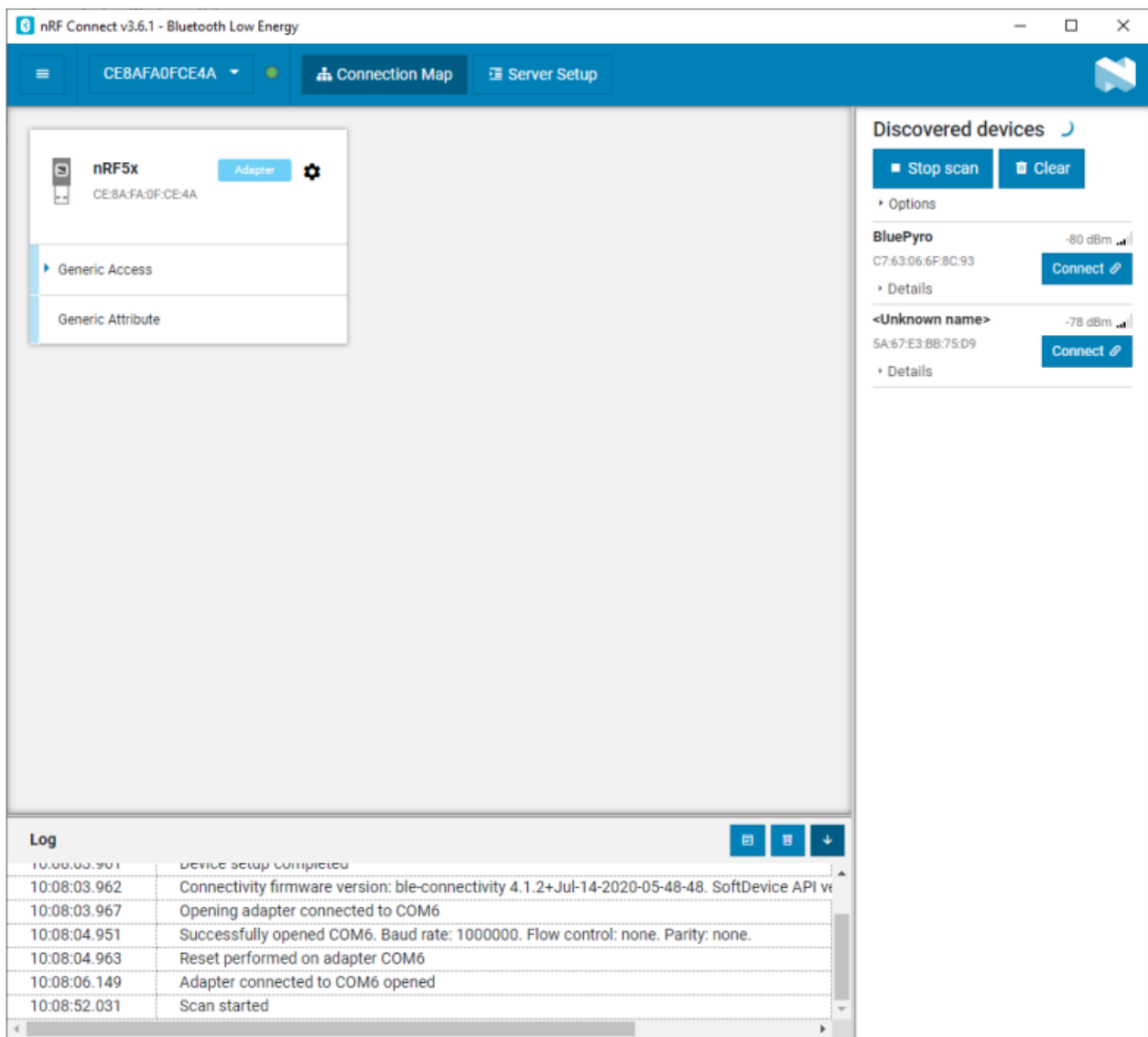
Install Bluetooth Low Energy in nRF Connect. Click Open Bluetooth Low Energy.



Click Select device: select your USB Dongle



Start scan BLE devices

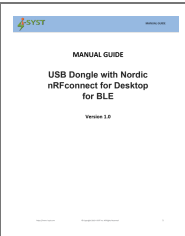


You can see BLE device in the list on the right-hand side.

<https://www.i-syst.com>

© Copyright 2019 I-SYST inc. All Rights Reserved

Documents / Resources

	<p>i-SYST UDG-NRF52840 USB Dongle with Nordic nRF Connect for Desktop [pdf] User Guide</p> <p>UDG-NRF52840, USB Dongle with Nordic nRF Connect for Desktop</p>
---	--

References

- [Home | I-SYST's Site](#)
- [nRF Connect for Desktop - nordicsemi.com](#)