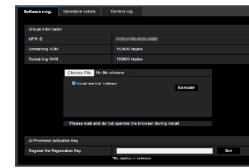


i-PRO WV-XAE207W AI Occupancy Detection Extension Software



i-PRO WV-XAE207W AI Occupancy Detection Extension Software Instruction Manual

[Home](#) » [i-PRO](#) » i-PRO WV-XAE207W AI Occupancy Detection Extension Software Instruction Manual 

Contents

- 1 i-PRO WV-XAE207W AI Occupancy Detection Extension Software
- 2 Product Information
- 3 Product Usage Instructions
- 4 Introduction
- 5 Features
- 6 Specifications
- 7 About the Operating Instructions
- 8 Disclaimer of warranty
- 9 Before using this product
- 10 Operation flow
- 11 About the detection frame
- 12 Open Source Software
- 13 Documents / Resources
 - 13.1 References
- 14 Related Posts



i-PRO WV-XAE207W AI Occupancy Detection Extension Software

Software mng.
Operation sched.
Control log

Unique information

MPR ID	8718-8718-4E7D-2A88
Remaining ROM	153600 kbytes
Remaining RAM	153600 kbytes

Choose File
No file chosen

☒ Install new Ext. software

Execute

Please wait and do not operate the browser during install.

AI Processor Activation Key

Register the Registration Key

Set

*No dashes in between.

Product Information

Specifications

- **Occupancy detection method:** To detect if the set number of people is exceeded continuously in the target area during the set period.
- **Detectable** angle of view
- **Maximum count of people:** 40
- **Number of settable areas:** Up to 4
- **Number of people detected:** 1-40 people/area
- **Detection time:** 1-600 sec/area
- **HTTP Connection** Settings: 4 transmission destinations; transmission interval: 1/5/10/15/30/60 sec; SSL supported
- **Installation location:** Indoors (Including the under-eave area not exposed to direct sunlight)
- **Illuminance:** 50 lux or above (around the subject)

Product Usage Instructions

Installation

1. Ensure the camera is installed in an indoor location with an illuminance of 50 lux or above.
2. Download the Extension Software WV-XAE207W from the provided link.
3. Install the software on the camera and register the Registration key.

Configuration

1. Access the camera settings and configure the AI Occupancy Detection function based on your requirements.
2. Set the number of people to be detected, detection time, and other parameters as needed.

Operation

1. Once configured, the software will detect occupancy by analyzing the camera feed.
2. Alarms can be sent to external systems such as WV-ASM300/WV-ASM300W and WJ-NX series network recorders.

FAQ

Q: Can this software detect occupancy accurately in low-light conditions?

A: The software requires an illuminance of 50 lux or above for accurate occupancy detection.

Q: How many people can be detected in each settable area?

A: The software can detect between 1-40 people per area.

Q: What is the maximum count of people that can be detected by the software?

A: The software can detect a maximum of 40 people in total.

Before attempting to connect or operate this software, please read these instructions carefully and save this manual for future use.

The model number is abbreviated in some descriptions in this manual.

Introduction

Preface

- The Extension Software WV-XAE207W (hereafter referred to as this product) is software for more conveniently using the network camera (option, hereafter referred to as the camera).
- By installing this product on the camera and registering the Registration key, Based on the setting conditions of the AI Occupancy Detection function, alarms can be notified to external systems such as WV-ASM300/WV-ASM300W (option) and WJ-NX series network recorders (option).

Important

- This product is necessary for each camera.
- See the URL below for information such as the models supported by this product, the software version, etc.

<https://i-pro.com/global/en/surveillance/training-support/support/technical-information>

Features

- This product can be integrated additionally into an existing i-PRO surveillance system.
 - (Only network cameras and this product are to be added.)
 - This product notifies the specified notification destination of alarms when the set conditions are reached.
 - This product sends information about the number of people detected periodically to the specified transmission destination.
 - This product has the following features.
1. The deep learning technology and our proprietary image processing technology can detect occupancy by detecting people.
 2. You can detect occupancy with the camera alone just by installing this product on the camera.

Specifications

- **Occupancy detection method** To detect if the set number of people is exceeded continuously in the target area during the set period.
- **Detectable angle of view** Depression angle 45° or less
- **Maximum count of people** 40
- **Number of settable areas** Up to 4
- **Number of people detected** 1-40 people/area
- **Detection time** 1-600 sec/area
- **HTTP Connection Settings** 4 transmission destinations; transmission interval: 1/5/10/15/30/60 sec; SSL supported
- **Installation location** Indoors (Including the under-eave area not exposed to direct sunlight)
- **Illuminance** 50 lux or above (around the subject)
- See the URL below for “Body size” information.
- <https://i-pro.com/global/en/surveillance/training-support/support/technical-information> <Control No.: C0320>

About the Operating Instructions

- This manual explains the method of installing this product in a camera, settings that need to be made before starting to operate this product, and the method of operation for using this product. Since this product is used after being installed on a camera, before using this product always be sure to also read the Operating Instructions of the camera with which this product is to be used.
- Based on the specific model of a camera that is used, its screen may be different from the screen shown in this manual.
- In this manual, a personal computer is referred to as a PC.
- In this manual, WV-ASM300 and WV-ASM300W are referred to as WV-ASM300.

System requirements for a PC

- For the requirements of the PC which are used for settings refer to the Operating Instructions of a camera.

Trademarks and registered trademarks

- Internet Explorer and Microsoft Edge are either registered trademarks or trademarks of Microsoft Corporation in the
- United States and/or other countries.
- Microsoft product screenshot (s) reprinted with permission from Microsoft Corporation.
- Google Chrome are trademark of Google LLC.
- Mozilla and Firefox are trademarks of the Mozilla Foundation in the US and other countries.
- ONVIF is a trademark of ONVIF Inc.

On open-source software used

This product uses the open-source software below.

Name of software	Name of license
WebSocket	The MIT License
libjpeg-turbo	<ul style="list-style-type: none"> • The IJG (Independent JPEG Group) License • The Modified (3-clause) BSD License • The zlib License

- For the corresponding license statement, see “Open Source Software.

Copyright

- Distributing, copying, disassembling, reverse compiling, and reverse engineering the software provided with this product are all expressly prohibited. In addition, exporting any software provided with this product violating export laws is prohibited.

Disclaimer of warranty

IN NO EVENT SHALL i-PRO Co., Ltd. BE LIABLE TO ANY PARTY OR ANY PERSON, EXCEPT FOR REPLACEMENT OR REASONABLE MAINTENANCE OF THE PRODUCT, FOR THE CASES INCLUDING BUT NOT LIMITED TO BELOW:

1. ANY LOSS OR DAMAGE, INCLUDING WITHOUT LIMITATION, DIRECT OR INDIRECT, SPECIAL, CONSEQUENTIAL OR EXEMPLARY, ARISING OUT OF OR RELATING TO THE PRODUCT;
2. INCONVENIENCE OR ANY LOSS ARISING WHEN IMAGES ARE NOT DISPLAYED, DUE TO ANY REASON OR CAUSE INCLUDING ANY FAILURE OR PROBLEM OF THE PRODUCT;
3. ANY PROBLEM, CONSEQUENTIAL INCONVENIENCE, OR LOSS OR DAMAGE, ARISING OUT OF THE SYSTEM COMBINED WITH THIRD-PARTY DEVICES;
4. ANY CLAIM OR ACTION FOR DAMAGES BROUGHT BY ANY PERSON OR ORGANIZATION AS A PHOTOGRAPHED SUBJECT DUE TO VIOLATION OF PRIVACY CONCERNING A SURVEILLANCE CAMERA'S PICTURE OR SAVED DATA, FOR SOME REASON (INCLUDING USE WHEN USER

AUTHENTICATION ON THE AUTHENTICATION SETTING SCREEN IS SET TO OFF), BECOMING PUBLIC OR BEING USED FOR ANY PURPOSE; (5) LOSS OF REGISTERED DATA CAUSED BY ANY FAILURE (INCLUDING INITIALIZATION OF THE PRODUCT DUE TO FORGOTTEN AUTHENTICATION INFORMATION SUCH AS A USER NAME AND PASSWORD).

Limitation of liability

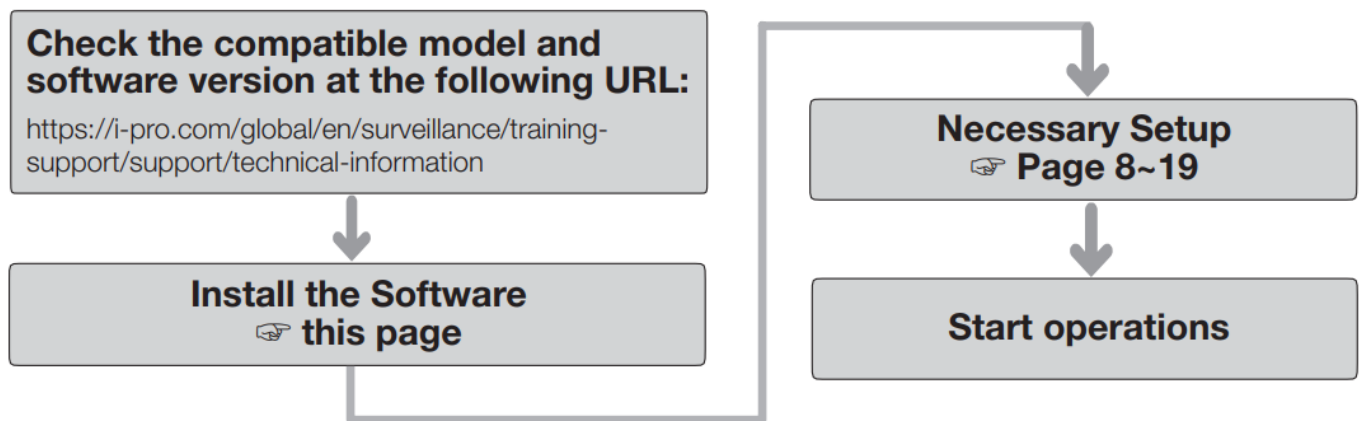
- THIS PUBLICATION IS PROVIDED “AS IS” WITHOUT WARRANTY OF ANY KIND, EITHER EXPRESS OR IMPLIED, INCLUDING BUT NOT LIMITED TO, THE IMPLIED WARRANTIES OF MERCHANTABILITY, FITNESS FOR ANY PARTICULAR PURPOSE, OR NON-INFRINGEMENT OF THE THIRD PARTY’S RIGHT.
- THIS PUBLICATION COULD INCLUDE TECHNICAL INACCURACIES OR TYPOGRAPHICAL ERRORS.
- CHANGES ARE ADDED TO THE INFORMATION HEREIN, AT ANY TIME, FOR THE IMPROVEMENTS OF THIS PUBLICATION AND/OR THE CORRESPONDING PRODUCT(S).

Before using this product

- Occupancy may not be detected correctly in the following cases since it may be difficult to detect a person, or false detection may occur.
- The person is out of focus.
- The person is shaking.
- The person is overexposed or washed out.
- Only 2/3 or less of the part above a person’s shoulders is shown.
- The camera imaging angle is at a depression angle of 45° or above.
- Only a part of the person is shown in the privacy zone set from the “Setup” menu > “Image/Audio” > “Image quality” on the camera.
- The person is too close to the camera.
- The person is too small (size less than the specified shoulder width).
- It may detect dolls and posters.
- It may not be possible to correctly detect a person lying down or falling.
- Other cautions are explained below.
- If the number of people shown in the camera exceeds 40, correct occupancy detection will not be possible since some of the people cannot be detected.
- AI Occupancy Detection Application supports “0° (Off)” and “180° (vertical rotation)” under “Image rotation” settings.
- Depending on the camera you are using, the transmission frame rate may be limited when using the AI Occupancy Detection application. Refer to the URL below for details.
- <https://i-pro.com/global/en/surveillance/training-support/support/technical-information> <Control No.: C0103>
- When the AI Occupancy Detection Application is running, if you change the camera’s image mode or stream settings, the application will restart. If the setting screen or demo screen of the AI Occupancy Detection Application is open, please reload it.
- If you have set a privacy zone, you cannot detect a person within the privacy zone.
- The message ID of TCP alarm notification is “98” for Area 1, “99” for Area 2, “100” for Area 3, and “101” for Area 4.

- When using multiple TCP alarm notifications simultaneously, if one TCP alarm notification is received after setting the “Alarm mask time” of the WJ-NX series network recorder, no other TCP alarm notification will be received during the “Alarm mask time”.
- For TCP alarm notification settings, refer to ‘TCP alarm notification’ in the Operating Instructions of the camera.
- Use Mozilla Firefox, Google™ Chrome™, and Microsoft Edge to display the setting screen or demo screen. Internet Explorer is not supported.
- The demo screen can be displayed on only one browser. It does not support simultaneous access by multiple browsers.
- If the data encryption is set to “On”, the demo screen image will not be displayed.
- The detection frame is not displayed when the setting screen is connected via HTTPS.
- The demo screen does not support an HTTPS connection.
- When used simultaneously with other extension software functions, the position of the person may be significantly misaligned with the frame on the demo screen.
- Depending on various installation conditions and usage environment such as the brightness of the location and the movement of the subject, the person may be difficult to detect, or it may not be detected, or it may malfunction.
- Please evaluate the installation location before installing.
- We shall not be liable for any inconvenience, damage, or loss caused by setting the AI Occupancy Detection function or as a result thereof.
- Please read the Operating Instructions of your camera for the disclaimer, protection of personal information, trademarks and registered trademarks, and copyright.

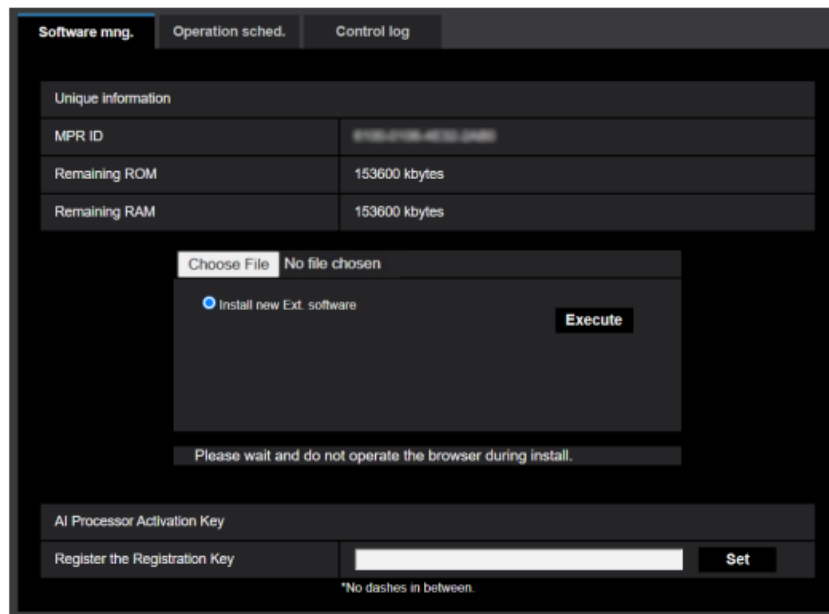
Operation flow



Install the Software

Follow the steps below to download this product and install it on your camera.

1. Access the following URL to download “AI Occupancy Detection” and save it onto the PC. <https://i-pro.com/global/en/surveillance/training-support/documentation-database-list>
 - **Important:** A space cannot be used in the name of the saving directory.
2. Select the [Setup] – [Ext. software] – [Software mng.] tab of the camera.

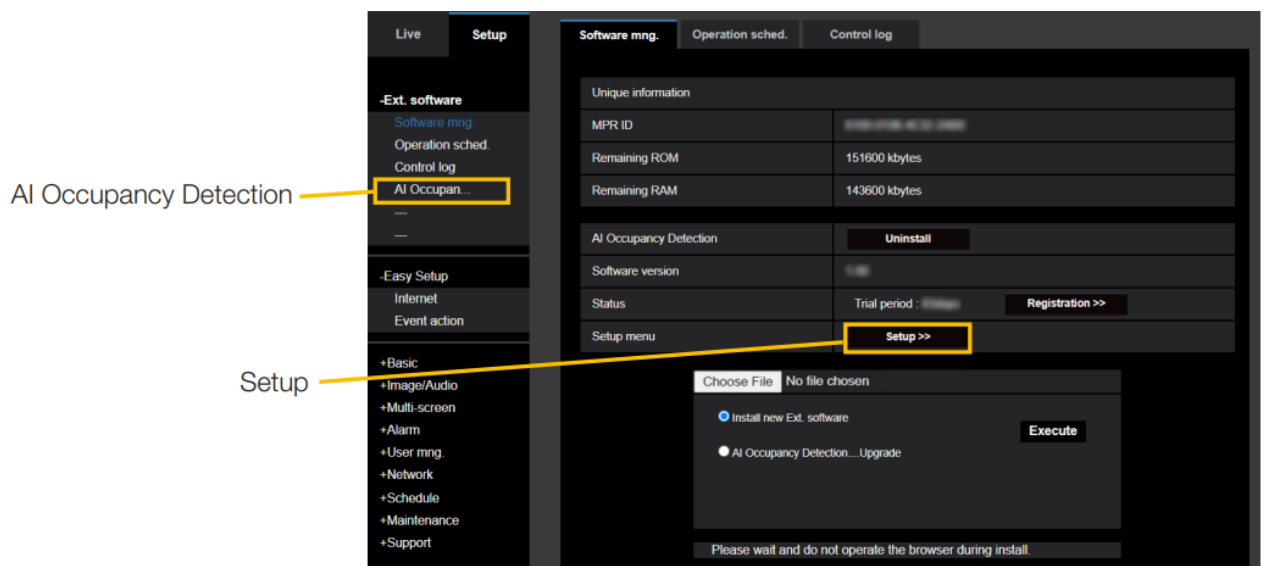


- **Important:** Check the “Remaining ROM” and “Remaining RAM” of the camera. If disk space is insufficient, uninstall any other extension software already installed.
 - For how to uninstall, refer to the “Operation settings” section in the Operating Instructions of the camera.
3. Click the [Browse...] button and designate the downloaded “AI Occupancy Detection”.
 4. Make sure that “Install new Ext. software” is selected and click the [Execute] button.
 - Then the software installation will begin.
 - When the installation is completed, “AI Occupancy Detection” will be added to the list of extended software and the “Software mng.” screen. (The names may be partially omitted.)
- **Important:**
 - Do not turn off the power of the camera when installing the software.
 - Do not perform any operations until the installation is completed.

Necessary Setup

1. Open the setting screen

- After installing the AI occupancy detection application, go to the “Setup” menu > the “Ext. software” page on the camera, where the “AI Occupancy Detection” menu is added to the “Software mng.” tab.

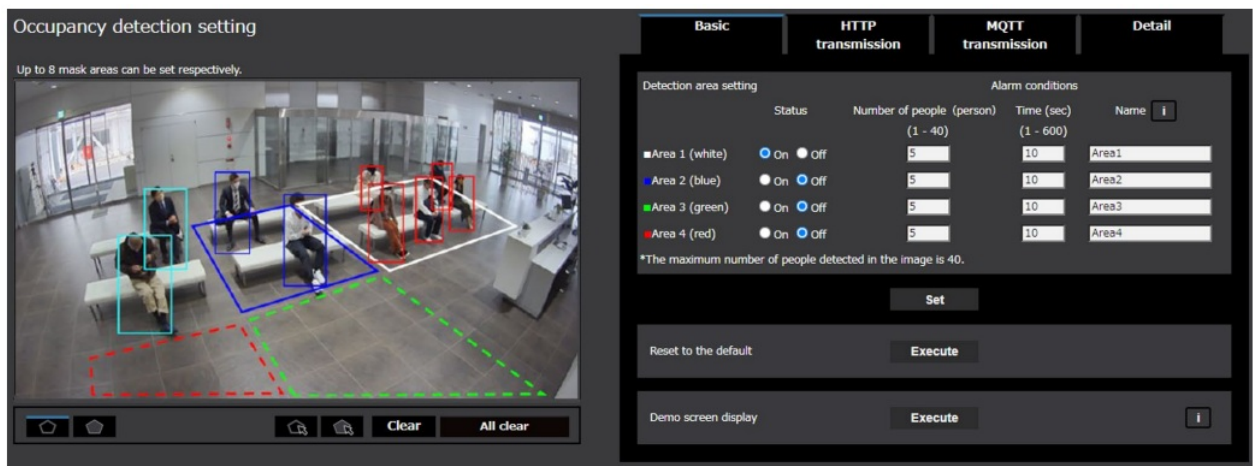


- Click the “AI Occupancy Detection” menu or [Setup] to open the “Occupancy Detection Function Settings” screen.

- Also, to open the “Occupancy Detection Function Settings” screen, it is necessary to register the schedule in advance from the Ext. software” page > the “Operation sched.” tab.
- There are three tabs on the “Occupancy Detection Function Settings” screen: “Basic”, “Connection Settings” and Detail”. The “Basic” tab is selected immediately after “Occupancy Detection Function Settings” is open.
- **Note:** Please use Mozilla Firefox, Google™ Chrome™, or Microsoft Edge to display the setting screen and the demo screen. Internet Explorer is not supported.

2. Basic settings (Basic tab)

- On the Basic screen, you can set the detection area and alarm conditions (Number of people/Time). In addition, you can display the detection area frame and people detection frame on the camera image screen.



- **Camera image screen**
- **[Image screen]** The set areas and the detected people are displayed in frames.
- **Areas:** After the areas are set, frames are displayed in the color of each area.
- **Area 1:** White; **Area 2:** Blue; **Area 3:** Green; **Area 4:** Red.
- **People detection (in red frames):** The people in the area where an alarm has occurred are displayed in red frames.
- **People detection (in blue frames):** The people who have entered an area are displayed in blue frames.
- **People detection (in light blue frames):** The people who are not in any area are displayed in light blue frames.
- **Note**
- When the demo screen is displayed, the people detection frame will not be displayed on the camera image screen.
- The people detection frame can be displayed on only one browser. It does not support simultaneous access by multiple browsers.
- Please reload the browser since detection frames are not displayed automatically even after the demo screen is closed.
- **Detection area setting**
- You can set up to 4 areas to detect. Alarm conditions
- (Number of people and Time) are set separately for each area. Alarms will be activated if the set number of people is exceeded continuously during the set period.
- **[Area 1]-[Area 4]**
- You can set the area of a polygon (up to a hexadecagon) by specifying multiple vertices (up to 16

vertices) on the image. The areas can be set to overlap each other. Please set them in order from Area 1.

- Default setting: Full screen for [Area 1]; no setting for [Area 2]/[Area 3]/[Area 4].
- When a detection area (a polygon) is drawn, the area setting is completed by selecting the starting point at the end.
- To change a detection area, click the “Delete” button to delete it, and then set it again.
- The position of the detection frame is the center of the lower side of the people detection frame. Please set the detection area so that the position of this detection frame falls within the detection area. Refer to “About the detection frame for details.
- **[Status]**
 - Sets whether to enable occupancy detection in the area. On: Occupancy detection is enabled. Frames are displayed in solid lines for areas with occupancy detection enabled.
 - **Off:** Occupancy detection is disabled. Frames are displayed in dashed lines for areas with occupancy detection disabled.
 - **Default setting:** [Area 1] On; [Area 2]/[Area 3]/[Area 4] Off
- **[Alarm conditions] – [Number of people (person)]**
 - Sets the number of people to activate alarms separately for each area.
 - **Settable range:** 1-40 (persons).
 - **Default setting:** 5
- **[Alarm conditions] – [Time (sec)]**
 - Alarms will be activated if the set number of people for each area is exceeded continuously during the set period.
 - Set this time.
 - **Settable range:** 1-600 (sec).
 - **Default setting:** 10
- **Note**
 - The maximum number of people detected in the image is 40.
 - If the number of people in the image exceeds 40, correct occupancy detection will not be possible since some of the people cannot be detected.
 - For the method of counting the passage of time when the number of people detected is less than the number of people set in Alarm conditions, refer to “4. Advanced settings (Detail tab)”.
- **Name**
 - Set a name of up to 20 characters for each area. The set detection area name will be displayed on the i-PRO Active Guard dashboard.
 - **Default setting:** Area 1~4
 - Unavailable characters: Half-width symbols “” “&”
- **[Set]**
 - Click it to enable the detection area setting.
- **Reset to the default [Execute]**
 - Click it to restore the settings of the [Basic] tab, the [Connection Settings] tab, and the [Detail] tab to their default settings.
- **Demo screen display [Execute]**
 - Click it to open the demo screen in a separate window. For details on how to open the demo screen, refer to “5. Open the demo screen.”
- **[i]**

- When you hover the mouse cursor over the icon, the notes on the demo screen are displayed.

- **Note**

- When the demo screen is executed, the detection frame will not be displayed on the setting screen.
- JPEG (1) is displayed on the demo screen. We recommend a resolution setting of 1920×1080 or less for JPEG (1).

3. Connection Settings (Connection Settings tab)

- Sets the transmission destination (1-4) and the transmission interval for sending occupancy information via HTTP.

The screenshot shows the 'Connection Settings' tab with four identical sections for 'Transmission destination 1' through '4'. Each section includes a 'Transmission' checkbox, a 'Delete' button, and input fields for 'Transmission address', 'Transmission path name' (pre-filled with '/AI/OccupancyDetectionA1'), 'SSL' (radio buttons for 'On' and 'Off'), 'Transmission port number' (443, range 1-65535), 'Username', 'Password', and 'Transmission interval' (5min dropdown). A 'Set' button is located at the bottom center.

- **Transmission destination 1/2/3/4**
- Occupancy information can be sent individually to up to 4 addresses.

- The setting items for the four transmission destinations are the same.
- **[Transmission]**
 - Check it to send information.
 - Default setting: Unchecked
- **[Transmission address]**
 - Sets the IP address or hostname of the HTTP server for transmission.
 - **The maximum allowable number of characters:** is 63 Allowable characters: Half-width alphanumeric characters; half-width symbols [., [], [-]
 - **Default setting:** a blank space
- **[Delete]**
 - Click it to restore [Transmission address] to the blank state.
- **[Transmission path name]**
 - Enter the path name of the transmission destination.
 - **The maximum allowable number of characters:** 128 Forbidden characters: Half-width symbols “ , “&”, “,” , “.” , “:” , “;” , “\”
 - **Default setting:** /AIOccupancyDetectionApp
- **[Delete]**
 - Click it to restore [Transmission path name] to the blank state.
- **[SSL]**
 - Select whether to use SSL for transmission.
 - **Default setting:** On
- **[Transmission port number]**
 - Sets the port number of the transmission destination.
 - **Allowable port number:** 1-65535
 - **Default setting:** 443
- **[Username]**
 - Enter the user name for authentication with the transmission destination.
 - Allowable number of characters: 0-63
 - Forbidden characters: Half-width symbols “ , “&”, “.” , “:” , “;” , “\”
 - Default setting: a blank space
- **[Password]**
 - Enter the password for authentication with the transmission destination.
 - Allowable number of characters: 0-63
 - **Forbidden characters:** Half-width symbols “”” and “&”
 - **Default setting:** a blank space
- **[Transmission interval]**
 - Select the time interval for transmission.
 - 5sec, 10sec, 15sec, 1 min, 5 min, 10 min, 15 min, 30 min, 60 min
 - Default setting: 5 min
- **[Set]**
 - Click it to enable the setting of transmission destinations 1-4.

- **MQTT transmission**
 - Set the transmission content and transmission interval for occupancy data transmission via MQTT.
- **[Transmission of count data]**
 - Check the box to send count data.
- **Default setting:** Unchecked
- **[Alarm notification]**
 - Check the box to send alarm notifications.
- **Default setting:** Unchecked
- **[To MQTT transmission setting]**
 - Click to display the MQTT setting screen of the camera.
- **[Topic]**
 - Enter the name of the MQTT topic to be sent. Enter single-byte alphanumeric characters or symbols, up to 128 characters.
- **[QoS]**
 - Select QoS level 0, 1, or 2. Communication quality is higher with $0 < 1 < 2$.
 - Messages are delivered at most once with QoS0.
 - There is no guarantee that the message will reach the server.
 - Messages are delivered at least once with QoS1. It is assumed that the message will reach its destination, but it may be duplicated.
 - Messages are delivered exactly once with QoS2. It is assumed that the message will arrive only once, no more no less. Default setting: 1
- **[Retain]**
 - Check this box to have the last notified message stored on the MQTT server.
- **Default:** Unchecked
 - [Transmission interval (Transmission of count data only)]
 - Select the time interval for transmission of count data.
 - 5sec, 10sec, 15sec, 1 min, 5 min, 10 min, 15 min, 30 min, 60 min

- **Default:** 5 min
- **Note** Please refer to the “AI Occupancy Detection I/F Specification” in the URL below for details on HTTP interval transmission and MQTT transmission.
- <https://i-pro.com/global/en/surveillance/training-support/support/technical-information> <C0319>

4. Advanced settings (Detail tab)

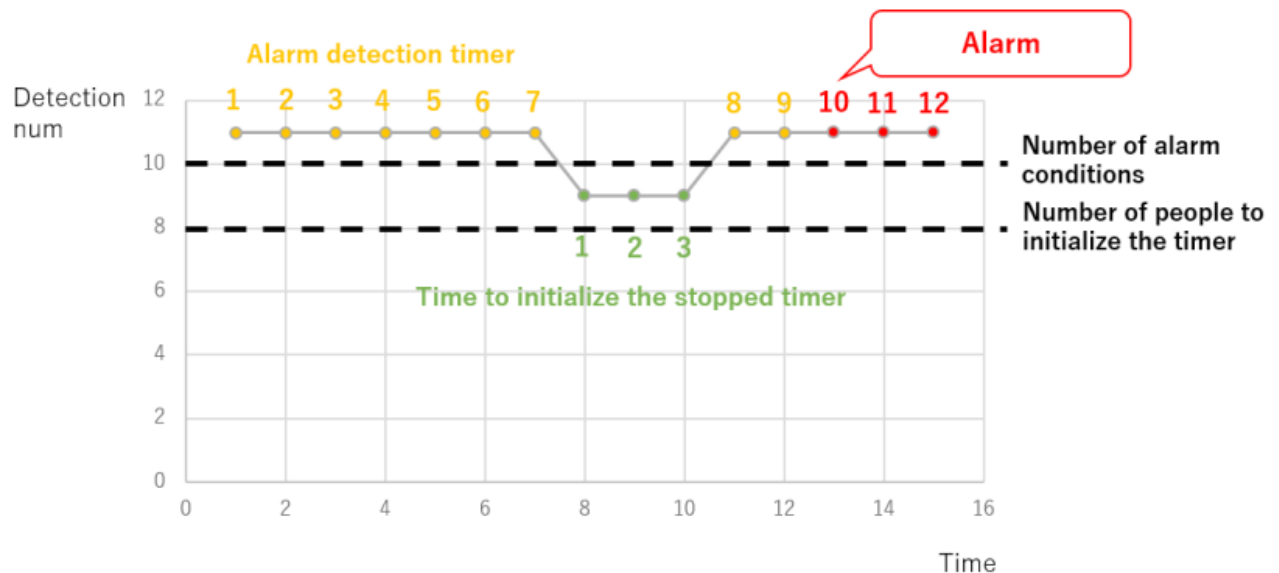
- Sets the condition to reset the alarm detection timer that measures “Time (sec)” in Alarm conditions on the “Basic” tab, and adjusts the alarm notification operation settings according to your environment.

- **Occupancy detection time reset conditions**
- When the number of people detected in the detection area is exceeded, the alarm detection timer is started; and when the timer reaches “Time (sec)” in “Alarm conditions”, the alarm is detected. The alarm detection timer operates as follows.
- When [Alarm conditions] – [Number of people (person)] is exceeded: The alarm detection timer is started.
- When “Percentage of people to reset the occupancy detection time (%)” is exceeded and [Alarm conditions]
- [Number of people (person)] is not reached: The alarm detection timer is paused.
- When the “Percentage of people to reset the occupancy detection time (%)” is not reached: The alarm detection timer is initialized.
- Here, you can make settings related to the initialization of the alarm detection timer.
- **[Percentage of people to reset the occupancy detection time (%)]**
- Select the percentage of people to reset the occupancy detection time in “Time (sec)” of “Alarm conditions”. If this percentage is not reached, the timer will be initialized. 50%, 60%, 70%, 80%, 90%, 100%
- **Default setting:** 80%
- **[Time to reset the occupancy detection time during pause (sec)]**
- Set the time to stop the timer when the number of people detected exceeds “Percentage of people to reset the occupancy detection time (%)” but does not reach the Number of people (person)” in “Alarm conditions”.
- If this time is exceeded, the timer will be initialized.

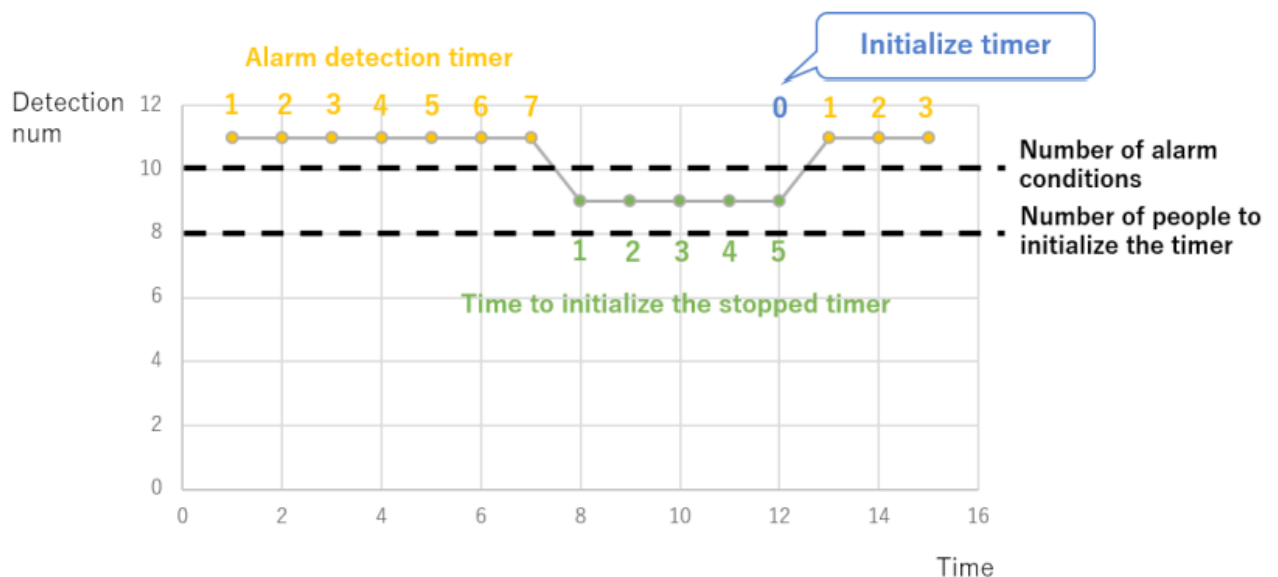
- **Allowable time:** 0-600 (sec)
- **Default setting:** 5 (sec)
- **Alarm notification operation setting**
 - Set the notification operation when the “Number of people (person)” in “Alarm conditions” is exceeded continuously after the alarm is detected.
- **Periodic notification:** The alarm is notified at the time interval “Time (sec)” in “Alarm conditions”.
- **Continuous notification:** The alarm is continuously notified at the time interval of “Alarm deactivation time” of the camera.
- **One-time notification:** The alarm is notified only the first time the alarm conditions of “Number of people (person)” and “Time (sec)” are met.
- **Default setting:** Periodic notification
- **Human identification threshold**
 - Set the threshold for identifying a person’s head or body. The smaller the value, the easier it is for humans to be identified, but the greater the likelihood of false positives. Available setting: 1~99
- **Default setting:** (head) 30, (body) 25
- **Minimum size of detectable human(pixel)**
 - Input the minimum number of pixels (horizontal width) for detection. Exclude detection results that are less than the set number of pixels. Available settings may vary depending on the resolution. (E.g., 3840 for a 4K camera)
- **Available setting:** 0~****
- **Default setting:** 38
- The interval for the transmission of ONVIF
- Set the interval for the transmission of ONVIF.
- 5 s, 10 s, 15 s, 1 min
- **Default setting:** 5 secs
- **Add detection frame information to video data**
 - To add the detection frame information of this product to the stream additional information, set this setting to “On”.
 - When using multiple extension software at the same time, the size limit of the stream of additional information that can be sent by the camera may be exceeded. In that case, set this setting to “Off”.
 - Note that if this product is connected to a system that uses stream additional information, be careful to set it to “Off”.
- **Default setting:** On
- **Saving count data in csv format**
 - To save count data in csv, set this setting to “On”. For details, refer to the External Interface Specifications.
- **Default setting:** Off
- **Note**
 - Count data will be stored for 2 years (732 days).
 - Data will be stored for a longer time than the above storage time. The excess storage time will depend on the camera’s time zone setting (maximum 23 hours).
- **Example:** If the time zone is +9.00 732 days + 9 hours
- The count data immediately before the operation schedule is turned off may not be saved.

- **Note**

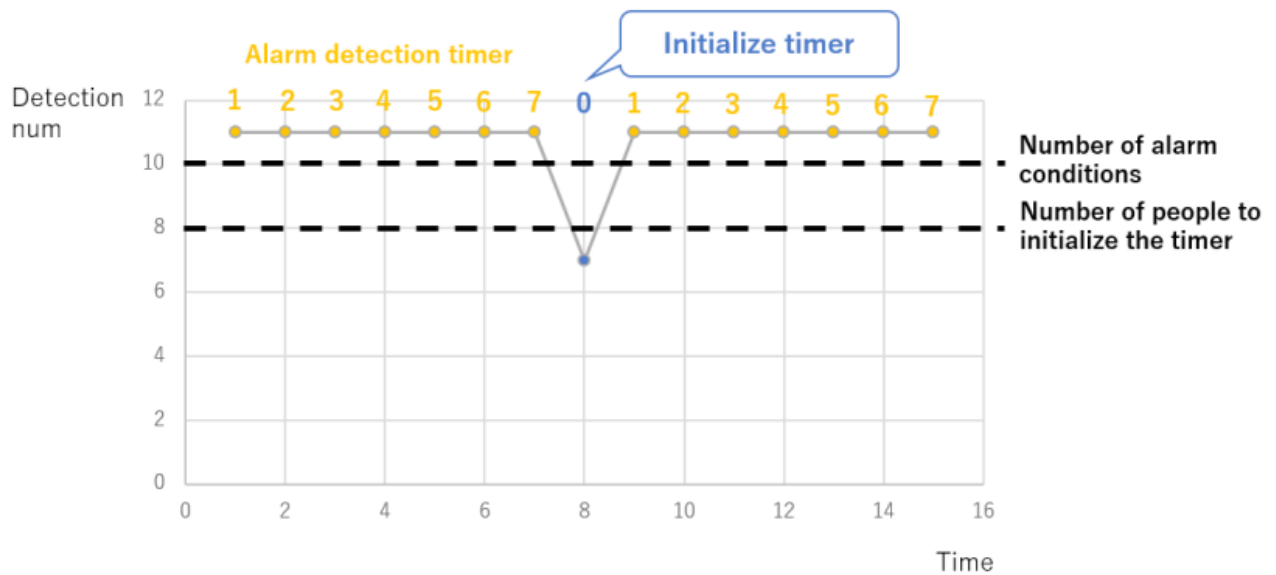
- Adjust the reset conditions of the alarm detection timer according to your environment.
- Truncate the decimal point of (Percentage of people to reset the occupancy detection time (%)) × (Number of people (person) in Alarm conditions).
- For example, if 12 people × 80% = 9.6 people, then it would be 9 people.
- Please refer to the following table and graph for the mechanism of the reset condition of the alarm detection timer.
- This is the example for the below conditions.
- Number of people to cause an alarm: 10 people
- Time to cause an alarm: 10 seconds
- Percentage of people to reset the occupancy detection time: 80%
- Time to reset the occupancy detection time during a pause: 5 seconds
- When the tenth person is detected, after ten seconds the alarm is triggered.
- If the number of people detected drops down to eight or nine people, then the alarm will pause.
- If the number moves back up to ten within five seconds (reset time setting), then the alarm state continues.



- If the number holds at eight or nine for more than five seconds (reset time setting) the alarm state ends.



- If the number of detected people drops below eight, the alarm state ends.

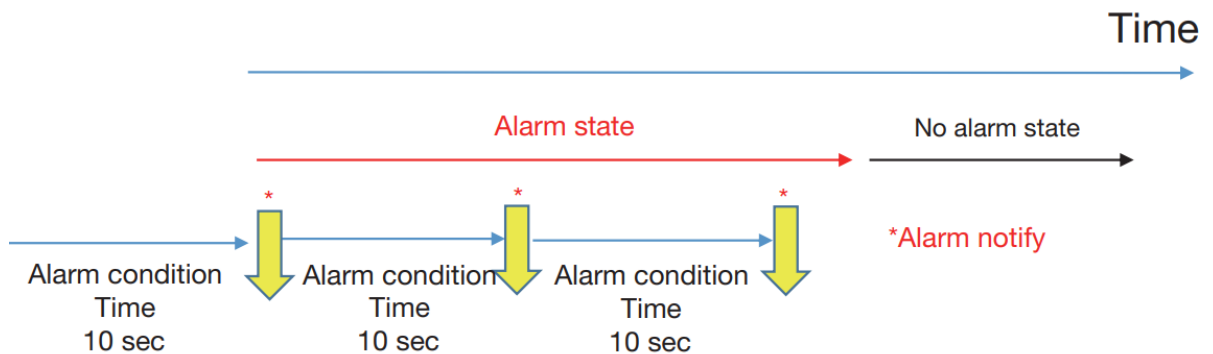


- Below is the difference in the notification operation between “Periodic notification” and “Continuous notification” in the “Alarm notification operation setting”.
- For periodic notification, if the “Time (sec)” of the alarm conditions is shorter than the “Alarm deactivation time” of the camera, the alarm may not be notified at the “Time (sec)” interval of the alarm conditions.

• Alarm notification example

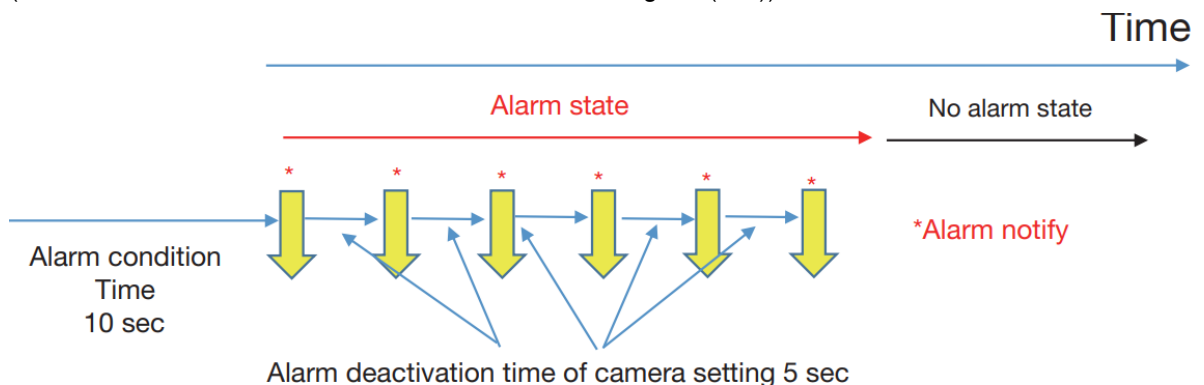
• Periodic notification

- (Ex. The time of alarm condition is 10(sec))



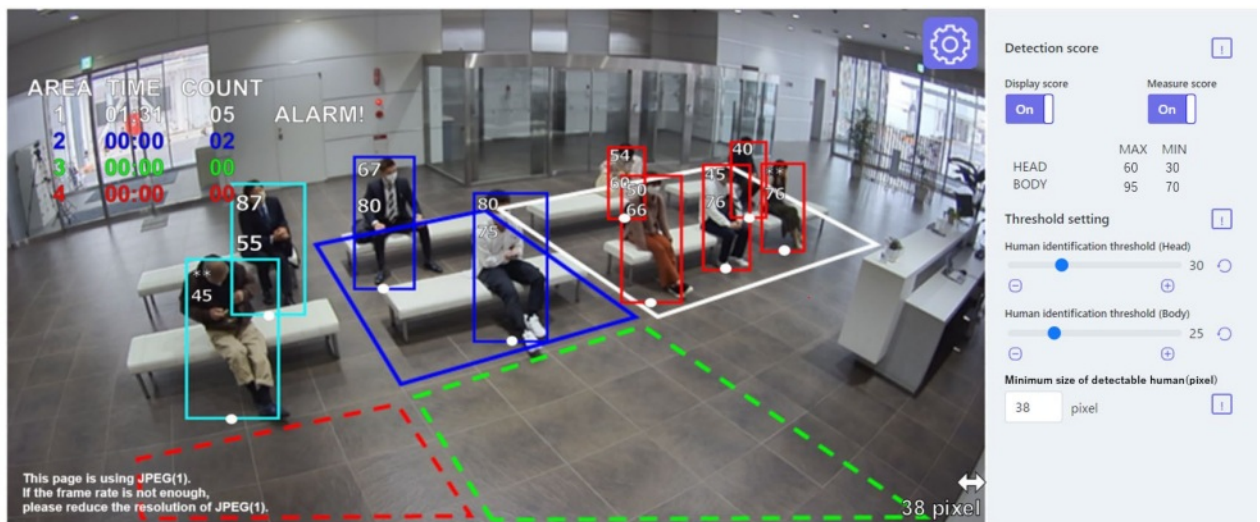
• Continuous notification


- (Ex. The alarm deactivation time of the camera setting is 5(sec))



5. Demo screen

- Click the “Execute” button on the “Demo screen display” of the “Basic” tab to open the demo screen.
- The detection area, the detection frame, the timer of each detection area, the number of people detected, and the alarm will be displayed.
- **Note:**
- A JPEG (1) image is displayed on the demo screen. Please set the resolution for JPEG (1) to 1920×1080.

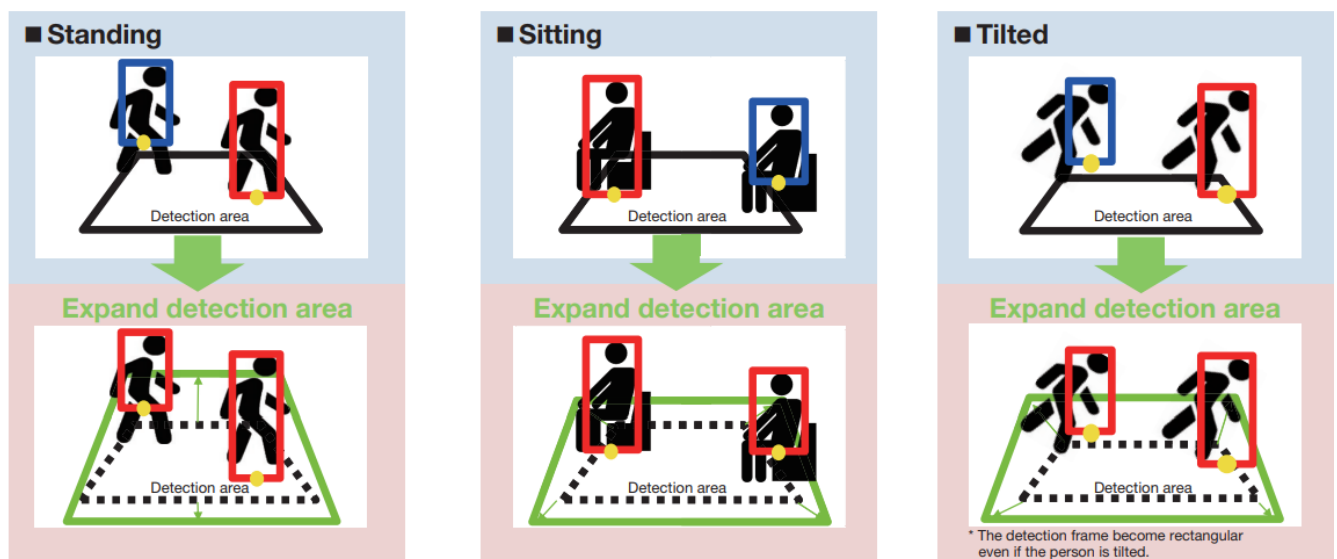


- **[Detection area]**
- The set detection area is displayed in color.
- **Area 1:** White; **Area 2:** Blue; **Area 3:** Green; **Area 4:** Red.
- Solid lines: Indicates an area set to “On”.
- Dashed lines: Indicates an area set to “Off”.
- **[Detection frame]**
- A frame is displayed when a person is detected.
- **People detection (in red frames):**
- The people in the area where an alarm has occurred are displayed in red frames.
- **People detection (in blue frames):**
- The people who have entered an area are displayed in blue frames.
- **People detection (in light blue frames):**
- The people who are not in any area are displayed in light blue frames.
- **[White dot in the detection frame]**
- The white dot in the person detection frame shows the position of the person’s feet.
- **[Area status] (Areas 1-4)**
- **Time:** Displays the time (timer) when the set number of people is exceeded.
- **Count:** Displays the number of people detected.
- **Alarm!** : Displayed when an alarm is detected.
- **[Settings] button** 
- Click to display the [Display score] and [Measure score] toggle switch and threshold settings.
- **[Display score]**
- When the switch is “On”, the head score (top) and body score (bottom) are displayed in the upper left corner of the detection frame.
- If the detection score is below the threshold, “***” is displayed.
- **[Measure score]**
- When set to “On”, measurement of the maximum and minimum detection score is started and the measurement result (MAX/MIN) will be displayed on the demo screen.
- When set to “Off,” measurement is stopped.
- **Note**
- Please use Mozilla Firefox, Google™ Chrome™, or Microsoft Edge to display the demo screen.
- Internet Explorer is not supported.

- The demo screen can be displayed on only one browser. It does not support simultaneous access by multiple browsers.
- If the data encryption is set to “On”, the demo screen image will not be displayed.
- When used simultaneously with other extension software functions, the position of the person may be significantly misaligned with the detection frame on the demo screen.
- The demo screen is for demo purposes and, thus not recommended for actual operation.
- If the Display score is set to “Off”, the Measure score cannot be set to “On”.

About the detection frame

- Please set a larger detection area since the display of the detection frame changes with the state of the person.
- The position of the detection frame is the center of the lower side of the people detection frame. Please set the detection area so that the position of this detection frame falls within the detection area.



Open Source Software


The MIT License (MIT) Copyright (c) 2015 Andrew Putilov

- Permission is hereby granted, free of charge, to any person obtaining a copy of this software and associated documentation files (the “Software”), to deal in the Software without restriction, including without limitation the rights to use, copy, modify, merge, publish, distribute, sublicense, and/or sell copies of the Software, and to permit persons to whom the Software is furnished to do so, subject to the following conditions:
- The above copyright notice and this permission notice shall be included in all copies or substantial portions of the Software.
- THE SOFTWARE IS PROVIDED “AS IS”, WITHOUT WARRANTY OF ANY KIND, EXPRESS OR IMPLIED, INCLUDING BUT NOT LIMITED TO THE WARRANTIES OF MERCHANTABILITY, FITNESS FOR A PARTICULAR PURPOSE, AND NONINFRINGEMENT. IN NO EVENT SHALL THE AUTHORS OR COPYRIGHT HOLDERS BE LIABLE FOR ANY CLAIM, DAMAGES OR OTHER LIABILITY, WHETHER IN AN ACTION OF CONTRACT, TORT OR OTHERWISE, ARISING FROM, OUT OF OR IN CONNECTION WITH THE SOFTWARE OR THE USE OR OTHER DEALINGS IN THE SOFTWARE.
- This software is based in part on the work of the Independent JPEG Group.
- Redistribution and use in source and binary forms, with or without modification, are permitted provided that the

following conditions are met:

- Redistributions of source code must retain the above copyright notice, this list of conditions, and the following disclaimer.
 - Redistributions in binary form must reproduce the above copyright notice, this list of conditions, and the following disclaimer in the documentation and/or other materials provided with the distribution.
 - Neither the name of the libjpeg-turbo Project nor the names of its contributors may be used to endorse or promote products derived from this software without specific prior written permission.
 - THIS SOFTWARE IS PROVIDED BY THE COPYRIGHT HOLDERS AND CONTRIBUTORS "AS IS", AND ANY EXPRESS OR IMPLIED WARRANTIES, INCLUDING, BUT NOT LIMITED TO, THE IMPLIED WARRANTIES OF MERCHANTABILITY AND FITNESS FOR A PARTICULAR PURPOSE ARE DISCLAIMED. IN NO EVENT SHALL THE COPYRIGHT HOLDERS OR CONTRIBUTORS BE LIABLE FOR ANY DIRECT, INDIRECT, INCIDENTAL, SPECIAL, EXEMPLARY, OR CONSEQUENTIAL DAMAGES (INCLUDING, BUT NOT LIMITED TO, PROCUREMENT OF SUBSTITUTE GOODS OR SERVICES; LOSS OF USE, DATA, OR PROFITS; OR BUSINESS INTERRUPTION) HOWEVER CAUSED AND ON ANY THEORY OF LIABILITY, WHETHER IN CONTRACT, STRICT LIABILITY, OR TORT (INCLUDING NEGLIGENCE OR OTHERWISE) ARISING IN ANY WAY OUT OF THE USE OF THIS SOFTWARE, EVEN IF ADVISED OF THE POSSIBILITY OF SUCH DAMAGE.
 - <https://www.i-pro.com/>
-

Documents / Resources

	i-PRO WV-XAE207W AI Occupancy Detection Extension Software [pdf] Instruction Manual WV-XAE207W, WV-XAE207W AI Occupancy Detection Extension Software, AI Occupancy Detection Extension Software, Detection Extension Software, Extension Software, Software
---	---

References

- [Surveillance | i-PRO Products](#)
- [i-PRO](#)
- [User Manual](#)

[Manuals+](#), [Privacy Policy](#)

This website is an independent publication and is neither affiliated with nor endorsed by any of the trademark owners. The "Bluetooth®" word mark and logos are registered trademarks owned by Bluetooth SIG, Inc. The "Wi-Fi®" word mark and logos are registered trademarks owned by the Wi-Fi Alliance. Any use of these marks on this website does not imply any affiliation with or endorsement.