



i-PRO WJ-NX300K-G Network Disk Recorder User Guide

[Home](#) » [i-PRO](#) » [i-PRO WJ-NX300K-G Network Disk Recorder User Guide](#) 

i-PRO WJ-NX300K-G Network Disk Recorder

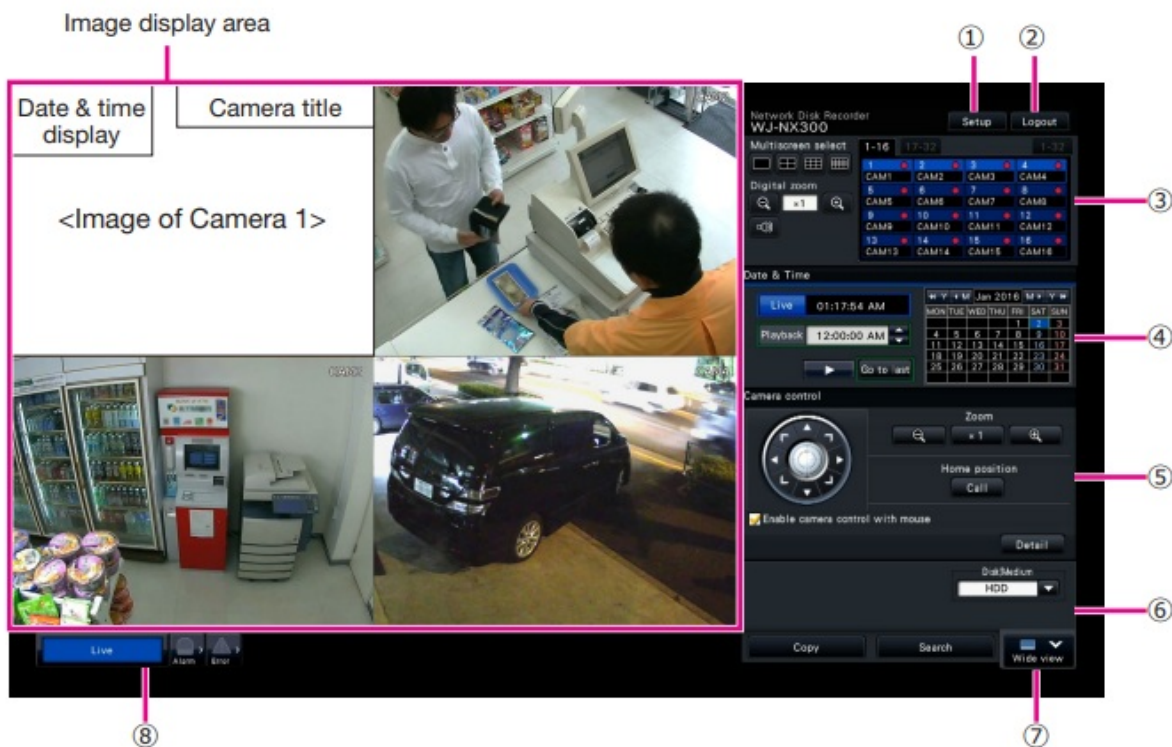


Contents

- [1 Perform Basic Operations on the Screen](#)
- [2 Select a camera and switch images](#)
- [3 Play recorded images](#)
- [4 Operation during playback](#)
- [5 Status display](#)
- [6 When an alarm or error occurs](#)
- [7 Copy recorded images on a USB medium.](#)
- [8 Documents / Resources](#)
- [9 Related Posts](#)

Perform Basic Operations on the Screen

The recorder is operated with the mouse (accessory) connected to either the front or rear of the recorder. To perform operations, either click buttons on the operation window displayed on the main monitor or turn the mouse wheel.



1. [Setup] button

Displays the setup menu. The login window will be displayed for users who are not authorized to perform the operation.

2. [Logout] button

It is possible to log out from the recorder from this menu. To prevent operation by unauthorized persons, it is recommended to log out before leaving the recorder unattended.

3. Operation panel

☞ "Select a camera and switch images"

4. Date & time operation panel

☞ "Play image recorded at a designated date & time"

5. Camera control panel

Contains the buttons for operating cameras with the panning/ tilting function. These allow panning/tilting and zooming of the camera, moving the camera to a preset position, and adjusting the focus and brightness.

6. Playback operation panel (While live images are being displayed) Select the HDD of the recorder or the storage media from which to play back copied image data. This panel is also used to perform playback of images. (☞ "Operation during playback")

7. [Wide view] button

Camera images will be displayed in wide view on a multiscreen. While images are being displayed on a full screen, ⑦ will be changed to the [Ctrl screen] button. For camera operations, click the [Ctrl screen] button to return to this screen.

8. Status display panel

☞ "Status display" ☞ "When an alarm or error occurs"

How to log in

During logout, ② becomes the [Login] button. When the login window is displayed, enter the user name and password.

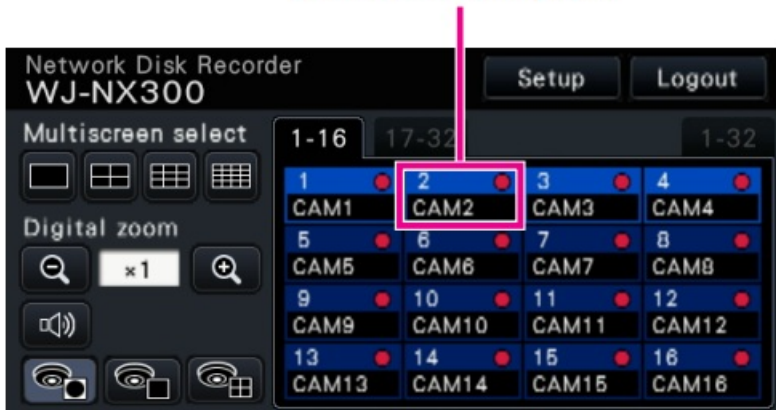


Select a camera and switch images

Select a camera and display live images

Select a tab containing a camera number that you want to select and then click the camera number panel. While displaying on a multiscreen, double-clicking the image in the image display area will switch to display of the clicked camera images on a 1-screen.

Camera number panel

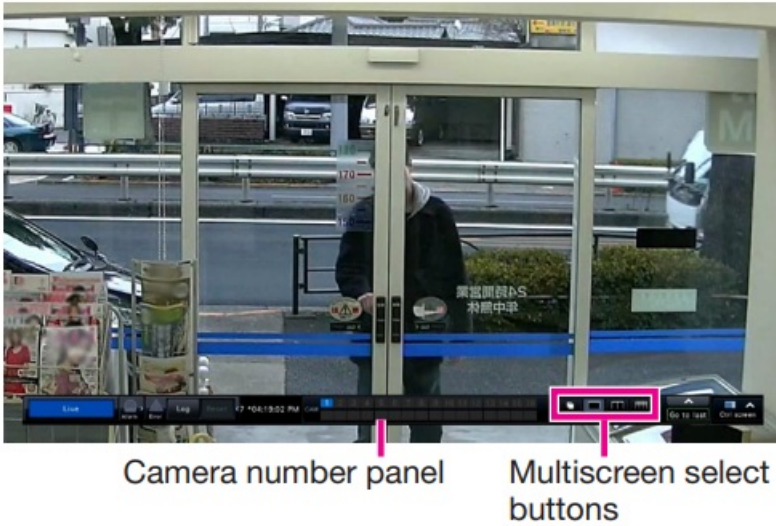


Display images on a multiscreen

Click the “Multiscreen select” button corresponding to the number of screens to display. If the 4-screen is selected, each click of the button will switch the screen by 4 camera images such as camera 1 to 4, 5 to 8, 9 to 12 and 13 to 16. Clicking the camera number panel will switch to a 4-screen displaying the images of 4 cameras, including the selected one. The above operation also applies to the 9-screen/16-screen.

Change the multiscreen pattern and the camera display position

1. Click the [Wide view] button.
2. Click the Multiscreen select button corresponding to the number of screens to display.
3. To change the camera display position, drag & drop the camera number panel to the desired display position in the image display area.



Play recorded images

Play images recorded at a designated date & time

1. Click the [▲]/[▼] button in the [Playback] box to set the desired time.
2. Click the desired date on the calendar.



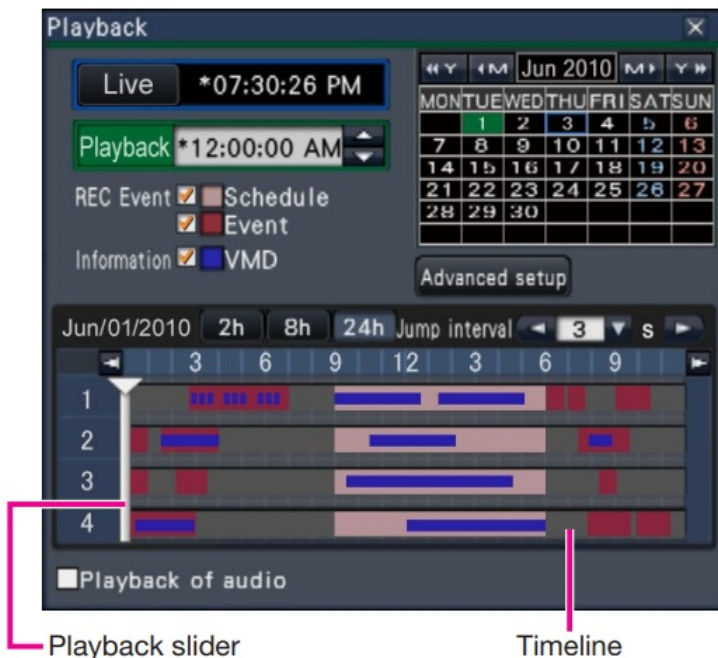
→ Playback will start.

* Unless you wish to change the date, set the playback time and click the [Play] button.

Playback by designating a timeline

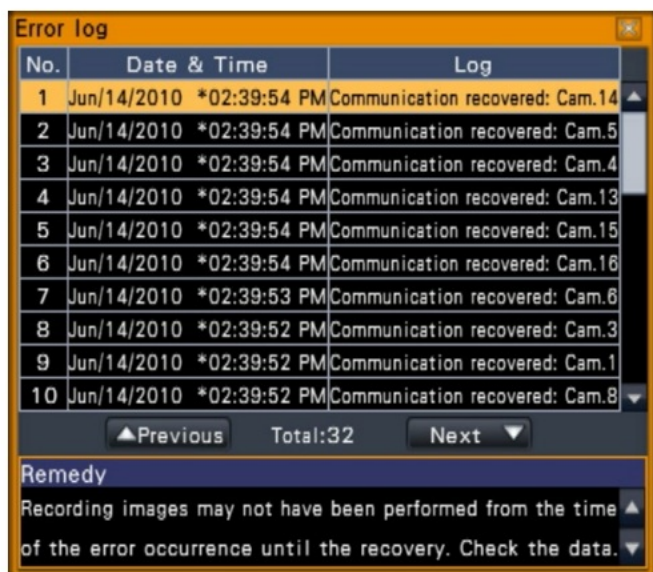
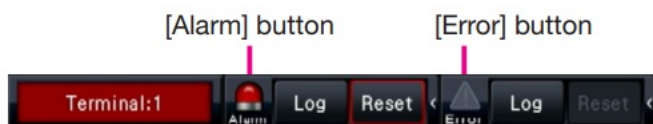
- The playback time of recorded images can be changed by dragging the playback slider on the timeline.
- To skip to the designated point, set the "Jump interval" and click the [◀]/[▶] buttons.
- To display the desired time zones on the timeline, mark the checkboxes of the respective items.

Schedule: Schedule recorded time zone Event: Event recorded time zone VMD: Time zone within which motion was detected in an image



Play images selected from logs

1. Click the [Alarm] button or [Error] button on the status display panel.
2. Click the [Log] button.
3. Select the line with the desired date & time by clicking it, and click the [Play] button on the playback operation panel.



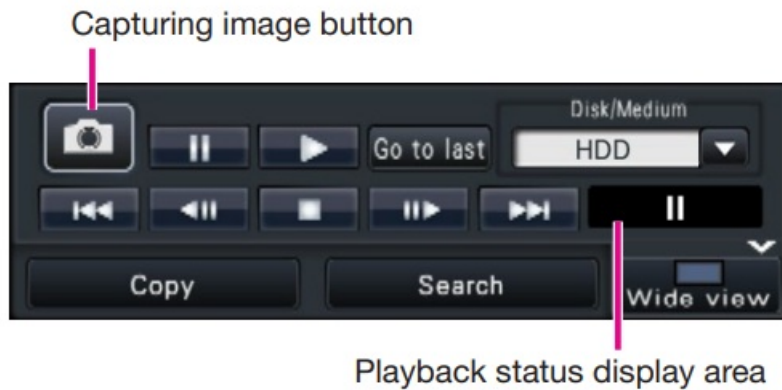
<When an error (alarm) has occurred>

A remedy will be displayed in the "Error log". Resolve the problem by following the instructions given.

Operation during playback

During playback, the playback panel changes as shown below. It contains buttons for playback operations such as playing recorded images, pausing, fast forward and playing next image. Refer to the Operating Instructions (PDF) for details.

- Clicking the capturing image button while playback is paused will save a still image (JPEG) on the USB medium.
- The playback status display area shows the playback status of recorded images.
During fast forward/fast reverse playback, it will display the playback speed (x2, x4, x8, x16, x32, x48)
- The playback speed will change each time the fast forward/fast reverse button is clicked.
- Clicking the [Go to last] button will make playback skip to the latest recorded images. The starting point is around 30 seconds before the date & time of the latest recorded images.



Status display

The status display panel displays the statuses of the recorder. In the event that the recorder enters several statuses at the same time, these are displayed in their order of priority. If both statuses have the same priority, the one that occurred last will be displayed.

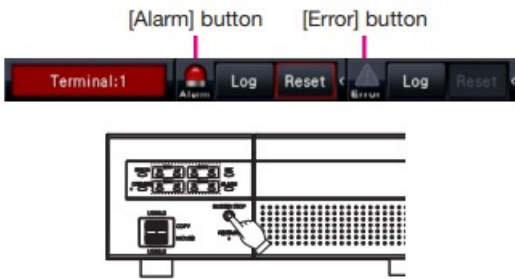
Status	Description	Example	Priority
Live	Live images are being displayed.		6 (Low)
During playback	Recorded images are being played.		6
In the process of RAID recovery	Indicates that data recovery in the RAID mode is being performed		5
Downloading SD data	Indicates that SD memory data is being obtained from camera.		4
Copying	Data is being copied. Copying progress is displayed in %		3
Formatting USB	USB medium is being formatted.		3
In the alarm state	Indicates an alarm occurrence. Detailed information of the alarm will be displayed.		2
Emergency recording	Emergency recording is on.		2
In the error state	Indicates that an error has occurred. A detailed description of the error content will be displayed.		1
Displaying thumbnail	Thumbnail search screen is being displayed.		0 (High)

When an alarm or error occurs

When an alarm or an error occurs, the recorder performs alarm or error actions in accordance with the previously made settings.

Cancel the alarm/error action

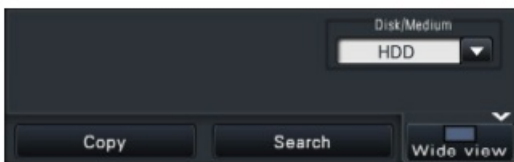
1. When an alarm or error occurs, click the [Alarm] button or [Error] button on the status display panel.
2. Click the [Reset] button.



The buzzer can be stopped by pressing the [BUZZER STOP] button on the recorder's front panel.

Copy recorded images on a USB medium.

1. Insert an external recording device to the copy port [COPY] of the recorder.
 - * When using an unformatted USB medium, format it using this recorder.
 Refer to the Operating Instructions (PDF) for how to format a USB medium.
2. Click the [Copy] button.
3. Perform settings by following the instructions on the screen and then click the [Copy] button.
4. Click the [OK] button in the copy start "Confirmation" window.

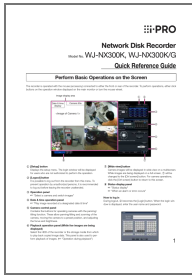


How to play back the copied images

The copied images can be played on the recorder or on a PC using the dedicated viewer software. The viewer software will automatically be copied on the storage medium on which recorded images are copied.

To play back on this recorder, select the storage medium for copying under "Disk/medium", select the line with the desired playback date & time from the displayed copied data list, and click the [Play] button.





[i-PRO WJ-NX300K-G Network Disk Recorder](#) [pdf] User Guide
WJ-NX300K-G Network Disk Recorder, WJ-NX300K-G, Network Disk Recorder, Disk Recorder, Recorder

[Manuals+](#)