



HYTRONIK HBTD8200D/F Bluetooth Receiver Node DALI Version Instruction Manual

[Home](#) » [HYTRONIK](#) » HYTRONIK HBTD8200D/F Bluetooth Receiver Node DALI Version Instruction Manual 



HYTRONIK HBTD8200D/F Bluetooth Receiver Node DALI Version



Contents

- [1 Technical Specifications](#)
- [2 Download the App](#)
- [3 Dimming Interface Operation Notes](#)
- [4 Installation](#)
- [5 Additional Information / Documents](#)
- [6 Documents / Resources](#)
 - [6.1 References](#)
- [7 Related Posts](#)

Technical Specifications

Product type	 Bluetooth DALI Digital Receiver Node (Flush mount)
Mains voltage	220~240VAC 50/60Hz
Rated load	Max.100mA, 50 devices
Stand-by power	<0.5W
Operation frequency	2.4 GHz – 2.483 GHz
Transmission power	4 dBm
Range (Typical)	10 ~ 30m
Protocol	 Bluetooth 5.0 SIG Mesh
Operation temperature	Ta: -20°C ~ +45°C
Case temperature (Max.)	Tc: +75°C
Storage temperature	-20°C ~ +60°C
Max. relative humidity	20 ~ 90%
IP rating	IP20
Impulse withstand voltage	2.5KV
Duty type	S1
Insulation material	PTI material group IIIa
Glow wire	level 3, 850°C
Protection	Built-in protection provide
Insulation	Class II
EMC standard (EMC)	EN55015, EN61547, EN61000-3-2, EN61000-3-3
Safety standard (LVD)	IEC 61058-1, EN 61058-1, IEC 61058-1-2 EN 61058-1-2, AS/NZS 61058.1
Radio Equipment (RED)	EN300 328, EN301489-1, EN301489-17, EN62479

Download the App

Free App for set-up and commissioning

Bluetooth 5.0 SIG mesh



for iOS



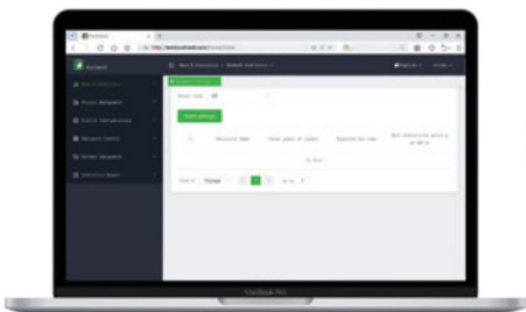
for Android

Smartphone app for both iOS & Android platform



for iPad

Koolmesh Pro app for iPad



www.hytronik.com

Web app/platform: www.iot.koolmesh.com

Dimming Interface Operation Notes

Switch-Dim

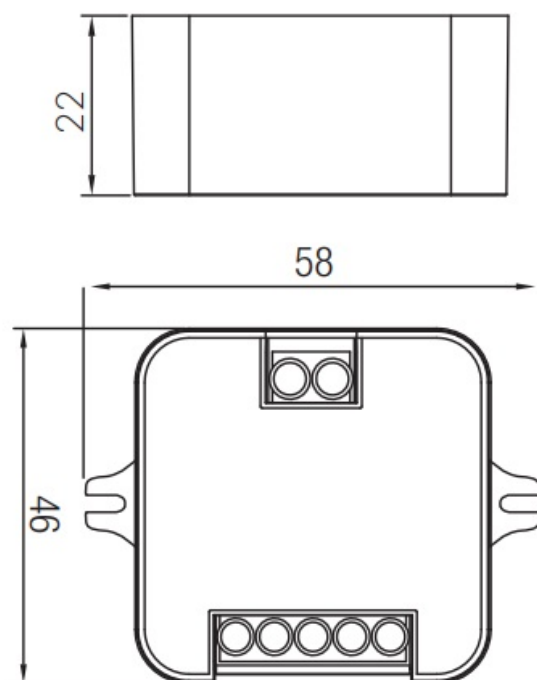
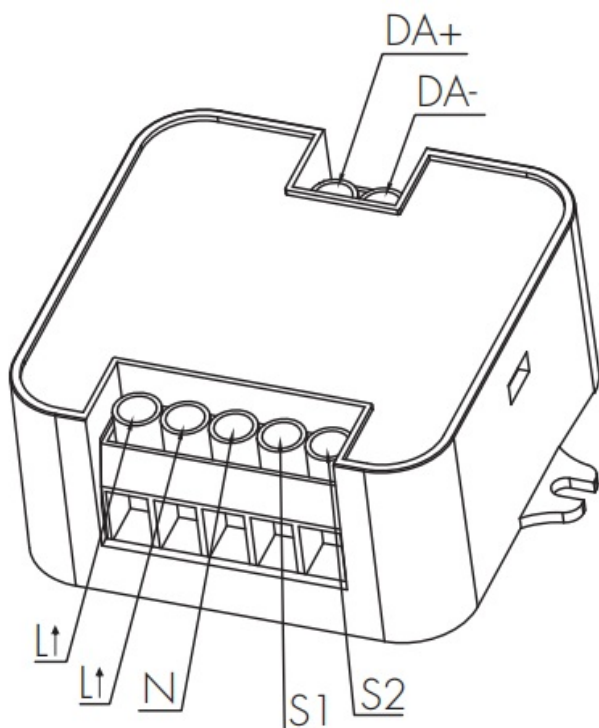
The provided Switch-Dim interface allows for a simple dimming method using commercially available non-latching (momentary) wall switches. Detailed Push switch configurations can be set on Koolmesh app.

Switch Function	Action	Descriptions
Push switch	Short press (<1 second) * Short press has to be longer than 0.1s, or it will be invalid.	<ul style="list-style-type: none">• Turn on/off – Recall a scene• Turn on only – Exit manual mode• Turn off only – Do nothing
	Double push	<ul style="list-style-type: none">• Turn on only – Exit manual mode• Turn off only – Do nothing• Recall a scene
	Long press (≥ 1 second)	<ul style="list-style-type: none">• Dimming• Colour tuning• Do nothing
Simulate sensor	/	– Upgrade a normal on/off motion sensor to a Bluetooth controlled motion sensor

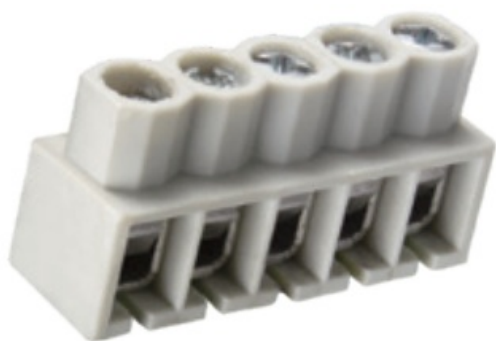
Installation

Warnings:

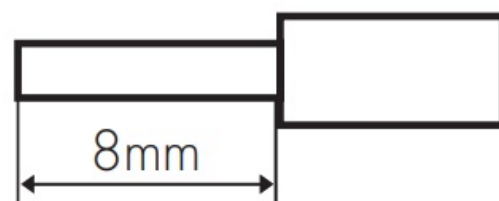
1. Installation must be carried out by a qualified engineer in accordance with local regulations.
2. Disconnect power supply before installing.
3. Ensure environmental conditions are suitable for electronic equipment



Wire Preparation

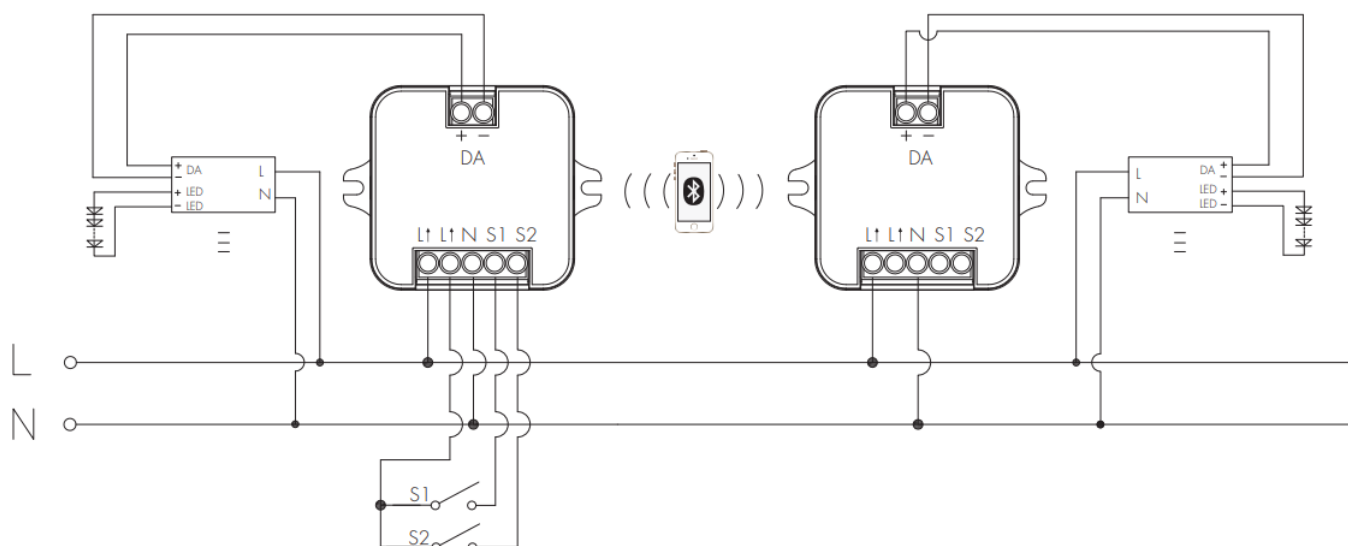


0.75 - 4mm²



Rising clamp terminal.

Wiring Diagram




Additional Information / Documents

1. To learn more about detailed product features/functions, please refer to www.hytronik.com/download ->knowledge ->Introduction of App Scenes and Product Functions
2. Regarding precautions for Bluetooth product installation and operation, please kindly refer to www.hytronik.com/download ->knowledge >Bluetooth Products – Precautions for Product Installation and Operation
3. Data sheet is subject to change without notice. Please always refer to the most recent release on www.hytronik.com/products/bluetooth technology ->Bluetooth Sensor ->Receiver Nodes
4. Regarding Hytronik standard guarantee policy, please refer to www.hytronik.com/download ->knowledge ->Hytronik Standard Guarantee Policy

HYTRONIK®

Documents / Resources

	<p>HYTRONIK HBTD8200D/F Bluetooth Receiver Node DALI Version [pdf] Instruction Manual HBTD8200D-F, Bluetooth, Bluetooth Receiver, Node, DALI Version</p>
--	--

References

- [Catalogue_Hytronik](#)
- iot.koolmesh.com