



## Hysiry Q2SCWM smart Bulb User Manual

[Home](#) » [HYSIRY](#) » Hysiry Q2SCWM smart Bulb User Manual 

### Contents

- 1 Hysiry Q2SCWM smart Bulb
- 2 Features of smart bulb light
- 3 Specifications
- 4 Easy installation
  - 4.1 Step 1
  - 4.2 Step 2
  - 4.3 Step 3
- 5 How to use Amazon Echo to control your Smart devices?
  - 5.1 Step 1
  - 5.2 Step 2
  - 5.3 Step 3
  - 5.4 Step 4
  - 5.5 Step 5
- 6 FCC Statement
  - 6.1 RF Exposure Information
- 7 Documents / Resources
  - 7.1 References
- 8 Related Posts

# Hysiry

**Hysiry Q2SCWM smart Bulb**



## Features of smart bulb light

1. Controlled by mobile phones from anywhere at anytime
2. Free app smart life supports Android and iOS systems, simple to use
3. Timer for schedules setting
4. Energy monitoring for energy saving plan
5. Voice control: works with Amazon Alexa and Google home
6. Wide voltage suitable for AC100~240V 50Hz/60Hz
7. Connection: Wi-Fi, 3G, 4G

## Specifications

- Rated power: 5W
- Input voltage: AC100~240V 50Hz/60Hz
- Lumen: 300lmLight source: LED
- CRI:  $\geq 80$ Ra
- Switch life: 15000 times
- Power factor: 0.
- Color temperature: 2700-6500K+RGB
- Working temperature:-20 to 40°C
- Base: E12
- Connection: Wi-Fi, BT

## Easy installation

There are 3 steps to start your smart life. Scan the QR code to download the APP, install the lamp and use the APP to control the Wi-Fi bulb.If you do not linked, it just a normal bulb, but once you linked it to your Amazon

Echo/Goole home, you can control it with voice, Turns on and off the light, and the changing of the color which is very interesting. Use your phone to scan the QR code below or search “smart life” in application market to download and install the App.

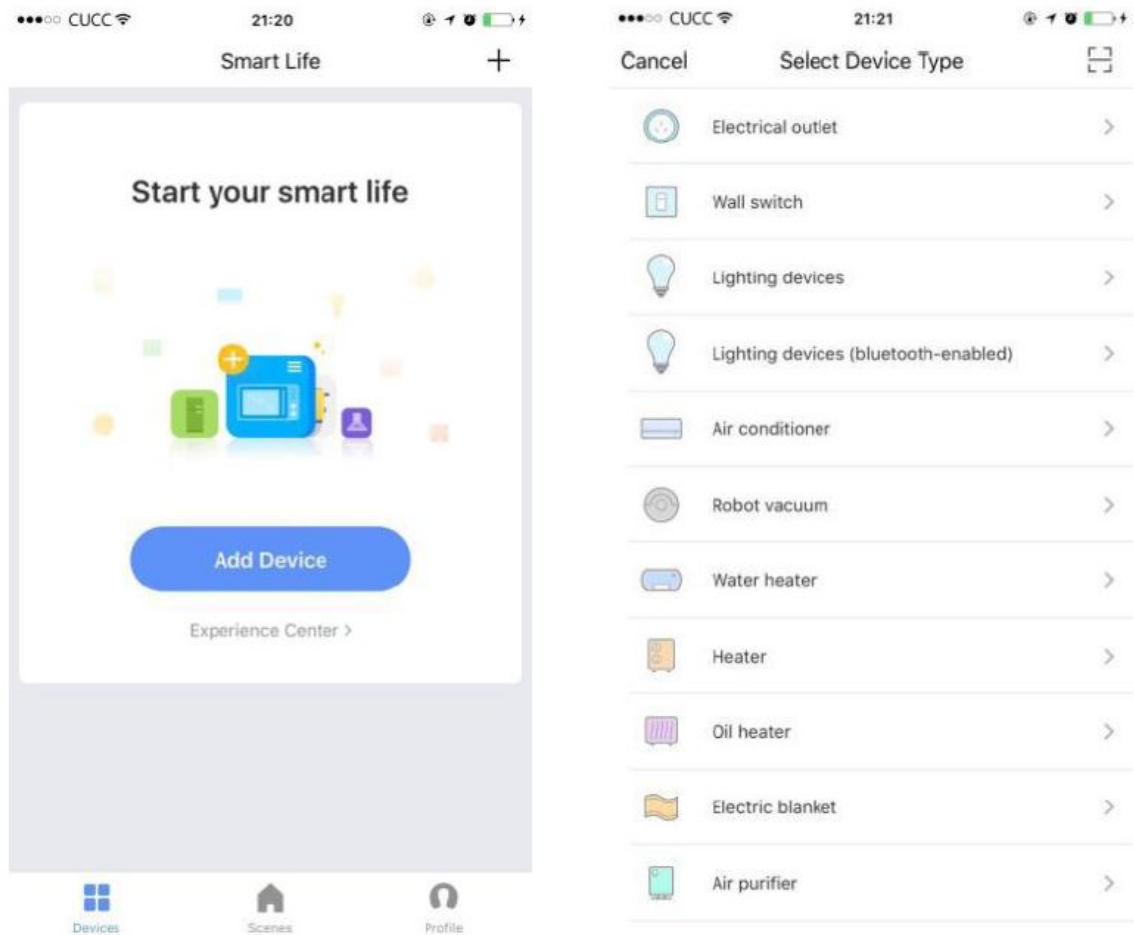


## Step 1

Registration and login smart life APP. If you don't have the account of Smart life APP register an account or sign in with cellphone number + verification code. This page describes the Registration process.

- Tap Register in the upper right.
- The system automatically determines your country area. You can also select your country code by yourself. Enter the cellphone number/E-mail and tap Next
- If you enter the mobile cellphone number enter the verification code in the message and enter the password tap Confirm to finish your registration.
- If you enter the E-mail enter the password tap Confirm to finish your registration.

Four sequential screenshots of the Smart Life app registration process on a mobile phone. The first screenshot shows the 'Login' and 'Register' tabs, with the 'Register' tab selected. It has fields for 'Country / Region' (Armenia +374), 'Mobile number/E-mail', and 'Password', followed by a 'Login' button and links for 'Sign in with SMS verification' and 'Forgot password'. The second screenshot shows the 'Register' screen with a 'Back' button, 'Armenia +374' selected, and a 'Next' button. The third screenshot shows the 'Register' screen with a 'Back' button, a message 'Verification code is sent to your phone: +86 15700085876', a 'Verification Code' field with a 'resend (59)' button, a 'Please input password' field, and a 'Confirm' button. The fourth screenshot shows the 'Register' screen with a 'Back' button, a 'Please input password' field, and a 'Confirm' button.

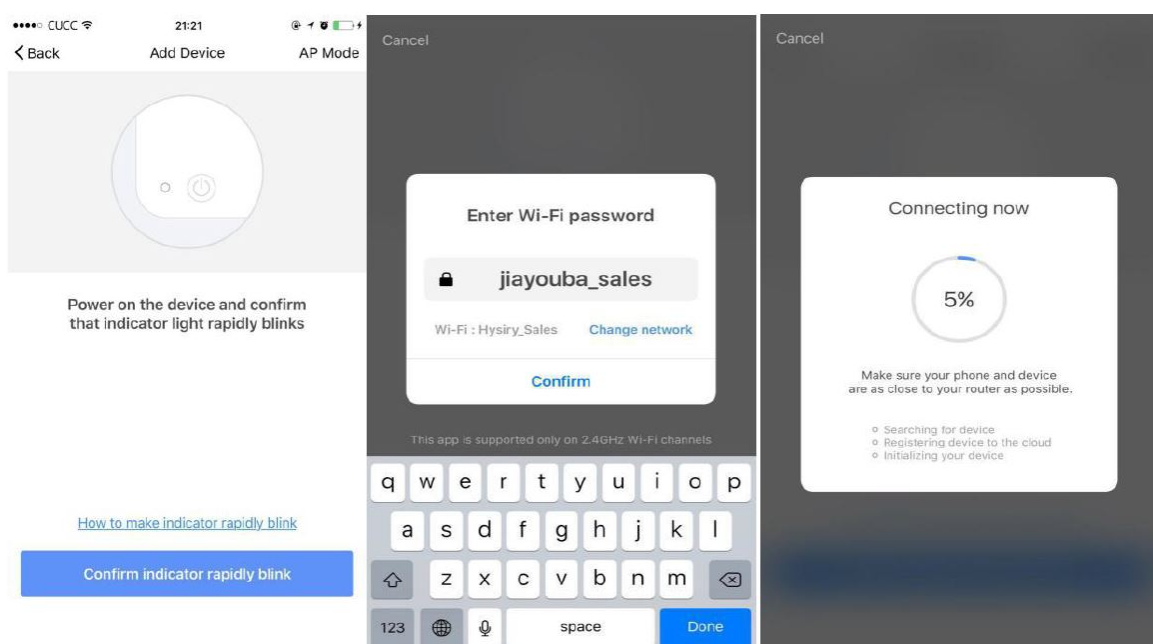


## Step 2

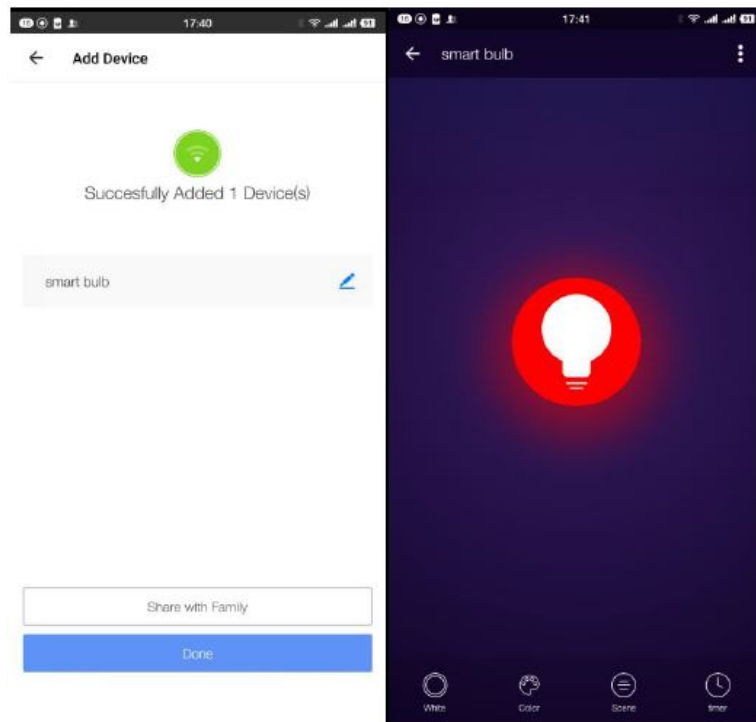
Connect with the power supply, Make sure the WiFi smart bulb is standby(the white light flash rapidly. Select confirm indicator rapidly blinks.

## Step 3

Enter your WiFi password for your phone and click Confirm to enter the page of the search device.



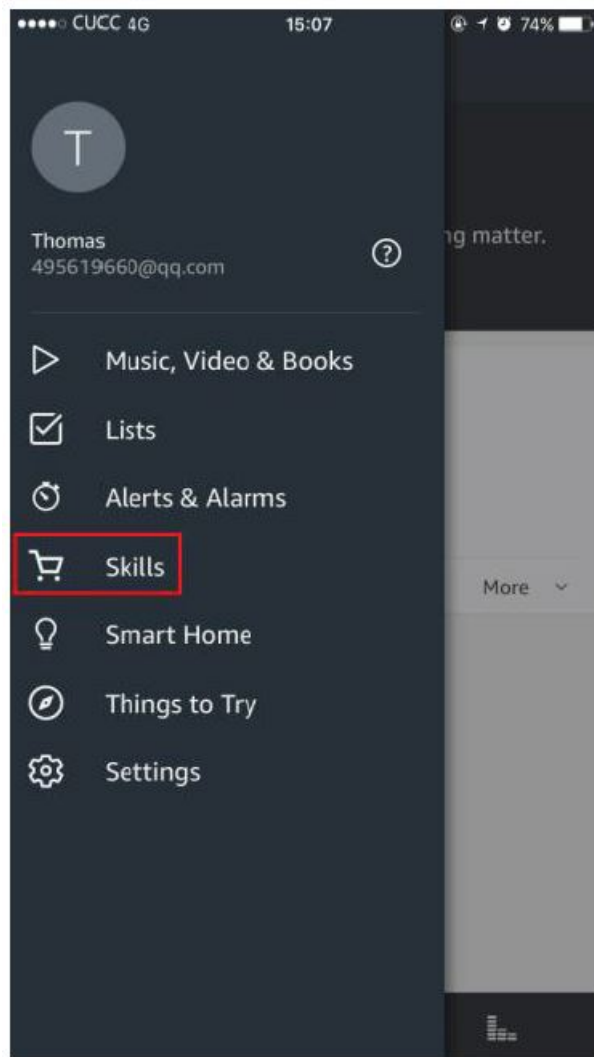
Enter the device page then complete the configuration.



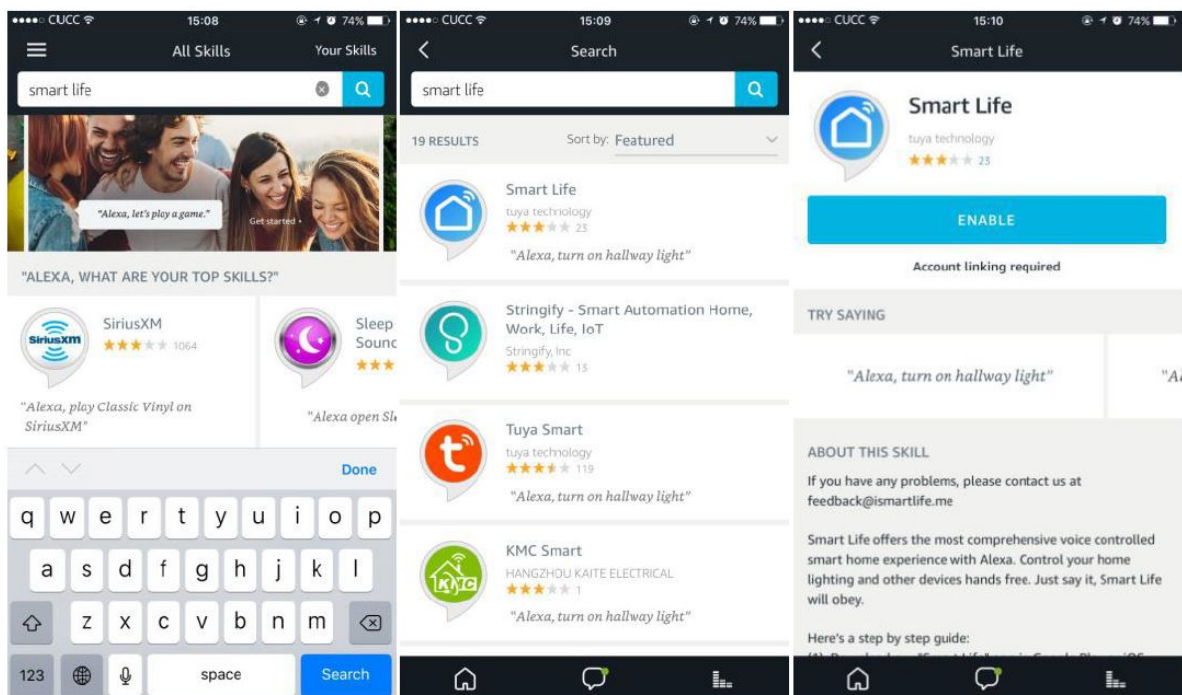
## How to use Amazon Echo to control your Smart devices?

### Step 1

Open the Amazon Alexa APP, then find the Skills button on the menu. Press it.

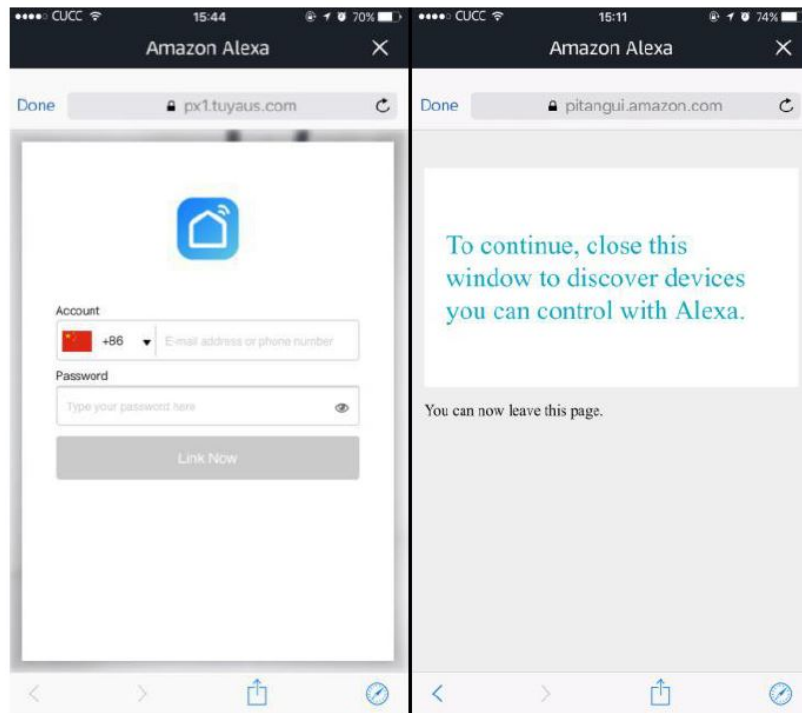


## Step 2



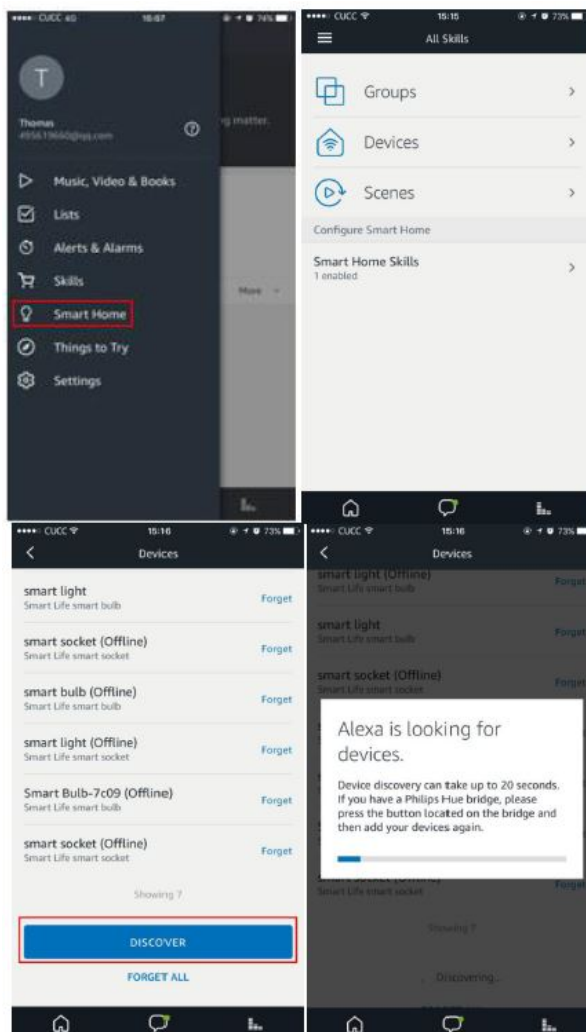
Search the Smart life and choose the first one, then Enable it.

## Step 3



Select your country code and Enter your “Smart life” APP Account and Password, then press the Link Now button. When the Account success to login press the Done button.

#### Step 4



Back to the menu, and press the Smart home button, then choose the “Devices, then press the Discover button.

## Step 5

Now you can use your Alexa to control your Smart devices enjoy yourself.

## FCC Statement

This equipment has been tested and found to comply with the limits for a Class B digital device, pursuant to the FCC Rules. These limits are designed to provide reasonable protection against harmful interference in a residential installation. This equipment generates, uses and can radiate radio frequency energy and, if not installed and used in accordance with the instructions, may cause harmful interference to radio communications. However, there is no guarantee that interference will not occur in a particular installation. If this equipment does cause harmful interference to radio or television reception, which can be determined by turning the equipment off and on, the user is encouraged to try to correct the interference by one or more of the following measures

- Reorient or relocate the receiving antenna.
- Increase the separation between the equipment and receiver.
- Connect the equipment into an outlet on a circuit different from that to which the receiver is connected.
- Consult the dealer or an experienced radio/TV technician for help.

- Caution



Any changes or modifications to this device not explicitly approved by manufacturer could void your authority to operate this equipment.

- This device complies with part 15 of the FCC Rules. Operation is subject to the following two conditions. This device may not cause harmful interference, and (2) this device must accept any interference received, including interference that may cause undesired operation.

## RF Exposure Information

The device has been evaluated to meet general RF exposure requirement. The device can be used in portable exposure condition without restriction. To maintain compliance with FCC's RF Exposure guidelines, This equipment should be installed and operated with minimum distance between 20cm the radiator your body. Use only the supplied antenna.

## Documents / Resources

	<a href="#">Hysiry Q2SCWM smart Bulb [pdf] User Manual</a> Q2SCWM smart Bulb, smart Bulb
	<a href="#">HYSIRY Q2SCWM Smart Bulb [pdf] Instructions</a> Q2SCWM, 2AKBP-Q2SCWM, 2AKBPQ2SCWM, Q2SCWM Smart Bulb, Q2SCWM, Smart Bulb

## References

- [3c\\_ce\\_ul\\_fcc\\_-](#)

Manuals+.