



HySecurity SlideDriver II XTREME Drive Slide Gate Operator Instruction Manual

[Home](#) » [HySecurity](#) » HySecurity SlideDriver II XTREME Drive Slide Gate Operator Instruction Manual 

HySecurity SlideDriver II XTREME Drive Slide Gate Operator



Contents

- 1 PARTS
- 2 HARDWARE
- 3 (OPTIONAL) INSTALLATION KIT MX002750
- 4 TOOLS
- 5 SITE PLANNING AND INSTALLATION TIPS
- 6 INSTALL THE XTREMEDRIVE SYSTEM
 - 6.1 PREPARATION
- 7 MARK, DRILL, AND COUNTERSINK MOUNTING HOLES
 - 7.1 INSTALL THE XTREMEDRIVE RACK
 - 7.2 INSTALL THE XTREMEDRIVE WHEEL
 - 7.3 COMPLETE XTREMEDRIVE SYSTEM INSTALLATION
- 8 Documents / Resources
- 9 Related Posts

PARTS

- XtremeDrive wheel
- XtremeDrive rack

HARDWARE

- 1/4-20 x 5/8 in flat head screw
- 1/4-20 attachment nut

(OPTIONAL) INSTALLATION KIT MX002750

- Transfer punch
- Drill jig
- Countersink drill bit

TOOLS

- Hacksaw
- Cordless drill
- 1/4 in drill bit
- Phillips-head screwdriver
- Hammer
- Channel locks
- Permanent marker
- Blue Loctite

SITE PLANNING AND INSTALLATION TIPS

- At retrofit sites, the rack can be installed on the flanged drive rail or the standard grooved drive rail.
- The rack is 0.4 in (10 mm) thick and mounts beneath the drive rail. You will need to raise the drive rail 0.25 to 0.5 in (6 to 13 mm) along the gate uprights and the entire drive rail path, especially if the operator has 8 in (200 mm) wheels.
- Replace the bottom drive wheel with the XtremeDrive wheel. The XtremeDrive wheel is not used along the top surface of drive rail.
- Dual limit sensor – check dual limit sensor position and make any necessary adjustments.
- Limit flag spacers – optional spacers available to increase clearance between limit sensors and XtremeDrive rack.

NOTICE

The drive rail must not sag in the center or it will rub against dual limit sensors.



Turn off power to the gate operator and take the necessary precautions to avoid electrical shock.

INSTALL THE XTREMEDRIVE SYSTEM

PREPARATION

1. Remove the cover.
2. Set the power switch to OFF.
3. Unclamp the drive wheels.

NOTICE Ensure proper XtremeDrive rack alignment throughout the installation process. Improper alignment

could require drive rail replacement or cause poor XtremeDrive performance.

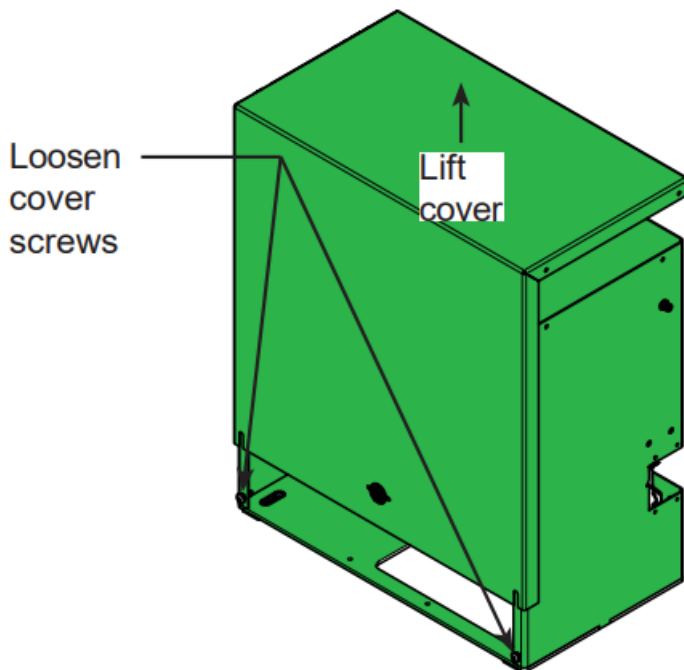


Figure 1. Remove the Cover

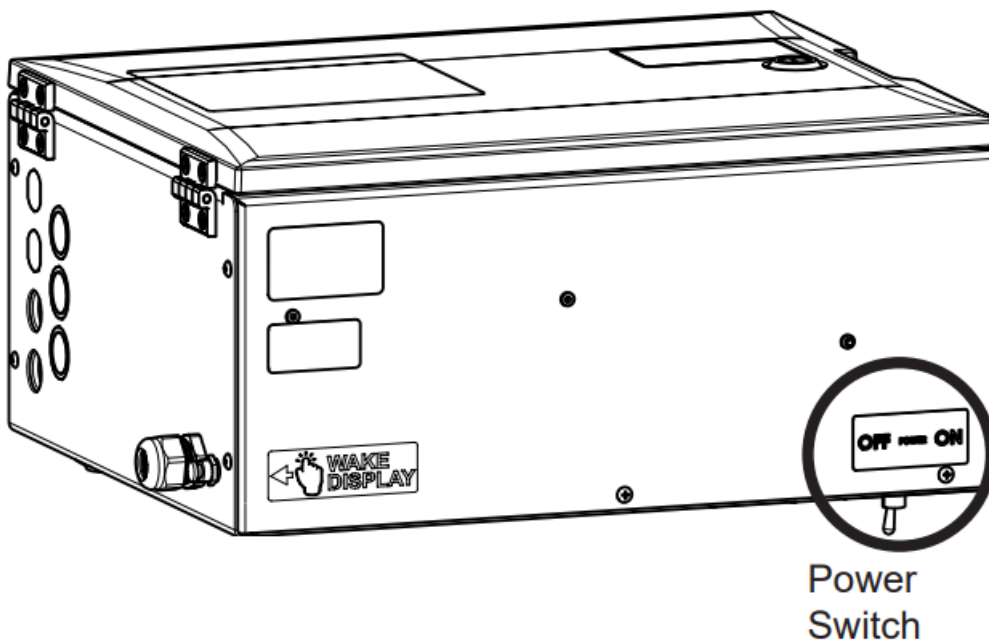


Figure 2. Set Power Switch to OFF

MARK, DRILL, AND COUNTERSINK MOUNTING HOLES

Note: Mark holes for one section of drive rack at a time.

4. Mark the mounting holes.

To use a piece of XtremeDrive rack:

- a. On top of the drive rail, align the XtremeDrive rack 3/8 in (10 mm) from the end of the drive rail (in the open/close direction) and aligned with the edge of the flat of the drive rail toward the operator.
- b. Gently clamp the XtremeDrive rack in place and mark the hole centers.
- c. Remove the XtremeDrive rack
- d. Drill the marked hole locations with a 1/4 in drill bit.

To use optional Installation Kit (MX002750):

- a. On top of the drive rail, align the drill jig 1 in (25 mm) from one end of the drive rail (in the open/ close direction) with the pins against the edge of the drive rail on the drive track side.
 - b. Clamp the drill jig onto the rail and use the center/ transfer punch to mark the hole centers.
 - c. Drill the marked hole locations with a ¼ in drill bit.
 - d. Remove the drill jig.
5. Countersink each hole. Make sure the countersink is deep enough for the screw heads to be flush with the drive rail.

Note: Installation Kit (MX002750) includes the appropriate countersink bit.

INSTALL THE XTREMEDRIVE RACK

6. Align the first piece of XtremeDrive rack to the first set of mounting holes with the rack under the drive rail and the rack teeth pointing down.

NOTICE

Make sure that the XtremeDrive rack does not crash into the dual limit sensor.

7. Clamp the XtremeDrive rack in position.
8. Add a drop of blue thread locker to each screw before tightening the screw, rail, XtremeDrive rack, and nut.
9. Install the first two screws and tighten with a Phillipshead screwdriver.
10. When necessary, leave the third mounting hole open and use a shoulder bolt to align the next set of XtremeDrive rack mounting holes.
11. Repeat steps 4 through 10 to install XtremeDrive rack across the drive rail.
12. At the end of the drive rail, make sure the last mounting hole is fastened and flush cut any XtremeDrive rack overhang to the drive rail.

INSTALL THE XTREMEDRIVE WHEEL

13. Remove the pivot arms.
14. Remove the AdvanceDrive wheel from the lower pivot arm.
15. Install the XtremeDrive wheel.

COMPLETE XTREMEDRIVE SYSTEM INSTALLATION

16. Install the pivot arms.
17. Clamp the drive wheels.
18. Adjust the compression spring to 2 in (50 mm).
19. Set the power switch to ON.
20. Test cycle the gate operator.
21. Install the cover.

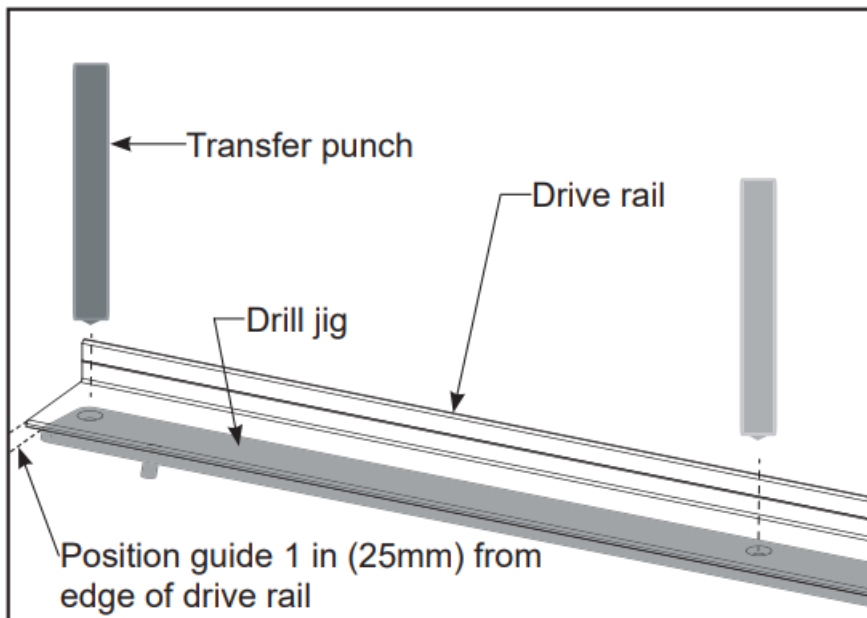


Figure 3. Mark the Mounting Holes

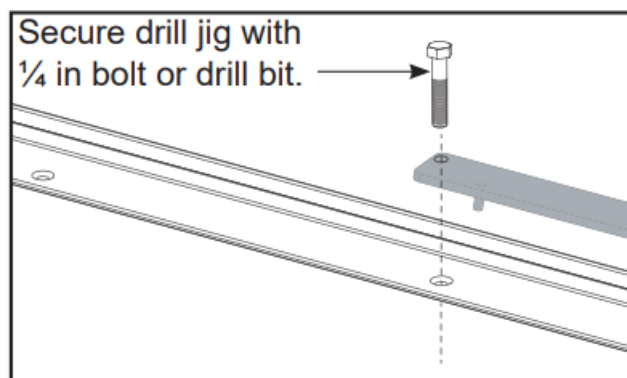


Figure 4. Align the Next Set of Mounting Holes

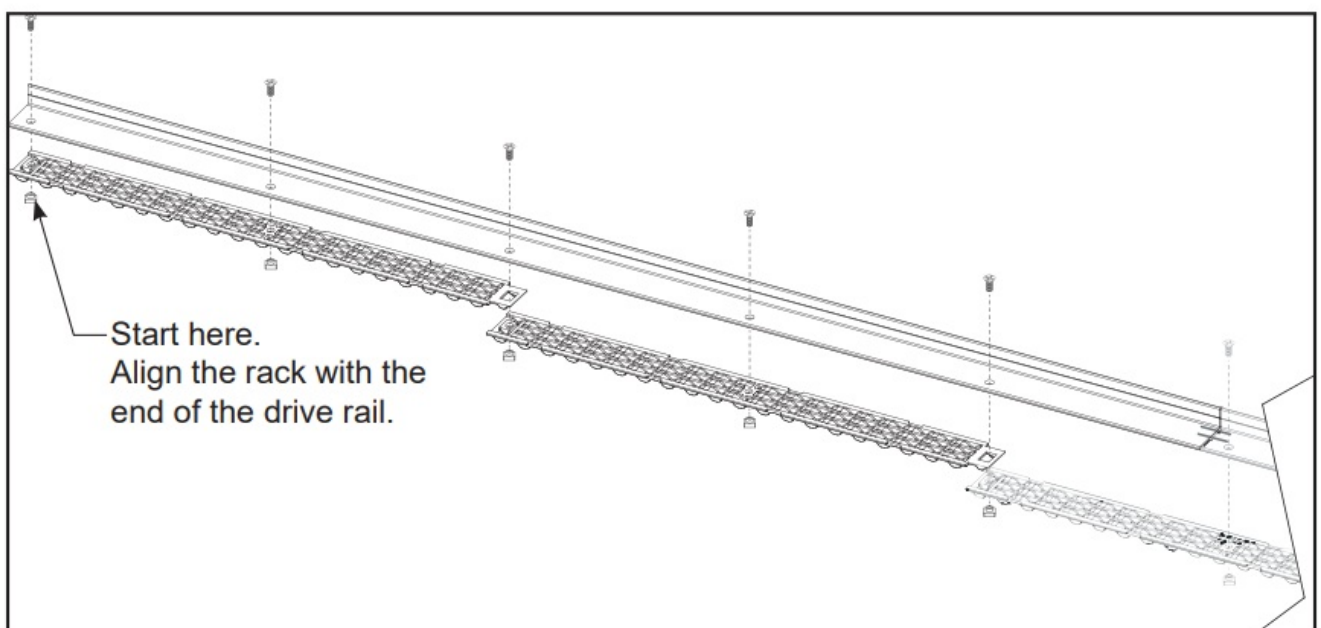


Figure 5. Mount the XtremeDrive Rack

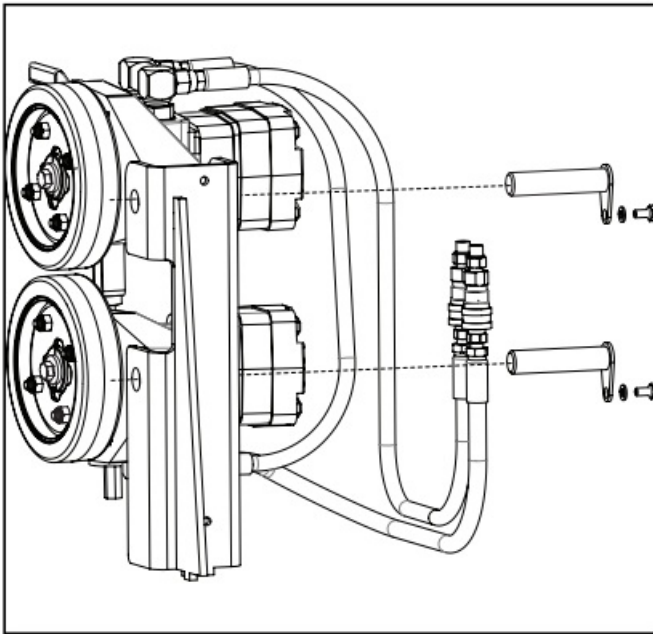


Figure 6. Pivot Arm Mounting Bolts

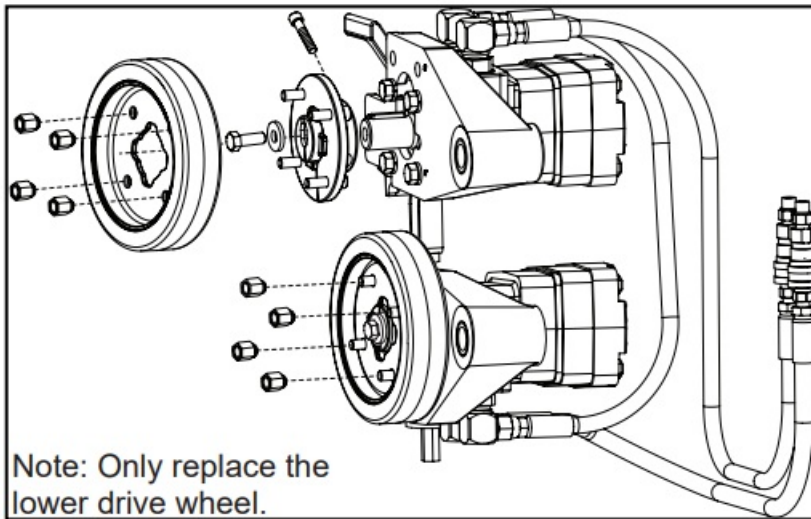


Figure 7. Mount the Drive Wheels

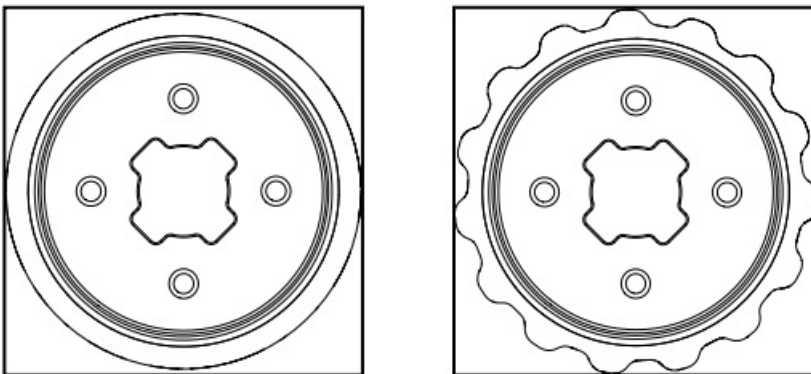


Figure 8. AdvancdDrive and XtremeDrive Wheels

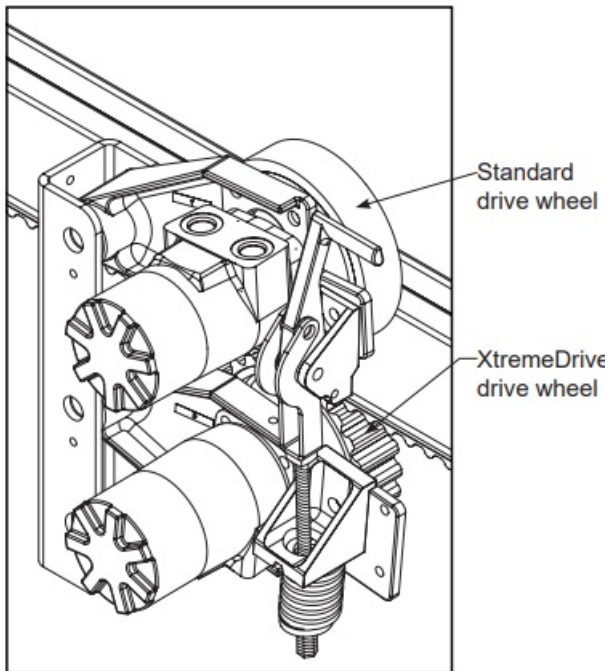
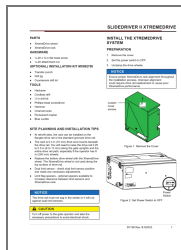


Figure 9. Assembled XtremeDrive System

D1156 Rev. B ©2023

support.hysecurity.com

Documents / Resources



[HySecurity SlideDriver II XTREME Drive Slide Gate Operator](#) [pdf] Instruction Manual
 SlideDriver II XTREME Drive Slide Gate Operator, SlideDriver II, XTREME Drive Slide Gate Operator, Slide Gate Operator, Gate Operator, Operator