



# HySecurity MX001636 SlideDriver 40 Slide Gate Operator Instruction Manual

[Home](#) » [HySecurity](#) » HySecurity MX001636 SlideDriver 40 Slide Gate Operator Instruction Manual 



## Contents

- [1 MX001636 SlideDriver 40 Slide Gate Operator](#)
- [2 Technical Instructions](#)
- [3 INSTRUCTIONS:](#)
- [4 Documents / Resources](#)
  - [4.1 References](#)

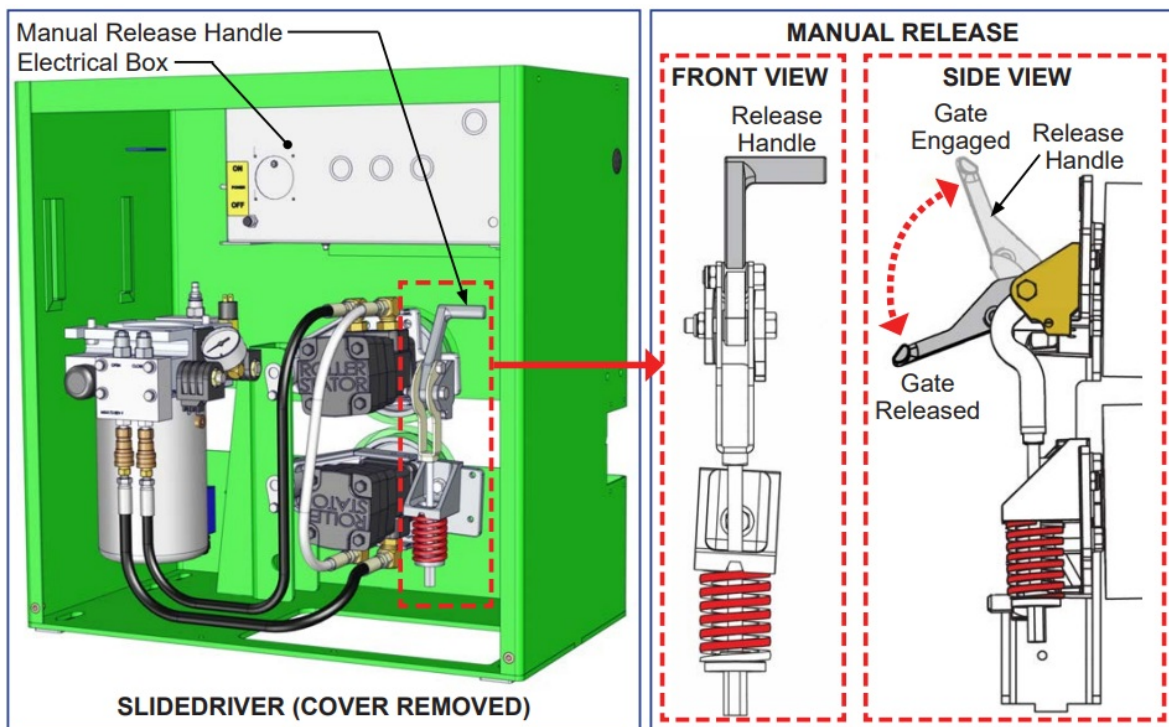
**MX001636 SlideDriver 40 Slide Gate Operator**



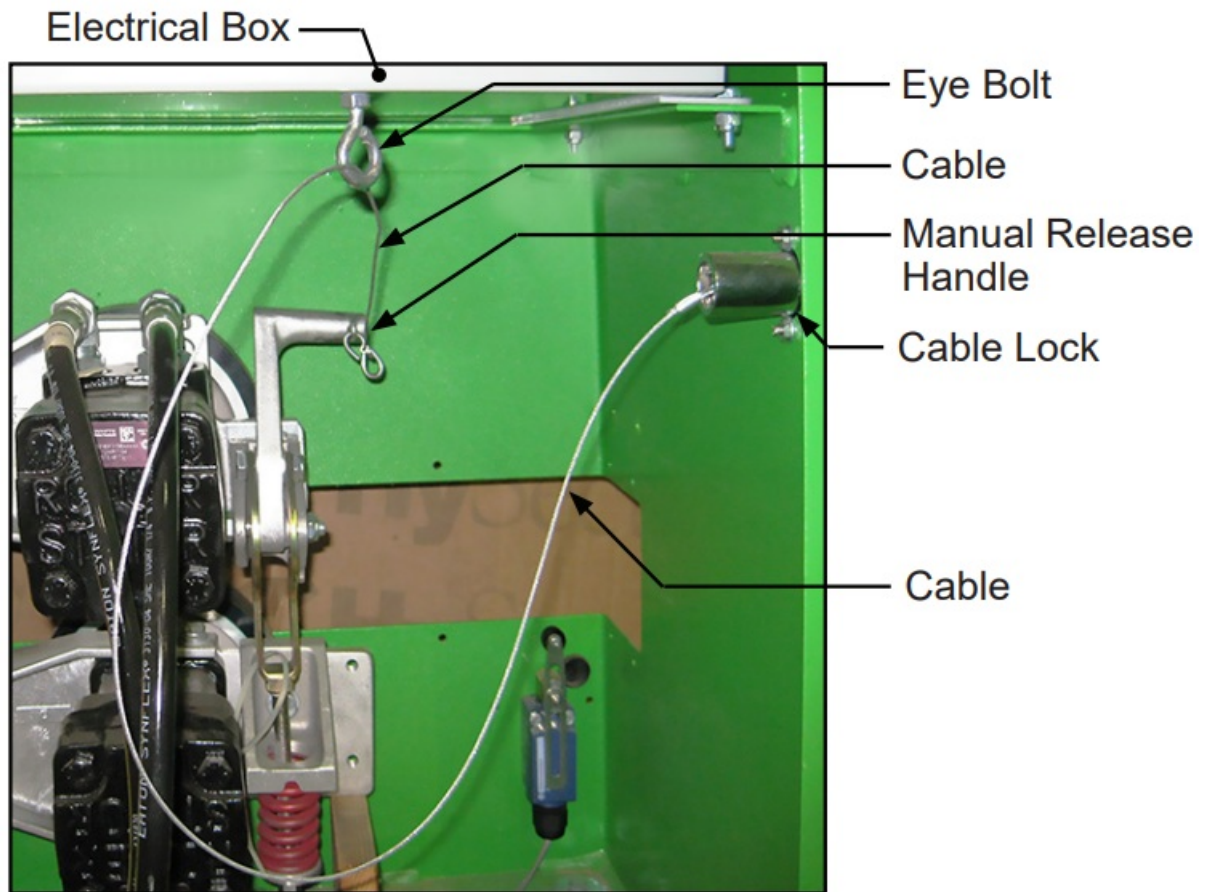
## Technical Instructions

### SlideDriver: 222 Cable Release Installation Instructions

These instructions are for installing the keyed 222 cable release to SlideDriver operators to allow operating a manual release without having to open the unit. See FIG-1 for ID and location of manual release components and FIG-2 for a photo of the installed 222 cable. Instructions start on the next page.



SlideDriver Manual Release ID and Location



Installed 222 Cable Release

## INSTRUCTIONS:

1. Disconnect electrical power downstream of the SlideDriver.

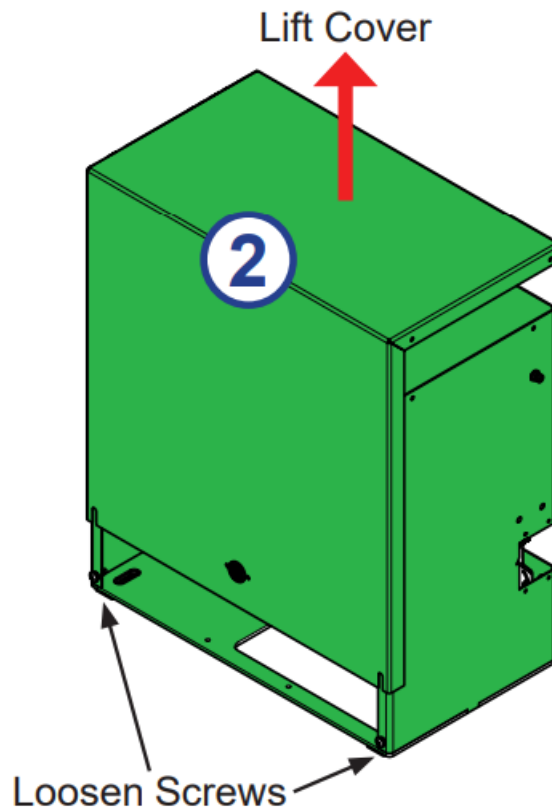


**DANGER!**

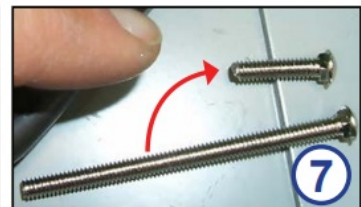
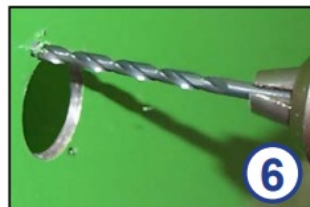
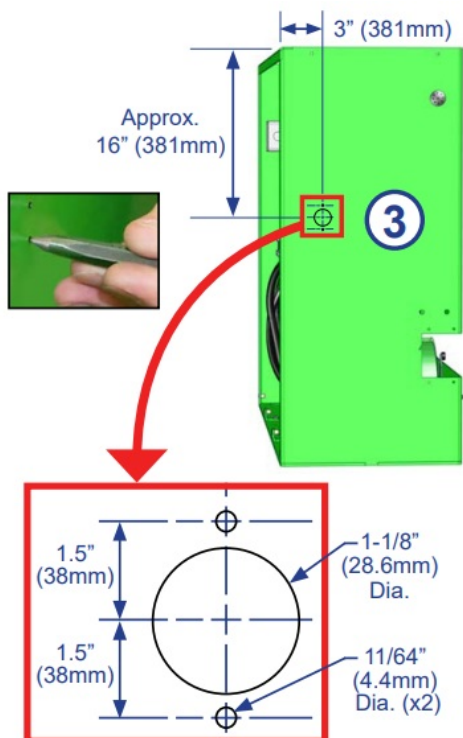
To reduce risk of severe injury and death follow all safety procedures!

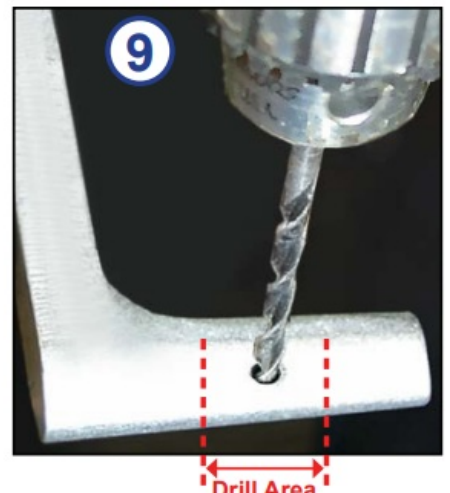
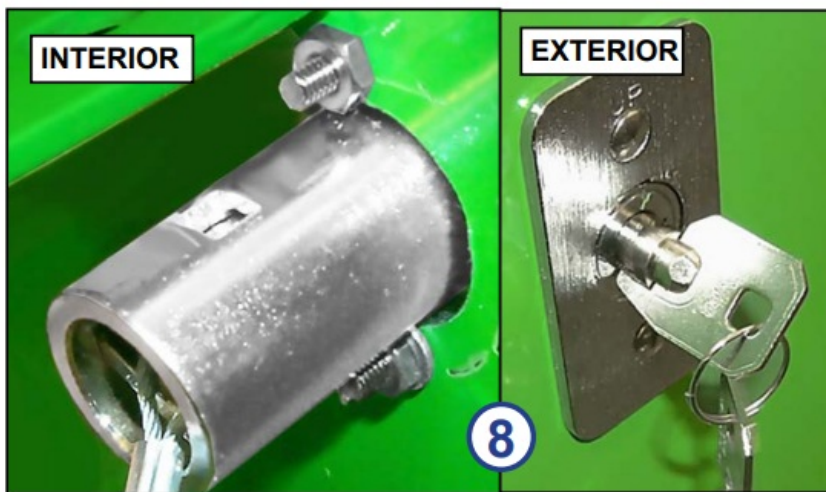
Remove AC electrical power downstream of the unit before attempting to continue these instructions!

2. Remove SlideDriver cover.
3. Refer to Step 3 image (below) for dimensions and location, mark the three hole locations, then use a punch to score holes.
4. Use 1-1/8" drill bore to open hole at the center of the 3 marked hole locations.

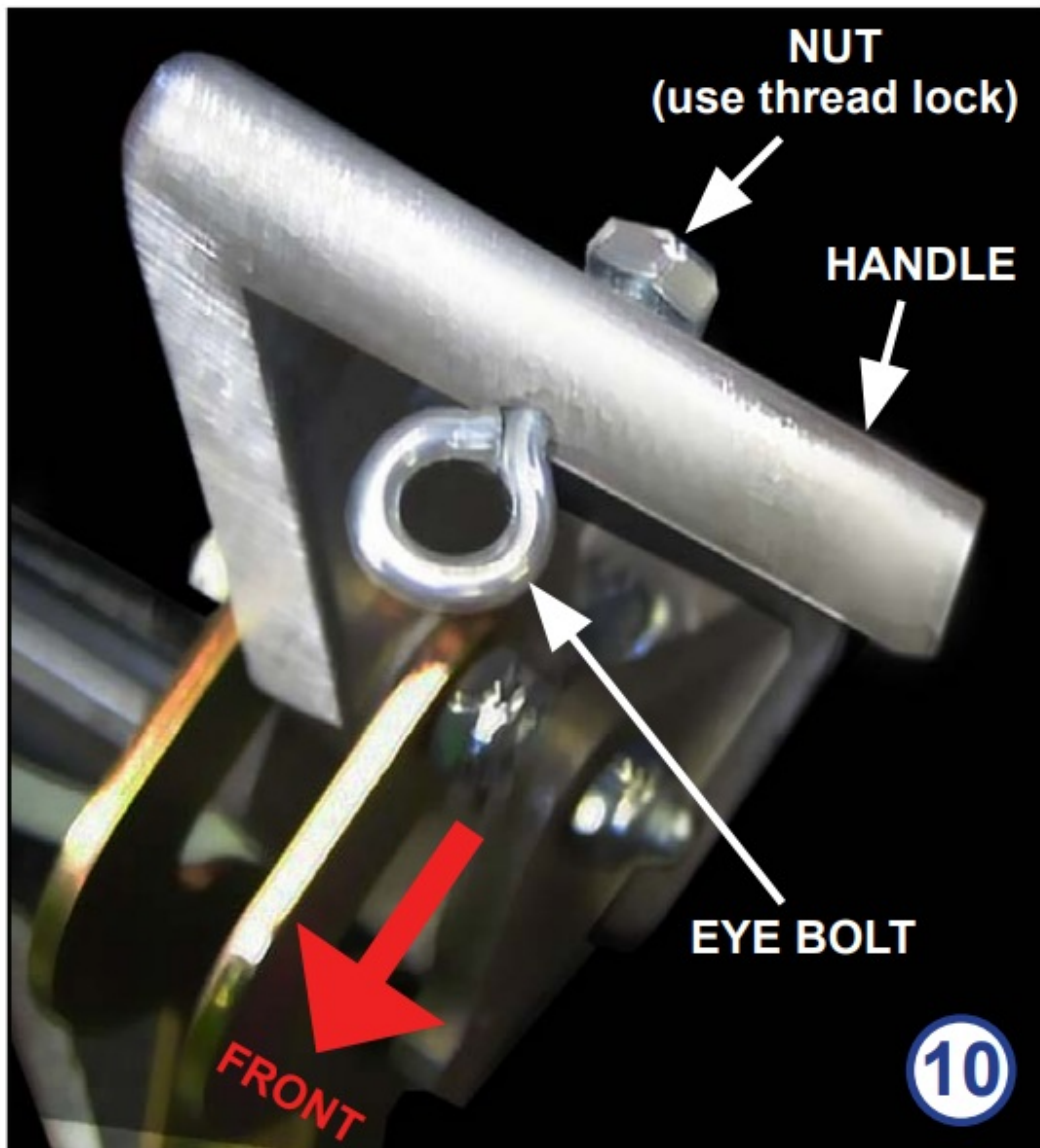


5. Use round file or de-burr tool to de-burr hole.
6. Drill  $11/64$ " hole at top and bottom at marked and punched locations.
7. Trim the two carriage bolts to  $5/8$ ". Verify nuts thread onto end of shortened bolts. Use thread die or a nut if necessary. Bolts and nuts are part of the lock kit (P/N MX001526).

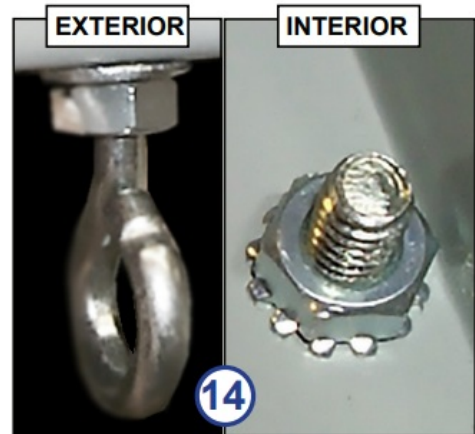
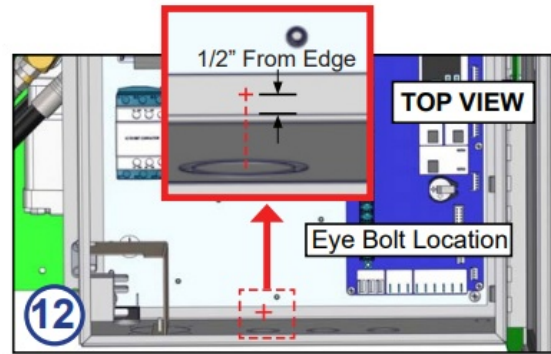
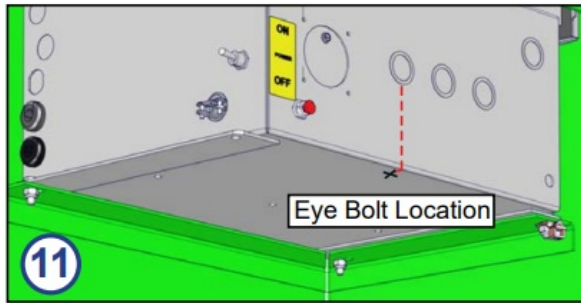




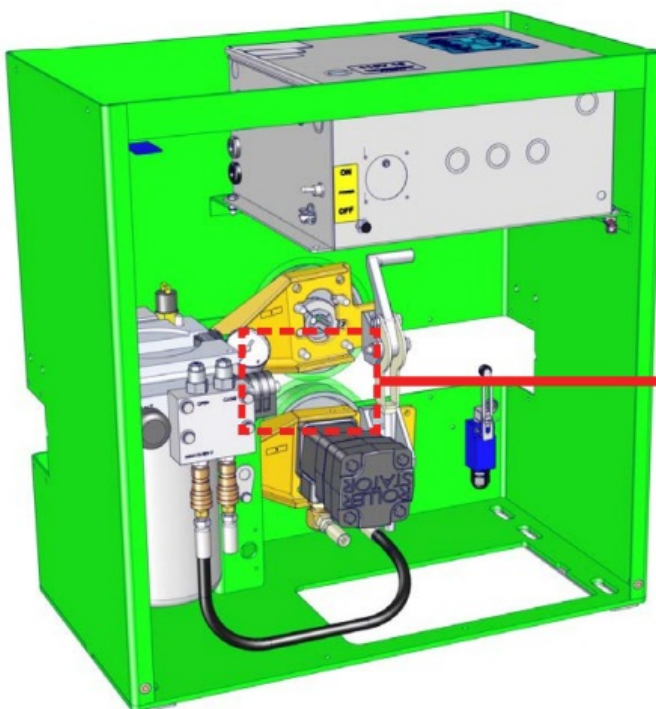
8. Attach lock assembly (P/N MX001526) to chassis using trimmed screws and tighten both internal nuts to affix to chassis.
9. Drill 11/64th" hole through drive toggle handle, P/N MX000431.
10. Install eye bolt into hole in handle (facing toward front) and affix with nut and thread lock.



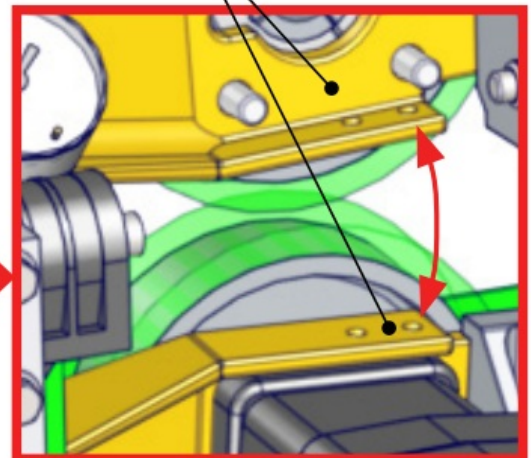
11. Mark hole on bottom of electrical box. Hole is directly underneath 3rd knock-out hole from On/Off switch corner.
12. Mark the location of the hole center 1/2" from the edge of the box.



13. Drill 9/32" (0.281") diameter hole.
14. Attach eyebolt with lock nut (P/N MX001508) to electrical box.
15. Attach 1/4-20 x 0.5" hex bolts (P/N MX001443) with lock washers (P/N MX000207) to top and bottom wheel mount brackets.
16. Place spring (P/N MX001523) over fastener heads.



x2 Wheel Mount Brackets (colored yellow for clarity).

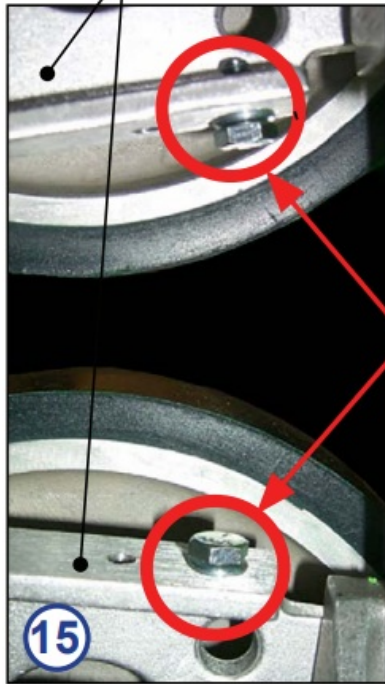


## NOTICE

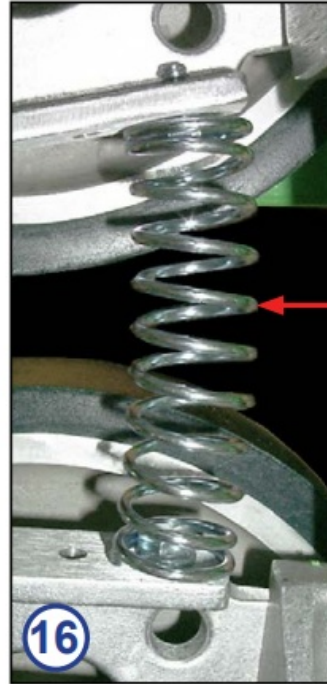
Upper motor is removed in illustration to clarify location of Wheel Mount Brackets.

SlideDriver Wheel Mount Bracket Locations

Wheel Mount Brackets

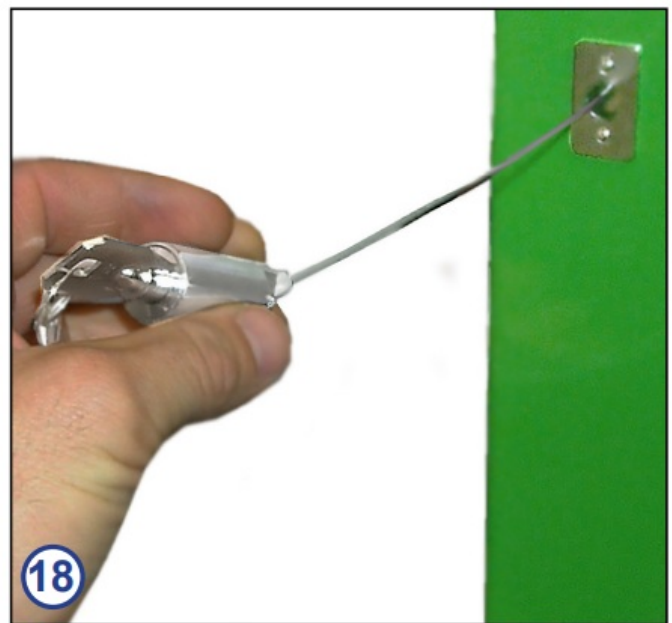
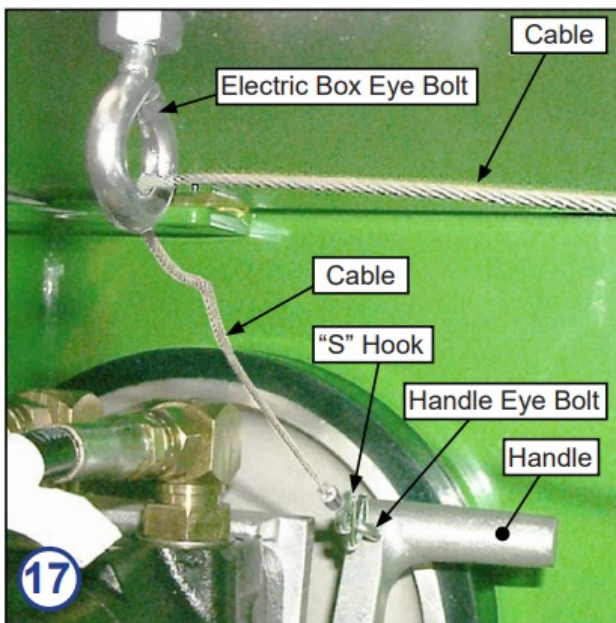


1/4-20 x 0.5"  
Hex Bolt  
(P/N MX001443)  
Lock Washer  
(P/N MX000207)



Spring  
(P/N MX001523)

17. Cable from the lock first threads through electric box eyebolt, then loops to the handle, where it is attached by closing the "S" hook onto the handle eye bolt.
18. Verify that pulling on the cable unlocks the drive clamp assembly.



——— END ———

**Contact Information:** Visit <https://support.hysecurity.com/hc/en-us> for installation manuals, replacement part instructions, part diagrams and more. Qualified HySecurity distributors are experienced and trained to assist in resolving installation problems. For the name of a qualified distributor near you, call HySecurity at 800-321-9947. \*Before contacting your distributor or HySecurity Technical Support, obtain the serial number of your operator.

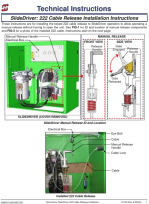


[support.hysecurity.com](https://support.hysecurity.com)

Instructions: SlideDriver 222 Cable Release Installation  
D1165 Rev. A ©2023

---

## Documents / Resources

	<p><a href="#">HySecurity MX001636 SlideDriver 40 Slide Gate Operator</a> [pdf] Instruction Manual MX001636, MX001526, MX000431, MX001636 SlideDriver 40 Slide Gate Operator, SlideDriver 40 Slide Gate Operator, 40 Slide Gate Operator, Gate Operator, Operator</p>
---	---

## References

- [User Manual](#)