



# HyperX Cloud II Wireless User Manual

[Home](#) » [HYPERX](#) » HyperX Cloud II Wireless User Manual 

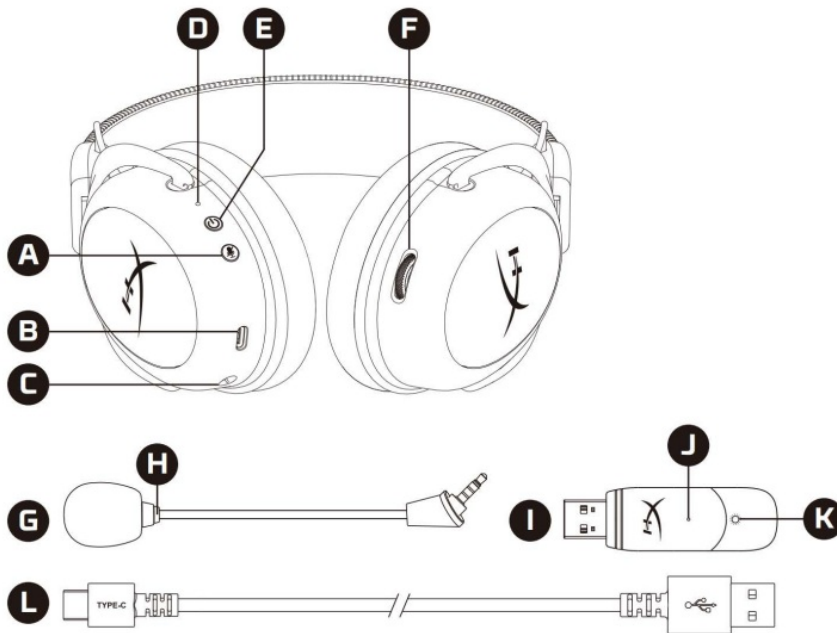
## HyperX Cloud II Wireless User Manual



### Contents

- [1 Overview](#)
- [2 Specifications](#)
- [3 Setting up with PC](#)
- [4 Setting up with PlayStation 4](#)
- [5 Controls](#)
- [6 Charging the Headset](#)
- [7 Wired charging](#)
- [8 HyperX NGENUITY Software](#)
- [9 Manually Pairing the Headset and USB Adapter](#)
- [10 Documents / Resources](#)
  - [10.1 References](#)
- [11 Related Posts](#)

## Overview



- **A.** Mic mute / mic monitoring button
- **B.** USB charge port
- **C.** Microphone port
- **D.** Status LED
- **E.** Power / 7.1 Surround Sound button
- **F.** Volume wheel
- **G.** Detachable microphone
- **H.** Microphone mute LED
- **I.** USB adapter
- **J.** Wireless pairing pin hole
- **K.** Wireless status LED
- **L.** USB charge cable

## Specifications

### Headphone

- **river:** Dynamic, 53mm with neodymium magnets
- **Type:** Circumaural, Closed back
- **Frequency response:** 15Hz–20kHz
- **Impedance:** 60  $\Omega$
- **Sound pressure level:** 104dB SPL/mW at 1kHz
- **T.H.D.:**  $\leq 1\%$
- **Weight:** 300g
- **Weight with mic:** 309g
- **Cable length and type:** USB charge cable (0.5m)

## Microphone

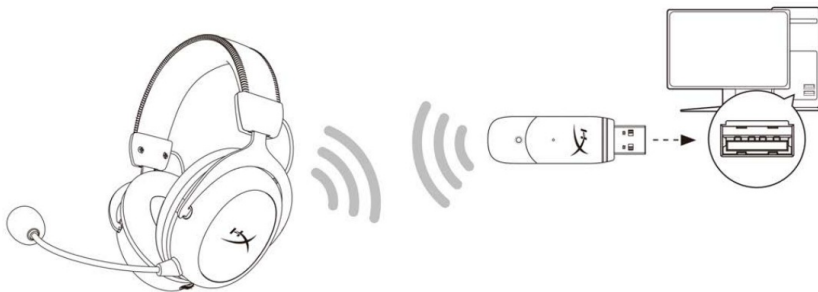
- **Element:** Electret condenser microphone
- **Polar pattern:** Bi-directional, Noise-cancelling
- **Frequency response:** 50Hz-6.8kHz
- **Sensitivity:** -20dBV (1V/Pa at 1kHz)

**Battery life\*** 30 hours

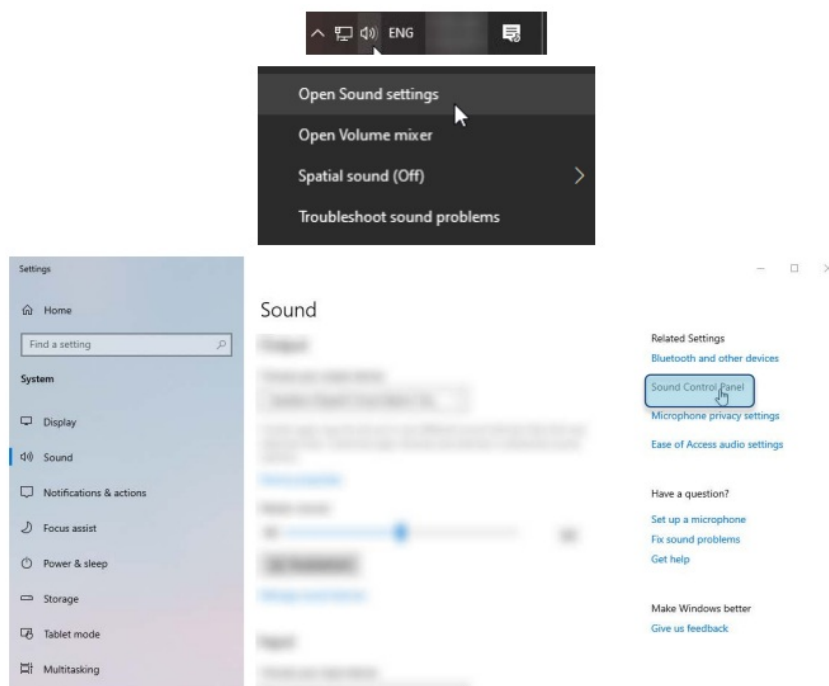
**Wireless Range\*\*** 2.4 GHz Up to 20 meters

\*Tested at 50% headphone volume. Battery life varies depending upon the usage. \*\*Wireless range may vary due to environmental conditions.

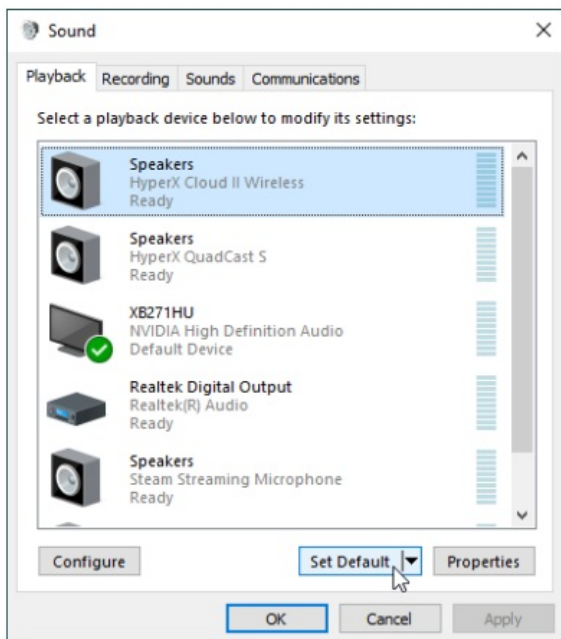
## Setting up with PC



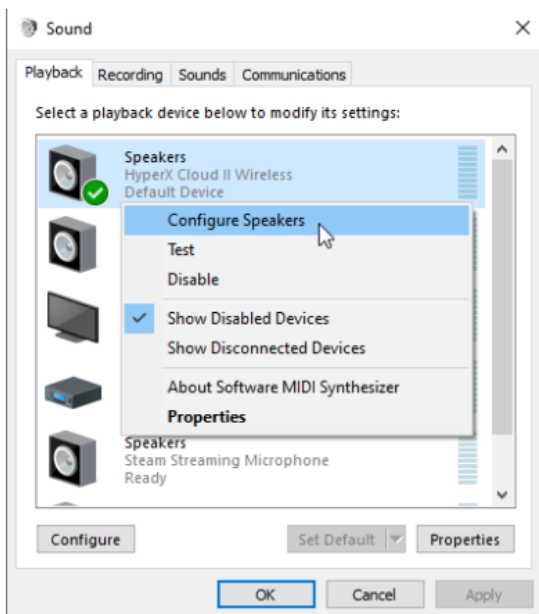
1. Connect the wireless USB adapter to the PC.
2. Power on the headset.
3. Right click speaker icon > Select Open Sound settings > Select Sound Control Panel



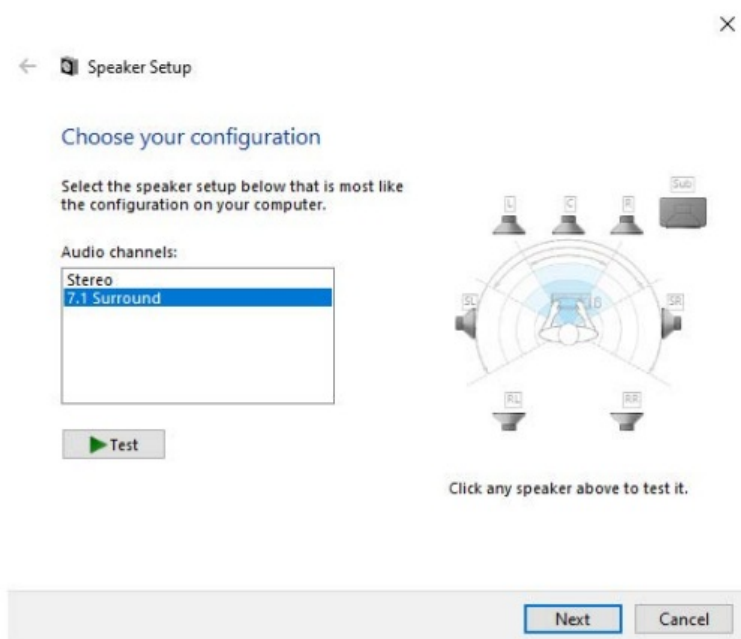
4. Under the Playback tab, click on “HyperX Cloud II Wireless” and click on the Set Default button



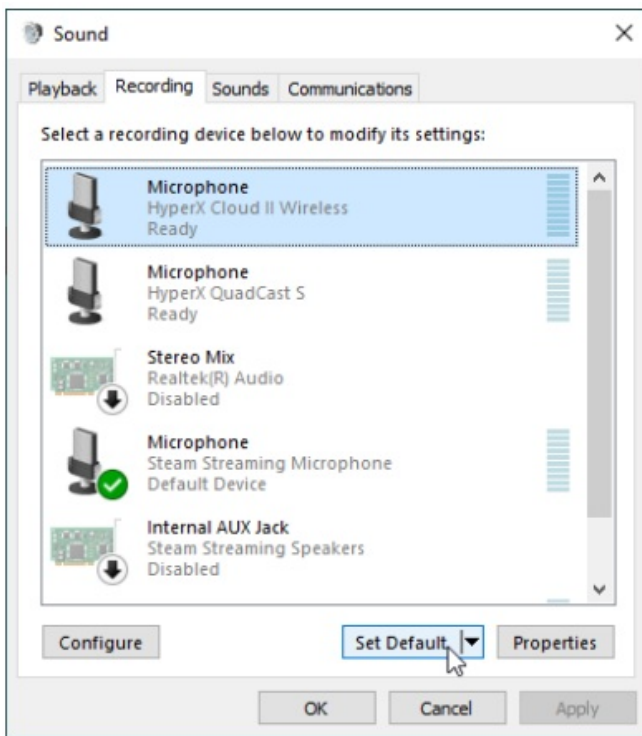
5. Right click on “HyperX Cloud II Wireless” and click on Configure Speakers.



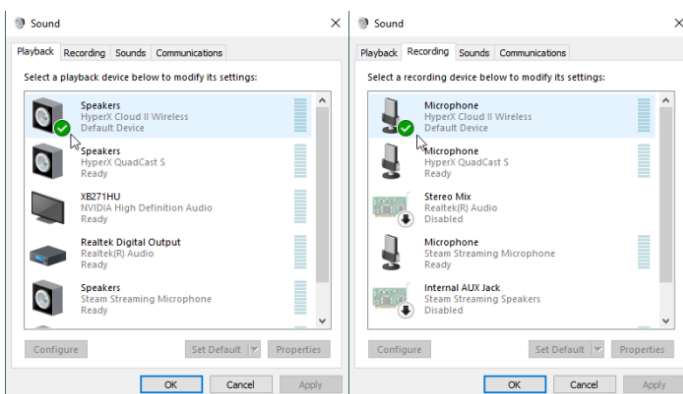
6. Select 7.1 Surround as the speaker configuration and click next.



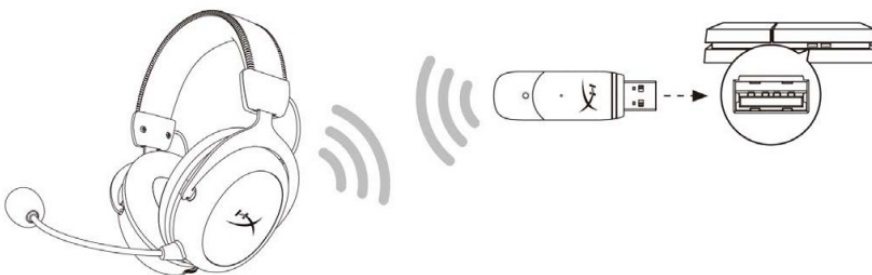
7. Under the Recording tab, click on “HyperX Cloud II Wireless” and click on the Set Default button.



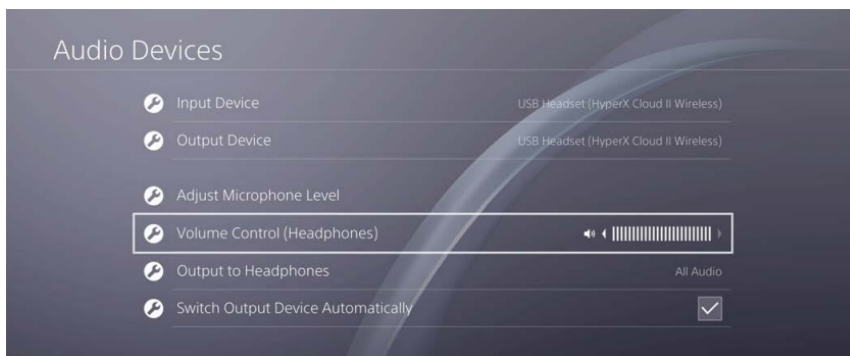
8. Under the Playback tab, verify that “HyperX Cloud II Wireless” is set as Default Device and Default Communication Device. Under the Recording tab, verify that “HyperX Cloud II **Wireless**” is set as Default Device.



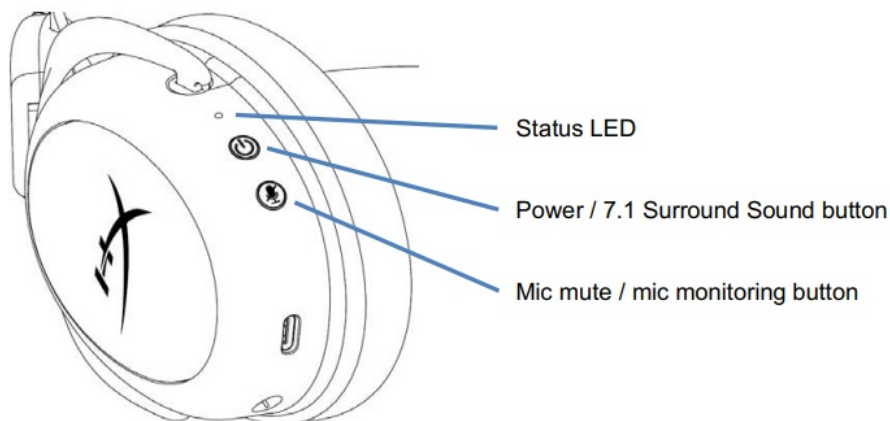
## Setting up with PlayStation 4



1. Set Input Device to USB Headset (HyperX Cloud II Wireless)
2. Set Output Device to USB Headset (HyperX Cloud II Wireless)
3. Set Output to Headphones to All Audio
4. Set Volume Control (Headphones) to maximum.



## Controls



### Status LED

Status	Battery Level	LED
Pairing	–	Flash green and red every 0.2s
Searching	–	Slow breathing green
Connected	90% – 100%	Solid green
	15% – 90%	Blinking green
	< 15%	Blinking red

### Power / 7.1 Surround Sound button

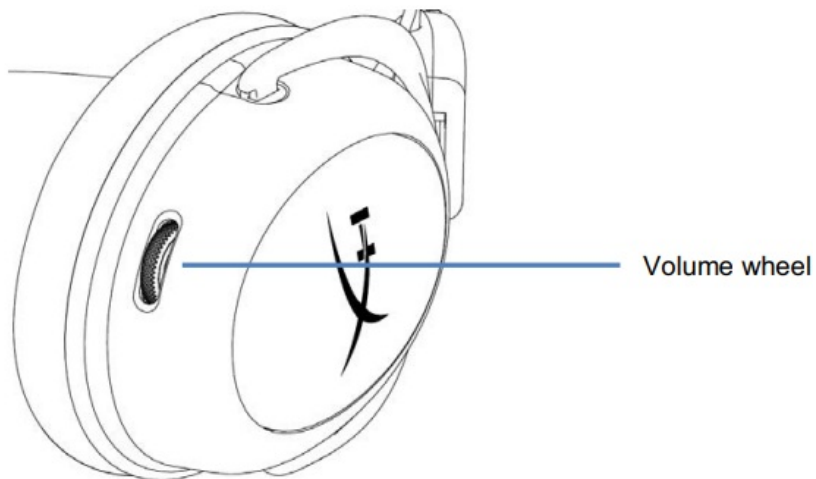
- Hold for 3 seconds to power headset on/off
- Press to toggle 7.1 Surround Sound\* on/off

Virtual 7.1 surround sound outputs as a 2 channel stereo signal to be used with stereo headphones.

### Mic mute / mic monitoring button

- Press to toggle mic mute on/off
  - LED On – Mic muted
  - LED Off – Mic active

- Hold for 3 seconds to toggle mic monitoring on/off



### Volume wheel

- Scroll up and down to adjust volume level

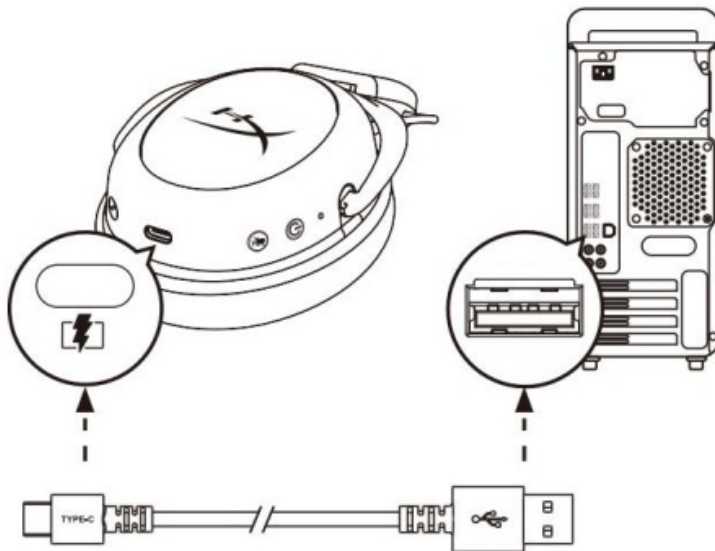
**WARNING:** Permanent hearing damage can occur if a headset is used at high volumes for extended periods of time

### Charging the Headset

It is recommended to fully charge your headset before first use. When charging the headset, the headset status LED will indicate the current charge status

Status LED	Charge Status
Solid green	Fully charged
Breathing green	15% – 99% battery level
Breathing red	< 15% battery level

### Wired charging



To charge the headset via wired, plug the headset to a USB port with the USB charge cable.

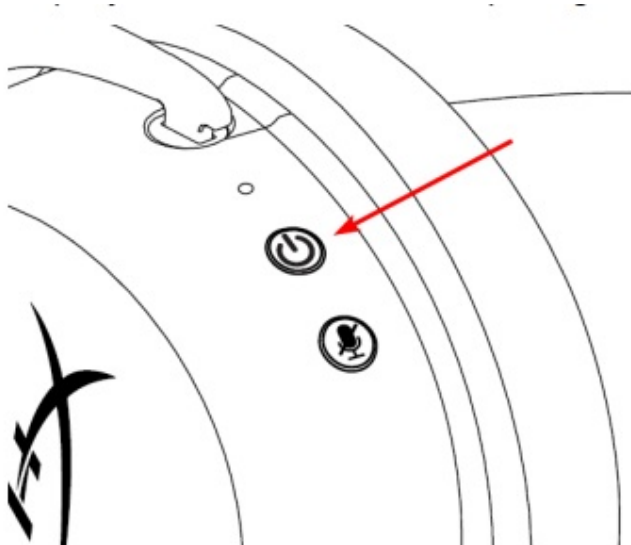
## HyperX NGENUITY Software

Download NGENUITY software at: [hyperxgaming.com/ngenuity](https://hyperxgaming.com/ngenuity)

## Manually Pairing the Headset and USB Adapter

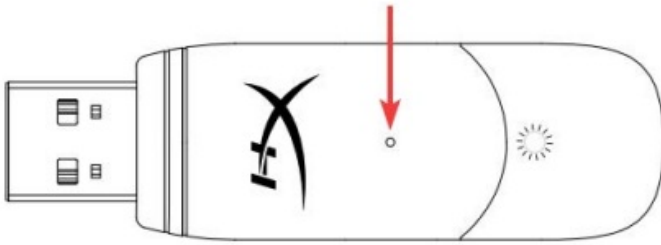
The headset and USB adapter are automatically paired together out of the box. But if manual pairing is needed, follow the steps below to pair the headset and USB adapter.

1. While the headset is powered off, hold down the power button until the headset status LED starts blinking red/green rapidly. The headset is now in pairing mode.



2. While the USB adapter is plugged in, use a small tool (e.g. paper clip, SIM tray ejector, etc.) to hold down the button inside the pin hole until the USB adapter LED starts blinking rapidly. The USB adapter is now in pairing mode.





- Wait until both the headset LED and the USB adapter LED are solid. The headset and USB adapter are now paired together.

### Questions or Setup Issues?

Contact the HyperX support team at: [hyperxgaming.com/support/](https://hyperxgaming.com/support/)



## Documents / Resources

	<p><a href="#">HYPERX HyperX Cloud II Wireless [pdf] User Manual</a> HyperX Cloud II Wireless, Cloud II Wireless, II Wireless, II Wireless, Wireless</p>
--	--

## References

- [HyperX | High Quality Gaming Gear – HyperX US](#)
- [HyperX | High Quality Gaming Gear](#)
- [HyperX | High Quality Gaming Gear](#)
- [User Manual](#)

### Manuals+, Privacy Policy

This website is an independent publication and is neither affiliated with nor endorsed by any of the trademark owners. The "Bluetooth®" word mark and logos are registered trademarks owned by Bluetooth SIG, Inc. The "Wi-Fi®" word mark and logos are registered trademarks owned by the Wi-Fi Alliance. Any use of these marks on this website does not imply any affiliation with or endorsement.