



HyperX Cloud Flight S HX-HSCFS-SG/WW User Manual

[Home](#) » [HYPERX](#) » HyperX Cloud Flight S HX-HSCFS-SG/WW User Manual



User Manual

HyperX Cloud Flight S

Find the language and latest documentation for your HyperX Cloud Flight S here.

HyperX Cloud Flight S Installation Guide

HyperX Cloud Flight™ S

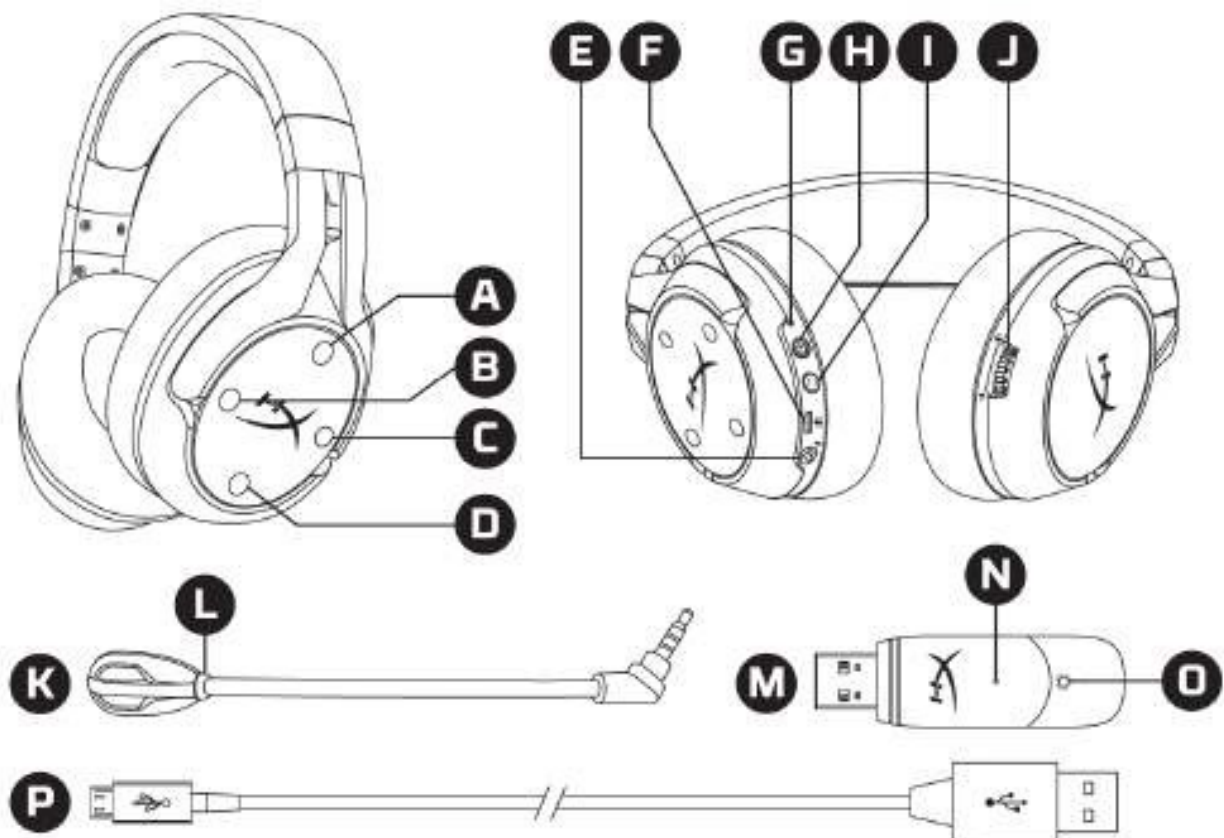


Part Numbers HX-HSCFS-SG/WW

Contents [[hide](#)]

- 1 Overview
- 2 Specifications
- 3 Setting up with PC
- 4 Setting up with Discord
- 5 Setting up with PlayStation
- 4
- 6 Controls
 - 6.1 Mic monitoring toggle
 - 6.2 Game/Chat balance
 - 6.3 Microphone mute toggle
 - 6.4 Status LED
 - 6.5 Power button
 - 6.6 7.1 Surround Sound
 - 6.7 Volume Wheel
- 7 Charging the Headset
 - 7.1 Qi wireless charging
 - 7.2 Wired charging
- 8 HyperX NGENUITY Software
- 9 Documents / Resources
 - 9.1 References
- 10 Related Posts

Overview



A. Up button – Mic monitoring toggle	I. 7.1 Surround Sound button
B. Left button – Game balance	J. Volume wheel
C. Right button – Chat balance	K. Detachable microphone
D. Down button – Mic mute toggle	L. Microphone mute LED
E. Microphone port	M. USB adapter
F. USB charge port	N. Wireless pairing pinhole
G. Status LED	O. Wireless status LED
H. Power button	P. USB charge cable

Specifications

Headphone

Driver: Dynamic, 50mm with neodymium magnets

Type: Circumaural, Closed back

Frequency response: 10Hz–20kHz

Impedance: 32 Ω

Sound pressure level: 99.5dB SPL/mW at 1kHz

T.H.D.: < 1%

Weight: 310g

Weight with mic: 320g

Cable length and type: USB charge cable (1m)

Microphone

Element: Electret condenser microphone

Polar pattern: Bi-directional, Noise-cancelling

Frequency response: 50Hz-18kHz
Sensitivity: -40.5dBV (1V/Pa at 1kHz)

Battery life*

30 hours

Wireless Range**

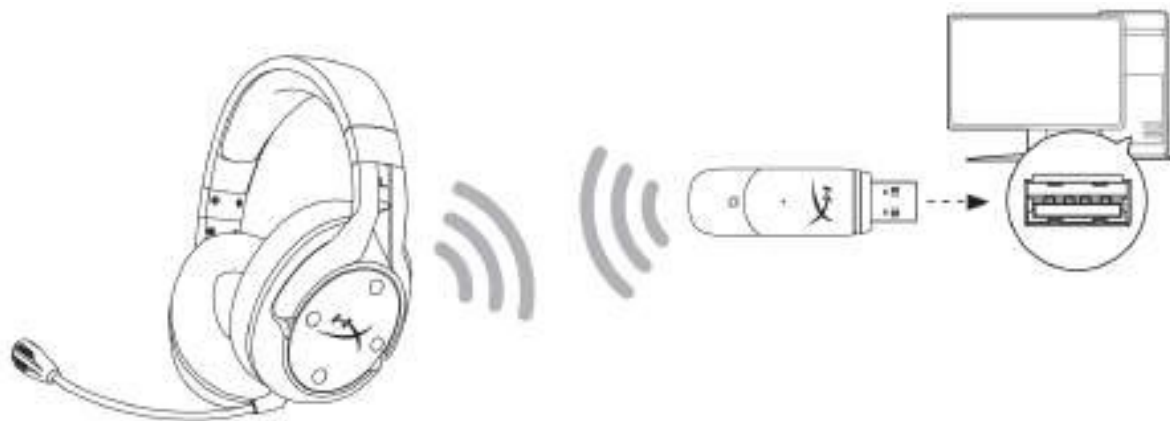
2.4 GHz

Up to 20 meters

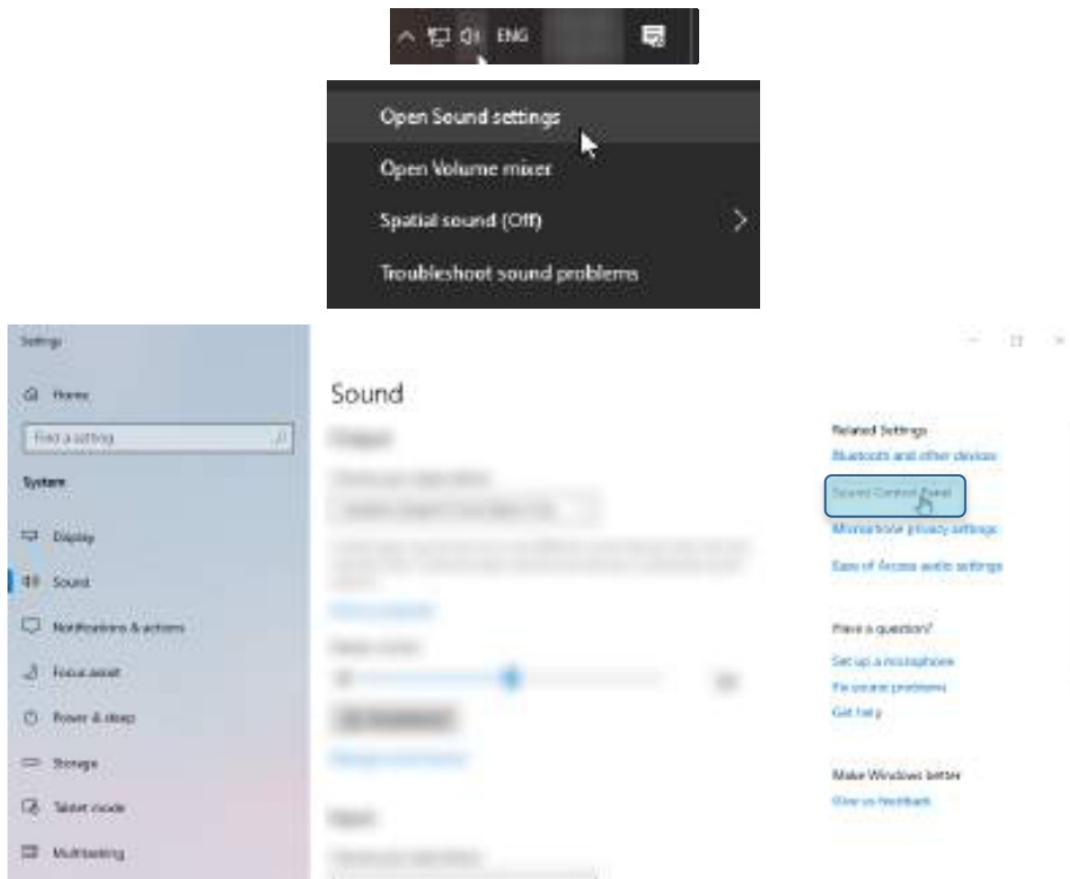
*Tested at 50% headphone volume

**Wireless range may vary due to environmental conditions

Setting up with PC

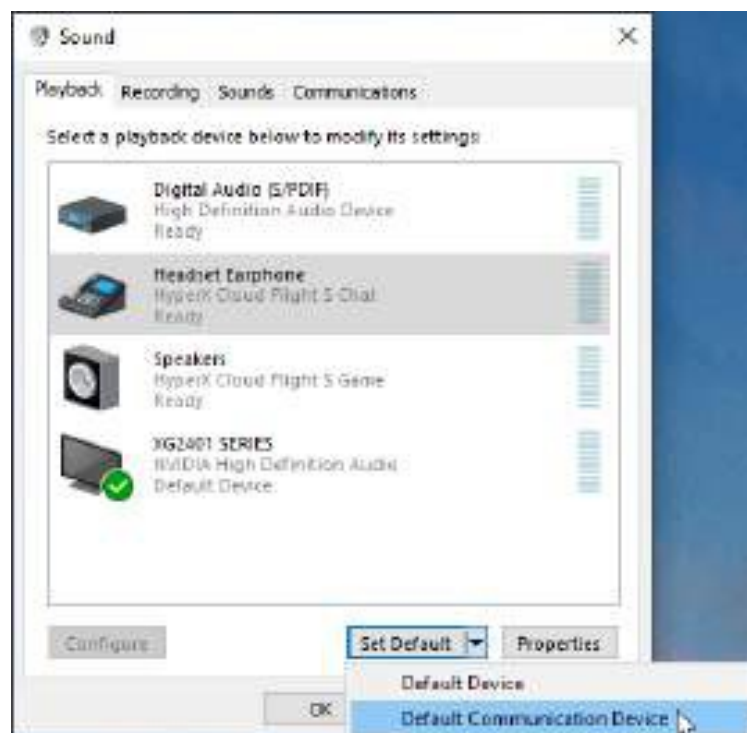


1. Connect the wireless USB adapter to the PC.
2. Power on the headset.
3. Right click speaker icon > Select Open Sound settings > Select Sound Control Panel

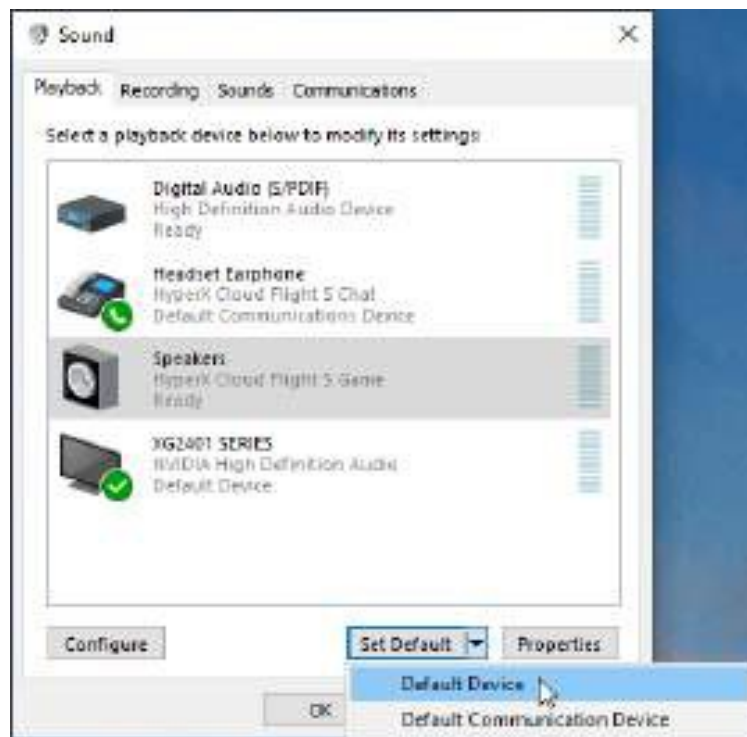


4. Under the Playback tab, click on “**HyperX Cloud Flight S Chat**”. Then click on the down arrow next to Set Default and select Default Communication Device.

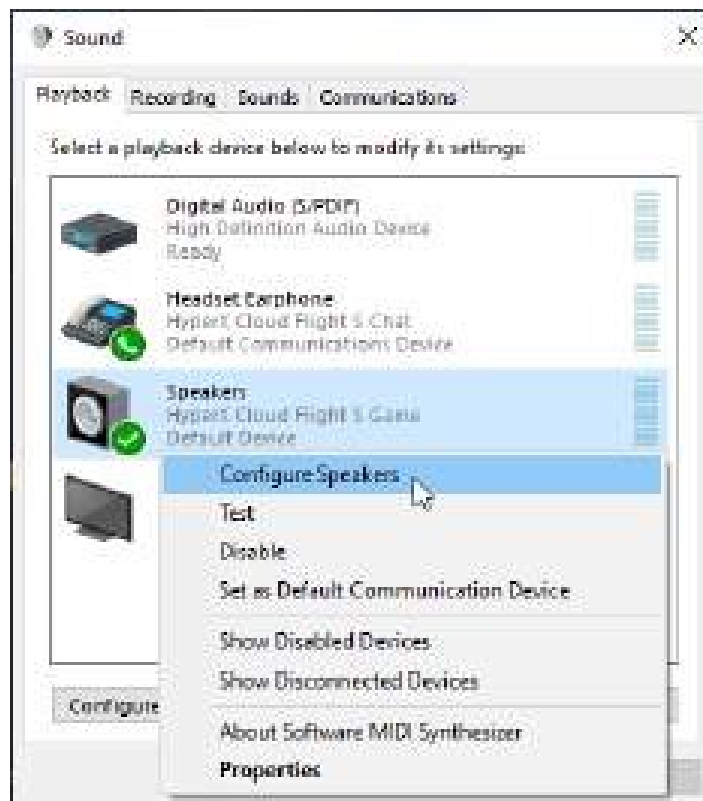
5.



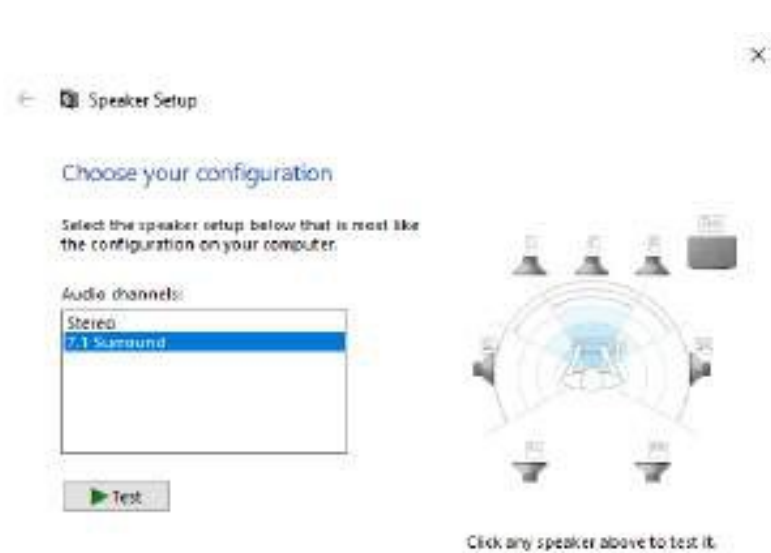
Click on “**HyperX Cloud Flight S Game**”. Then click on the down arrow next to Set Default and select Default Device.



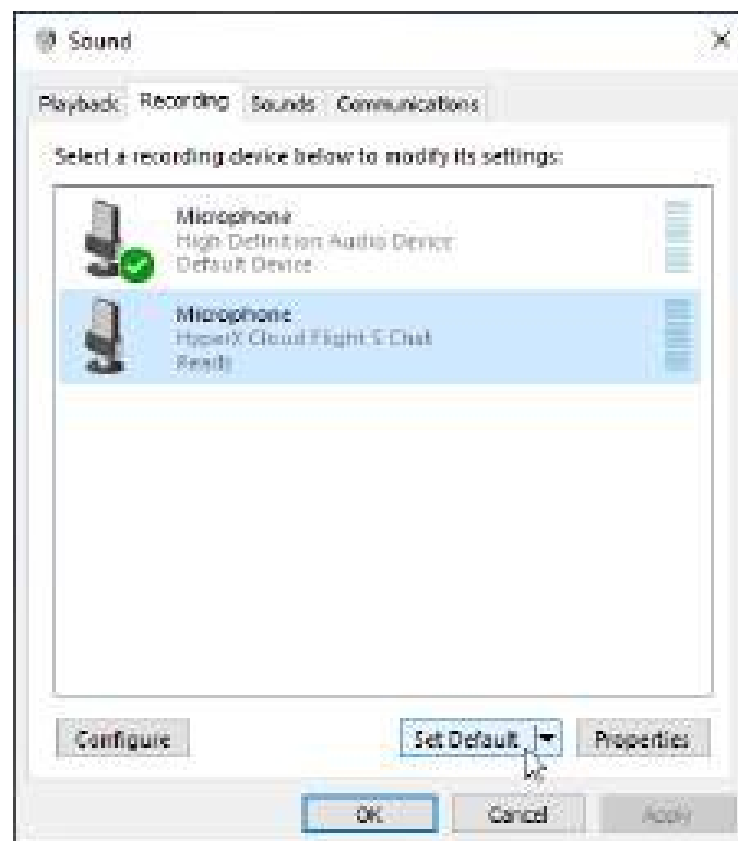
6. Right click on “**HyperX Cloud Flight S Game**” and click on Configure Speakers.



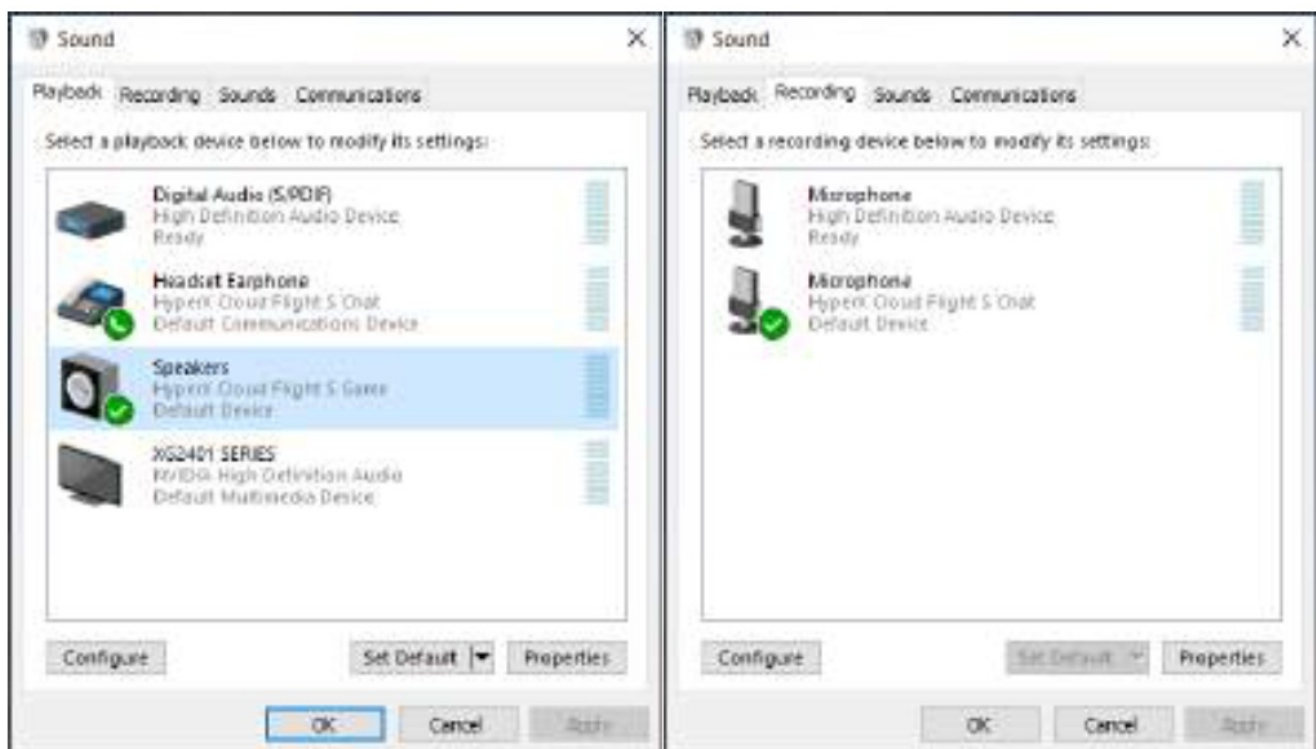
7. Select 7.1 Surround as the speaker configuration and click next.



8. Under the Recording tab, click on **“HyperX Cloud Flight S Chat”** and click on the Set Default button.

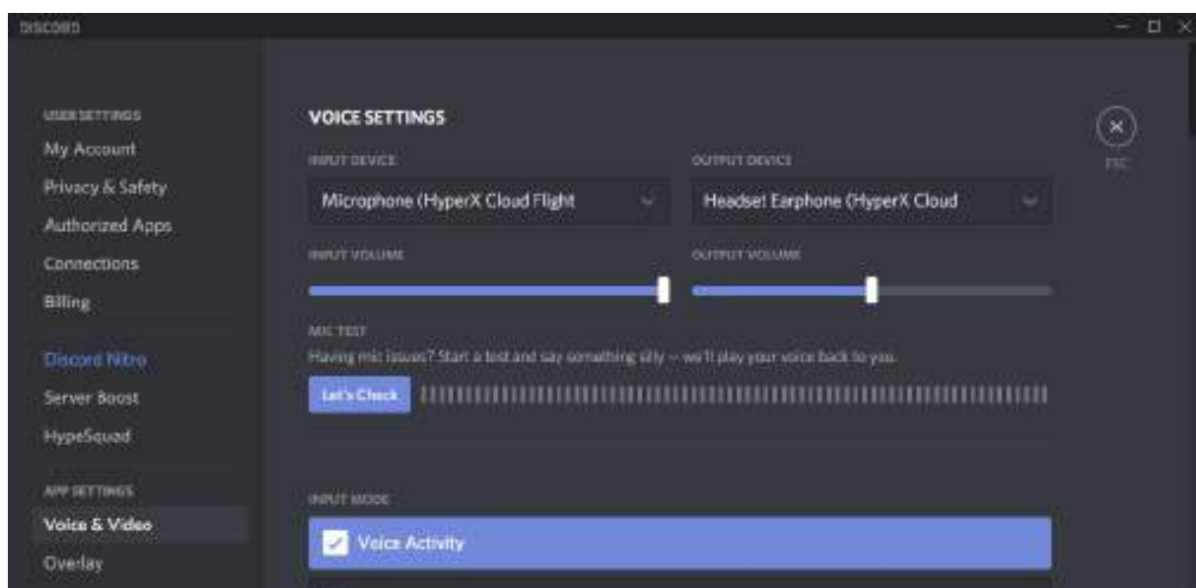


9. Under the Playback tab, verify that **“HyperX Cloud Flight S Game”** is set as Default Device and **“HyperX Cloud Flight S Chat”** is set as Default Communication Device. Under the Recording tab, verify that **“HyperX Cloud Flight S Chat”** is set as Default Device.



Setting up with Discord

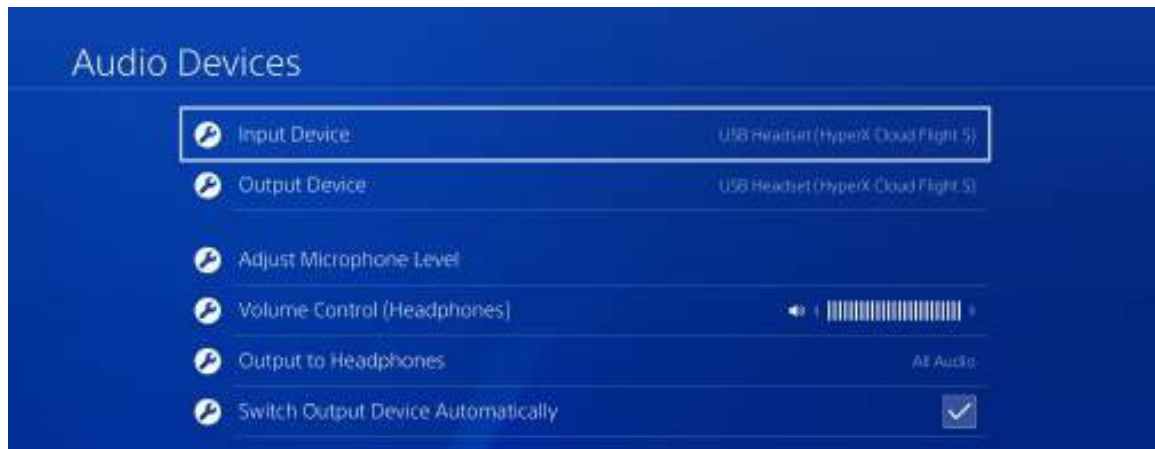
1. In Discord settings, select Voice & Video.
2. Under Voice Settings, set Input Device to **“Microphone (HyperX Cloud Flight S Chat)”**.
3. Set Output Device to **“Headset Earphone (HyperX Cloud Flight S Chat)”**.



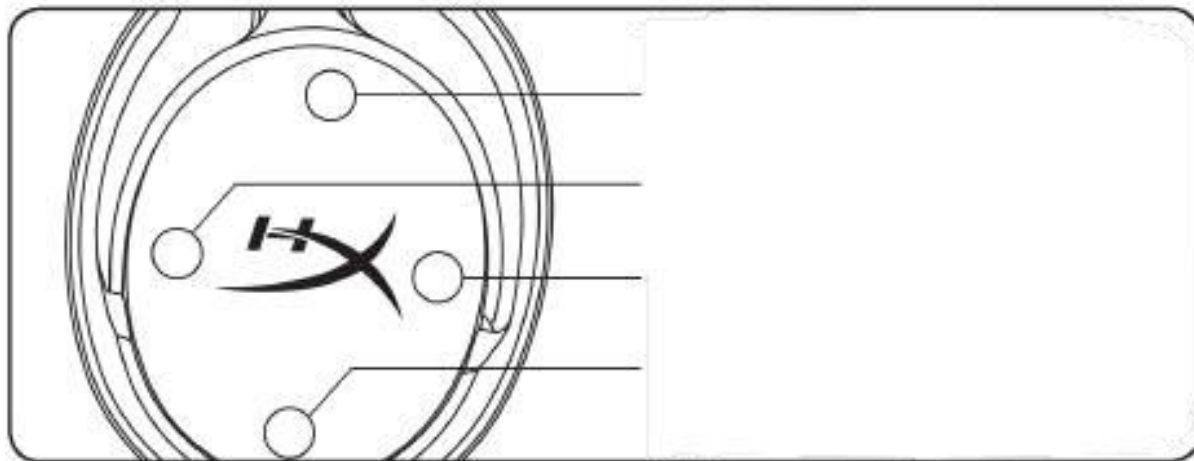
Setting up with PlayStation 4



1. Set Input Device to USB Headset (HyperX Cloud Flight S)
2. Set Output Device to USB Headset (HyperX Cloud Flight S)
3. Set Output to Headphones to All Audio
4. Set Volume Control (Headphones) to the maximum.



Controls



Mic monitoring toggle

Press to toggle mic monitoring on/off.

Game/Chat balance

Press to adjust mix between game audio and chat audio.¹

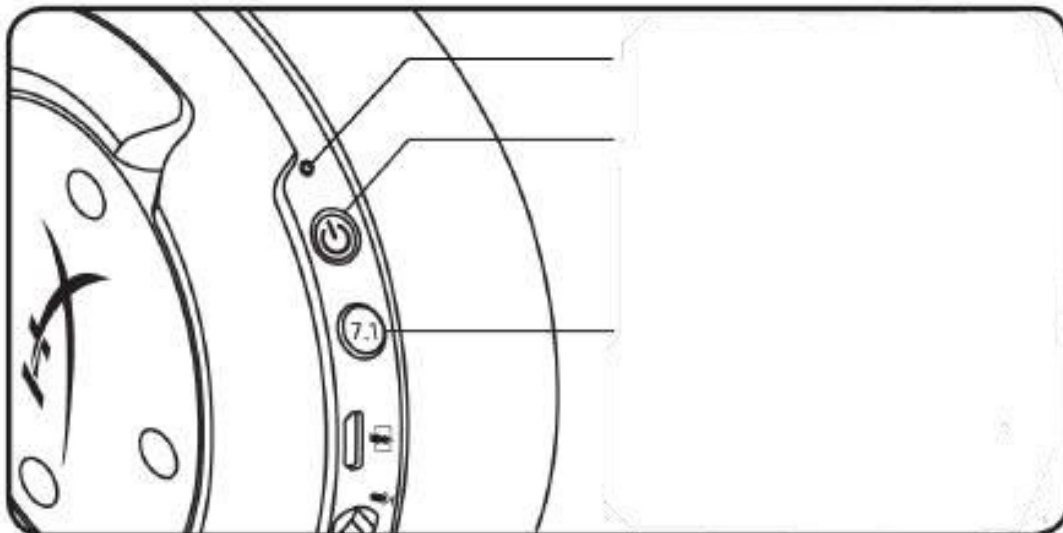


The game/chat balance functionality operates independently from the overall headset audio volume.¹ Game/chat balance function is unavailable when using headset on PlayStation 4.

Microphone mute toggle

Press to toggle microphone mute on/off. The microphone mute LED will indicate the current mute status.

Microphone Mute LED	Mute Status
Red	Mute on
Off	Mute off



Status LED

Status	Battery Level	LED
Pairing	–	Flash green and red every 0.5s
Searching	–	Slow breathing green
Connected	90% – 100%	Solid green
	15% – 90%	Blinking green
	< 15%	Blinking red

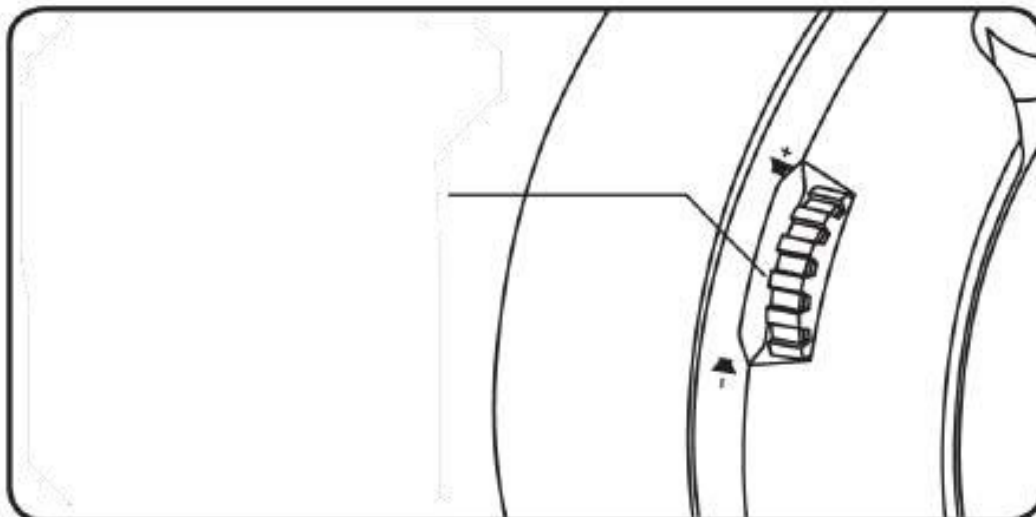
Power button

Hold for 3 seconds to power the headset on/off.

7.1 Surround Sound

* Press to toggle 7.1 Surround Sound on/off.

* Virtual 7.1 surround sound outputs as a 2 channel stereo signal to be used with stereo headphones.



Volume Wheel

Scroll up and down to adjust volume level.

WARNING: Permanent hearing damage can occur if a headset is used at high volumes for extended periods of time.

Charging the Headset

It is recommended to fully charge your headset before first use.
When charging the headset, the headset status LED will indicate the current charge status.

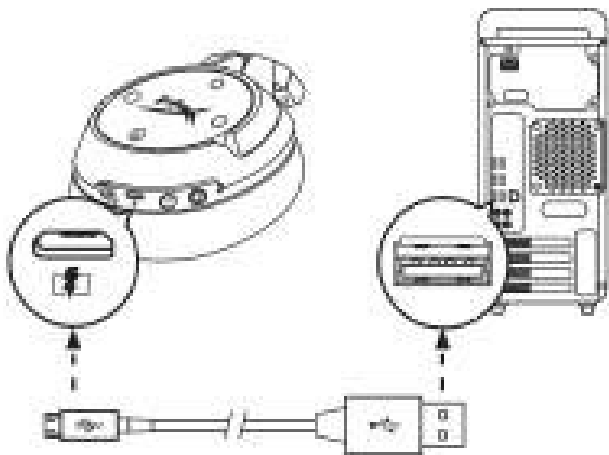
Status LED	Charge Status
Solid green	Fully charged
Breathing green	15% – 99% battery level
Breathing red	< 15% battery level

Qi wireless charging



To charge the headset via Qi wireless, place the left earcup onto a Qi wireless charging base.

Wired charging



To charge the headset via wired, plug the headset into a USB port with the USB charge cable.

HyperX NGENUITY Software

To customize EQ profiles, programmable buttons, and check battery status, download the HyperX NGENUITY software at: hyperxgaming.com/ngenuity


Questions or Setup Issues?

Contact the HyperX support team at: hyperxgaming.com/support/



HyperX Cloud Flight™ S



Documents / Resources

	HyperX HyperX Cloud Flight S HX-HSCFS-SG/WW [pdf] User Manual HyperX, Cloud, Flight, HX-HSCFS-SG, HX-HSCFS-WW
---	--

References

-  [HyperX | High Quality Gaming Gear](#)
-  [HyperX | High Quality Gaming Gear](#)