



HyperX HX-MC005B Pulsefire Raid Mouse User Manual

[Home](#) » [HYPERX](#) » HyperX HX-MC005B Pulsefire Raid Mouse User Manual

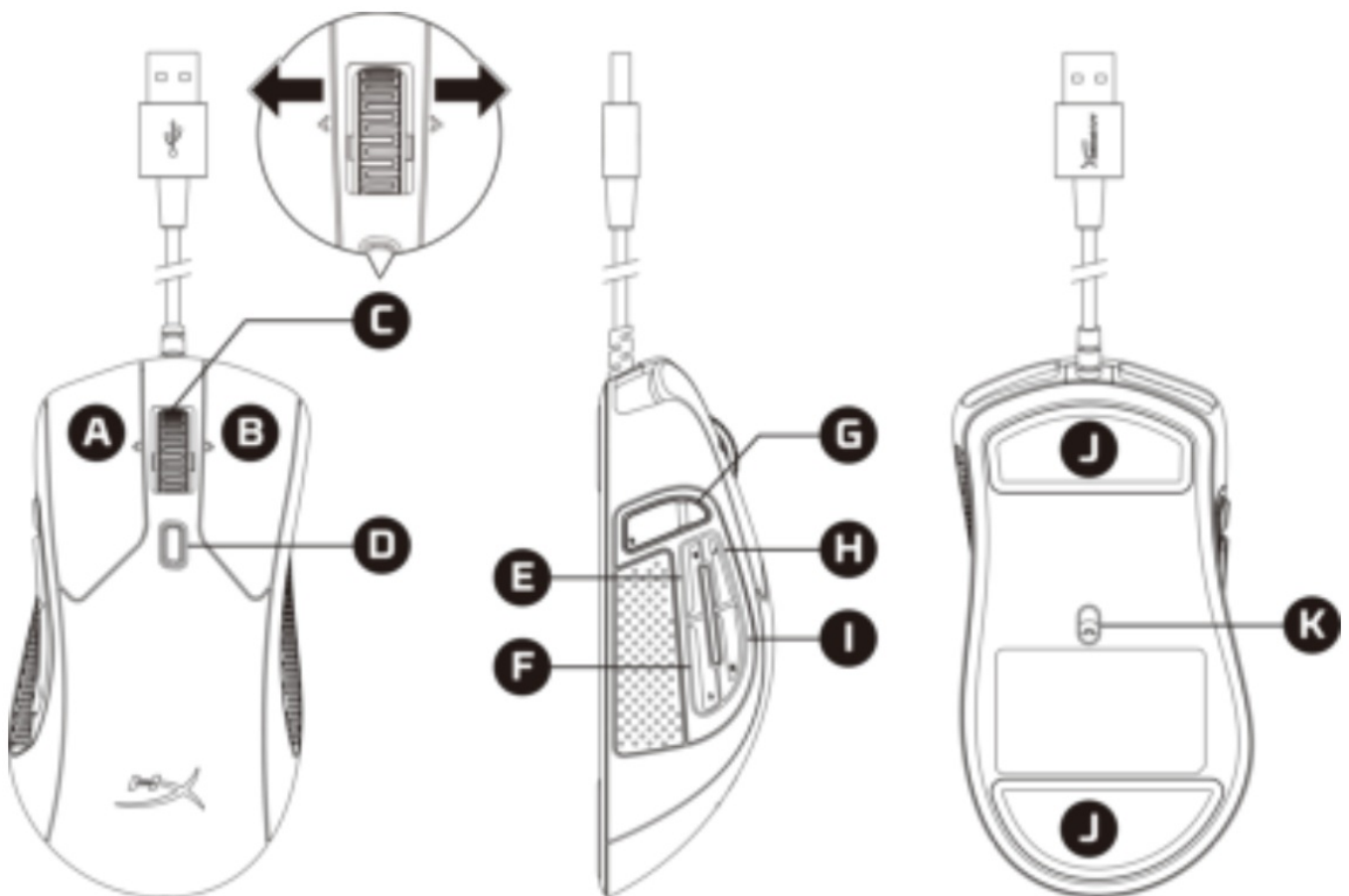
HyperX HX-MC005B Pulsefire Raid Mouse



Contents [[hide](#)

- [1 Overview](#)
- [2 Specifications](#)
- [3 Installation](#)
- [4 Function Keys](#)
- [5 HyperX NGENUITY Software](#)
- [6 Using with Console](#)
- [7 Factory Reset](#)
- [8 Documents / Resources](#)
 - [8.1 References](#)
- [9 Related Posts](#)

Overview



- A.** Left click button
- B.** Right click button
- C.** Wheel tilt left/right* – Previous/Next Track
- D.** DPI button
- E.** Button 5 – Forward click
- F.** Button 4 – Backward click
- G.** Button 8* – Mute
- H.** Button 7* – Increase volume
- I.** Button 6* – Decrease volume
- J.** Mouse skates
- K.** Optical gaming sensor

Specifications

- **Shape:** Ergonomic
- **Sensor:** Pixart PMW3389
- **Resolution:** Up to 16,000 DPI
- **DPI presets:** 800 / 1600 / 3200 DPI
- **Speed:** 450 IPS
- **Acceleration:** 50G
- **Buttons:** 11
- **Left / Right buttons switches:** Omron
- **Left / Right buttons durability:** 20 million clicks
- **Backlight:** RGB (16,777,216 colors)
- **Light effects:** 2 RGB lighting zones
- **Onboard memory:** 1 profile
- **Connection type:** USB 2.0
- **Polling rate:** 1000Hz
- **Cable type:** Braided
- **Dimensions (L x W x H):** 127.8mm x 71.0mm x 41.5mm
- **Cable length:** 1.8m
- **Weight (without cable)¹:** Approximately 95g
- **Weight (with cable):** Approximately 125g
- **Software:** HyperX NGENUITY

Please see our Support Page for more information regarding the weight.

Installation

Connect the USB connector to the computer.

Function Keys

Function Keys	Secondary Feature
DPI button	Change between DPI presets. Default values are: <ul style="list-style-type: none"> • 800 DPI (blue). • 1600 DPI (yellow) • 3200 DPI (green).

HyperX NGENUITY Software

To customize lighting, DPI, and macro settings, download the HyperX NGENUITY Software here: hyperxgaming.com/ngenuity.

Using with Console

Connect the USB connector to PS4 or Xbox One to use with console.

Factory Reset

If you are experiencing any issue with the mouse, you can perform a factory reset. Onboard memory will be cleared, and all settings will revert back to default.

Function Keys	Secondary Feature
Hold DPI button + mouse wheel button down for 5 seconds	Perform a factory reset on the mouse.

Questions or Setup Issues?
Contact the HyperX support team at: hyperxgaming.com/support/



Documents / Resources

This image is a large, empty white rectangle that occupies the majority of the page. It appears to be a placeholder for a document or a large image that is not present. The rectangle is perfectly white and has no visible content, text, or markings.

References

- ~~HyperX~~ | High Quality Gaming Gear
- ~~HyperX~~ | High Quality Gaming Gear
- ~~HyperX~~ | High Quality Gaming Gear
- ~~HyperX~~ | High Quality Gaming Gear
- ~~HyperX~~ | High Quality Gaming Gear
- ~~HyperX~~ Support

