

**HYPERX**  
**HX-HSCA-RD/AM**  
**Series Cloud**  
**Alpha Headset**



# HYPERX HX-HSCA-RD/AM Series Cloud Alpha Headset User Manual

[Home](#) » [HYPERX](#) » HYPERX HX-HSCA-RD/AM Series Cloud Alpha Headset User Manual 

## Contents

- [1 HYPERX HX-HSCA-RD/AM Series Cloud Alpha Headset](#)
- [2 Product Usage Instructions](#)
- [3 Features:](#)
- [4 Technical Specifications](#)
- [5 Overview](#)
- [6 Usage \(PC\)](#)
- [7 FAQs](#)
- [8 Documents / Resources](#)
  - [8.1 References](#)



**HYPERX HX-HSCA-RD/AM Series Cloud Alpha Headset**



## Specifications

- Part Numbers: HX-HSCA-RD/AM, HX-HSCA-RD/AS, HX-HSCA-RD/EE, HX-HSCA-RD/EM
- Memory Foam: Premium red memory foam
- Design: Dual Chamber Drivers for clearer sound
- Features: Detachable noise-cancellation microphone, in-line audio controls, multi-platform compatibility

## Product Usage Instructions

### Setup

The HyperX Cloud Alpha Headset features a detachable cable and detachable microphone.

#### To connect the detachable headset cable:

Locate the end with the headphone icon label and plug the cable into the female jack on the left headset ear cup. Both the plug and ear cup female jack are grey for easy identification.

#### To connect the detachable microphone:

Plug the microphone into the female microphone jack on the ear cup and push until it sits flush.

### In-line Audio Control Operation

The in-line audio control contains a volume wheel to adjust the headphone output volume and a microphone mute slider to mute the microphone.

#### To mute/activate the microphone:

Slide the microphone mute button to the down position to mute and up position to activate.

### Usage (PC)

#### To connect to a computer:

Connect the headset's 3.5mm plug to the female jack on the PC extension cable. The audio plug with green stripes goes to the green input and the microphone plug with pink stripes goes to the pink input.

### Usage (PlayStation TM 4)

**To use with PS4™:**

Connect the 3.5mm plug on the headset directly to the PS4™ game controller.

**HyperX Cloud Alpha Headset**

Find the language and latest documentation for your HyperX Cloud Alpha Headset [here](#).

**HyperX Cloud Alpha Headset Installation Guide****Part Numbers:**

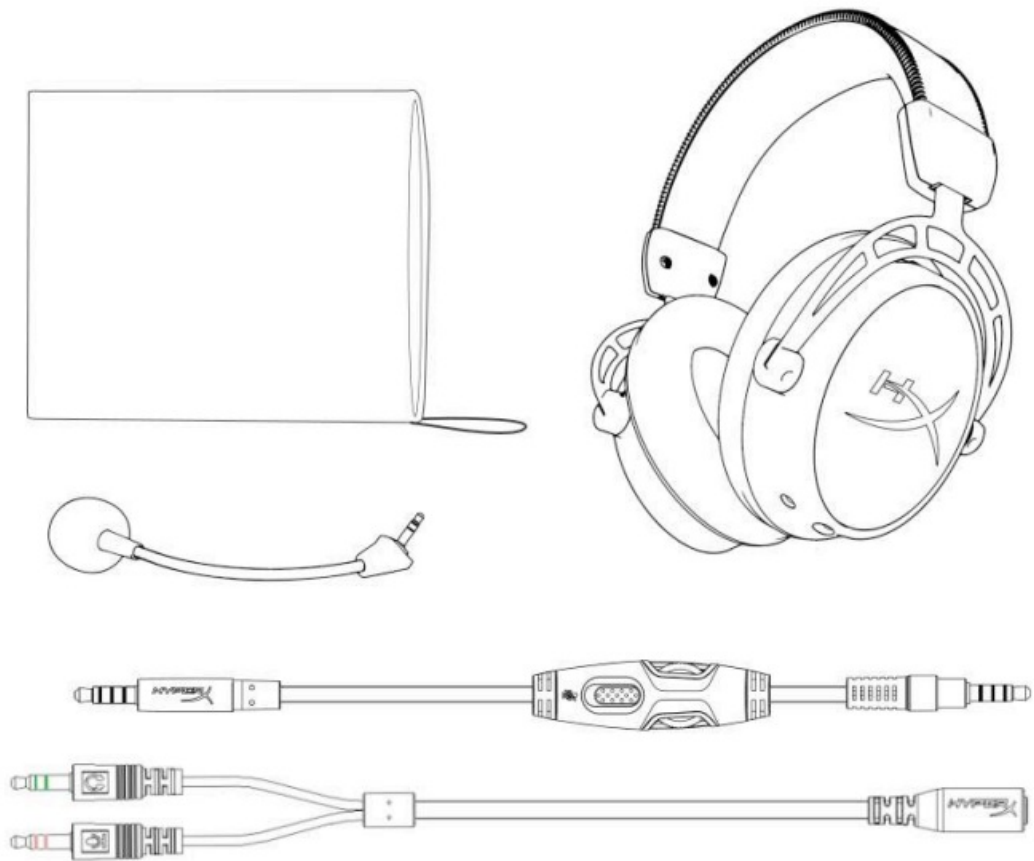
- HX-HSCA-RD/AM
- HX-HSCA-RD/AS
- HX-HSCA-RD/EE
- HX-HSCA-RD/EM

**Introduction**

HyperXTM Cloud Alpha's ground-breaking Dual Chamber Drivers design gives audio more distinction and clarity by reducing distortion. The dual chambers separate the bass for cleaner, smoother sound. Cloud Alpha has premium red memory foam, an expanded headband and softer, more pliable leatherette, an aluminium frame, detachable braided cable and noise-cancellation microphone. Multi-platform compatible with in-line audio controls on PC, PS4™, Xbox One™ and other platforms with 3.5mm ports.

**What's included:**

- HyperX Cloud Alpha Headset
- Detachable microphone
- Detachable headset cable
- PC extension cable
- Carry bag



## Features:

- HyperX dual chamber drivers
- Signature award-winning HyperX comfort
- Durable aluminium frame with expanded headband
- Detachable braided cable with convenient in-line audio control
- Detachable noise-cancellation microphone
- Discord and TeamSpeak™ Certified
- Multi-platform compatibility

## Technical Specifications

### Headphone:

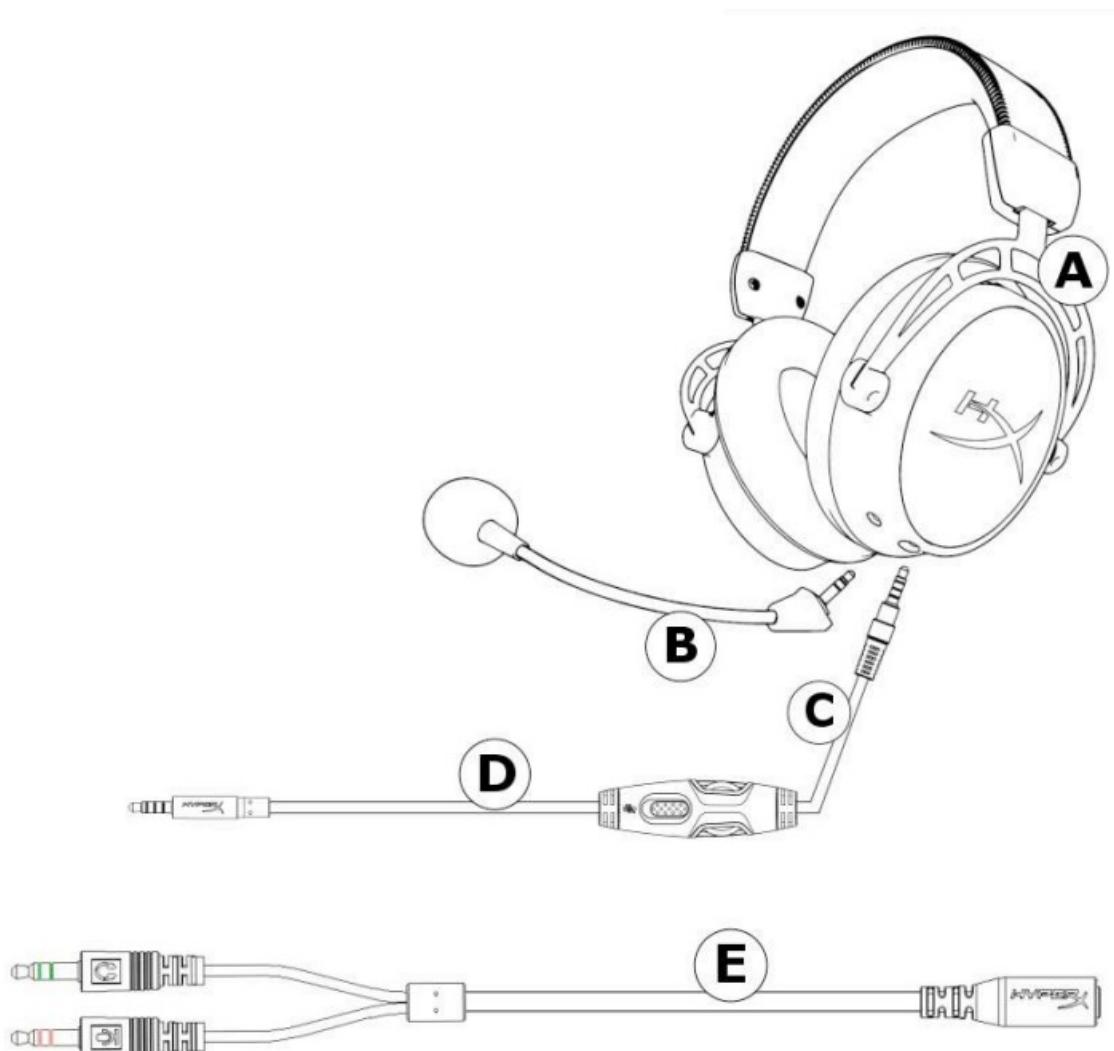
- **Driver:** Custom dynamic, 50mm with neodymium magnets
- **Type:** Circumaural, closed back
- **Frequency response:** 13Hz–27,000 Hz
- **Impedance:** 65  $\Omega$
- **Sound pressure level:** 98dBSPL/mW at 1kHz
- **THD:** < 1%
- **Weight:** 298g
- **Weight w/ mic:** 336g
- **Cable length and type:** Detachable headset (1.3m) + PC extension cable (2m)
- **Connection:** **Detachable headset** – 3.5mm plug (4 pole) + PC extension cable – 3.5mm stereo and mic plugs

## Microphone:

- **Element:** Electret condenser microphone
- **Polar pattern:** Noise-cancelling
- **Frequency response:** 50Hz-18,000 Hz
- **Sensitivity:** -43dBV (0dB=1V/Pa,1kHz)

## Overview

- A. Headband adjustment slider
- B. Detachable noise cancellation mic
- C. Detachable headset cable
- D. In-line audio control
- E. PC extension cable with 3.5mm stereo and mic plugs

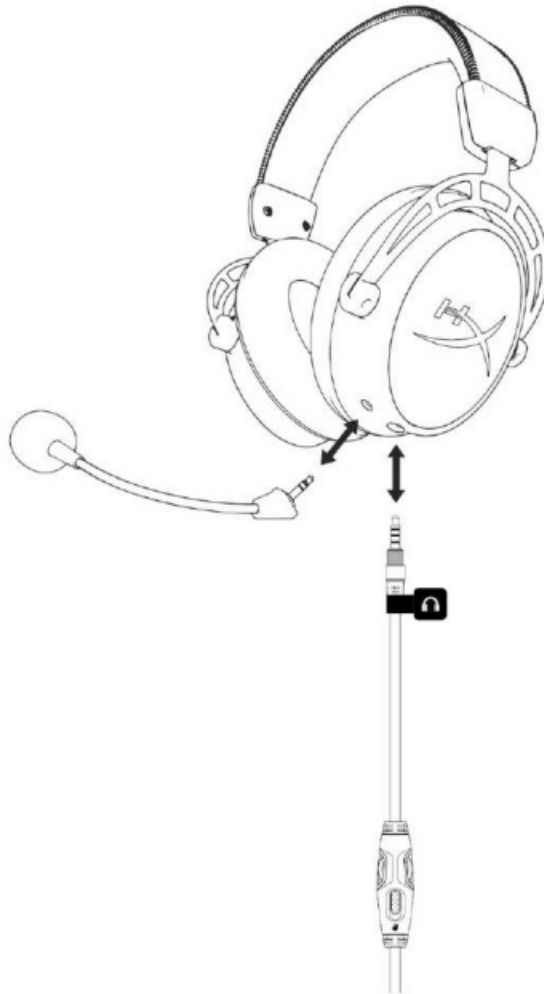


## Setup

- The headset features a detachable cable and detachable microphone.
- To connect the detachable headset cable, locate the end with the headphone icon label and plug the cable into the female jack on the left headset ear cup. The plug and ear cup female jack both have a grey colour for easy

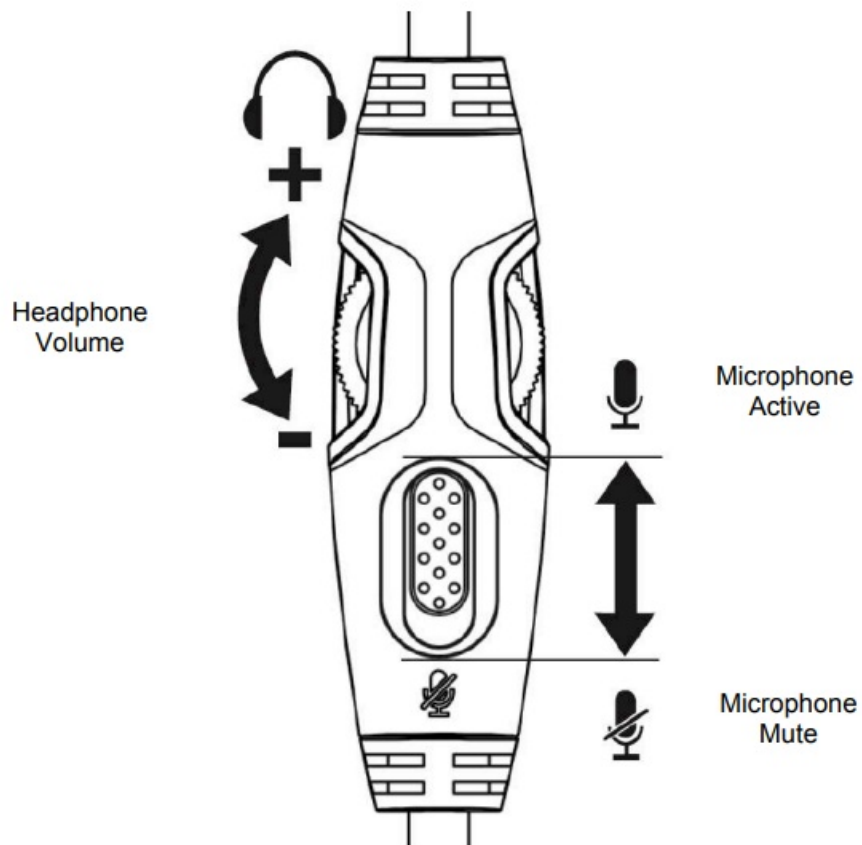
identification.

- To connect the detachable microphone, plug the microphone into the female microphone jack on the ear cup and push until the microphone sits flush.



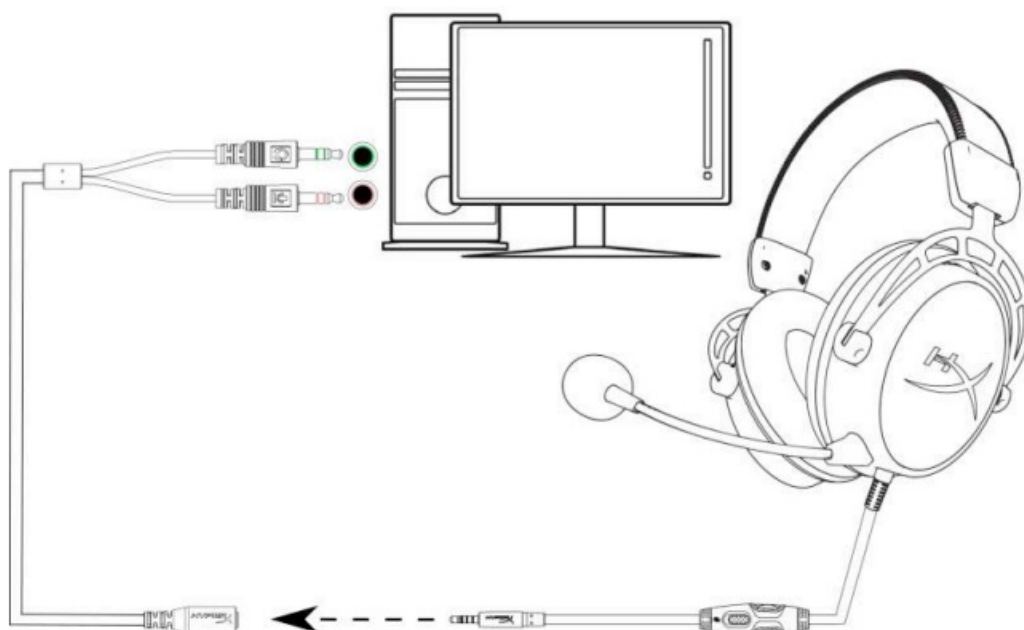
### **In-line audio control operation**

- The in-line audio control contains a volume wheel to adjust the headphone output volume and a microphone mute slider to mute the microphone.
- To increase the headset volume, rotate the volume wheel clockwise (towards the + sign). To reduce the volume, rotate the volume wheel anticlockwise (towards the – sign).
- To mute the microphone, slide the microphone mute button to the down position. To activate the microphone, slide the microphone mute button to the up position.



## Usage (PC)

- To connect the headset to your computer (or other device) that has both a headphone jack and a microphone jack, connect the headset's 3.5mm plug to the female jack on the PC extension cable. The PC extension cable has two 3.5mm
- jacks. The audio plug, which has green stripes, plugs into the port signified by a green input or headphone symbol . The microphone plug, which has pink stripes, plugs into the port signified by a pink input or a microphone symbol .

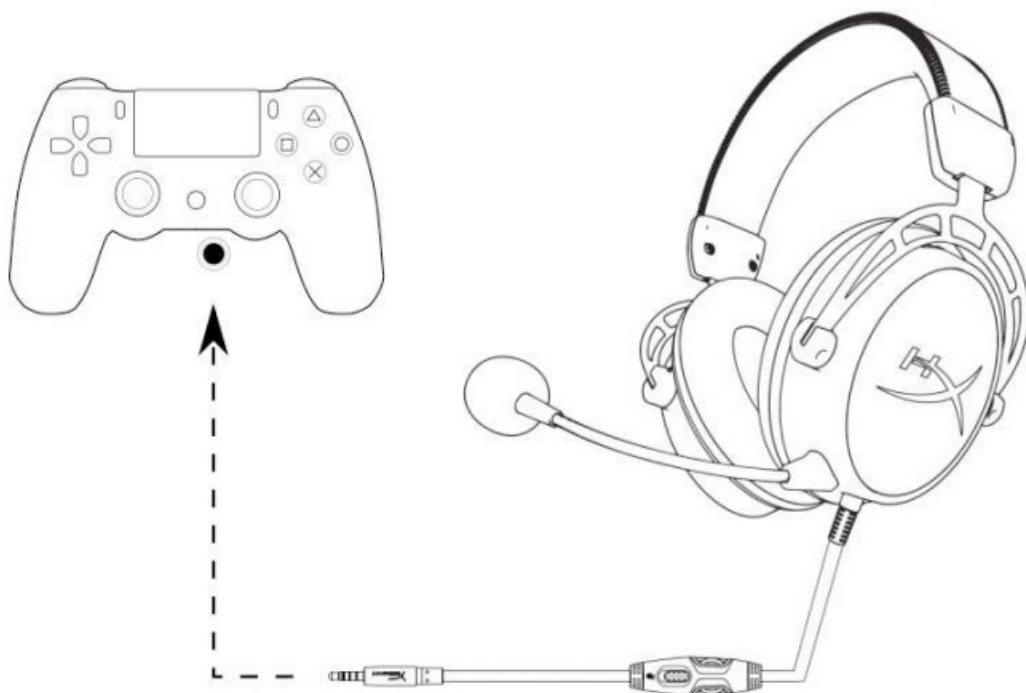


*Using with PC extension cable*

### Usage (PlayStation™ 4)

To use the headset with a PlayStation™ 4 (PS4™), connect the 3.5mm plug on the headset directly to the PS4™ game controller and follow these steps:

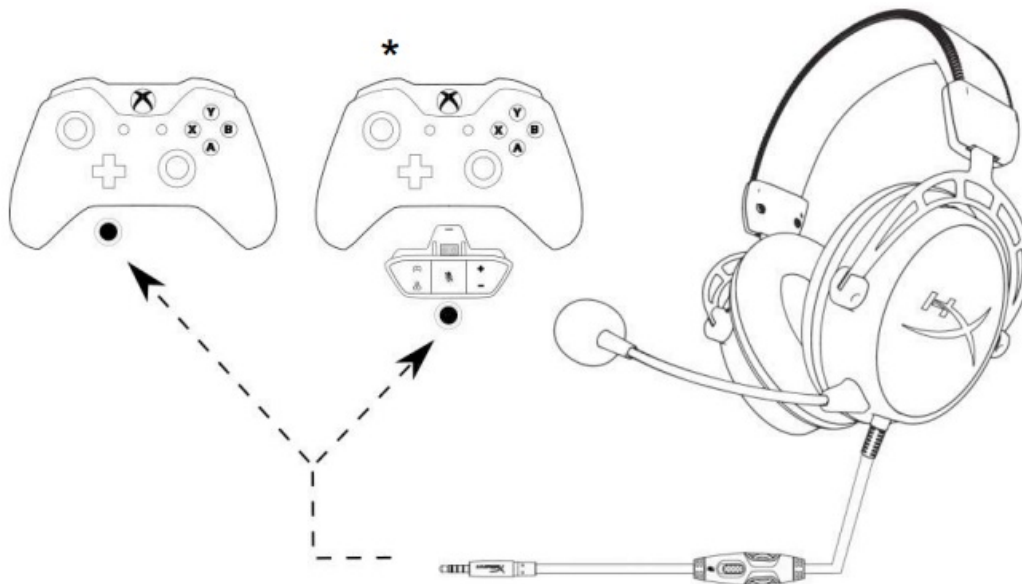
1. Turn on your PS4™ game console.
2. Navigate to the 'Settings' Menu and select it.
3. Highlight the 'Devices' menu option and select it.
4. Scroll down to 'Audio Devices' and select it.
5. Choose 'Output to Headphones' and select 'All Audio'.



*Using with PS4™*

### Usage (Xbox One™)

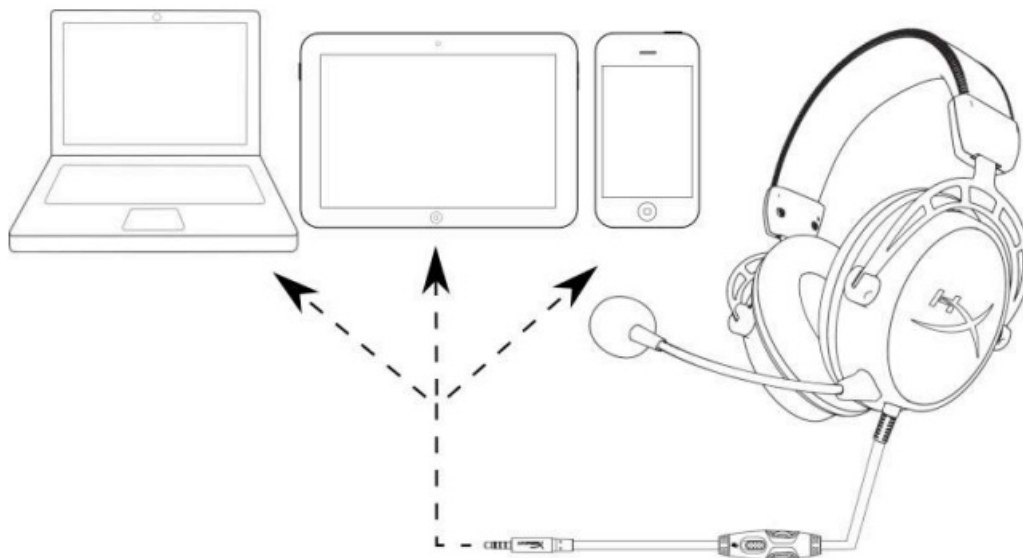
- To use the headset with an Xbox One™, connect the 3.5mm plug on the headset directly to the 3.5mm jack on the Xbox™ One controller
- If your Xbox One™ controller does not have a 3.5mm jack, you will need the Xbox One™ Stereo Headset adapter (sold separately) that plugs into the Xbox One™ controller (pictured below).



*Using with Xbox One™*

### **Usage (mobile device)**

To use the headset with a mobile device (or other device) with a headset jack (4 pole CTIA), connect the 3.5mm plug directly into the headset jack on your device.



*Using with mobile device (phone, tablet or notebook)*

Downloaded from [thelostmanual.org](http://thelostmanual.org)

## **FAQS**

### **Q: Can I use the HyperX Cloud Alpha Headset with Xbox One™?**

A: Yes, the headset is multi-platform compatible, including Xbox One™, with a 3.5mm port.

### **Q: How do I adjust the headband on the Cloud Alpha Headset?**

A: The headband adjustment slider allows you to customize the fit of the headset for your comfort.

## Documents / Resources



[HYPERX HX-HSCA-RD/AM Series Cloud Alpha Headset \[pdf\]](#) User Manual  
HX-HSCA-RD-AM, HX-HSCA-RD-AS, HX-HSCA-RD-EE, HX-HSCA-RD-EM, HX-HSCA-RDAM  
Series Cloud Alpha Headset, HX-HSCA-RDAM Series, Cloud Alpha Headset, Alpha Headset

## References

-  [Your Ultimate Resource for Millions of User Manuals](#)
- [User Manual](#)

[Manuals+](#), [Privacy Policy](#)

This website is an independent publication and is neither affiliated with nor endorsed by any of the trademark owners. The "Bluetooth®" word mark and logos are registered trademarks owned by Bluetooth SIG, Inc. The "Wi-Fi®" word mark and logos are registered trademarks owned by the Wi-Fi Alliance. Any use of these marks on this website does not imply any affiliation with or endorsement.