



HYPERX Clutch Wireless Gaming Controller User Guide

[Home](#) » [HYPERX](#) » HYPERX Clutch Wireless Gaming Controller User Guide 

Contents

- [1 HYPERX Clutch Wireless Gaming Controller](#)
- [2 HyperX Clutch](#)
- [3 Setup](#)
- [4 Pairing and Connecting](#)
- [5 Usage](#)
- [6 FCC rules](#)
- [7 Documents / Resources](#)
 - [7.1 References](#)
- [8 Related Posts](#)



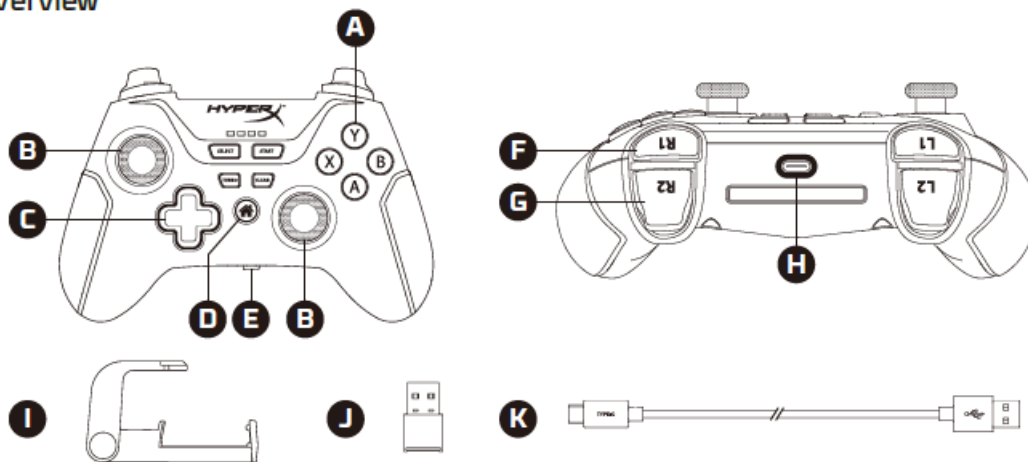
HYPERX Clutch Wireless Gaming Controller



HyperX Clutch

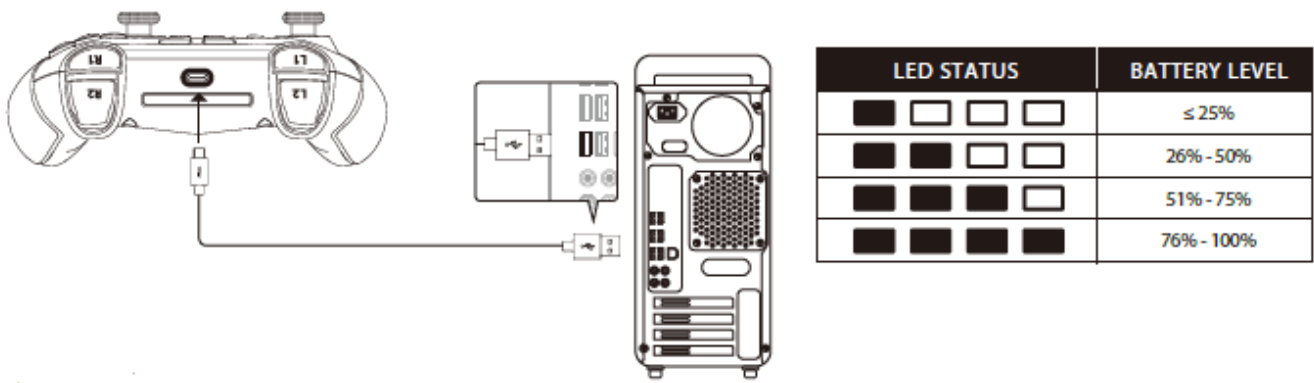
Wireless Gaming Controller

Overview



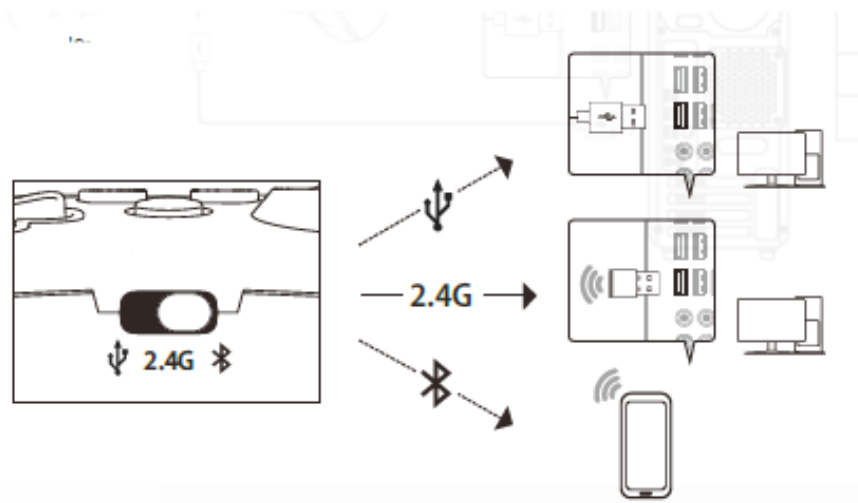
1. Action buttons
2. Analog sticks (L3/R3)
3. D-Pad
4. Home button
5. Mode selection switch
6. Bumpers (L1/R1)
7. Triggers (L2/R2)
8. USB-C port
9. Convertible mobile clip
10. 2.4GHz wireless adapter
11. USB-C to USB-A cable

Setup



It is recommended to fully charge the controller before first use.

Mode Selection



Pairing and Connecting

2.4G

1. Set the mode selection switch to 2.4G.
2. Connect the 2.4GHz wireless adapter to the PC.
3. Tap the Home button. The controller will power on and attempt to connect to the 2.4GHz wireless adapter.

Bluetooth

1. Set the mode selection switch to Bluetooth.
2. Press and hold the Home button for 6 seconds until the LEDs rapidly scroll to indicate pairing mode.
3. On your Bluetooth-enabled device, search and connect to “HyperX Clutch.”

Usage

Power – 2.4G or Bluetooth Mode

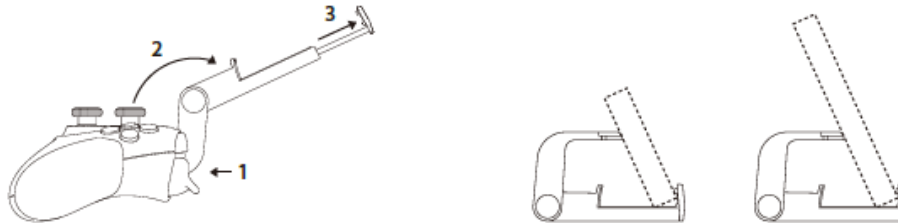
Press the Home button to power the controller. The controller will attempt to connect to your device. The controller will automatically shut off after 5 minutes of inactivity.

- **Handheld Mode**

Attach the mobile clip and insert a phone.

- **Tabletop Mode**

Fold the clip to use as a phone or tablet stand.



Questions or Setup Issues?

Contact the HyperX Support Team at: <http://www.hyperxgaming.com/support>

FCC rules

FCC Compliance and Advisory Statement

This device complies with Part 15 of the FCC rules. Operation is subject to the following two conditions: (1) this device may not cause harmful interference, and (2) this device must accept any interference received, including interference that may cause undesired operation.


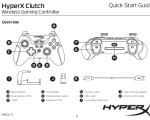
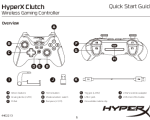
This equipment has been tested and found to comply with the limits for a Class B digital device, according to Part 15 of the FCC rules. These limits are designed to provide reasonable protection against harmful interference in a residential installation.

This equipment generates, uses and can radiate radio frequency energy and if not installed and used in accordance with the instructions, may cause harmful interference to radio communications. However, there is no guarantee that interference will not occur in a particular installation. If this equipment does cause harmful interference to radio or television reception, which can be determined by turning the equipment off and on, the user is encouraged to try correct the interference by one or more of the following measures:

1. Reorient the receiving antenna.
2. Increase the separation between the equipment and receiver.
3. Connect the equipment into an outlet on a circuit different from that to which the receiver is connected.
4. Consult the dealer or an experienced radio/TV technician for help.

Any special accessories needed for compliance must be specified in the instruction manual.

Documents / Resources

	<p>HYPERX Clutch Wireless Gaming Controller [pdf] User Guide CP001, B94-CP001, B94CP001, Clutch Wireless Gaming Controller</p>
	<p>HyperX Clutch Wireless Gaming Controller [pdf] User Guide Clutch, Wireless Gaming Controller, Clutch Wireless Gaming Controller</p>
	<p>HyperX Clutch Wireless Gaming Controller [pdf] User Guide Clutch Wireless Gaming Controller, Clutch Gaming Controller, Wireless Gaming Controller, Wireless Controller, Gaming Controller, Clutch Controller, Controller, 4402213</p>

References

- [!\[\]\(2824aab9645d9fab95bae27ff6828dab_img.jpg\)
HyperX | High Quality Gaming Gear](#)