 Hyperice
Hyperice
Hypervolt Go 2
Massage Gun



Hyperice Hypervolt Go 2 Massage Gun User Guide

[Home](#) » [Hyperice](#) » Hyperice Hypervolt Go 2 Massage Gun User Guide 

Contents

- [1 Hyperice Hypervolt Go 2 Massage Gun](#)
- [2 Product Usage Instructions](#)
- [3 Side view](#)
- [4 Rear view](#)
- [5 Before you start](#)
- [6 Start your session](#)
- [7 Documents / Resources](#)
 - [7.1 References](#)
- [8 Related Posts](#)



Hyperice Hypervolt Go 2 Massage Gun



Specifications

- Product Name: Hypervolt Go 2
- Head Attachment: Included
- Battery Level Indicator: LED band
- Speed Settings: 3 levels (1-3)
- Charging Port: Hyperice USB-C
- Charging Time: Up to 4 hours for a full charge

Product Usage Instructions

Getting Started

Download the Hyperice App and register your device at hyperice.com/register-product.

Charging

Plug in your Hypervolt Go 2 using the provided Hyperice USB-C until fully charged. The battery may take up to four hours to charge completely.

Choosing Head Attachments

Select your desired head attachment and firmly insert it into the opening.

Powering Up

To turn on your device, press and hold the power/speed setting button for two seconds until the battery level indicator illuminates. Release the button to power on.

Adjusting Speeds

Press the power/speed setting button to cycle through the speed settings (1-3). The white lights on the back will indicate the current speed level.

Recharging

A full charge is indicated by a green and fully illuminated LED light band on the handle. Only use the provided Hyperice charger for recharging.

Caring for Your Device

Ensure the power is off and the charger is disconnected before cleaning. Use a damp, clean cloth to wipe the

device gently. Store it in a clean, cool, dry place away from direct sunlight when not in use.

Important Note

Please read the Operating Instructions before first use for additional details.

Frequently Asked Questions (FAQ)

- **Q: How do I know when my Hypervolt Go 2 is fully charged?**

A: A full charge is indicated when the LED light band on the handle remains green and fully illuminated.

- **Q: Can I use any charger to recharge my Hypervolt Go 2?**

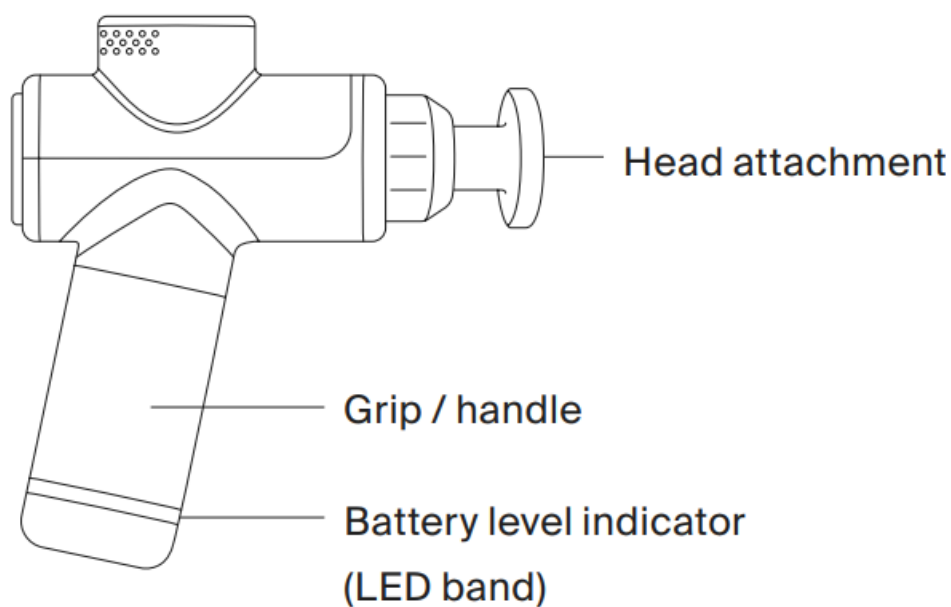
A: No, only use the provided Hyperice charger to recharge your device.

- **Q: How should I clean my Hypervolt Go 2?**

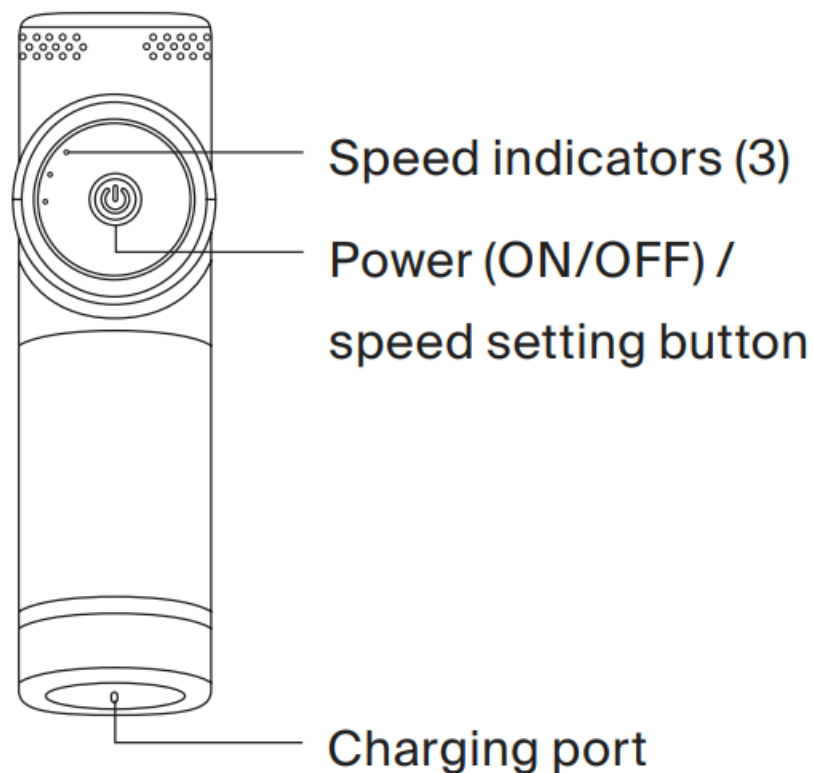
A: Ensure the power is off and wipe the device gently with a damp, clean cloth.

Meet your new Hypervolt Go 2

Side view



Rear view



Before you start

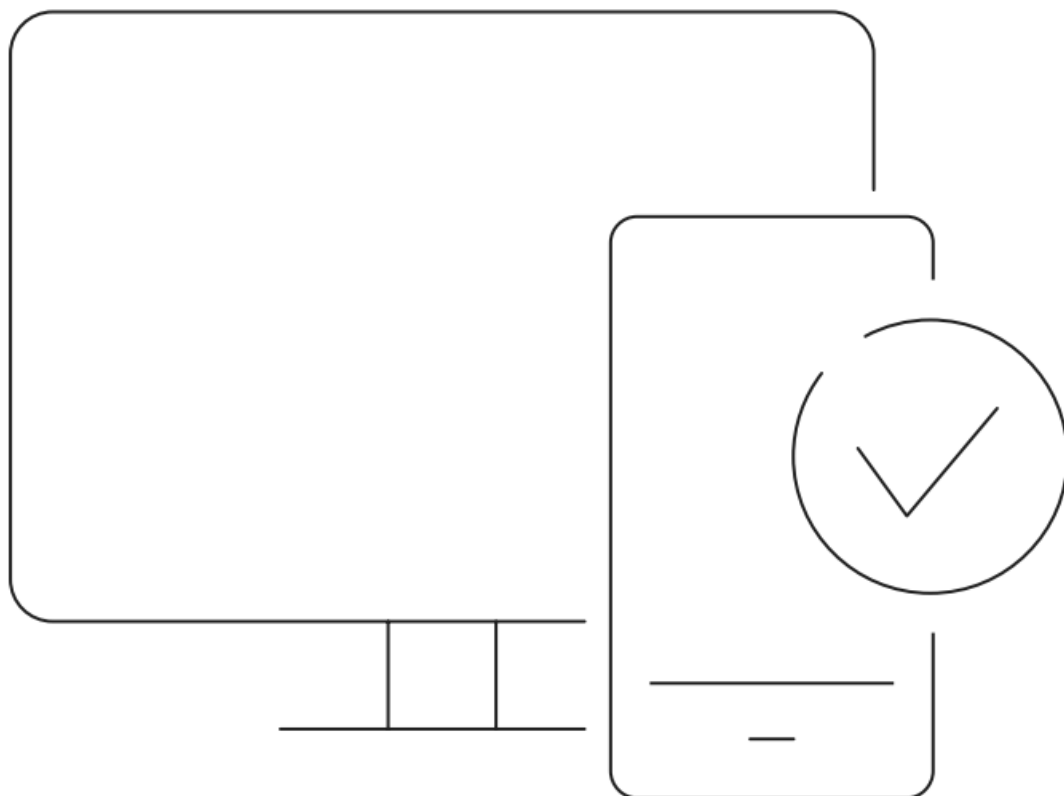
Download the Hyperice App

Get the most out of your Hypervolt Go 2, or any Hyperice device with the Hyperice App. Follow along to guided routines, track your progress, and get tips and tricks from the world's best pros.



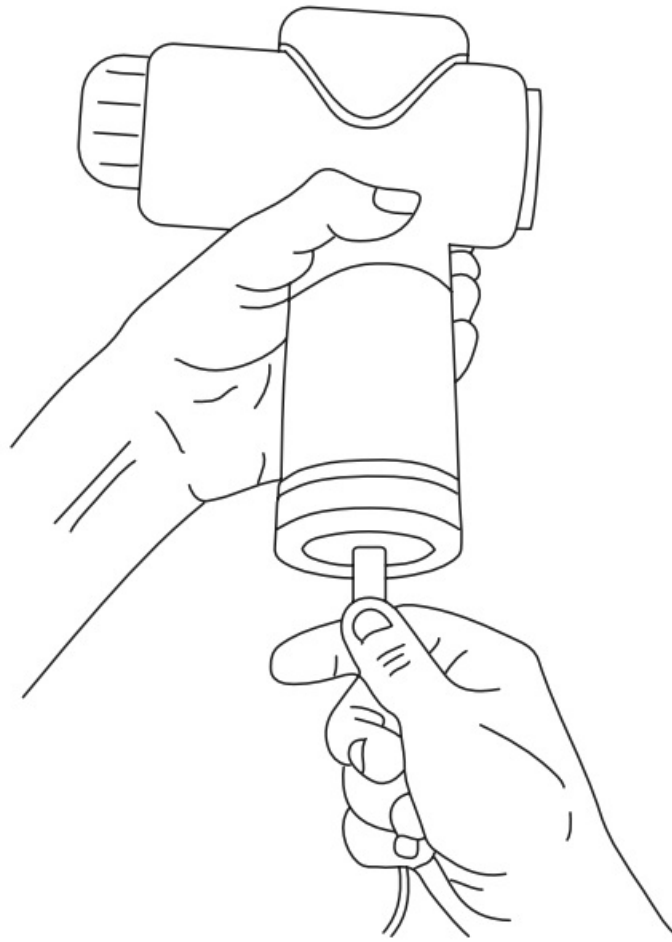
Register your device

Activate your warranty and ensure easy returns, repairs, or refunds at hyperice.com/register-product.



Charge your new Hypervolt Go 2

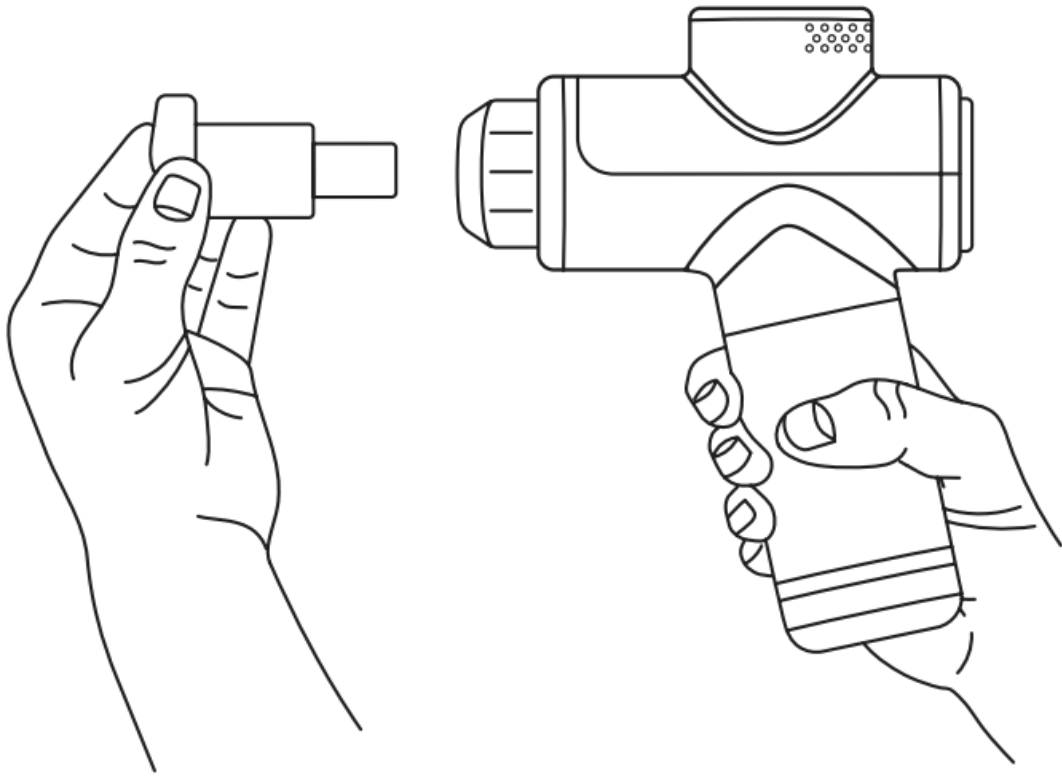
Plug in your new Hypervolt Go 2 with the provided Hyperice USB-C until fully charged. The battery will take up to four hours to full charge.



Start your session

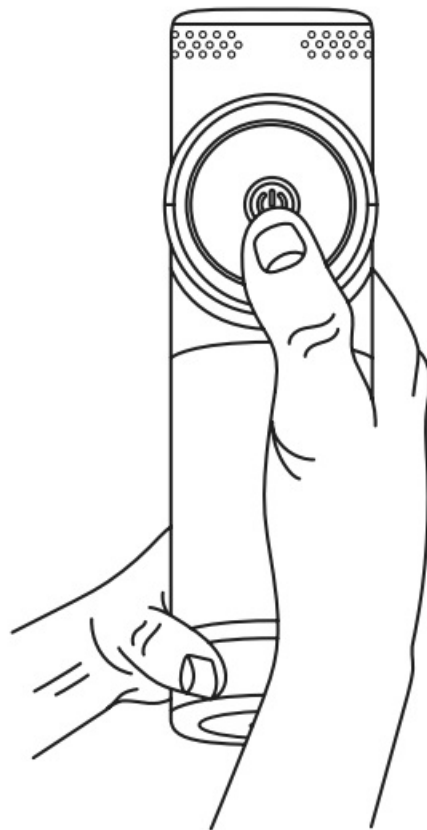
Choosing head attachments

Choose desired head attachment and insert directly into the opening while pushing firmly.



Powering up

Turn your Hypervolt Go 2 ON by pressing the power/speed setting button. Hold for two seconds until the battery level indicator (LED band) illuminates, then release.



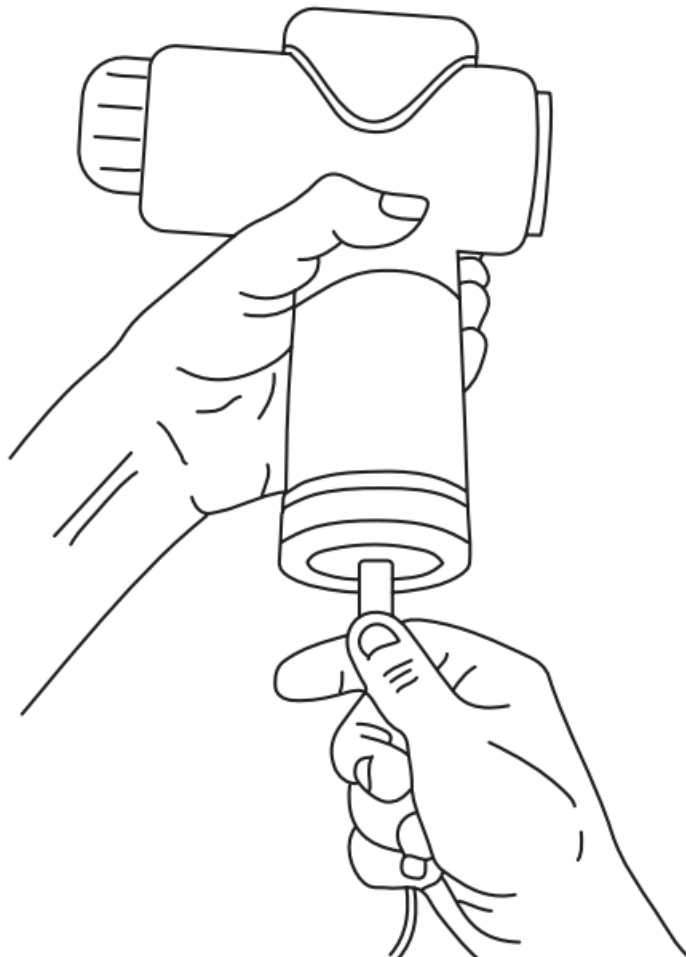
Adjusting speeds

Choose your desired speed (1-3) by pressing the power/speed setting button once per speed. The white lights on the back will indicate the current speed.



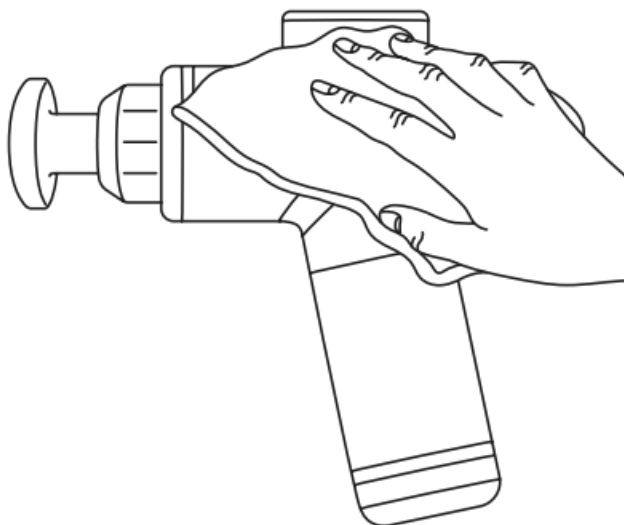
Recharging

Full charge is indicated when the LED light band on the handle remains green and fully illuminated. Only use the provided Hyperice charger.



Caring for your Hypervolt Go 2

Make sure the power is OFF and the battery charger is not attached. Use a damp, clean cloth to gently wipe your device. Store in a clean, cool, dry place, out of direct sunlight, when not in use.



We're here for you


HyperCare®

Get award-winning support from our HyperCare team – a group of specialists dedicated to your overall well-being and expert guidance on Hyperice products.

- 1.855.734.7224
- hyperice.com
- customersupport@hyperice.com

If outside of the United States, please visit hyperice.com/contact

Documents / Resources

<p>Let's get started</p> 	<p>Hyperice Hypervolt Go 2 Massage Gun [pdf] User Guide Hypervolt Go 2 Massage Gun, Go 2 Massage Gun, Gun</p>
--	---

References

- hyperice.com/register-product
- [User Manual](#)

[Manuals+](#), [Privacy Policy](#)

This website is an independent publication and is neither affiliated with nor endorsed by any of the trademark owners. The "Bluetooth®" word mark and logos are registered trademarks owned by Bluetooth SIG, Inc. The "Wi-Fi®" word mark and logos are registered trademarks owned by the Wi-Fi Alliance. Any use of these marks on this website does not imply any affiliation with or endorsement.