

HYPEREV PS5 Console Gaming Booster Router



HYPEREV PS5 Console Gaming Booster Router User Guide

[Home](#) » [HYPEREV](#) » HYPEREV PS5 Console Gaming Booster Router User Guide 

Contents

- [1 HYPEREV PS5 Console Gaming Booster Router](#)
- [2 Specifications](#)
- [3 Product Usage Instructions](#)
- [4 FAQ](#)
- [5 Configuring Ports And Setup](#)
- [6 Supported Consoles](#)
- [7 GearUP Console Booster App](#)
- [8 Connect To Wi-fi](#)
- [9 Status Light Indications](#)
- [10 FCC STATEMENT](#)
- [11 Documents / Resources](#)
 - [11.1 References](#)
- [12 Related Posts](#)



HYPEREV PS5 Console Gaming Booster Router



Specifications

- **Brand:** GearUP
- **Model:** HYPEREV
- **Supported Consoles:** PlayStation series, Xbox series, Switch, Oculus Quest 2, Steam Deck

Product Usage Instructions

GearUP Console Booster App

- Download the GearUP Console Booster App from the App Store or Google Play Store. Alternatively, scan the QR code provided to download the app.
- This app allows you to enhance your consoles and manage different configurations.

Setup

- Connect the supplied power adapter and network cables to the HYPEREV device.
- A red light indicates successful power connection.
- The light will turn green once the device detects an internet connection.

Connect To Wi-fi

- Locate the HYPEREV Wi-Fi network on your mobile device's wireless settings. Connect to it using the SSID and password found on the back label.

Connect to HYPEREV

- Open the GearUP Console Booster app, log in, and bind your HYPEREV device to your account by clicking on the card.

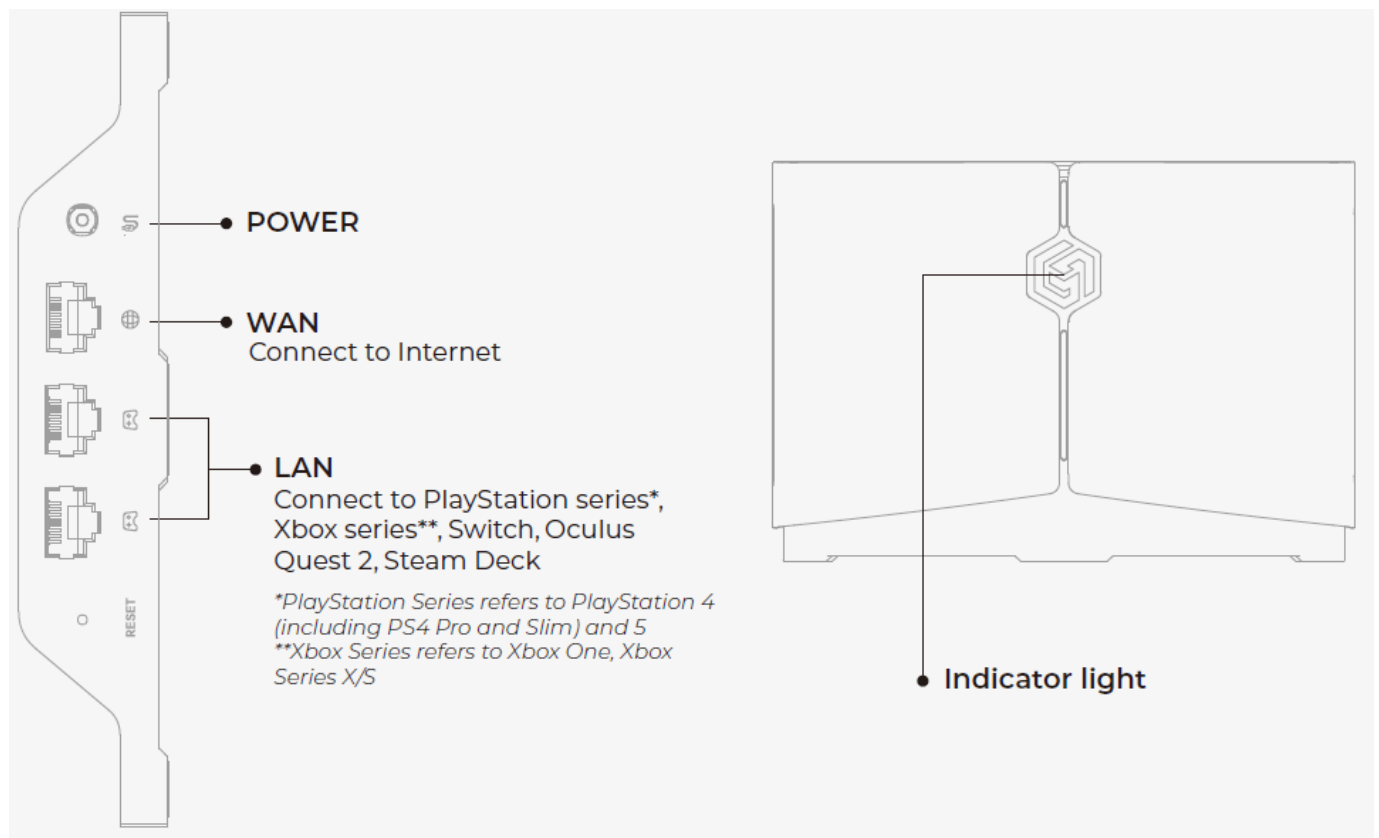
Start Your Game And Play To Win

- Connect your console(s) to the HYPEREV device using either an ethernet or Wi-Fi connection.
- Log in to the app and select the games you want to boost network performance for by pressing the Boost button.

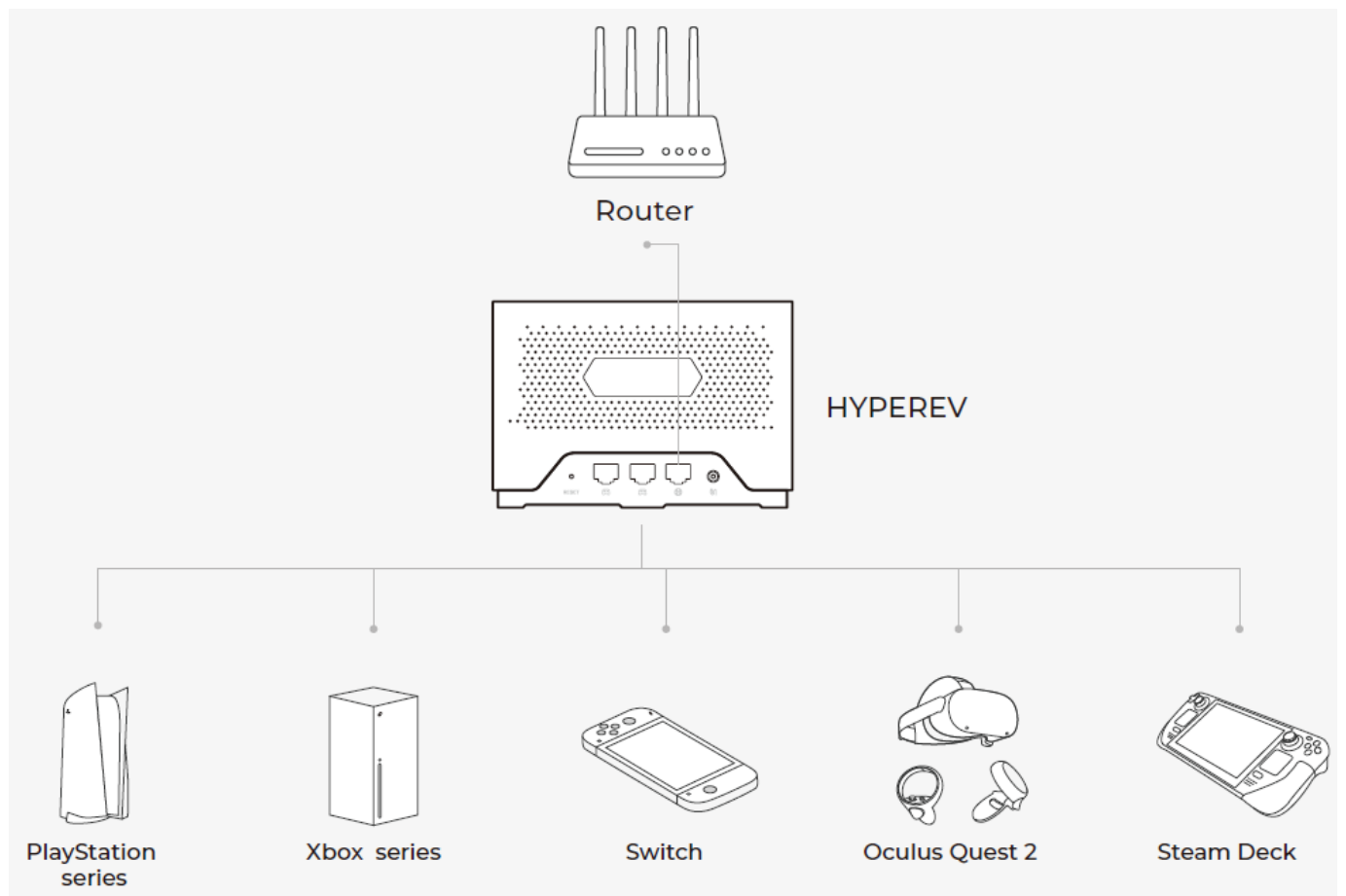
FAQ

- **Q:** Do I need a membership for full access to HYPEREV features?
- **A:** Yes, a membership is required to unlock all features of HYPEREV. Without a membership, you can only access router-related features and limited free game boosting services. Visit booster.gearupglobal.com for more information on memberships.

Configuring Ports And Setup

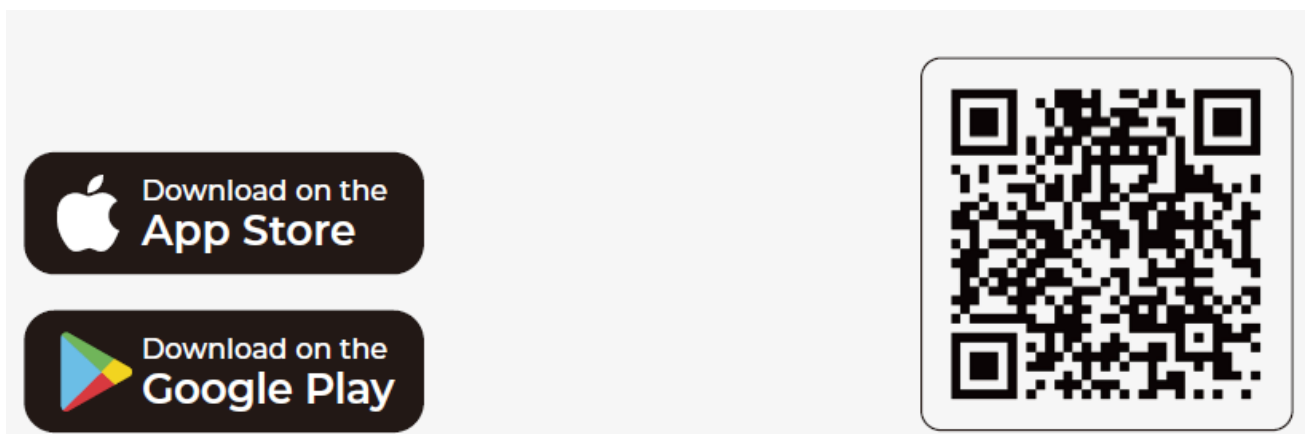


Supported Consoles



GearUP Console Booster App

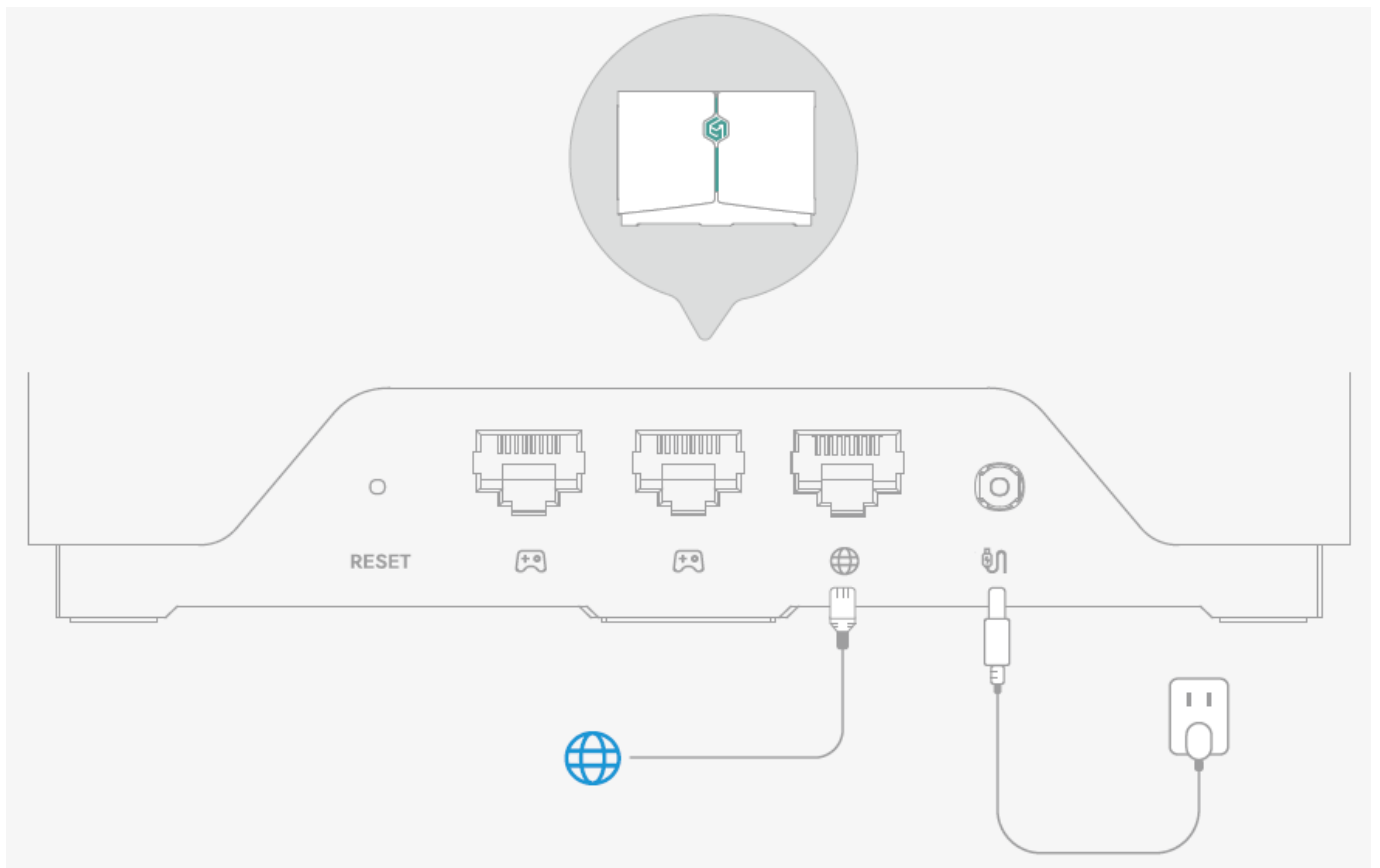
- Find and download the GearUP Console Booster App on the App Store or Google Play Store.
- You can also scan the QR code below to download the app and complete the setup.
- With the app, you can boost your consoles and manage various configurations.



- Scan the QR code above with your mobile phone and download the App “GearUP Console Booster”

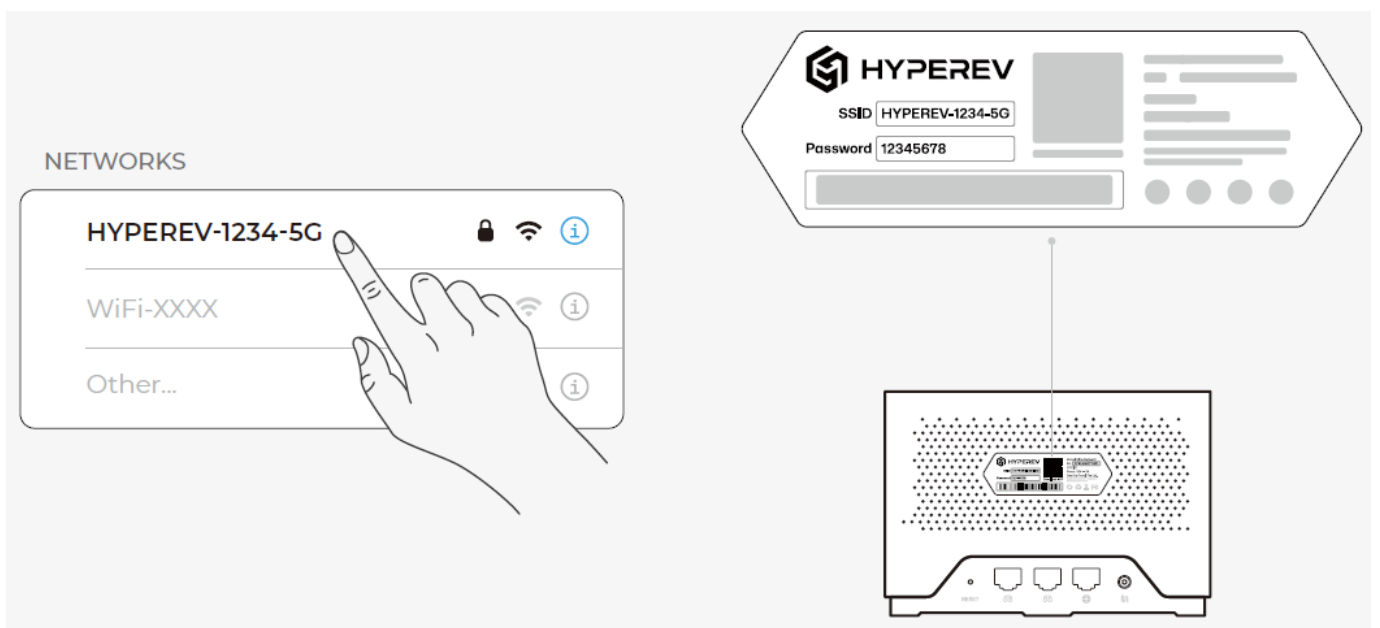
Setup

Connect the provided power adapter and network cables to the HYPERREV. A red light indicates that the power supply is now successfully connected. Once the device detects an internet connection, the light will turn green.



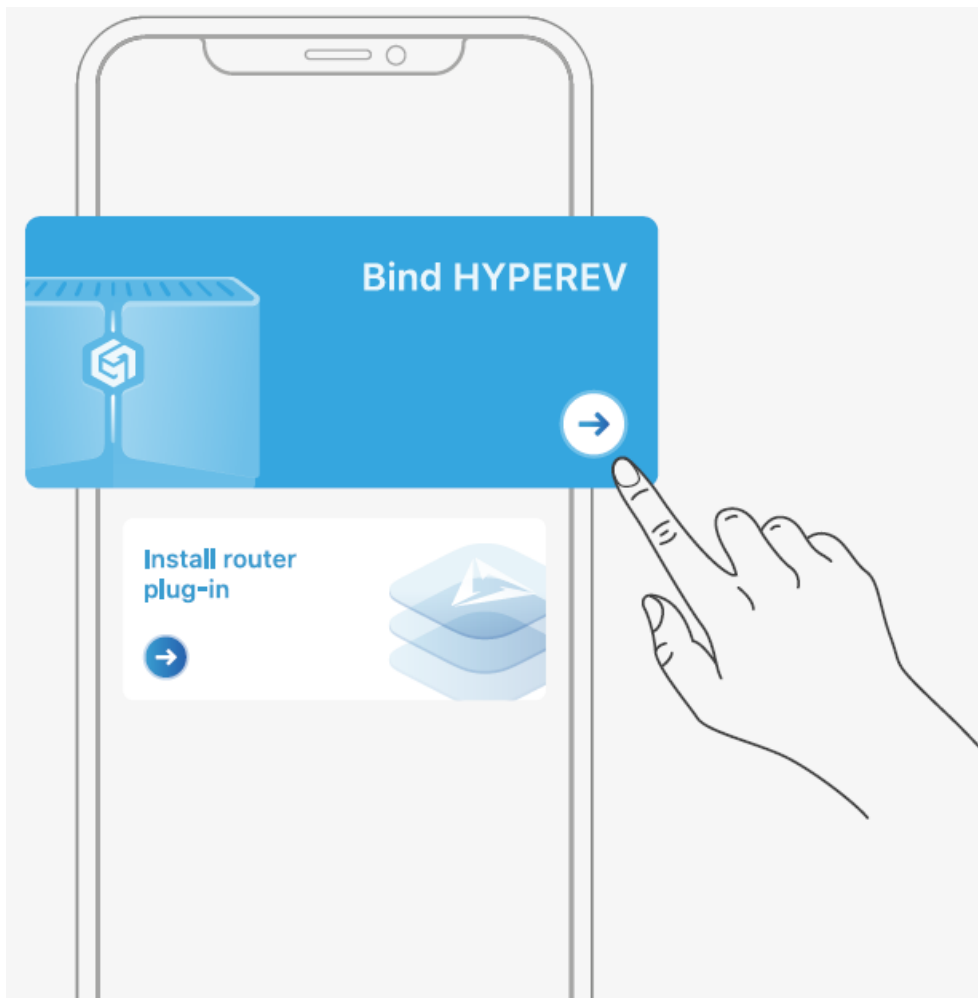
Connect To Wi-fi

- Use your mobile device's wireless connection settings to search for and connect to the HYPEREV Wi-Fi network.
- You will be able to locate the SSID and password on the back label.



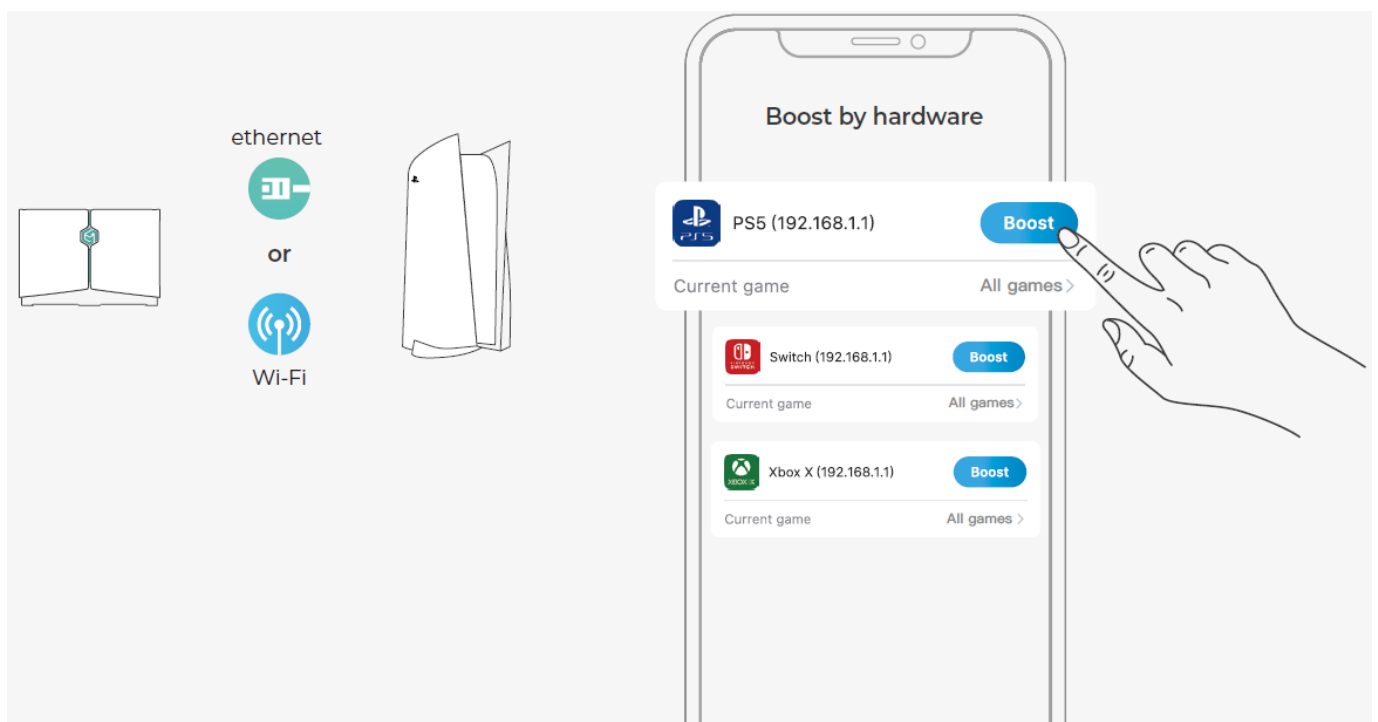
Connect to HYPEREV

- Open and log in GearUP Console Booster, click the card to bind HYPEREV to your account.



Start Your Game And Play To Win!

- Using either an ethernet or Wi-Fi connection, connect your console(s) to the HYPEREV device.
- Once you log in, you can choose which games you want to boost the network performance of, by pressing the “Boost” button.

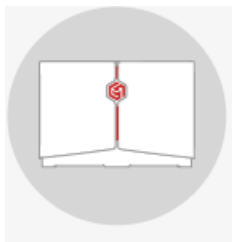


Status Light Indications



Red

Constantly illuminate: Powered, but no Internet connection



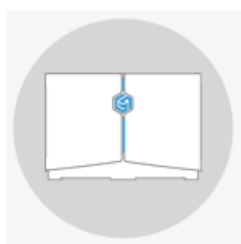
Green

Constantly illuminate: Powered, and connected to the Internet Blinking: Entering boosting



Blue

Constantly illuminate: Powered, connected to the Internet and boosting in progress



Membership And Legal Information

- Thank you for your interest in HYPEREV, the hardware product from GearUp Portal Pte Ltd.
- As you may know, HYPEREV requires a membership to unlock all of its features. Without a membership, you will only be able to access the router-related features and take advantage of the limited free game boosting services.
- For more information about our membership, please visit booster.gearupglobal.com.

FCC STATEMENT

FCC ID: 2A98H-WH02

This device complies with Part 15 of the FCC rules. Operation is subjected to the following two conditions:

1. this device may not cause harmful interference, and
2. this device must accept any interference received, including interference that may cause undesired operation.

Changes or modifications not expressly approved by the party responsible for compliance could void your authority

to operate the equipment.

The device for operation in the band 5150–5250 MHz is only for indoor use to reduce the potential for harmful interference to co-channel mobile satellite systems:

This device contains licence-exempt transmitter(s) and receiver(s) that comply with Innovation, Science and Economic

Development Canada's licence-exempt RSS(s). operation is subject to the following two conditions:

1. This device may not cause interference; and
2. This device must accept any interference, including interference that may cause undesired operation of the device.


This device complies with FCC radiation exposure limits set forth for an uncontrolled environment. The distance between user and the product should be no less than 20cm.

This equipment has been tested and found to comply with the limits for a Class B digital device, pursuant to part 15 of the FCC Rules. These limits are designed to provide reasonable protection against harmful interference in a residential installation. This equipment generates uses and can radiate radio frequency energy and, if not installed and used in accordance with the instructions, may cause harmful interference to radio communications. However, there is no guarantee that interference will not occur in a particular installation. If this equipment does cause harmful interference to radio or television reception, which can be determined by turning the equipment off and on, the user is encouraged to try to correct the interference by one or more of the following measures:

- Reorient or relocate the receiving antenna.
- Increase the separation between the equipment and receiver.
- Connect the equipment into an outlet on a circuit different from that to which the receiver is connected.
- Consult the dealer or an experienced radio/TV technician for help.

The device meets the exemption from the routine evaluation limits in section 2.5 of RSS 102 and compliance with RSS-102 RF exposure, users can obtain Canadian information on RF exposure and compliance.

Documents / Resources

	HYPEREV PS5 Console Gaming Booster Router [pdf] User Guide PS5, PS5 Console Gaming Booster Router, Console Gaming Booster Router, Gaming Booster Router, Booster Router, Router
---	--

References

- [GearUP Booster - Reduce Lag for All Games on Any Device](#)
- [User Manual](#)

[Manuals+](#), [Privacy Policy](#)

This website is an independent publication and is neither affiliated with nor endorsed by any of the trademark owners. The "Bluetooth®" word mark and logos are registered trademarks owned by Bluetooth SIG, Inc. The "Wi-Fi®" word mark and logos are registered trademarks owned by the Wi-Fi Alliance. Any use of these marks on this website does not imply any affiliation with or endorsement.