

HYPER Pulsefire Haste 2 Core Wireless Gaming Mouse



# HYPER Pulsefire Haste 2 Core Wireless Gaming Mouse User Guide

[Home](#) » [HYPER](#) » HYPER Pulsefire Haste 2 Core Wireless Gaming Mouse User Guide 

## Contents

- [1 HYPER Pulsefire Haste 2 Core Wireless Gaming Mouse](#)
- [2 Product Information](#)
- [3 Product Usage Instructions](#)
- [4 Frequently Asked Questions](#)
- [5 Overview](#)
- [6 Installation](#)
- [7 Usage](#)
- [8 Bluetooth Pairing](#)
- [9 DPI Presets](#)
- [10 HyperX NGENUITY Software](#)
- [11 Questions or Setup Issues](#)
- [12 Battery/TX Power Info](#)
- [13 Documents / Resources](#)
  - [13.1 References](#)



**HYPER Pulsefire Haste 2 Core Wireless Gaming Mouse**



## Product Information

### Product Specifications:

- **Brand:** HyperX
- **Model:** Pulsefire Haste 2 Core
- **Type:** Wireless Gaming Mouse
- **DPI Presets:** 400/800/1600/3200 (Max DPI: 12000)
- **Power Source:** 1x AAA Battery

### Product Usage Instructions

- **Installation:**
  - Remove the magnetic battery cover.
  - Insert or remove a 1x AAA battery as needed.
  - Reinstall the magnetic battery cover.
- **2.4G Wireless Mode:**
  - Switch the mouse to 2.4G power mode.
  - Connect the wireless adapter to a PC or game console within 20 cm of the mouse for optimal performance.
- **Bluetooth Mode:**
  - Switch the mouse to Bluetooth power mode.
  - Initiate Bluetooth pairing by searching for and connecting to “Haste 2 Core” in your computer’s Bluetooth settings.
- **Bluetooth Pairing:**

To pair via Bluetooth, hold down the left-click button, right-click button, and DPI button simultaneously until the mouse flashes blue.

- **DPI Presets:**

The mouse comes with 4 default DPI presets: 400 DPI (red), 800 DPI (blue), 1600 DPI (yellow), and 3200 DPI (green). Maximum DPI supported is up to 12000 DPI.

## Frequently Asked Questions

- **Q: How do I change the DPI settings on the HyperX Pulsefire Haste 2 Core mouse?**

A: To change DPI settings, press the DPI button on the mouse to cycle through the available presets.

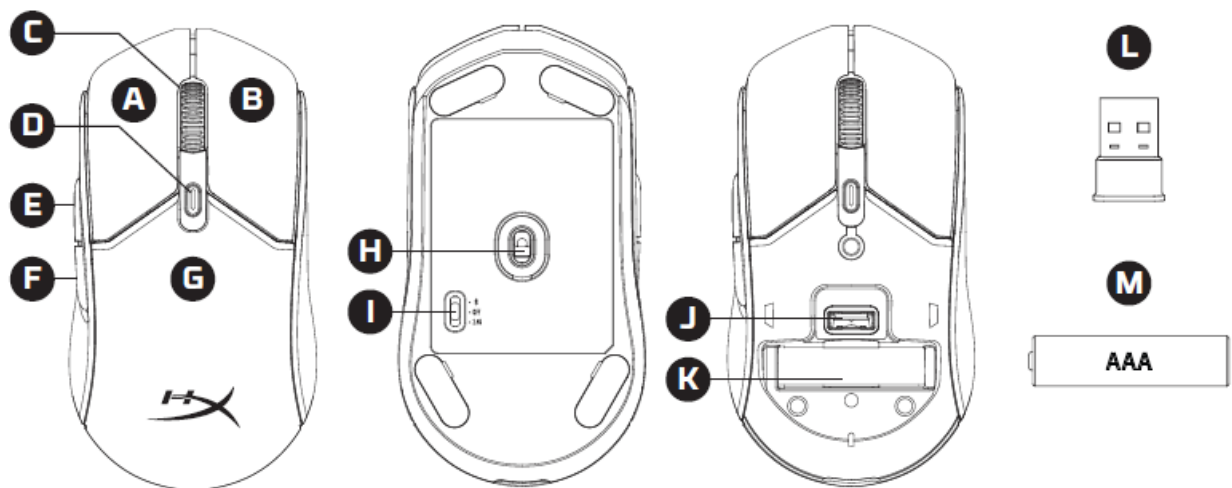
- **Q: Where can I download software to personalize settings for the HyperX Pulsefire Haste 2 Core mouse?**

A: You can download the HyperX NGENUITY software from [hyperx.com/ngenuity](https://hyperx.com/ngenuity) to customize lighting, DPI levels, macros, etc.

- **Q: How do I contact HyperX support for configuration assistance?**

A: For any questions or issues related to configuration, you can reach out to HyperX technical support or refer to the user manual on [hyperx.com/support](https://hyperx.com/support).

## Overview

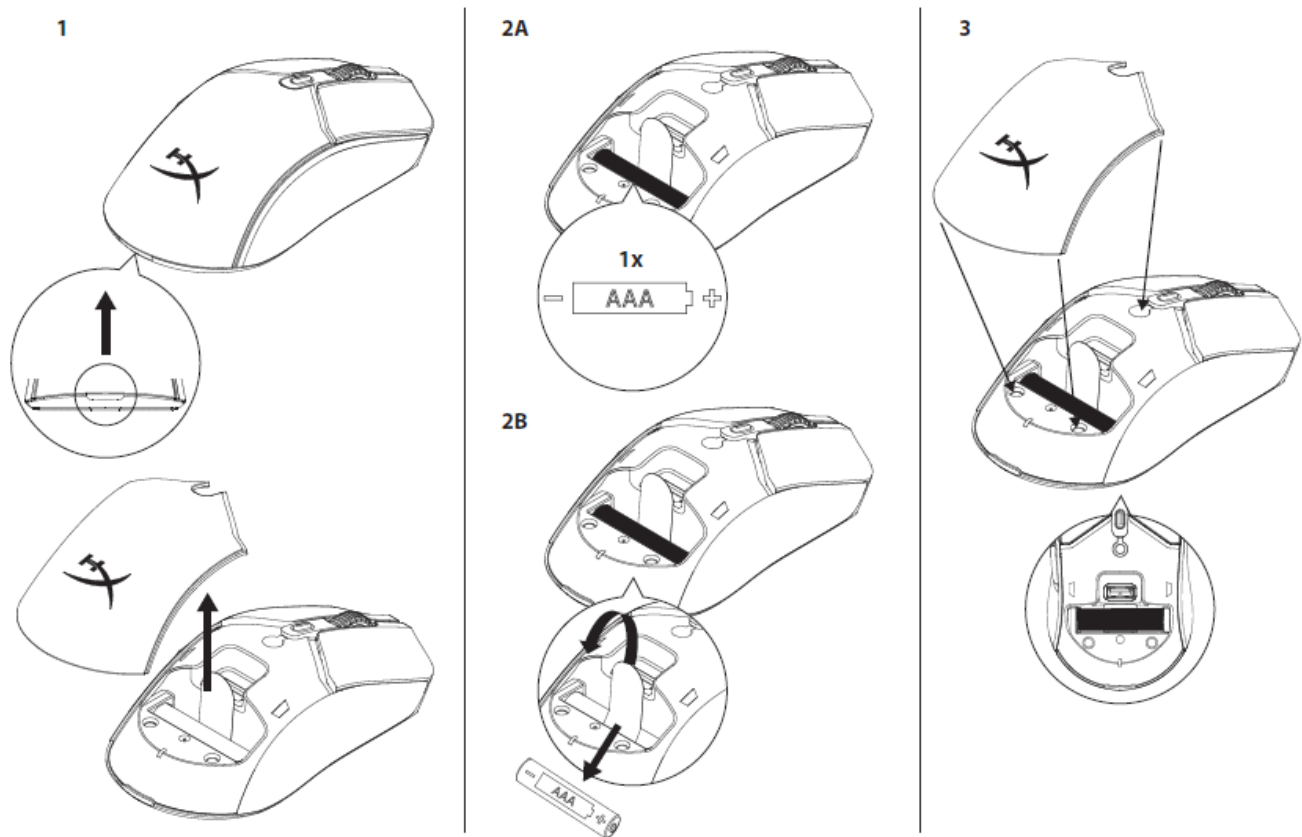


- **A.** Left-click button
- **B.** Right-click button
- **C.** Mouse wheel
- **D.** DPI button
- **E.** Forward button
- **F.** Back button
- **G.** Magnetic battery cover
- **K.** AAA battery slot
- **L.** Wireless adapter
- **M.** 1x AAA battery

## Installation

1. Remove magnetic battery cover

2. Insert (2A) or Remove (2B) 1x AAA Battery
3. Install magnetic battery cover

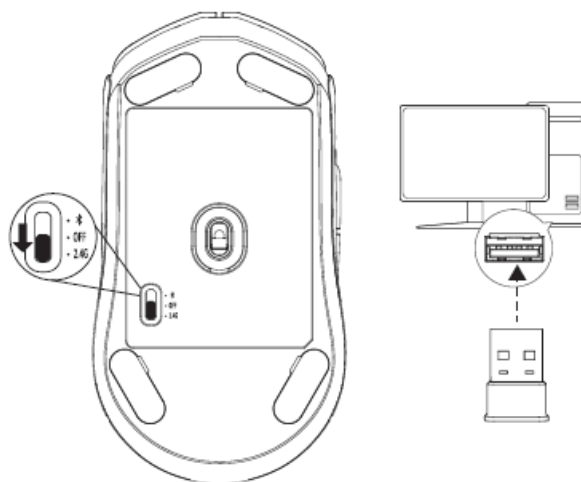


## Usage

### 2.4G Wireless Mode

1. Switch the mouse to 2.4G power mode.
2. Connect the wireless adapter to a PC or game console.

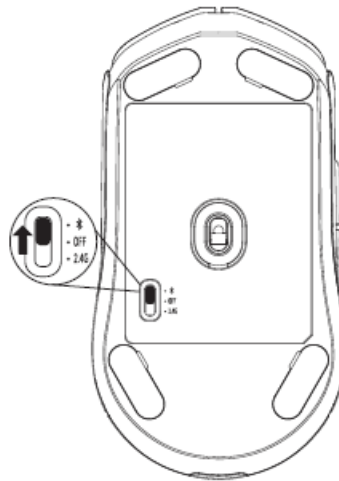
For optimal placement, keep the wireless adapter within 20 cm of the mouse.



### Bluetooth Mode

1. Switch the mouse to Bluetooth power mode. The mouse will flash blue on the first setup.

2. Go to your computer's Bluetooth settings, search and connect to "Haste 2 Core".

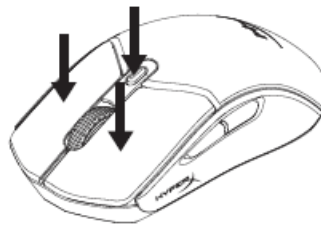


## Bluetooth Pairing

Hold the left-click button, right-click button, and DPI button simultaneously until the mouse flashes blue.

## DPI Presets

- **There are 4 default DPI presets:** 400 DPI (red) | 800 DPI (blue) | 1600 DPI (yellow) | 3200 DPI (green).
- **Max DPI:** Up to 12000 DPI.



## HyperX NGENUITY Software

To customize lighting, DPI, macro settings, and more, download HyperX NGENUITY software at [hyperx.com/ngenuity](https://hyperx.com/ngenuity)

## Questions or Setup Issues

Contact the HyperX support team or see the user guide at [hyperx.com/support](https://hyperx.com/support).

## Battery/TX Power Info

### Battery Information

- **Battery Type:** 1.5V, 1x AAA Battery (included)
- The battery can be replaced by user


## Radio Technology

- **Frequency Bands:** BT, 2.4GHz
- Maximum Transmit Power EIRP (mW)
- **Mouse:** ~ 10mW
- **Adapter:** ~ 10mW
- **FCC ID:** B94-HXMS231, B94-PF002WA
- **IC:** 466C-HXMS231, 466C-PF002WA



©Copyright 2023 HyperX and the HyperX logo are registered trademarks or trademarks of HP Inc. in the U.S. and/or other countries. All registered trademarks and trademarks are property of their respective owners.

## Documents / Resources

	<p><a href="#">HYPER Pulsefire Haste 2 Core Wireless Gaming Mouse</a> [pdf] User Guide  Pulsefire Haste 2 Core Wireless Gaming Mouse, Pulsefire Haste 2 Core, Wireless Gaming Mouse, Gaming Mouse, Mouse</p>
---	--

## References

- [NGENUITY – HyperX US](#)
- [Support – HyperX ROW](#)
- [User Manual](#)

[Manuals+](#), [Privacy Policy](#)

This website is an independent publication and is neither affiliated with nor endorsed by any of the trademark owners. The "Bluetooth®" word mark and logos are registered trademarks owned by Bluetooth SIG, Inc. The "Wi-Fi®" word mark and logos are registered trademarks owned by the Wi-Fi Alliance. Any use of these marks on this website does not imply any affiliation with or endorsement.