



## Contents [ [hide](#) ]

- [1 HYPER GO GO H12Y 1:12 RC Climbing Car](#)
- [2 Safety Precautions](#)
- [3 Operating Your Model Safely](#)
- [4 Precautions for Battery Use](#)
- [5 Electronic device connection method](#)
- [6 Placement](#)
- [7 H12Y Sensorless brushless ESC](#)
- [8 Transmitter](#)
- [9 Power switch](#)
- [10 Lighting instructions](#)
- [11 Charge](#)
- [12 Gearbox subassembly](#)
- [13 Front axle subassembly](#)
- [14 Documents / Resources](#)
  - [14.1 References](#)

***HYPER GO***

**HYPER GO GO H12Y 1:12 RC Climbing Car**



The instruction sheet for this product is just for your reference. We reserve the right to make changes or adjustments on the product without prior notification. Please refer to the official information.

### **Warning**

Choking hazard! This product contains small parts. NOT suitable for children under 3 years. Contains electrical components and should be kept dry at all times. Regularly check the battery charger wires, plugs and shell and other components for damage. DO NOT use if any part is damaged.

### **Safety Precautions**

- It is a radio control model, not a toy!
- In order to enjoy running the car, you need to finish assembly before operation. Do routine maintenance work after operation. Replacement parts and option parts are available separately.
- Improper usage with Alkaline cells or rechargeable batteries may damage the electronics for the car or the radio.

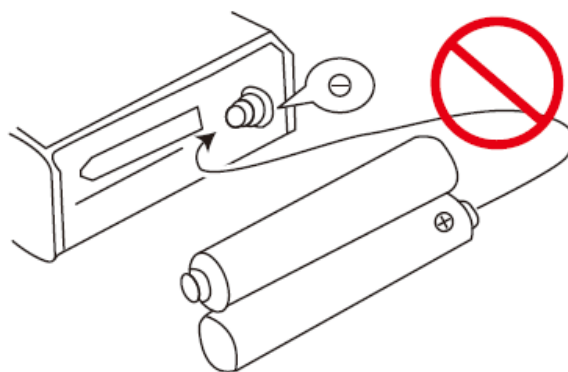
**In order to operate the car safely. Be sure that you have observed the following points:**

Please follow the points as below in order to prevent accident from happening to the car and people.

- Be sure to read thoroughly the manual before you begin. Fresh user should seek advice from people having rich experience in order to assemble the model correctly.
- Cutters, nippers and screwdrivers need careful handling.



- Do not expose this model to high temperature, humidity or direct sunlight.
- Never reverse connection/disassemble the battery. This may lead to damage and leakage.



- As the product contains small and sharp parts, assemble and store this product only in places out of the reach of children.
- When the model is not in use, always turn off the receiver and transmitter. Furthermore, disconnect the batteries and remove them from the model and the transmitter. This may be dangerous such as overheat and leakage.



## Warnings & Cautions

1. Detachable small parts should be stored safely and out of reach of children.
2. If interference is experienced, turn the model off and try it again in a different area.
3. Transmitter will not function correctly if the batteries are low. Please replace the batteries.
4. Please discard old/used batteries in a safe manner. Consider your environment!
5. Please store the remote control model in cool, dry place.
6. DO NOT expose to fire or high temperatures, do not store in moist place.
7. Once the battery get wet, wipe immediately with a soft dry cloth. If the battery any deformation, please stop using.
8. If you don't use the model for a long time, please raise the chassis to let the wheels hang in the air.

## **Operating Your Model Safely**

Do NOT operate the model in the following places and situations.

(Non-observance may lead to accident!)

- Operate your model in spacious and safe areas! Do not operate it:
  - On road!
  - In places where children and many people gather.
  - In residential districts and parks!
  - Do not operate the model on public roads, in crowded places and near infant as it may cause accidents.
  - Indoors and in limited space! Non-observance may result in personal injury and property damage!
- The car must stop immediately and check for the reasons when it is operating abnormal. As long as the problem is not cleared, do NOT operate it! This may lead to further trouble and unforeseen accidents!
- Always check the radio batteries! With weak dry batteries, transmission and reception of the radio would fall off. You may lose control of your model in such condition. This may also cause serious accidents!
- Keep in mind that people around you may also operate a radio control model! NEVER share the same frequency with somebody else at the same time! Otherwise, Radio signals will be mixed up and you will lose control to your model. This may lead to

accidents.

- Do NOT put fingers or any objects inside rotating and moving parts!
- Right after use, do NOT touch the motor! Danger of burning yourself!

## **Precautions for Battery Use**

1. Transmitter uses 3×1.5V “AA” batteries.
2. Please pay attention to correct polarity when replacing batteries.
3. Rechargeable batteries should be charged under adult supervision.
4. Do not mix old and new batteries.  
Do not mix alkaline, standard (carbon-zinc), or rechargeable batteries.
5. After the battery is exhausted, the model should be removed.
6. Exhaust battery should be safely disposed!
7. DO NOT short circuit any terminals.
8. DO NOT attempt to recharge non rechargeable batteries.
9. Remove batteries from the model when charging.
10. DO NOT put batteries into a fire or into water.
11. The rated input voltage battery charger MUST be suitable for your mains power voltage.
12. During charging it is quite normal for the charger and batteries to heat up.
13. Do not swallow battery!
14. Store only in cool, dry and dark places and should be kept out of the children!
15. When the battery leaks the liquid and let it into your eyes, please right away rinse them and consult an ophthalmologist.

**Warning:** Changes or modifications to this unit not expressly approved by the party responsible for compliance could void the user’s authority to operate the equipment.

**NOTE:** This equipment has been tested and found to comply with the limits for a Class B digital device, pursuant to Part 15 of the FCC Rules. These limits are designed to provide reasonable protection against harmful interference in a residential installation. This equipment generates, uses and can radiate radio frequency energy and, if not installed and used in accordance with the instructions, may cause harmful interference to radio communications.

However, there is no guarantee that interference will not occur in a particular installation. If this equipment does cause harmful interference to radio or television reception, which can be determined by turning the equipment off and on, the user is encouraged to try to correct the interference by one or more of the following measures:

- Reorient or relocate the receiving antenna.
- Increase the separation between the equipment and receiver.
- Connect the equipment into an outlet on a circuit different from that to which the receiver is connected.
- Consult the dealer or an experienced radio/TV technician for help.

This device complies with Part 15 of the FCC Rules. Operation is subject to the following two conditions:

- (1) this device may not cause harmful interference, and
- (2) this device must accept any interference received, including interference that may cause undesired operation.

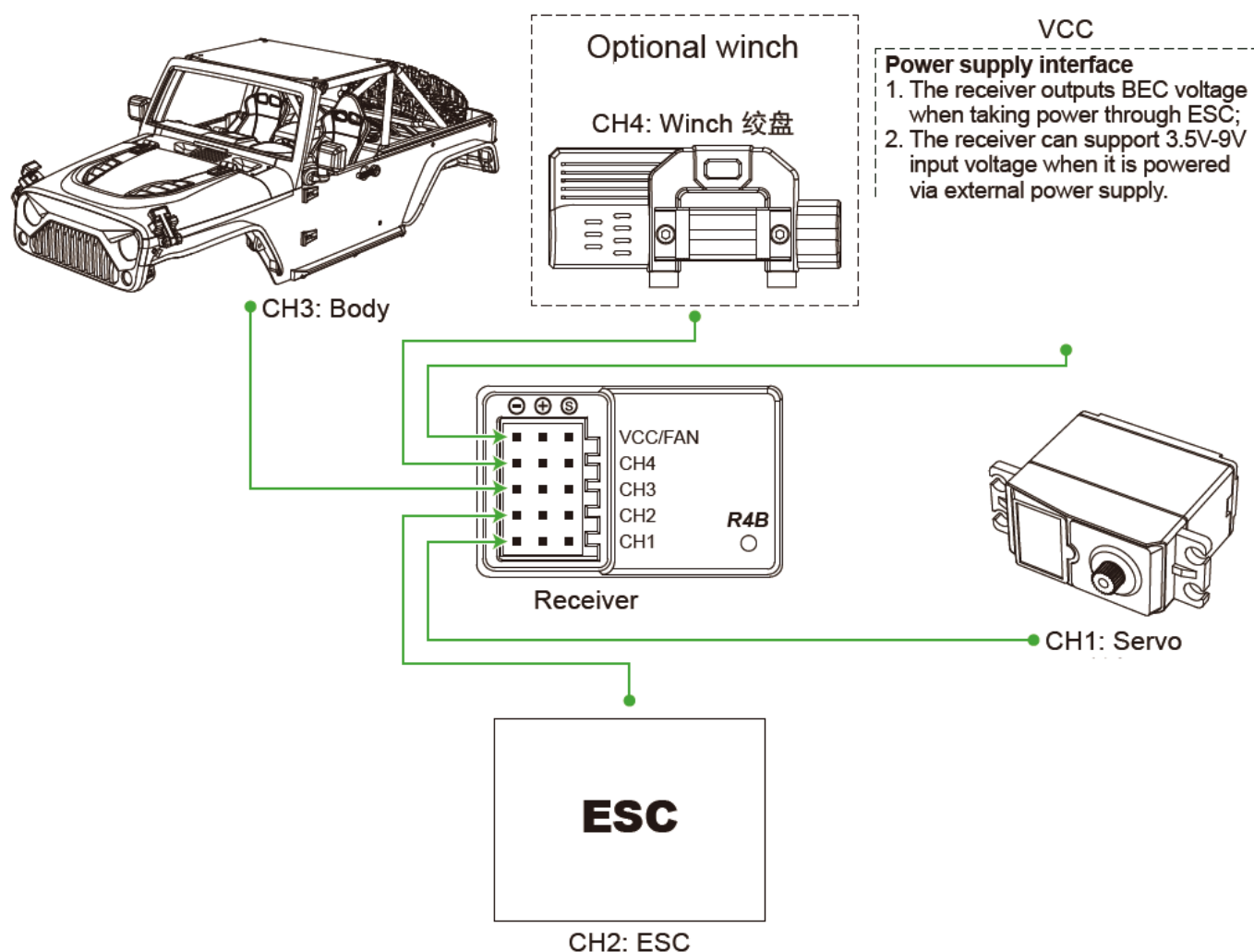
### **RF Exposure Information**

The device has been evaluated to meet general RF exposure requirement.

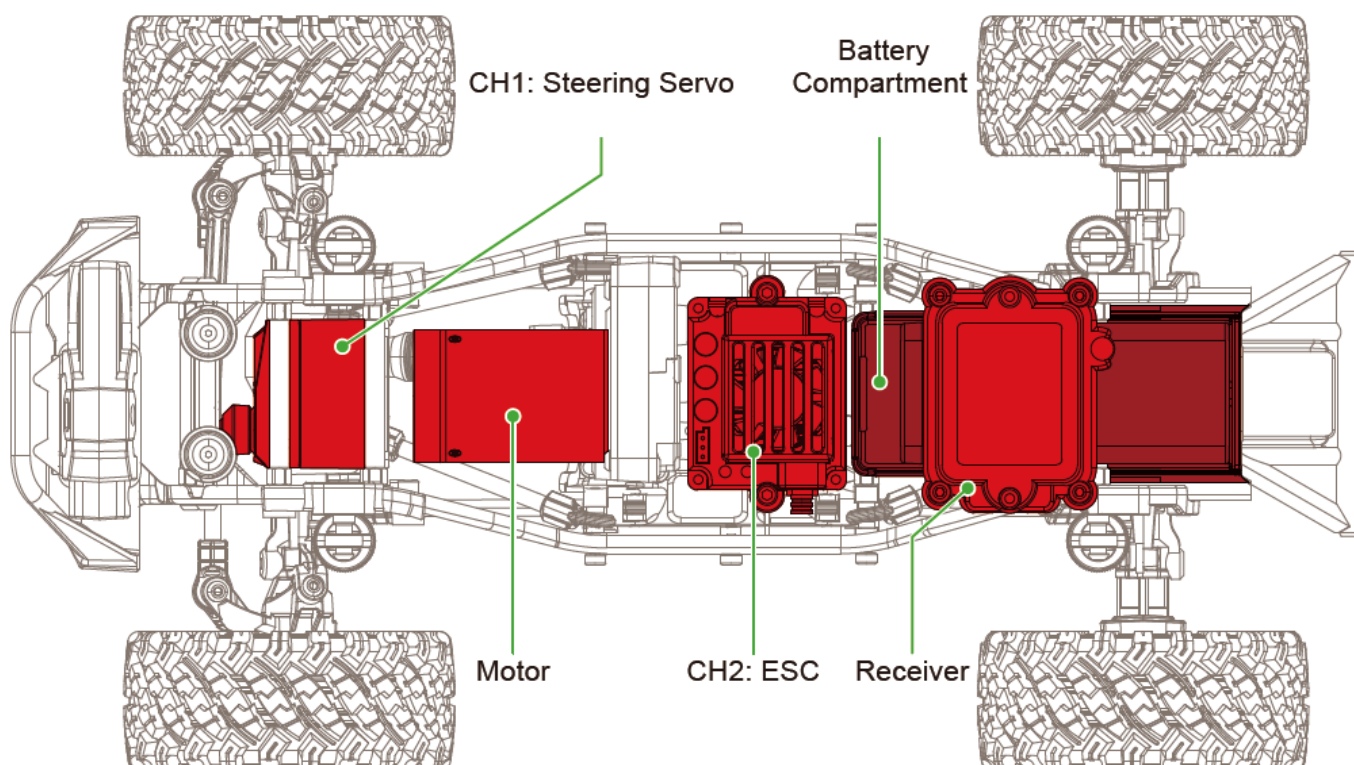
The device can be used in 0mm exposure condition, compliance with exposure requirements.

Only in the stated conditions, the device is shown to fully comply with the FCC RF Exposure requirements of KDB 447498.

### **Electronic device connection method**

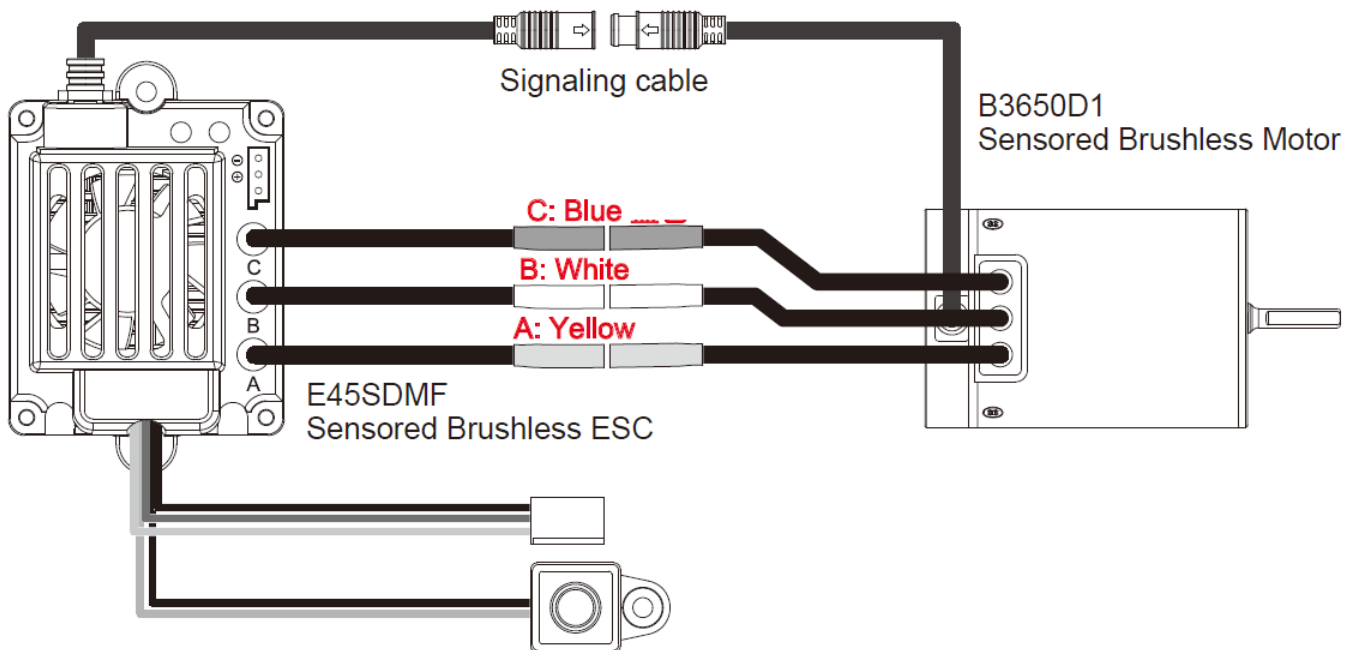


## Placement



## H12Y+ Sensored brushless ESC & motor

Please select the corresponding connection method according to the configuration.



### Warning:

Please note that the motor and ESC connecting wire interface need to be consistent. If connected wrongly will result in not working properly.

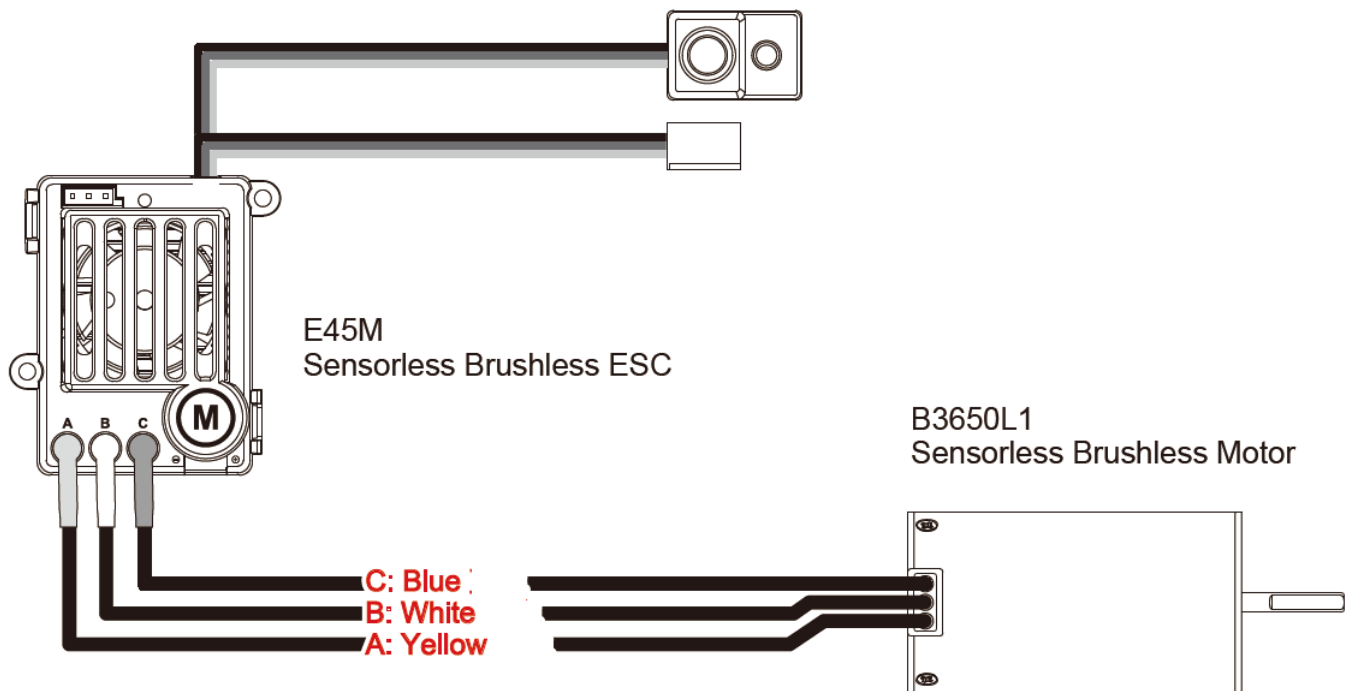
## International User



ESC can be connected by Smartphone to read parameters and set up. Please scan the QR code to download APP.

ESC can be connected with APP under power-on condition. Please make sure the Bluetooth of your cell phone is turned on before connecting.

## H12Y Sensorless brushless ESC & motor



**Warning:** Please note that the motor and ESC connecting wire interface need to be consistent. If connected wrongly will result in not working properly.

### Set the throttle range (Transmitter calibration)

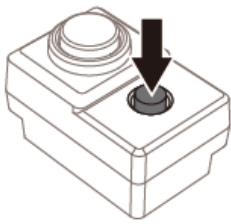
When replacing the transmitter with a new one, it is recommended to reset the throttle range, otherwise the ESC may become inoperable or abnormal.

#### ESC enters “the throttle range” state:

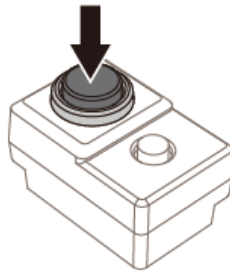
1. Turn on the transmitter, adjust the throttle trim to the middle position, and keep the status of “D/R”, “EPA”, “ATL” and other parameters of the throttle channel of the transmitter at 100%;
2. The ESC is connected to the battery, but in the off state, keep holding down the SET state, short press ON/OFF, the LED on the ESC will start to flash, and at the same time, the motor will start to chirp, at this time, you can release the SET button. The red light on the ESC is in the fast-flashing state, and it has entered “the throttle range” state.

Keep holding  
down the 【SET】

Short press ON/OFF  
ON/OFF

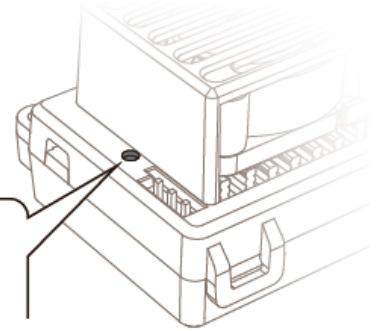


①



②

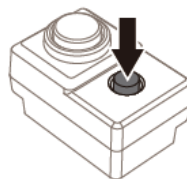
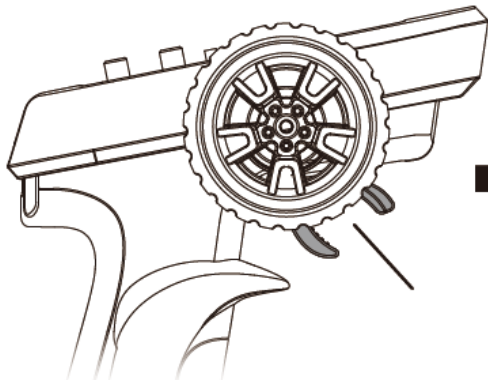
Release the button  
when the indicator  
light flashes



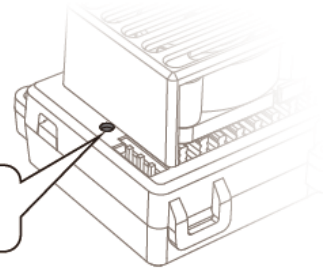
## H12Y Sensorless brushless ESC

### Calibration steps (please follow the order)

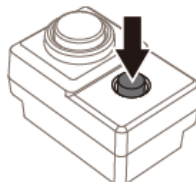
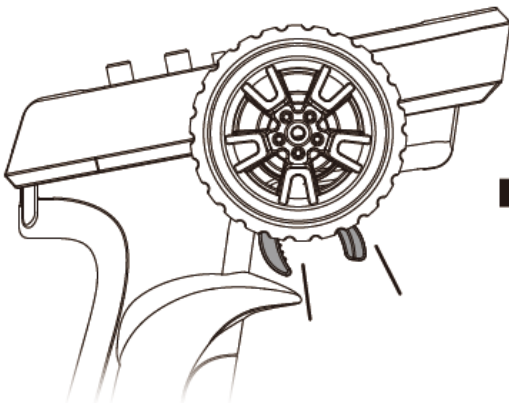
1. Keep the transmitter throttle in the mid-point position, press SET once, the red light of ESC goes out and the motor “Di” , indicating that the mid-point position has been successfully stored;



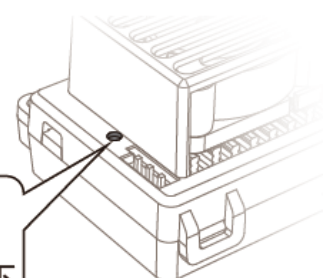
Red light out  
红灯熄灭



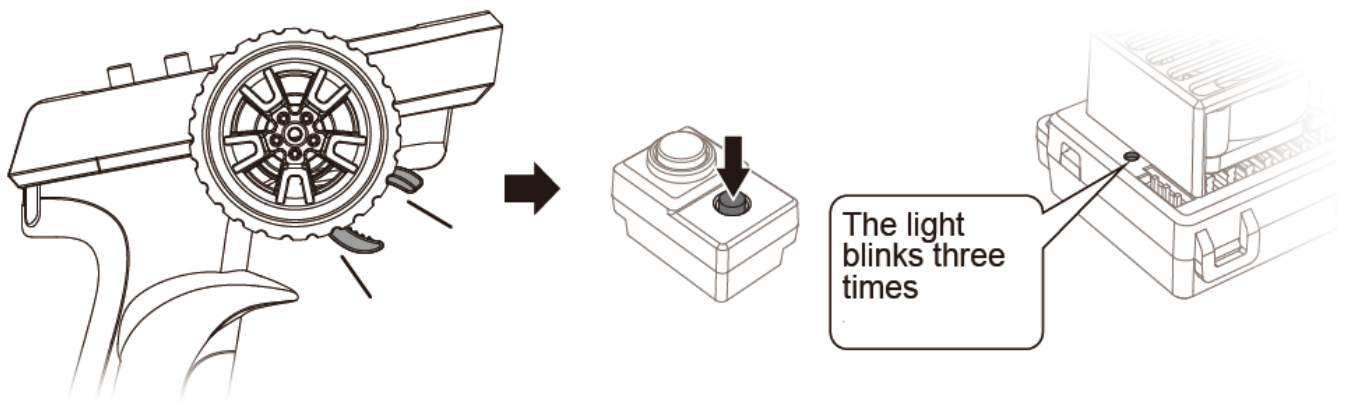
2. Keep the throttle of the transmitter in the maximum forward position, press SET once, the red light of ESC flashes twice and then goes out, the motor “Di.Di”, indicating that the maximum forward position has been successfully stored;



The light  
blinks twice  
指示灯闪两下



3. Keep the transmitter throttle in the maximum backward position, press SET once, ESC red light blinks 3 times and then goes out, motor “Di.Di.Di”, indicating that the maximum backward position has been successfully stored.



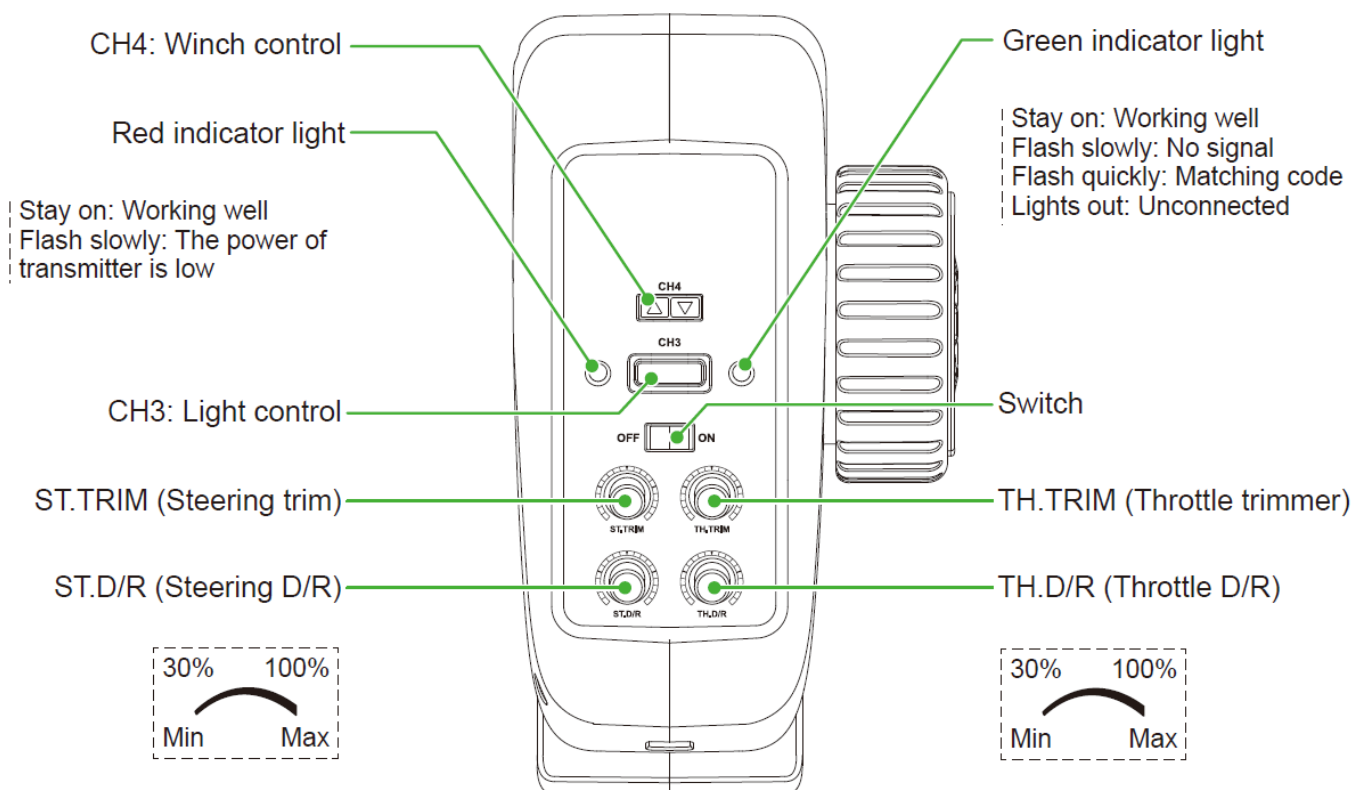
After completing the above three steps, it means the calibration has been completed. When the transmitter throttle returns to the centre position, the ESC can work normally.

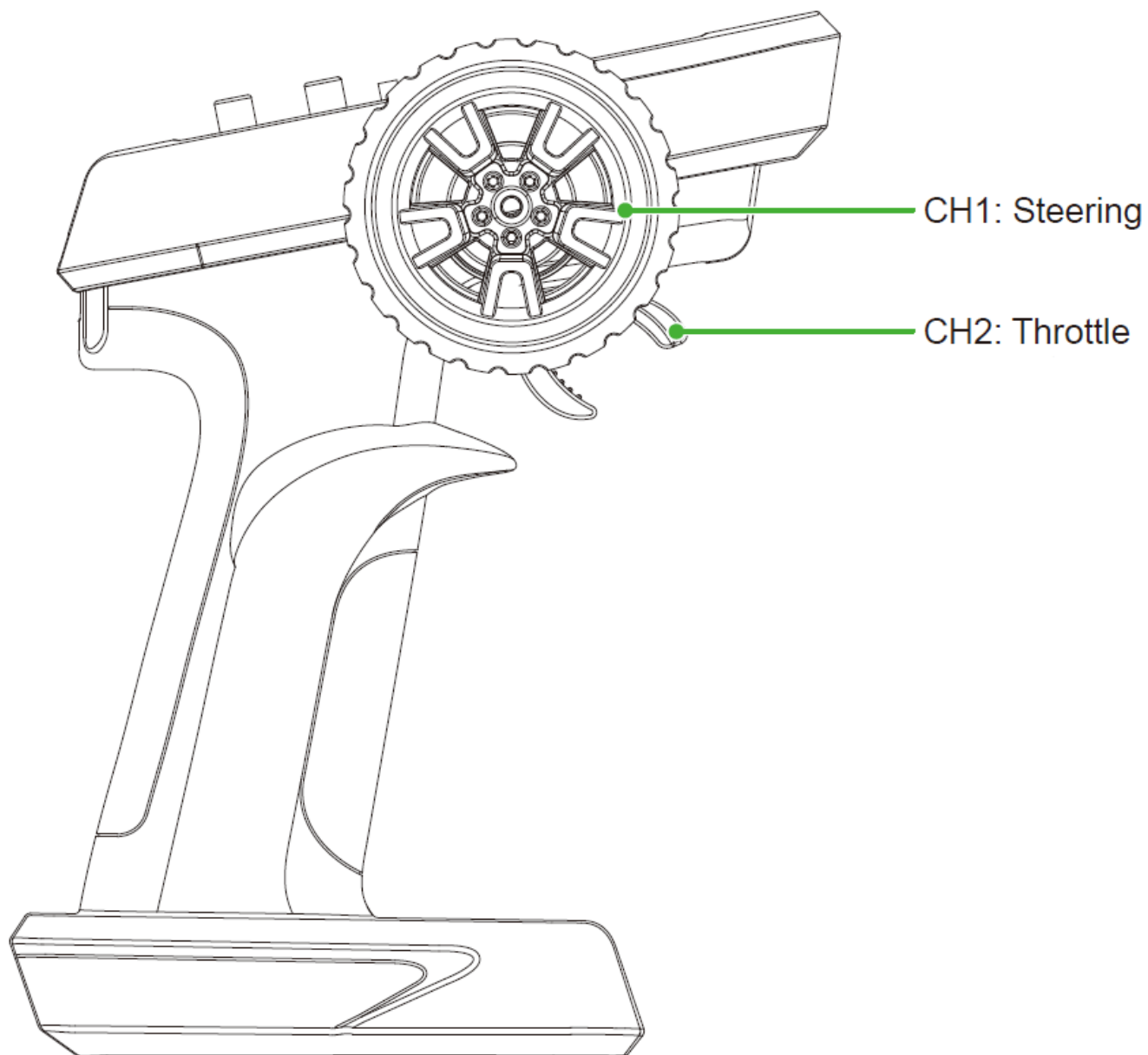
It is recommended to perform a throttle travel calibration when starting a new vehicle to get the most accurate experience.

### Throttle range back to initial setting

When the ESC is powered on, press and hold SET for 5 seconds, the motor will emit “Di.Di”, the ESC indicator light will flash twice, and the throttle range will be restored to the initial setting.

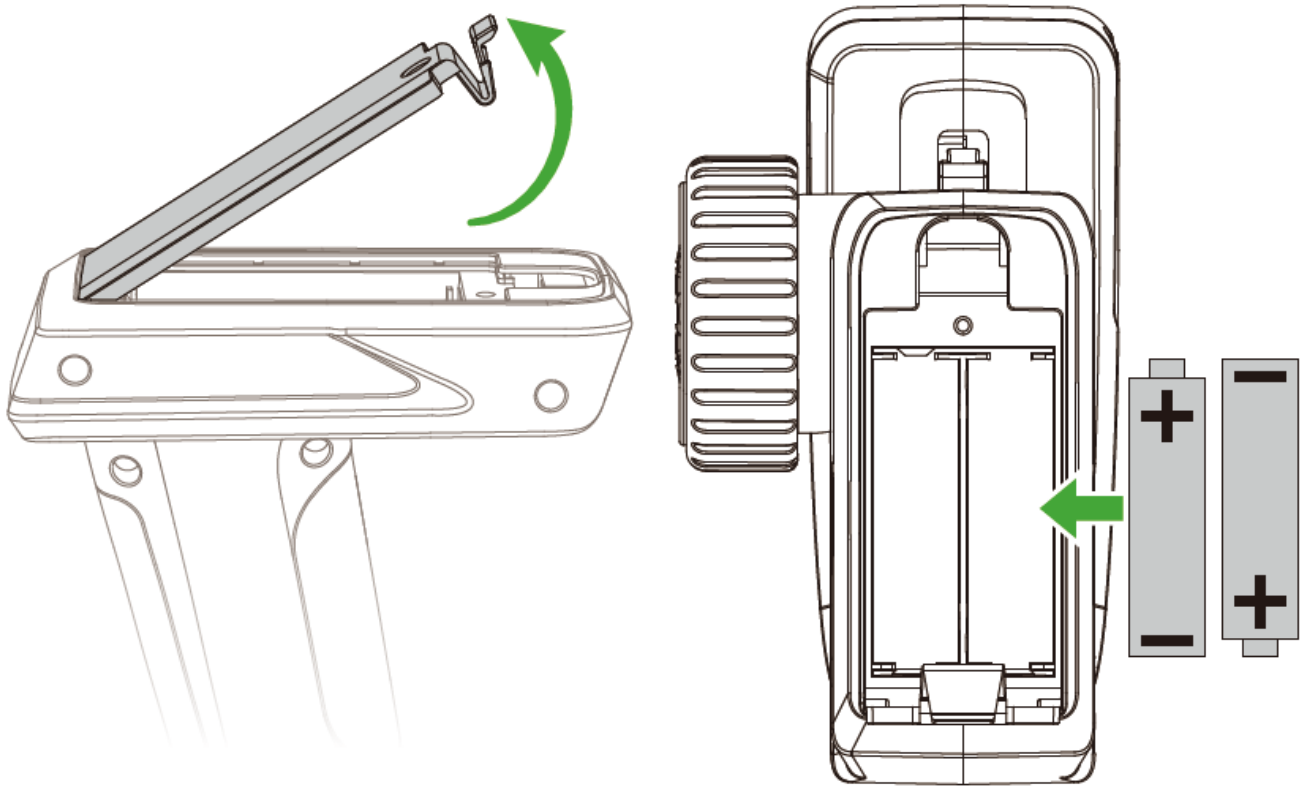
### Transmitter





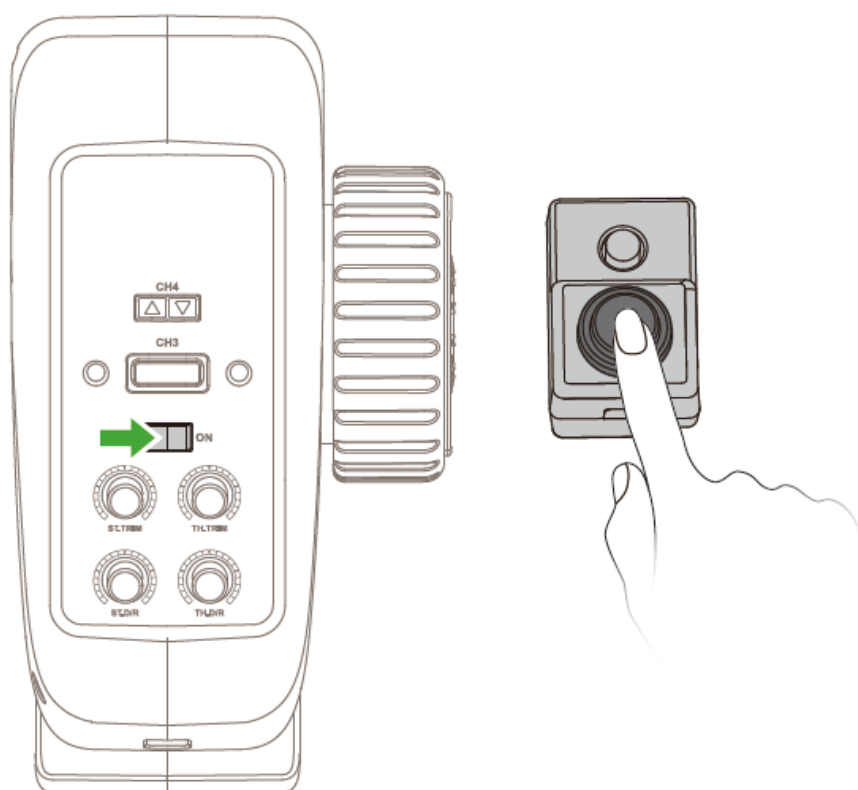
### **Install the transmitter's battery**

Open the transmitter's battery cover, insert 2 AA batteries according to the indicated positive and negative direction, close the battery cover.



## Power switch

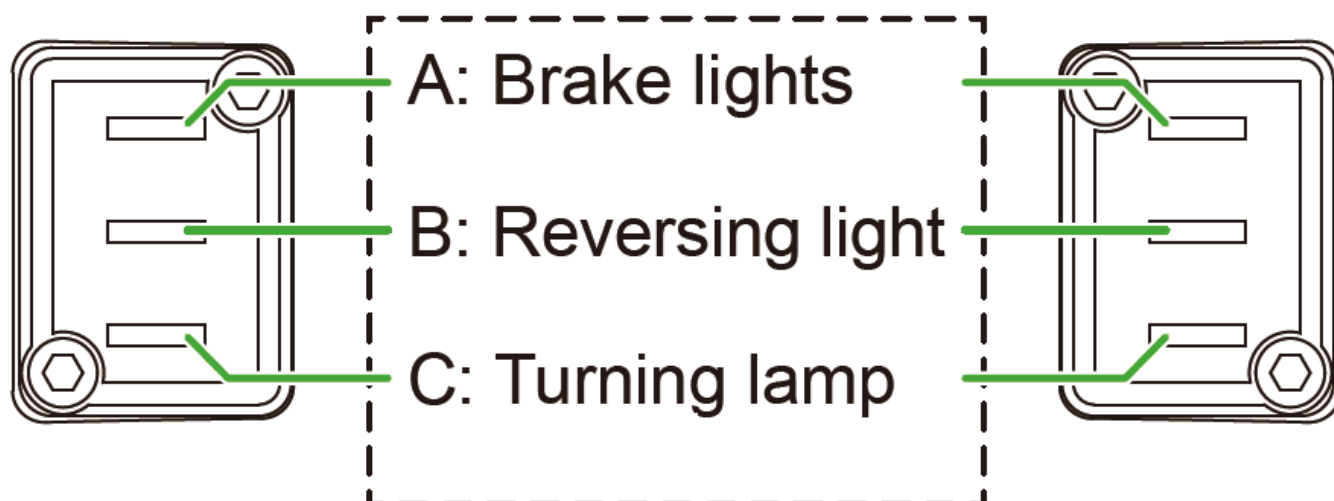
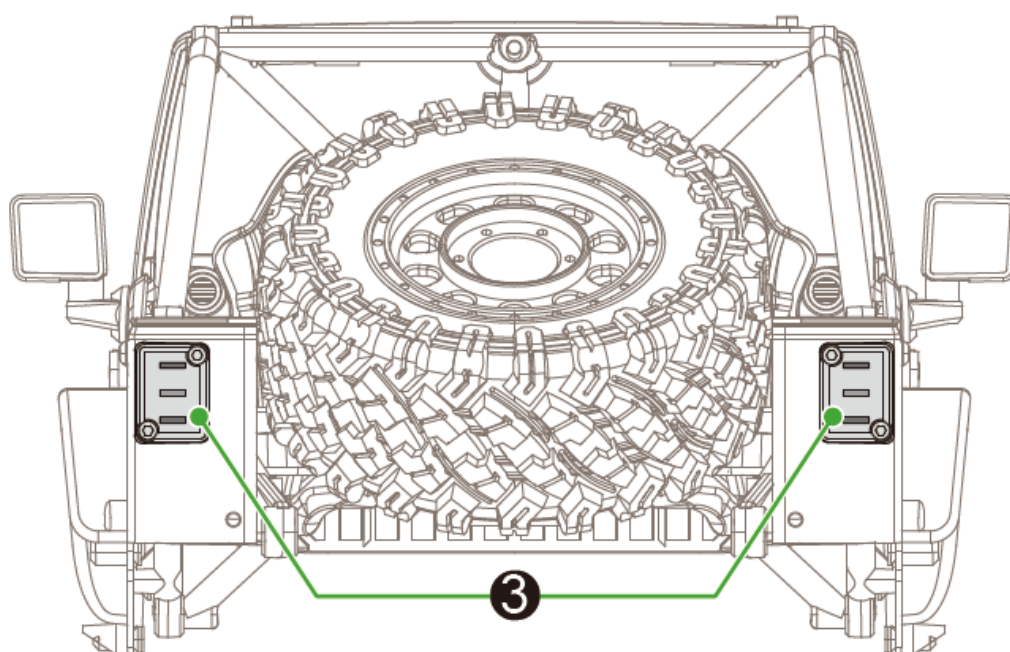
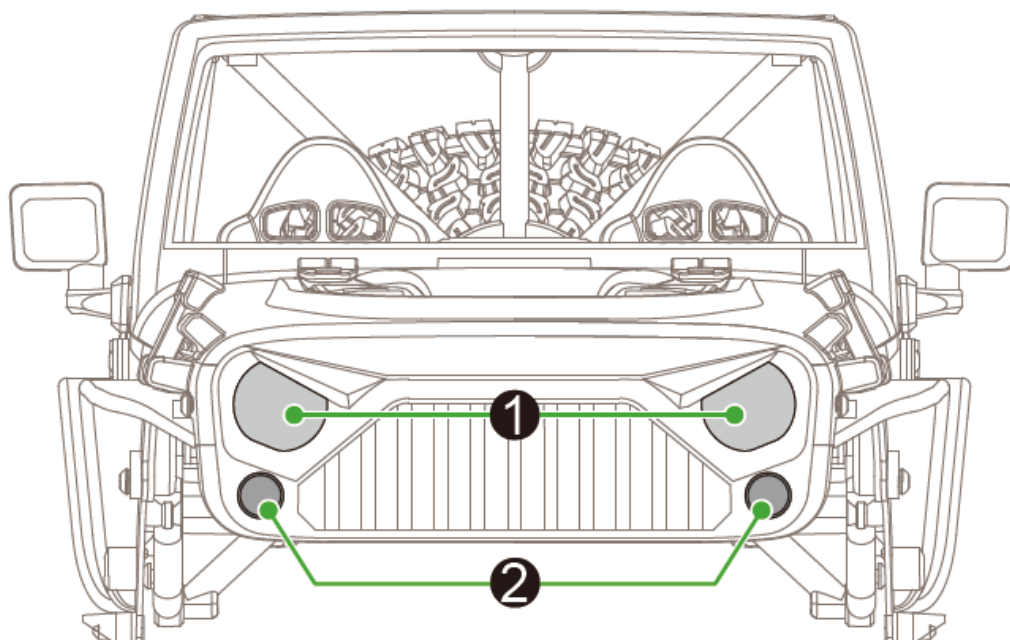
1. Turn on the power switch of the transmitter, the signal indicator light of transmitter flashes.
2. Press the power button of high speed car, the indicator light of high speed car flashes.
3. When the indicator light stays on, the high speed car can be operated to play.



- When turn on the transmitter, please DO NOT touch the throttle and steering. After turn on the transmitter's power, please operate after the indicator light of transmitter staying on.
- Please comply the principle of "turn on the transmitter firstly, then turn on the high speed car".
- In the frequency matching, please make sure there is only one pair of transmitter and high speed car in matching at the same time, otherwise the frequency will match wrongly.

## **Lighting instructions**

1. Headlights
2. Turning signal lamp
3. Brake lights/Turning signal lamp/Reversing indicator light



Short press [CH3] on the transmitter to switch the light modes:

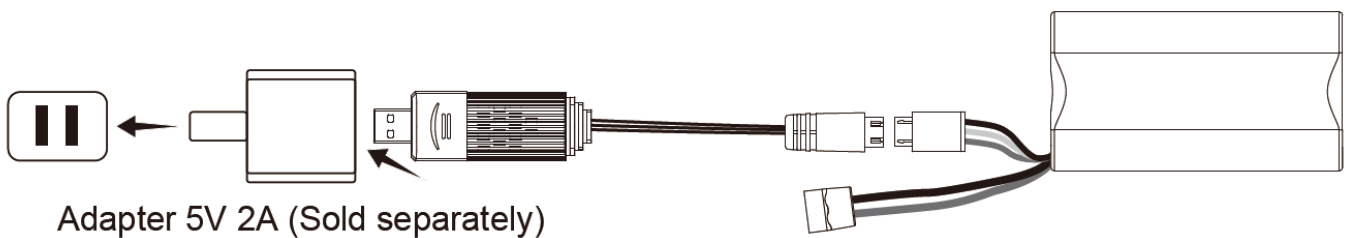
1. [Linkage Mode] The turn signal, brake light and reverse light will follow the function linkage.
2. [Emergency flash mode] All lights in double flash state.
3. [Lights off Mode] All lights are off.

## Charge

If charging with a 5V 2A USB adapter.

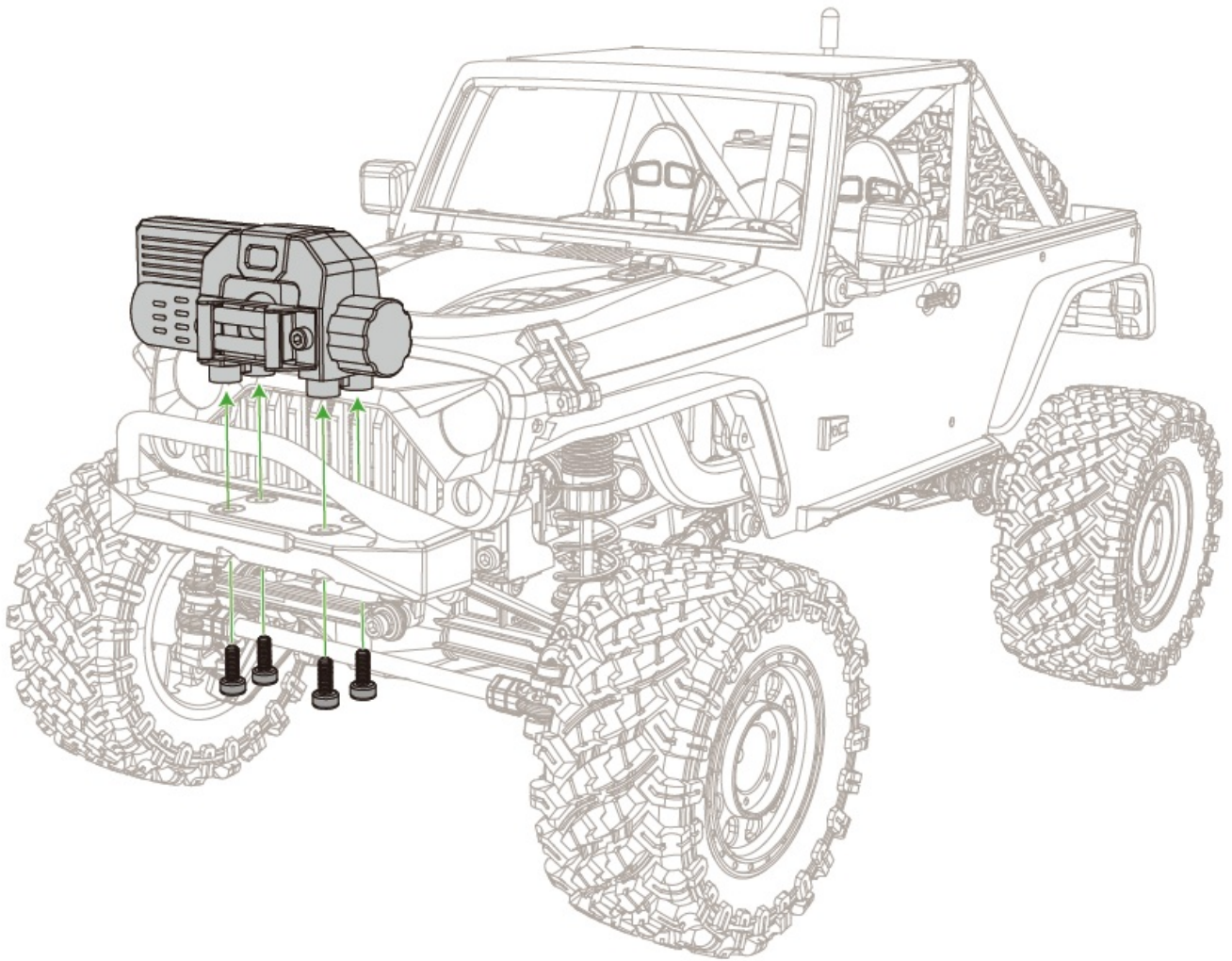
- When charging, the indicator light of charger is green and flashes;
- When the battery is fully charged, the green indicator light of the charger stays on.

\*The above charging time data is based on the test result of 5V 2A adapter. Using different specifications of adapters or power supply equipment will affect the actual charging time. It is recommended to use a 5V 2A adapter for charging.



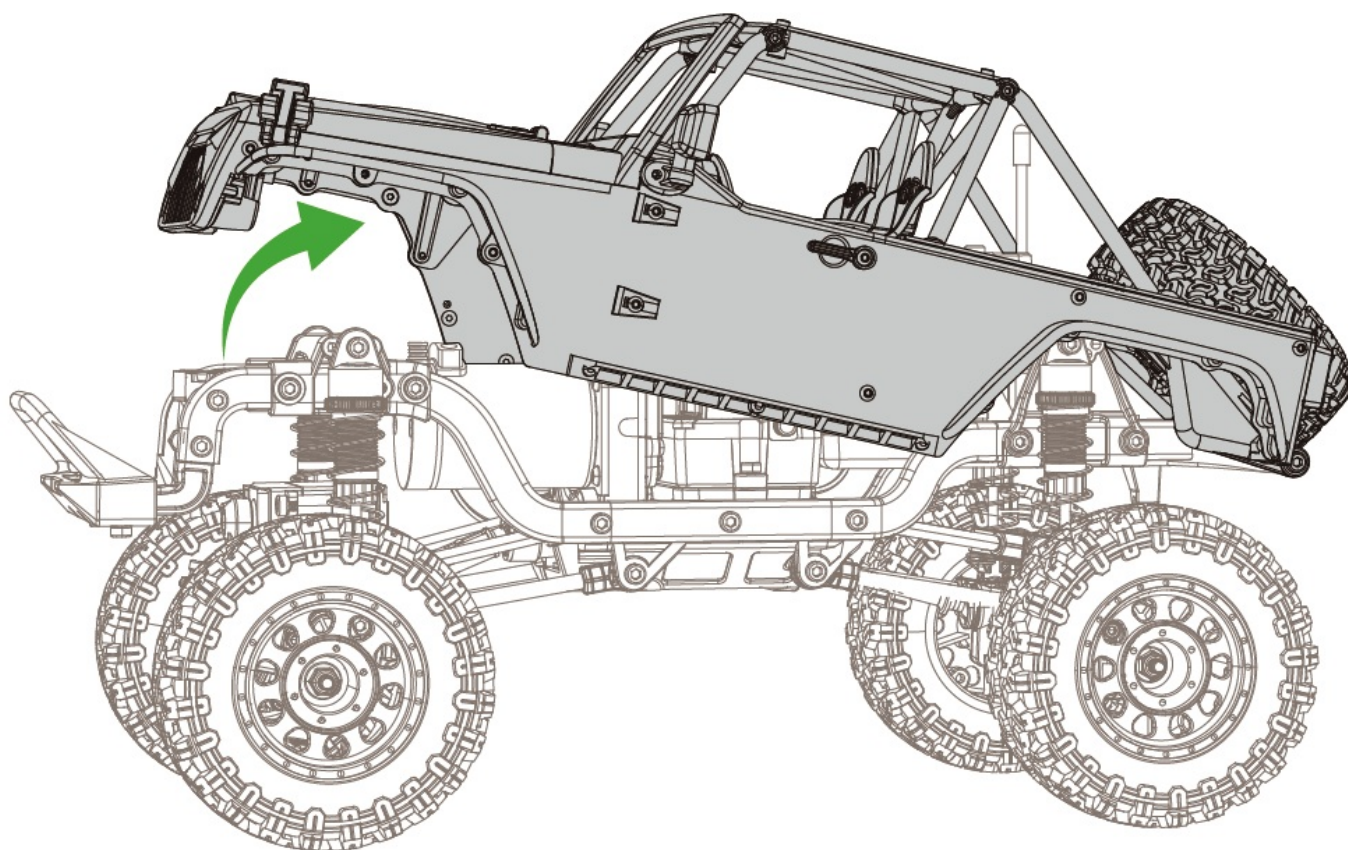
## Mounting winch (Optional)

Install the winch onto the front bumper and secure the winch with the 4 screws.



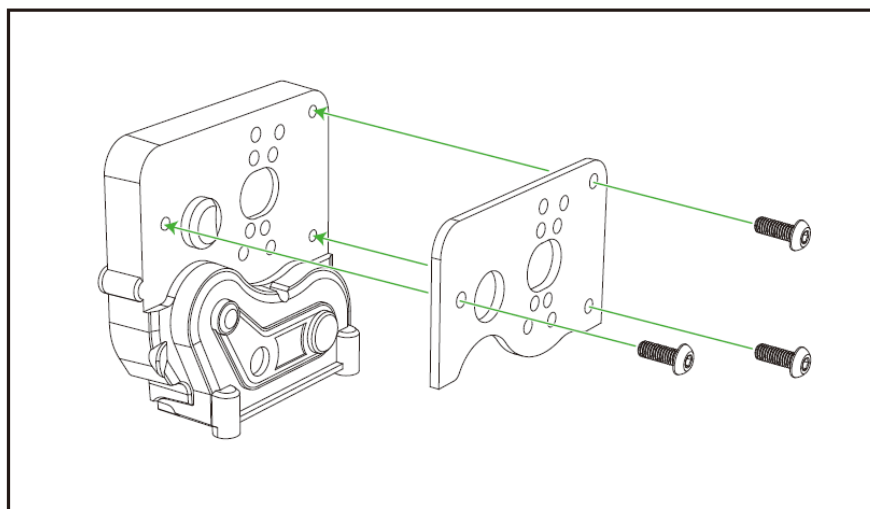
## Open the body

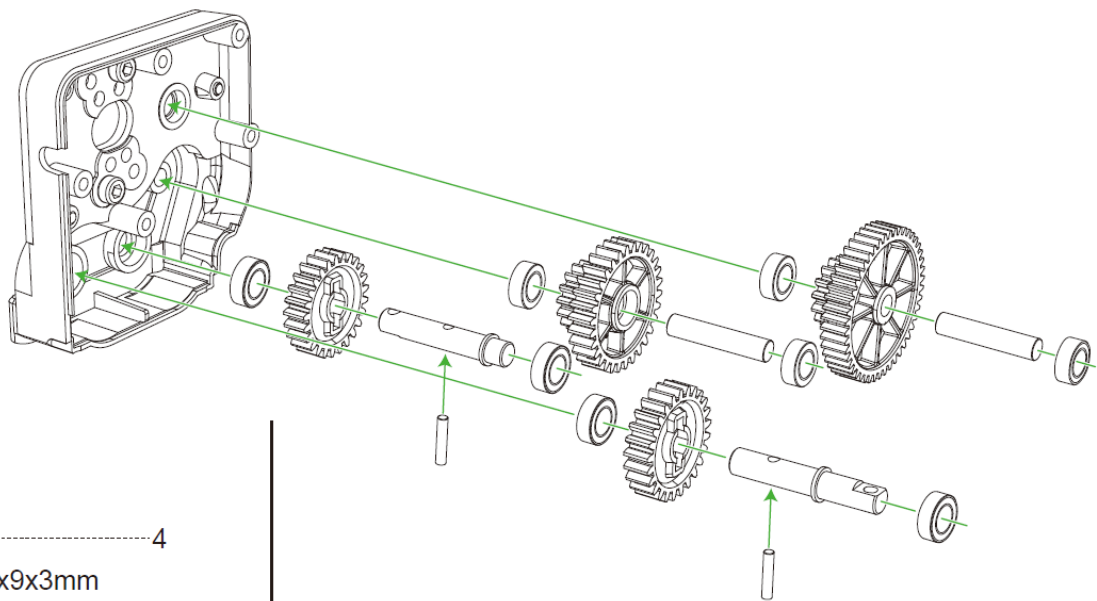
Lift the breakaway magnet upward and flip it back to open the body.



## Gearbox subassembly

 ..... 3  
M3080      Ø3x8mm





4

BRG593 Ø5x9x3mm



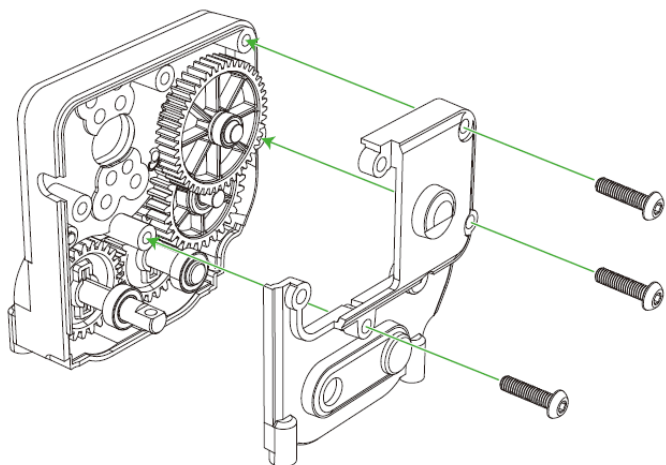
4

BRG7425 Ø7x4x2.5mm



2

M2097 Ø2x9.7mm



3

HTM3012 Ø3x12mm

HTM3012 Ø3x12mm 2

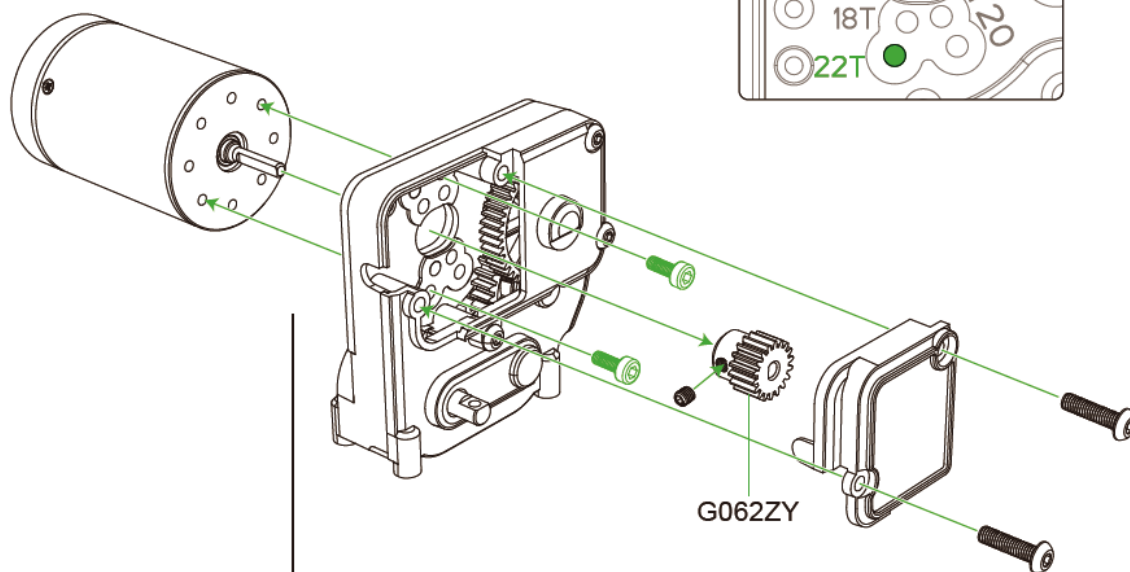
M3030 Ø3x3mm 1

M3030 Ø3x3mm 1

HMM3080 Ø3x8mm 2

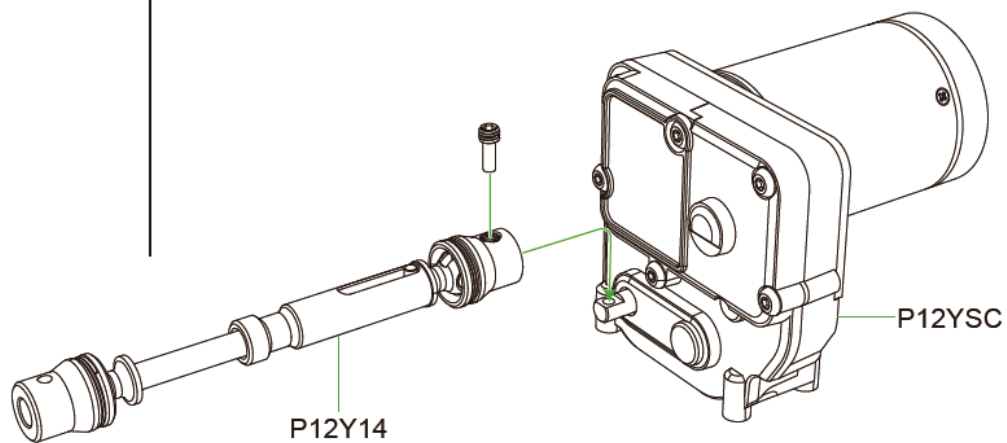
HMM3080 Ø3x8mm 2

HMM3080 Ø3x8mm 2



S4092 Ø4x9.2mm 1

S4092 Ø4x9.2mm 1



## Front axle subassembly

HKM2560 Ø2.5x6mm 3

R1810 Ø7.9x12.7x4mm 2

M2097 Ø2x9.7mm 1

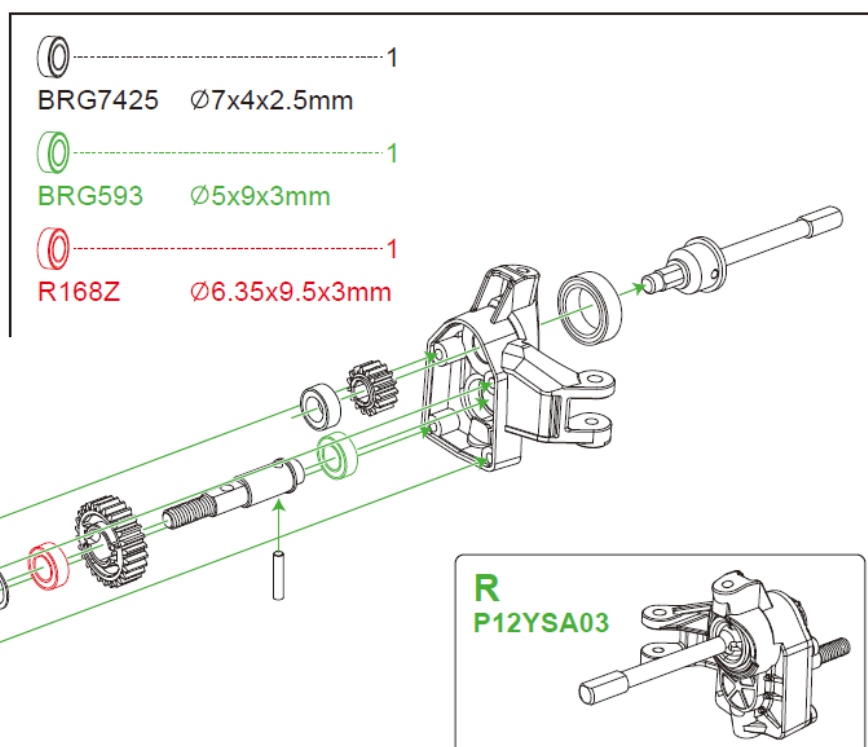
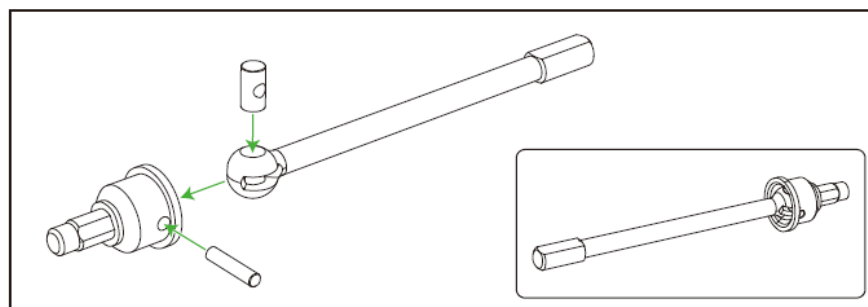
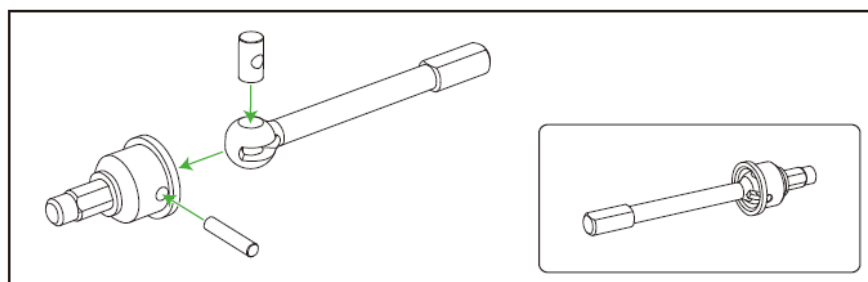
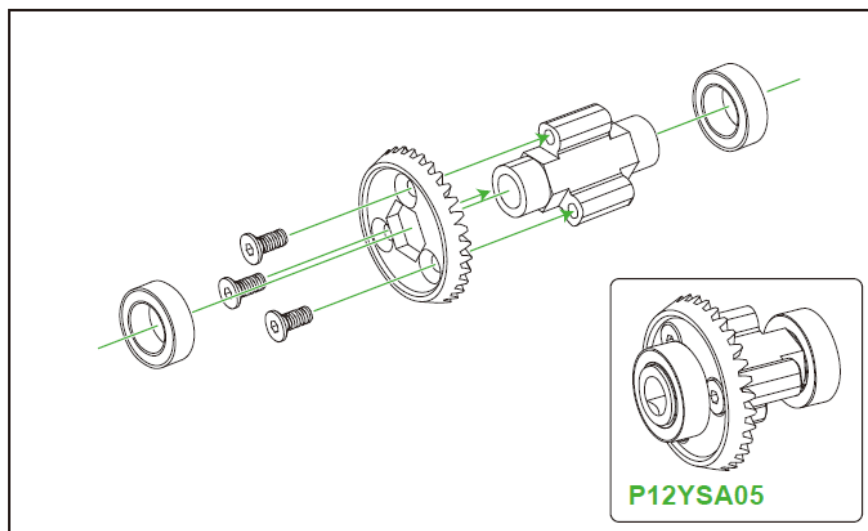
M2097 Ø2x9.7mm 1


HHM2580 Ø2.5x8mm 4

G85653 Ø8.5x6.45x0.3mm 1

M20101 Ø2x10.1mm 1

BRG10154 Ø10x15x4mm 1



<div><div>No. H12Y</div><div><b>HYPER GO</b> 1:12 RC CLIMBING CAR USER MANUAL</div><div><div>4WD</div></div></div>	<div><a href="#">HYPER GO GO H12Y 1:12 RC Climbing Car [pdf]</a> User Manual</div> <div>GO H12Y, GO H12Y 1 12 RC Climbing Car, 1 12 RC Climbing Car, RC Climbing Car, Climbing Car, Car</div>
---	---

## References

- [User Manual](#)

■ HYPER

GO

◆ 1 12 RC Climbing Car, car, Climbing Car, GO H12Y, GO H12Y 1 12 RC Climbing Car, HYPER GO, RC Climbing Car

---

## Leave a comment

Your email address will not be published. Required fields are marked \*

Comment \*

Name

Email

Website

☐ Save my name, email, and website in this browser for the next time I comment.

**Post Comment**

## Search:

e.g. whirlpool wrf535swhz

**Search**

[Manuals+](#) | [Upload](#) | [Deep Search](#) | [Privacy Policy](#) | [@manuals.plus](#) | [YouTube](#)

This website is an independent publication and is neither affiliated with nor endorsed by any of the trademark owners. The "Bluetooth®" word mark and logos are registered trademarks owned by Bluetooth SIG, Inc. The "Wi-Fi®" word mark and logos are registered trademarks owned by the Wi-Fi Alliance. Any use of these marks on this website does not imply any affiliation with or endorsement.