



hygiena BAX Q7 Pathogen Detection Installation Guide

[Home](#) » [Hygiena](#) » hygiena BAX Q7 Pathogen Detection Installation Guide 

hygiena BAX Q7 Pathogen Detection Installation Guide



Contents

1 Introduction

1.1 Software Updates and Features for Release v4.21.3.9366 for WIN10 ONLY

2 Software Upgrade Instructions

3 Documents / Resources

3.1 References

4 Related Posts

Introduction

BAX System Q7 software release v4.21 contains several user interface features, new target options, and error logging improvements.

We strongly recommended that you always install the most recent version as soon as possible for optimal performance.

Please read all instructions thoroughly and ensure all required prerequisites are confirmed prior to beginning installation of the software update.

If you currently have a WIN7 computer system, please contact diagnostics.support@hygiena.com or your local Hygiena® representative for upgrade support. This release is NOT applicable for WIN7 systems.

Software Updates and Features for Release v4.21.3.9366 for WIN10 ONLY

Install Package

- Single executable install with reduced size (2 GB)

Reorganization of software versioning:

- **Package:** 4.21.3.9366
- **BAX System:** 4.21.3.9316
- **Bridge:** 4.21.3.9359
- **SDS:** 1.3.1035.1
- **Analysis:** 4.21.3.8313

SDS Equipment Driver Improvements:

Auto-recovery of instrument communication disconnection with notifications

User Interface Enhancements:

- Option to export results as a .csv file
- About Dialog updates
- Removed ability to initialize a run without instrument connection
- Feature to preserve calibration file during installation

Application Insights:

- Improvements with more detailed logs for troubleshooting

- Certified Algorithms

Additional targets:

- STEC Screener eae ONLY
- STEC Screener stx ONLY
- Real-Time E. coli O157:H7 S-Target ONLY

Display messages and confidence levels for:

- Real-Time E. coli O157:H7 Exact
- Real-Time Salmonella

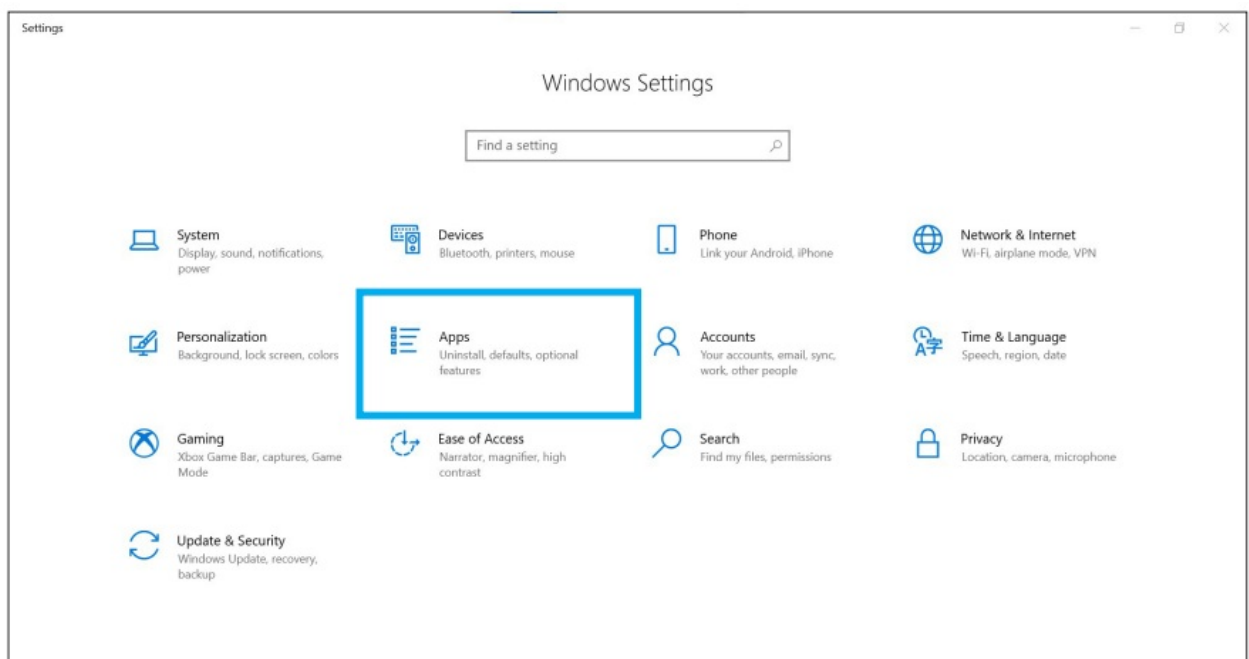
Software Upgrade Instructions

1. Required Prerequisites:

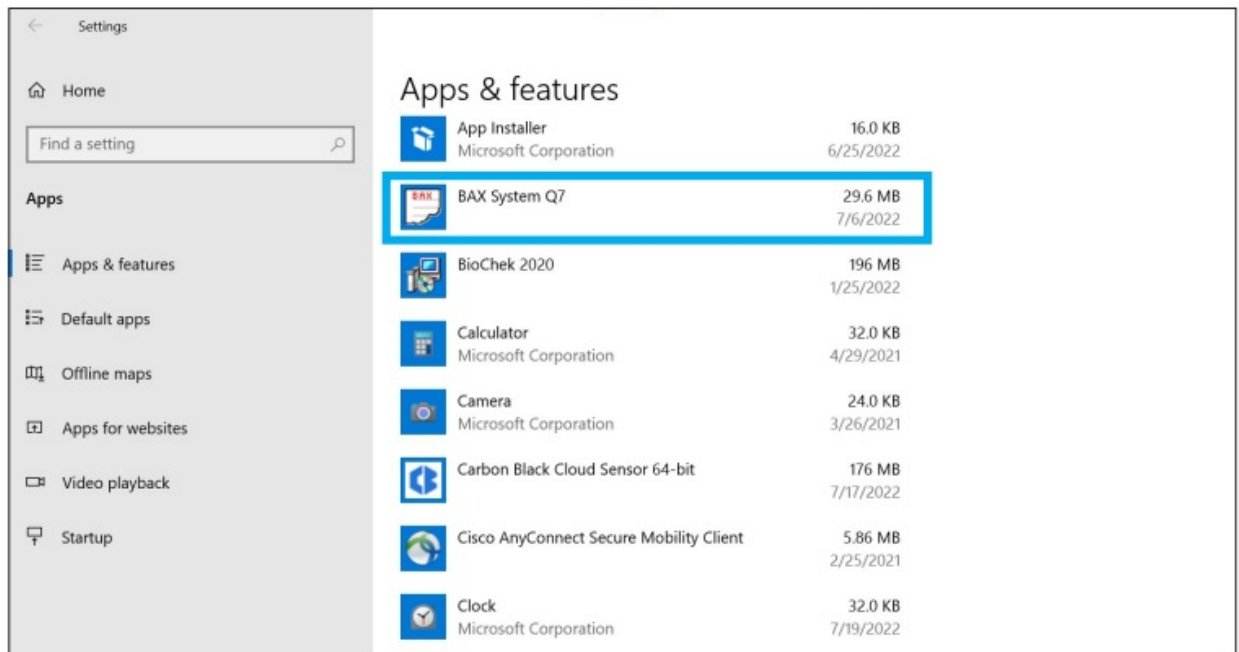
- Regional Settings are in English
- Read/Write Permissions for the below file locations for all users
- C:\Program Files\MATLAB
- C:\Program Files (x86)\BAX
- C:\ProgramData\BAX Q7 System
- All Power and Sleep Settings are set to Never

2. Calibration storage and removal of current software:

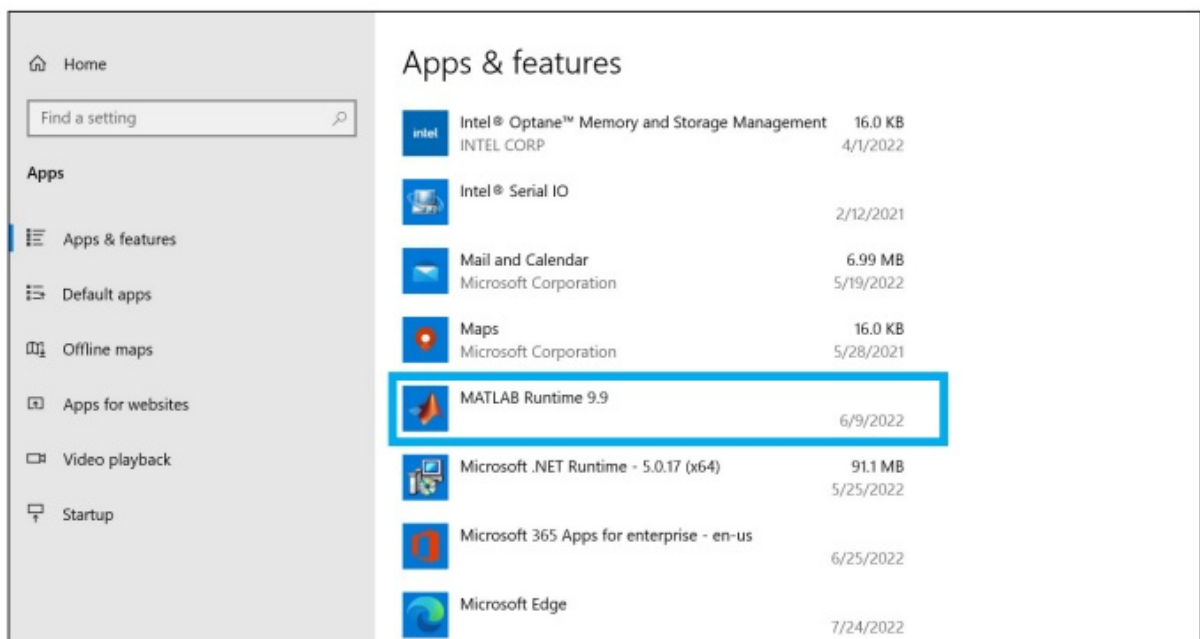
- Back up the system's calibration file
- Select Operations > BAX Maintenance > Export Calibration from the menu bar
- Navigate to a new folder in which to store the backup file and click Save
- Name the calibration file (example: Q7Cal_date.bqc)
- Uninstall the previous version of the BAX Q7 application and ANY VERSION of MATLAB (REQUIRED)
- Navigate to Windows Settings and select Apps.



- Click on BAX System Q7, select Uninstall, and agree (click Yes) on next window to initiate removal.



- Click on ANY version of the MATLAB application, select Uninstall, and click Agree on next window (this may take several minutes)



Restart Computer BEFORE continuing to step 3

Software Installation Instructions for step 3 and 4

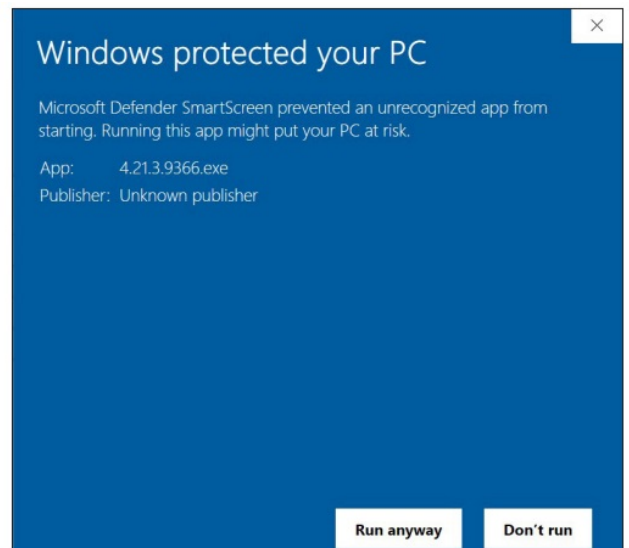
3. Download 4.21.3.9366 software by clicking this link or the button from the BAX Q7 Page

- Transfer download to a memory/USB stick if computer doesn't have internet access.

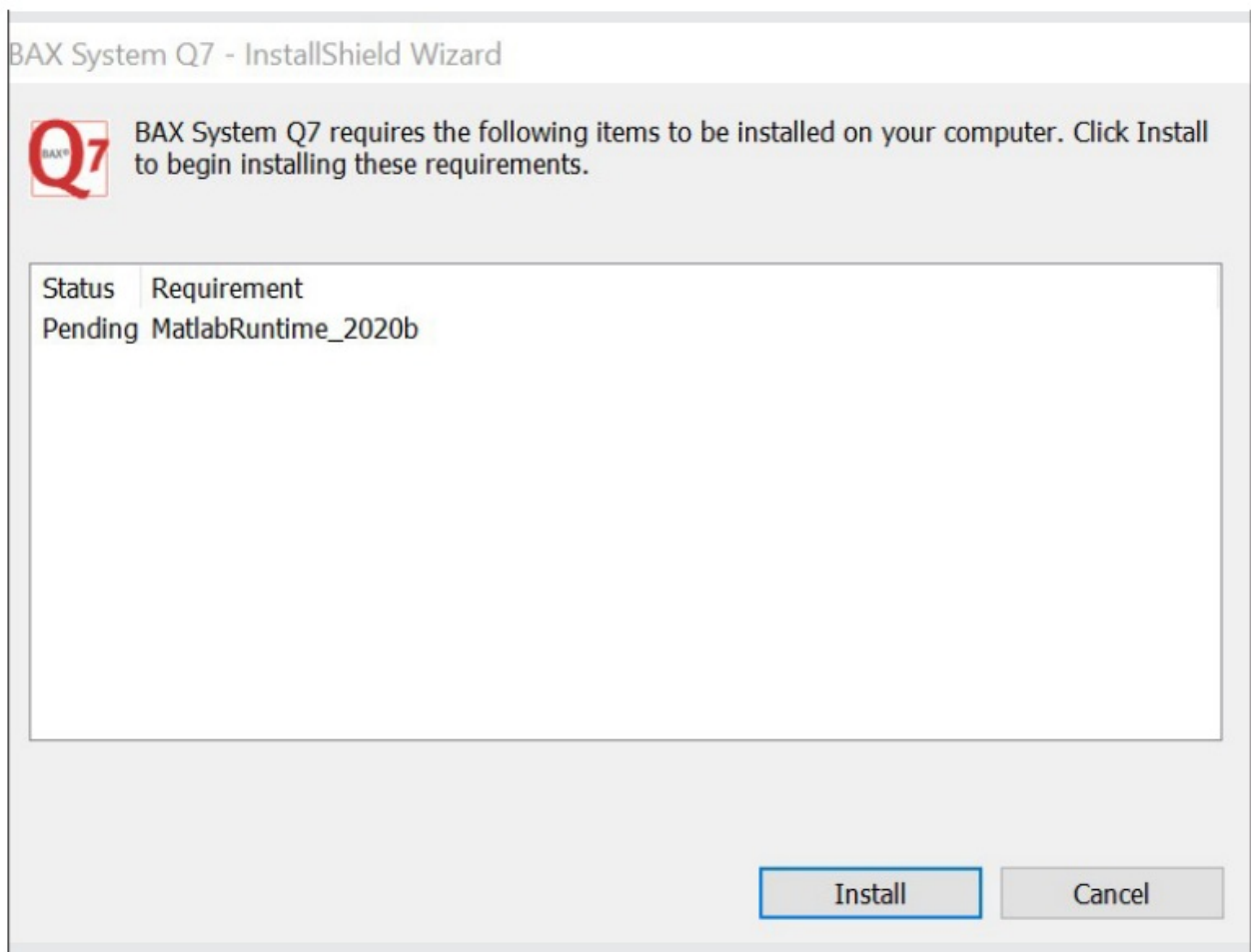
☐ Click on the Q74.21.3.9366 icon and the program will automatically start execution of install.



- A windows protect screen may pop-up. Select More Info, then select Run Anyway.
- On the next pop-up, select Yes to allow install to begin.



4. MATLAB updates will install first. Follow prompts below and select the default responses:



BAX System Q7 - InstallShield Wizard



BAX System Q7 requires the following items to be installed on your computer. Click Install to begin installing these requirements.

| Status | Requirement |
|------------|---------------------|
| Extracting | MatlabRuntime_2020b |

Extracting: Matlab Runtime Installer.exe



Install

Cancel

Install error: VCRUNTIME140.dll was not found. (shown below)

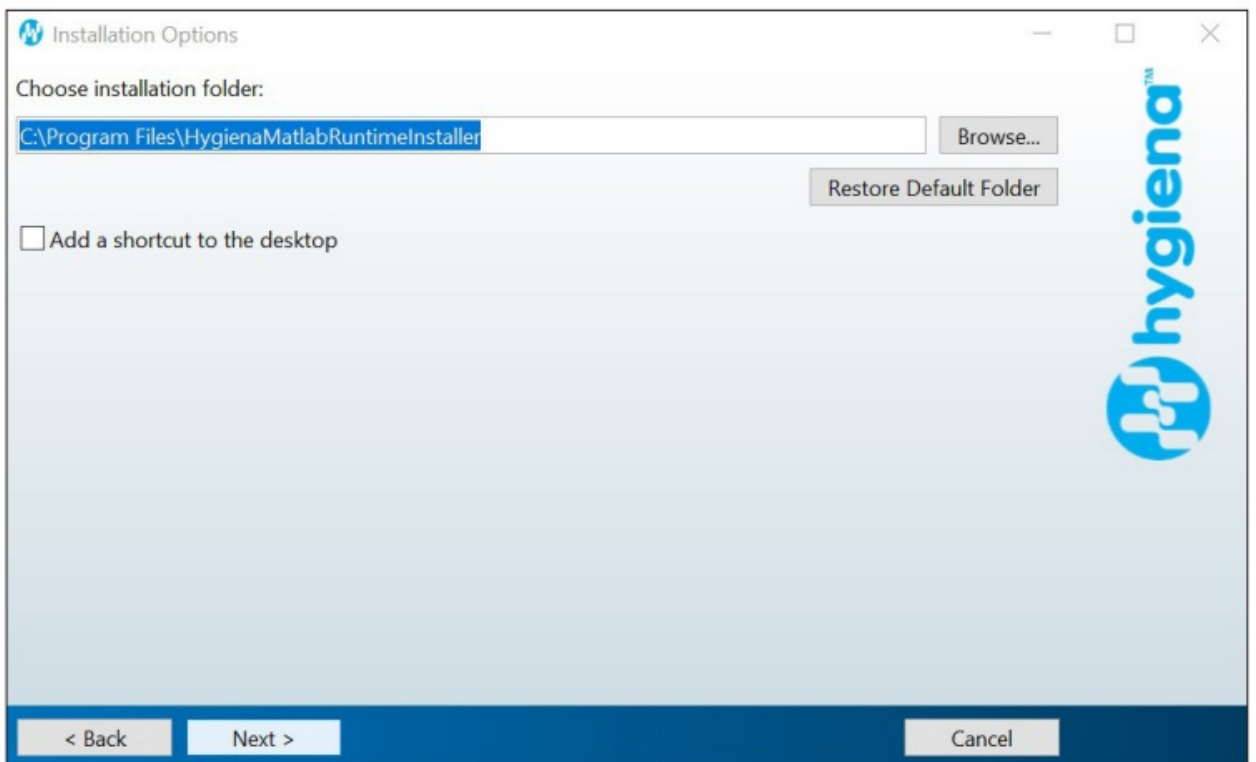
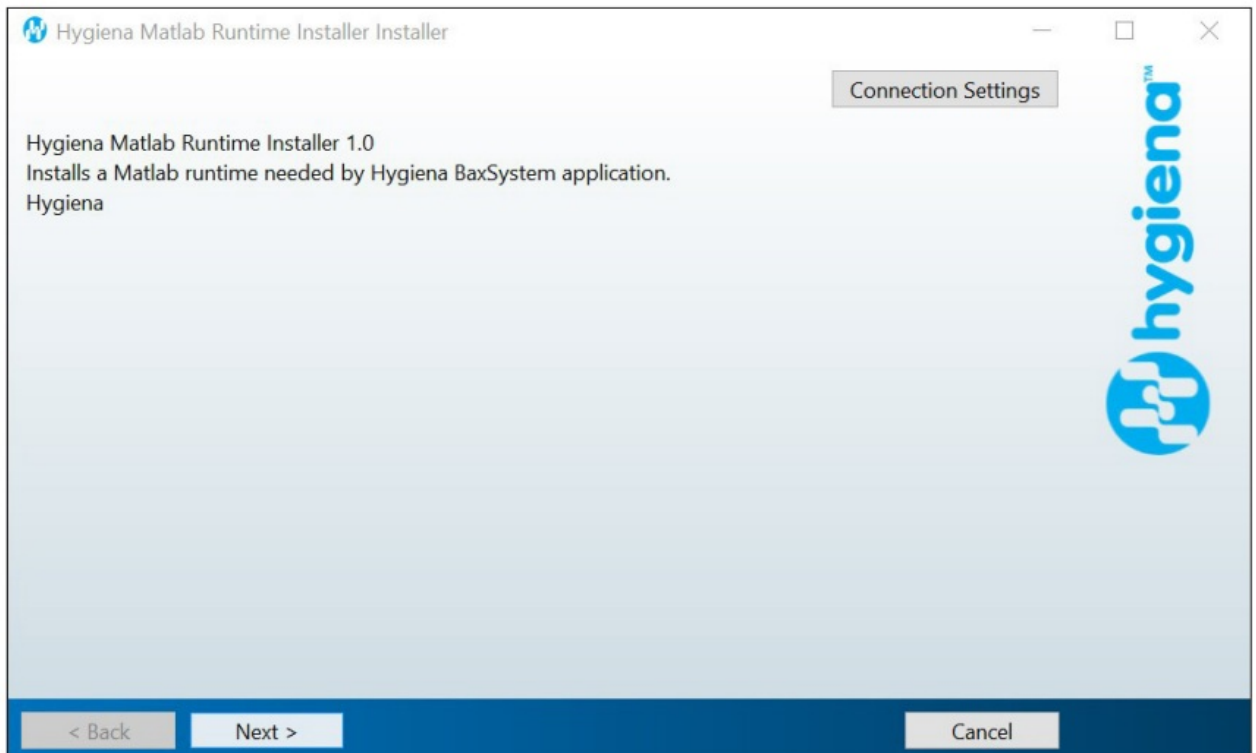
unzip.exe - System Error

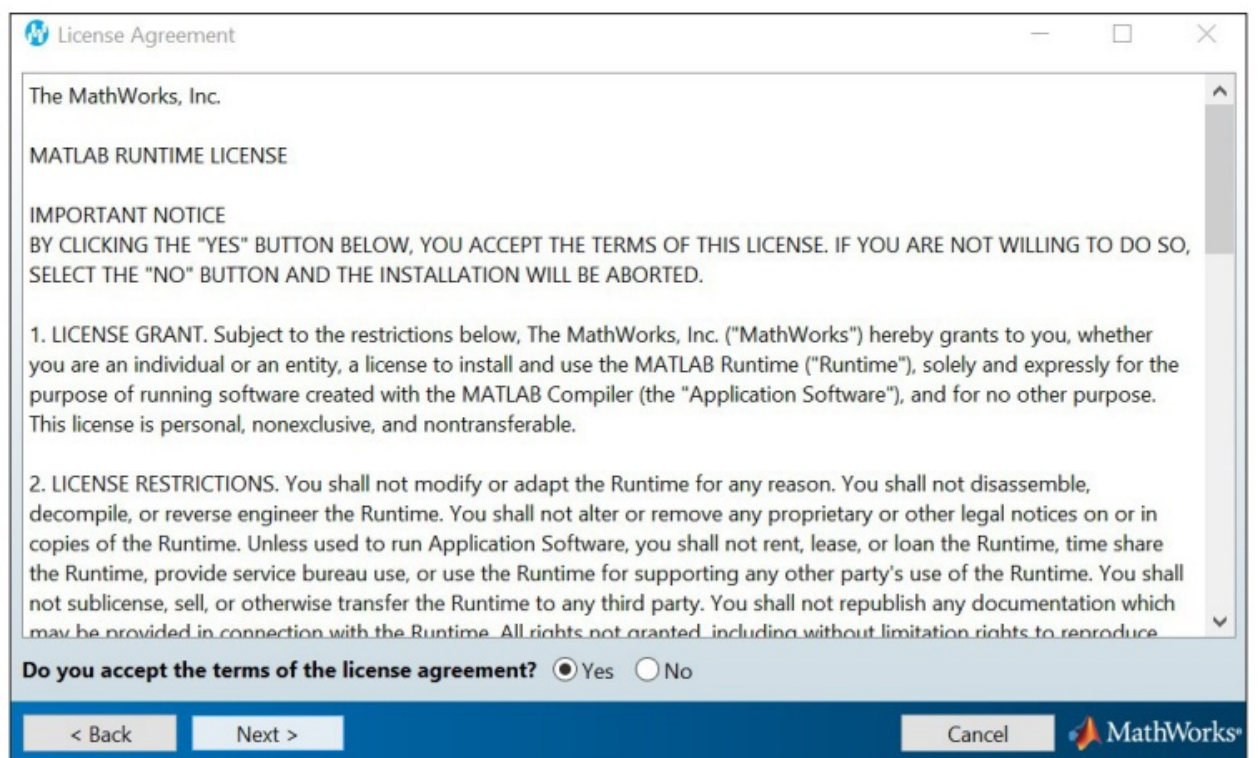
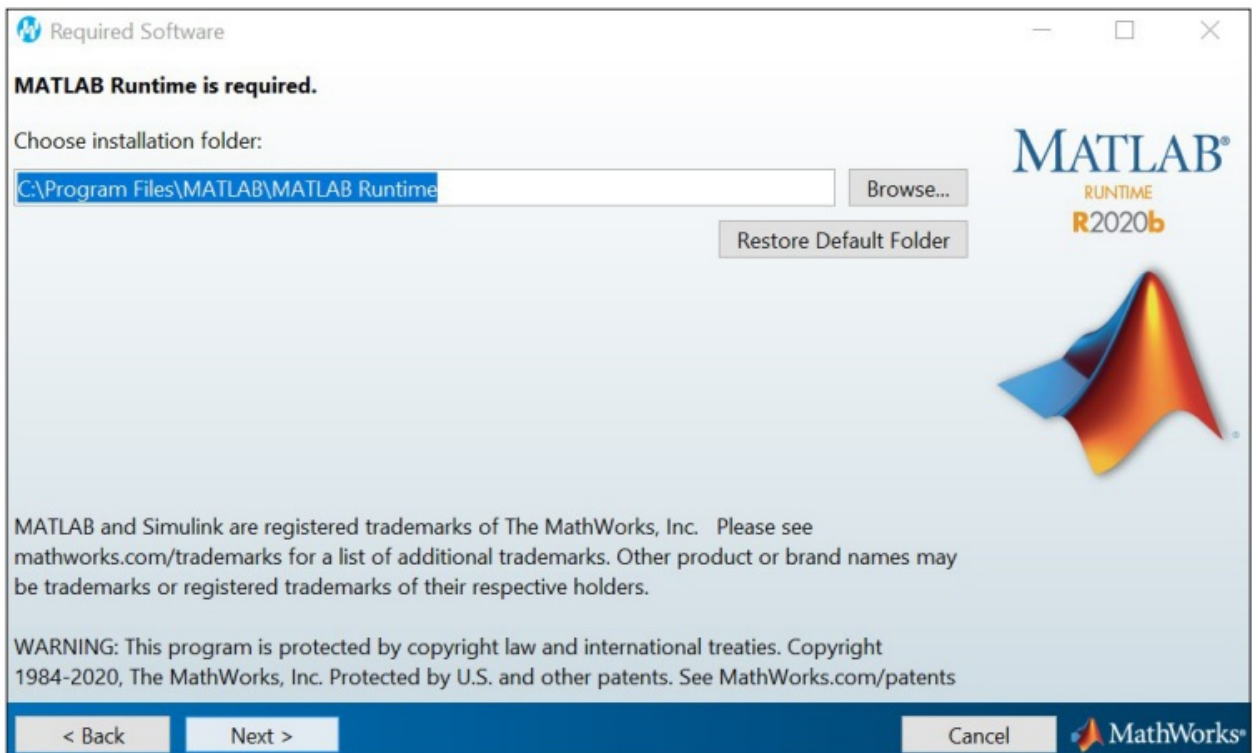


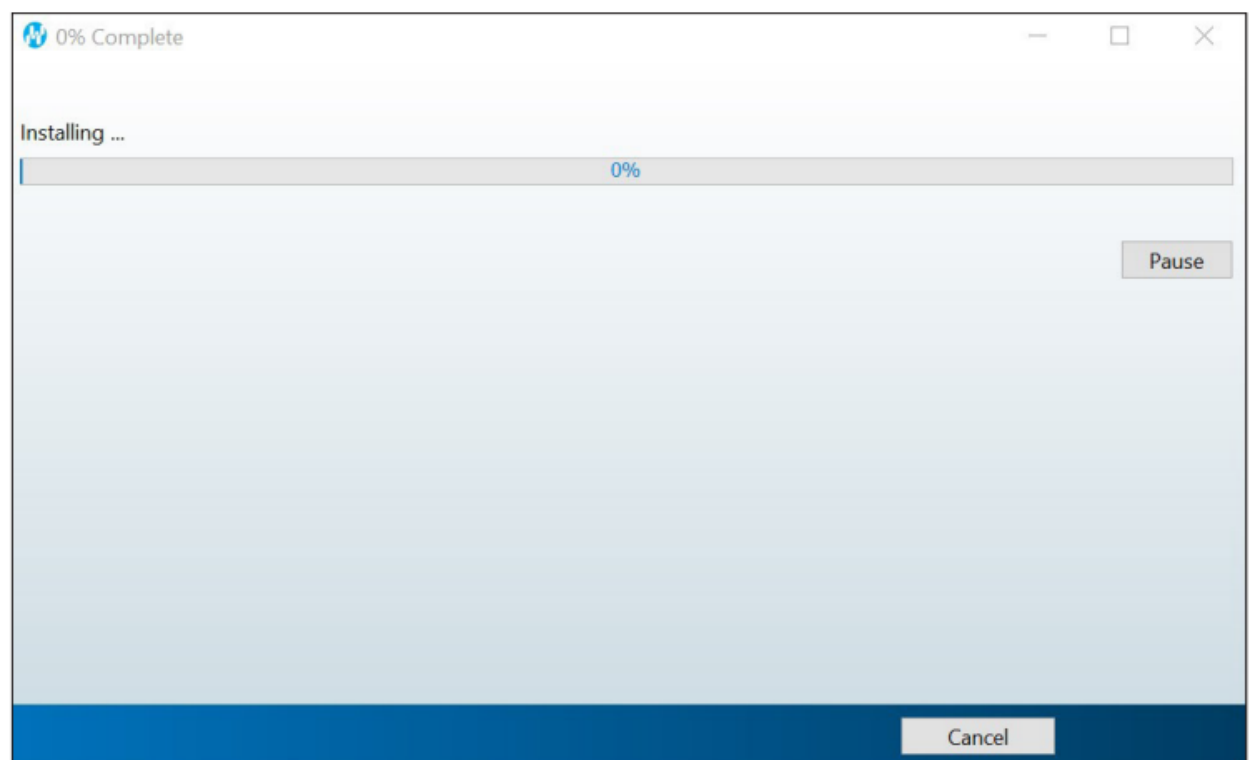
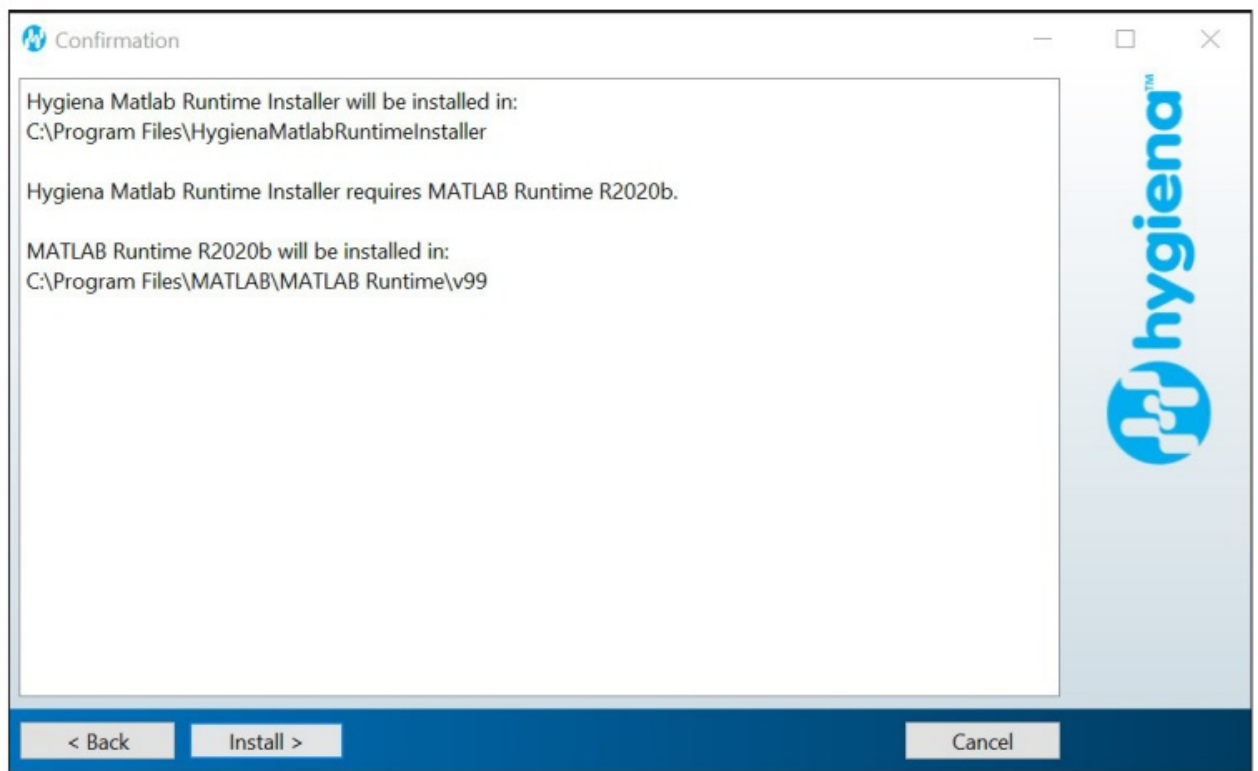
The code execution cannot proceed because VCRUNTIME140.dll was not found. Reinstalling the program may fix this problem.

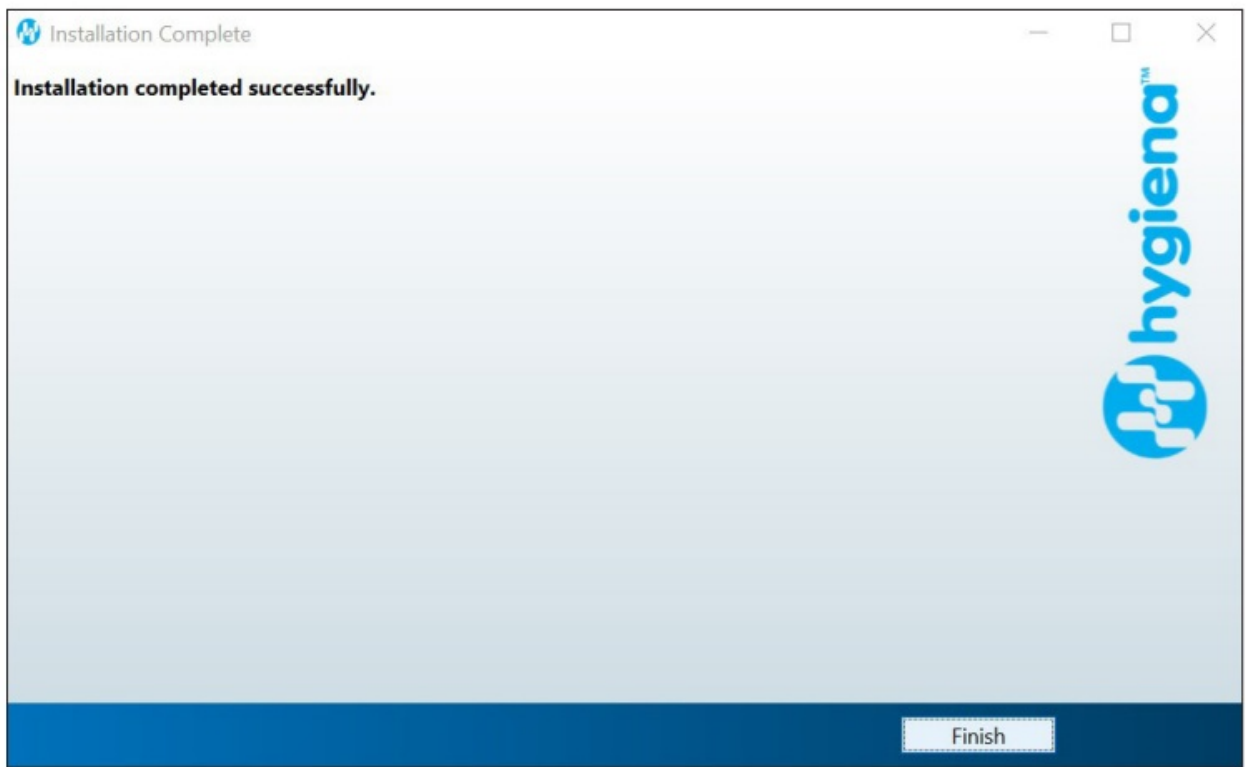
OK

- The install will end after you click on OK. To resolve this issue, please download and install the patch vc_redist.x64.exe from <https://www.microsoft.com/en-us/download/details.aspx?id=52685>. After installing this patch, go back and retry installing the updated BAX System Q7 software.



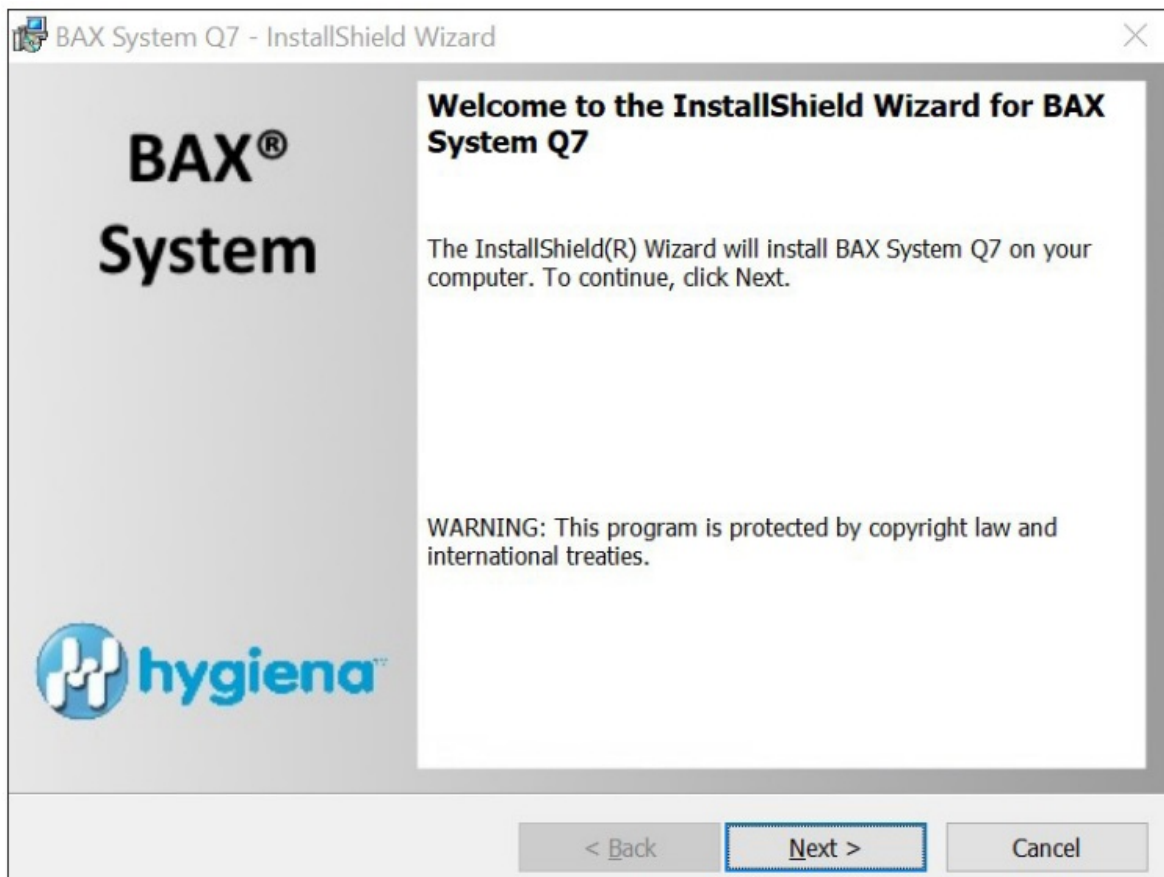




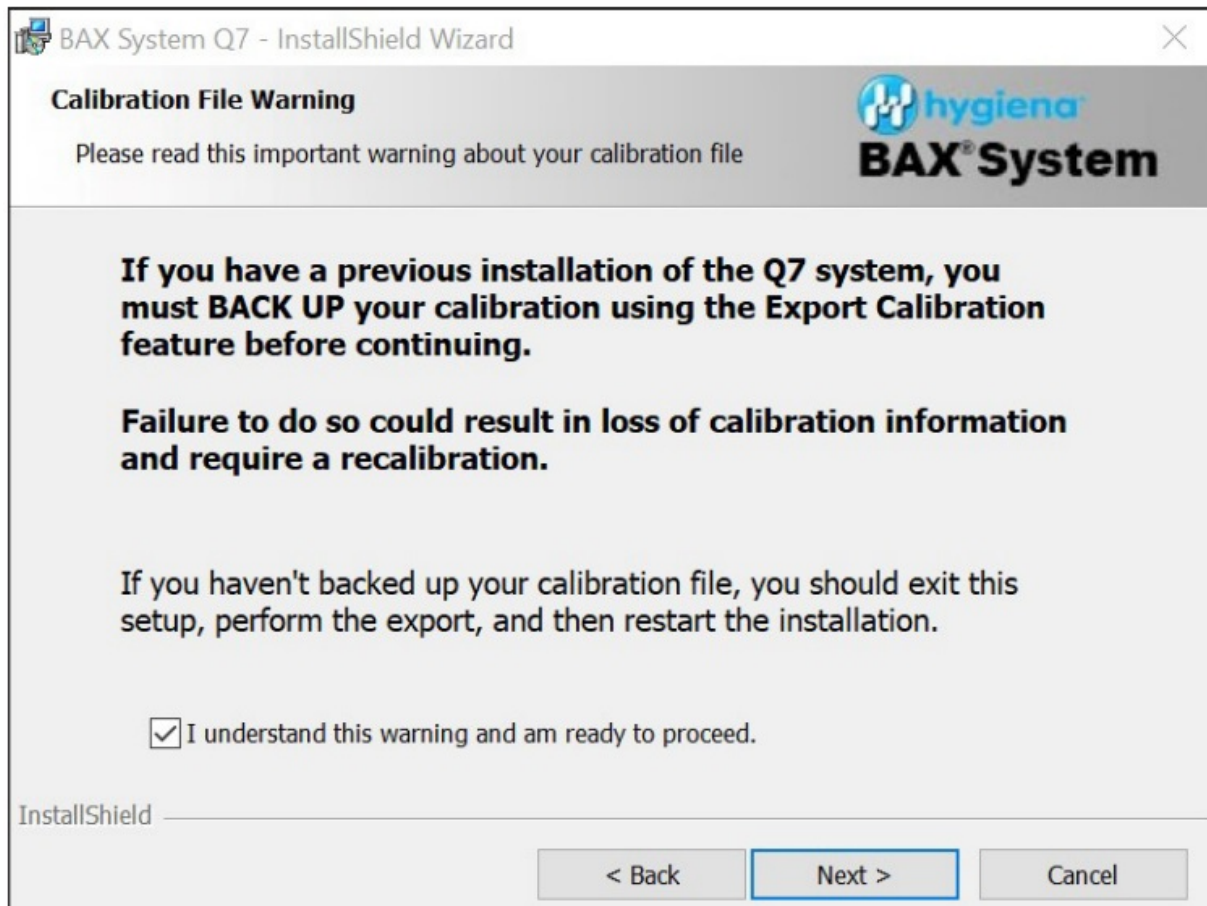


5. Following MATLAB installation, the BAX Q7 application install will initiate.
Read the prompts carefully. Choose the default responses.

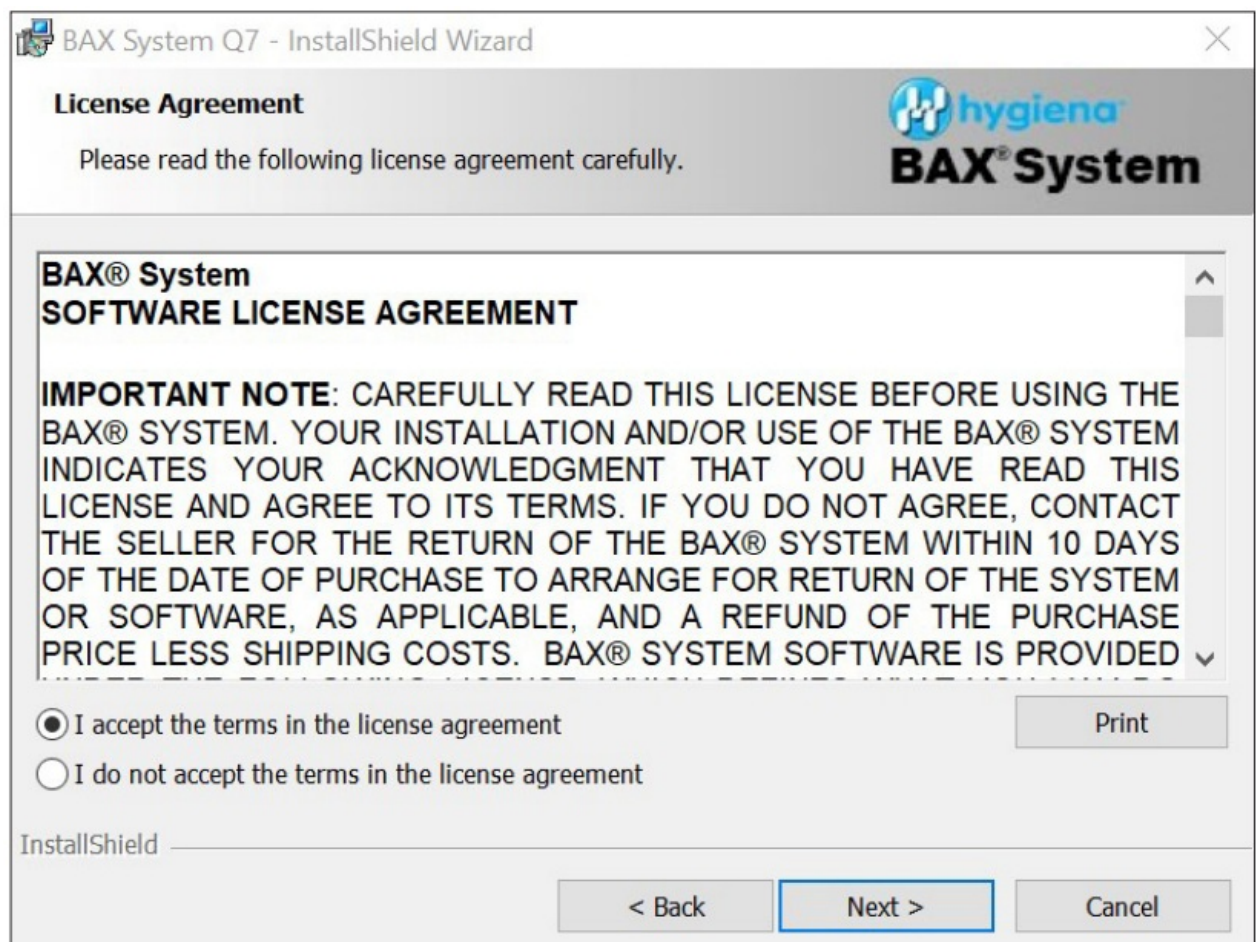
- Welcome Window – click Next.



- Calibration File Warning – ENSURE YOU HAVE BACKED UP THE CALIBRATION FILE
- Check box and click Next.

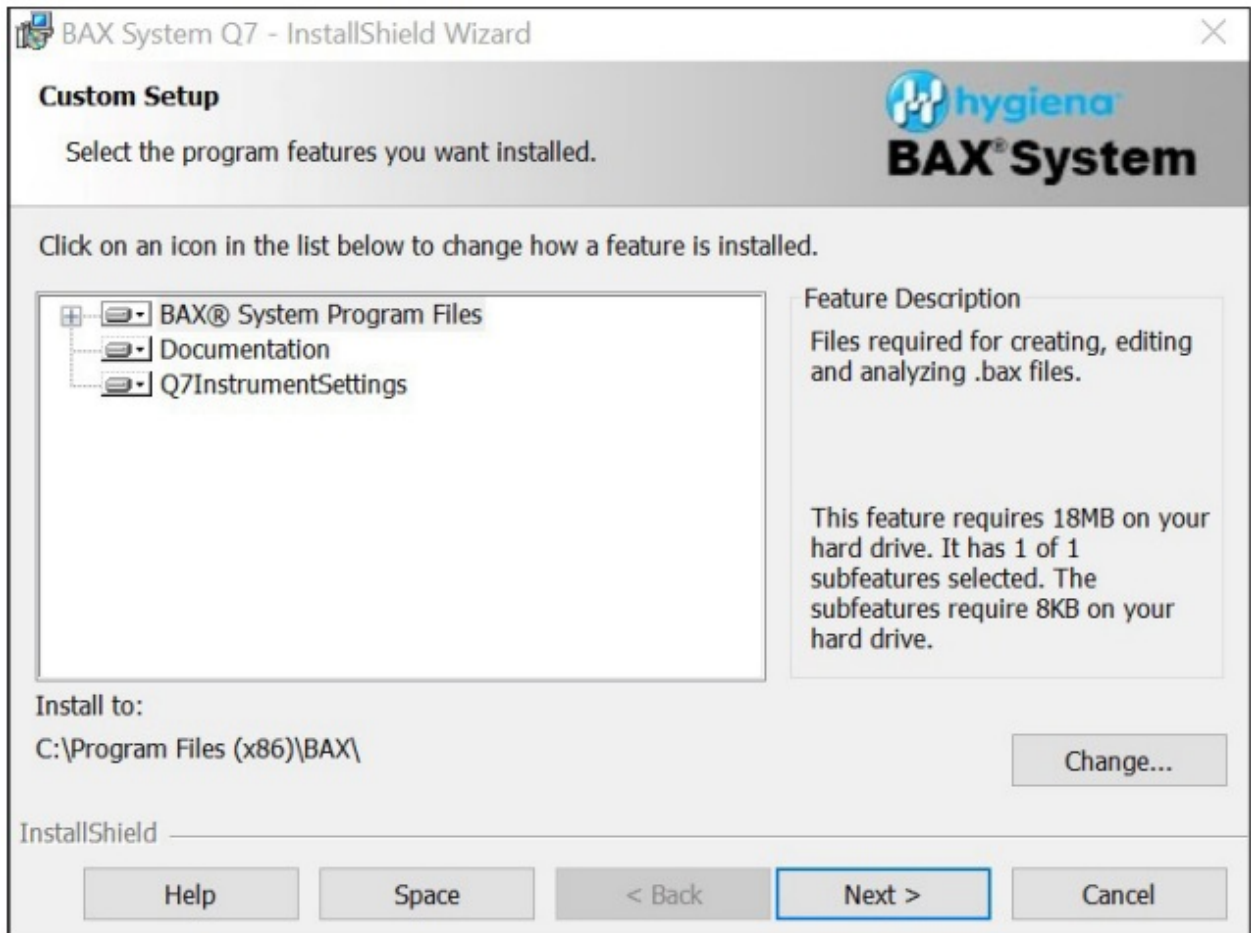


- License Agreement
- Check Accept Terms box and click Next.



- Custom Setup

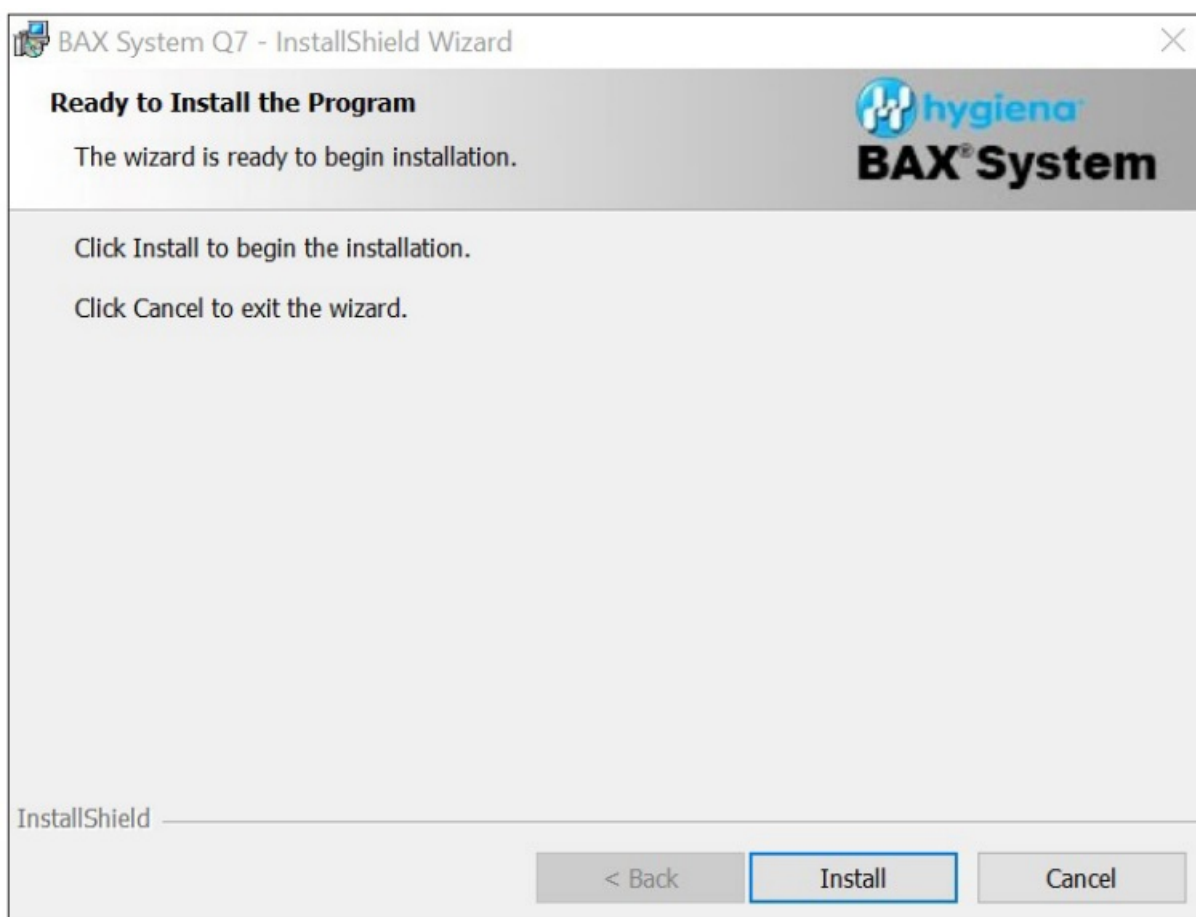
- Click Next



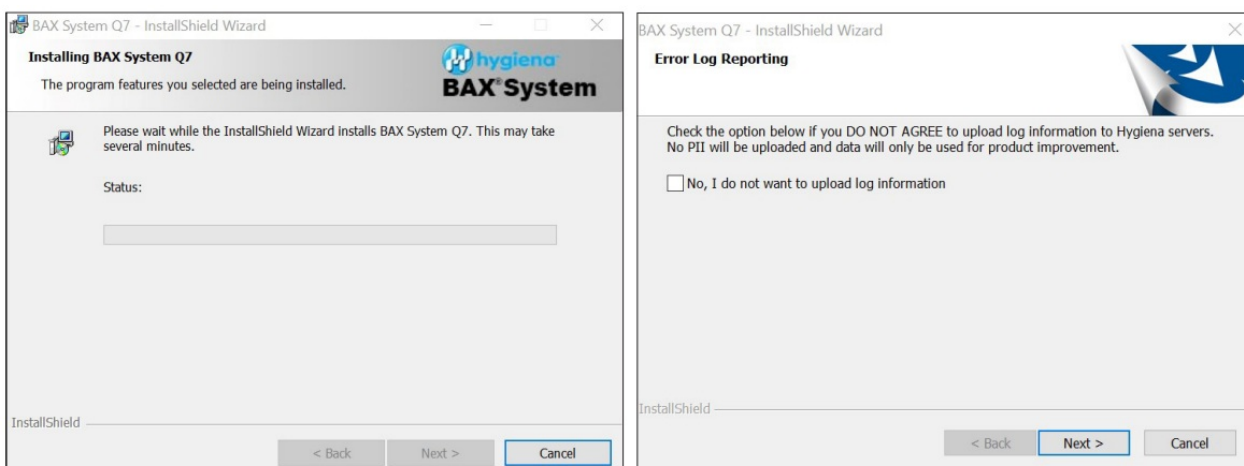
- Password Protection
- BAX default is disabled password protection. Choose an option for your lab, then click Next.



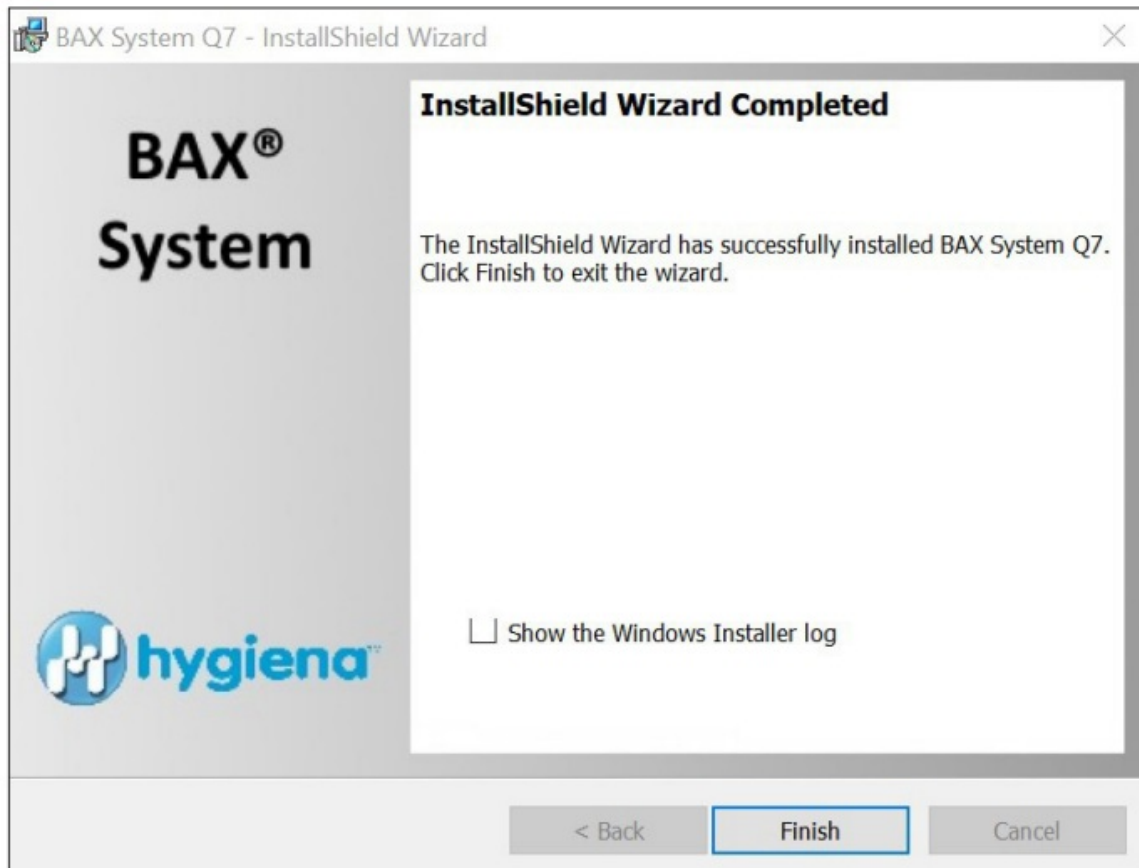
- Ready to Install Program
- Click Install.



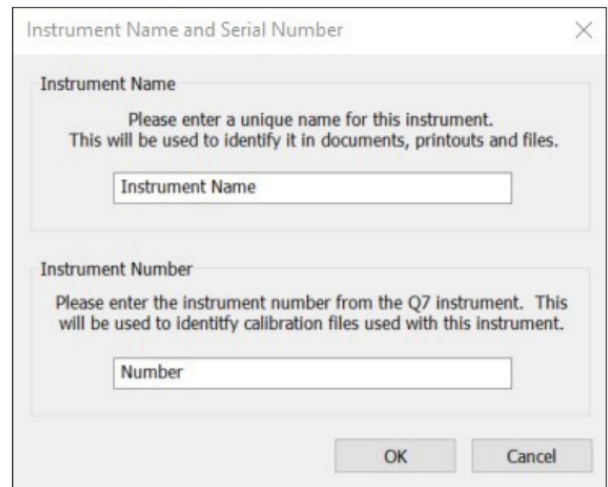
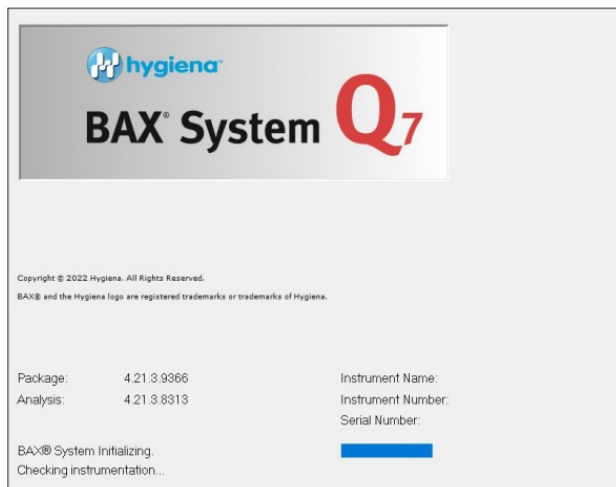
- Installing BAX System Q7 Software
- During installation, an Error Log Reporting window will pop-up. We recommend NOT checking the box so the system can collect software and/or hardware errors in the Log Files to assist Diagnostics Support in troubleshooting. However, please review and decide what is appropriate for your lab.
- Select Next to complete install.



- Install Shield Wizard Complete
- Select Finish.

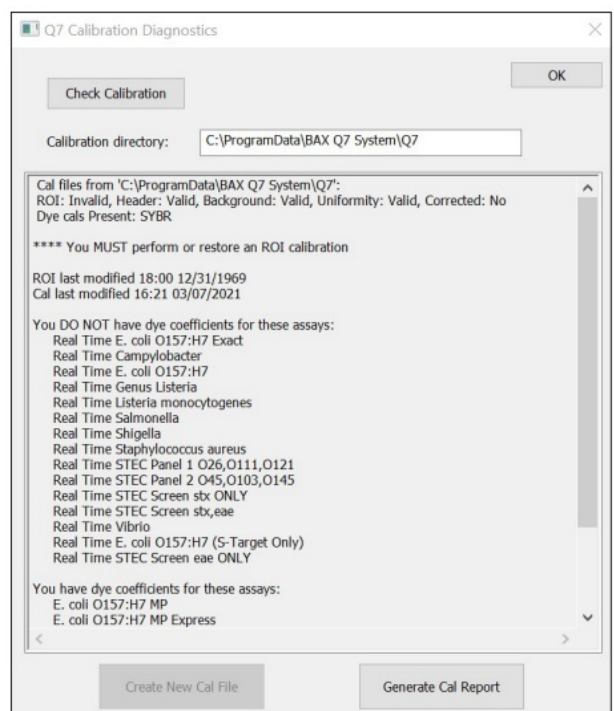
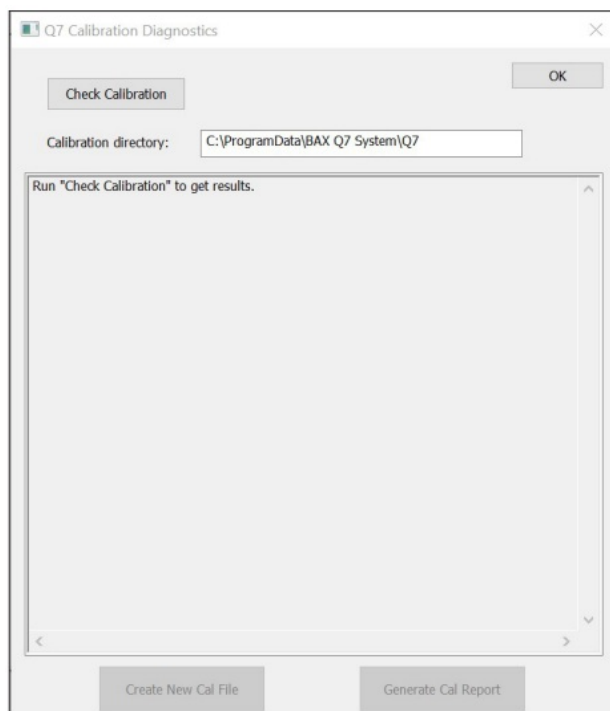


- Click on the desktop icon to initiate program. New open screen will have software version 4.21.3.9366
- Enter Instrument Name and Serial Number
- This will appear on reports and should be utilized.



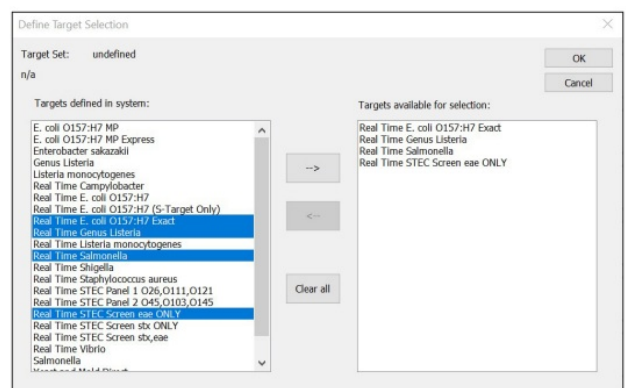
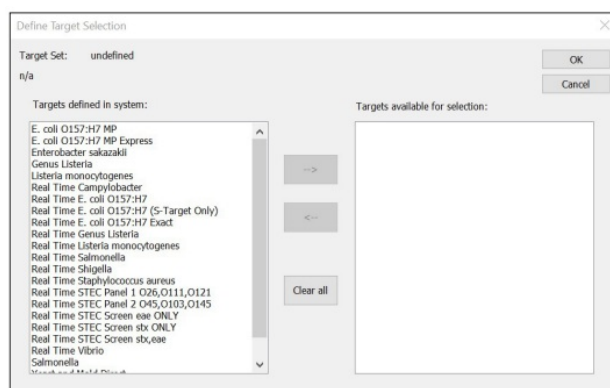
6. CHECK system's calibration (NEW FEATURE)

- From the menu bar, select Diagnostics > Calibration to open the Q7 Calibration Diagnostics window
- Click the Check Calibration button to determine the status:
- If calibration is available, no further actions are needed
- **If calibration is NOT optimal or NOT found:**
Import the backed-up calibration file by selecting Operations > BAX Maintenance > Import Calibration from the menu bar and selecting the backed-up calibration file from step 2.



7. Ready to perform BAX System Analysis


- Define proper targets that are used in your lab by selecting View > Select Targets > then in window, highlight targets being used, and then use arrow buttons to move targets from Define in System to Available for Selection window.



Documents / Resources

[hygiena BAX Q7 Pathogen Detection](#) [pdf] Installation Guide
BAX Q7 Pathogen Detection, BAX Q7, Pathogen Detection, Detection

References

-  [Download Microsoft Visual C++ 2015 Redistributable Update 3 RC from Official Microsoft Download Center](#)

Manuals+.