



Hyfire TAU-CEMD-01 Taurus Conventional Expander Module with Display User Guide

[Home](#) » [Hyfire](#) » Hyfire TAU-CEMD-01 Taurus Conventional Expander Module with Display User Guide 

Contents

- [1 Hyfire TAU-CEMD-01 Taurus Conventional Expander Module with Display](#)
- [2 Product Information](#)
- [3 Product Usage Instructions](#)
- [4 THE BOX](#)
- [5 INSIDE THE BOX](#)
- [6 IMPORTANT TO CONSIDER](#)
 - [6.1 UNBOXING](#)
- [7 MOUNTING STEPS](#)
- [8 Documents / Resources](#)
- [9 Related Posts](#)



Hyfire TAU-CEMD-01 Taurus Conventional Expander Module with Display



Product Information

TAU-CEMD-01 Hyfire Taurus Conventional Expander Module with Display

The TAU-CEMD-01 Hyfire Taurus Conventional Expander Module with Display is a device that expands the capabilities of a conventional fire alarm control panel. It is designed to be mounted externally and has an IP65 rating, making it suitable for outdoor use. The back box must be installed on a flat wall to retain its IP rating and prevent contamination and moisture ingress.

The product comes with a quick start guide and a QR code that contains the part number and product name. The electronic PCB assembly is removable from the enclosure for installation purposes. The device has a display system with keypad controls for remote commissioning mode, which is enabled by ensuring that the LED indicator alternates between green and yellow colors.

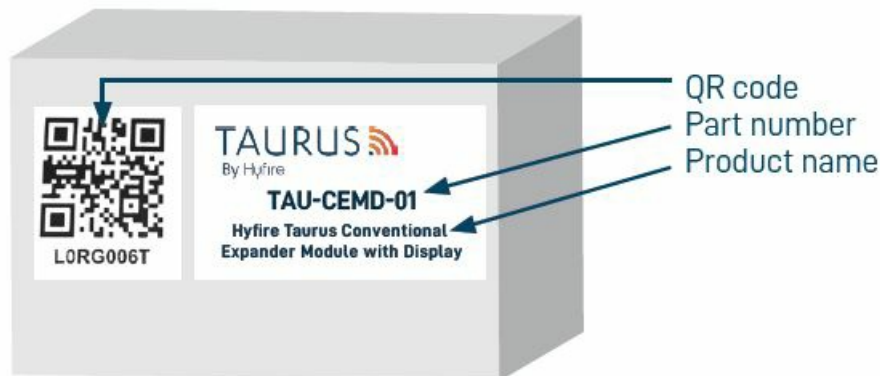
Product Usage Instructions

To install the TAU-CEMD-01 Hyfire Taurus Conventional Expander Module with Display, follow these steps:

1. Remove the top and bottom front plastics that cover screws, unscrew all four screws and remove the lid from the back box.
2. Remove the electronic PCB assembly from the enclosure. The PCB is held by two Philips screws below the display, it then slides up and out.
3. Using a suitable-sized drill bit (4mm), drill the pre-defined screw mounting points in the 4 corners of the backbox.
4. Prepare apertures (20mm knockouts) required for cable access and fit appropriate rated glands.
5. Screw the back box to the wall using all fixing holes and appropriate-sized roundhead screws (do not use countersunk screws).
6. Insert cable, tighten glands and refit PCB and securing screws.
7. Ensure the LED indicates that the discovery mode is enabled, alternating green and yellow colors.
8. Use the keypad and display system to access remote commissioning mode.

For more information on the TAU-CEMD-01 Hyfire Taurus Conventional Expander Module with Display, please refer to the complete product manual. For any further queries or assistance, please contact Hyfire Wireless at T: +44 (0)1926 485282 or E: info@hyfirewireless.co.uk or visit their website at W: www.hyfirewireless.com.

THE BOX



INSIDE THE BOX

- 1 x Expander Module
- 4 x Screws
- 1 x Product Manual
- 1 x Quick start guide
- 1 x QR code

IMPORTANT TO CONSIDER

When mounting a wireless device a comprehensive radio survey should have been carried out to establish the location that provides the best coverage and optimum reach. Taking into consideration the building structure and materials, the survey identifies the wireless infrastructure required and product locations for optimum performance, identifying any factor that could prevent radio integrity.

Avoid fixing or mounting the unit close to the following:

- Equipment that utilises large electrical currents
- Large metal objects or structures
- Fluorescent lighting fittings
- Metal ceiling structures
- IT cabling.

Keep 2 meters minimum spacing between other wireless equipment in the area to avoid signal interference.
EN54 approved environmental temperature range is -10°C to +55°C

UNBOXING

- The Expander has removable top and bottom front plastics to cover screw housings.
- The Expander is housed in an IP65 rated box with knockouts for IP rated glands.
- 4 plastic screws are provided to secure the lid.

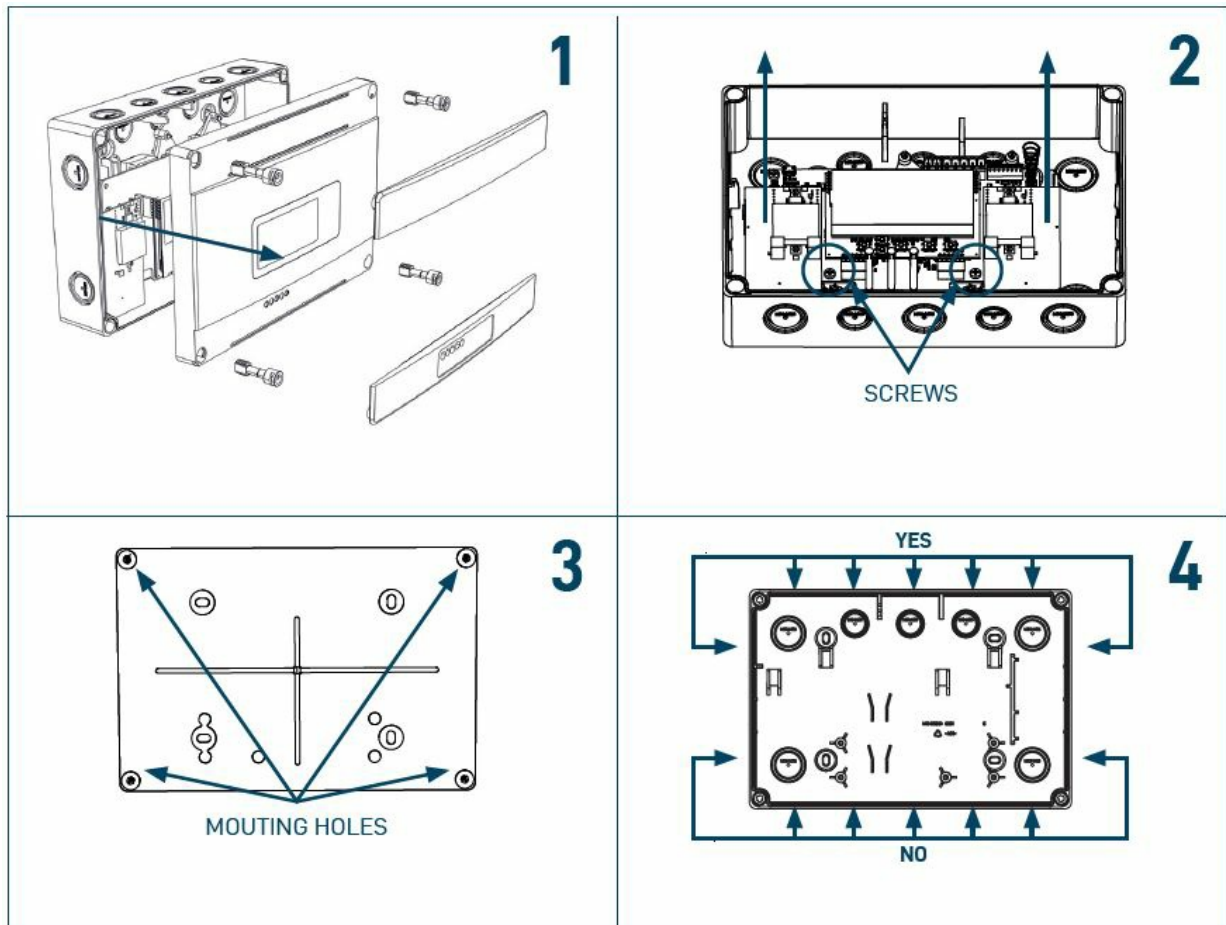
For more information, please refer to the complete product manual.

MOUNTING STEPS

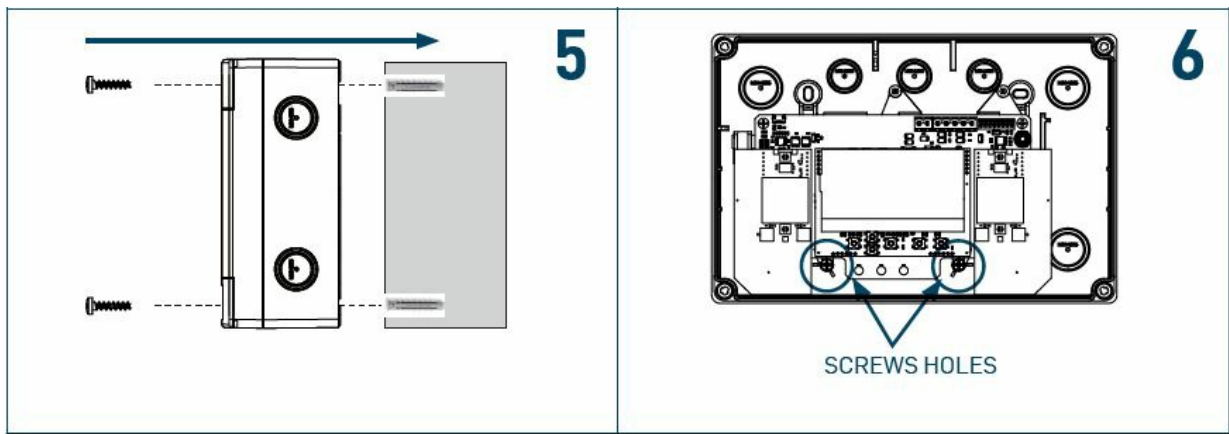
The Expander Module is IP65 rated, suitable for external mounting. The back box must be installed on the wall as flat as possible to retain IP rating, to prevent distortion of the housing and the ingress of contamination and/or moisture.

Proceed as follows to complete the device installation.

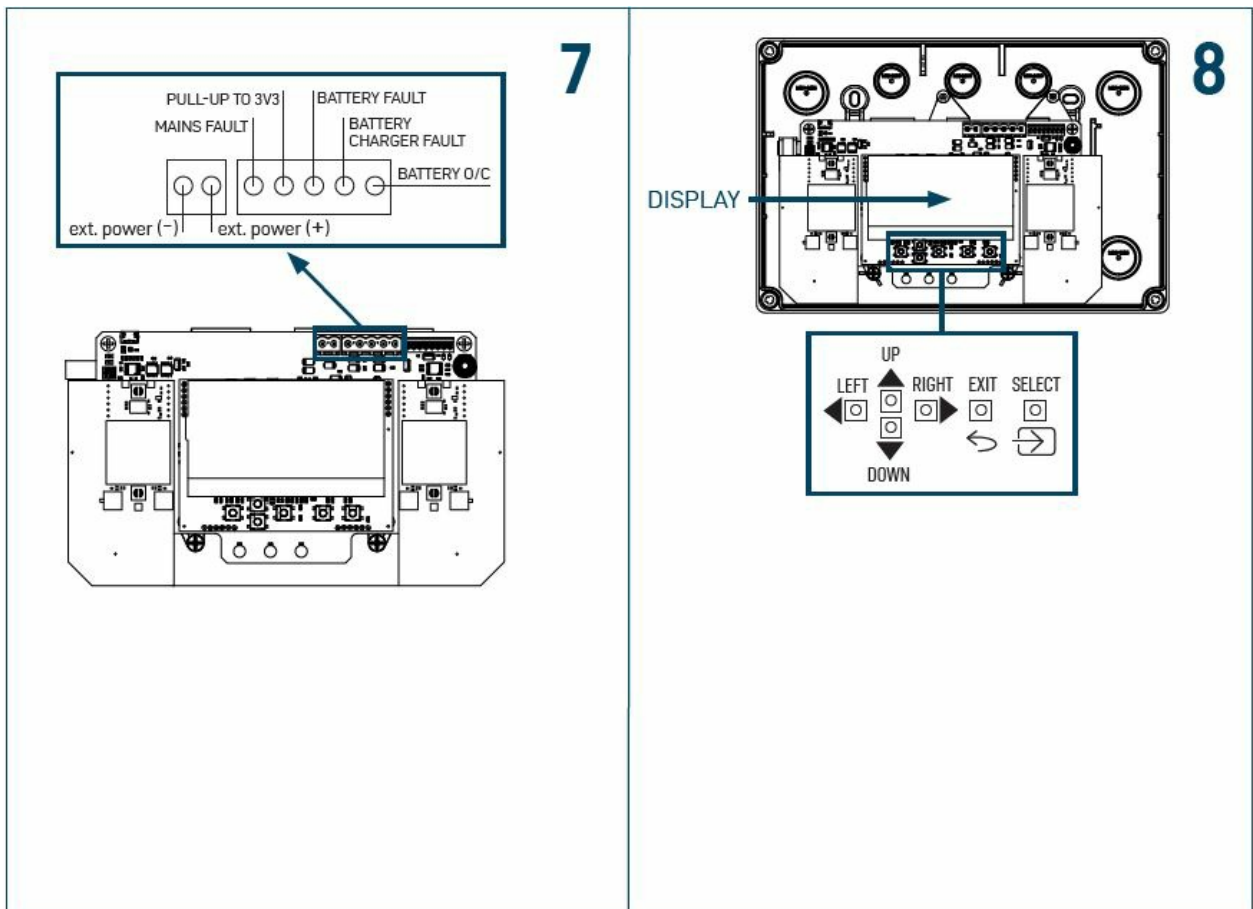
1. Remove top and bottom front plastics that cover screws, unscrew all four screws and remove the lid from the back box.



2. Remove the electronic PCB assembly from the enclosure.
The PCB is held by two Philips screws below the display, it then slides up and out.
3. Using a suitable-sized drill bit (4mm) drill the pre-defined screw mounting points in the 4 corners of the backbox.
4. Prepare apertures (20mm knockouts) required for cable access and fit appropriate rated glands.
5. Screw the back box to the wall using all fixing holes and appropriate-sized roundhead screws (do not use countersunk screws).

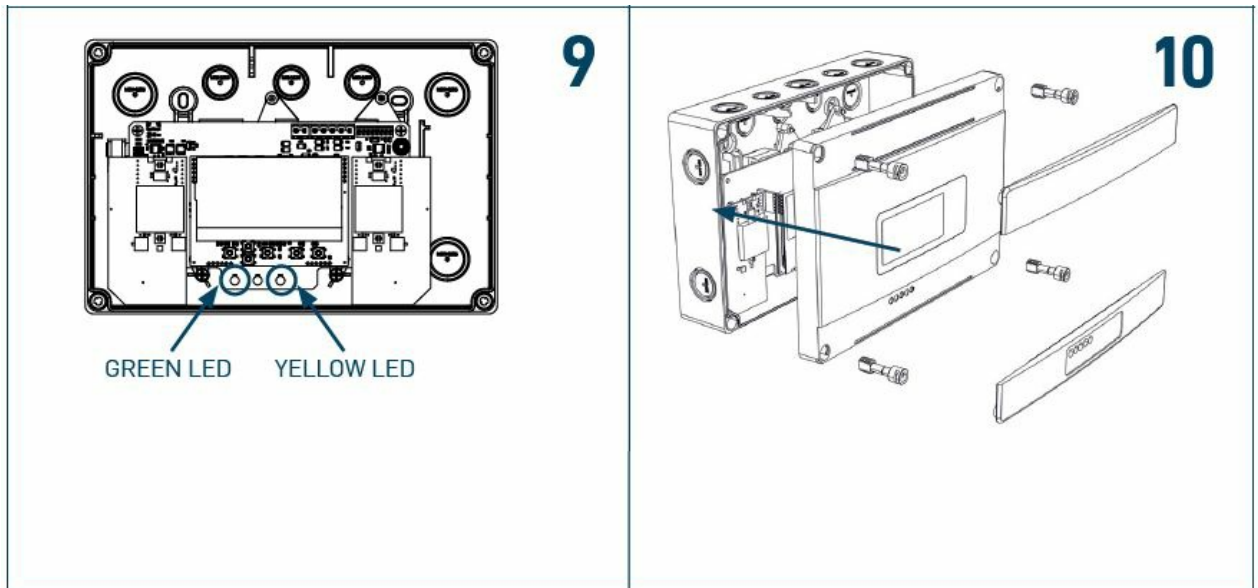


6. Insert cable, tighten glands and refit PCB and securing screws.
7. Connect a wired EN54-4 compliant PSU to the appropriate two terminals.
 - There are also terminals for Fault Monitoring using a feed.
 - You can now apply power to the EN54-4 compliant PSU.



8. To benefit from the remote commissioning mode, ensure you leave the Expander in “discovery” mode. Using the keypad and the display system:
 - Press “select” button.
 - Insert level 1 password (default 0001), using the arrow buttons and confirming with “select” button.
 - Select “Expander Config” using the arrow buttons and press “select” button.
 - Select “Set Discovery Mode” using the arrow buttons and press “select” button.
 - Insert level 2 password (default 0002) using the arrow buttons and confirm with “select” button.
 - Select discovery channel A (or B or C depending on survey results) using the arrow buttons and confirm with “select” button.
 - Press “select” button to start “discovery” mode as shown on the screen.
 - Press “select” button again to confirm.

9. Ensure the LED indicates that the discovery mode is enabled, alternating green and yellow colors.
10. Screw the lid to the back box using the supplied plastic screws and refit top and bottom front plastics that cover screw housings.
 - Put the QR code available in the box either on the system map or on the dedicated pages at the end of expander manual.



Unit B12a, Holly Farm Business Park, Honiley, Warwickshire, CV8 1NP

T: +44 (0)1926 485282, E: info@hyfirewireless.co.uk, W: www.hyfirewireless.com

Documents / Resources



[Hyfire TAU-CEMD-01 Taurus Conventional Expander Module with Display](#) [pdf] User Guide

TAU-CEMD-01, TAU-CEMD-01 Taurus Conventional Expander Module with Display, TAU-CEMD-01 Expander Module with Display, Taurus Conventional Expander Module with Display, Taurus Conventional Expander Display, Taurus Conventional Expander, Conventional Expander