



HYBRID POWER 1175001 Feather Duck Falls Cascading Water Feature Instruction Manual

[Home](#) » [HYBRID POWER](#) » HYBRID POWER 1175001 Feather Duck Falls Cascading Water Feature Instruction Manual 

Contents

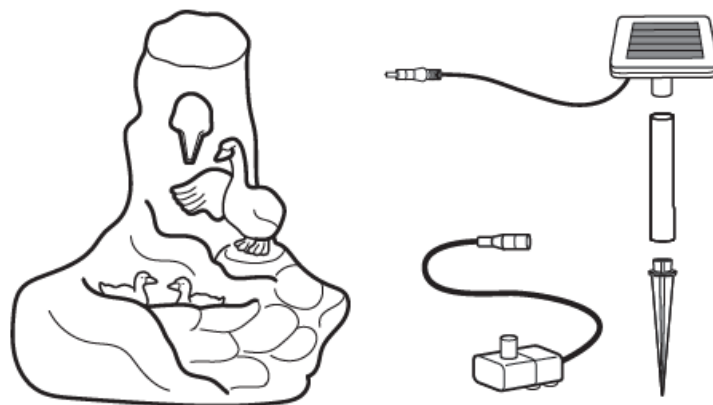
- [1 HYBRID POWER 1175001 Feather Duck Falls Cascading Water Feature](#)
- [2 CONTENTS](#)
- [3 ASSEMBLY](#)
- [4 PANEL MOUNTING](#)
- [5 PERFORMANCE](#)
- [6 MAINTENANCE](#)
- [7 PUMP CLEANING](#)
- [8 WARRANTY](#)
- [9 CONTACT](#)
- [10 Documents / Resources](#)
 - [10.1 References](#)



HYBRID POWER 1175001 Feather Duck Falls Cascading Water Feature

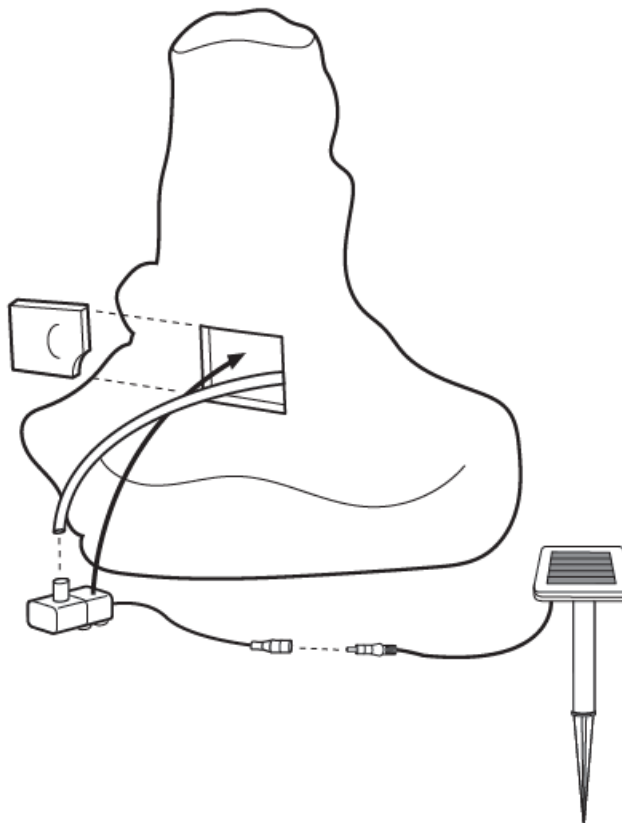


CONTENTS

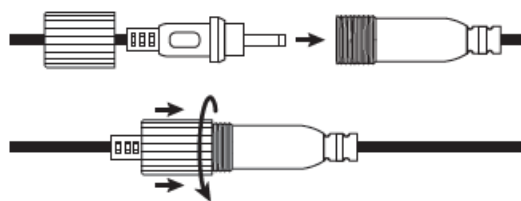


ASSEMBLY

1. Attach the pump to the bottom of the tube.
2. Completely fill the main base with water. Water must be regularly topped up so that the pump does not run dry.
3. Place pump into the base via the slot on the back of the fountain.
4. Fit pump cable to solar panel cable.
5. Slide the panel into place
at the back of the fountain.
6. Please note: The water level should be regularly checked and topped up so that the pump does not run dry, and keep the fountain clear of leaves and debris to prevent the pump from getting clogged up.

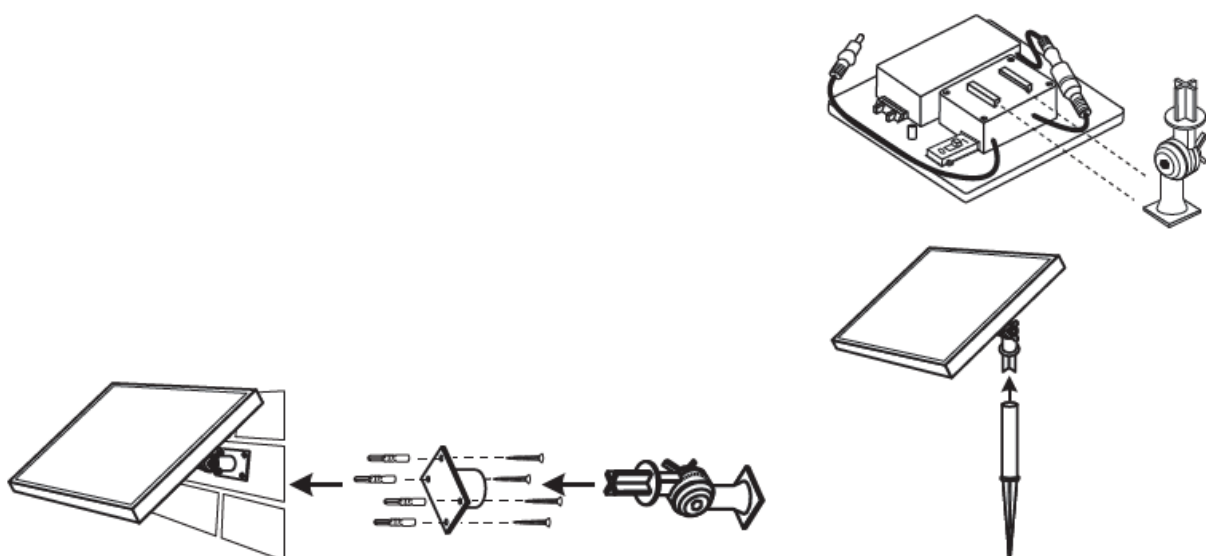


Ensure connectors are water-tight



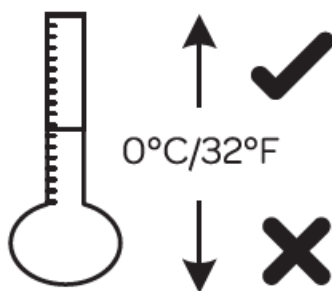
PANEL MOUNTING

- Solar panels can be mounted using the ground spike or wall/deck bracket.
- Slide the pivot assembly onto the back of the panel and then use your selected mounting option.



FROST

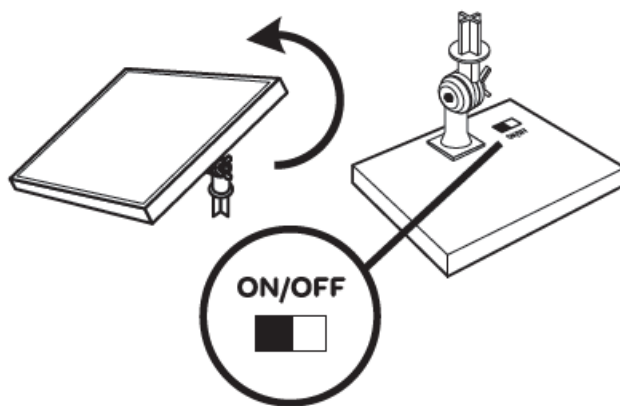
- Frost causes damage, so we recommend that you store the whole fountain inside during cold weather.



PERFORMANCE

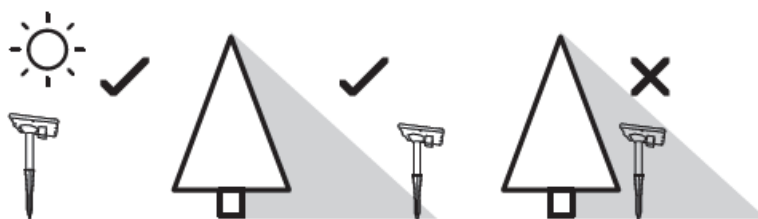
This product is designed primarily to operate in summer months but will also work in spring and autumn provided there is good sunshine. Performance is directly related to the amount and strength of sunlight received.

- When the switch is set to the “On” position; If the sun is strong, the solar panel supplies power to the water pump and charges the battery.
- If the sunlight is weak, the solar panel and the battery together supply power to the water pump.
- If there is no sunlight at all, the battery supplies power to the pump until the battery is depleted.
- When the switch is set to the “off” position, and the solar panel is in the sun, the water pump stops working and the solar panel will charge the battery.
- When fully charged the battery will provide an additional 4-6 hours of water pump usage.



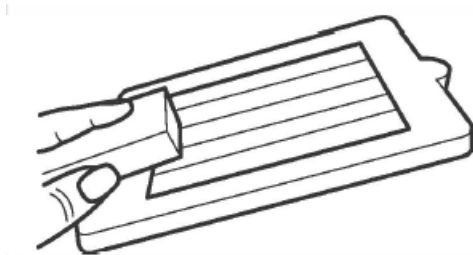
POSITION

- Position the solar panel to receive the maximum amount of sunlight.



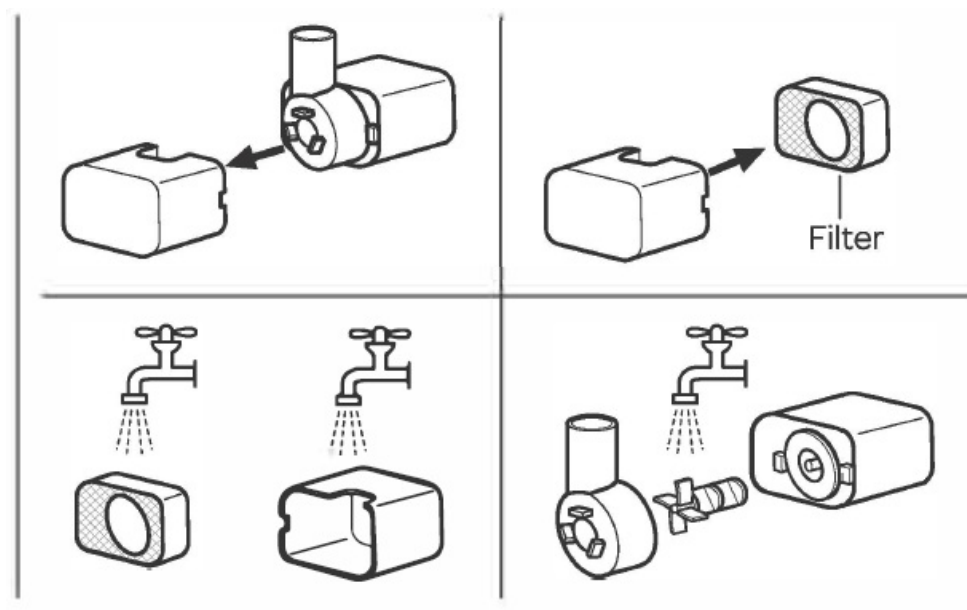
MAINTENANCE

- Regularly clean the solar panels using water or glass cleaner, in conjunction with a non-abrasive sponge.



PUMP CLEANING

- We recommend regular maintenance and water changes to ensure optimum performance.



PROBLEM-SOLVING

1. Check the solar panel is positioned correctly.
2. Check that the pump filter is clean.
3. Check that there is sufficient water in the bowl.
4. Check that there is no debris in the bowl blocking the pump.
5. If problems persist please contact customer services.

WARRANTY

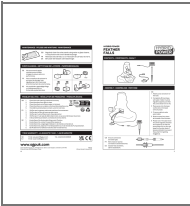
1 YEAR WARRANTY

- Email: uksupport@sgpuk.com
- Email: euservice@sgpuk.com
- Tel: +44(0)1443 843306

CONTACT

- www.sgpuk.com.
 - Smart Garden Products Ltd., 2 Pentagon South, Barton Lane, Abingdon, Oxfordshire, OX14 3PZ 9 Rue de Conde, 33000 Bordeaux, France.
-

Documents / Resources

	HYBRID POWER 1175001 Feather Duck Falls Cascading Water Feature [pdf] Instruction Manual 1175001 Feather Duck Falls Cascading Water Feature, 1175001, Feather Duck Falls Cascading Water Feature, Duck Falls Cascading Water Feature, Cascading Water Feature, Water Feature, Feature
---	--

References

- [User Manual](#)

[Manuals+](#), [Privacy Policy](#)

This website is an independent publication and is neither affiliated with nor endorsed by any of the trademark owners. The "Bluetooth®" word mark and logos are registered trademarks owned by Bluetooth SIG, Inc. The "Wi-Fi®" word mark and logos are registered trademarks owned by the Wi-Fi Alliance. Any use of these marks on this website does not imply any affiliation with or endorsement.