



Hunter Wind-Clik Wind Sensor Instruction Manual

[Home](#) » [Hunter](#) » Hunter Wind-Clik Wind Sensor Instruction Manual 

Contents

- [1 Hunter Wind-Clik Wind Sensor](#)
- [2 Product Information](#)
- [3 INTRODUCTION](#)
- [4 Mounting](#)
 - [4.1 MOUNTING LOCATION](#)
- [5 Wiring to your Irrigation System](#)
 - [5.1 Other Controllers](#)
- [6 Adjustments](#)
- [7 Operation](#)
- [8 Documents / Resources](#)
 - [8.1 References](#)
- [9 Related Posts](#)

Hunter®

Hunter Wind-Clik Wind Sensor



Product Information

The Wind-Clik is a weather sensor that is designed to measure wind speed and provide an automatic shutoff feature for irrigation systems during high wind conditions. It is compatible with most irrigation controllers and is easy to install.

INTRODUCTION

In most installations, the Wind-Clik acts as a switch to break the circuit to the solenoid valves of the irrigation system during high wind conditions. This allows the timer to advance as scheduled but keeps the valves from opening the water flow. Once the wind conditions drop below the reset point, the switch closes again to permit normal operation. This is performed by the wind action of the vanes. They rotate about 180°, and do not spin. There are arrow indicators on the top part of the housing that indicates the direction of rotation from rest. The switching action occurs about midway in the range of rotation.

Mounting

The housing of the Wind-Clik is designed to slip over the end of 2 (50 mm) PVC pipe. The length and mounting of the pipe should be determined by the user depending on the needs of the installation. The pipe can be inserted directly into the ground as a post or screwed into a wooden deck post. When mounting the Wind-Clik, avoid obstructions that block wind, if possible. It should be located so that the prevailing wind is not obstructed when there are nearby buildings. Placing the Wind-Clik at a height of about 6' (2 m) above ground is usually satisfactory for proper irrigation system control.

The housing of the Wind-Clik is designed to slip over the end of 2" (50 mm) PVC pipe. The length and the mounting of the pipe should be determined by the user depending on the needs of the installation. For example, the pipe could be inserted directly into the ground as a post, or a short length could be screwed into a wooden deck post.

MOUNTING LOCATION

Avoid obstructions that block wind, if possible. When there are buildings nearby, the Wind-Clik should be located so that the prevailing wind is not obstructed. Although installing the Wind-Clik up high is not always necessary, it is a good way to avoid obstructions. Wind speed often varies according to the height of the air column above the ground. For proper irrigation system control, placing the Wind-Clik at a height of about 6' (2 m) above ground is

usually satisfactory.

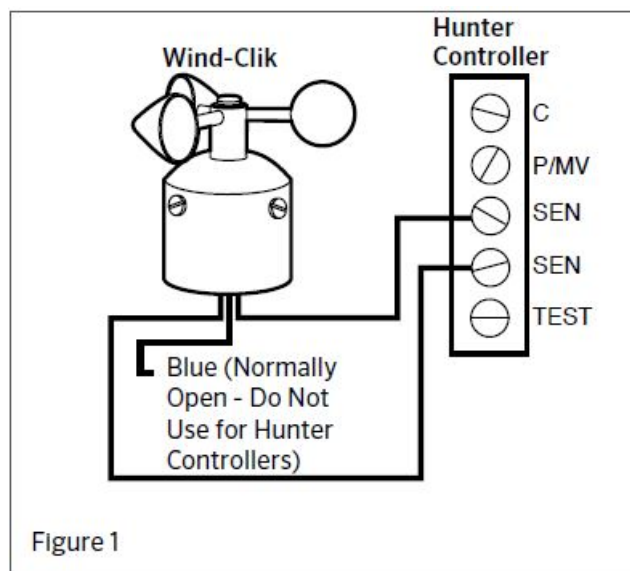
Wiring to your Irrigation System

Wiring the Wind-Click to your irrigation system is easy. For Hunter controllers, remove the jumper from the two SEN terminals and route the wires from the rain sensor up through the same conduit opening used for valve wiring. Connect one wire to the terminal labeled SEN and the other wire to the other SEN or SEN COM terminal. For other controllers, use the common and normally closed wire to break the solenoid common circuit. For a controller with sensor inputs, use either the N.C. or N.O. wire depending on the controller's instructions.

Wiring to a Hunter Controller

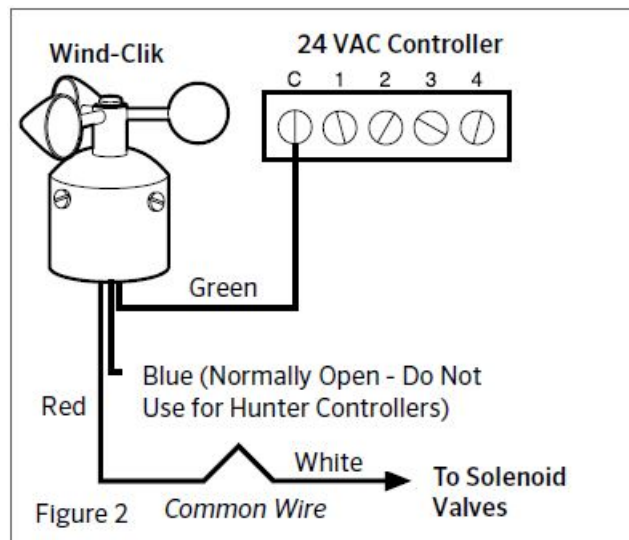
The Wind-Click connects directly to the X2TM X-Core®, XC Hybrid, Pro-C®, |CC2, I-Core® ACC, ACC2, and Hydrowise® controllers. This allows you to easily override the sensor by using the Sensor switch on the front panel:

1. Remove the jumper from the two "SEN" terminals.
2. Route the wires from the rain sensor up through the same Conduit opening used for valve wiring.
3. Connect one wire to the terminal labeled "SEN" and the other wire to the other "SEN" or "SEN COM" terminal (Figure 1).

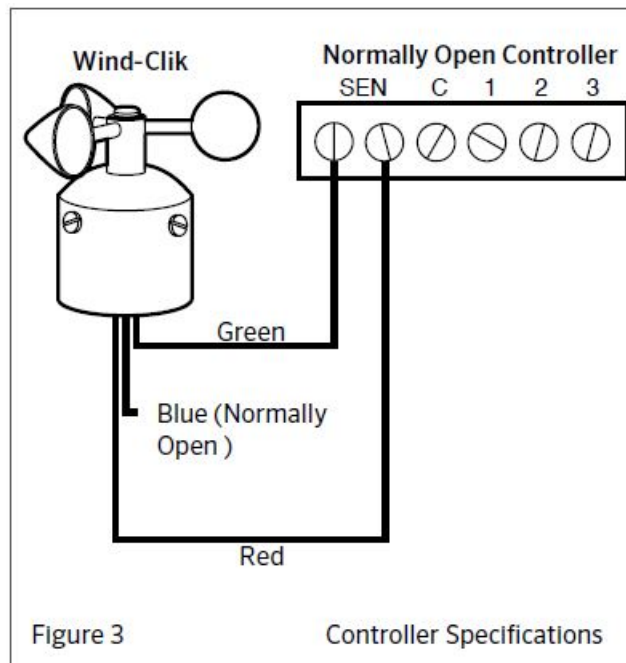


Other Controllers

The two most common situations are shown below. For nonstandard wiring situations, please consult your distributor or request our nonstandard Wiring information packet. For sprinkler systems, use the Common and normally closed wire to break the solenoid common circuit (Figure 2).



For a controller with sensor inputs, use either the N.C. or N.O. wire depending on the controller's instructions (Figure 3).



Adjustments

The Wind-Clik has dial knobs that allow you to adjust the wind speed settings. Do not try to move the dial knobs counterclockwise past the lowest speed setting, or go past the highest speed setting.

The large knob is the switching (actuation) speed in mph. For example, if the unit is wired normally closed, the dial will indicate the wind speed that will trigger the unit to switch open. The small knob is the reset speed. This is the wind speed that the wind will have to slow down to to reset the switch (closed, in this example). The reset speed should always be set lower than the switching speed. If the reset speed is set the same or higher than the switching speed, extreme switch chatter could occur (i.e., on-off-on-off). The difference between the two settings will largely determine the cycling of the system being controlled. The larger the difference, the longer the cycle.

NOTE:

Do not try to move the dial knobs counterclockwise past the lowest speed setting, or go past the highest speed setting.

Operation

The Wind-Clik has built-in damping to alleviate the problem of short gusts of wind. Therefore, the wind speed settings, while accurate under controlled conditions, are relative averages when configured in the field. The user should make initial wind speed settings and observe vanes rotate back to the rest position will deactivate the switch. If you need further assistance with the Wind-Clik, visit hunterdirect.com/windklikhelp.

There is built-in damping in the unit to alleviate the problem of short gusts of wind. Therefore, the wind speed settings, while accurate under controlled conditions, are actually relative averages when configured in the field. The user should make initial wind speed settings and observe to make sure the Wind-Clik is switching as desired. Incremental adjustments can then be made. Manual operation or testing of the unit can be done by manually rotating the vanes in the direction of the arrows. Switching will occur about 90° from the rest position and stay switched to the end of its travel range (180° from rest). Allowing the vanes to rotate back to the rest position will deactivate the switch (about 45° from the rest position).

Note:

For Hydrowise® controllers, you must complete the installation by configuring the sensor in your Hydrowise account.

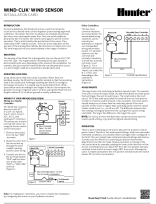
Need help?

Visit hunterdirect.com/windklikhelp.



© 2020 Hunter Industries Inc. Hunter, the Hunter logo, and all other trademarks are property of Hunter Industries, registered in the U.S. and other countries. | hunterindustries.com

Documents / Resources

	Hunter Wind-Clik Wind Sensor [pdf] Instruction Manual Wind-Clik Wind Sensor, Wind Sensor, Sensor
---	---

References

- [Hunter Irrigation Sprinkler Systems | Hunter Industries](#)
- [Hunter Irrigation Sprinkler Systems | Hunter Industries](#)