



Hunter RC-103 Wand Module X2 Controller User Guide

[Home](#) » [Hunter](#) » Hunter RC-103 Wand Module X2 Controller User Guide 

Contents

- [1 Hunter RC-103 Wand Module X2 Controller](#)
- [2 Product Installation](#)
- [3 Hydrawise Setup](#)
- [4 Product Reset](#)
- [5 Compliance](#)
- [6 Documents / Resources](#)
 - [6.1 References](#)



Hunter RC-103 Wand Module X2 Controller



- hunterindustries.com

Thank You for Purchasing a Hydrawise Compatible Device

The WAND Module allows your X2 Controller to connect to the internet via your Wi-Fi router. Once connected, you can access and manage the controller with your smartphone, tablet, or computer. Need more helpful information about your product?



- hunter.help/Wand

Step 1: Wi-Fi signal

A medium to high signal strength is preferred to maintain a stable connection between the controller and the router. In some cases, a Wi-Fi extender should be installed to increase the signal.



Important:

Obstructions such as interior walls and landscaping can block the signal.

Visit hunter.help/wifispecs to ensure your Wi-Fi network meets the requirements of your Hunter Hydrawise™ ready controller.

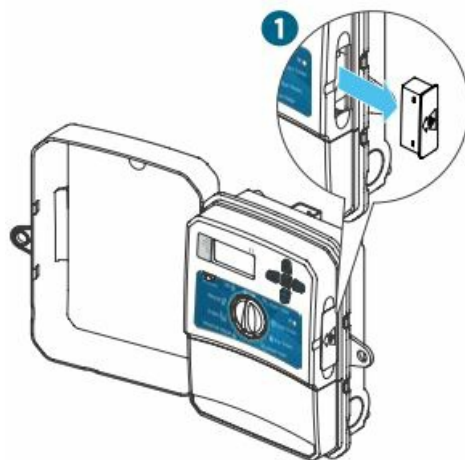


- hunterindustries.com

Product Installation

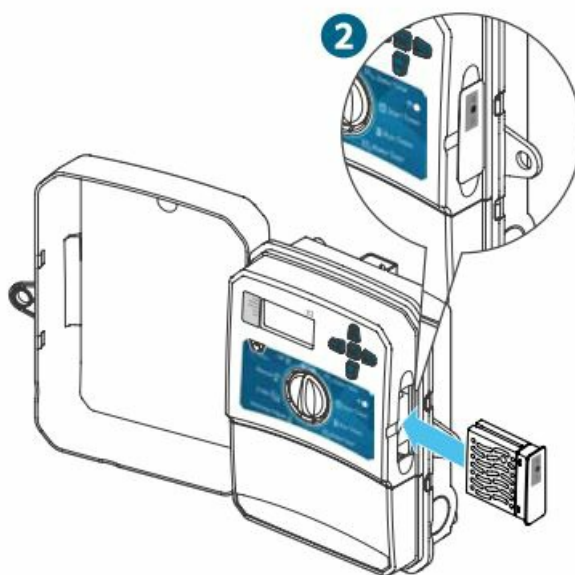
Step 2: Installing the WAND Module

1. Remove the Wi-Fi cover from the X2 Controller.



When installed, the WAND Module disables the X2 Controller's dial and button functions, the existing schedule, and settings.

2. Insert the WAND Module.



All programming is now managed via cloud-based Hydrawise Software from a smartphone, tablet, or desktop browser.

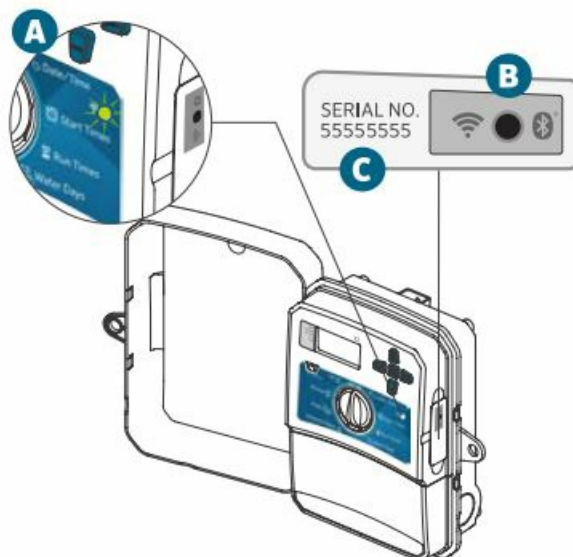
Note: Manual operation functions such as Start/Stop Station and Test All Stations can still be activated from the controller.

Step 3: Navigating the WAND Module with the X2 Controller

Locate the following:

- Wi-Fi status LED
- Wi-Fi setup button

- WAND serial number



The serial number is used to enable Hydrowise management for the WAND Module. You will be prompted to enter the serial number during the online setup process when adding the controller to your Hydrowise account. Leave the WAND Module installed with the dial in the RUN position during setup to remain connected to Hydrowise Software. If the WAND Module is removed, the controller will revert to the programs and settings configured via the dial and buttons. To ensure the X2 Controller operates with Hydrowise, you must have the dial in the Run position. The controller will not operate remotely if the dial is in any other position.

Hydrawise Setup

Step 4: Access Hydrowise Software



- Download the Hydrowise App from the Apple® App Store or Google Play™ Store, or click log in on the hydrowise.com website.



- hunter.info/hydrowiseAppiOS




- hunter.info/hydrowiseAppAndroid

Step 5: Adding your controller New Hydrowise account user:

1. Register for a new account in your Hydrowise App or at hydrowise.com.
2. After you have registered, click the “Let’s Get Started” button in the message sent to your email account.

3. Click the “Let’s Get Started” button again on your Hydrowise App or website screen.
4. Continue following all steps to add your X2 Controller to your Hydrowise account and connect to Wi-Fi.


Existing Hydrowise account user

1. Sign in to your Hydrowise App or account.
2. Navigate to “My Controllers” in the My Account  drop-down menu.
3. Click the + icon under My Controllers list.
4. Continue following all steps to add your X2 Controller to your Hydrowise account and connect to Wi-Fi.

Apple and the Apple logo are trademarks of Apple Inc., registered in the U.S. and other countries. App Store is a service mark of Apple Inc. Google Play is a trademark of Google LLC.

Product Reset

To factory reset the WAND Module

1. Press and hold the button on the WAND Module for 5 seconds. “Fdr” (factory default reset) will appear on the controller LCD.
2. The module LED will turn off.
3. Release the button when the solid amber  LED appears and “done” displays on the controller LCD.
4. Return to the online setup wizard in your Hydrowise Controller settings account page to reconnect the WAND Module to Wi-Fi.

Quick troubleshooting tips

- Move into the Wi-Fi signal range and verify with your smartphone.
- Verify the correct Wi-Fi network name and password used.
- Verify the Wi-Fi network is using 2.4 GHz and not 5 GHz.

The Bluetooth® word mark and logos are registered trademarks owned by Bluetooth SIG Inc. and any use of such marks by Hunter Industries is under license.

Solid LED color:




- The WAND Module is waiting for the user to add Wi-Fi credentials.
- The X2 Controller is online and connected to the Hydrowise server.
- Incorrect Wi-Fi password entered or Wi-Fi network lost.

Flashing LED color

- blink, WAND is in Bluetooth® pairing mode.
- blinks, WAND is in “SAP” (Wi-Fi Direct) mode.
- blinks, WAND is in “Pbc” router-supported (WPS push-button) mode.




Refer to the online setup wizard for Wi-Fi instructions found in your Hydrowise controller settings account page.

Firmware Update Codes

1.  **UPd8A** – When online, the LED will turn red and “UPd8A” will appear on the controller upgrading to the latest X2 Controller firmware.
2.  **UPd8b** – When online, the LED will turn amber and “UPd8b” will appear on the controller upgrading to the latest Hydrowise firmware.
3.  **UPd8C** – When online, the LED will stay green and “UPd8C” will appear on the controller upgrading to the latest Wi-Fi firmware.

Refer to the online setup wizard for Wi-Fi instructions found in your Hydrowise controller settings account page.

Firmware Update Codes

1. **UPd8A** – When online, the LED will turn red  and “UPd8A” will appear on the controller upgrading to the latest X2 Controller firmware.
2. **UPd8b** – When online, the LED will turn amber  and “UPd8b” will appear on the controller upgrading to the latest Hydrowise firmware.
3. **UPd8C** – When online, the LED will stay green  and “UPd8C” will appear on the controller upgrading to the latest Wi-Fi firmware.

Compliance

FCC Compliance Notice

This equipment has been tested and found to comply with the limits for a Class B digital device pursuant to Part 15 of the FCC Rules. These limits are designed to provide reasonable protection against harmful interference in a residential installation. This equipment generates, uses, and can radiate radio frequency energy and, if not installed and used in accordance with the instructions, may cause harmful interference to radio communications. However, there is no guarantee that interference will not occur in a particular installation. If this equipment does cause harmful interference to radio or television reception, which can be determined by turning the equipment off and on, you are encouraged to try to correct the interference by taking one or more of the following measures:

- Reorient or relocate the receiving antenna.
- Increase the separation between the equipment and the receiver.
- Connect the equipment into an outlet on a circuit different from that of which the receiver is connected.
- Consult the dealer or an experienced radio/TV technician for help.

This device complies with part 15 of FCC rules. Operation is subject to the following two conditions:

1. This device may not cause harmful interference.
2. This device must accept any interference received, including interference that may cause undesired operation.

Changes or modifications not expressly approved by Hunter Industries could void the user's authority to operate this device. If necessary, consult a representative of Hunter Industries Inc. or an experienced radio/television technician for additional suggestions. The following statement is applicable when an irrigation controller is used with an accessory Wi-Fi device: This equipment complies with FCC radiation exposure limits set forth for an uncontrolled environment. To avoid the possibility of exceeding the FCC radio frequency exposure limits, human proximity to the antenna shall not be less than 7.9" (20 cm) during normal operation. This equipment complies with the IC RSS-102 radiation limits set forth for an uncontrolled environment. This equipment should be installed and operated with a minimum distance of 7.9" (20 cm) from all persons.

Innovation, Science and Economic Development Canada (ISED) Compliance Notice This device contains license-exempt transmitter(s)/receiver(s) that comply with Innovation, Science and Economic Development Canada's license-exempt RSS(s). Operation is subject to the following two conditions:

1. This device may not cause interference, and
2. This device must accept any interference, including interference that may cause undesired operation of the device.

UKCA Declaration of Conformity

Hereby, Hunter Industries declares that the radio equipment type model WAND complies with the Radio Equipment Regulations 2017 – SI 2017 No. 1206. The full text of the UKCA declaration of conformity is available at the following internet address: subsite.hunterindustries.com/compliance/

Certificate of Conformity to European Directives


Hereby, Hunter Industries declares that the radio equipment type model WAND complies with Directive 2014/53/EU. The full text of the EU declaration of Conformity is available at the following Internet address: subsite.hunterindustries.com/compliance/

- Bluetooth Maximum Output Power
 - **Frequency Band (MHz):** 2.402 – 2.480
 - **Max. Power (dBm):** 3.8
- WLAN Maximum Output Power
 - **Frequency Band (MHz):** 2.412 – 2.472
 - **Max. Power (dBm):** 17.5

HUNTER INDUSTRIES | Built on Innovation® 1940 Diamond Street, San Marcos, CA 92078 USA

hunterindustries.com 2023 Hunter Industries Inc. Hunter, the Hunter logo, and other marks are trademarks of Hunter Industries Inc., registered in the U.S. and certain other countries.

Documents / Resources

	<p>Hunter RC-103 Wand Module X2 Controller [pdf] User Guide</p> <p>RC-103 Wand Module X2 Controller, RC-103, Wand Module X2 Controller, Module X2 Controller, Controller</p>
-------------------------------------------------------------------------------------	----------------------------------------------------------------------------------------------------------------------------------------------------------------------------------------------

References

- [!\[\]\(cd3e54d951a9fb854f48e4697cf550f9_img.jpg\) Hydrawise - Apps on Google Play](#)
- [!\[\]\(cc729e263f29c0a76fbdc4cfe67fceb0_img.jpg\) Hydrawise on the App Store](#)
- [!\[\]\(90d36d418f8f7ab67431ba2525e00a5e_img.jpg\) Hunter Irrigation Sprinkler Systems | Hunter Industries](#)
- [!\[\]\(f70e40faeec369ff477dbaef549ee05b_img.jpg\) Hydrawise | Smart Wi-Fi Irrigation Control](#)
- [!\[\]\(ca68c0c79a5dc0026aa1d011fda2b676_img.jpg\) subsite.hunterindustries.com - /compliance/](#)
- [User Manual](#)