

Contents [[hide](#)]

- [1 Hunter EZ-LR EZ Decoder System](#)
- [2 INSTALLATION GUIDE](#)
- [3 OPERATING SPECIFICATIONS](#)
- [4 FCC](#)
- [5 CUSTOMER SERVICE](#)
- [6 Documents / Resources](#)
 - [6.1 References](#)

Hunter®

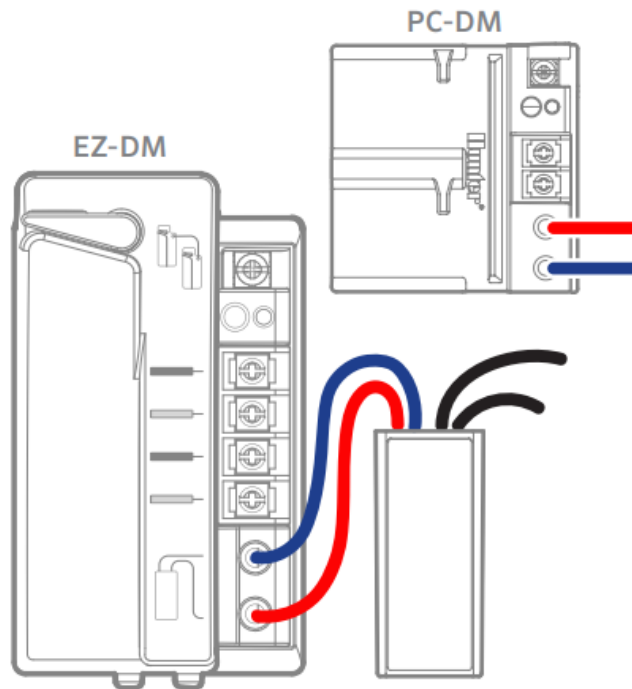
Hunter EZ-LR EZ Decoder System



INSTALLATION GUIDE

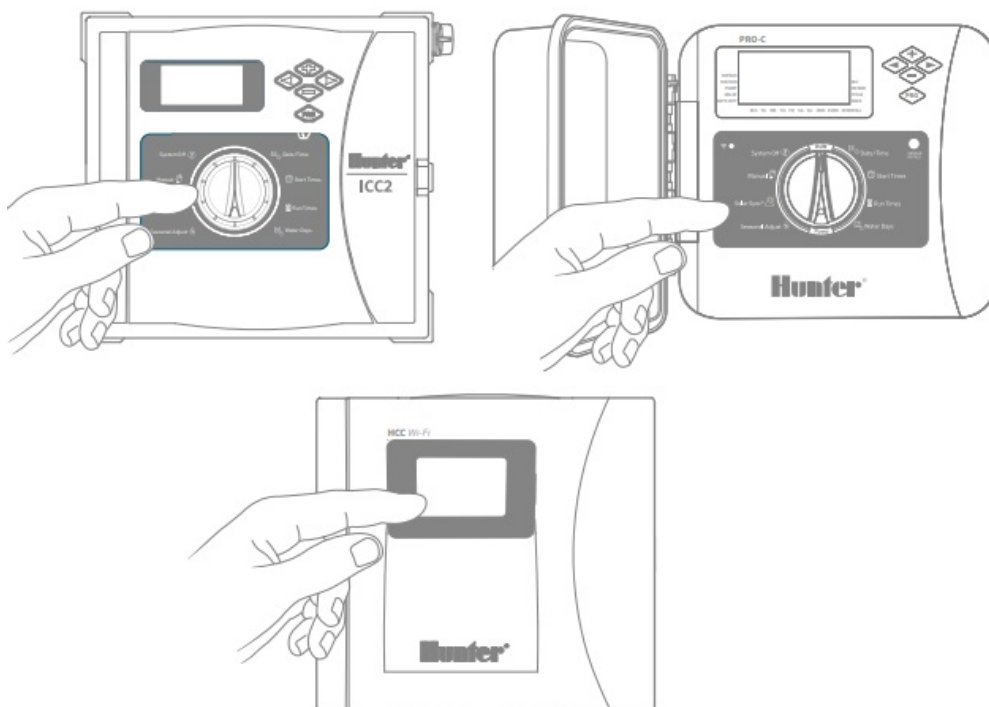
TO PROGRAM A STATION DECODER

- Insert EZ-LR red and blue wires in the programming ports on the EZ-DM or PC-DM Output Module.



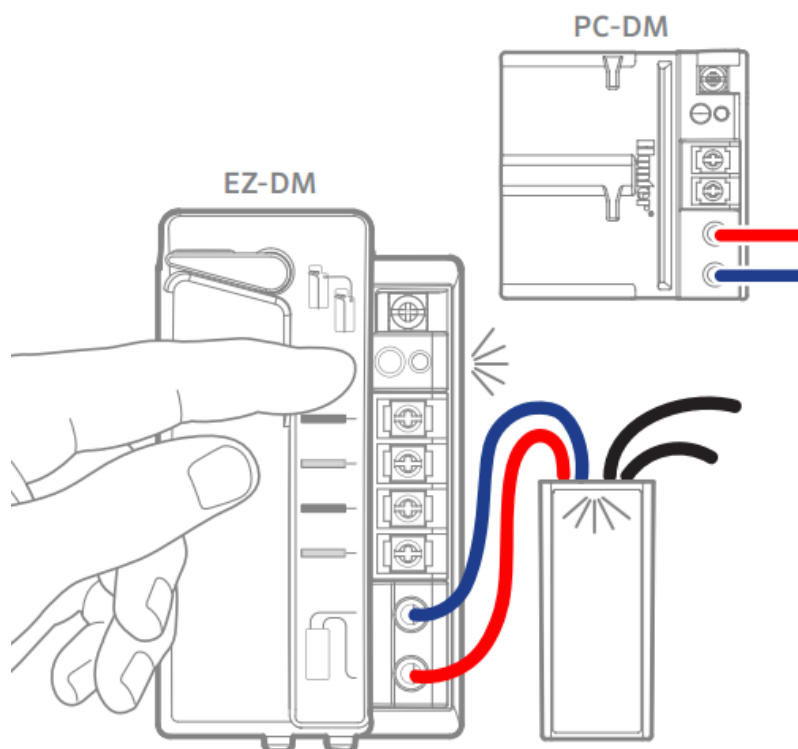
START THE STATION NUMBER

- Use the controller face panel (or remote control, if so equipped) to manually start the station number you want to program into the decoder.



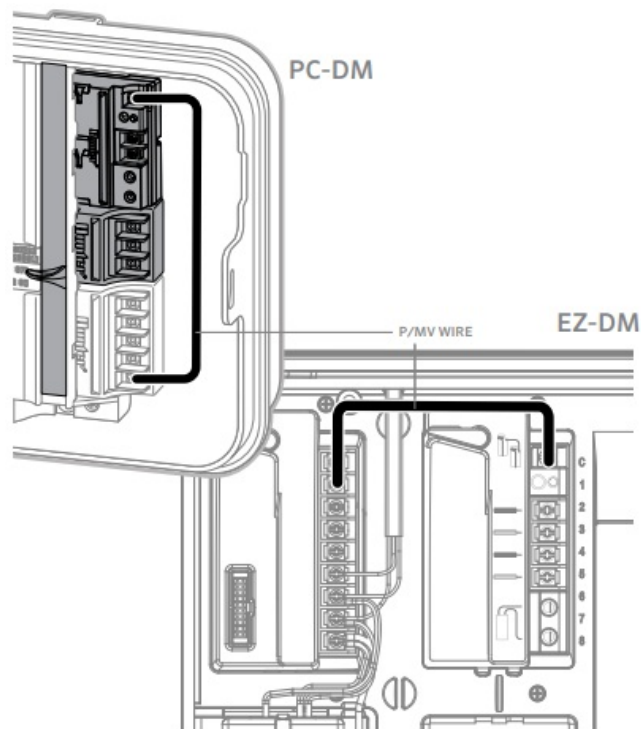
PROGRAM THE DECODER

- When the station is running, press the PRG button on the Decoder Output Module. The decoder is programmed when the LED flashes.
- Write the station number on the decoder label with a permanent marker.
- **WARNING:** DO NOT USE DUPLICATE DECODER ADDRESSES IN THE SAME CONTROLLER.



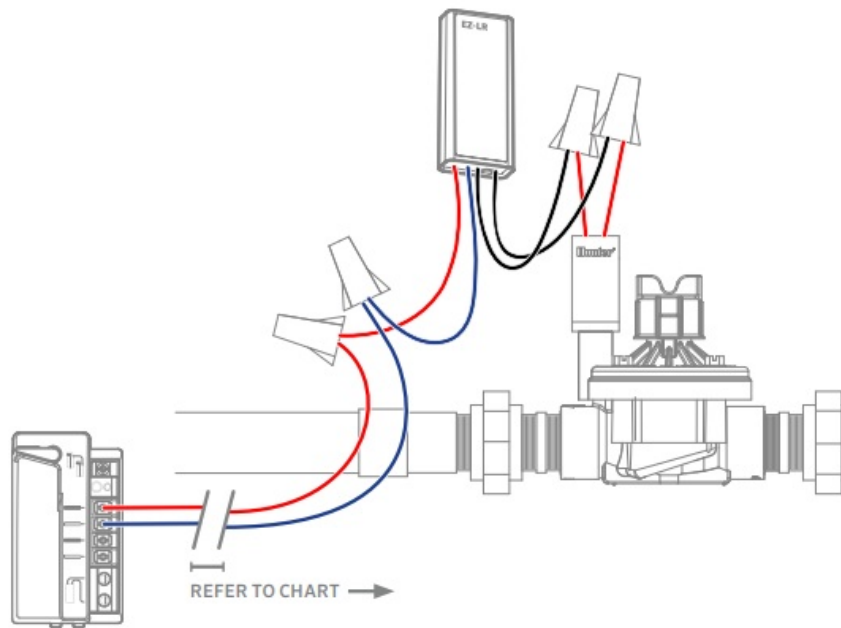
PROGRAM A MASTER VALVE DECODER

- The EZ-LR Decoder may be used with a Hunter Pump Start Relay (PSR) or Pump Start Relay Booster (PSRB).
- In either case, the decoder must be within 2000' of the controller.
- To program the Master Valve output for the decoder: With no stations running, connect the decoder to the port and press the Decoder Output Module.
- Connect the jumper wire from P/MV on the controller power module to the P/MV terminal on the decoder output module.
- Install the MV decoder on a two-wire path.



CONNECT THE CONTROLLER

- Install the decoder in the valve box near or together with the valve or relay.
- Connect the decoder red and blue wires to the two-wire path from the controller (does not matter which goes where).
- Connect decoder black wires to solenoid or relay (does not matter which goes where). Secure all splices with waterproof connectors.
- Refer to the chart in step 6.



OPERATING SPECIFICATIONS

- **Two-wire path input voltage:** ~24 VAC, 50/60 Hz EZ-LR output voltage: Proprietary high-frequency, low-voltage output for normal AC solenoids
- A standard voltmeter is not accurate for the EZ-LR output.
- The decoder activity light and a known-good solenoid are recommended to verify proper output.
- **Enclosure:** IP68 (submersible)

American Wire Gauge	Distance to Module (Feet) 1 active solenoid	2 active solenoids
18 AWG	1,894	947
16 AWG	3,012	1,505
14 AWG	4,790	2,394
12 AWG	7,616	3,807
10 AWG	12,107	6,051

24V, 60 Hz, 100° F, 10% Safety Factor

International Wire (mm²)	Distance to Module (Meters) 1 active solenoid	2 active solenoids
1.0 mm ²	578	289
1.5 mm ²	916	458
2.0 mm ²	1,378	689
2.5 mm ²	1,460	730

4.0 mm2	2,320	1,160
6.0 mm2	3,686	1,842

24V, 50 Hz, 38° C, 10% Safety Factor

FCC

COMPLIANCE DATA

This equipment has been tested and found to comply with the limits for a Class B digital device under Part 15 of the FCC Rules. These limits are designed to provide reasonable protection against harmful interference in a residential installation. This equipment generates, uses, and can radiate radio frequency energy and, if not installed and used under the instructions, may cause harmful interference to radio communications.

However, there is no guarantee that interference will not occur in a particular installation. If this equipment does cause harmful interference to radio or television reception, which can be determined by turning the equipment off and on, you are encouraged to try to correct the interference by taking one or more of the following measures:

- Reorient or relocate the receiving antenna.
- Increase the separation between the equipment and receiver.
- Connect the equipment to an outlet on a circuit different from that on which the receiver is connected.
- Consult the dealer or an experienced radio/TV technician for help.

Changes or modifications not expressly approved by Hunter Industries could void the user's authority to operate this device. If necessary, consult a representative of Hunter Industries Inc. or an experienced radio/television technician for additional suggestions.

CUSTOMER SERVICE

- © 2025 Hunter Industries Inc. Hunter, the Hunter logo, and other marks are trademarks of Hunter Industries Inc., registered in the U.S. and certain other countries.

- hunter.info/EZDS




- hunter.help/EZDS



- hunterirrigation.com

Documents / Resources

	<p>Hunter EZ-LR EZ Decoder System [pdf] Installation Guide</p> <p>ICC2, RC-101-IG-EZLR, PRG, EZ-LR EZ Decoder System, EZ-LR EZ, De coder System, System</p>
--	---

References

- [User Manual](#)

Decoder System, EZ-LR EZ, EZ-LR EZ Decoder System, Hunter, ICC2, PRG, RC-101-IG-EZLR,
Hunter System

Leave a comment

Your email address will not be published. Required fields are marked *

Comment *

Name

Email

Website

☐ Save my name, email, and website in this browser for the next time I comment.

Post Comment

Search:

e.g. whirlpool wrf535swhz

Search

[Manuals+](#) | [Upload](#) | [Deep Search](#) | [Privacy Policy](#) | [@manuals.plus](#) | [YouTube](#)

This website is an independent publication and is neither affiliated with nor endorsed by any of the trademark owners. The "Bluetooth®" word mark and logos are registered trademarks owned by Bluetooth SIG, Inc. The "Wi-Fi®" word mark and logos are registered trademarks owned by the Wi-Fi Alliance. Any use of these marks on this website does not imply any affiliation with or endorsement.