



HUIDU HD-C08L  
LED Display  
Asynchronous  
Control System



# HUIDU HD-C08L LED Display Asynchronous Control System Owner's Manual

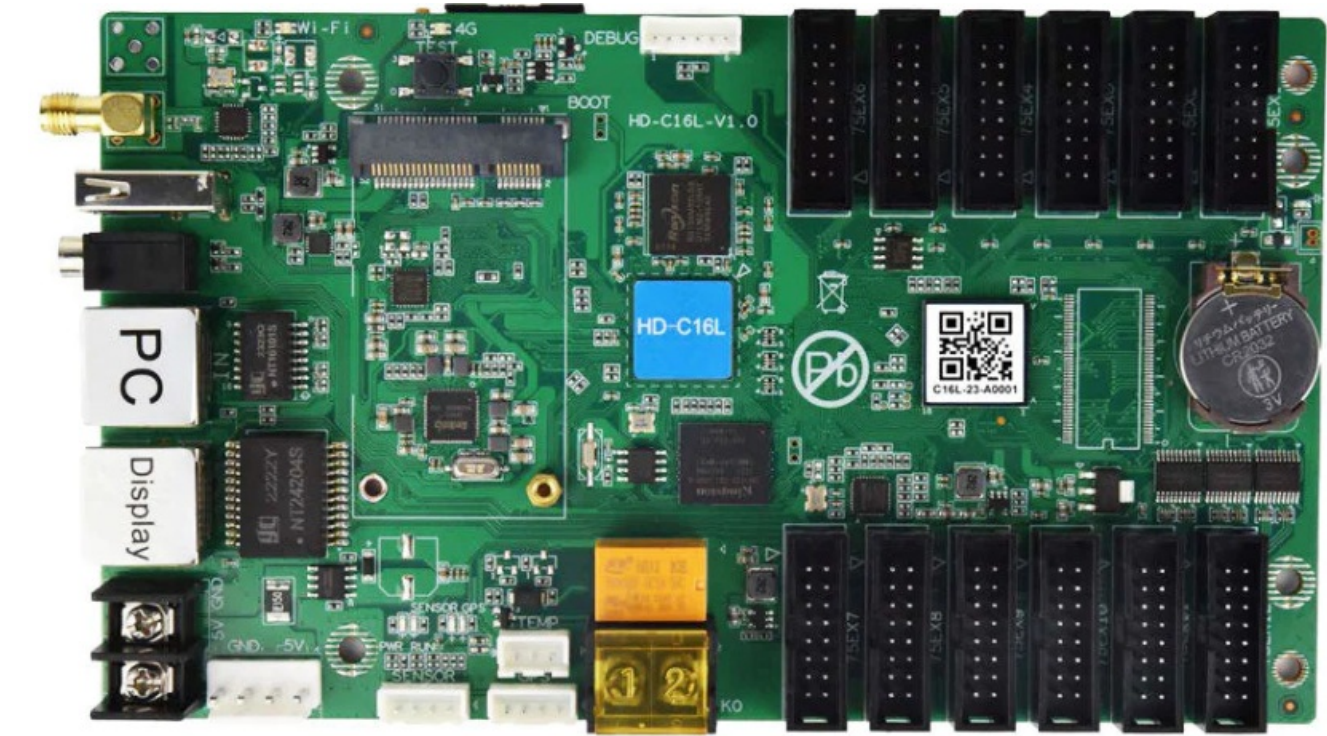
[Home](#) » [HUIDU](#) » HUIDU HD-C08L LED Display Asynchronous Control System Owner's Manual 

## Contents

- [1 HUIDU HD-C08L LED Display Asynchronous Control System](#)
- [2 Product Information](#)
- [3 Product Overview](#)
- [4 Product Features](#)
- [5 Interface Description](#)
- [6 Dimensions](#)
- [7 Product Specifications](#)
- [8 Way of Communication](#)
- [9 System supporting software](#)
- [10 Appearance](#)
- [11 Frequently Asked Questions \(FAQ\)](#)
- [12 Documents / Resources](#)
  - [12.1 References](#)
- [13 Related Posts](#)



**HUIDU HD-C08L LED Display Asynchronous Control System**



Product Information

Specifications

- Model: HD-C08L
- Release Version: V1.0
- Manufacturer: Shenzhen Huidu Technology Co., Ltd.
- Release Time: March 18th, 2024
- Frame Rate Output: 60Hz

Update history

Release version	Release time	Release Notes
V1.0	March 18th, 2024	First release

Product Overview

HD -C08L is a new generation LED multimedia playback card that integrates 8 HUB75E interfaces, eliminating the need for a computer as a video signal source; It supports the playback of videos, pictures, Gif animations, texts, WPS documents, tables, clocks, timings and other program contents; It supports 60Hz frame rate output, smooth word movement and remote control of power supply and other functions. C08L comes standard with Wi-Fi and supports mobile APP – “LedArt” wireless control; It supports access to the “Xiao XiaoHui Cloud” platform to easily realize remote cluster management on the Internet; It supports USB interface to update programs; It supports external various environmental monitoring sensors, achieving real-time viewing of environmental monitoring data; C08L is widely used in smart commercial displays and smart city fields, such as light pole screens, door screens, vehicle screens and other advertising and display fields.

Product Features

## Input

1. Support 1 channel 100M communication network port, used for debugging parameters, sending programs and accessing the Internet;
2. Support 1 channel USB communication interface, which can be used to update programs and expand capacity;
3. Support 1 channel dedicated interface for temperature sensor, 1 channel dedicated interface for GPS sensor and 1 channel universal sensor input interface.

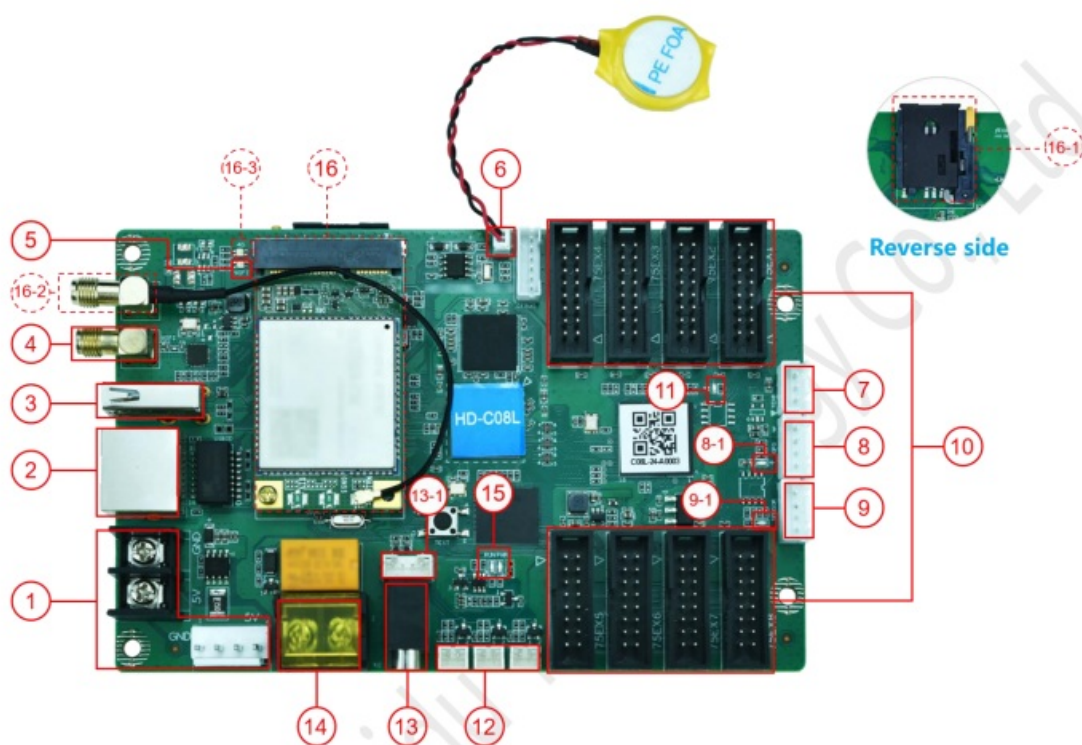
## Output

1. The maximum control range is 196,000 pixels, the maximum width is 2048 pixels , or the maximum height is 1024 pixels;
2. Onboard 8 sets HUB75E interfaces;
3. 1 channel TRS 3.5mm standard two-channel audio output.

## Functions

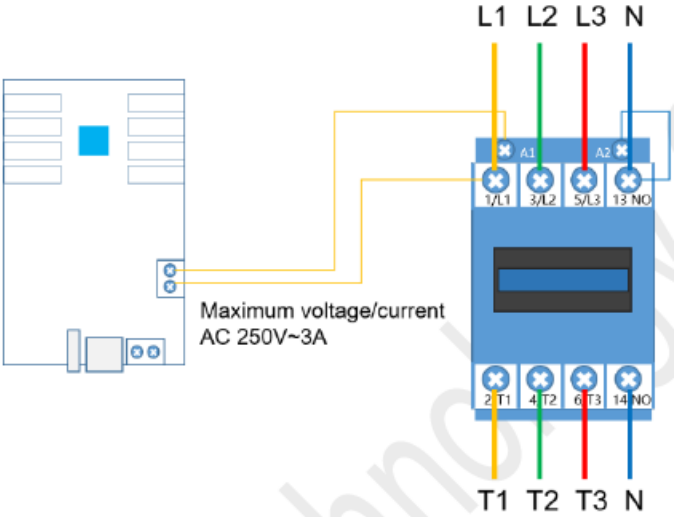
1. Comes standard with 2.4GHz Wi-Fi and supports mobile APP wireless control (supports Wi-Fi-AP, Wi-Fi-STA mode);
2. Onboard 1-channel relay can remotely control the power supply;
3. Supports 2-channel video window playback (supports up to 2 channels of 1080P);
4. Support 4G access to XiaoHui Cloud platform to realize remote management on the Internet (optional);
5. Support UART communication;
6. Supports 1 channel RS-232 or RS-485 communication (optional).
7. Support for Chinese and English voice broadcasting function (optional).

## Interface Description



Serial number	Name	Description
1	Power input terminal	DC 5V
2	Ethernet network port	100M input network port communication, connect to computer to debug and publish programs, used to access LAN or Internet
3	USB	Used to update programs or expand capacity
4	Wi-Fi antenna	Connect Wi-Fi antenna to enhance wireless signal
5	Wi-Fi indicator light	AP mode: <ul style="list-style-type: none"> <li>①The AP mode is normal and the green light flashes;</li> </ul>

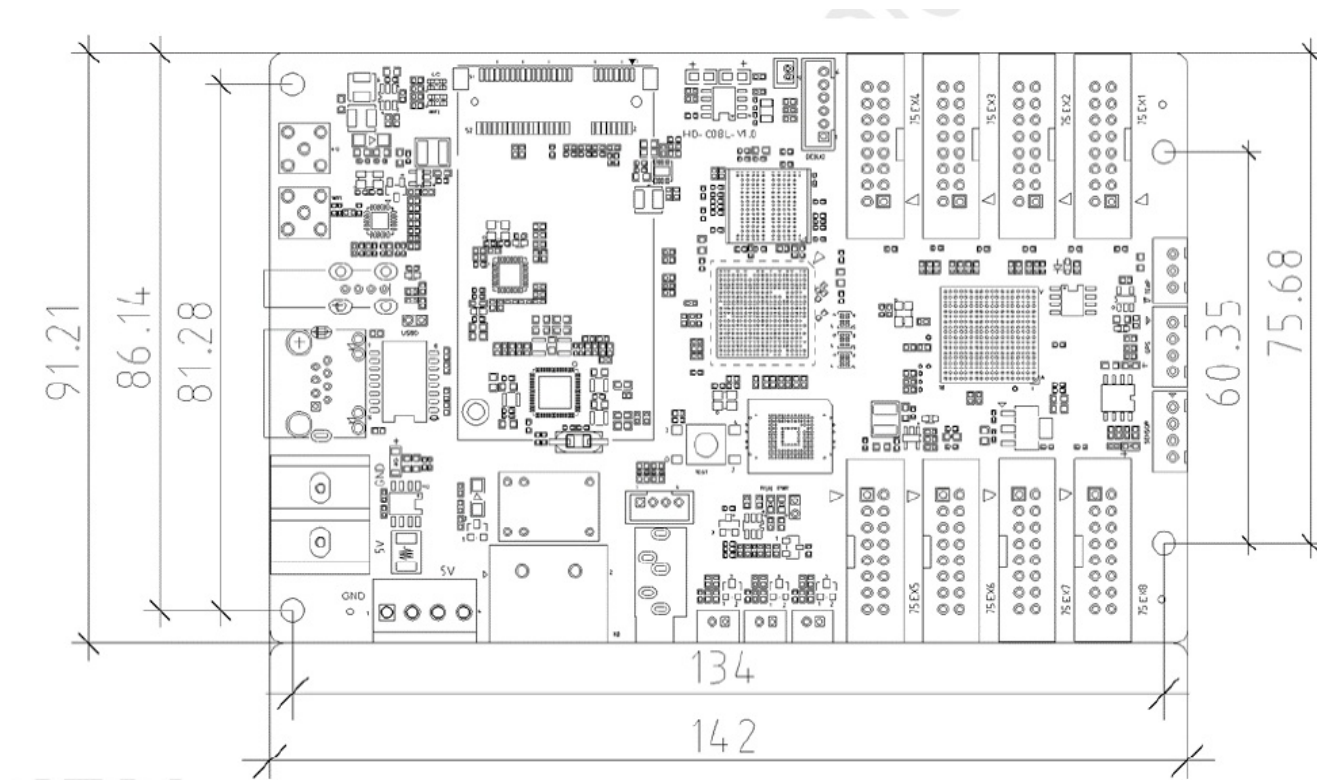
		<ul style="list-style-type: none"> <li>②The module cannot be detected and the light does not light up;</li> <li>③Cannot connect to the hotspot and the red light flashes;</li> </ul> <b>STA mode:</b> <ol style="list-style-type: none"> <li>STA mode is normal and the green light is always on;</li> <li>The bridge cannot connect to the Wi-Fi hotspot and the red light is always on;</li> <li>Unable to connect to the server, the yellow light is always on.</li> </ol>
6	Battery interface	Connect the 2PIN RTC battery
7	TEMP interface	Connect a temperature sensor to monitor the surrounding environment temperature in real time
8	GPS interface	<ol style="list-style-type: none"> <li>When detecting that there is no GPS signal, the light does not light up;</li> <li>When the GPS star search number &lt; 4, the green light flashes;</li> <li>When the GPS star search number &gt;= 4, the green light is always on.</li> </ol>
8-1	GPS indicator light	Connect to GPS module for positioning and time adjustment
9	Sensor interface	External temperature, humidity, brightness, wind speed, wind direction, noise, PM2.5, PM10, CO <sub>2</sub> and other sensors
9-1	Sensor indicator light	The sensor is connected normally, and the indicator light is flashing
10	HUB75E interface	Connect HUB75 (B/D/E) interface module
11	Display indicator light	If the green light flashes, the FPGA system is running normally; if the green light is on or off, the system is running abnormally.
12	3 sets of CTRL	Switching quantity detection, detecting 12V level input, controlling on/off

		screen
13	TRS Audio output	TRS 3.5mm standard two-channel audio output port
14	Relay	<p>Relay on/off, supports maximum load: AC 250V~3A or DC 30V-3A The connection method is as follows:</p> 
15	System indicator light	<p>PWR: Power indicator light, green light is always on, power input is normal</p> <p>RUN: System running light. If the green light flashes, the system is running normally; if the green light is always on or off, the system is running abnormally.</p>
16	PCIE-4G socket	4G module socket (optional function, installed with 4G antenna by default)
16-1	Standard SIM card slot	Used to install 4G data card and provide networking function (optional,supports optional eSIM card)
16-2	4G antenna installation port	External 4G antenna to enhance 4G signal
16-3	4G communication indicator light	<ul style="list-style-type: none"> <li>①The green light is always on, and the connection to the cloud server is successful;</li> </ul>

		<ul style="list-style-type: none"> <li>②The yellow light is always on and cannot connect to the cloud service;</li> <li>③The red light is always on, there is no signal or the SIM is in arrears or cannot dial;</li> <li>④The red light flashes and the SIM cannot be detected;</li> <li>⑤The light does not light up and the module cannot be detected.</li> </ul>
--	--	--

## Dimensions

Size mm



## Product Specifications

### Media Type:

<b>Program schedule</b>	Supports sequential playback of multiple programs, timed playback, program insertion, and multi-screen synchronization
<b>Program partition</b>	Support any partition of program window
<b>Video format</b>	AVI, WMV, MPG, RM/RMVB, VOB, MP4, FLV and other common video formats Supports up to 2 channels of 1080 video playback at the same time
<b>ImageFormat</b>	BMP, GIF, JPG, JPEG, PNG, PBM, PGM, PPM and other common image formats
<b>Audio format</b>	MPEG-1 Layer III, AAC, etc.
<b>Text display</b>	Single line text, static text, multi-line text, animated words, WPS, etc.
<b>Clockdisplay</b>	RTC real-time clock display and management
<b>U disk</b>	Plug and play

### The parameter:



<b>Electrical parameters</b>	Input power	DC 5V 4.6V~5.5V
	Maximum power consumption	8W
<b>Hardware parameters</b>	Hardware performance	1.5GHz, Quad-core CPU, Mali-G31GPU Support 1080p@60fps hard decoding playback Support 1080p@30fps hardware encoding
<b>Storage</b>	Internal storage	4GB (2G available)
<b>Storage environment</b>	Temperature	-40°C 80°C
	Humidity	0%RH 80%RH (no condensation)
<b>Working environment</b>	Temperature	-40°C 80°C
	Humidity	0%RH 80%RH no condensation)

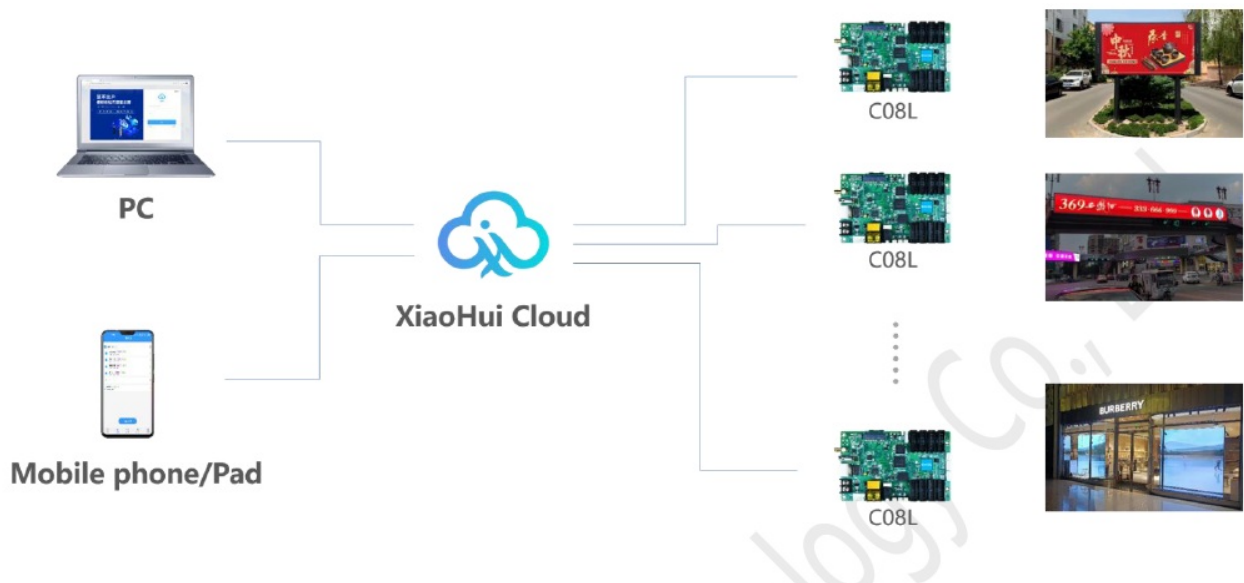
<b>Packaging Information</b>	Checklist: 1×C08L1×Wi-Fi antenna 1×certificate Note: 4G antenna comes with 4G module optional 1PCS
<b>Size</b>	142mm×91.2mm
<b>Net weight</b>	0.114KG
<b>Protection level</b>	The bare board is not waterproof, prevent water from dripping into the product, and do not get the product wet or rinsed
<b>System software</b>	Linux4.4 operating system software FPGA software

## Way of Communication

1. Stand-alone control, supports Wi-Fi, network port direct connection, and USB interface for communication.



2. Cluster control, supports Internet remote control.



## System supporting software

Software	Type	Description
HDPlayer	PC	LED display screen local management system, used for debugging, program editing, program publishing, etc.
XiaoHui Cloud	Web	Cloud based display screen information publishing system, which enables remote cluster management and information publishing of LED displays by logging in through a browser.
LedArt	Mobile Phone	Supports Android, iOS, and Harmony platforms, enabling control of LED displays and wireless program publishing.

## Appearance





Standard version



Optional 4G version

#### **Illustrate:**

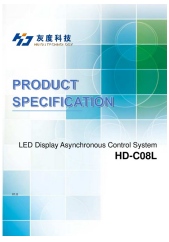
Welcome to choose Huidu Technology products. There may be differences between the product pictures in the specification and the actual appearance (such as interface caps, antenna installation, etc.). Please refer to the actual product. If you have any questions, please contact technical support or salesperson for confirmation.

#### **Frequently Asked Questions (FAQ)**

- **Q: How do I update programs on the device?**

**A:** To update programs, use the USB communication interface provided. Connect a USB drive containing the updated programs and follow the on-screen instructions.

## Documents / Resources

	<a href="#">HUIDU HD-C08L LED Display Asynchronous Control System</a> [pdf] Owner's Manual HD-C08L, HD-C08L LED Display Asynchronous Control System, LED Display Asynchronous Control System, Display Asynchronous Control System, Asynchronous Control System
---	---

## References

- [Shenzhen Huidu Technology Co., Ltd.](#)
- [User Manual](#)

[Manuals+](#), [Privacy Policy](#)

This website is an independent publication and is neither affiliated with nor endorsed by any of the trademark owners. The "Bluetooth®" word mark and logos are registered trademarks owned by Bluetooth SIG, Inc. The "Wi-Fi®" word mark and logos are registered trademarks owned by the Wi-Fi Alliance. Any use of these marks on this website does not imply any affiliation with or endorsement.